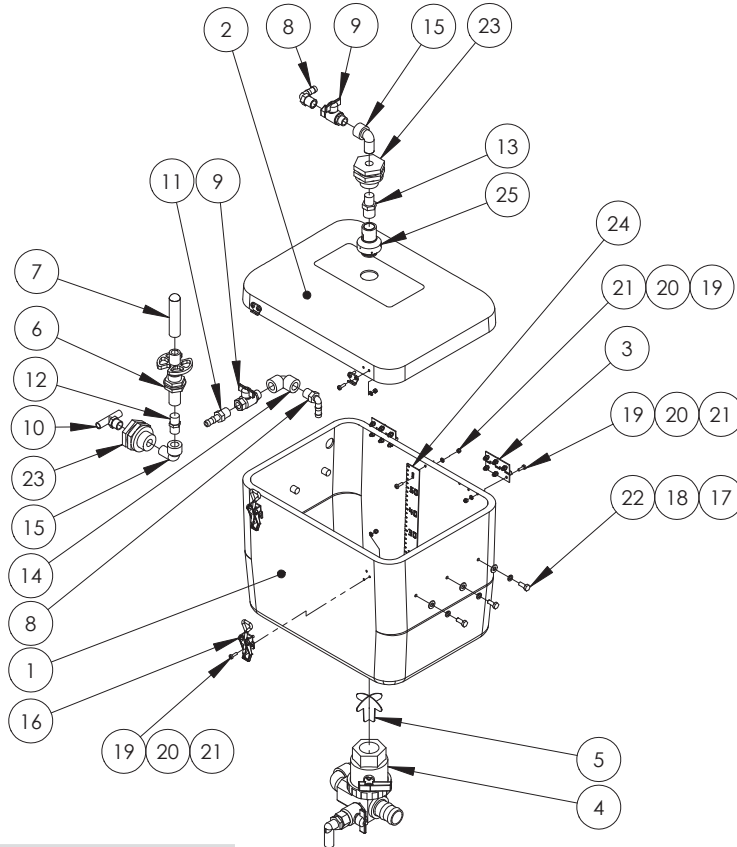


# Chapter 8

## INDUCTION HOPPER

### Hopper Tank



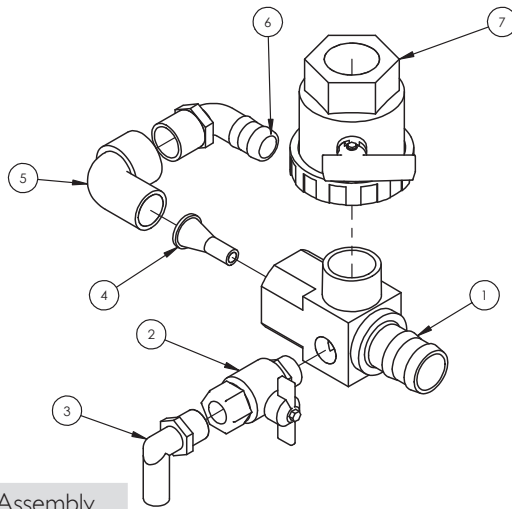
GA4900381-60 Complete Assembly

ITEM NO.	PART NUMBER	DESCRIPTION	QTY.
1	GA5070040	Hopper tank - 07 Advance 60L	1
2	GA5070045	Hopper lid - 07 Advance 60L	1
3	GA5006661	Hinge 76mm Butt Hinge SS	2
4	GA4903105	Pre-assembled Induction hopper bottom suit 40 / 60L /70L	1
5	GA4657115	Induction hopper anti vortex cross	1
6	510100	Push down valve	1
7	510110	Rinsing nozzle 1/2" F thread	1
8	HB050-90	Hose Barb Elbow 1/2	2
9	GA5020615	1/2" ball valve	2
10	T12T	Barb male tee (1 x 1/2" thread, 2 x 1/2" barbs)	1
11	HB050	1/2" Hose Barb	1
12	NIP-050-SH	1/2" Short Poly Nipple	1

## Hopper Tank

ITEM NO.	PART NUMBER	DESCRIPTION	QTY.
13	RN-050-075	Reducing Nipple 1/2" x 3/4"	1
14	EL050-90	1/2" Female to Female Elbow	1
15	SL050-90	1/2" Street Elbow	2
16	GA5007071	Latch Chemical Induction Hopper Lid	2
17	GA5004883	Washer 8mm HD	6
18	GA5004919	M8 Spring washer SS	6
19	GA5003976	M5 x 20mm Pan head Screw	23
20	GA5003983	M5 washer ss	23
21	GA5003975	M5 Nyloc nut SS	23
22	GA5004085	M8x20 bolt	6
23	TF050	1/2" Poly Bulkhead	2
24	GA4522296	Hopper level indicator 65L	1
25	B55270-34-18	Tank rinse nozzle 3/4 BSP	1

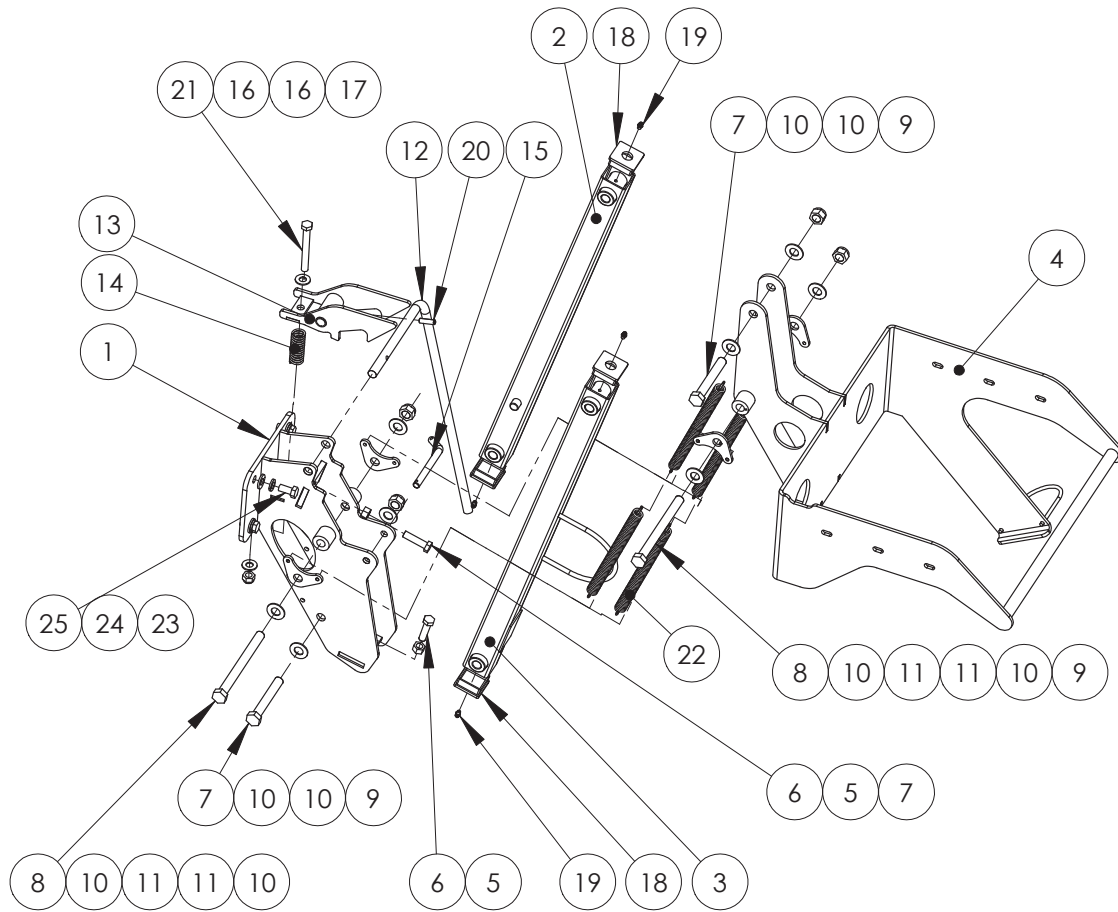
## Hopper Tank - Bottom



GA4903105 Complete Assembly

ITEM NO.	PART NUMBER	DESCRIPTION	QTY.
1	L056A	Hopper Bottom	1
2	GA5018315	Ball Valve Male / Female TEE 3/4"	1
3	HB075-90	Elbow male 3/4"	1
4	L057A	Hopper jet tapered 7mm	1
5	SL100-90	Street Elbow 1" Poly	1
6	HB100-90	Hose barb 90 degree 1" Banjo	1
7	UV150FP	Ball Valve Banjo 1 1/2"	1

# Hopper Frame



ITEM NO.	PART NUMBER	DESCRIPTION	QTY.
1	GA4653420	INDUC HOP chassis MNT ADV	1
2	GA4653440	INDUC HOP arm UPR ADV	1
3	GA4653445	INDUC HOP arm LWR ADV	1
4	GA4656855	INDUC HOP tank support 08 Adv	1
5	GA5000559	M12 Plain nut	2
6	GA5000327	Set Screw M12 x 45 ZP GR8.8	2
7	GA5000259	M12x100 Bolt	1
8	GA5011199	Bolt M16 x 110 ZP GR8.8	2
9	GA5000879	Bolt M16 x 180 ZP GR8.8	2
10	GA5001029	M16 Nyloc nut	4
11	GA5001009	Flat washer M16 HD	8
12	GA4522294	Prairie EF induction hopper x2 Spring mount	4
13	GA5010811	RND 16mm cut 693 (RTD)	1
14	GA4653490	INDUC HOP latch ADV	1
15	SP-IH-009	Hopper Latch Pin	1
16	GA5007073	Chemical Induction Hopper Spring	4
17	GA5003783	50x50mm 0.8-2.5 Insert Cap	4

ITEM NO.	PART NUMBER	DESCRIPTION	QTY.
18	GA5000587	Washer HD ZP 12mm	2
19	GA5012461	M12 Nyloc nut Z/P	1
20	GA5012203	Grease Nipple 1/4" UNF Short	4
21	GA5075130	Roll pin M8 x 30mm coated	1
22	GA5007329	Compression spring gold	1
23	GA5000587	M12 WASHER	4
24	GA5000575	M12 Spring washer SS	4
25	GA5000295	Set screw HT M12 x 25	4