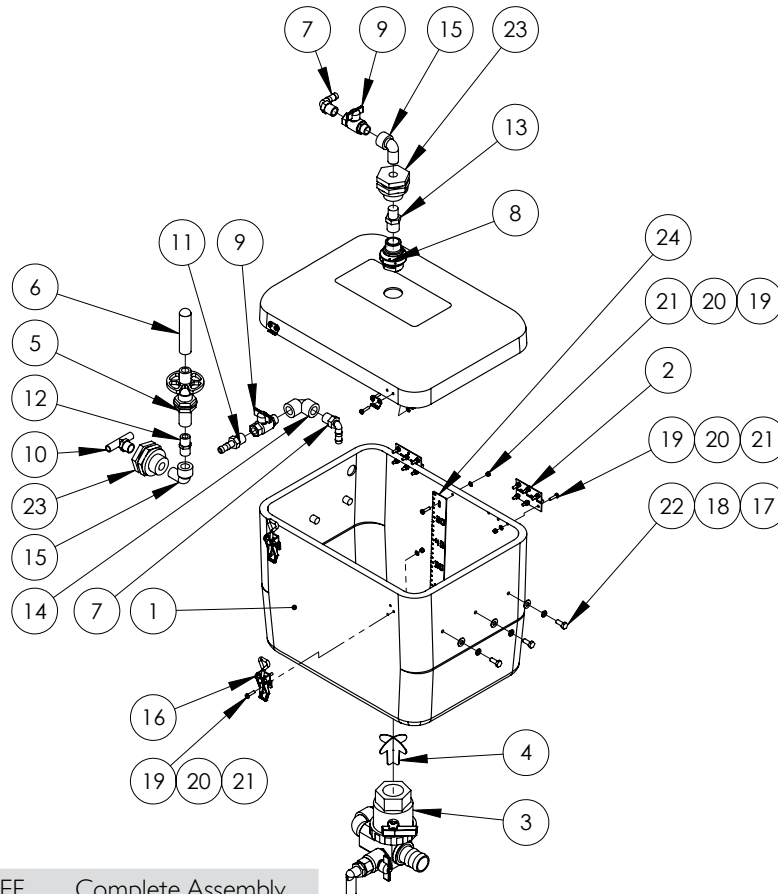


# Chapter 8

## INDUCTION HOPPER

### Hopper Tank



GA4900381-60-EF Complete Assembly

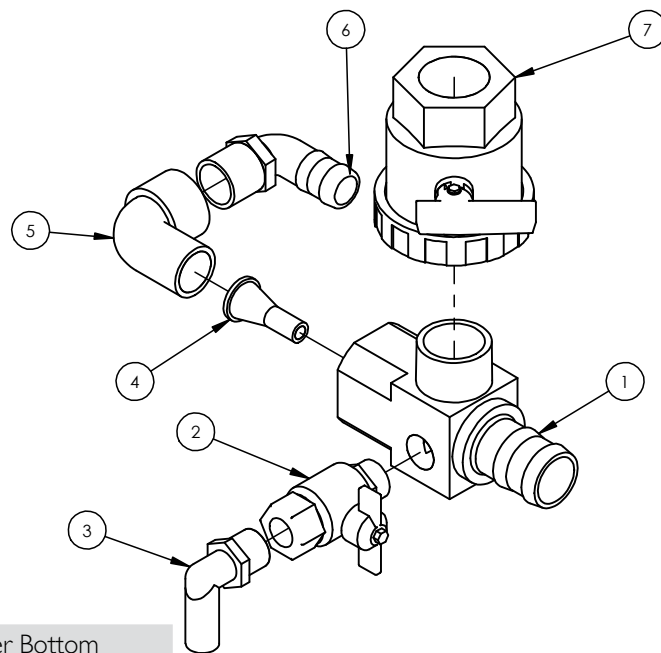
ITEM NO.	PART NUMBER	DESCRIPTION	QTY.
1	GA5070040	Tank, Induction Hopper, 60L with 1 1/2" BSPT thread, Tank & lid	1
2	GA5006661	Hinge, Butt, 70 long x 50 wide x 1.5mm, SS	2
3	GA4903105	Valve assembly, Induction hopper bottom, Suit 40, 60, 70L hopper	1
4	GA4657115	Anti vortex cross, Suit induction hopper bottom	1
5	510100	Valve, Drum & container rinsing nozzle, ARAG	1
6	510110	Nozzle, Drum & container rinsing, ARAG	1
7	HB050-90	Hose barb, Elbow, 90 degree, 1/2" male thread x 1/2" hose	2
8	L033A	Tank rinsing nozzle, 3 peice assembly, White	1
9	GA5020615	Valve, Ball, 12mm male, female thread inlet, outlet, Butterfly handle, SS	2
10	T12T	Tee, Threaded, 1/2" male x 1/2" hose	1
11	HB050	Hose barb, Straight, 1/2" male thread x 1/2" hose, Banjo	1

Continued over page

## Hopper Tank

ITEM NO.	PART NUMBER	DESCRIPTION	QTY.
12	NIP050-SH	Nipple, Short, 1/2" male thread x 1/2" male thread, Banjo	1
13	RN075050	Reducing nipple, 3/4" male thread x 1/2" male thread, Banjo	1
14	EL050-90	1/2" Poly Pipe Elbow 90 Degree	1
15	SL050-90	Street elbow, 90 degree, 1/2" female thread x 1/2" male thread	2
16	GA5007071	Latch, Adjustable, Induction Hopper Lid	2
17	GA5004883	Washer 8mm Flat ZP Heavy Duty	6
18	GA5004919	Washer 8mm Spring SS	6
19	GA5003976	Bolt M5 x 20 Pan Head SS	23
20	GA5003983	Washer 5mm Flat SS	23
21	GA5003975	Nut M5 Nyloc SS	23
22	GA5004085	Bolt M8 x 20 ZP GR8.8	6
23	TF050	1/2" Poly Tank Flange	2
24	GA4522296	Level indicator, 60L induction hopper	1
25	GA5016473	Tape PM foam 6.4 x 18mm L/Density (cut 2000mm)	1

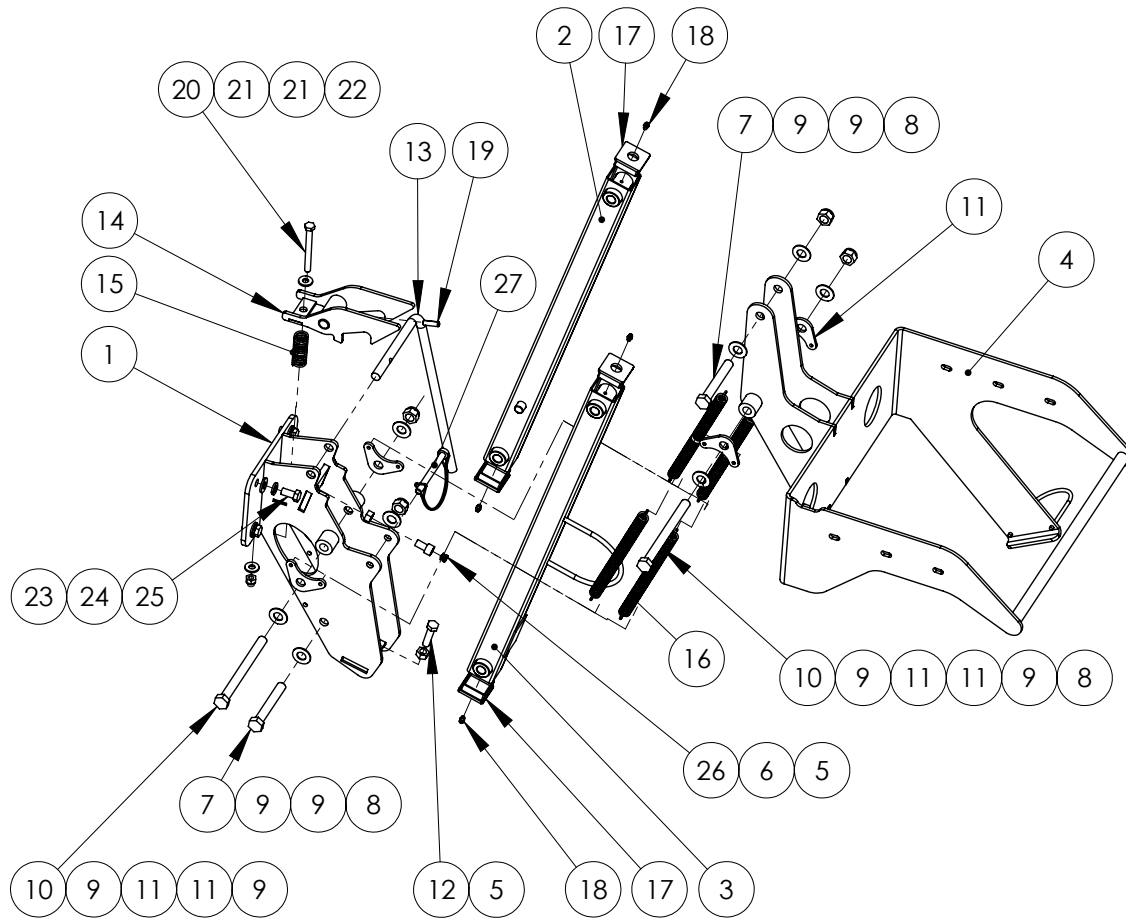
## Hopper Tank - Bottom



GA4903105 Hopper Bottom

ITEM NO.	PART NUMBER	DESCRIPTION	QTY.
1	L056A	Induction hopper bottom, 1 1/2" hose barb x 1 1/2" BSPT male x 1" BSPT female x 3/4" BSPT female.	1
2	GA5018315	Valve, Ball, 20mm male & female thread, Black Butterfly handle	1
3	HB075-90	Hose barb, Elbow, 90 degree, 3/4" male thread x 3/4" hose	1
4	L057A	Venturi, 9mm outlet, Suit induction hopper	1
5	SL100-90	Street elbow, 90 degree, 1" male x 1" female, Banjo	1
6	HB100-90	Hose barb, Elbow, 90 degree, 1" male x 1" hose, Banjo	1
7	UV150FP	Valve, Ball, 1 1/2" female thread inlet / outlet, Full port, Lever handle	1

# Hopper Frame



GA4903049-65-EF Hopper Frame 60L

ITEM NO.	PART NUMBER	DESCRIPTION	QTY.
1	GA4653420	Induction Hopper chassis Mount ADV	1
2	GA4653440	Induction Hopper arm Upper ADV	1
3	GA4653445	Induction Hopper arm Lower ADV	1
4	GA4656855	Induction Hopper tank support 60L suit EF range	1
5	GA5000559	Nut M12 Hex ZP	2
6	GA5050321	SHCS M12 x 40 ZP GR12.9	1
7	GA5000855	Bolt M16 x 110 ZP GR8.8	2
8	GA5001029	Nut M16 Nyloc ZP	4
9	GA5001009	Washer 16mm Flat ZP Heavy Duty	8
10	GA5000879	Bolt M16 x 180 ZP GR8.8	2
11	GA4522294	Mounting plate, Double induction hopper spring	4
12	GA5000319	Set Screw M12 x 40 ZP GR8.8	1
13	GA4699435	Handle, Induction Hopper Latch arm	1
14	GA4653490	Induction Hopper latch ADV	1
15	GA5007329	Spring compression, 76.2mm x 25.4 x 3.15mm, gold	1
16	GA5007073	Spring, Tension, 38.2 OD x 284.3 long x 3.55mm	4

Continued over page

ITEM NO.	PART NUMBER	DESCRIPTION	QTY.
17	GA5003783	End cap, Insert, Black, Plastic, 50 x 50 mm	4
18	GA5012203	Grease nipple, Short, 1/4" UNF	4
19	GA5075130	Roll pin 8mm x 30mm coated	1
20	GA5011139	Bolt M10 x 100 ZP GR4.6	1
21	GA5000117	Washer 10mm Flat SS Heavy Duty	2
22	GA5000141	Nut M10 Nyloc ZP	1
23	GA5000587	Washer 12mm Flat ZP Heavy Duty	4
24	GA5000575	Washer 12mm Spring SS	4
25	GA5000295	Set Screw M12 x 25 ZP GR8.8	4
26	GA5052905	Insert, suit 12mm Hole, Black, plastic	1
27	GA5048380	Pin, 11mm OD shaft, Spring Steel wire loop lock, Yellow zinc	1