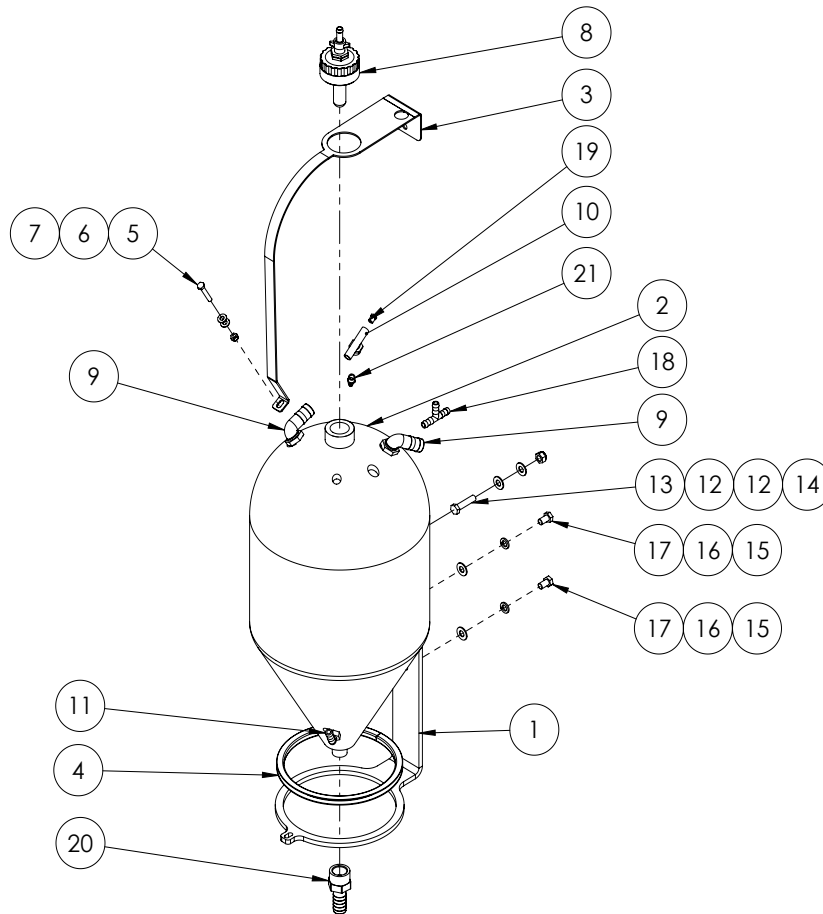


Chapter 10

TRANSCAL

Transcal Assembly



ITEM NO.	PART NUMBER	DESCRIPTION	QTY.
1	F70608A	45l Transcal mount plate 10mm FMS	1
2	GA4901047	Tank, 45L, Natural, Suit Transcal	1
3	F70623A	Transcal bottle strap Yellow Zinc Plated	1
4	GA5010085	Hollow section rectangular rubber (cut 735mm)	1
5	GA5011489	Bolt M8 x 60 ZP GR8.8	1
6	GA5003643	Washer 8mm Flat SS HD	2
7	GA5004917	Nut M8 Nyloc ZP	1
8	*	Rinse Nozzle Cap	1
9	GA5077723	Hose barb, Elbow, 90 degree, 1" male x 1" hose	2
10	GA3500391	Tee, Threaded, 1/2" male x 1/2" hose	1
11	GA5077708	Hose barb, Elbow, 90 degree, 1/2" male thread x 1/2" hose	1

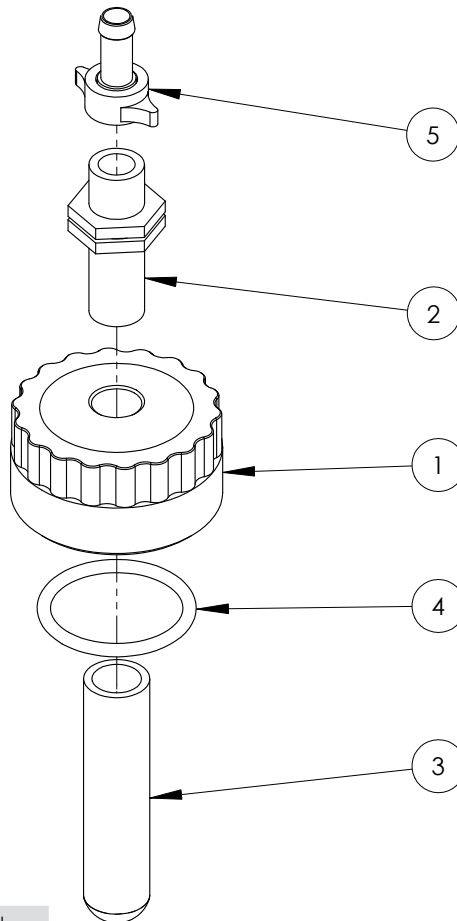
* Sub-assembly on following pages

Continued over page

Transcal Assembly

ITEM NO.	PART NUMBER	DESCRIPTION	QTY.
12	GA5000577	Washer 12mm Flat SS HD	2
13	GA5011237	Set Screw M12 x 50 ZP GR8.8	1
14	GA5012461	Nut M12 Nyloc ZP	1
15	GA5000117	Washer 10mm Flat SS HD	2
16	GA5000137	Washer 10mm Spring SS	2
17	GA5011229	Bolt M12 x 25 ZP GR8.8	2
18	GA5077751	Tee, Hose barb, 1/2", Banjo	1
19	GA5020695	Hosetail (brass) 1/4" x 1/8" Male Thread	1
20	GA5077747	Hose barb, Straight, 1" female thread x 1" hose	1
21	GA5020540	Hose barb, Straight, 1/4 male thread x 1/4 hose, Brass	1

Rinse Nozzle Cap Assembly



GA4903050 Complete Assembly

ITEM NO.	PART NUMBER	DESCRIPTION	QTY.
1	L055A	Cap / Lid, 80 OD, 1/2" BSPF female thread in top, Suit Transcal	1
2	GA5078408	Long thread nipple 1/2"	1
3	GA5077063	Nozzle, Drum & container rinsing	1
4	GA5009187	O-ring, 60 x 5.5mm, suits Exacta tank cap	1
5	GA5075655	Hose barb, Brass, 13mm hose x fly nut end	1