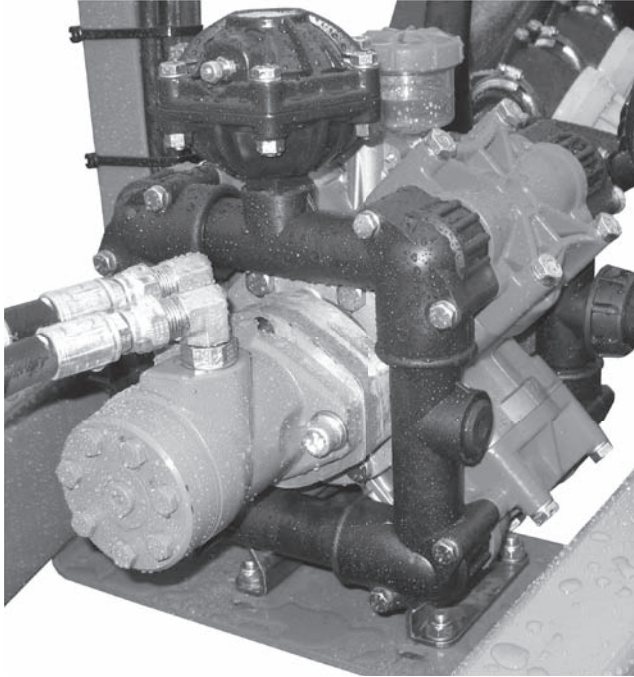


# CHAPTER 2

---

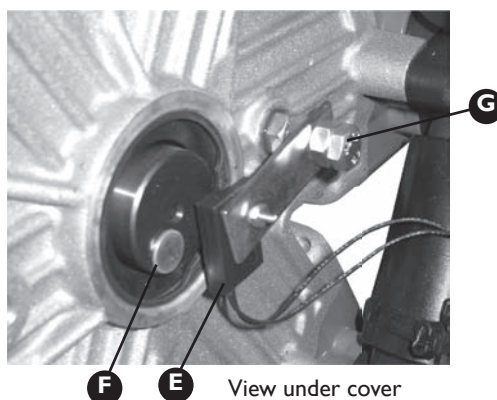
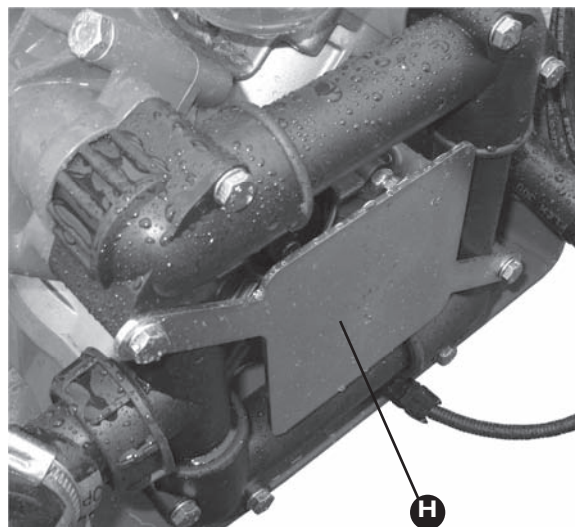
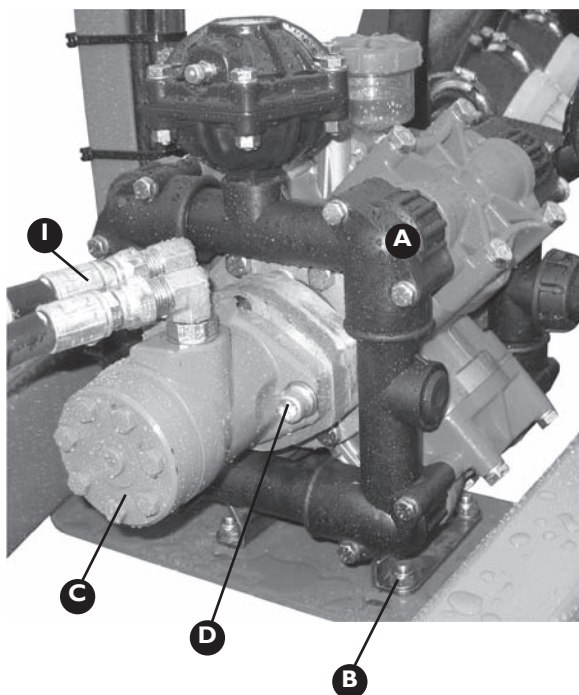
## PUMPS



Hydraulic Drive Pumps.....	2-2
Hydraulic Hose Kit.....	2-3
PTO Drive Pumps.....	2-4
160l/min Pump Breakdown.....	2-5

Rev 00 15/4/10

# HYDRAULIC DRIVE PUMPS



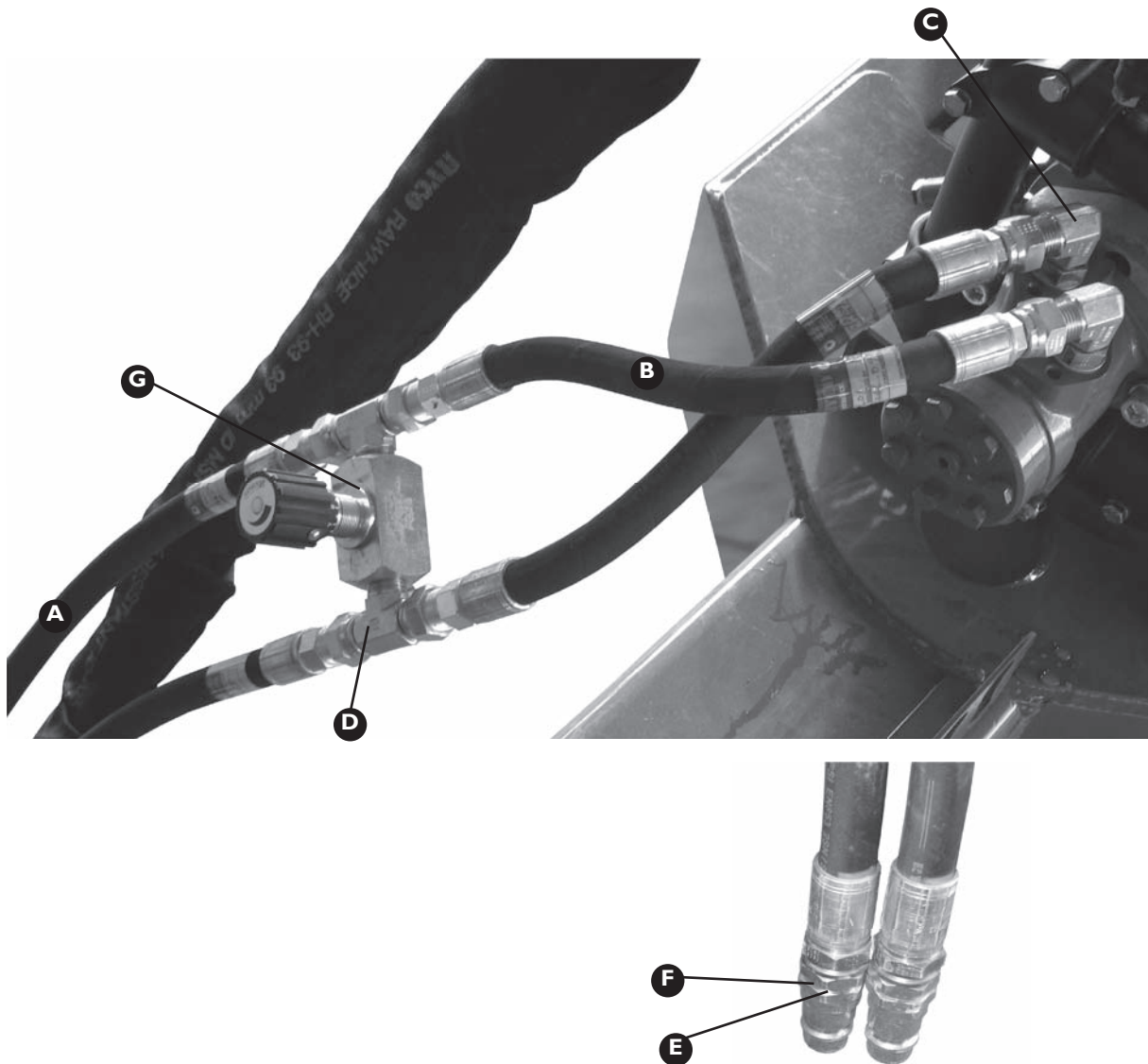
View under cover

**Assembly Part No GA4900663-PA-EF**

Item	Part No	Description	Quantity
A	RO160MI	160l/min Pump (Hydraulic Drive) I	1
B-1	GA5065455	M10 x 30mm Bolt	4
B-2	GA5000141	M10 Nyloc	4
B-3	GA5000139	10mm Washer	4
B-4	GA5002627	3/8" Washer	4
C	GA5047515	Hydraulic Motor 80cc	1
D-1	GA5000319	M12 x 40mm Bolt	2
D-2	GA5000575	12mm Spring Washer	2

Item	Part No	Description	Quantity
D-3	GA5000577	12mm Washer	2
E	1170171293	RPM Sensor (SCS440/450)	1
F	GA5016169	Super Magnet	1
G-1	GA5048655	M8 x 40mm Bolt	1
G-2	GA5011499	M8 Plain Nut	2
H	PUMPCOVER	Pump Cover for 160L pump	1
I	GA5067185-EF	Hydraulic Hose Kit	1

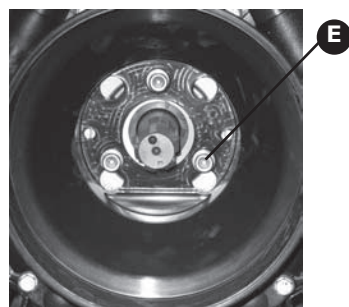
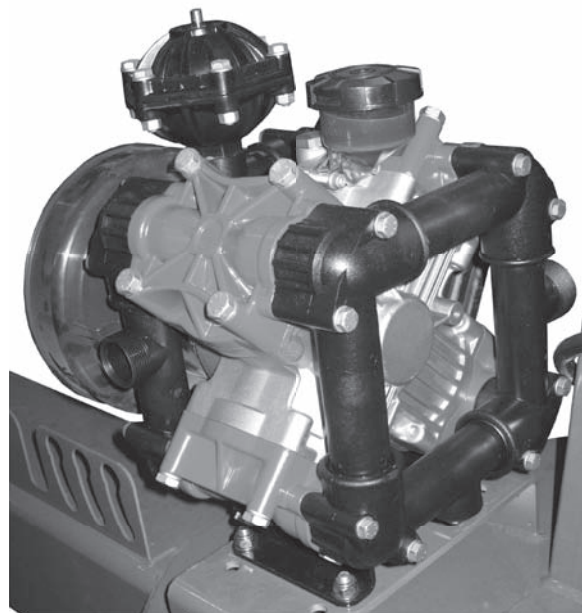
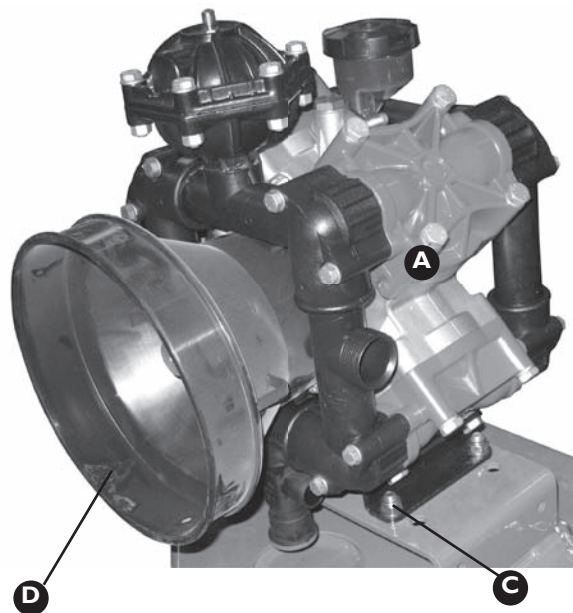
# HYDRAULIC HOSE KIT



## Kit Part No GA5067185-EF

Item	Part No	Description	Quantity
A	HL-08-EF	2100mm long Hydraulic Hoses	2
B	HL-09	300mm Long Hydraulic Hoses	2
C	S77-0808	90 Degree Hydraulic Elbow	2
D	S83-080808	Hydraulic Tee	2
E	R81-08M	Hydraulic Male Fitting	2
F	RL21-08	O-ring	2
G	GA5018221	1/2" Needle Valve	1

# PTO DRIVE PUMPS



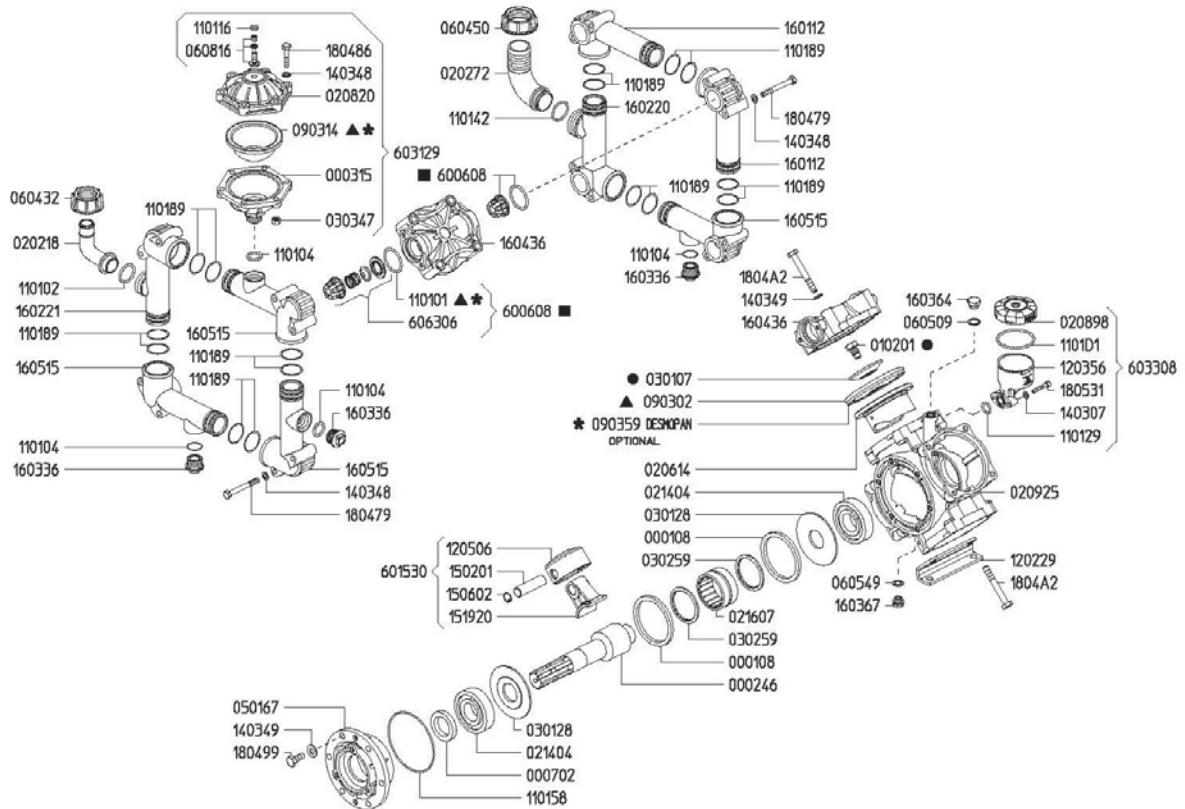
Item	Part No	Description	Quantity
A	R01601C	Pump 160L (Shaft Drive)	1
B	GA5060830	PTO Shaft*	1
C-1	GA5065455	M10 x 30mm Bolt	4
C-2	GA5000141	M10 Nyloc Nut	4
C-3	GA5000139	10mm Washer	4

Item	Part No	Description	Quantity
C-4	GA5002627	3/8" x 27mm x 3mm Washer	4
D	7650-7202121902	PTO Cover	1
E-1	GA5006127	M10 x 25 Cap Screw	3
E-2	GA5000139	10mm Flat Washer	3
E-3	GA5000137	10mm Spring Washer	3

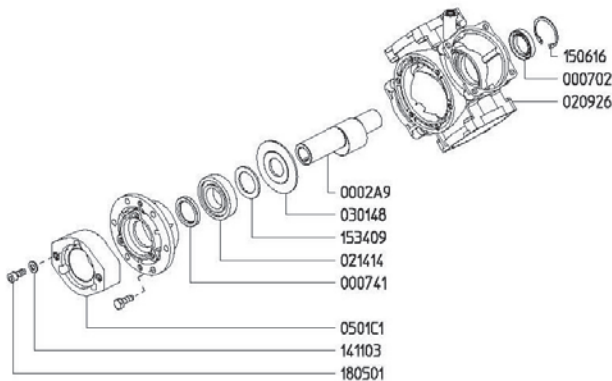
\*Wide Angle PTO shaft available as an option Part No GA5013511

# I 60l/min PUMP BREAKDOWN

## RO 160 1C



## RO 160 MI-1"



## 160l/min PUMP BREAKDOWN

Part No	Description	Part No	Description
000108	Retainer Ring "RO 160"	110129	O-Ring D.16,20x3 (RIF . 222162)
000246	Shaft "RO 160" (9) IC	110142	O-Ring D.32,00x3 (RIF . 3832)
0002A9	Shaft "RO 160/250" (9) MI D.1"	110158	O-Ring D.110x2,5 (RIF . 115110)
000315	Pressure Accumulator	110189	O-Ring D.36,10x3,53 (RIF . 4143)
000702	Oil Seal D.35x55x10	1101D1	O-Ring D.58,42x2,62 (RIF . 3231)
000741	Oil Seal D.40x55x7	120229	Base Plate "RO 160/180"
010201	Diaphragm Bolt "RO/Kappa"	120356	Oil Reservoir
020218	Hose Barb D.25	120506	Aluminium Plunger D.75 "RO/Kappa 120"
020272	Hose Barb D.40	140307	Washer D.6,4x12x1,6
020614	Sleeve D.75 "RO 110/160/250"	140348	Washer D.8,4x16x1,6
020820	Accumulator Cover "RO"	140349	Washer D.10,5x18x1,6
020898	Oil Reservoir Cover	141103	Schnorr Washer D.10
020925	Crankcase "RO 160"	150201	Pin D.18x64
020926	Crankcase "RO 160/180" TS	150602	Snap Ring D.18
021404	Ball Bearing 6307 D.35x80x21	150616	Snap Ring D.55
021414	Ball Bearing D.40x80x18 6208	151920	Connecting Rod "Omega 135/RO 160"
021607	Roller Bearing NK55-35 D.55x68x35	153409	Disc "RO 160/250" MI
030107	Diaphragm Disc "RO/Kappa 120/150"	160112	Inlet-Outlet Hose "RO 160/180"
030128	Rod Disc "RO 160/180/210/250"	160220	Suction Hose G1" 1/2 M "RO 160/180"
030148	Rod Disc "RO 160/250" OMR80	160221	Outlet Hose G1" 1/4 M "RO 160/180"
030259	Rod Spacer "RO 160/250"	160336	Plug G3/4
030347	Hexagonal Nut M8x8 UNI5587	160364	Brass Plug G3/8
050167	Bushing Flange "Omega 135/RO 160/250"	160367	AVP Plug G1/4
0501C1	Flange "RO 160/250" MI	160436	Head "RO 110...250" RED
060432	Plastic Nut G1" 1/4	160515	Inlet-Outlet Hose G3/4 F "RO 160/180"
060450	Plastic Nut G1" 1/2	180479	Hex Screw M8x70 UNI5737 DACROMET
060509	Gasket D.17x22x1,5	180486	Hex Screw M8x40 UNI5737 DACROMET
060549	Gasket D.13x19x1,5	180499	Hex Screw M10x25 UNI5739 DACROMET
060816	Air Valve Assembly	1804A2	Hex Screw M10x75 UNI5737 DACROMET
090302	Piston Diaphragm "RO70...250" D.116	180501	Allen Screw M10x25 UNI5931
090314	Accumulator Diaphragm "Kappa/RO"	180531	Allen Screw M6x30 UNI5931 DACROMET
090359	Piston Diaphragm "Kappa 120/150" D.115,4	600608	Valve Assy "RO/Omega/Beta"
110101	O-Ring D.39,69x3,53 (RIF . 144)	601530	Rod Assy "RO 160/180" D.75
110102	O-Ring D.29,75x3,53 (RIF . 4118)	603129	Press.Accumulator Assy "RO"
110104	O-Ring D.20,63x2,62 (RIF . 128)	603308	Oil Reservoir Assy "RO"
110116	O-Ring D.6,00x3 (RIF . 1263)	606306	Valve Assy "RO 70...250" W/T O-Ring

Please note that on pump parts minimum order quantities may apply.