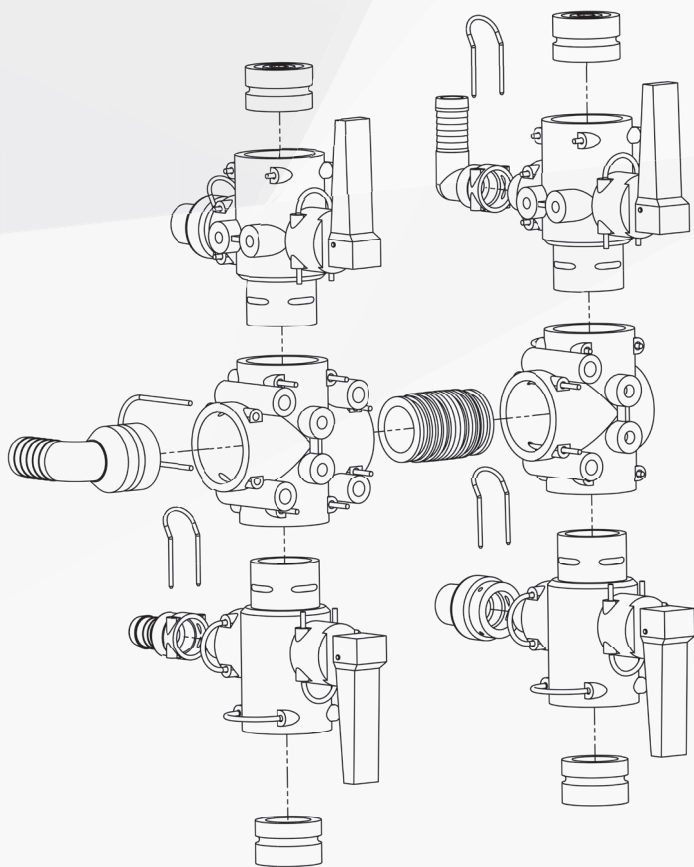


# Altek

## Parts Manual



# Contents

Introduction . . . . .	3
Boom Section Valves - Single Unit . . . . .	4
Boom Section Valves - Bank Mounting. . . . .	6
Boom Section Valves - Bank Connecting Rods . . . . .	6
Boom Section Valves - Bank Assembly. . . . .	7
Boom Section Valves - O-rings. . . . .	7
Spray Stop - Push-on Type . . . . .	8
Spray Stop - Push-in Type . . . . .	9
Nozzle Body Clamp . . . . .	10
Nozzle Bodies - Dual & Quad . . . . .	11
Nozzle Bodies - Direct Control - Single. . . . .	13
Nozzle Bodies - Direct Control - Dual. . . . .	14
Nozzle Bodies - Direct Control - Dual Assy . . . . .	15
Nozzle Bodies . . . . .	16
Fittings . . . . .	17
Retaining Pins . . . . .	21
Adapters . . . . .	22
Tee's . . . . .	25
Notes . . . . .	26

## Contact

Goldacres

1-3 Morang Crescent,

Mitchell Park Vic 3355

P: 03 5342 6399

F: 03 5342 6308

[info@goldacres.com.au](mailto:info@goldacres.com.au)

## Disclaimer

Any advice or recommendations given by Goldacres, Goldacres' dealers, or employees is given in good faith and provided based on the best information available to us. No liability or responsibility is accepted or implied as a result of any information or advice tendered in this operating manual or by Goldacres its agents or employees. The end user accepts all responsibility arising from that advice. No part of this manual may be reproduced without written permission from Goldacres. All photographs and technical information remain the property of Goldacres.

# Introduction

Altek GMBH designs and produces regulators, mechanical and electric ball valves, section valves and electric and pneumatic nozzle bodies as well as a full range of sprayer accessories and plug-in fittings for agricultural spray equipment.

Known for their resilient quality and modular assembly system Altek products are flexible, adaptable and make assembly and repair easy. Components can easily be configured for individual requirements. This system is now accepted as the standard by many sprayer manufacturers around the world.

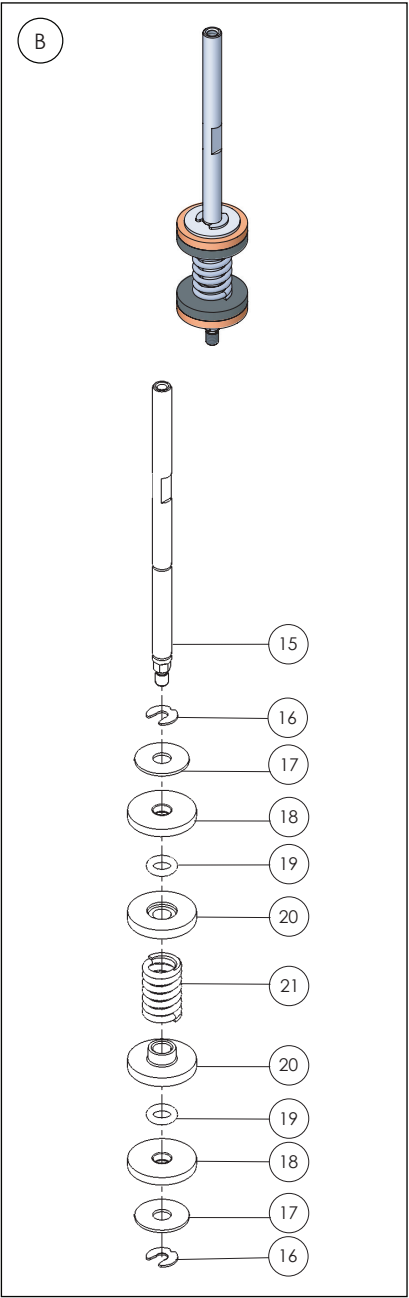
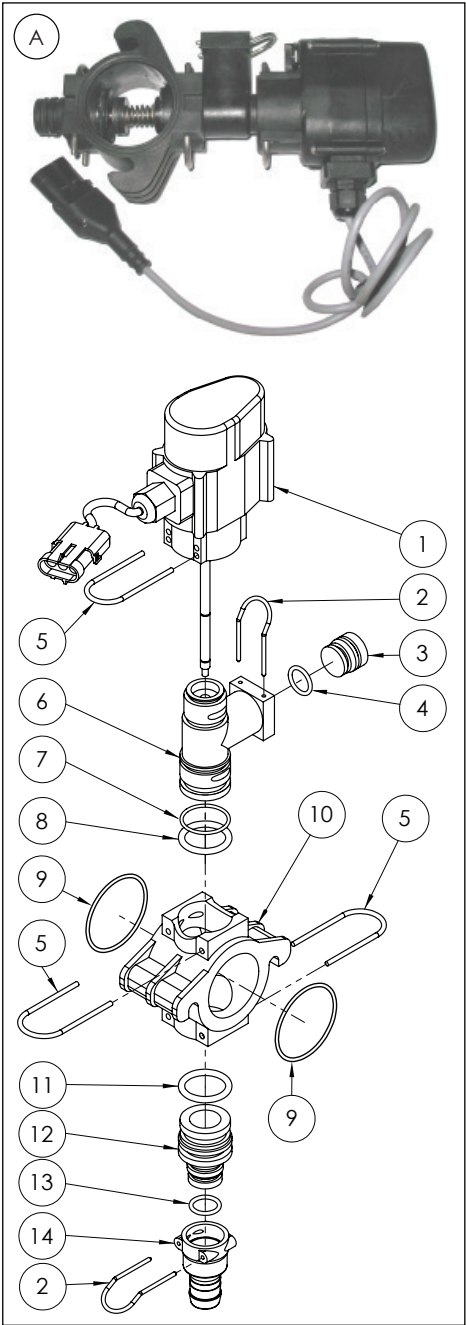
All components in the Altek regulator and valve systems can be combined with each other. Altek uses two connection diameters BS36 and BS24. You can thus combine all valves and regulators in these sizes with valves and regulators of the same blank cut. Bridging adapters can join different connection diameters.

The Altek plug in range of fittings consists of both male and female adaptors in sizes up to 50mm (AS50). The system allows for connections to be connected and disconnected quickly and easily by the use of the simple safety clip.

Much of the Altek range is ideal for retrofitting to existing sprayers and equipment.

Contact Goldacres parts on 1300 301 853 for orders or to enquire about any Altek part to satisfy your requirements.

# Boom Section Valves - Single Unit

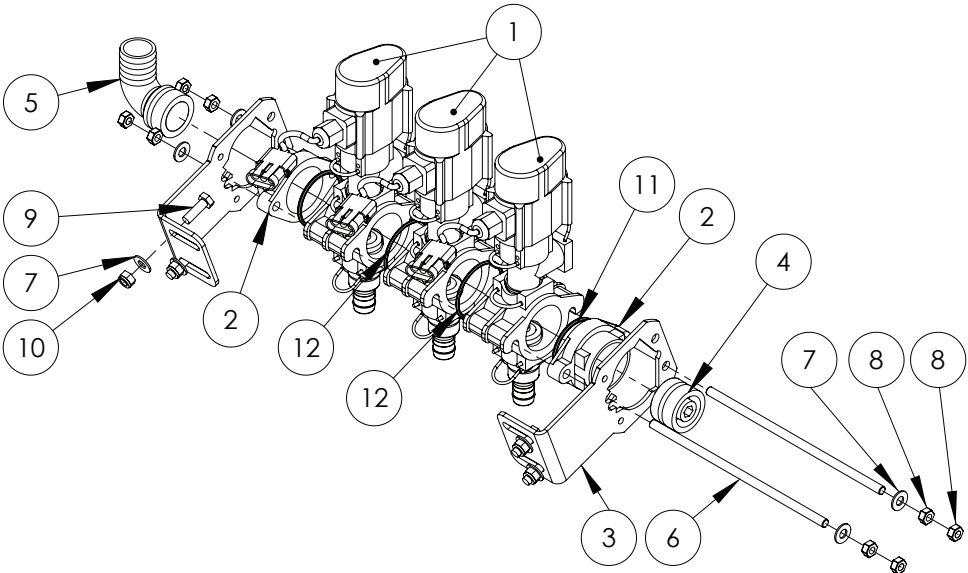


Continued over page

## Boom Section Valves - Single Unit

Pos.	Part No.	Description	Qty.
A	GA5065515	Boom valve assembly, Single, AS24, 3 wire, with connector (Includes plunger assembly - Part B)	-
B	GA2000262	Plunger assembly, Boom valve	-
1	GA2000266	Switch unit, 3 wire, Weatherpack plug, Boom Valve	1
2	GA5065695	Retaining pin, Suit AS24 plumbing fittings	2
3	GA2000269	Plug, AS24, Altek, 80376	1
4	GA5065840	O ring, 18.0 x 2.5 mm	1
5	GA5065701	Retaining pin, Suit AS30 plumbing fittings	3
6	GA2000267	Valve body, Boom Valve	1
7	GA5053510	O ring, 25 x 2.5 mm	1
8	GA5065830	O ring, 24.3 x 4.2 mm, FPM75	1
9	GA5012507	O Ring 55.25 x 2.62 mm	2
10	GA5065825	Manifold piece, Boom valve	1
11	GA5065830	O ring, 24.3 x 4.2 mm, FPM75	1
12	GA5065835	Plug in adapter, AS30 x AS24	1
13	GA5001067	O Ring 17.1 x 2.6 mm	1
14	GA5065640	Hose barb, AS24 female x 20mm hose	1
15	GA2000263	Plunger rod, Boom valve	1
16	GA5054650	Circlip, Boom Valve	2
17	GA5054640	Washer 17.8 x 6.1 x 1 mm	2
18	GA5054645	Rubber Plunger Seal, Boom Valve	2
19	GA5053515	O-ring, seal, 4.34 x 3.53 mm, FPM75, suit boom valve, Altek, 80414	2
20	GA2000264	Plunger spring cap, Boom valve	2
21	GA2000265	Plunger spring, Boom valve	1

# Boom Section Valves - Bank Mounting



Pos.	Part No.	Description	Qty.
1	GA5065515	Valve, Boom Section, Single, AS24, 3 wire, with connector	3
2	GA5065810	End cap, Altek boom valve	2
3	GA5065800	Altek boom valve mounting bracket	2
4	GA4582160	Plumbing adaptor, Plug, AS40 male x G1/4" Female Thread	1
5	GA5065620	Hose barb, Elbow, 90 degree, AS40 x 33mm hose barb	1
6	GA5065805	Connecting Rod, M8 x 220mm, Suit 3 Bank (303 SS)	2
7	GA5003643	Washer 8mm Flat SS HD	12
8	GA5011499	Nut M8 ZP	8
9	GA5004711	Bolt M8 x 25 GR8.8 ZP	4
10	GA5004917	Nut M8 Nyloc ZP	4
11	GA5048385	O ring, 42.5 x 2.62 mm, BS131, suit 2" hose barb	1
12	GA5012507	O Ring 55.25 x 2.62 mm	2

# Boom Section Valves - Bank Connecting Rods



Part No.	Description
GA5065805	Connecting Rod suits 3 bank, 303 SS, M8 x 20 mm thread, 220 mm length
GA4562055	Connecting Rod suits 4 bank, 303 SS, M8 x 20 mm thread, 280 mm length
GA4562125	Connecting Rod suits 5 bank, 303 SS, M8 x 20 mm thread, 330 mm length
GA4562050	Connecting Rod suits 6 bank, 303 SS, M8 x 20 mm thread, 380 mm length
GA4562045	Connecting Rod suits 7 bank, 303 SS, M8 x 20 mm thread, 430 mm length
GA4562040	Connecting Rod suits 8 bank, 303 SS, M8 x 20 mm thread, 480 mm length

# Boom Section Valves - Bank Assembly



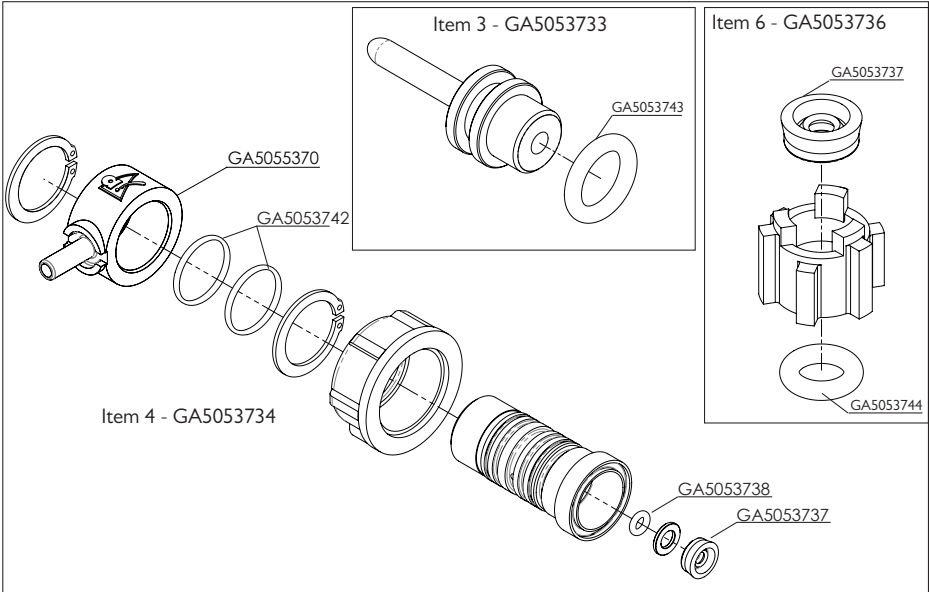
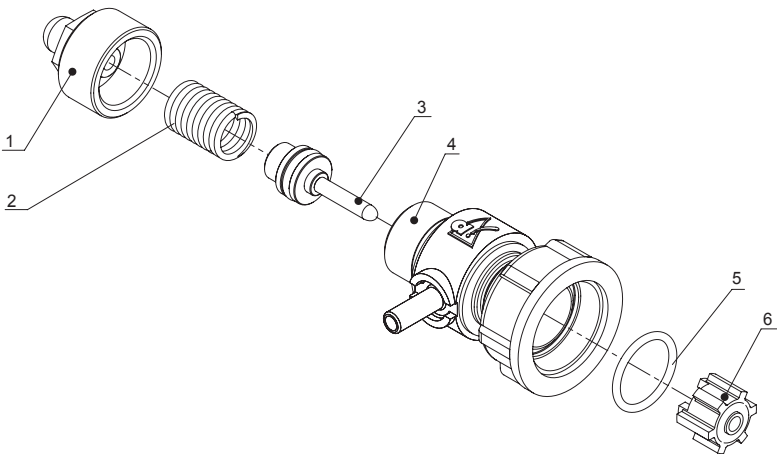
Part No.	Description
GA5065740	Section valve assembly - 3 section
GA5065741	Section valve assembly - 4 section
GA5065704	Section valve assembly - 5 section
GA5065705	Section valve assembly - 6 section
GA5065706	Section valve assembly - 7 section
GA5065710	Section valve assembly - 8 section

# Boom Section Valves - O-rings



Part No.	Description
GA5012507	O Ring 55.25 x 2.62 mm
GA5048385	O ring, 42.5 x 2.62 mm, BS131
GA5065820	O ring, 38 x 3 mm, Suit AS40 fittings
GA5065815	O ring, 35 x 4 mm, Suit AS40 fittings
GA5053520	O ring, 59 x 2.5 mm, NBR 70
GA5001067	O ring, 17.12 x 2.62 mm

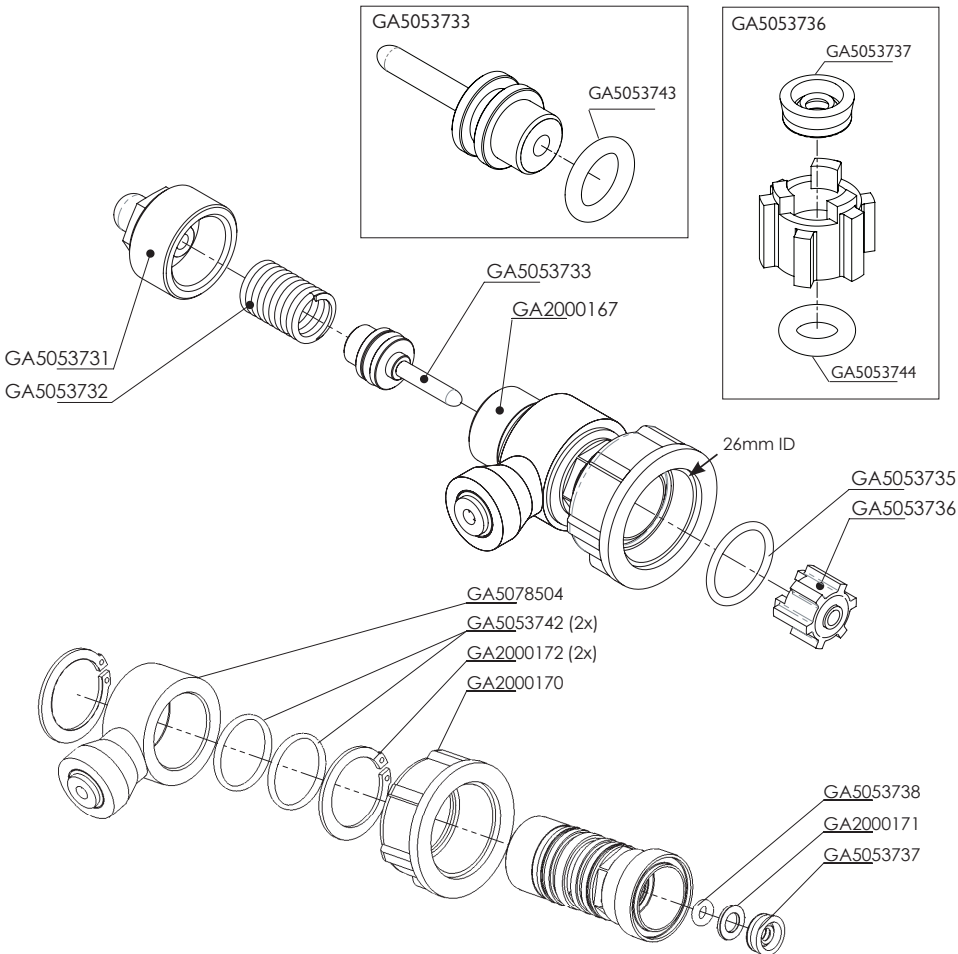
# Spray Stop - Push-on Type



Pos.	Part No.	Description	Qty.
-	GA5065520	Spray Stop, RapidFire, Suit Teejet nozzle body, Altek	-
1	GA5053731	End Cap with Breather	1
2	GA5053732	Spring, 10 Bar	1
3	GA5053733	Piston	1
4	GA5053734	Valve Body	1
5	GA5053735	O-ring external	1
6	GA5053736	Plunger	1

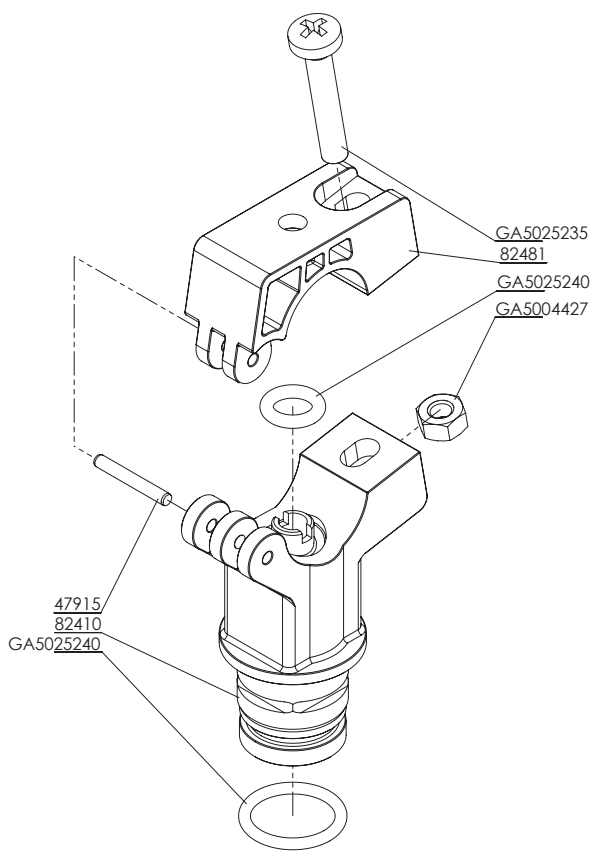


# Spray Stop - Push-in Type



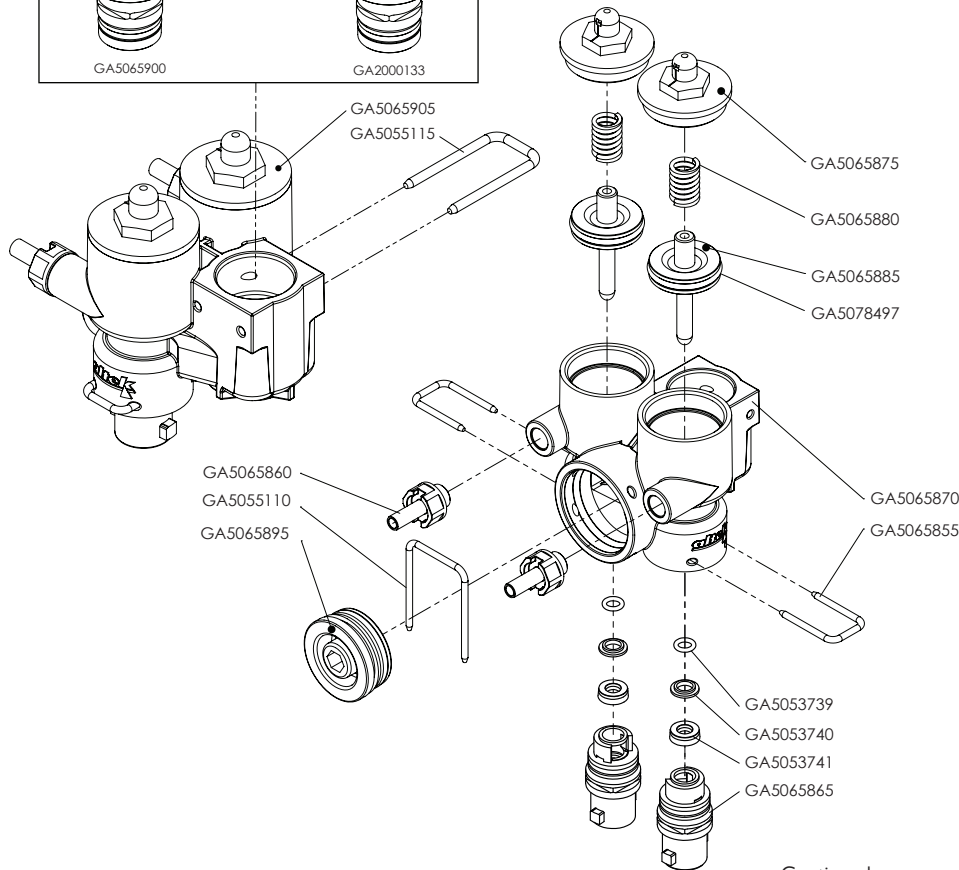
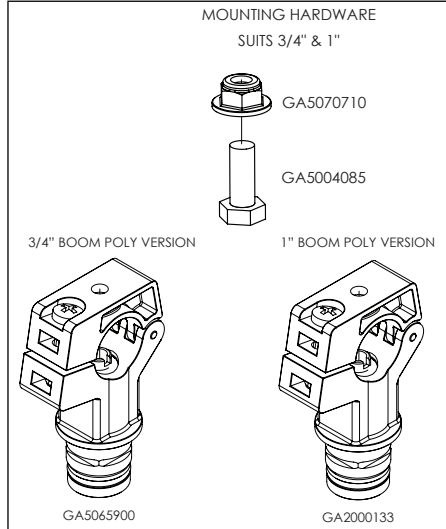
Part No.	Description	Qty.
GA5065520	Spray Stop, 6mm, Rapidfire	-
GA5053731	End Cap with Breather	1
GA5053732	Spring, 10 Bar	1
GA5053733	Piston	1
GA5053734	Valve Body	1
GA5053735	O-ring external	1
GA5053736	Plunger	1
GA5053737	Nut ring, 4 x 10 x 4.2 mm FPM	1
GA5053738	O ring, 3.68 x 1.78 mm FPM 75	1
GA5053742	O ring, 16 x 1.5 mm	2
GA5053743	O ring, 9 x 2.5 mm	1
GA5053744	O ring, 6.02 x 2.62 mm	1

# Nozzle Body Clamp



Part No.	Description	Qty.
GA5065900	Clamp, Dual Nozzle Body, suit 3/4" Boom Poly, Includes Screw, Nut & O Ring	-
GA2000133	Clamp, Dual Nozzle Body, suit 1" Boom Poly, Includes Screw, Nut & O Ring	-
GA5025235	Screw, M6, Nozzle body clamp, Altek	1
82481	Nozzle body clamp, Upper section, Altek	1
GA5025240	O-ring, 9.5 x 3 mm EPDM, Nozzle body clamp, Altek	1
GA5004427	Nut M6 SS	1
47915	Pin, Nozzle body clamp, Altek	1
82410	Nozzle body clamp, Lower section, Altek	1
GA5025245	O-ring, 19 x 2.65 mm FPM80, Nozzle body clamp, Altek	1

# Nozzle Bodies - Dual & Quad

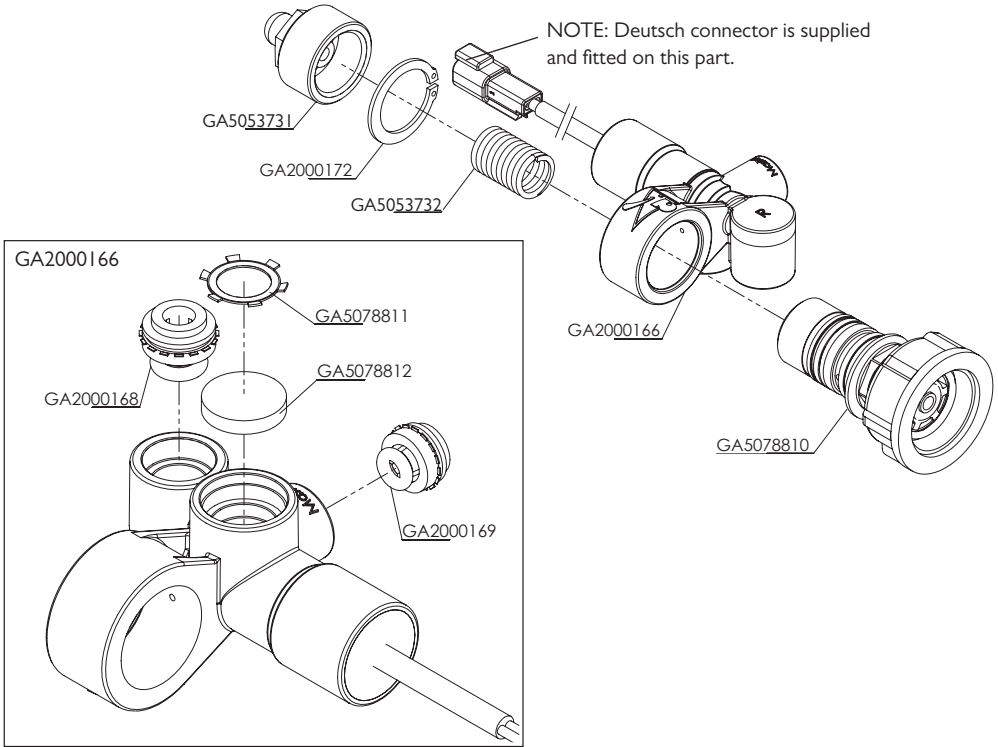


Continued over page

## Nozzle Bodies - Dual & Quad

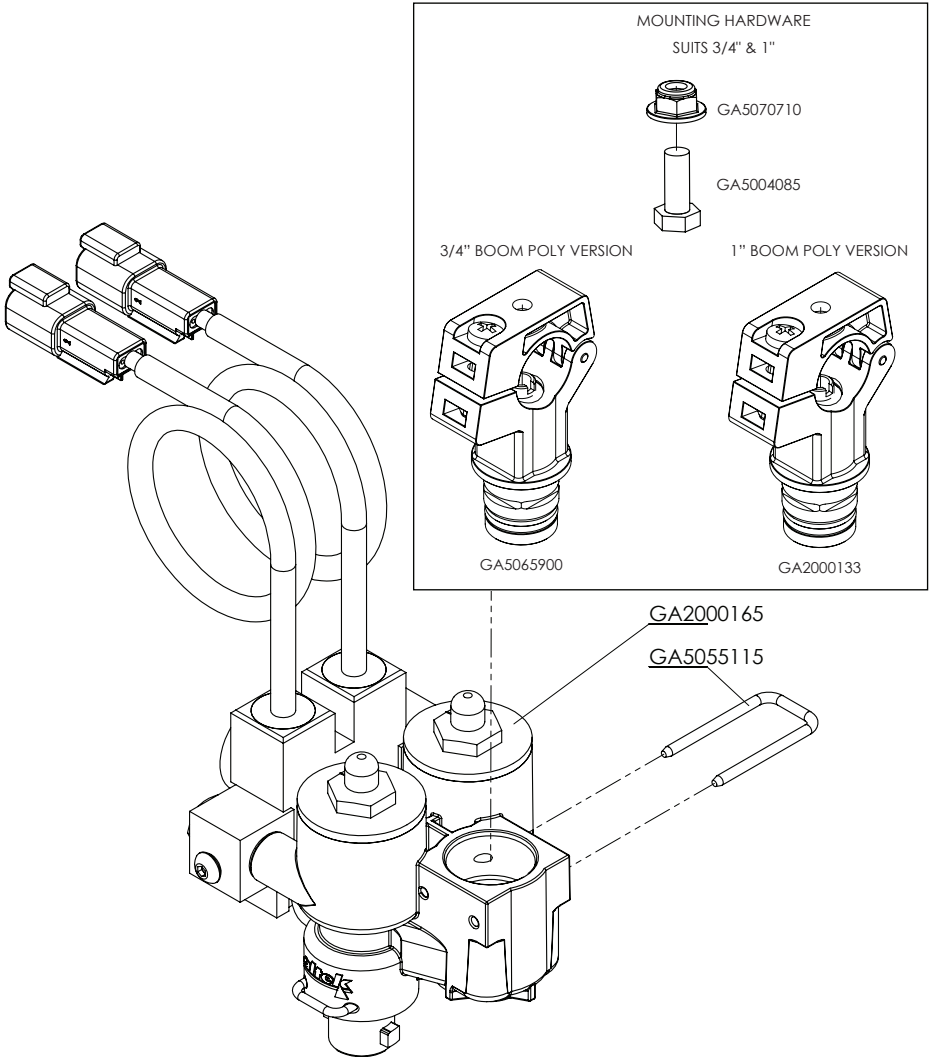
Part No.	Description	Qty.
GA5070710	Nut Flange Plastic M8 x 1.25	1
GA5004085	Bolt M8 x 20 GR8.8 ZP	1
GA5065845	Nozzle body, Twin/dual, Air shut off, 3/4"	-
GA5065850	Nozzle body, Quad, Air shut off, 3/4"	-
GA5065900	Nozzle body clamp, suit 3/4" Boom poly, Includes Screw, Nut and O-ring	1
GA2000133	Nozzle body clamp, suit 1" Boom poly, Includes Screw, Nut and O-ring	1
GA5055115	U clip, 20 x 40 x 3 mm	1
GA5065875	Top cap	2
GA5065840	O ring, 18.0 x 2.5 mm	-
GA5065880	Spring	2
GA5065885	Plunger	2
GA5078497	O ring, 23.5 x 2.6, FPM80	-
GA5065870	Outer body housing	1
GA5065855	U-Clip	2
GA5065865	Outlet, Valve inner, Nozzle body	2
GA5065860	Hose barb, Air fitting, 6mm hose x male thread, includes seal	2
GA5055110	U Clip 30 x 41 x 2.5 mm	1
GA5065895	Shutoff Plug	1
GA5053739	O ring, 5.6 x 1.8 FPM	2
GA5053740	Retaining disk, 11.8 x 6.8 x 2 mm	2
GA5053741	Lip seal, 6 x 12 x 4.2 mm FPM	2

# Nozzle Bodies - Direct Control - Single



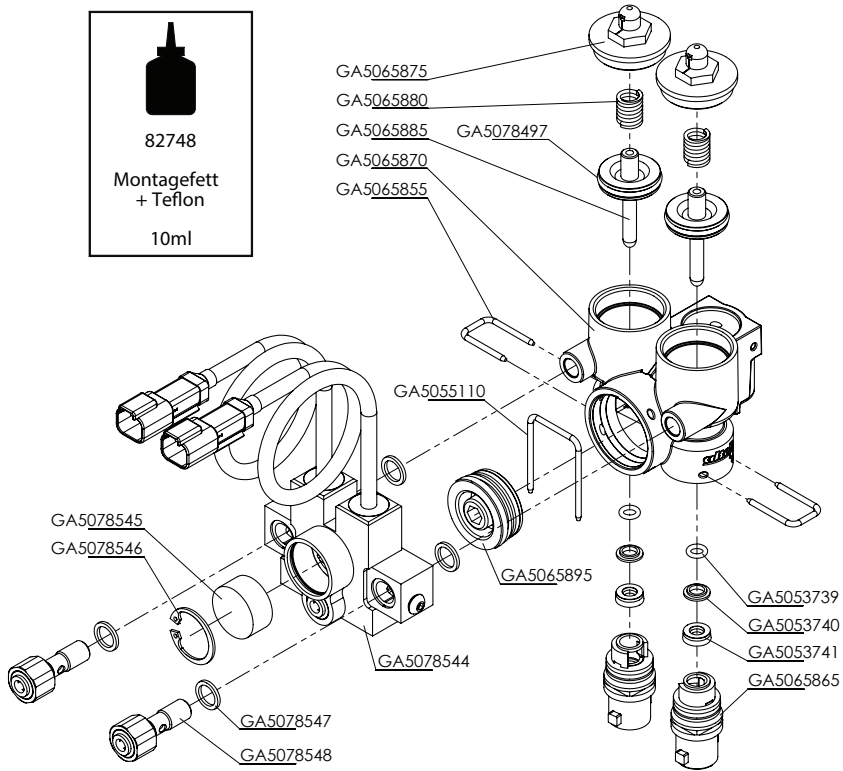
Part No.	Description	Qty.
GA5065525	Spray Stop, 6mm, Rapidfire	-
GA5053731	End Cap with Breather, suit GA5065520 Spray Stop, Altek	1
GA2000172	Circlip, Spray stop	1
GA5053732	Spring, 10 Bar, suit Spray Stop, Altek	1
GA2000166	Single nozzle body assembly, Direct control, Deutsch connector	1
GA5078810	Spray stop - Not available as spare part	1
GA5078811	Breather retainer - Not available as spare part	1
GA5078812	Breather - Not available as spare part	1
GA2000168	Inlet cartridge, 6mm, Plastic, Includes O-ring	1
GA2000169	Outlet cartridge, 4mm, Plastic, Includes O-ring	1

# Nozzle Bodies - Direct Control - Dual



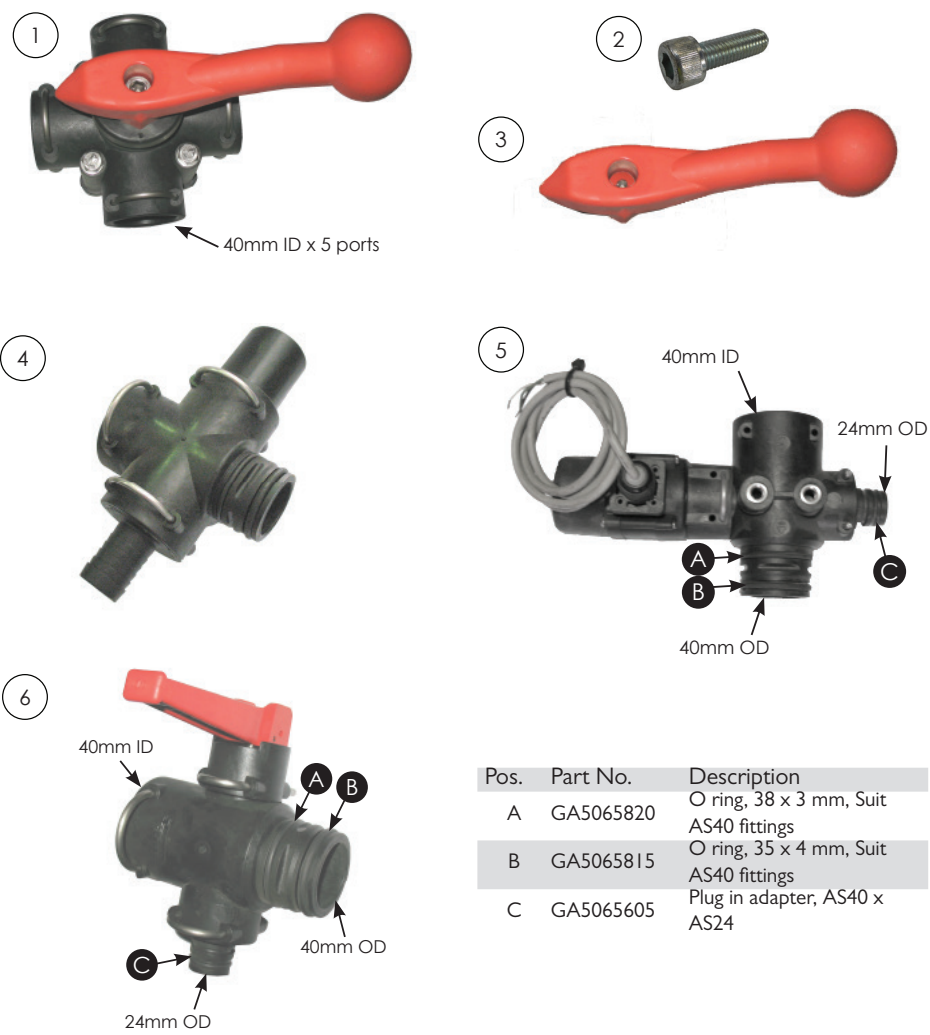
Part No.	Description	Qty.
GA5065846	Spray Stop, Nozzle body, Twin, dual, Solenoid Direct control Multi-Spray master, Air shut off, 3/4"	-
GA5070710	Nut Flange Plastic M8 x 1.25	1
GA5004085	Bolt M8 x 20 GR8.8 ZP	1
GA5065900	Nozzle body clamp, suit 3/4" Boom poly, Includes Screw, Nut and O-ring	1
GA2000133	Nozzle body clamp, suit 1" Boom poly, Includes Screw, Nut and O-ring	1
GA2000165	Dual nozzle body assembly, Direct control	1
GA5055115	U clip, 20 x 40 x 3 mm, 82297, Suit Altek nozzle body GA5065845	1

# Nozzle Bodies - Direct Control - Dual Assembly



Part No.	Description	Qty.
GA5078544	Dual solenoid valve, including 200mm cables & Deutsch connectors	1
GA5065870	Housing Multi-Spray 2-Nozzle	1
GA5053739	O ring, 5.6 x 1.8 FPM	2
GA5053740	Stainless washer	2
GA5053741	Lip Seal 6 x 12 x 4.2 mm	2
GA5065865	Nozzle holder 5° complete, 0°, 0°	2
GA5065855	U-Clip AS20	2
GA5065885	Stainless piston complete with O-ring	2
GA5078497	O-ring, 23.5 x 2.6 mm, FPM80	-
GA5065880	Spring	2
GA5065875	Cylinder Cap	2
GA5065895	Blanking Plug	1
GA5055110	U-clip 30 x 41 x 2.5 mm	1
GA5078547	Seal, White PVC	4
GA5078545	Breather insert, 25.5 x 12 x 12 mm	1
GA5078546	Circlip, 26 x 1.2 mm	1
GA5078548	Push fitting, Air line, 6mm	2

# Nozzle Bodies

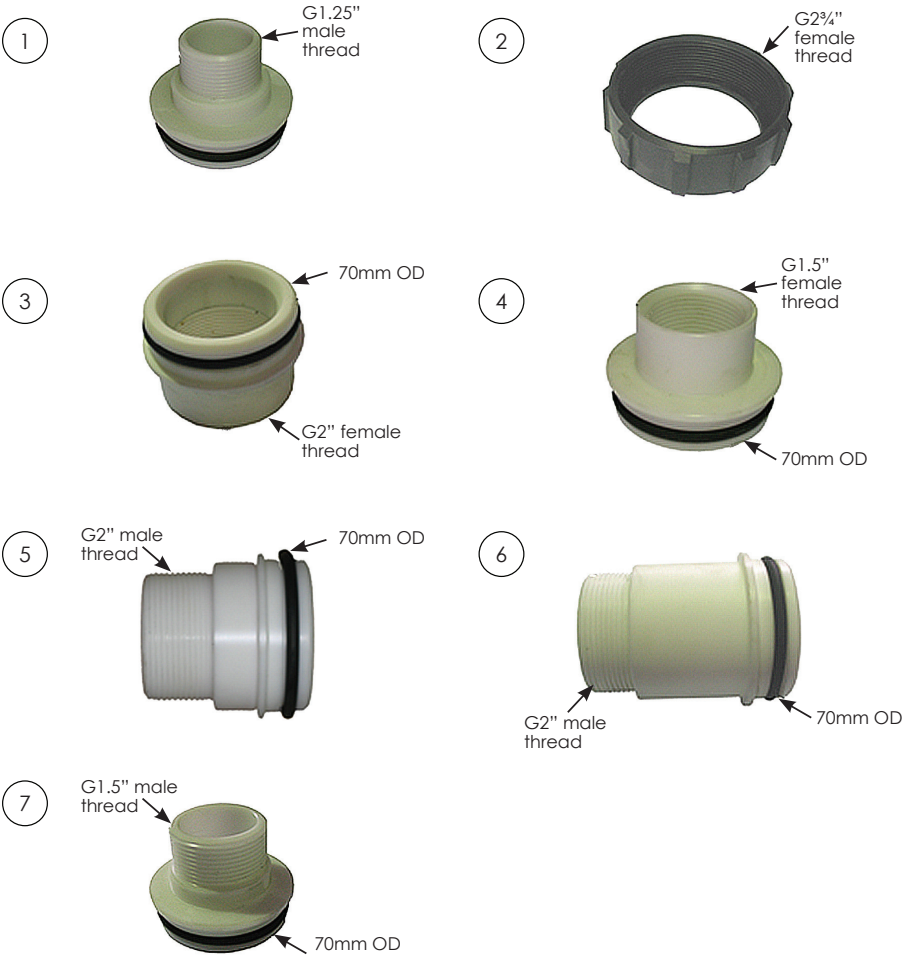


Pos.	Part No.	Description
A	GA5065820	O ring, 38 x 3 mm, Suit AS40 fittings
B	GA5065815	O ring, 35 x 4 mm, Suit AS40 fittings
C	GA5065605	Plug in adapter, AS40 x AS24

Pos.	Part No.	Description
1	GA5065530	Valve,Ball, 5 x AS40 female inlet / outlets, Lever handle
2	GA5022482	SHCS M10 x 35 GR 12.9 ZP
3	GA5065531	Handle, Red plastic, Suit 5 way ball valve
4	GA5065500	Relief Valve, pressure control, AS40, 10 bar 145 PSI
5	GA5065550	Valve, Quick Fit, 2 Way, Electric
6	GA5065545	Valve, Quick fit flip top, 2 way, AS40 male x AS24 female x AS40 female

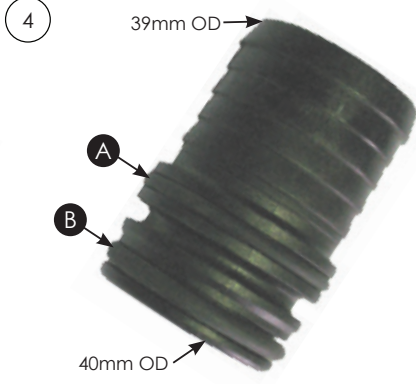


# Fittings



Pos.	Part No.	Description
1	GA5065770	Fitting, G1.25 male
2	GA5065775	Nut, G2 3/4"
3	GA5065780	Fitting, G2 female
4	GA5065785	Fitting, G1.5 female
5	GA5065760	Fitting, G2 male short
6	GA5065755	Fitting, G2 male long
7	GA5065765	Fitting, G1.5 male

# Fittings



Pos.	Part No.	Description
A	GA5065820	O ring, 38 x 3 mm, Suit AS40 fittings
B	GA5065815	O ring, 35 x 4 mm, Suit AS40 fittings
1	GA5065575	Hose barb, Straight, AS40 x 20mm hose
2	GA5065580	Hose barb, Straight, AS40 x 25mm hose
3	GA5065585	Hose barb, Straight, AS40 x 33mm hose
4	GA5065590	Hose barb, Straight, AS40 x 39mm hose

# Fittings

1



2



3



4



5



6



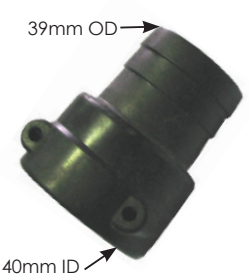
Pos.	Part No.	Description
1	GA5065630	Hose barb, AS20 female x 12mm hose
2	GA5065635	Hose barb, AS20 female x 17mm hose
3	GA5065745	Hose barb, AS24 female x 15mm hose
4	GA5065640	Hose barb, AS24 female x 20mm hose
5	GA5065645	Hose barb, AS40 female x 20mm hose
6	GA5065650	Hose barb, AS40 female x 25mm hose

# Fittings

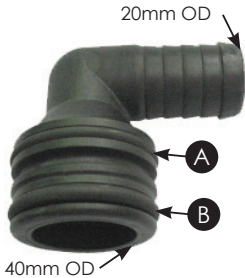
1



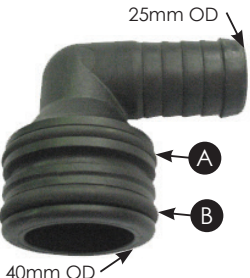
2



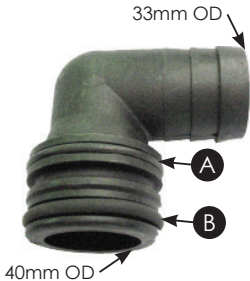
3



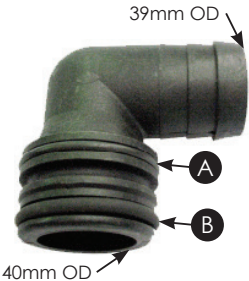
4



5

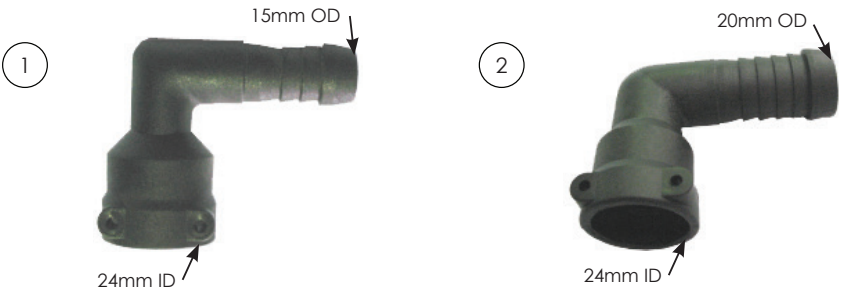


6



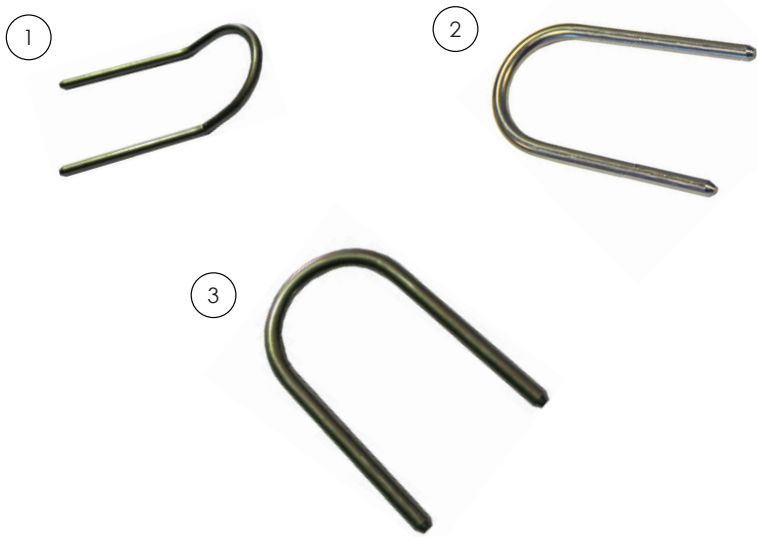
Pos.	Part No.	Description
A	GA5065820	O ring, 38 x 3 mm, Suit AS40 fittings
B	GA5065815	O ring, 35 x 4 mm, Suit AS40 fittings
1	GA5065655	Hose barb, Straight, AS40 x 33mm hose
2	GA5065660	Hose barb, Straight, AS40 x 39mm hose
3	GA5065610	Hose barb, Elbow, 90 degree, AS40 x 20mm hose
4	GA5065615	Hose barb, Elbow, 90 degree, AS40 x 25mm hose
5	GA5065620	Hose barb, Elbow, 90 degree, AS40 x 33mm hose
6	GA5065625	Hose barb, Elbow, 90 degree, AS40 x 39mm hose

# Fittings



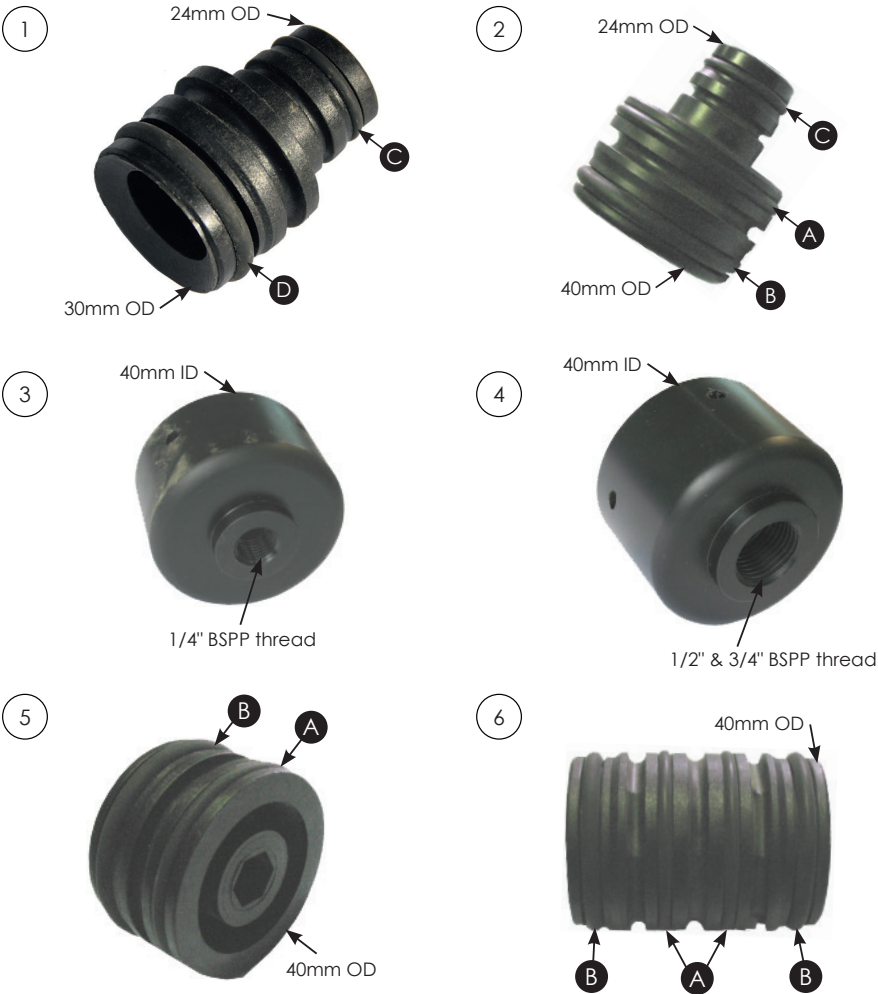
Pos.	Part No.	Description
1	GA5065750	Hose barb, Elbow, 90 degree, AS24 x 15mm hose
2	GA5065675	Hose barb, Elbow, 90 degree, AS24 x 20mm hose

# Retaining Pins



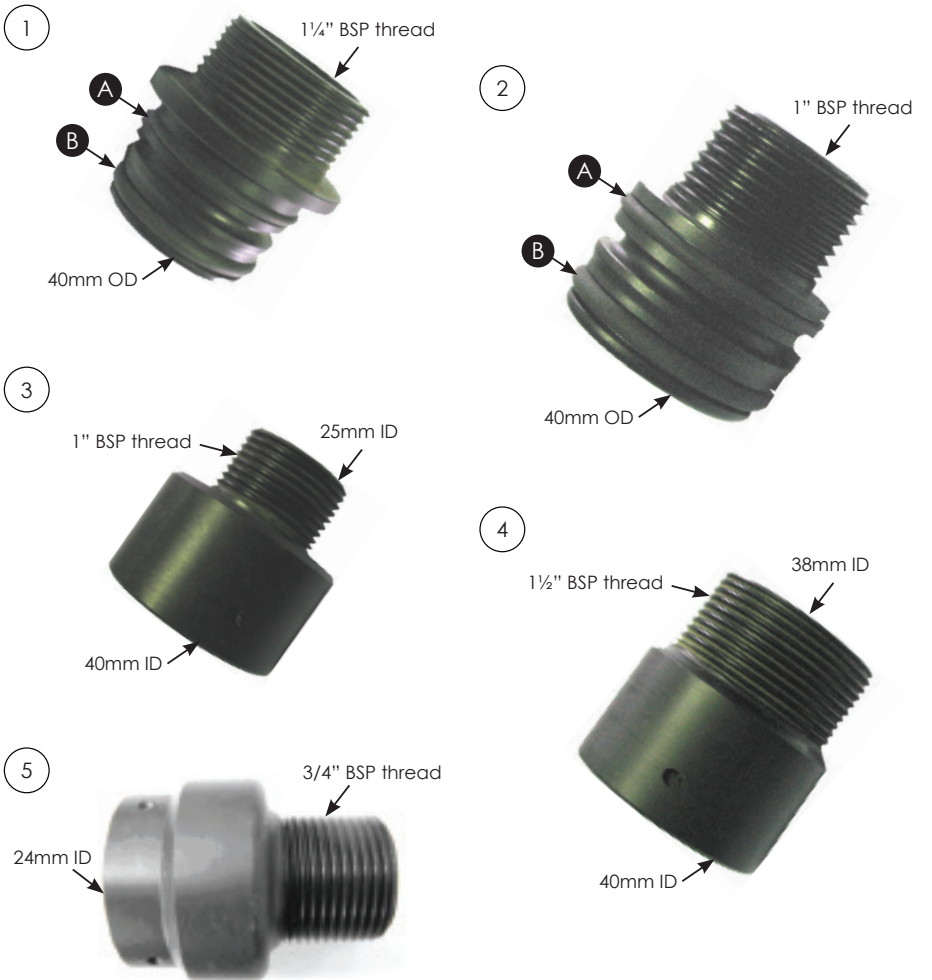
Pos.	Part No.	Description
1	GA5065695	Retaining pin, AS24
2	GA5065701	Retaining pin, AS30
3	GA5065690	Retaining pin, AS40

# Adapters



Pos.	Part No.	Description
A	GA5065820	O ring, 38 x 3 mm, Suit AS40 fittings
B	GA5065815	O ring, 35 x 4 mm, Suit AS40 fittings
C	GA5001067	O ring, 17.12 x 2.62 mm
D	GA5065830	O ring, 24.3 x 4.2 mm, FPM75
1	GA5065835	Plug in adapter, AS30 x AS24
2	GA5065605	Plug in adapter, AS40 x AS24
3	GA4582400	Cap Altek AS40 with 1/4" BSPP Female Thread (Delron)
4	GA4582405	Cap Altek AS40 with 1/2" BSPP Female Thread (Delron)
	GA4582410	Cap Altek AS40 with 3/4" BSPP Female Thread (Delron)
5	GA5065680	Plug, AS40 male
6	GA5065735	Plumbing adaptor, AS40 male x AS40 male

# Adapters



Pos.	Part No.	Description
A	GA5065820	O ring, 38 x 3 mm, Suit AS40 fittings
B	GA5065815	O ring, 35 x 4 mm, Suit AS40 fittings
1	GA5065595	Plumbing adaptor, AS40 male x 1-1/4" male thread
2	GA5065600	Plumbing adaptor, AS40 male x 1" male thread
3	GA5065665	Plumbing adaptor, AS40 female x 1" male thread
4	GA5065670	Plumbing adaptor, AS40 female x 1-1/2" male thread
5	GA4582415	Plumbing adaptor, AS24 female x 3/4" male thread

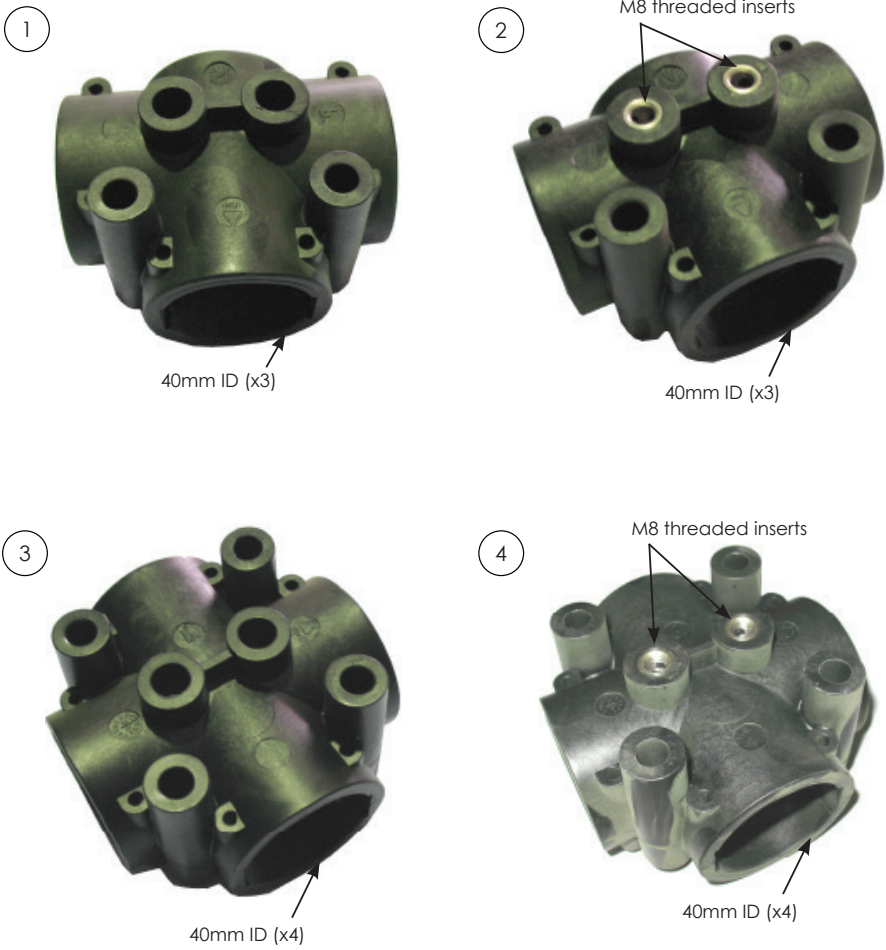
# Adapters



Pos.	Part No.	Description
A	GA5065820	O ring, 38 x 3 mm, Suit AS40 fittings
B	GA5065815	O ring, 35 x 4 mm, Suit AS40 fittings
1	GA4582385	Coupling, AS40 female x 1" NPT male thread
2	GA4582160	Plumbing adaptor, Plug, AS40 male x 1/4" female thread
3	GA4582300	Coupling Altek AS40 Female to Female (Delron)
4	GA4582395	Plumbing Fitting, Cap, AS40
5	GA4582345	Dummy plug AS40 x 1/2" female (45mm Delron)



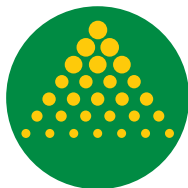
# Tee's



Pos.	Part No.	Description
1	GA5065555	Tee, 3 Port, AS40 female, no M8 inserts
2	GA5065560	Tee, 3 Port, AS40 female, M8 inserts
3	GA5065565	Tee, 4 Port, AS40 female, no M8 inserts
4	GA5065570	Tee, 4 Port, AS40 female, M8 inserts

## Notes

## Notes



**GOLDACRES**

[www.goldacres.com.au](http://www.goldacres.com.au)