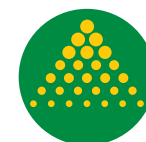


Prairie Compact 1000L

GA8701488 REV 00

GA6500019 - PARTS MANUAL



GOLDACRES



For further information about any of the products shown please visit - www.goldacres.com.au

© Goldacres Trading 2021
This publication and all designs are copyright.

No part, products or designs may be reproduced by any process except in accordance with the Copyright act 1968.

All information in this operator's manual is based on the latest product information available at the time of printing. The policy of Goldacres is one of continuous improvement and as such, Goldacres reserve the right to alter any specifications and designs without notice and without incurring any obligation regarding such changes.

No part of this manual may be reproduced without written permission from Goldacres. All photographs and technical information remain the property of Goldacres.

Goldacres Trading Pty Ltd
3 Morang Crescent
Mitchell Park Vic 3355
Ph: 03 5342 6399
Fax: 03 5342 6308

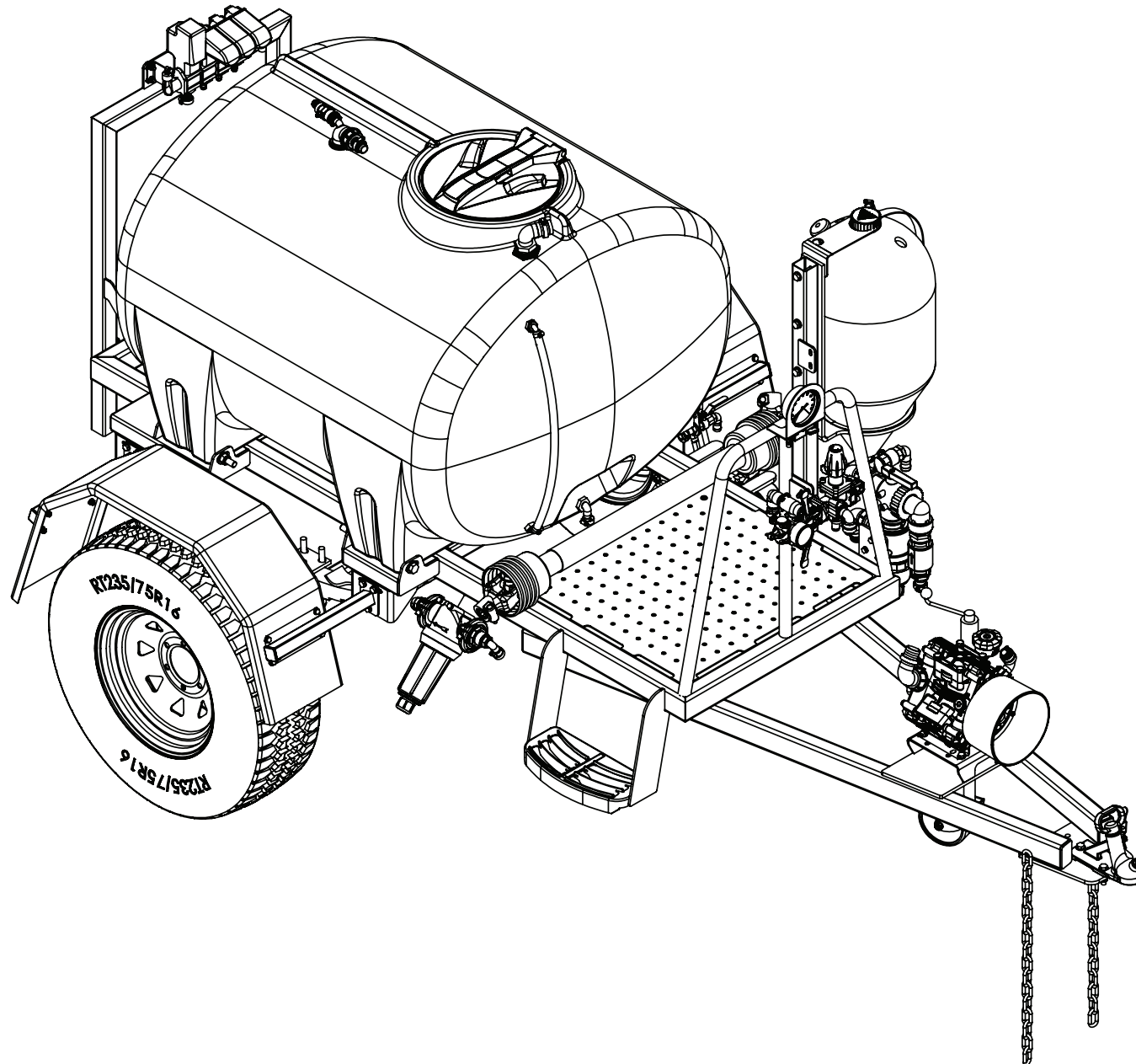


Contents	3
Prairie Compact 1000L	4
Rolling Chassis	6
Axle Assembly	7
Jockey Wheel	8
Pump Assembly	9
Pump Breakdown	10
Main Tank Installation	12
Main Tank Assembly	13
Venturi Filler	14
Assemblies	15
45L Flush Water	16
3 Section, Boom Valve	17
Chem Probe	18
Main Tank Drain	19
Pressure Filter	20
Pressure Gauge	22
Tank Fill	23

Pressure Manifold	24
Suction Filter	26
Sump Drain	28
Chemical Suction Probe	29
Decals	30
Electrical	32
Plumbing	33
Nozzle Body	34
Nozzles, Caps, Filters and Washers	35
Miscellaneous Parts	36
Goldacres Terms & Conditions of Sale & Warranty	37



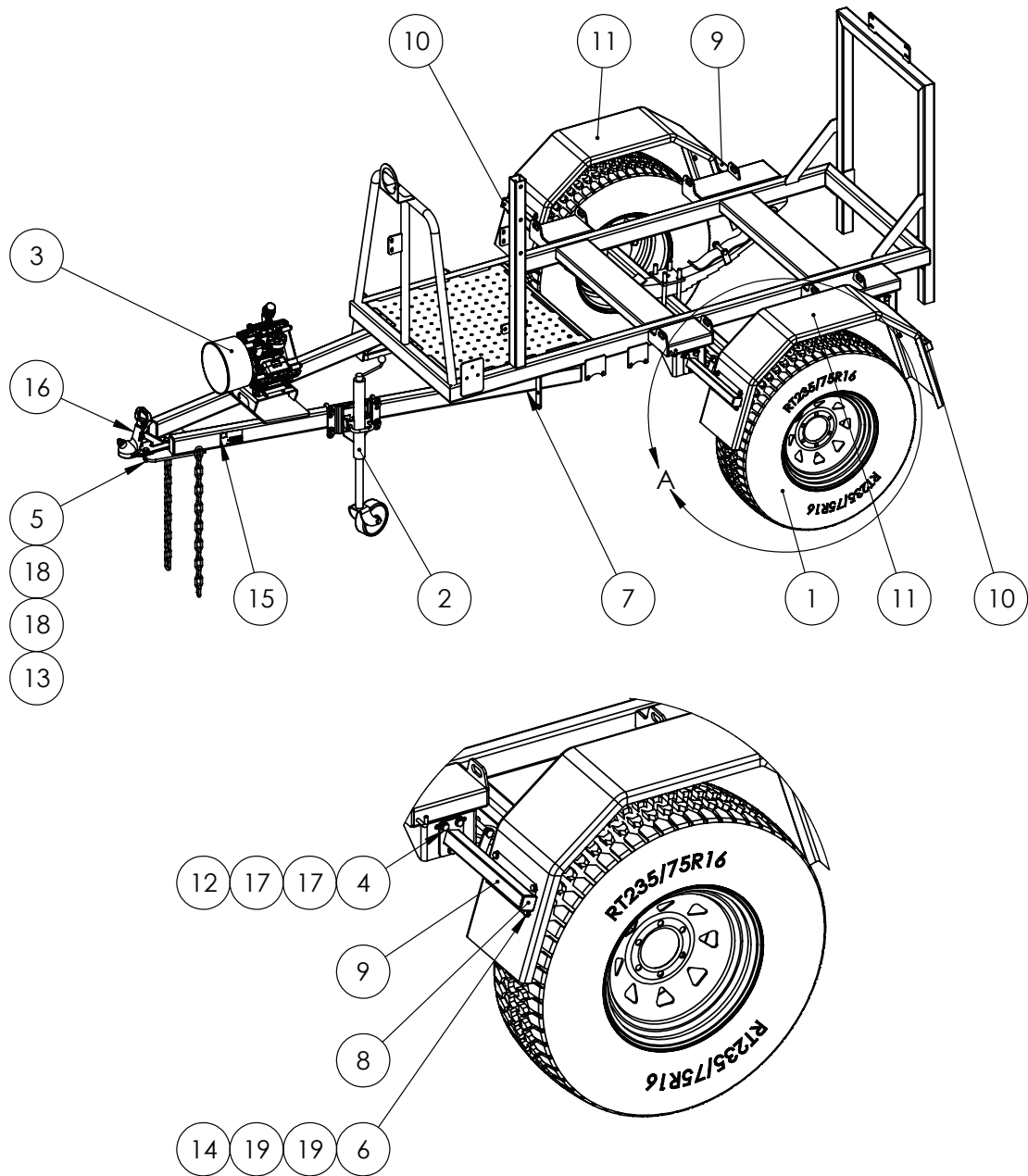
Prairie Compact 1000L



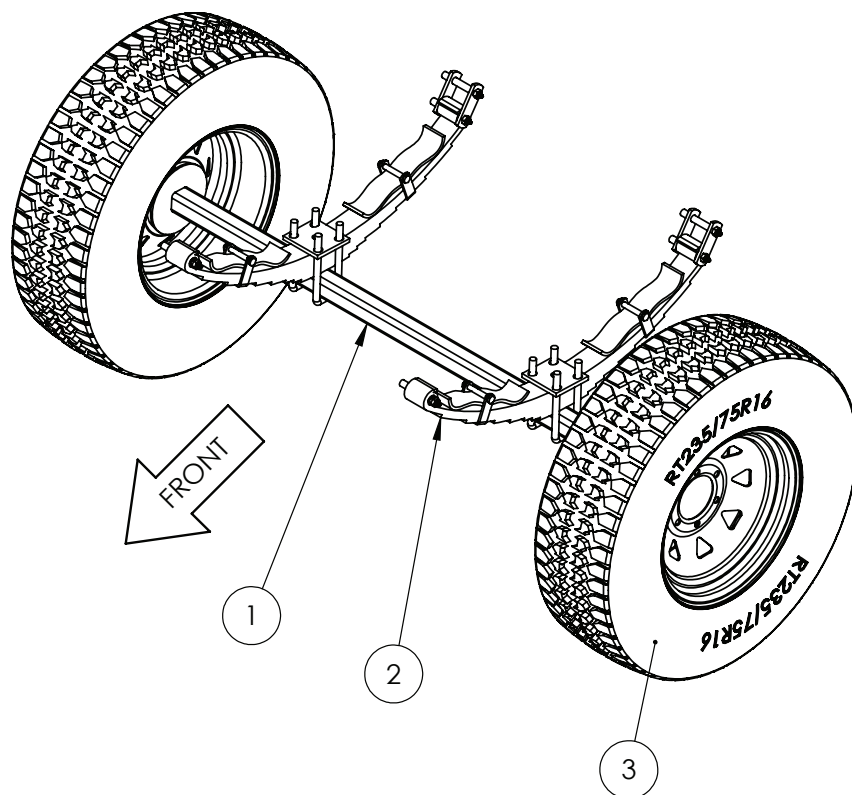




Rolling Chassis



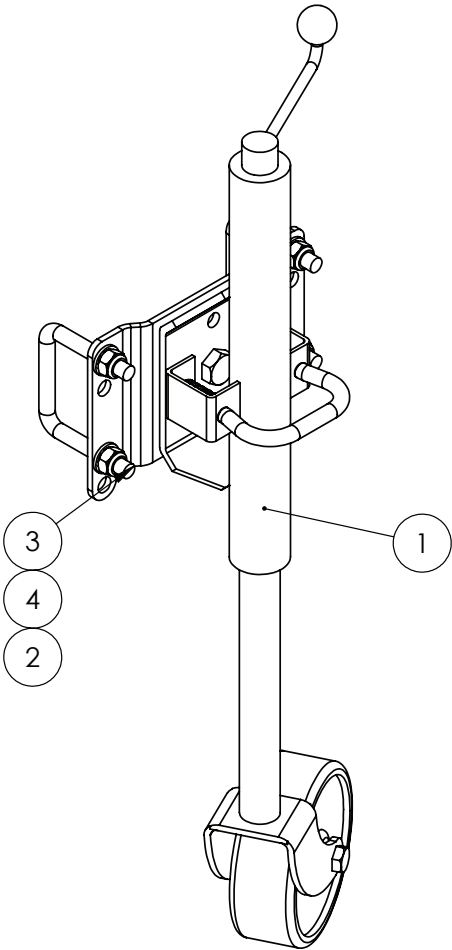
IF DESCRIPTION PREFIX IS ASSEMBLY DRAWING ONLY OR PRODUCTION DRAWING ONLY THE ITEM IS NOT FOR SALE			
ITEM	PART NUMBER	DESCRIPTION	QTY
1	GA4908860	ASSEMBLY DRAWING ONLY, AXLE, SPRING, WHEELS	1
2	GA4908885	ASSEMBLY DRAWING ONLY, JOCKEY WHEEL	1
3	GA4908890	ASSEMBLY DRAWING ONLY, PTO, PUMP	1
4	GA5065455	BOLT M10 X 30 GR8.8 ZP	12
5	GA5011239	BOLT M12 X 50 GR 8.8 ZP	3
6	GA5004085	BOLT M8 X 20 GR8.8 ZP	16
7	GA4602280	CHASSIS, LARGE FRAME PRAIRIE COMPACT, 1000L, MY19	1
8	GA5002963	INSERT 38X38MM CAP	4
9	GA4602505	MUD GUARD BRACKET, LEFT FRONT, RIGHT REAR	2
10	GA4602500	MUD GUARD BRACKET, RIGHT FRONT, LEFT REAR	2
11	GA5018925	MUDGUARD, SINGLE, SUIT 16" WHEEL	2
12	GA5000141	NUT M10 NYLOC ZP	12
13	GA5012461	NUT M12 NYLOC ZP	3
14	GA5004917	NUT M8 NYLOC ZP	16
15	GA5014955	SERIAL ID PLATE, STICK ON, GOLDACRES, BLACK, UNSTAMPED	1
16	GA5049100	TRAILER COUPLING, 50mm, BOLT ON	1
17	GA5000117	WASHER 10mm FLAT SS HD	24
18	GA5000577	WASHER 12mm FLAT SS HD	6
19	GA5003643	WASHER 8mm FLAT SS HD	32
GA6500019-01		ASSEMBLY DRAWING ONLY, PRAIRIE COMPACT, 1000L, STAGE 1	REV 00




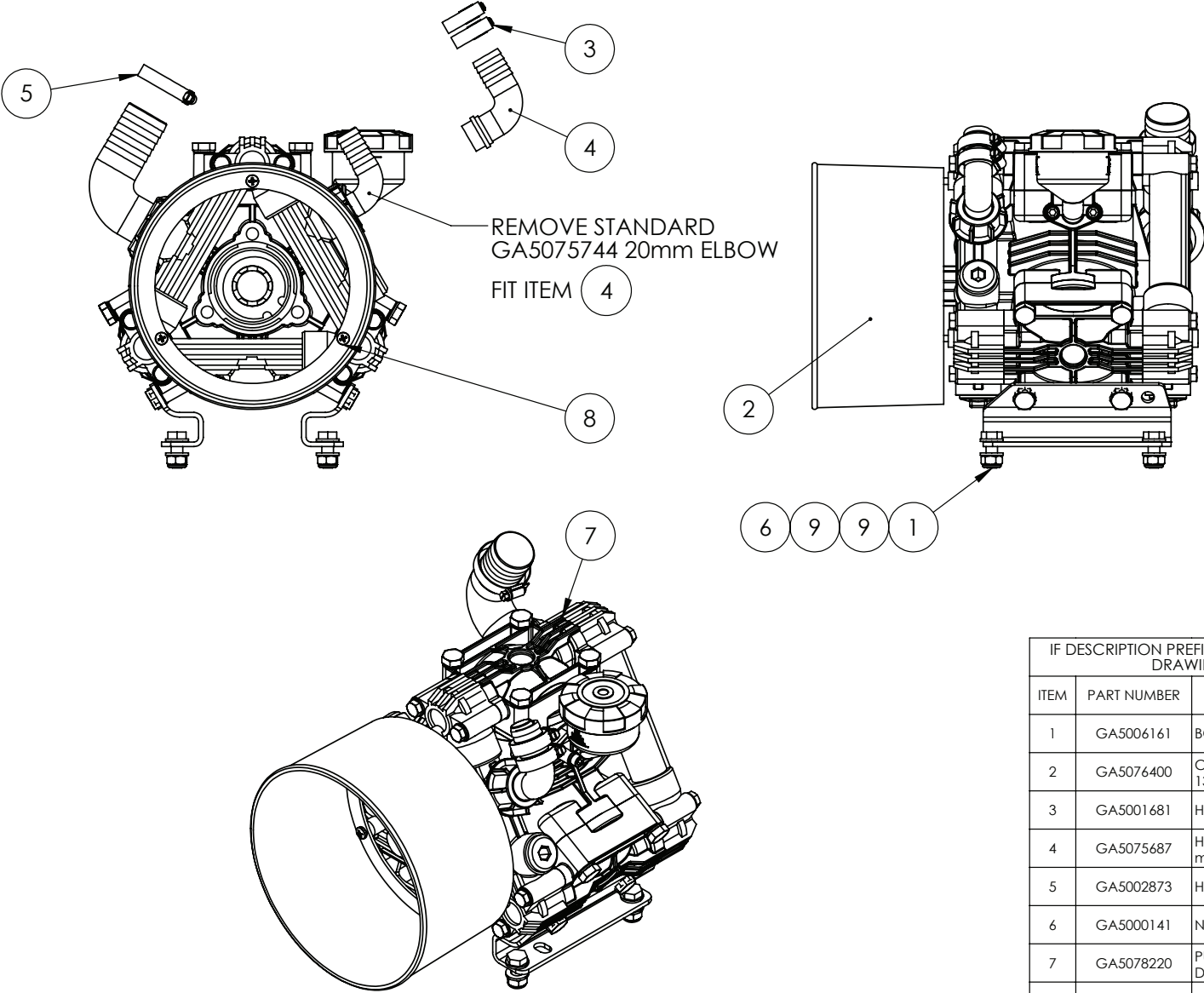
IF DESCRIPTION PREFIX IS ASSEMBLY DRAWING ONLY OR PRODUCTION DRAWING ONLY THE ITEM IS NOT FOR SALE			
ITEM	PART NUMBER	DESCRIPTION	QTY
1	GA5025060	AXLE, 2 TONNE, 50mm SQUARE WITH HUBS FITTED – 1595mm FACE TO FACE PART NUMBER. 115020	1
2	GA5025065	SPRING, 9 LEAF OUTBACK SPRING KIT PART NUMBER. 536079	1
3	GA4901400	WHEEL, 7 X 16, 6 STUD H/DUTY RIM, TYRE, 245/75R16	2
GA4908860		ASSEMBLY DRAWING ONLY, AXLE, SPRING, WHEELS	REV
GOLDACRES			



Jockey Wheel



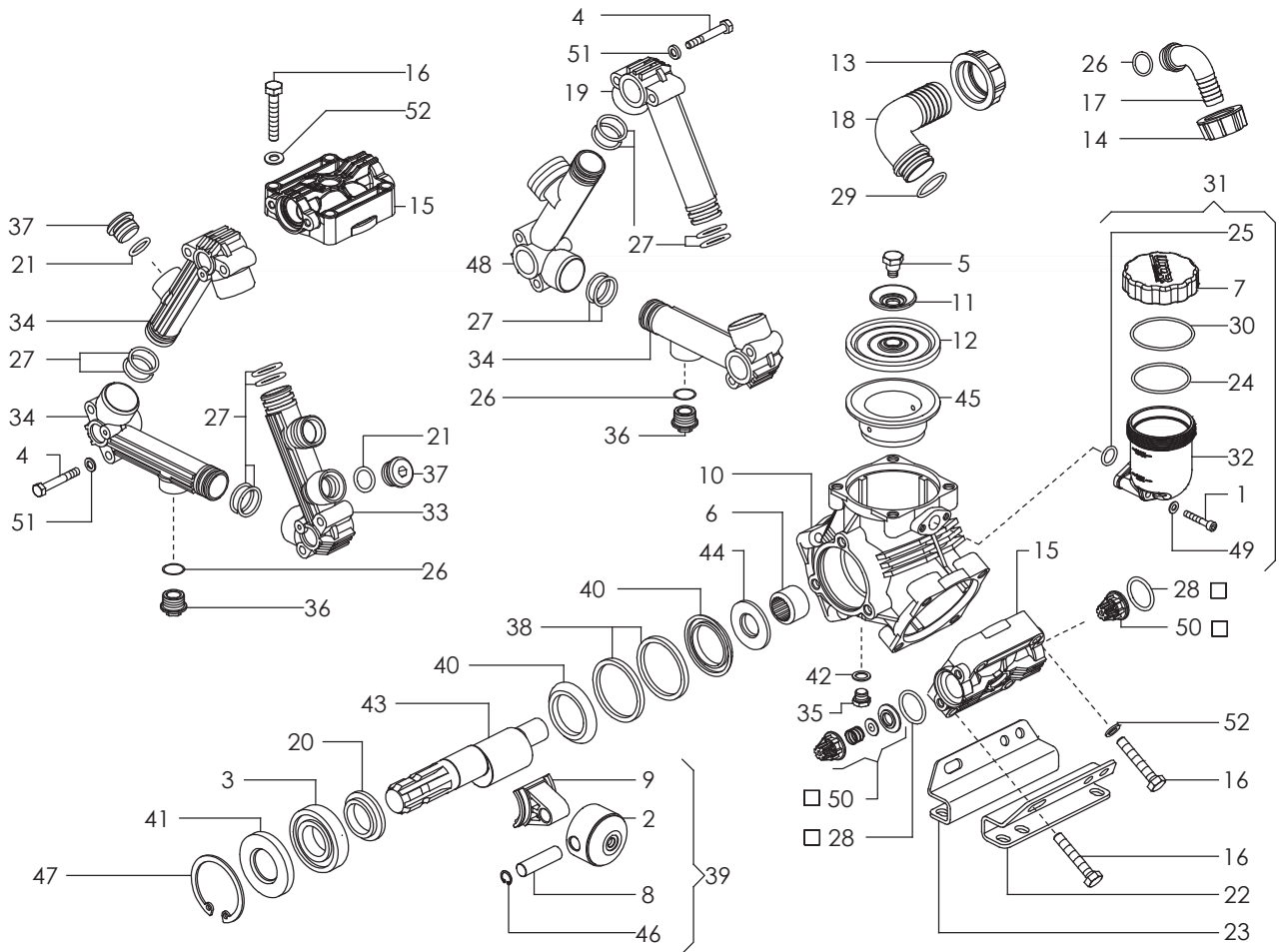
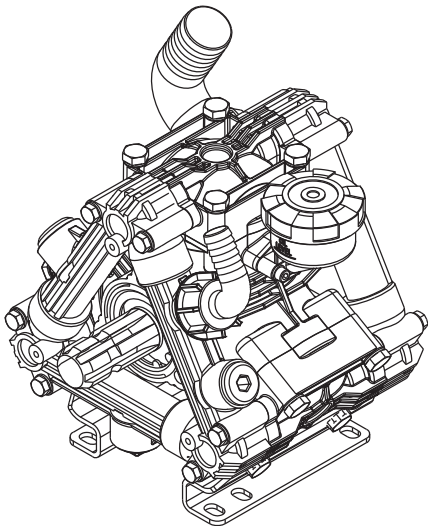
IF DESCRIPTION PREFIX IS ASSEMBLY DRAWING ONLY OR PRODUCTION DRAWING ONLY THE ITEM IS NOT FOR SALE			
ITEM	PART NUMBER	DESCRIPTION	QTY
1	GA5025080	JOCKEY WHEEL, 6" SWING UP PART NUMBER. 626190	1
2	GA5012461	NUT M12 NYLOC ZP	4
3	GA5075160	U BOLT, SQUARE TOP M12 X 76 X 80	2
4	GA5000577	WASHER 12mm FLAT SS HD	4
GA4908885		ASSEMBLY DRAWING ONLY, JOCKEY WHEEL	REV 00
			



IF DESCRIPTION PREFIX IS ASSEMBLY DRAWING ONLY OR PRODUCTION DRAWING ONLY THE ITEM IS NOT FOR SALE			
ITEM	PART NUMBER	DESCRIPTION	QTY
1	GA5006161	BOLT M10 X 25 GR8.8 ZP	4
2	GA5076400	COVER, PTO SHAFT, BLACK, SUIT 70, 85, 106, 121, 130, 121913	1
3	GA5001681	HOSE CLAMP, 1" SS (20-32/12W)	2
4	GA5075687	HOSE BARB, ELBOW, 90 DEGREE, FLY NUT END X 25 mm HOSE BARB, UDOR, 020275	1
5	GA5002873	HOSE CLAMP, 1 1/2" SS (32-50/12W)	1
6	GA5000141	NUT M10 NYLOC ZP	4
7	GA5078220	PUMP, DIAPHRAGM TYPE, ZETA 85, PTO SHAFT DRIVE, UDOR, SHAFT NOT INCLUDED, ZETA851C	1
8	GA5014827	SCREW PAN HEAD 12G X 1/2 ZP	3
9	GA5000117	WASHER 10mm FLAT SS HD	8
GA4908890 GOLDACRES			ASSEMBLY DRAWING ONLY, PTO, PUMP REV 00



Pump Breakdown



GA5078220	PUMP, DIAPHRAM TYPE ZETA 851C UDOR	REV 00
-----------	---------------------------------------	-----------



DIAPHRAGM PUMP, UDOR, ZETA 85 1C

ITEM	PART NUMBER	DESCRIPTION	ITEM	PART NUMBER	DESCRIPTION
1	180571	ALLEN SCREW M6X30 UNI5931 DACROMET, 180571	27	110131	O RING, 28.00 X 3.00, 110131
2	GA5078303	ALUMINIUM PLUNGER D60 "KAPPA 50/75..125", 120518	28	GA5076071	O RING, 31.43 X 3.53, 110127
3	GA5075730	BALL BEARING D35X72X17 6207, 021405	29	GA5076075	O RING, 32.00 X 3.0, 110142
4	180404	BOLT, 180404	30	1101B6	O RING, 58.42 X 2.62, 1101B6
5	GA5075660	BOLT, SUIT PUMP DIAPHRAGM, KAPPA / ZETA PUMPS, 010204	31	GA5077103	OIL RESERVOIR, ASSEMBLY, SUIT RO AND ZETA UP TO 200 SERIES PUMPS, 603313
6	GA5075625	BUSHING D25X32X26 HK25-26, 000607	32	120328	OIL RESERVOIR, SUIT DIAPHRAGM PUMP, 120328
7	020865	CAP, PUMP OIL RESERVOIR, 020865	33	GA5076532	OUTLET HOSE G1 M - G3/4 F ZETA 85/100, 160529
8	150207	CONNECTING ROD PIN, 150207	34	GA5076531	OUTLET HOSE G3/4 F ZETA 85/100, 160528
9	151930	CONNECTING ROD, 151930	35	GA5076514	PLUG G1/4, 160367
10	GA5075725	CRANKCASE "ZETA 85/100", 020976	36	GA5076512	PLUG G3/4, 160336
11	GA5075757	DIAPHRAGM DISK, KAPPA 25/33/55/ ZETA 70, 030143	37	GA5076518	PLUG, 3/4 MALE THREAD, 160387
12	GA2000097	DIAPHRAGM, SUIT DELTA 40/50/75/100/125	38	GA5075601	RETAINER RING "ZETA", 000102
13	GA5075797	FLY NUT, 1 1/2, HEAVY DUTY FOR USE ON SPRAY PUMPS, 060450	39	GA5078351	ROD ASSY "ZETA 85" D60, 601548
14	GA5075794	FLY NUT, 1, 060436	40	GA5075762	ROD SPACER "ZETA", 030252
15	160472	HEAD ZETA 85/100, 160472	41	000705	SEAL, 000705
16	GA5076563	HEX SCREW M10X60 UNI5737 DACROMET, 1804A9	42	GA5075800	SEAL, RUBBER, 13 ID X 19 OD X 1.5, SUIT DIAPHRAGM PUMP OIL PLUG, 060549
17	GA5075744	HOSE BARB, ELBOW, 90 DEGREE, PUMP INLET / OUTLET, 20mm HOSE, 025305	43	GA5075617	SHAFT "ZETA 85/100" (9) 1C, 0002C3
18	GA5076444	HOSE BARB, ELBOW, 90 DEGREE, RO / ZETA PUMP INLET / OUTLET X 38mm HOSE, 140688	44	GA5075752	SHIM DISK FOR A BALL BEARING, 030112
19	GA5076492	INLET-OUTLET HOSE "ZETA 85/100", 160125	45	GA5078256	SLEEVE D60 "ZETA 85", 020644
20	GA5075753	LEFT BEARING DISC "ZETA 85/100", 030124	46	GA5076456	SNAP RING D15, 150615
21	GA5076030	LOWER HOUSING, ULTRASONIC SENSOR, ULTRAGLIDE, RAVEN, 1060159627	47	GA5078307	SNAP RING D72, 150607
22	GA5076367	MOUNTING BASE PLATE, LEFT SIDE, KAPPA 75 / RO 130 PUMP, 120264	48	GA5076493	SUCTION HOSE G11/2 M ZETA 85/100, 160126
23	GA5076366	MOUNTING BASE PLATE, RIGHT SIDE, KAPPA 75 / RO 130 PUMP, 120263	49	GA5076490	SUCTION HOSE G2 M RO 210/250, 160117
24	110198	O RING, 110198	50	GA5077082	VALVE, CHECK, INLET / OUTLET, PUMP, WITH O RING, KAPPA, 600601, 6063Q5
25	GA5076072	O RING, 16.20 X 3.0, 110129	51	GA5076443	WASHER D8,4X16X1,6 DACROMET, 140348
26	GA5076060	O RING, 20.63 X 2.62, 110104	52	140349	WASHER, 140349



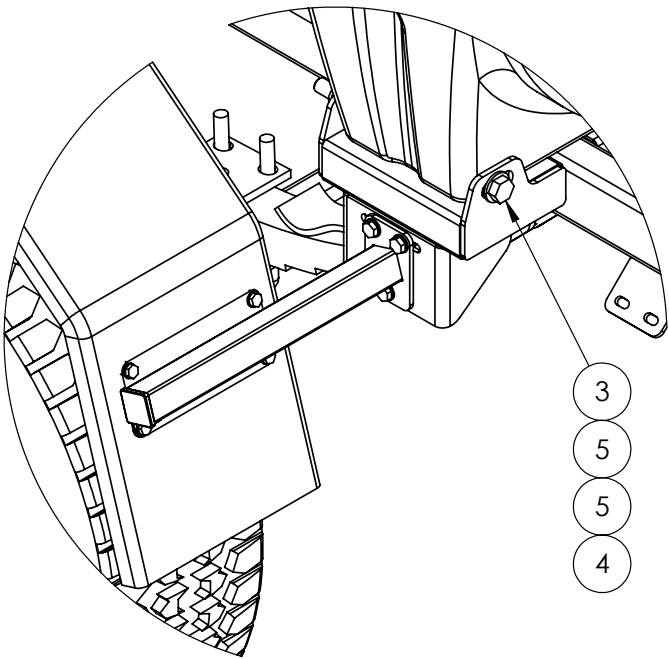
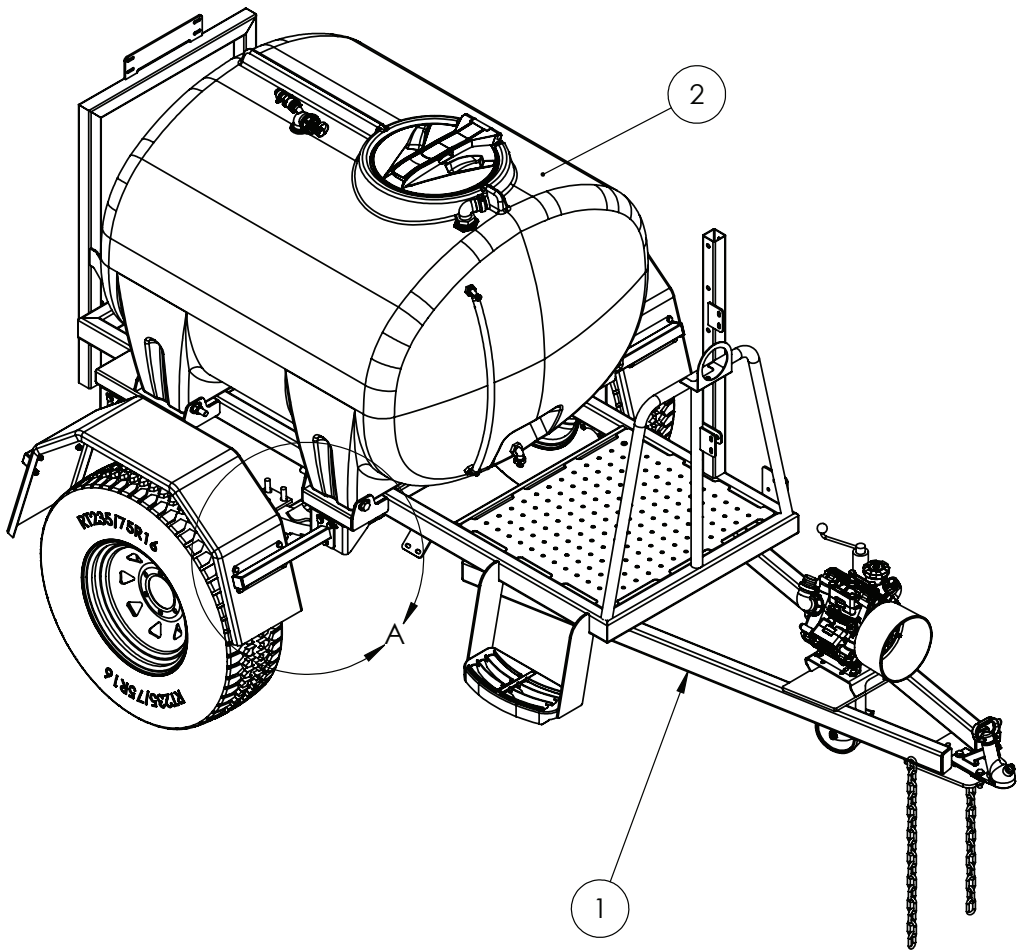
GA5078220


DIAPHRAGM PUMP, UDOR, ZETA 85 1C

REV

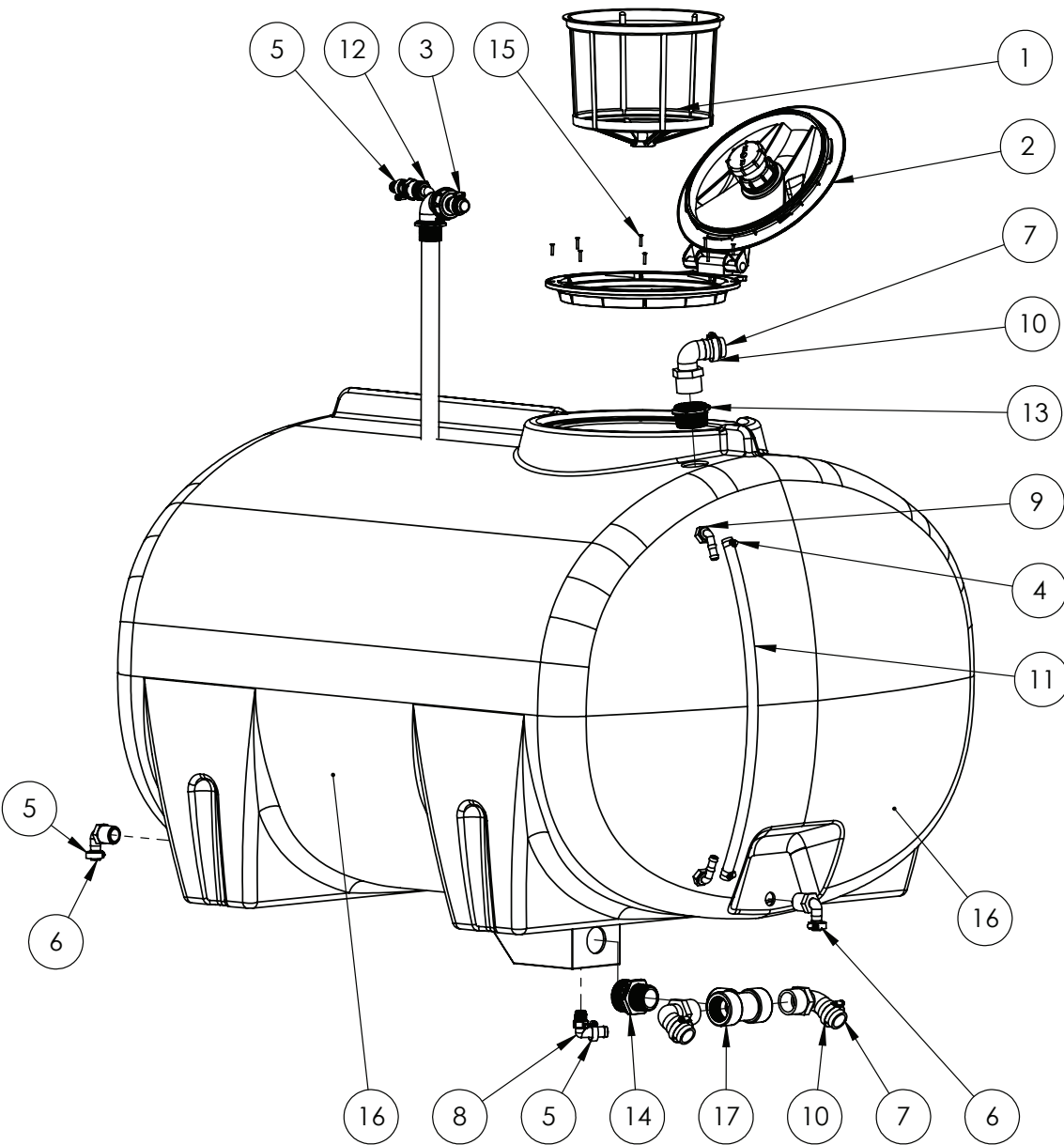


Main Tank Installation



IF DESCRIPTION PREFIX IS ASSEMBLY DRAWING ONLY OR PRODUCTION DRAWING ONLY THE ITEM IS NOT FOR SALE			
ITEM	PART NUMBER	DESCRIPTION	QTY
1	GA6500019-01	ASSEMBLY DRAWING ONLY, PRAIRIE COMPACT, 1000L, ROLLING CHASSIS	1
2	GA4907760	ASSEMBLY DRAWING ONLY, TANK, PRAIRIE COMPACT, 1000L	1
3	GA5050315	BOLT M16 X 260 GR8.8 ZP	4
4	GA5001029	NUT M16 NYLOC ZP	4
5	GA5001043	WASHER 16mm FLAT SS HD	8
GA6500019-02		ASSEMBLY DRAWING ONLY, PRAIRIE COMPACT, 1000L, STAGE 2	REV 00
 GOLDACRES			

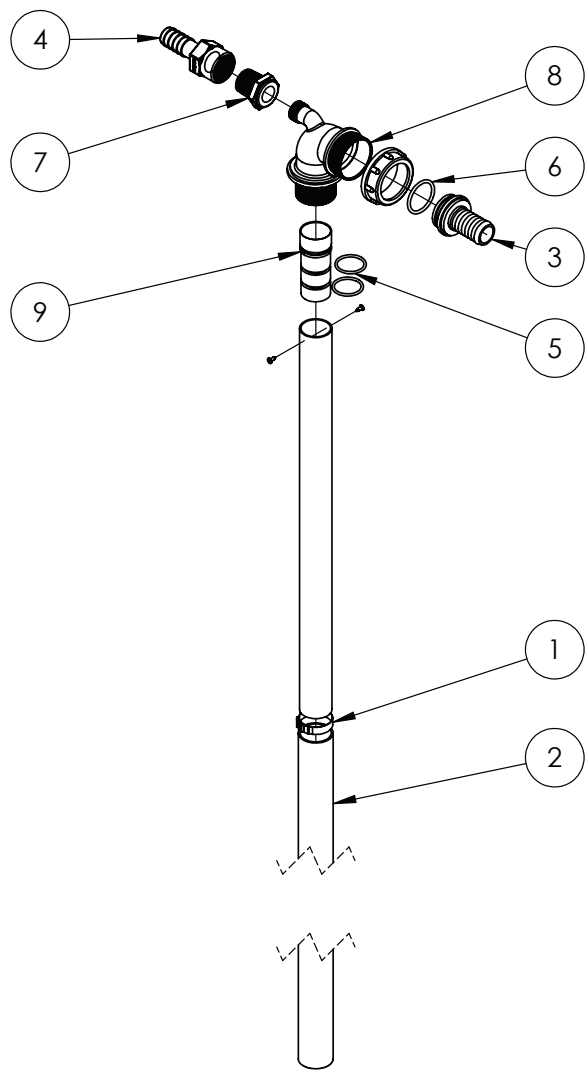
Main Tank Assembly



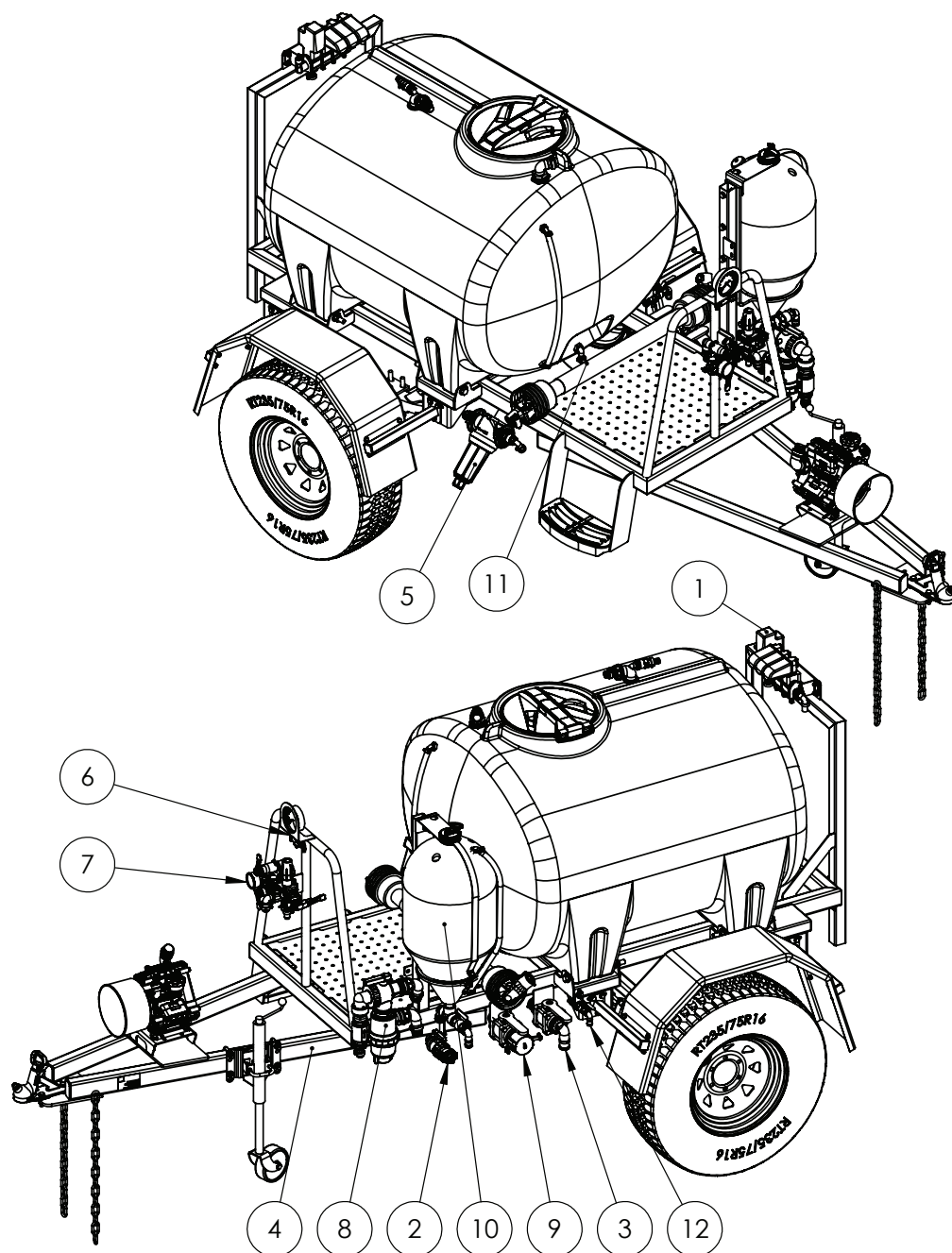
IF DESCRIPTION PREFIX IS ASSEMBLY DRAWING ONLY OR PRODUCTION DRAWING ONLY THE ITEM IS NOT FOR SALE			
ITEM	PART NUMBER	DESCRIPTION	QTY.
1	GA5076714	FILTER, BASKET TYPE, DIAMETER 305 X 245 DEEP, SUIT MAIN SPRAY TANK	1
2	GA5078336	HINGED LID D.355 FLAT SURFACE	1
3	GA5001681	HOSE CLAMP, 1" SS (20-32/12W)	1
4	GA5000469	HOSE CLAMP, 1/2" SS 12-20/9W3	2
5	GA5000999	HOSE CLAMP, 3/4" SS (16-27/12W)	4
6	GA5077719	HOSE BARB, ELBOW, 90 DEGREE, 1 MALE THREAD X 3/4 HOSE, BANJO	2
7	GA5077736	HOSE BARB, ELBOW, 90 DEGREE, 1 1/2" MALE THREAD X 1 1/2" HOSE, BANJO	3
8	GA5077704	HOSE BARB, ELBOW, 90 DEGREE, 1/2 MALE THREAD X 3/4 HOSE, BANJO	1
9	GA5077710	HOSE BARB, ELBOW, 90 DEGREE, 3/4 MALE THREAD X 1/2 HOSE, BANJO	2
10	GA5002873	HOSE CLAMP, 1 1/2" SS (32-50/12W)	3
11	GA2000209	HOSE, CLEAR, 12mm, SIGHT TUBE	0.7
12	GA4903086	PRE-ASSEMBLED VENTURI FILLER	1
13	GA5078023	REDUCING BUSH, 2 MALE THREAD X 1 1/2 FEMALE THREAD, BANJO	1
14	GA5078095	REDUCING NIPPLE, 2 THREAD X 1 1/2 THREAD, BANJO	1
15	GA5069815	SCREW CSK PHILLIPS M4 X 20 ZP	8
16	GA5022098	TANK 1000LT CARTAGE, GREEN, BARE	1
17	GA5078153	TEE, THREADED, 1 1/2 FEMALE X 1 1/2 FEMALE X 1 1/2 FEMALE, BANJO	1
GA4907760		ASSEMBLY DRAWING ONLY, TANK, PRAIRIE COMPACT, 1000L	REV 01



Venturi Filler

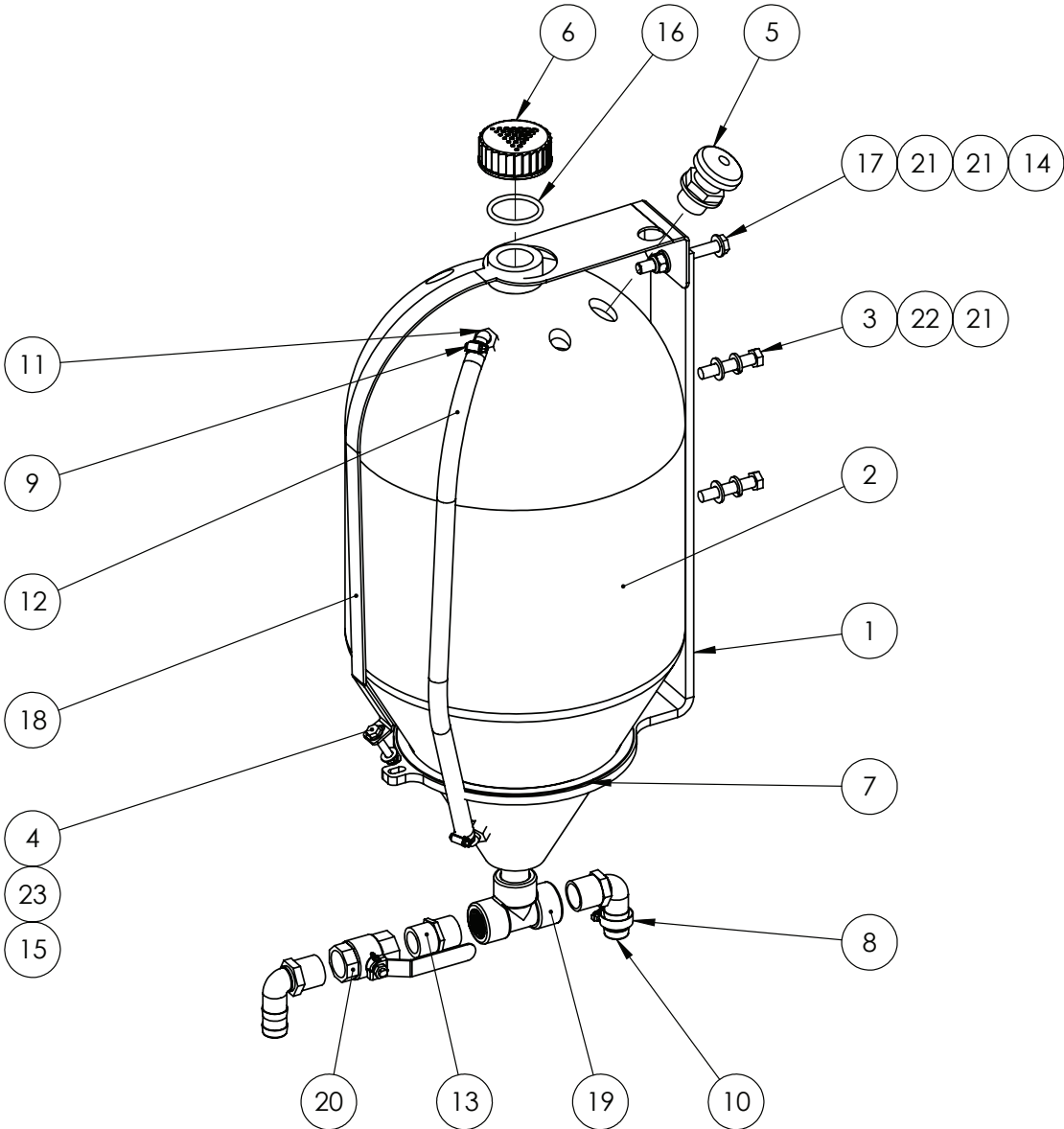


IF DESCRIPTION PREFIX IS ASSEMBLY DRAWING ONLY OR PRODUCTION DRAWING ONLY THE ITEM IS NOT FOR SALE			
ITEM	PART NUMBER	DESCRIPTION	QTY
1	GA5007235	HOSE CLAMP, COBRA TYPE, 1 1/2"	1
2	GA5050205	HOSE LAY FLAT BLUE - 32mm CUT 1000mm	1
3	GA5076036	HOSE BARB, STRAIGHT, 1 1/2" FLY NUT END X 1" HOSE BARB, UDOR	1
4	GA5077743	HOSE BARB, STRAIGHT, 3/4" FEMALE X 3/4" HOSE, BANJO	1
5	GA5049125	O RING, 23.4 X 3.53, BS213	2
6	GA5077679	O RING, 30 X 3 mm, G10061	1
7	GA5078010	REDUCING BUSH, 3/4 MALE THREAD X 1/2 FEMALE THREAD, BANJO	1
8	GA5077035	VENTURI, TOP OF TANK, 32 OD OUTLET, ARAG, NOT MODIFIED FOR GOLDARES TANKS	1
9	MACH0022	JET FOR ARAG VENTURI	1
GA4903086		PRE-ASSEMBLED VENTURI FILLER	REV 02



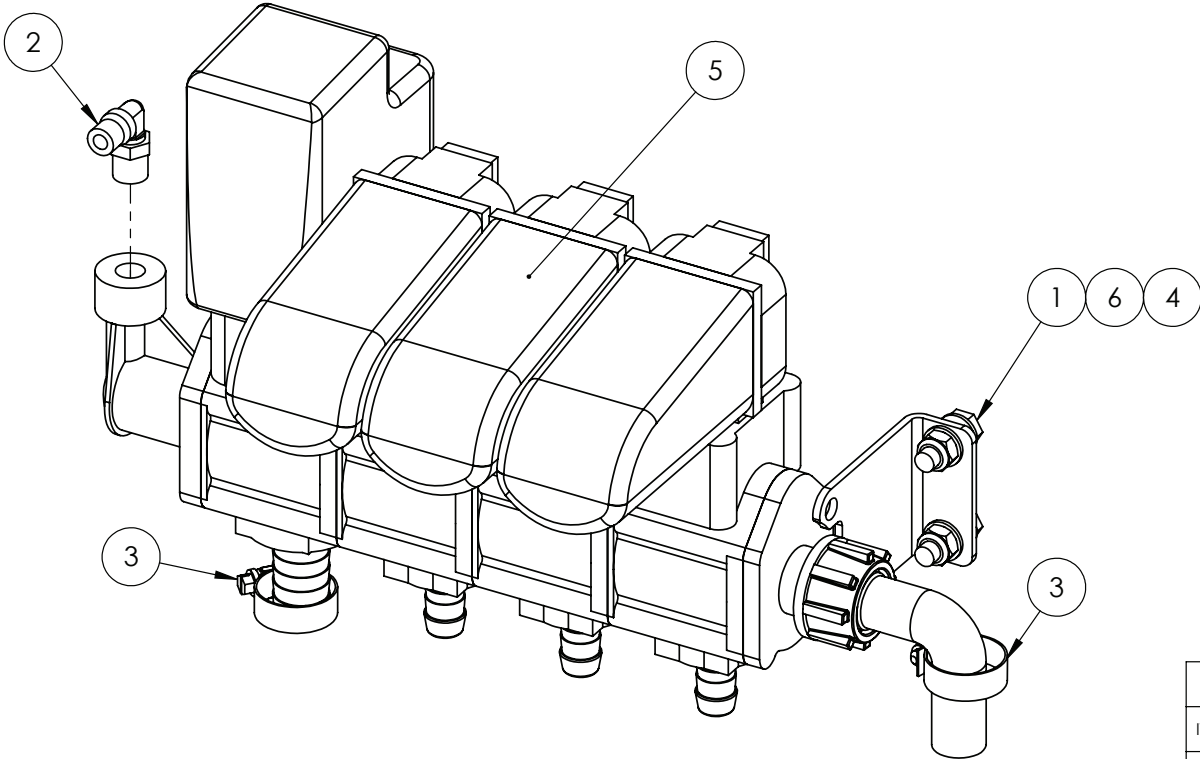
IF DESCRIPTION PREFIX IS ASSEMBLY DRAWING ONLY OR PRODUCTION DRAWING ONLY THE ITEM IS NOT FOR SALE			
ITEM	PART NUMBER	DESCRIPTION	QTY
1	GA4908870	ASSEMBLY DRAWING ONLY, 3 SECTION, BOOM VALVE	1
2	GA4908840	ASSEMBLY DRAWING ONLY, CHEM PROBE	1
3	GA4908850	ASSEMBLY DRAWING ONLY, MAIN TANK DRAIN	1
4	GA6500019-02	ASSEMBLY DRAWING ONLY, PRAIRIE COMPACT, 1000L, STAGE 2	1
5	GA4908825	ASSEMBLY DRAWING ONLY, PRESSURE FILTER	1
6	GA4908830	ASSEMBLY DRAWING ONLY, PRESSURE GAUGE	1
7	GA4908835	ASSEMBLY DRAWING ONLY, PRESSURE MANIFOLD	1
8	GA4908855	ASSEMBLY DRAWING ONLY, SUCTION FILTER	1
9	GA4908845	ASSEMBLY DRAWING ONLY, TANK FILL	1
10	GA4908865	ASSEMBLY DRAWING ONLY, TANK, 45L FLUSH WATER	1
11	GA4900714	PTO SHAFT, SERIES 2, 860 mm	1
12	GA4903097	PRE-ASSEMBLED SUMP DRAIN ALL MODELS	1
GA6500019 GOLDACRES			REV 00
PRAIRIE COMPACT, 1000L			


100

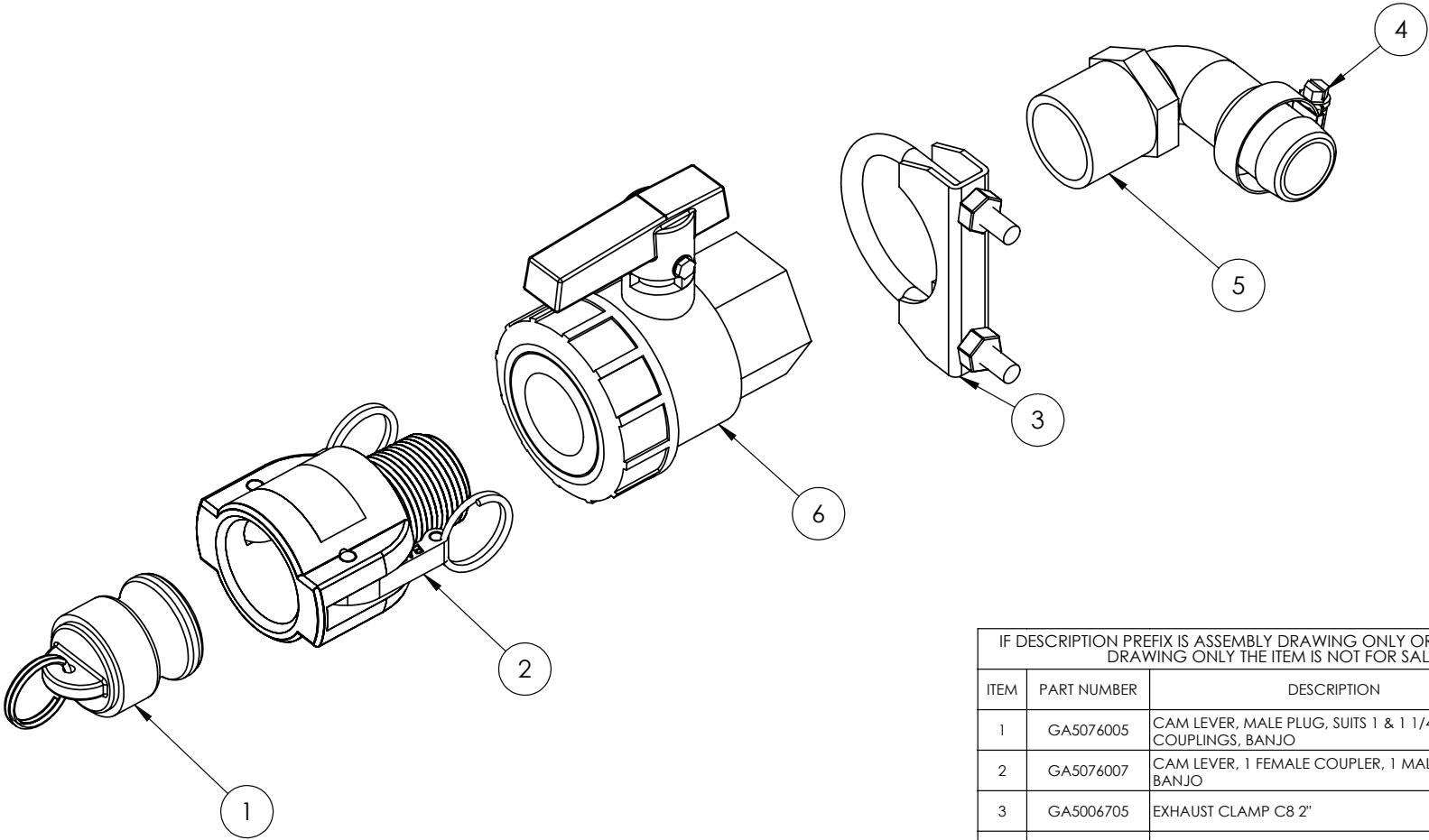



IF DESCRIPTION PREFIX IS ASSEMBLY DRAWING ONLY OR PRODUCTION DRAWING ONLY THE ITEM IS NOT FOR SALE			
ITEM	PART NUMBER	DESCRIPTION	QTY
1	F70608A	45L TRANSCAL TANK MOUNTING PLATE	1
2	GA4901047	45L TRANSCAL TANK	1
3	GA5000339	BOLT M12 X 65 GR8.8 ZP	2
4	GA5004727	BOLT M8 X 50 GR8.8 ZP	1
5	GA5077045	BREATHER VALVE, LABYRINTH TYPE, 1" MALE THREAD, ARAG	1
6	GA5075400	CAP, TANK, PLASTIC, LID, M65.5X8 THREAD, GOLDACRES LOGO	1
7	GA5010085	HOLLOW SECTION RECTANGULAR RUBBER (GA5010085) CUT 735mm	1
8	GA5001681	HOSE CLAMP, 1" SS (20-32/12W)	1
9	GA5000469	HOSE CLAMP, 1/2" SS 12-20/9W3	2
10	GA5077723	HOSE BARB, ELBOW, 90 DEGREE, 1" MALE X 1" HOSE, BANJO	2
11	GA5077708	HOSE BARB, ELBOW, 90 DEGREE, 1/2 MALE THREAD X 1/2 HOSE, BANJO, HB050-90	2
12	GA2000209	HOSE, CLEAR, 12mm, SIGHT TUBE	0.7
13	GA5077914	NIPPLE, SHORT, 1" MALE THREAD X 1" MALE THREAD, BANJO	1
14	GA5012461	NUT M12 NYLOC ZP	1
15	GA5004917	NUT M8 NYLOC ZP	1
16	GA5009187	O RING, 60 OD, 50 ID X 5mm, SUITS EXACTA TANK CAP	1
17	GA5000261	SET SCREW M12 X 100 GR8.8 ZP	1
18	F70623A	TRANSCAL BOTTLE STRAP BENT	1
19	GA5078151	TEE, THREADED, 1" FEMALE, BANJO	1
20	GA5018319	VALVE, BALL, 25mm, 1" FEMALE, LEVER HANDLE, BRASS	1
21	GA5000577	WASHER 12mm FLAT SS HD	4
22	GA5000575	WASHER 12mm SPRING SS	2
23	GA5003643	WASHER 8mm FLAT SS HD	2
GA4908865		ASSEMBLY DRAWING ONLY, TANK, 45L FLUSH WATER	REV 00

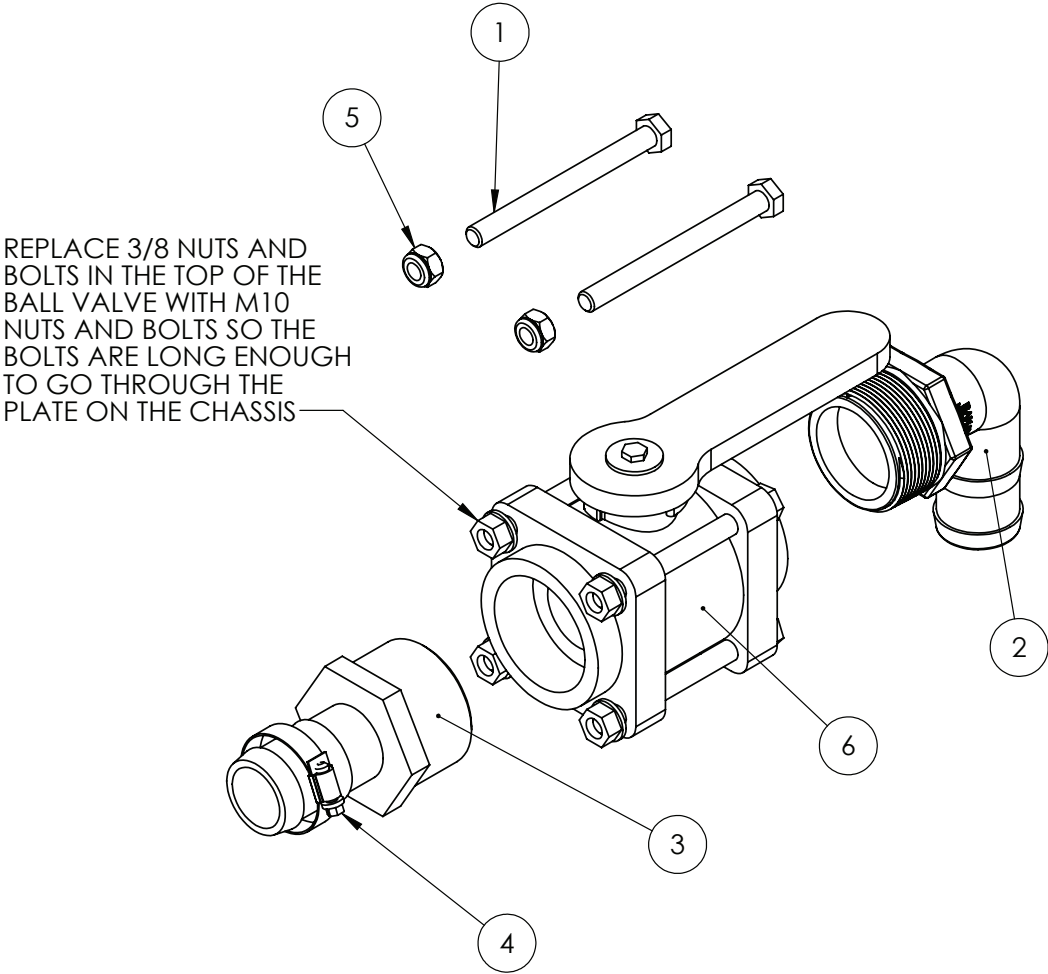
3 Section, Boom Valve




IF DESCRIPTION PREFIX IS ASSEMBLY DRAWING ONLY OR PRODUCTION DRAWING ONLY THE ITEM IS NOT FOR SALE			
ITEM	PART NUMBER	DESCRIPTION	QTY
1	GA5004711	BOLT M8 X 25 GR8.8 ZP	4
2	GA5078520	AIR FITTING, STRAIGHT, 3/8" TUBE, 1/2" NPT MALE, BRASS, ALKON - AQ68-DOT-6X8	1
3	GA5000999	HOSE CLAMP, 3/4" SS (16-27/12W)	2
4	GA5004917	NUT M8 NYLOC ZP	4
5	GA2000052	PRESSURE CONTROL VALVE, ELECTRIC, 3 WAY, GEOLINE	1
6	GA5003643	WASHER 8mm FLAT SS HD	8
GA4908870		ASSEMBLY DRAWING ONLY, 3 SECTION, BOOM VALVE	REV 00
			



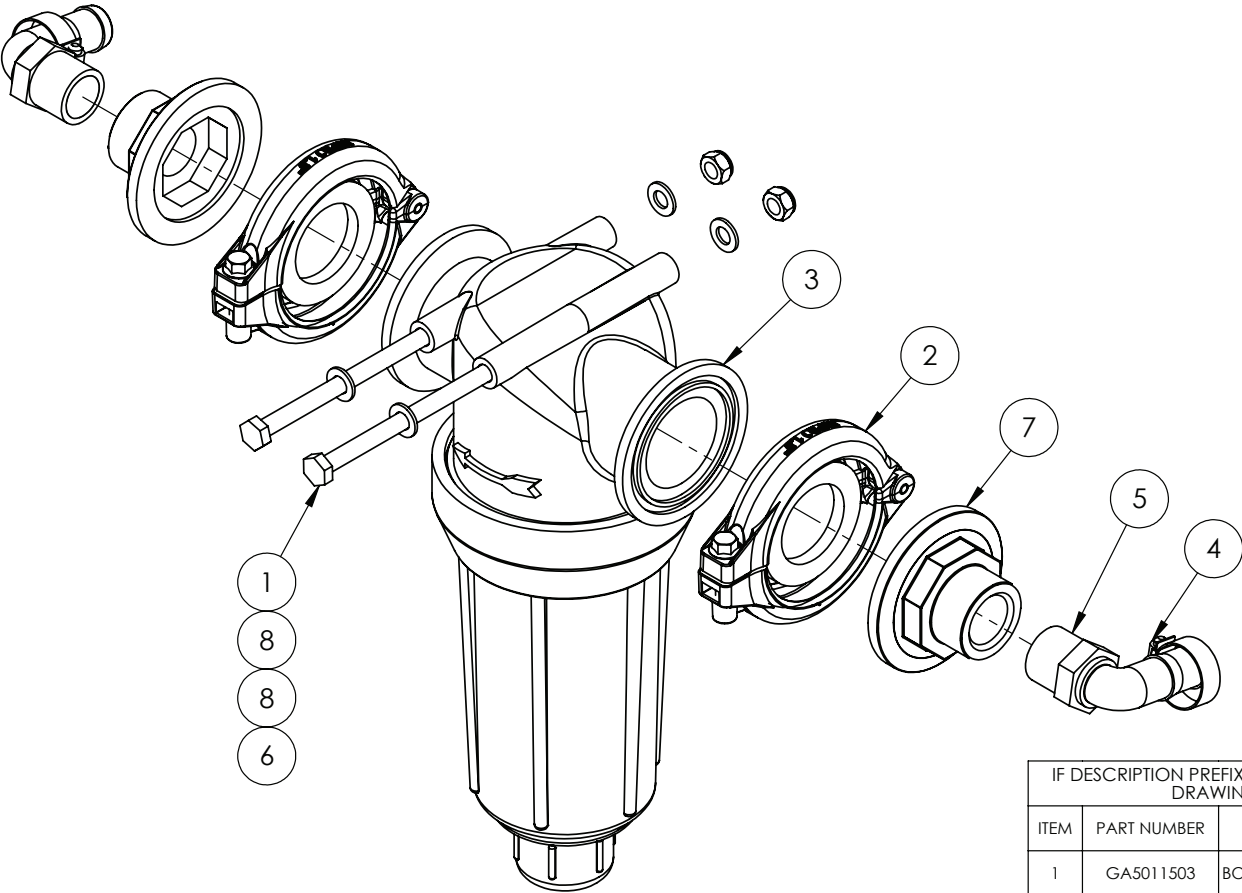
IF DESCRIPTION PREFIX IS ASSEMBLY DRAWING ONLY OR PRODUCTION DRAWING ONLY THE ITEM IS NOT FOR SALE			
ITEM	PART NUMBER	DESCRIPTION	QTY
1	GA5076005	CAM LEVER, MALE PLUG, SUITS 1 & 1 1/4 COUPLINGS, BANJO	1
2	GA5076007	CAM LEVER, 1 FEMALE COUPLER, 1 MALE THREAD, BANJO	1
3	GA5006705	EXHAUST CLAMP C8 2"	1
4	GA5001681	HOSE CLAMP, 1" SS (20-32/12W)	1
5	GA5077723	HOSE BARB, ELBOW, 90 DEGREE, 1" MALE X 1" HOSE, BANJO	1
6	GA5078164	VALVE, BALL, 1 FEMALE THREAD INLET / OUTLET, FULL PORT, LEVER HANDLE, BANJO	1
GA4908840  GOLDACRES			REV 00



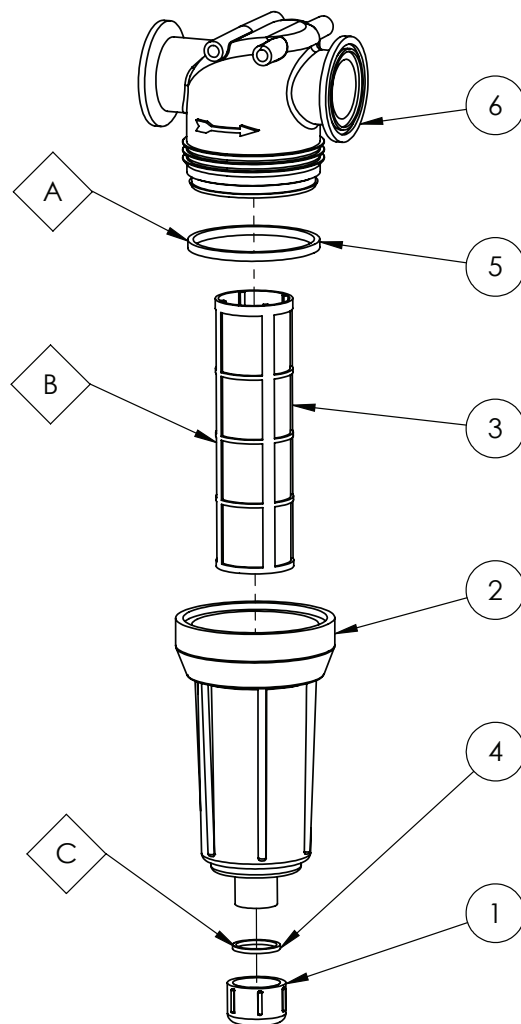
IF DESCRIPTION PREFIX IS ASSEMBLY DRAWING ONLY OR PRODUCTION DRAWING ONLY THE ITEM IS NOT FOR SALE			
ITEM	PART NUMBER	DESCRIPTION	QTY.
1	GA5011141	BOLT M10 X 110 GR8.8 ZP	2
2	GA5077738	HOSE BARB, ELBOW, 90 DEGREE, 2" MALE THREAD X 1 1/2" HOSE, BANJO, HB200/150-90	1
3	GA5077739	HOSE BARB, STRAIGHT, 2" MALE THREAD X 1 1/2" HOSE, BANJO, HB200-150	1
4	GA5002873	HOSE CLAMP, 1 1/2" SS (32-50/12W)	1
5	GA5000141	NUT M10 NYLOC ZP	2
6	GA5078188	VALVE, BOLTED, 2" FEMALE THREAD INLET / OUTLET, LEVER HANDLE, BANJO, V200	1
GA4908850		ASSEMBLY DRAWING ONLY, MAIN TANK DRAIN	REV 00
			



Pressure Filter



IF DESCRIPTION PREFIX IS ASSEMBLY DRAWING ONLY OR PRODUCTION DRAWING ONLY THE ITEM IS NOT FOR SALE			
ITEM	PART NUMBER	DESCRIPTION	QTY
1	GA5011503	BOLT M8 X 140 GR8.8 ZP	2
2	GA2000114	FLANGE CLAMP, AND GASKET, 1.5", SERIES 200, HYPRO	2
3	GA5077284	FLANGE FILTER WITH 100 MESH SCREEN	1
4	GA5000999	HOSE CLAMP, 3/4" SS (16-27/12W)	2
5	GA5077717	HOSE BARB, ELBOW, 90 DEGREE, 3/4" MALE THREAD X 3/4" HOSE	2
6	GA5004917	NUT M8 NYLOC ZP	2
7	GA5077852	PLUMBING ADAPTOR, 2 FLANGE X 3/4 FEMALE THREAD, BANJO, M200PLG075	2
8	GA5003643	WASHER 8mm FLAT SS HD	4
GA4908825		ASSEMBLY DRAWING ONLY, PRESSURE FILTER	REV 00



OPTIONAL PARTS			
ITEM	PART NUMBER	DESCRIPTION	QTY
A	GA5077542	SEAL, 98 OD X 91 ID X 7 THICK, VITON	1
B	GA5077391	FILTER SCREEN, 16 MESH, SS & POLYPROPYLENE, DIA 58mm X LENGTH 200mm.	1
B	GA5077392	FILTER SCREEN, 30 MESH, SS & POLYPROPYLENE, DIA 58mm X LENGTH 200mm	1
B	GA5077393	FILTER SCREEN, 50 MESH, SS & POLYPROPYLENE, DIA 58mm X LENGTH 200mm	1
B	GA5077394	FILTER SCREEN, 80 MESH, SS & POLYPROPYLENE, DIA 58mm X LENGTH 200mm.	1
B	GA5077396	FILTER SCREEN, 120 MESH, SS & POLYPROPYLENE, DIA 58mm X LENGTH 200mm.	1
C	GA5077565	SEAL, VITON, BOTTOM CAP	1



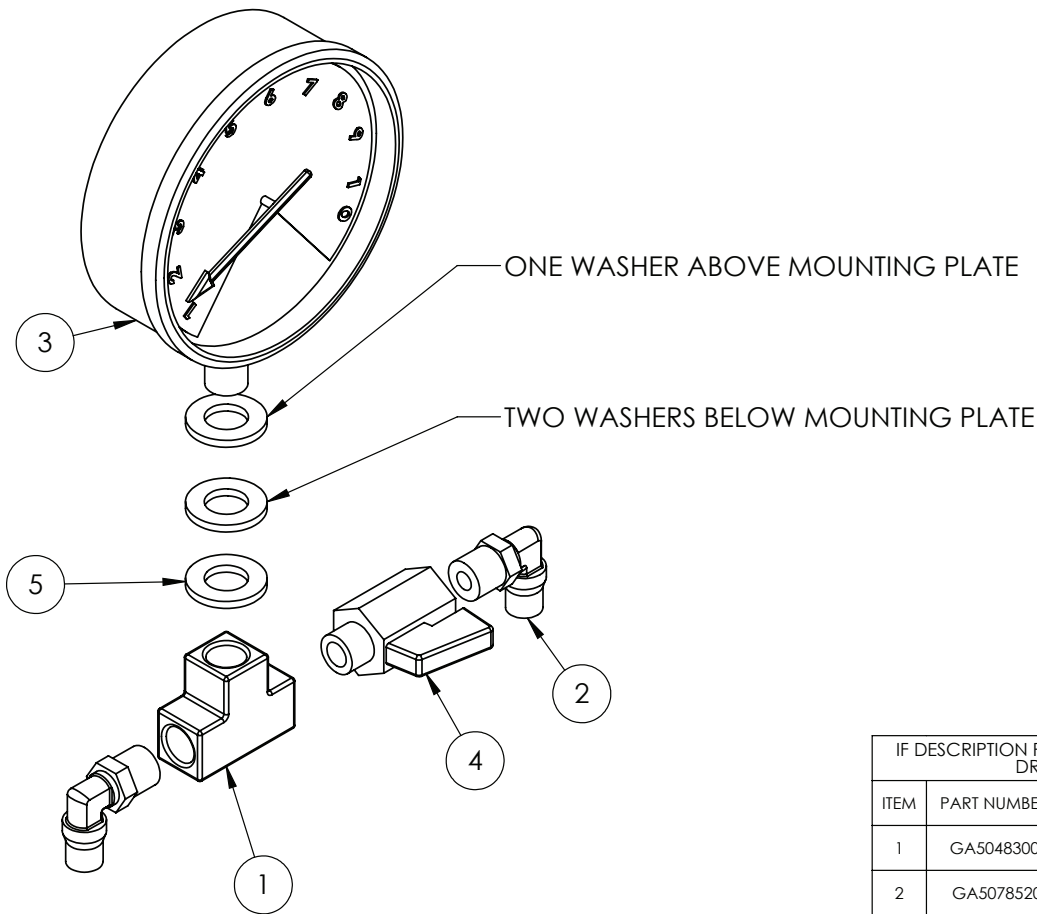
GA4522610
Tool, Teejet pressure filter cap removal

IF DESCRIPTION PREFIX IS ASSEMBLY DRAWING ONLY OR PRODUCTION DRAWING ONLY THE ITEM IS NOT FOR SALE			
ITEM	PART NUMBER	DESCRIPTION	QTY
1	GA5077540	FILTER BOWL CAP, AA126, POLYPROPYLENE, TEEJET, CP48655-PP	1
2	GA5077539	FILTER BOWL, AA126, SUITS 1 1/2 + 1 1/4, POLYPROPYLENE, TEEJET, CP48654-PP	1
3	GA5077395	FILTER SCREEN, 100 MESH, SS & POLYPROPYLENE, SUITS TEEJET 1 1/4, 1 1/2 & 75 SERIES FLANGE FILTERS. DIA 58mm X LENGTH 200mm.	1
4	GA5077564	SEAL, EPDM, SUIT AA126ML 5 & 6 FILTER BOTTOM CAP, CP63150-EPR	1
5	GA5077541	SEAL, 98 OD X 91 ID X 7 THICK, SUITS AA126ML-5 OR -6 FILTERS, EPDM, TEEJET, CP48656-EPR	1
6	GA5078386	STRAINER HEAD, 1 1/2" INLET/OUTLETS BSPT, CPB63066-1-1/2-PP	1
GA5077284		FILTER, 75 SERIES FLANGE INLET & OUTLET, 100 MESH, TEEJET, AAB126ML-F75-100	REV

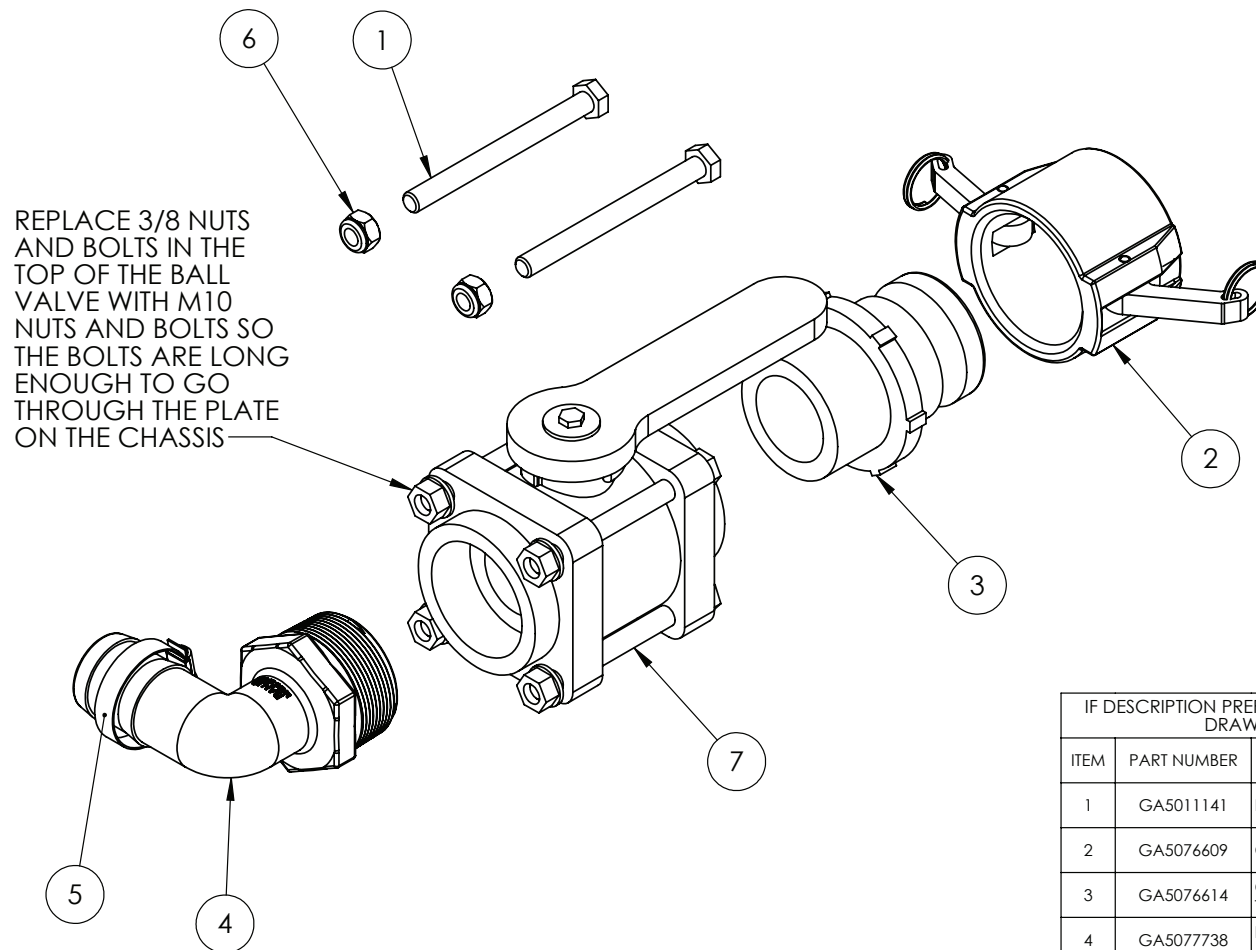




Pressure Gauge



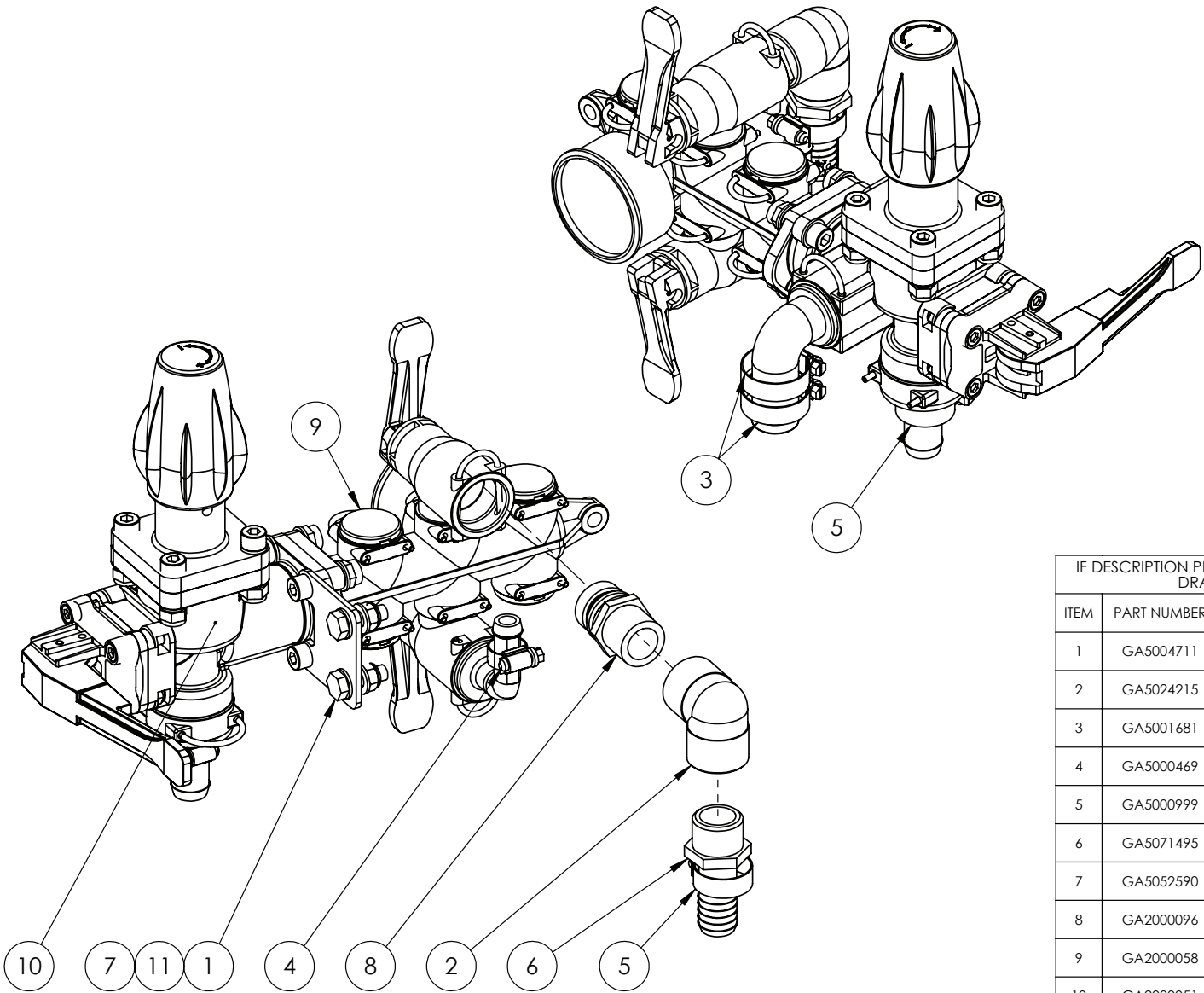
IF DESCRIPTION PREFIX IS ASSEMBLY DRAWING ONLY OR PRODUCTION DRAWING ONLY THE ITEM IS NOT FOR SALE			
ITEM	PART NUMBER	DESCRIPTION	QTY
1	GA5048300	1/4 FEMALE BRASS TEE	1
2	GA5078520	AIR FITTING, STRAIGHT, 3/8" TUBE, 1/2" NPT MALE, BRASS, ALKON - AQ68-DOT-6X8	2
3	GA4948460	PRESSURE GAUGE LARGE FACE 160PSI	1
4	GA5018323	VALVE, BALL, 1/4 MALE, FEMALE, BLACK LEVER HANDLE, CHROMED	1
5	GA5000577	WASHER 12mm FLAT SS HD	3
GA4908830		ASSEMBLY DRAWING ONLY, PRESSURE GAUGE	REV 00



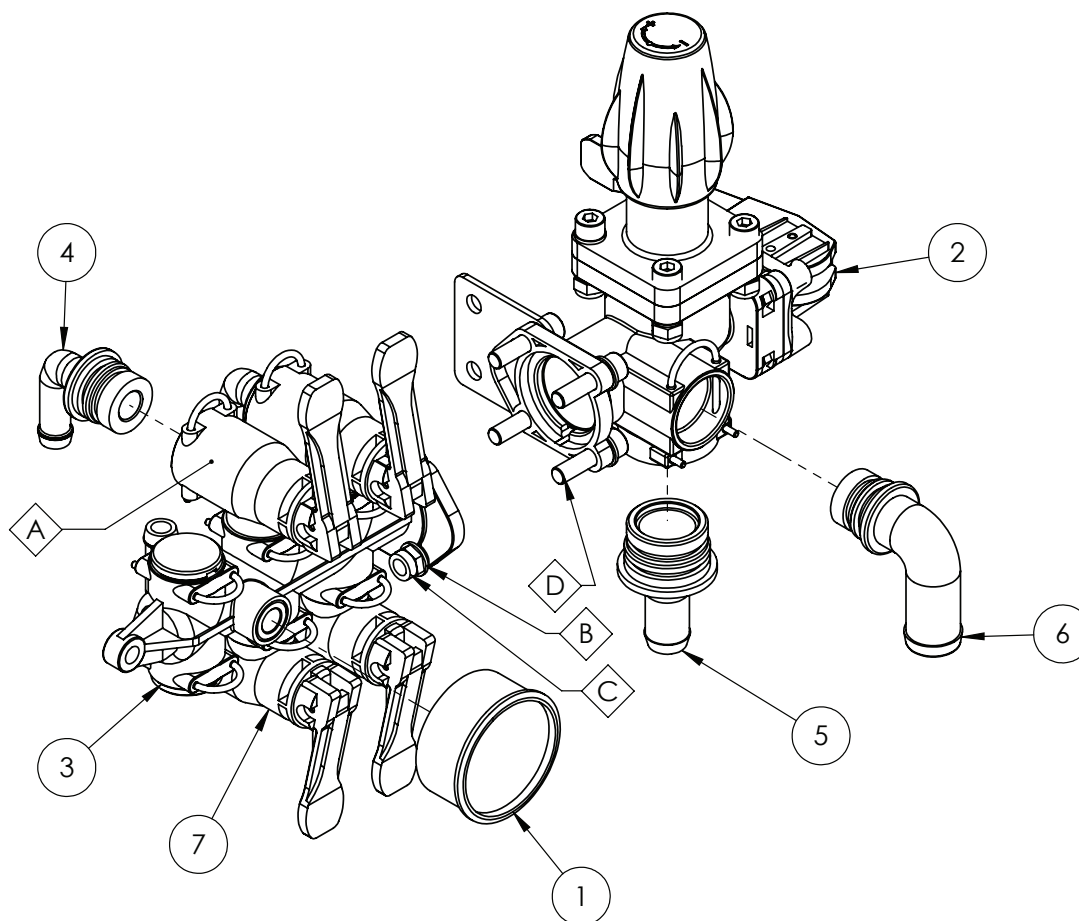
IF DESCRIPTION PREFIX IS ASSEMBLY DRAWING ONLY OR PRODUCTION DRAWING ONLY THE ITEM IS NOT FOR SALE			
ITEM	PART NUMBER	DESCRIPTION	QTY.
1	GA5011141	BOLT M10 X 110 GR8.8 ZP	2
2	GA5076609	CAM LEVER, 2 FEMALE CAP, BANJO	1
3	GA5076614	CAM LEVER, 2" MALE COUPLING X 2" MALE THREAD, BANJO	1
4	GA5077738	HOSE BARB, ELBOW, 90 DEGREE, 2" MALE THREAD X 1 1/2" HOSE, BANJO, HB200/150-90	1
5	GA5002873	HOSE CLAMP, 1 1/2" SS (32-50/12W)	1
6	GA5000141	NUT M10 NYLOC ZP	2
7	GA5078188	VALVE, BOLTED, 2" FEMALE THREAD INLET / OUTLET, LEVER HANDLE, BANJO, V200	1
GA4908845 GOLDACRES			REV 00
ASSEMBLY DRAWING ONLY, TANK FILL			



Pressure Manifold



IF DESCRIPTION PREFIX IS ASSEMBLY DRAWING ONLY OR PRODUCTION DRAWING ONLY THE ITEM IS NOT FOR SALE			
ITEM	PART NUMBER	DESCRIPTION	QTY
1	GA5004711	BOLT M8 X 25 GR8.8 ZP	2
2	GA5024215	ELBOW, BRASS, 3/4" FEMALE X 3/4" FEMALE BSPT	1
3	GA5001681	HOSE CLAMP, 1" SS (20-32/12W)	2
4	GA5000469	HOSE CLAMP, 1/2" SS 12-20/9W3	1
5	GA5000999	HOSE CLAMP, 3/4" SS (16-27/12W)	2
6	GA5071495	HOSE BARB BRASS, STRAIGHT, 3/4" MALE THREAD X 3/4" HOSE BARB	1
7	GA5052590	NUT M8 NYLOC SS	2
8	GA2000096	PLUMBING FITTING, HOSE BARB TO PTG OUTLET, 3/4, BRASS, GEOLINE	1
9	GA2000058	PLUMBING FITTING, PLUG, GEOLINE	2
10	GA2000051	PRESSURE CONTROL VALVE, MANUAL, CONSTANT, 4 WAY, GEOLINE	1
11	GA5003643	WASHER 8mm FLAT SS HD	4
GA4908835		ASSEMBLY DRAWING ONLY, PRESSURE MANIFOLD	REV 00

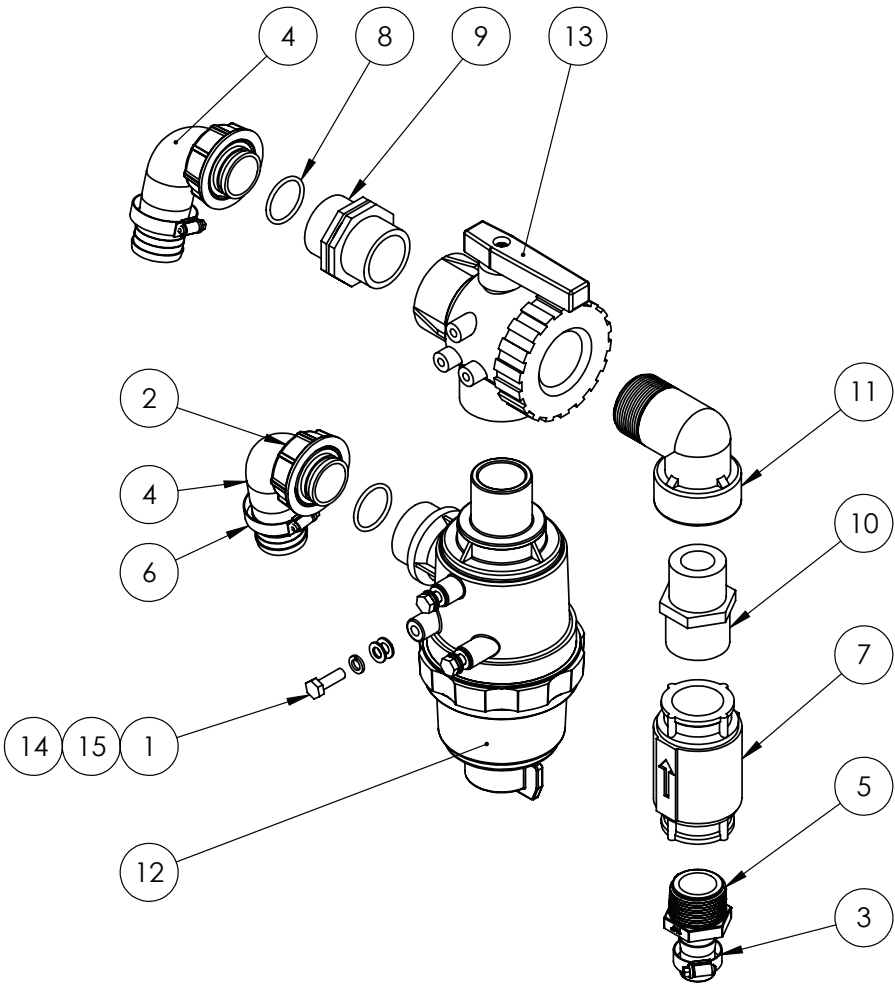


REPLACEMENT PARTS			
ITEM	PART NUMBER	DESCRIPTION	QTY
A	GA2000087	MODULAR SECTION VALVE, GEOLINE, SUITS GEOLINE MANIFOLD GA2000086 AND GA2000051	4
B	GA5003643	WASHER 8mm FLAT SS HD	6
C	GA5004917	NUT M8 NYLOC ZP	4
D	GA5070765	SHCS M8 X 30 GR12.9 ZP	4

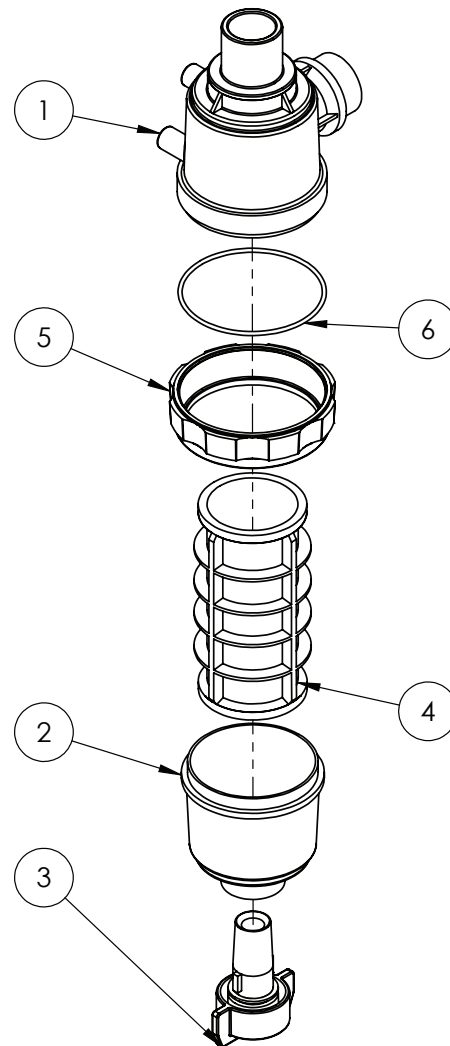
IF DESCRIPTION PREFIX IS ASSEMBLY DRAWING ONLY OR PRODUCTION DRAWING ONLY THE ITEM IS NOT FOR SALE			
ITEM	PART NUMBER	DESCRIPTION	QTY
1	GA2000075	GAUGE PRESSURE, REAR MOUNT, 25 BAR, 1/4", COLOURED SCALE, GEOLINE, 8302200.	1
2	GA2000085	MAIN MANUAL CONTROL VALVE, ADJUSTABLE PRESURE RELIEF, GEOLINE	1
3	GA2000086	PLUMBING MANIFOLD, 4-6 SECTIONS, GEOLINE	1
4	GA2000056	PLUMBING FITTING, HOSE BARB 13mm, ELBOW, WITH ORING, OUTLET, GEOLINE	4
5	GA2000054	PLUMBING FITTING, HOSE BARB 19mm, WITH ORING, BYPASS, GEOLINE	1
6	GA2000060	PLUMBING FITTING, HOSE BARB 25mm, ELBOW, WITH ORING,	1
7	GA2000087	MODULAR SECTION VALVE, GEOLINE, SUITS GEOLINE MANIFOLD GA2000086 AND GA2000051	4
GA2000051		PRESSURE CONTROL VALVE, MANUAL, CONSTANT, 4 WAY, GEOLINE	REV 00




Suction Filter



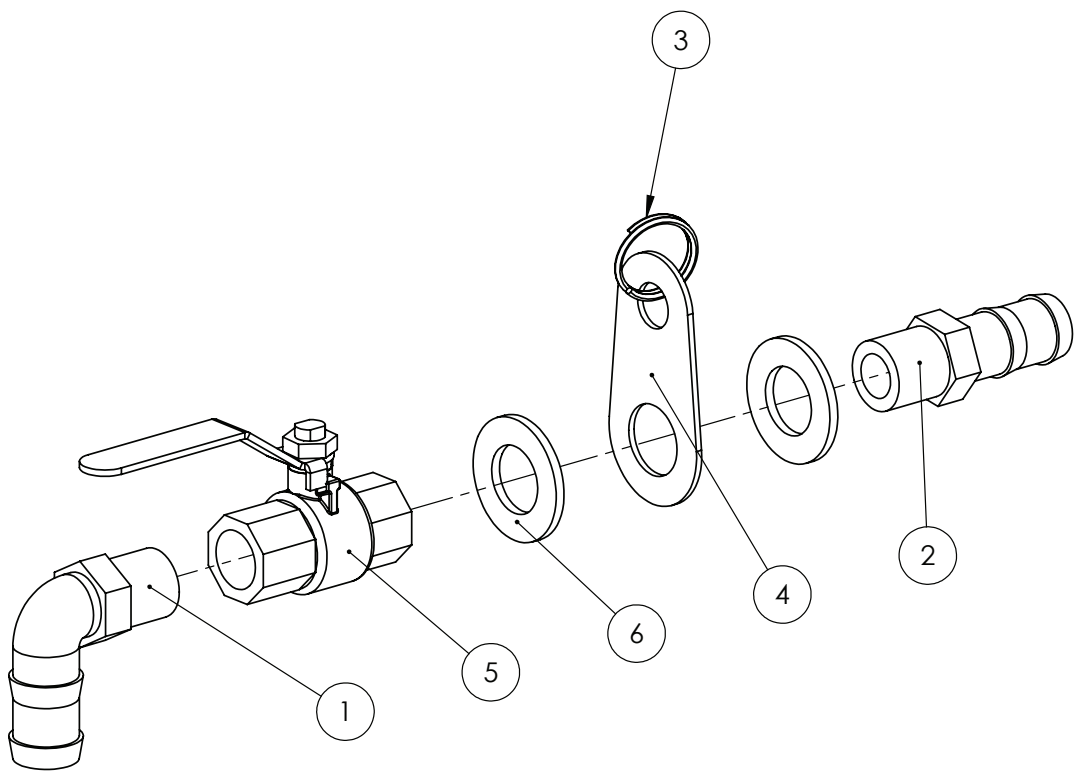
IF DESCRIPTION PREFIX IS ASSEMBLY DRAWING ONLY OR PRODUCTION DRAWING ONLY THE ITEM IS NOT FOR SALE			
ITEM	PART NUMBER	DESCRIPTION	QTY
1	GA5004711	BOLT M8 X 25 GR8.8 ZP	3
2	GA5076604	FLY NUT, 1 1/2", ARAG, 2002060	2
3	GA5001681	HOSE CLAMP, 1" SS (20-32/12W)	1
4	GA5076260	HOSE BARB, ELBOW, 90 DEGREE, 1 1/2 FLY NUT END X 40mm HOSE	2
5	GA5077728	HOSE BARB, STRAIGHT, 1 1/4" MALE THREAD X 1" HOSE, BANJO	1
6	GA5002873	HOSE CLAMP, 1 1/2" SS (32-50/12W)	2
7	GA5017361	NON RETURN VALVE 1-1/4"	1
8	GA5077679	O RING, 30 X 3 mm, G10061	2
9	GA5078409	PLUMBING FITTING, NIPPLE, 1 1/2", ARAG, 2502060	1
10	GA5078093	REDUCING NIPPLE, 1 1/2 MALE THREAD X 1 1/4 MALE THREAD, BANJO	1
11	GA5078140	STREET ELBOW, 90 DEGREE, 1 1/2 FEMALE THREAD X 1 1/2 MALE THREAD, BANJO	1
12	GA2000106	SUCTION FILTER, 1-1/2" 50 MESH, 1-1/2" BSP MALE THREADS, GEOLINE	1
13	GA5076985	VALVE, BALL, 3 WAY, 1 1/2 FEMALE THREAD INLET / OUTLET, ARAG	1
14	GA5003643	WASHER 8mm FLAT SS HD	6
15	GA5004919	WASHER 8mm SPRING SS	3
GA4908855		ASSEMBLY DRAWING ONLY, SUCTION FILTER	REV 00




IF DESCRIPTION PREFIX IS ASSEMBLY DRAWING ONLY OR PRODUCTION DRAWING ONLY THE ITEM IS NOT FOR SALE			
ITEM	PART NUMBER	DESCRIPTION	QTY
1	C00002018	BODY, SUCTION FILTER, 1 1/2", GEOLINE, C00002018	1
2	C00201009	BOWL, SUCTION FILTER, 1 1/2", GEOLINE, C00201009	1
3	K00100001	DRAIN PLUG, SUCTION FILTER, 1 1/2", GEOLINE, K00100001	1
4	GA5024295	FILTER SCREEN, 50 MESH, DIA 79 X 167 mm LENGTH, SUIT GEOLINE FILTER GA2000106, O-RINGS GA5024290 ARE NOT INCLUDED. GEOLINE, C00100012	1
5	GA5024285	NUT, SUCTION FILTER, 1 1/2", GEOLINE, G00101002	1
6	GA5024275	O-RING, 5.34 X 94.62 mm, SUCTION FILTER, 1 1/2", SUITS GA2000106, GEOLINE, G00001062	1
GA2000106		SUCTION FILTER, 1-1/2" 50 MESH, 1-1/2" BSP MALE THREADS, GEOLINE	REV 00
			

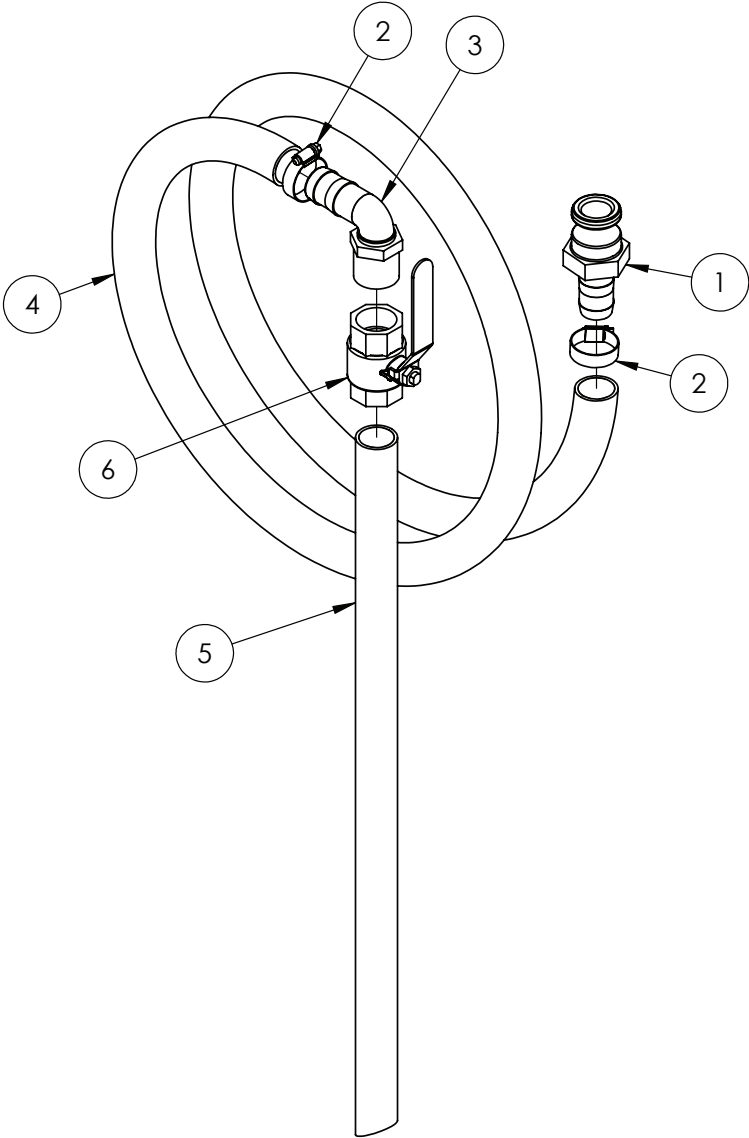



Sump Drain



IF DESCRIPTION PREFIX IS ASSEMBLY DRAWING ONLY OR PRODUCTION DRAWING ONLY THE ITEM IS NOT FOR SALE			
ITEM	PART NUMBER	DESCRIPTION	QTY
1	GA5077704	HOSE BARB, ELBOW, 90 DEGREE, 1/2 MALE THREAD X 3/4 HOSE, BANJO	1
2	GA5077707	HOSE BARB, 1/2 MALE THREAD X 3/4 HOSE, BANJO	1
3	GA5002077	KEY RING, 25mm, SS	1
4	F70565A	SUMP DRAIN MOUNTING PLATE	1
5	GA5018309	VALVE, BALL, 12mm, 1/2" FEMALE, LEVER HANDLE, BRASS	1
6	GA5001741	WASHER 20mm FLAT SS HD	2
GA4903097  GOLDACRES			PRE-ASSEMBLED SUMP DRAIN ALL MODELS REV

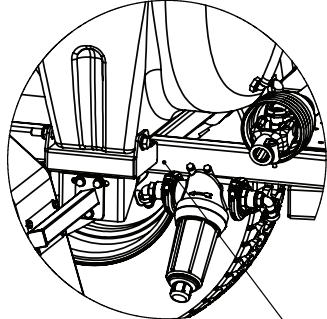
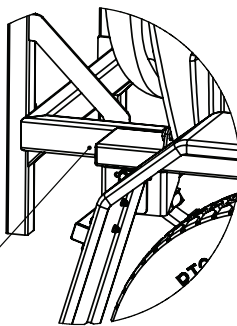
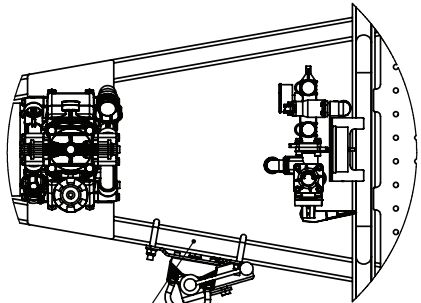
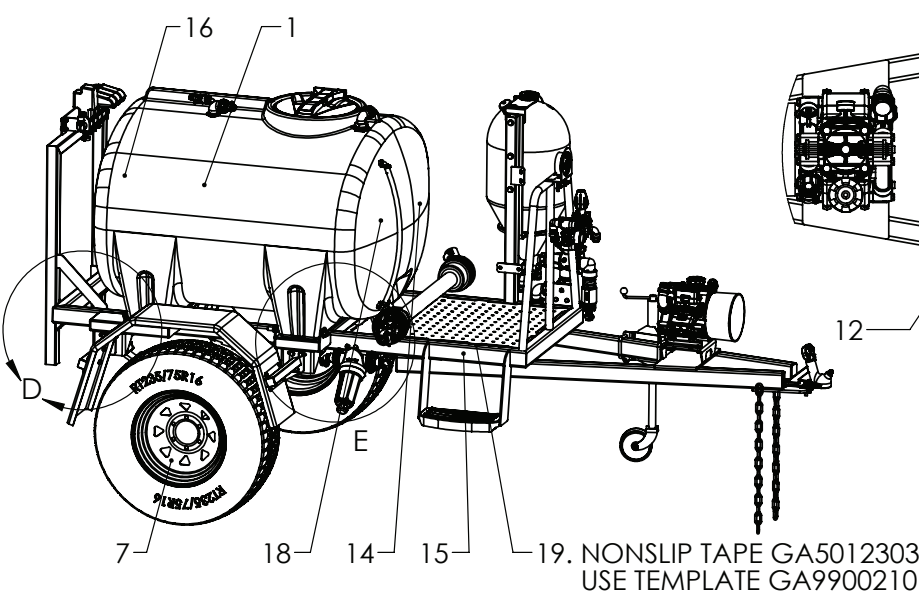
Chemical Suction Probe



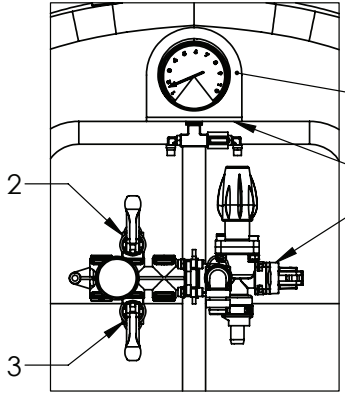
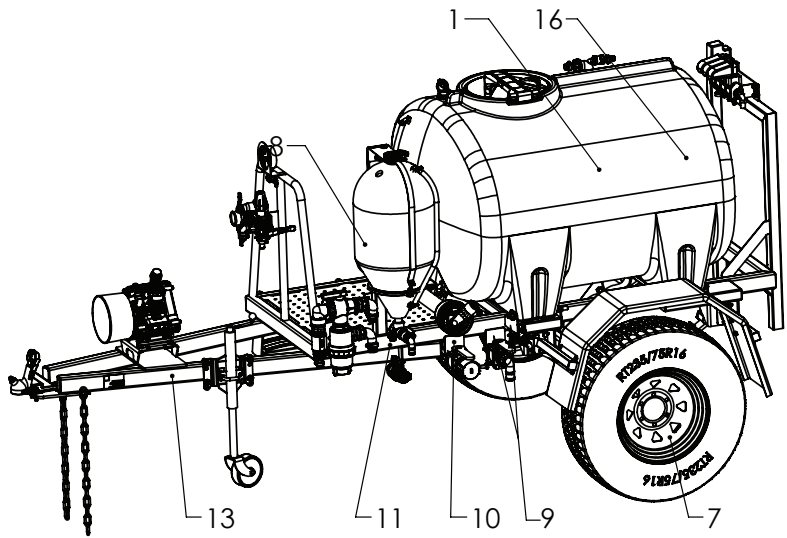
IF DESCRIPTION PREFIX IS ASSEMBLY DRAWING ONLY OR PRODUCTION DRAWING ONLY THE ITEM IS NOT FOR SALE			
ITEM	PART NUMBER	DESCRIPTION	QTY
1	GA5076011	CAM LEVER, 1 MALE COUPLING X 1 HOSE BARB, BANJO	1
2	GA5001681	HOSE CLAMP, 1" SS (20-32/12W)	2
3	GA5077723	HOSE BARB, ELBOW, 90 DEGREE, 1" MALE X 1" HOSE, BANJO	1
4	GA2000220	PVC HOSE 25mm CUT 3.2M	1
5	GA5013603	POLY PIPE 25mm CUT 630mm	1
6	GA5018319	VALVE, BALL, 25mm, 1" FEMALE, LEVER HANDLE, BRASS	1
GA4948250		PRE ASSEMBLED CHEMICAL DRUM PROBE	REV 01
			



Decals



17. SPRING LINKAGE BOTH SIDES
17. SPRING PIVOT BOTH SIDES

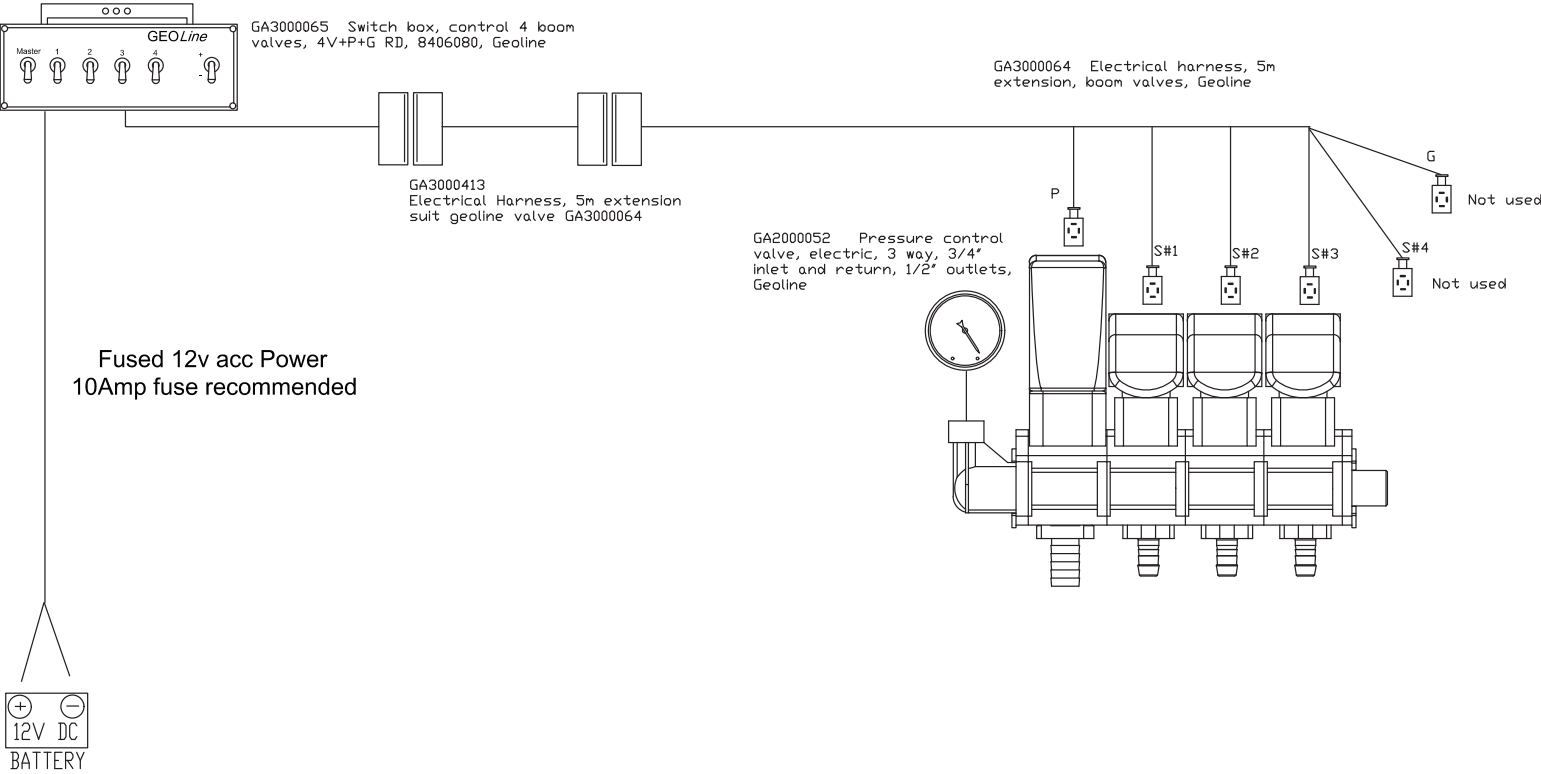


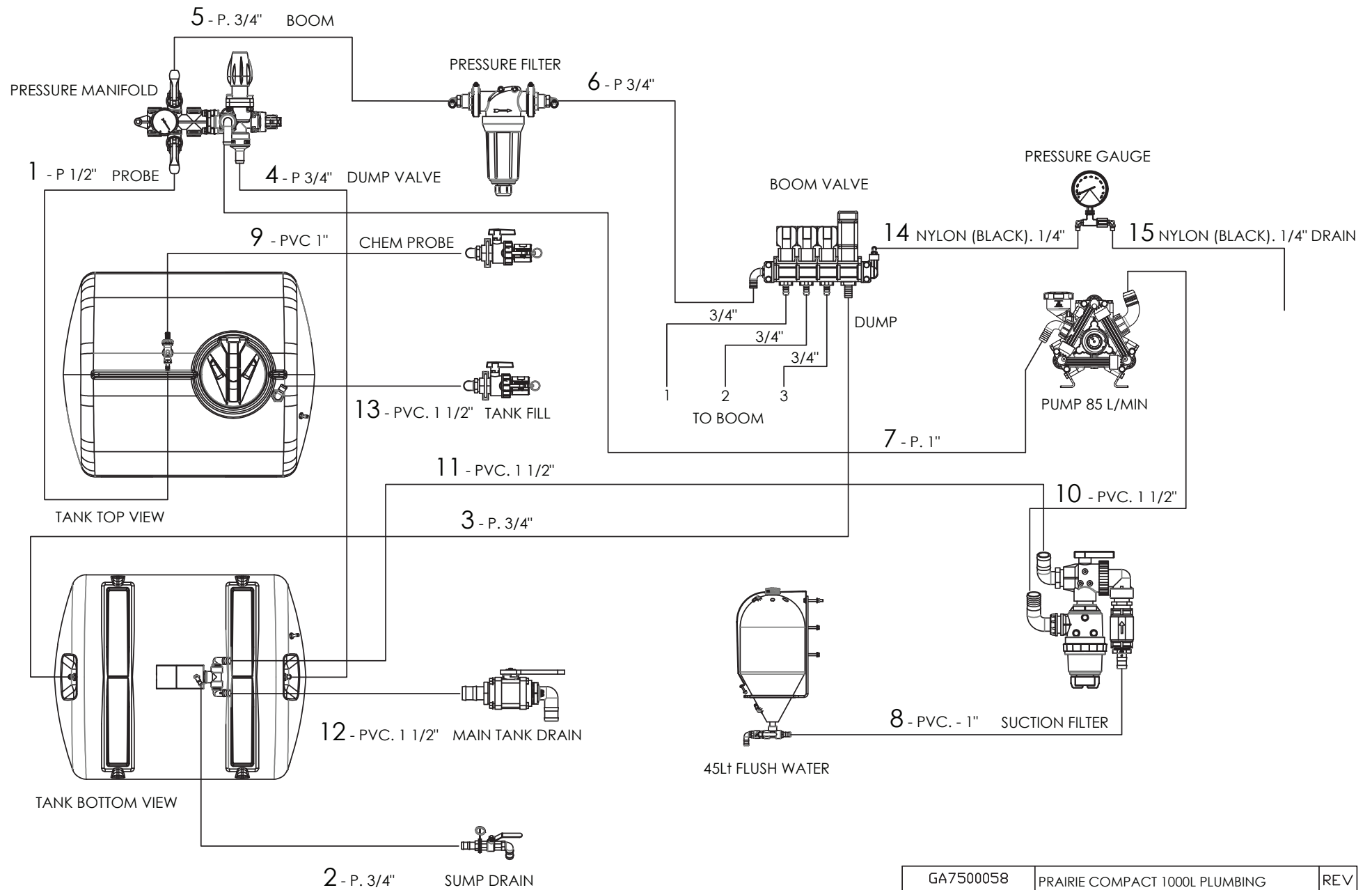
GA8701067 - DECAL, PRAIRIE COMPACT, 1000L		
ITEM	PART NUMBER / DESCRIPTION	
1	GA8700848 - TANK DECAL	
2	GA8701007 - BOOM	
3	GA8700468 - PROBE	
4	GA8700470 - DUMP VALVE	
5	GA8700660 - SPRAY PRESSURE DRAIN VALVE	
6	GA8700484 - SPRAY PRESSURE	
7	GA5017555 - WARNING, CHECK WHEEL NUTS	
8	GA8700532 - FLUSH WATER ONLY	
9	GA8700483 - DRAIN ONLY	
10	GA8700457 - FILL	
11	GA8700456 - PROBE	
12	GA5017559 - WARNING, JACK	
13	GA5060730 - NOT FOR ROAD USE	
14	GA8700172 - WARNING	
15	GA5700662 - WARNING, DO NOT RIDE	
16	GA8701071 - AUSTRALIAN MADE	
17	GA222 - GREASE	
18	GA5064195 - SIGHT TUBE DECAL	
19	GA5012303 - NON SLIP GRIT TAPE, SELF ADHESIVE, SAFETY, BLACK 100mm	
GA6500019 GOLDACRES		REV 00
PRAIRIE COMPACT, 1000L		

31



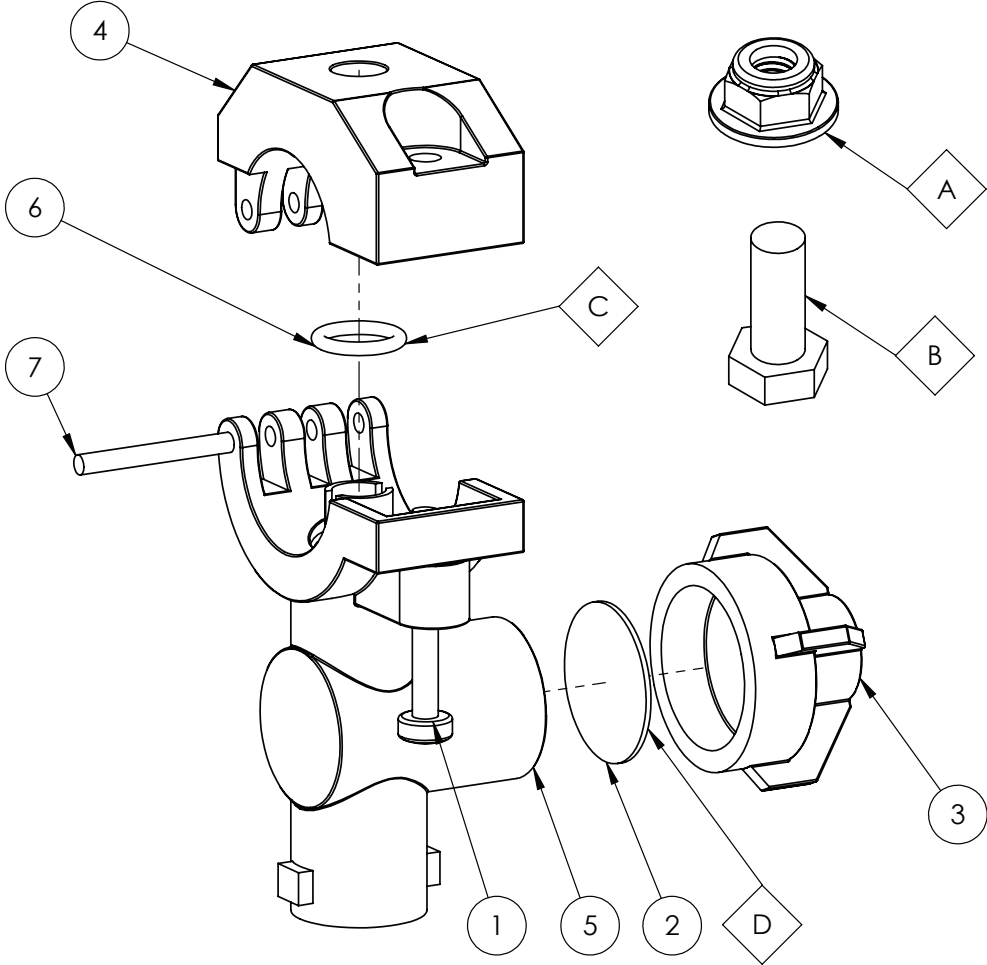
Electrical








Nozzle Body



OPTIONAL PARTS			
ITEM	PART NUMBER	DESCRIPTION	QTY
A	GA5070710	NUT FLANGE PLASTIC M8 X 1.25	1
B	GA505595	BOLT M8 X 20 SS A270	1
C	GA5077597	O-RING, VITON, CP7717-2/110-VI, SUITS QJ7421 SERIES NOZZLE BODIES.	1
D	GA5077440	DIAPHRAGM, VITON, NOZZLE BODY CHECK VALVE, TEEJET	1

IF DESCRIPTION PREFIX IS ASSEMBLY DRAWING ONLY OR PRODUCTION DRAWING ONLY THE ITEM IS NOT FOR SALE			
ITEM	PART NUMBER	DESCRIPTION	QTY
1	GA5049020	BOLT PAN HEAD M4 X 25 SS	1
2	GA5077439	CHEMSAVER, DIAPHRAGM, CP21953-EPR, TEEJET	1
3	GA5076670	CHEMSAVER, 10PSI, BLACK, TEEJET, 21950-10-NYB	1
4	GA5077532	CLAMP, NOZZLE BODY, 3/4, TEEJET, CP48221-NYB	1
5	GA5077538	NOZZLE BODY, 3/4", TEEJET, CP48498-NYB	1
6	GA5077596	O RING, 14.5 X 2.5, BUNA, CP7717-2/110-BU, SUITS QJ7421 SERIES NOZZLE BODIES.	1
7	GA5077537	PIN, NOZZLE BODY CLAMP, TEEJET, CP48256-SS	1
GA5077964		NOZZLE BODY, SINGLE, 3/4", TEEJET, QJ17560A-3/4-NYB	REV 00
			

Nozzles, Caps, Filters and Washers

TEEJET NOZZLES		LECHLER NOZZLES	
PART NUMBER	DESCRIPTION	PART NUMBER	DESCRIPTION
GA8100267	NOZZLE TIP, XR TEEJET, GREEN 015, POLYMER, XR110015-VP	GA8100000	NOZZLE TIP, AIR INJECTOR ID3 120-01, ORANGE, POLYMER, LECHLER
GA8100272	NOZZLE TIP, XR TEEJET, YELLOW 02, POLYMER, XR11002-VP	GA8100001	NOZZLE TIP, AIR INJECTOR ID3 120-015, GREEN, POLYMER, LECHLER
GA8100275	NOZZLE TIP, XR TEEJET, BLUE 03, POLYMER, XR11003-VP	GA8100002	NOZZLE TIP, AIR INJECTOR ID3 120-02, YELLOW, POLYMER, LECHLER
GA8100278	NOZZLE TIP, XR TEEJET, RED 04, POLYMER, XR11004-VP	GA8100003	NOZZLE TIP, AIR INJECTOR ID3 120-025, PURPLE, POLYMER, LECHLER
GA8100280	NOZZLE TIP, XR TEEJET, BROWN 05, POLYMER, XR11005-VP	GA8100004	NOZZLE TIP, AIR INJECTOR ID3 120-03, BLUE, POLYMER, LECHLER
GA8100282	NOZZLE TIP, XR TEEJET, GREY 06, POLYMER, XR11006-VP	GA8100005	NOZZLE TIP, AIR INJECTOR ID3 120-04, RED, POLYMER, LECHLER
GA8100284	NOZZLE TIP, XR TEEJET, WHITE 08, POLYMER, XR11008-VP	GA8100006	NOZZLE TIP, AIR INJECTOR ID3 120-05, BROWN, POLYMER, LECHLER
GA8100429	NOZZLE TIP, AIXR TEEJET, GREEN 015, POLYMER, AIXR110015VP	GA8100007	NOZZLE TIP, AIR INJECTOR ID3 120-06, GREY, POLYMER, LECHLER
GA8100431	NOZZLE TIP, AIXR TEEJET, YELLOW 02, POLYMER., AIXR11002VP	GA8100008	NOZZLE TIP, AIR INJECTOR ID3 120-08, WHITE, POLYMER, LECHLER
GA8100430	NOZZLE TIP, AIXR TEEJET, VIOLET 025, POLYMER, AIXR110025VP	GA8100018	NOZZLE TIP, AIR INJECTOR COMPACT IDK 120-01, ORANGE, POLYMER, LECHLER
GA8100432	NOZZLE TIP, AIXR TEEJET, BLUE 03, POLYMER, AIXR11003VP	GA8100019	NOZZLE TIP, AIR INJECTOR COMPACT IDK 120-015, GREEN, POLYMER, LECHLER
GA8100433	NOZZLE TIP, AIXR TEEJET, RED 04, POLYMER, AIXR11004-VP	GA8100020	NOZZLE TIP, AIR INJECTOR COMPACT IDK 120-02, YELLOW, POLYMER, LECHLER
GA8100434	NOZZLE TIP, AIXR TEEJET, BROWN 05, POLYMER, AIXR11005VP	GA8100021	NOZZLE TIP, AIR INJECTOR COMPACT IDK 120-025, PURPLE, POLYMER, LECHLER
GA8100387	NOZZLE TIP, AI TEEJET, GREEN 015, SS, AI110015-VS	GA8100022	NOZZLE TIP, AIR INJECTOR COMPACT IDK 120-03, BLUE, POLYMER, LECHLER
GA8100389	NOZZLE TIP, AI TEEJET, YELLOW 02, SS, AI11002-VS	GA8100023	NOZZLE TIP, AIR INJECTOR COMPACT IDK 120-04, RED, POLYMER, LECHLER
GA8100388	NOZZLE TIP, AI TEEJET, VIOLET 025, SS, AI110025-VS	GA8100024	NOZZLE TIP, AIR INJECTOR COMPACT IDK 120-05, BROWN, POLYMER, LECHLER
GA8100390	NOZZLE TIP, AI TEEJET, BLUE 03, SS, AI11003-VS	GA8100025	NOZZLE TIP, AIR INJECTOR COMPACT IDK 120-06, GREY, POLYMER, LECHLER
GA8100391	NOZZLE TIP, AI TEEJET, RED 04, SS, AI11004-VS	GA8100026	NOZZLE TIP, AIR INJECTOR COMPACT IDK 120-08, WHITE, POLYMER, LECHLER
GA8100392	NOZZLE TIP, AI TEEJET, BROWN 05, SS, AI11005-VS	FILTERS	
GA8100393	NOZZLE TIP, AI TEEJET, GREY 06, SS, AI11006-VS	GA5076947	CHECK VALVE, 5PSI, FILTER, NOZZLE TIP, 50 MESH SCREEN, TEEJET, 4193B-PP-5-50SS
GA8100394	NOZZLE TIP, AI TEEJET, WHITE 08, SS, AI11008-VS	GA5077158	FILTER, NOZZLE TIP, 24 MESH, POLYPROPYLENE, SS, TEEJET, 8079-PP-24
GA8100225	NOZZLE TIP, TTI TEEJET, GREEN 015, POLYMER, TTI110015-VP	GA5077159	FILTER, NOZZLE TIP, 50 MESH, POLYPROPYLENE, SS, TEEJET, 8079-PP-50
GA8100227	NOZZLE TIP, TTI TEEJET, YELLOW 02, POLYMER, TTI11002-VP	GA5077160	FILTER, NOZZLE TIP, 80 MESH, POLYPROPYLENE, SS, TEEJET, 8079-PP-80
GA8100226	NOZZLE TIP, TTI TEEJET, VIOLET 025, POLYMER, TTI110025-VP	GA5077156	FILTER, NOZZLE TIP, 100 MESH, POLYPROPYLENE, SS, TEEJET, 8079-PP-100
GA8100228	NOZZLE TIP, TTI TEEJET, BLUE 03, POLYMER, TTI11003-VP	GA5077157	FILTER, NOZZLE TIP, 200 MESH, POLYPROPYLENE, SS, TEEJET, 8079-PP-200
GA8100229	NOZZLE TIP, TTI TEEJET, RED 04, POLYMER, TTI11004-VP	CAPS	
GA8100230	NOZZLE TIP, TTI TEEJET, BROWN 05, POLYMER, TTI11005-VP	GA8100443	NOZZLE CAP, BLACK, TEEJET, SUIT TJ60, AI, AIUB, SJ3, DG TWINJET, TTI, AITTJ60, CP114442-1-CE
WASHER		GA8100464	NOZZLE CAP, BLACK, TEEJET, SUIT FLAT SPRAY SMALLER CAPACITY NOZZLES (UP TO 08), CP114440-1-CE
GA5055245	WASHER, NOZZLE CAP SEAL, RUBBER, 19 OD X 9 ID, SUIT TEE JET NOZZLE	GA8100059	NOZZLE CAP, 10mm ACROSS FLATS, BLACK, LECHLER

Miscellaneous Parts

PART NUMBER	DESCRIPTION	PART NUMBER	DESCRIPTION
SUCTION HOSE		LAY FLAT HOSE	
GA2000218	HOSE, SUCTION, WIRE REINFORCED, 20mm, BLACK, HOS20S, SOLD PER METER, 20M IN A ROLL	GA2000220	HOSE, SUCTION, PVC, 25mm, BLACK, HOS25PVC, SOLD PER METER, 30M IN A ROLL.
GA2000222	HOSE, SUCTION, 25mm, WIRE REINFORCED, HOS25S, SOLD PER METER, 20M IN A ROLL		
GA2000224	HOSE, SUCTION, 32mm, WIRE REINFORCED, HOS32S, SOLD PER METER, 20M IN A ROLL	HOSE CLAMPS	
GA2000226	HOSE, SUCTION, 38mm, WIRE REINFORCED, HOS38S, SOLD PER METER, 20M IN A ROLL	GA5004865	Hose Clamp, 3/8,SS (8-16/9W)
GA2000229	HOSE, SUCTION, 51mm, WIRE REINFORCED, HOS51S, SOLD PER METER, 20M IN A ROLL	GA5000469	Hose clamp, 1/2" SS 12-20/9W3
GA2000230	HOSE 63mm SUCTION (WIRE REINFORCED), HOS63S, SOLD PER METER,	GA5000999	Hose clamp, 3/4" SS (16-27/12W)
GA2000232	HOSE, SUCTION, 75mm, WIRE REINFORCED, HOS75S, SOLD PER METER, 20M IN A ROLL	GA5001681	Hose clamp, 1" SS (20-32/12W)
NOTE: SUCTION HOSE CAN BE IDENTIFIED BY ITS EXTERNAL GREEN STRIPE AND WIRE REINFORCEMENT.		GA5016813	Hose Clamp, 1 SS large (25-40/12W)
PRESSURE HOSE		GA5002783	Hose Clamp, 1 1/4, SS (30-45/13W)
GA2000200	HOSE, PRESSURE, 7mm, BLACK (250PSI), HOS7P	GA5002873	Hose Clamp, 1 1/2" SS (32-50/12W)
GA2000211	HOSE, PRESSURE, 12mm, BLACK, 250PSI, HOS13P, SOLD PER METER, ROLL = 250M	GA5003325	Hose clamp, 2 SS, (40-60/12W)
GA2000216	HOSE, PRESSURE, 20mm, BLACK 250PSI, HOS20P, SOLD PER METER, ROLL = 100M.	GA5016815	Hose Clamp, 50-70 /12 C7 W4, SS
GA2000219	HOSE, PRESSURE, 25mm, BLACK 250PSI, HOS25P, SOLD PER METER, 100M IN A ROLL.	GA5004241	Hose clamp, 60-80mm, S/S 31/2
GA2000223	HOSE, PRESSURE, 32mm BLACK (250 PSI), HOS32P, SOLD PER METER, 60M IN A ROLL.	CABLE TIES	
GA2000225	HOSE, PRESSURE, 38mm BLACK (250 PSI), HOS38P, SOLD PER METER, 20M IN A ROLL	GA5002173	Cable tie Black 100 x 2.5 [C]
NOTE: PRESSURE HOSE CAN BE IDENTIFIED BY ITS BLUE INTERNAL LAYER.		GA5003517	Cable tie black 140 x 3.5 [C]
PVC HOSE		GA5004455	Cable ties Black 190 x 4.5 mm [C]
GA2000220	HOSE, SUCTION, PVC, 25mm, BLACK, HOS25PVC, SOLD PER METER, 30M IN A ROLL.	GA5000685	Cable Tie Black 320 x 7.5mm [C]
GA2000227	HOSE, SUCTION, PVC, 40mm, BLACK, HOS40PVC, SOLD PER METER, 20M IN A ROLL	GA5000687	Cable tie, Black, 370x 4.8mm [C] 100PK
GA2000228	HOSE, PVC, 50mm, BLACK, HOS50PVC, SOLD PER METER, 20M IN A ROLL	GA5021235	Cable Tie Black 540 x 7.5mm [C]
GA2000231	HOSE, SUCTION, PVC, 75mm, BLACK, HOS75PVC, SOLD PER METER	SPIRAL GUARD	
NOTE: PVC HOSE CAN BE IDENTIFIED BY ITS RIBBED OUTER SURFACE.		GA5015669	Spiral guard, 20mm, Black
SIGHT TUBE HOSE			
GA2000209	Hose, Clear, 12mm, Sight tube, HOS12SIGHT, Sold per meter, Roll = 20M		
GA2000210	Hose, 12mm, Clear, Wire reinforced, HOS12WSIGHT, Sold per meter, Roll = 20M		

Goldacres Terms & Conditions of Sale & Warranty

1. These terms and conditions apply to all goods and/or services supplied by us to you. You are agreeing to them by placing an order with us.
2. Unless you have a previously approved account with us you must pay us the purchase price for the goods and/or services we supply to you, together with any other applicable fees or charges immediately on delivery or collection of the goods, or if ordered online or by phone on the placement of your order. All repairs or servicing must be paid for before we will release the goods to you. If you do have an
 - 3. Time is of the essence for all payments required under these conditions.

Unless specifically stated otherwise, all prices which we quote or estimate to you are inclusive of GST for goods supplied within Australia and exclusive of GST for goods exported outside of Australia. If GST is payable on a Taxable Supply made by us to you, then you must also pay the amount of GST payable in respect of that Taxable Supply as an additional payment.
 - 5. You must pay interest on any amounts not paid by the due date at a rate 2% higher than the rate for the time being fixed under section 2 of the Penalty Interest Rates Act 1983 (Victoria) as at the date the amount became due.
 - 6. Property in goods supplied (and in any goods which we may have previously supplied to you) remains with us until we have been paid in full for all amounts you owe us including payment for the goods and any applicable interest, fees and charges, and until then:
 - a. you hold the goods only as a bailee and have no right to claim any other interest in the goods, including any security for any liquidated or unliquidated debt or obligation that we owe you, or any lien over the goods;
 - b. we may enter and recover possession of the goods from any site owned, possessed or controlled by you and you
 - c. you must not deliver or on-supply any of the goods (nor any document of title to them) to any person, but if you do then you hold the proceeds of the on-supply of the goods on trust for us and must pay the amount to us immediately when received;
 - d. you must not allow any person to have or acquire any security interest in the goods nor create any absolute or defeasible interest in the goods in relation to any third party except as we may authorise;
 - e. you must insure the goods for their full insurable or replaceable value (whichever is higher) and provide us with details of the insurance if we request it;
 - f. you must not remove, deface or obliterate any identifying mark or number on any of the goods;
 - g. your right to possession of the goods ceases if we recall or recover the goods, or if you become insolvent, you enter into voluntary or involuntary administration or receivership, or a petition is filed for your bankruptcy or winding up.
- You further agree:
 - h. that the retention of title under this clause is a security interest within the meaning of the Personal Property Securities Act 2009 (Cth) ("PPSA");
- i. to grant us a purchase money security interest (as that term is defined in the PPSA) in relation to the goods;
- j. to contract out of all of your existing and future rights under the provisions referred to in paragraphs (a) through to (r) of section 115(1) of the PPSA, to the full extent permitted;
- k. to sign any documents or do any things which we may reasonably require to enable us to register a financing statement or financing change statement on the register (as defined in the PPSA);
- l. to pay any costs we incur in registering and maintaining a financing statement (including registering a financing change statement) and enforcing the security interest created under these terms and conditions.
7. Risk in the goods passes to you upon their delivery to or collection by you.
8. You hereby indemnify us and our employees, directors, contractors and agents against, and release us and them from, any loss (including reasonable legal costs and expenses) or liability incurred by us and/or them arising from any claim, demand, suit, action or proceeding by any person against us and/or them where such loss or liability arose directly or indirectly from or in connection with any breach of these terms and conditions or from use of the goods and/or services unless such liability is directly caused by the negligence or default of the person indemnified.
9. You, or anyone on your behalf must not, and you must take steps to ensure that your employees, agents and contractors do not, nor assist anyone else to:
 - a. copy, memorise, reproduce, misappropriate or reverse engineer the whole or any part of the goods
 - b. challenge, contest or oppose any of our intellectual property rights
 - c. use any name or logo associated with the goods other than as we authorise you
 - d. divulge our confidential information to any person or use it for your own benefit except as we have expressly authorised or as required by law.
10. Any specifications, drawings, details, statistics or performance figures we may have given you about the goods and/or services are only estimates and any deviation does not entitle you to make any claim against us. Any sample is provided only to indicate the general nature of the product, and we do not warrant that goods supplied will exactly correspond with any sample or with any previous or future goods supplied.
11. Except as stated in any separate written warranty we may provide you with the goods or a quote, under no circumstances will we have any liability to replace or repair defects in the goods where:
 - a. the defects have not arisen solely from faulty materials supplied by us or faulty workmanship by us;
 - b. the goods have received maltreatment, inattention or interference or have been used, applied, packaged or stored other than in accordance with our instructions and recommendations;
 - c. products not manufactured by or approved by us have been used with the goods.
12. Except as provided in these conditions, all express and implied warranties guarantees and conditions under statute or general law as to merchantability, description, quality, suitability or fitness of the goods for any purpose or as to design, assembly, installation, materials or workmanship or otherwise are expressly excluded. We are not liable for physical or financial injury, loss or damage or for consequential loss or damage of any kind arising out of the application, supply, layout, assembly, installation or operation of the goods or arising out of our negligence or in any way whatsoever. The exceptions in clause (12) extend to any Third Party Accessories installed in the goods.
13. If any condition or warranty is implied into this agreement under the Competition and Consumer Act (2010) (Cth) or any equivalent State or Territory legislation and cannot be excluded, then our liability is limited to one or more of the following:
 - a. in the case of goods, the replacement of the goods or the supply of equivalent goods, the repair of the goods, the payment of the cost of replacing the goods or of acquiring equivalent goods, or the payment of the cost of having the goods repaired;
 - b. in the case of services, the supplying of the services again, or the payment of the cost of having the services supplied again.
14. Nothing in these conditions is to be read or applied so as to exclude, restrict or modify or have the effect of excluding, restricting or modifying any condition, warranty, guarantee, right or remedy implied by law and which by law cannot be excluded, restricted or modified.
15. Any quotes on pricing provided by us are consistent with the prevailing market at the time of quotation, including considerations as to rates of freight, insurance, customs, duties, exchange, shipping expenses, sorting and stacking charges, cartage, cost of materials and other charges affecting the cost of production prevailing at that date.
16. Any increases in the quote price occurring either before or during the agreement, shall be to your account.
17. Our quotations are open for acceptance within the period stated therein. If no period is stated, our quotations are open for acceptance for (14) fourteen days from the date the quote was given.
18. All prices listed in our quotations and product catalogue are subject to change or alteration without notice.
19. Unless we otherwise agree in writing we accept credit card or eftpos payments only.
20. We do not accept payment by cheque unless we have previously agreed in writing to do so.
21. Any goods you deliver to us must be free of any chemicals. If you deliver goods that are not free of chemicals, you must pay any costs incurred by us including the cost of our own staff in removing and disposing of the chemicals and cleaning the goods.
22. If after 28 days of notifying you that your goods are ready for delivery we have received no communication from you, we retain any rights under the Australian Consumer Law and Fair Trading Act 2012 (Vic) to sell the goods to recover the value of any outstanding debt you may owe us.
23. You are responsible for backing up any Data that you, or your agent, may install on the goods. If the Data is wiped, corrupted, or lost, we are not liable (whether we are negligent or otherwise) for any damage that may result from that Data being wiped, corrupted or lost.
24. Before you use any of our goods you must check, and if necessary adjust, all settings to ensure the goods are properly calibrated.
25. We are not liable to you for any failure by us to perform any of our obligations under this agreement caused by an impediment or circumstance beyond our control.
26. In these terms and conditions,
 - a. "we", "us" or "our" means the entity within the Goldacres Group from which you purchase goods and/or services, including, but not limited to:
 - i. Goldacres Trading Pty Ltd ACN 061 306 732; and
 - ii. Goldacres Sprayer Centre Pty Ltd ACN 639 231 520
 - b. "you" or "your" means the individual or company that purchases goods and/or services from us.
 - c. "our confidential information" includes all of our secrets, ideas, know how, concepts, information, copyright, computer programs, manuals, precedents whether in writing or in any other form and all other information relating to us or our affairs, businesses, sales, marketing or promotional information, and any information about the ingredients, mix, make-up or manufacturing process of the goods
 - d. "goods" includes any associated services except where the context does not permit.
 - e. "Third Party Accessories" includes anything incorporated in the goods that is manufactured and supplied to us by a third party.
 - f. "Data" includes any information capable of being installed and or stored on an electronic device.
27. Used Goods- For any second hand or used Goods sold, except to the extent that a manufacturer's warranty applies.
 - a. all used or second-hand Goods are sold on an "as is where is" basis with all existing or future inadequacies, faults or defects, if any, and whether they are known or unknown.
 - b. The Seller does not warrant the second hand or used Goods are fit for any purpose or free from any defects and does not warrant the accuracy of any service or repair history, meter or hour readings and to the extent permitted by law the Buyer releases the Seller from all liability arising or connection with any defects faults or inadequacies in the Goods and any warranty under these terms or at law excludes liability for costs other than what is reasonable or customary to rectify and does not include costs for time or labour, testing, travel or freight or packaging and handling.