

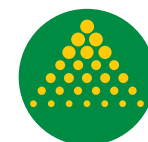
IMM Krono Boom 12-15mtr

GA8701614 REV 00

KRONO BOOM 12mt-GA4908030

KRONO BOOM 15mt-GA4908035

PARTS MANUAL



GOLDACRES

Goldacres Terms & Conditions of Sale & Warranty

1. These terms and conditions apply to all goods and/or services supplied by us to you. You are agreeing to them by placing an order with us.
2. Unless you have a previously approved account with us you must pay us the purchase price for the goods and/or services we supply to you, together with any other applicable fees or charges immediately on delivery or collection of the goods, or if ordered online or by phone on the placement of your order. All repairs or servicing must be paid for before we will release the goods to you. If you do have an
3. Time is of the essence for all payments required under these conditions.

Unless specifically stated otherwise, all prices which we quote or estimate to you are inclusive of GST for goods supplied within Australia and exclusive of GST for goods exported outside of Australia. If GST is payable on a Taxable Supply made by us to you, then you must also pay the amount of GST payable in respect of that Taxable Supply as an additional payment.

4. You must pay interest on any amounts not paid by the due date at a rate 2% higher than the rate for the time being fixed under section 2 of the Penalty Interest Rates Act 1983 (Victoria) as at the date the amount became due.
5. Property in goods supplied (and in any goods which we may have previously supplied to you) remains with us until we have been paid in full for all amounts you owe us including payment for the goods and any applicable interest, fees and charges, and until then:
 - a. you hold the goods only as a bailee and have no right to claim any other interest in the goods, including any security for any liquidated or unliquidated debt or obligation that we owe you, or any lien over the goods;
 - b. we may enter and recover possession of the goods from any site owned, possessed or controlled by you and you
 - c. you must not deliver or on-supply any of the goods (nor any document of title to them) to any person, but if you do then you hold the proceeds of the on-supply of the goods on trust for us and must pay the amount to us immediately when received;
 - d. you must not allow any person to have or acquire any security interest in the goods nor create any absolute or defeasible interest in the goods in relation to any third party except as we may authorise;
 - e. you must insure the goods for their full insurable or replaceable value (whichever is higher) and provide us with details of the insurance if we request it;
 - f. you must not remove, deface or obliterate any identifying mark or number on any of the goods;
 - g. your right to possession of the goods ceases if we recall or recover the goods, or if you become insolvent, you enter into voluntary or involuntary administration or receivership, or a petition is filed for your bankruptcy or winding up.

You further agree:

- h. that the retention of title under this clause is a security interest within the meaning of the Personal Property Securities Act 2009 (Cth) ("PPSA");
- i. to grant us a purchase money security interest (as that term is defined in the PPSA) in relation to the goods;
- j. to contract out of all of your existing and future rights under the provisions referred to in paragraphs (a) through to (f) of section 115(1) of the PPSA, to the full extent permitted;

- k. to sign any documents or do any things which we may reasonably require to enable us to register a financing statement or financing change statement on the register (as defined in the PPSA);
- l. to pay any costs we incur in registering and maintaining a financing statement (including registering a financing change statement) and enforcing the security interest created under these terms and conditions.
7. Risk in the goods passes to you upon their delivery to or collection by you.
8. You hereby indemnify us and our employees, directors, contractors and agents against, and release us and them from, any loss (including reasonable legal costs and expenses) or liability incurred by us and/or them arising from any claim, demand, suit, action or proceeding by any person against us and/or them where such loss or liability arose directly or indirectly from or in connection with any breach of these terms and conditions or from use of the goods and/or services unless such liability is directly caused by the negligence or default of the person indemnified.
9. You, or anyone on your behalf must not, and you must take steps to ensure that your employees, agents and contractors do not, nor assist anyone else to:
 - a. copy, memorise, reproduce, misappropriate or reverse engineer the whole or any part of the goods
 - b. challenge, contest or oppose any of our intellectual property rights
 - c. use any name or logo associated with the goods other than as we authorise you
 - d. divulge our confidential information to any person or use it for your own benefit except as we have expressly authorised or as required by law.
10. Any specifications, drawings, details, statistics or performance figures we may have given you about the goods and/or services are only estimates and any deviation does not entitle you to make any claim against us. Any sample is provided only to indicate the general nature of the product, and we do not warrant that goods supplied will exactly correspond with any sample or with any previous or future goods supplied.
11. Except as stated in any separate written warranty we may provide you with the goods or a quote, under no circumstances will we have any liability to replace or repair defects in the goods where:
 - a. the defects have not arisen solely from faulty materials supplied by us or faulty workmanship by us;
 - b. the goods have received maltreatment, inattention or interference or have been used, applied, packaged or stored other than in accordance with our instructions and recommendations;
 - c. products not manufactured by or approved by us have been used with the goods.
12. Except as provided in these conditions, all express and implied warranties guarantees and conditions under statute or general law as to merchantability, description, quality, suitability or fitness of the goods for any purpose or as to design, assembly, installation, materials or workmanship or otherwise are expressly excluded. We are not liable for physical or financial injury, loss or damage or for consequential loss or damage of any kind arising out of the application, supply, layout, assembly, installation or operation of the goods or arising out of our negligence or in any way whatsoever. The exceptions in clause (12) extend to any Third Party Accessories installed in the goods.

13. If any condition or warranty is implied into this agreement under the Competition and Consumer Act (2010) (Cth) or any equivalent State or Territory legislation and cannot be excluded, then our liability is limited to one or more of the following:
 - a. in the case of goods, the replacement of the goods or the supply of equivalent goods, the repair of the goods, the payment of the cost of replacing the goods or of acquiring equivalent goods, or the payment of the cost of having the goods repaired;
 - b. in the case of services, the supplying of the services again, or the payment of the cost of having the services supplied again.
14. Nothing in these conditions is to be read or applied so as to exclude, restrict or modify or have the effect of excluding, restricting or modifying any condition, warranty, guarantee, right or remedy implied by law and which by law cannot be excluded, restricted or modified.
15. Any quotes on pricing provided by us are consistent with the prevailing market at the time of quotation, including considerations as to rates of freight, insurance, customs, duties, exchange, shipping expenses, sorting and stacking charges, cartage, cost of materials and other charges affecting the cost of production prevailing at that date.
16. Any increases in the quote price occurring either before or during the agreement, shall be to your account.
17. Our quotations are open for acceptance within the period stated therein. If no period is stated, our quotations are open for acceptance for (14) fourteen days from the date the quote was given.
18. All prices listed in our quotations and product catalogue are subject to change or alteration without notice.
19. Unless we otherwise agree in writing we accept credit card or eftpos payments only.
20. We do not accept payment by cheque unless we have previously agreed in writing to do so.
21. Any goods you deliver to us must be free of any chemicals. If you deliver goods that are not free of chemicals, you must pay any costs incurred by us including the cost of our own staff in removing and disposing of the chemicals and cleaning the goods.
22. If after 28 days of notifying you that your goods are ready for delivery we have received no communication from you, we retain any rights under the Australian Consumer Law and Fair Trading Act 2012 (Vic) to sell the goods to recover the value of any outstanding debt you may owe us.
23. You are responsible for backing up any Data that you, or your agent, may install on the goods. If the Data is wiped, corrupted, or lost, we are not liable (whether we are negligent or otherwise) for any damage that may result from that Data being wiped, corrupted or lost.
24. Before you use any of our goods you must check, and if necessary adjust, all settings to ensure the goods are properly calibrated.
25. We are not liable to you for any failure by us to perform any of our obligations under this agreement caused by an impediment or circumstance beyond our control.

26. In these terms and conditions,

- a. "we", "us" or "our" means the entity within the Goldacres Group from which you purchase goods and/or services, including, but not limited to:
 - i. Goldacres Trading Pty Ltd ACN 061 306 732; and
 - ii. Goldacres Sprayer Centre Pty Ltd ACN 639 231 520
 - b. "you" or "your" means the individual or company that purchases goods and/or services from us.
 - c. "our confidential information" includes all of our secrets, ideas, know how, concepts, information, copyright, computer programs, manuals, precedents whether in writing or in any other form and all other information relating to us or our affairs, businesses, sales, marketing or promotional information, and any information about the ingredients, mix, make-up or manufacturing process of the goods
 - d. "goods" includes any associated services except where the context does not permit.
 - e. "Third Party Accessories" includes anything incorporated in the goods that is manufactured and supplied to us by a third party.
 - f. "Data" includes any information capable of being installed and or stored on an electronic device.
27. Used Goods- For any second hand or used Goods sold, except to the extent that a manufacturer's warranty applies.
- a. all used or second-hand Goods are sold on an "as is where is" basis with all existing or future inadequacies, faults or defects, if any, and whether they are known or unknown.
 - b. The Seller does not warrant the second hand or used Goods are fit for any purpose or free from any defects and does not warrant the accuracy of any service or repair history, meter or hour readings and to the extent permitted by law the Buyer releases the Seller from all liability arising or connection with any defects faults or inadequacies in the Goods and any warranty under these terms or at law excludes liability for costs other than what is reasonable or customary to rectify and does not include costs for time or labour, testing, travel or freight or packaging and handling.

Goldacres Terms & Conditions of Sale & Warranty



For further information about any of the products shown please visit - www.goldacres.com.au

© Goldacres Trading 2021

This publication and all designs are copyright.

No part, products or designs may be reproduced by any process except in accordance with the Copyright act 1968.

All information in this operator's manual is based on the latest product information available at the time of printing. The policy of Goldacres is one of continuous improvement and as such, Goldacres reserve the right to alter any specifications and designs without notice and without incurring any obligation regarding such changes.

No part of this manual may be reproduced without written permission from Goldacres. All photographs and technical information remain the property of Goldacres.

Goldacres Trading Pty Ltd
3 Morang Crescent
Mitchell Park Vic 3355
Ph: 03 5342 6399
Fax: 03 5342 6308



Contents

Goldacres Terms & Conditions of Sale & Warranty	2	Boom Plumbing Line, Centre Section, IMM, Krono Delta 15mt	23
.	3	Boom Plumbing Line, Inner Wing, IMM, Krono Delta, 15mt . . .	24
Goldacres Terms & Conditions of Sale & Warranty	3	Boom Plumbing Line, Mid Wing, IMM, Krono Delta, 15mt . . .	25
Contents	4	Boom Plumbing Line, Outer Wing, IMM, Krono Delta 15mt . . .	26
Miscellaneous Parts.	5	Hydraulic Line Assy, Centre Section, IMM, Krono Delta, 15mt .	27
Tower, Krono Boom, 12mtr	6	Nozzle Body, Teejet, Single, 1/2"	28
Rocker Frame, Krono, 12mtr	7	Nozzle Body, Teejet, Clockface, 1/2"	29
Centre Section , Krono, 12mtr, Old Style	8		
Centre Section , Krono, 12mtr, Old Style	9		
Centre Section, Krono, 12mt, New Style.	10		
Boom Wings, Krono, 12mtr	11		
Mounting Brackets, Boom Centre	12		
Boom Plumbing Line, Krono, Centre Section, 12mtr	13		
Boom Plumbing Line, Krono, Inner 12mtr	14		
Boom Plumbing Line, Krono, Outer 12mtr	15		
Boom Plumbing Line, Krono, Breakaway, 12mtr	16		
Tower Assembly, IMM, Krono Delta, 15mtr	17		
Centre Section, IMM, Krono Delta, 15mt	18		
Rocker Frame, IMM, Krono Delta, 15mt.	19		
Boom Wing, Inner, IMM, Krono Delta, 15mt.	20		
Boom Wing, Mid, IMM, Krono Delta, 15mt	21		
Boom Wing, Outer, IMM, Krono Delta, 15mt	22		

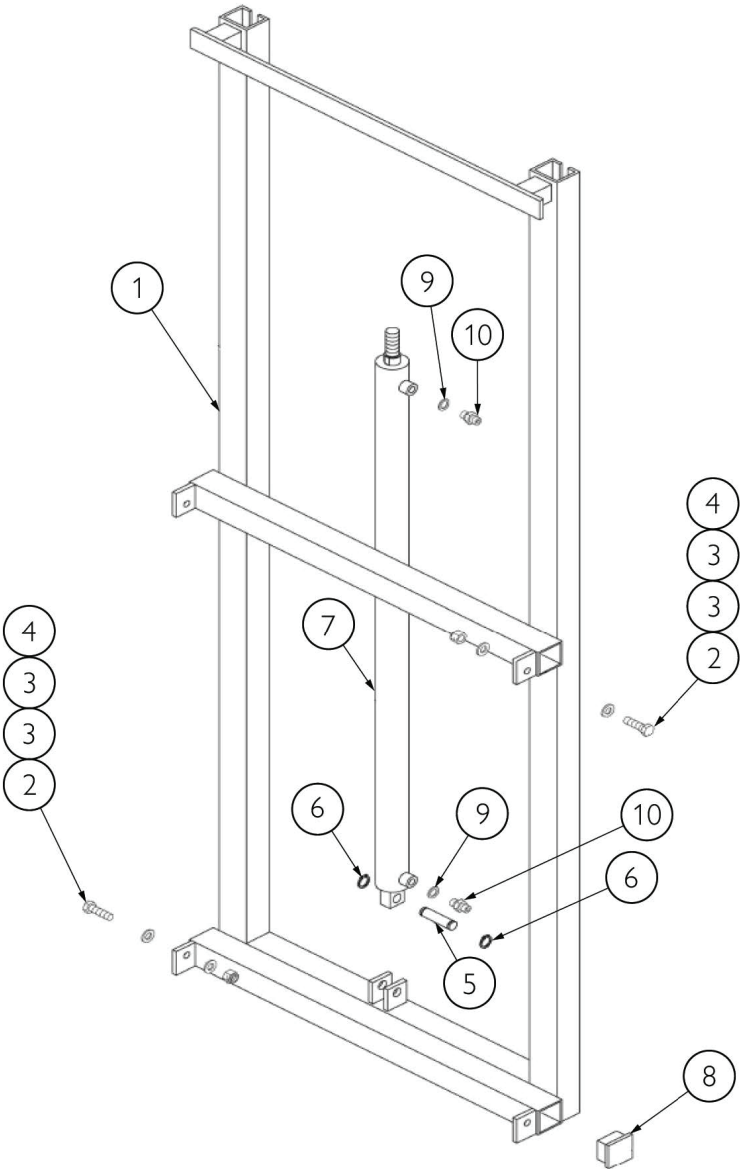
Miscellaneous Parts



PART NUMBER	DESCRIPTION	PART NUMBER	DESCRIPTION
SUCTION HOSE		LAY FLAT HOSE	
GA2000218	HOSE, SUCTION, WIRE REINFORCED, 20mm, BLACK, HOS20S, SOLD PER METER, 20M IN A ROLL	GA2000220	HOSE, SUCTION, PVC, 25mm, BLACK, HOS25PVC, SOLD PER METER, 30M IN A ROLL.
GA2000222	HOSE, SUCTION, 25mm, WIRE REINFORCED, HOS25S, SOLD PER METER, 20M IN A ROLL		
GA2000224	HOSE, SUCTION, 32mm, WIRE REINFORCED, HOS32S, SOLD PER METER, 20M IN A ROLL	HOSE CLAMPS	
GA2000226	HOSE, SUCTION, 38mm, WIRE REINFORCED, HOS38S, SOLD PER METER, 20M IN A ROLL	GA5004865	HOSE CLAMP, 3/8,SS (8-16/9W)
GA2000229	HOSE, SUCTION, 51mm, WIRE REINFORCED, HOS51S, SOLD PER METER, 20M IN A ROLL	GA5000469	HOSE CLAMP, 1/2" SS 12-20/9W3
GA2000230	HOSE 63mm SUCTION (WIRE REINFORCED), HOS63S, SOLD PER METER,	GA5000999	HOSE CLAMP, 3/4" SS (16-27/12W)
GA2000232	HOSE, SUCTION, 75mm, WIRE REINFORCED, HOS75S, SOLD PER METER, 20M IN A ROLL	GA5001681	HOSE CLAMP, 1" SS (20-32/12W)
NOTE: SUCTION HOSE CAN BE IDENTIFIED BY ITS EXTERNAL GREEN STRIPE AND WIRE REINFORCEMENT.		GA5016813	HOSE CLAMP, 1 SS LARGE (25-40/12W)
PRESSURE HOSE		GA5002783	HOSE CLAMP, 1 1/4, SS (30-45/13W)
GA2000200	HOSE, PRESSURE, 7mm, BLACK (250PSI), HOS7P	GA5002873	HOSE CLAMP, 1 1/2" SS (32-50/12W)
GA2000211	HOSE, PRESSURE, 12mm, BLACK, 250PSI, HOS13P, SOLD PER METER, ROLL = 250M	GA5003325	HOSE CLAMP, 2 SS, (40-60/12W)
GA2000216	HOSE, PRESSURE, 20mm, BLACK 250PSI, HOS20P, SOLD PER METER, ROLL = 100M.	GA5016815	HOSE CLAMP, 50-70 /12 C7 W4, SS
GA2000219	HOSE, PRESSURE, 25mm, BLACK 250PSI, HOS25P, SOLD PER METER, 100M IN A ROLL.	GA5004241	HOSE CLAMP, 60-80mm, S/S 31/2
GA2000223	HOSE, PRESSURE, 32mm BLACK (250 PSI), HOS32P, SOLD PER METER, 60M IN A ROLL.	CABLE TIES	
GA2000225	HOSE, PRESSURE, 38mm BLACK (250 PSI), HOS38P, SOLD PER METER, 20M IN A ROLL	GA5002173	CABLE TIE BLACK 100 X 2.5 [C]
NOTE: PRESSURE HOSE CAN BE IDENTIFIED BY ITS BLUE INTERNAL LAYER.		GA5003517	CABLE TIE BLACK 140 X 3.5 [C]
PVC HOSE		GA5004455	CABLE TIES BLACK 190 X 4.5 mm [C]
GA2000220	HOSE, SUCTION, PVC, 25mm, BLACK, HOS25PVC, SOLD PER METER, 30M IN A ROLL.	GA5000685	CABLE TIE BLACK 320 X 7.5mm [C]
GA2000227	HOSE, SUCTION, PVC, 40mm, BLACK, HOS40PVC, SOLD PER METER, 20M IN A ROLL	GA5000687	CABLE TIE, BLACK, 370X 4.8mm [C] 100PK
GA2000228	HOSE, PVC, 50mm, BLACK, HOS50PVC, SOLD PER METER, 20M IN A ROLL	GA5021235	CABLE TIE BLACK 540 X 7.5mm [C]
GA2000231	HOSE, SUCTION, PVC, 75mm, BLACK, HOS75PVC, SOLD PER METER	SPIRAL GUARD	
NOTE: PVC HOSE CAN BE IDENTIFIED BY ITS RIBBED OUTER SURFACE.		GA5015669	SPIRAL GUARD, 20mm, BLACK
SIGHT TUBE HOSE			
GA2000209	HOSE, CLEAR, 12mm, SIGHT TUBE, HOS12SIGHT, SOLD PER METER, ROLL = 20M	BRAKE LINE (BUNDY TUBE)	
GA2000210	HOSE, 12mm, CLEAR, WIRE REINFORCED, HOS12WSIGHT, SOLD PER METER, ROLL = 20M	GA5006565	BUNDY TUBE, BRAKE LINE, 1/4 (6m ROLL)

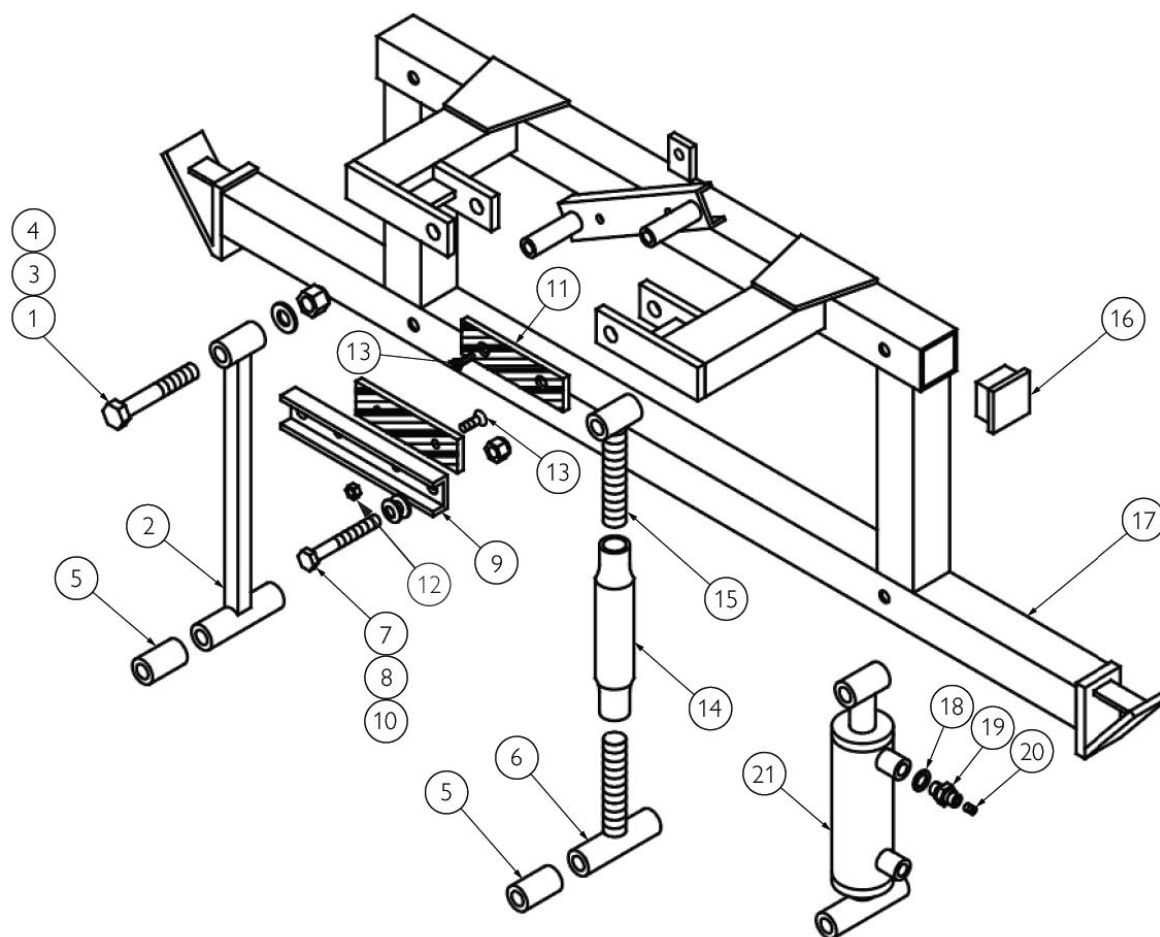



Tower, Krono Boom, 12mtr



IF DESCRIPTION PREFIX IS ASSEMBLY DRAWING ONLY OR PRODUCTION DRAWING ONLY THE ITEM IS NOT FOR SALE			
ITEM	PART NUMBER	DESCRIPTION	QTY
1	GA5074680	TOWER LIFT, KRONO, 12MT, IC29SLV101	1
2	GA5000319	SET SCREW M12 X 40 GR8.8 ZP	4
3	GA5000577	WASHER 12mm FLAT SS HD	8
4	GA5001030	NUT M12 NYLOC GALVANISED	4
5	GA5075065	CLEVIS PIN, M16, SUIT, KRONO BOOM, 20PE0550Z	1
6	GA5075195	CIRCLIP, M16, KRONO, TOWER CYLINDER, 05SE0020	2
7	GA5074685	HYDRAULIC CYLINDER, TOWER LIFT, SUIT, KRONO, 12MT, 15PI0200V	1
8	GA4503500	50 X 50 RHS END CAP	4
9	GA5075285	WASHER, 1/4", BONDED, SUIT, KRONO, TOWER CYLINDER, 07RO0050	2
10	GA5075290	NIPPLE, 1/4", HYDRAULIC, KRONO, TOWER CYLINDER	2
GA7800110		TOWER, KRONO BOOM, 12MTR	REV 00

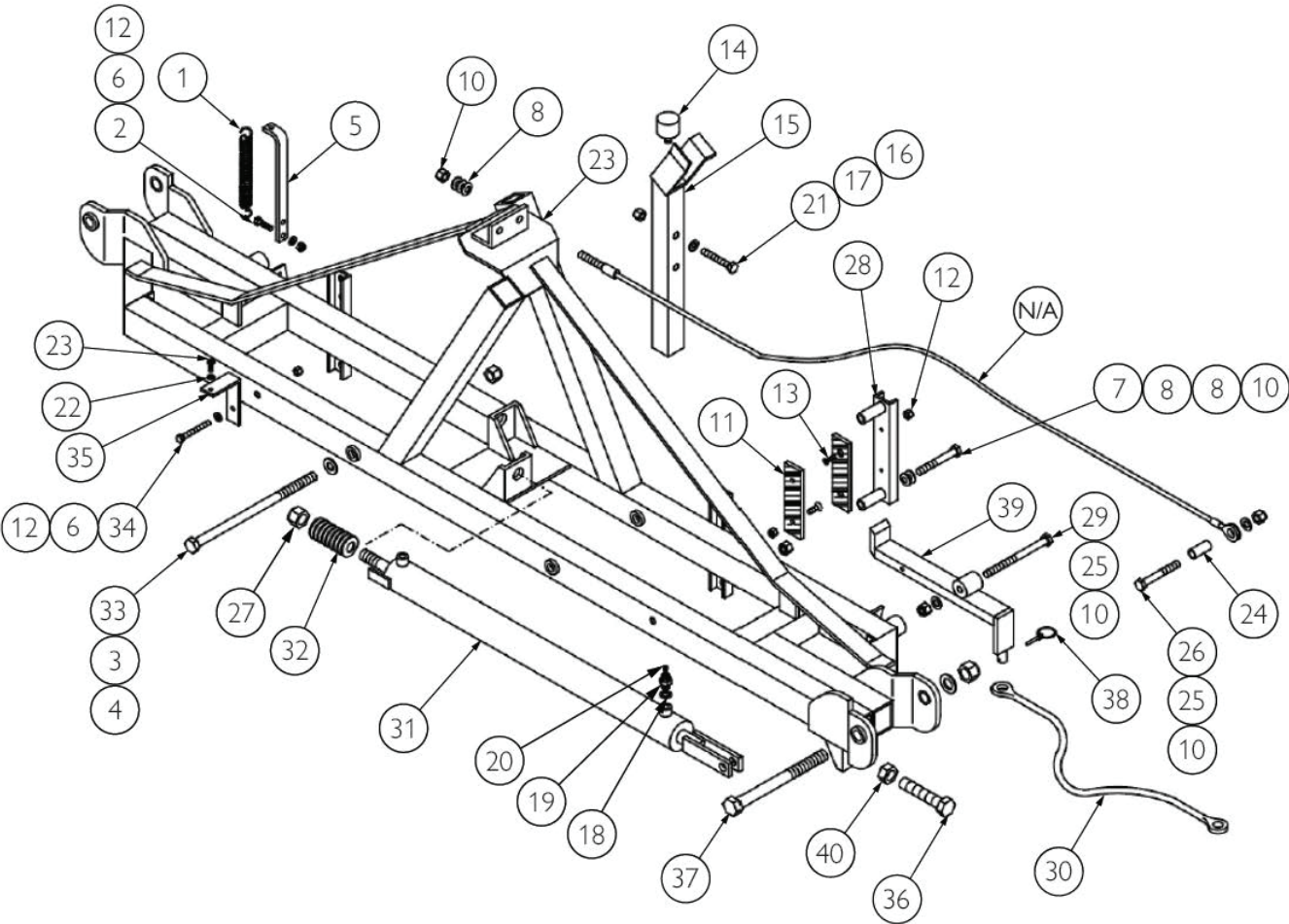
Rocker Frame, Krono, 12mtr



IF DESCRIPTION PREFIX IS ASSEMBLY DRAWING ONLY OR PRODUCTION DRAWING ONLY THE ITEM IS NOT FOR SALE			
ITEM	PART NUMBER	DESCRIPTION	QTY
1	GA5011297	BOLT M16 X 90 GR8.8 ZP	2
2	GA5074580	FIXED CONNECTING ROD, SUIT, KRONO, ROCKER FRAME, IZ82BIE000	1
3	GA5001043	WASHER 16mm FLAT SS HD	4
4	GA5001029	NUT M16 NYLOC ZP	4
5	GA5074585	SPACING BUSH, L=48, KRONO	2
6	GA5074590	RIGHT SIDE TENSIONER, KRONO, ROCKER FRAME, IZ82TEN000	1
7	GA5000259	BOLT M12 X 100 GR8.8 ZP	2
8	GA5000577	WASHER 12mm FLAT SS HD	2
9	GA5074595	ROCKER CLUTCH, KRONO, ROCKER FRAME, IZ82FEU000	1
10	GA5012461	NUT M12 NYLOC ZP	2
11	GA5074600	ORBILAN PLATE, SUIT, KRONO, ROCKER FRAME, I082PLA000	2
12	GA5004917	NUT M8 NYLOC ZP	4
13	GA0500060	HEX SOCKET COUNTERSUNK FLAT HEAD CAP SCREW M8X25 UNI 593310.9	4
14	GA5074605	THIRD POINT TENSIONER ROD, KRONO, ROCKER FRAME, 21AT0030	1
15	GA5074610	LEFT SIDE TENSIONER, KRONO, ROCKER FRAME, IZ82TEN010	1
16	GA4503500	50 X 50 RHS END CAP	2
17	GA5074615	ROCKER FRAME, KRONO, 12MT, IC82BIL000	1
18	GA5075285	WASHER, 1/4", BONDED, SUIT, KRONO, TOWER CYLINDER, 07RO0050	1
19	GA5075290	NIPPLE, 1/4", HYDRAULIC, KRONO, TOWER CYLINDER	1
20	GA5075295	GIGLUER, M8, SUIT, KRONO, ROCKER FRAME CYLINDER, 09GGI000	1
21	GA5074620	HYDRAULIC CYLINDER, ROCKER ARM, SUIT, KRONO, 12MT, I082PIS011	1
GA7800107		ROCKER FRAME, KRONO, 12MT	REV 00
 GOLDACRES			



Centre Section , Krono, 12mtr, Old Style



CONTINUE ON FOLLOWING PAGE

GA7800108  GOLDACRES	CENTRE SECTION, KRONO, 12MTR, OLD STYLE	REV
--	---	-----

Centre Section , Krono, 12mtr, Old Style



IF DESCRIPTION PREFIX IS ASSEMBLY DRAWING ONLY OR PRODUCTION DRAWING ONLY THE ITEM IS NOT FOR SALE			
ITEM	PART NUMBER	DESCRIPTION	QTY
1	GA5074625	DEADBOLT SPRING, SUIT, KRONO, CENTRE SECTION, 18MO0240Z	2
2	GA5011475	SET SCREW M8 X 30 GR8.8 ZP	2
3	GA5001055	WASHER 16mm FLAT SS	2
4	GA5001029	NUT M6 ZP	2
5	GA5074630	SPRING TENSIONER ARM, SUIT, KRONO, 12MT, IZ82PTM000	2
6	GA5003643	WASHER M8 FLAT SS HD	4
7	GA5000275	BOLT M12 X 150 GR8.8 ZP	4
8	GA5025964	CUP SPRING, 12mm, SUIT, KRONO, 05MO0010D	6
9	GA5025965	CABLE, BOOM, SUIT, KRONO, 12-15MT, 08CT1110	1
10	GA5012461	NUT M12 NYLOC ZP	8
11	GA5074600	ORBILAN PLATE, SUIT, KRONO, ROCKER FRAME, I082PLA000	4
12	GA5004917	NUT M8 NYLOC ZP	8
13	GA0500060	HEX SOCKET COUNTERSUNK FLAT HEAD CAP SCREW M8X25 UNI 593310.9	8
14	GA5055535	ISOLATOR, RUBBER, 38 X 25, M8 MALE, FEMALE	2
15	GA5074640	BOOM SUPPORT BRACKET, KRONO, 12MT, IC82APP000	2
16	GA5000141	NUT M10 NYLOC ZP	2
17	GA5000117	WASHER 10mm FLAT SS HD	4
18	GA5075285	WASHER, 1/4", BONDED, SUIT, KRONO, TOWER CYLINDER, 07RO0050	4
19	GA5075290	NIPPLE, 1/4", HYDRAULIC, KRONO, TOWER CYLINDER	4
20	GA5075295	GIGLUER, M8, SUIT, KRONO, ROCKER FRAME CYLINDER, 09GGI000	2

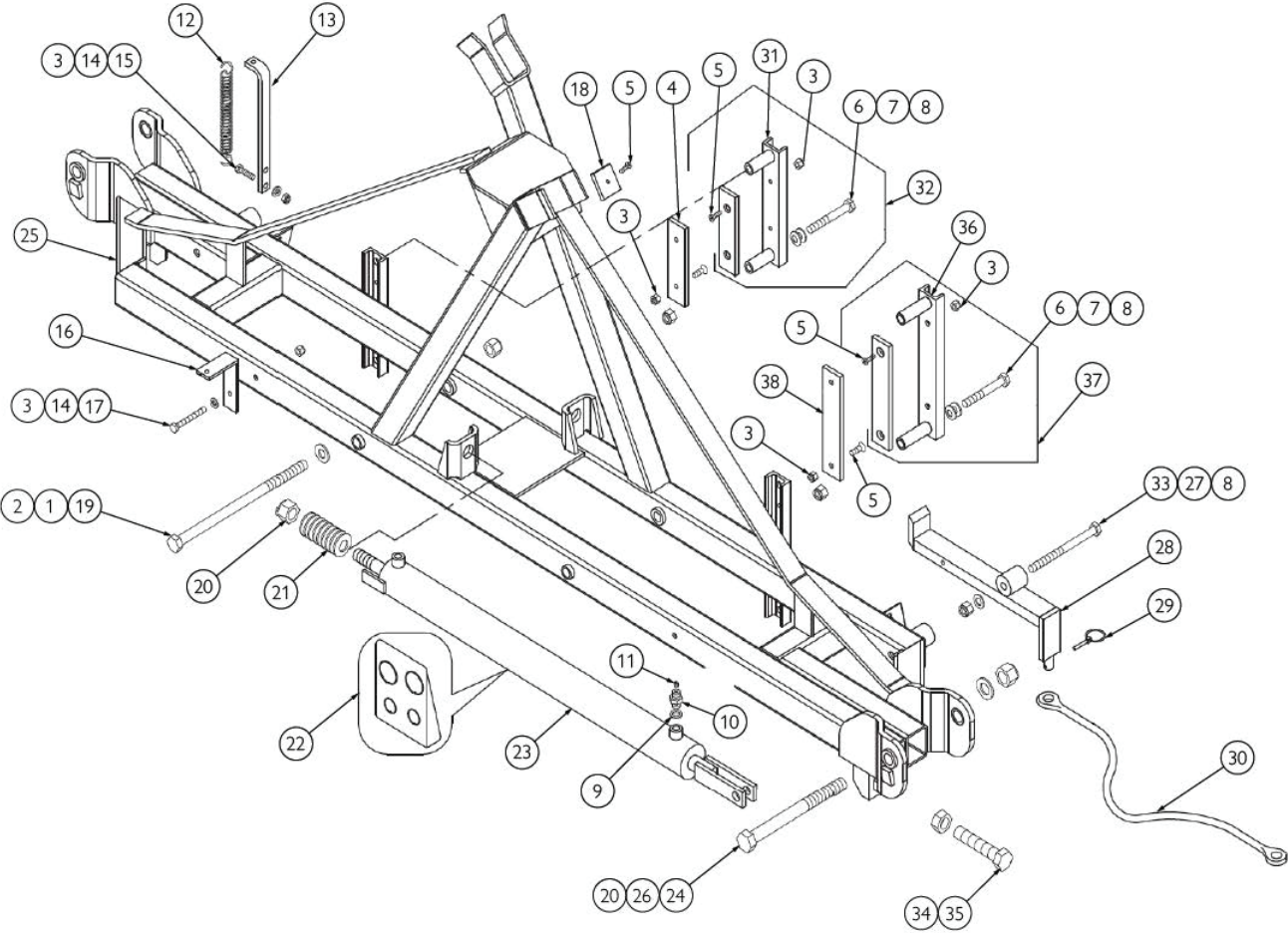
IF DESCRIPTION PREFIX IS ASSEMBLY DRAWING ONLY OR PRODUCTION DRAWING ONLY THE ITEM IS NOT FOR SALE			
ITEM	PART NUMBER	DESCRIPTION	QTY
21	GA5011163	BOLT M10 X 70 GR8.8 ZP	2
22	GA5004437	WASHER 6mm FLAT SS	2
23	GA5004065	BOLT M6 X 20 GR8.8 ZP	2
24	GA5074645	BUSH, TIE ROD, KRONO, 12MT, IZ82BOC000	2
25	GA5000577	WASHER 12mm FLAT SS HD	4
26	GA5000355	BOLT M12 X 80 GR8.8 ZP	2
27	GA5001513	NUT M20 X 1.5P NYLOC ZP	2
28	GA5074650	CENTRAL PORTION BRACKET, SUIT, KRONO, IZ82FEU010	2
29	GA5000275	BOLT M12 X 150 GR8.8 ZP	2
30	GA5074655	LOCKING CABLE, RIGHT SIDE, SUIT, KRONO, 12MT, 08CT1100	2
31	GA5074660	HYDRAULIC CYLINDER, CENTRAL, SUIT, KRONO, 12MT, 15PI0440V	1
32	GA5074665	CUP SPRING, 20mm, SUIT, KRONO, CENTRAL HYDRAULIC CYLINDER, 12MT, 05MO0070D	1
33	GA5050315	BOLT M16 X 260 GR8.8 ZP	2
34	GA5004738	BOLT M8 X 70 GR8.8 ZP	2
35	GA5074670	BRACKET, NOZZLE BODY, SUIT, KRONO, CENTRE SECTION, 12MT, IZ82PRG000	2
36	GA5069220	BOLT M20 X 1.5P X 60 GR8.8 ZP	2
37	GA5078469	BOLT, M20 X 220 GR8.8 ZP	2
38	GA5075470	LINCH PIN, M6, SUIT, KRONO, CENTRE LOCKING ARM, 08OSS000	2
39	GA5074675	BRACKET, LOCKING, SUIT, KRONO, CENTRE SECTION, 12MT, IZ82CAT000	2
40	GA5074980	NUT, M20X1.5, THIN, 05DB0089Z	2

GA7800108	CENTRE SECTION, KRONO, 12MTR, OLD STYLE	REV
GOLDACRES		

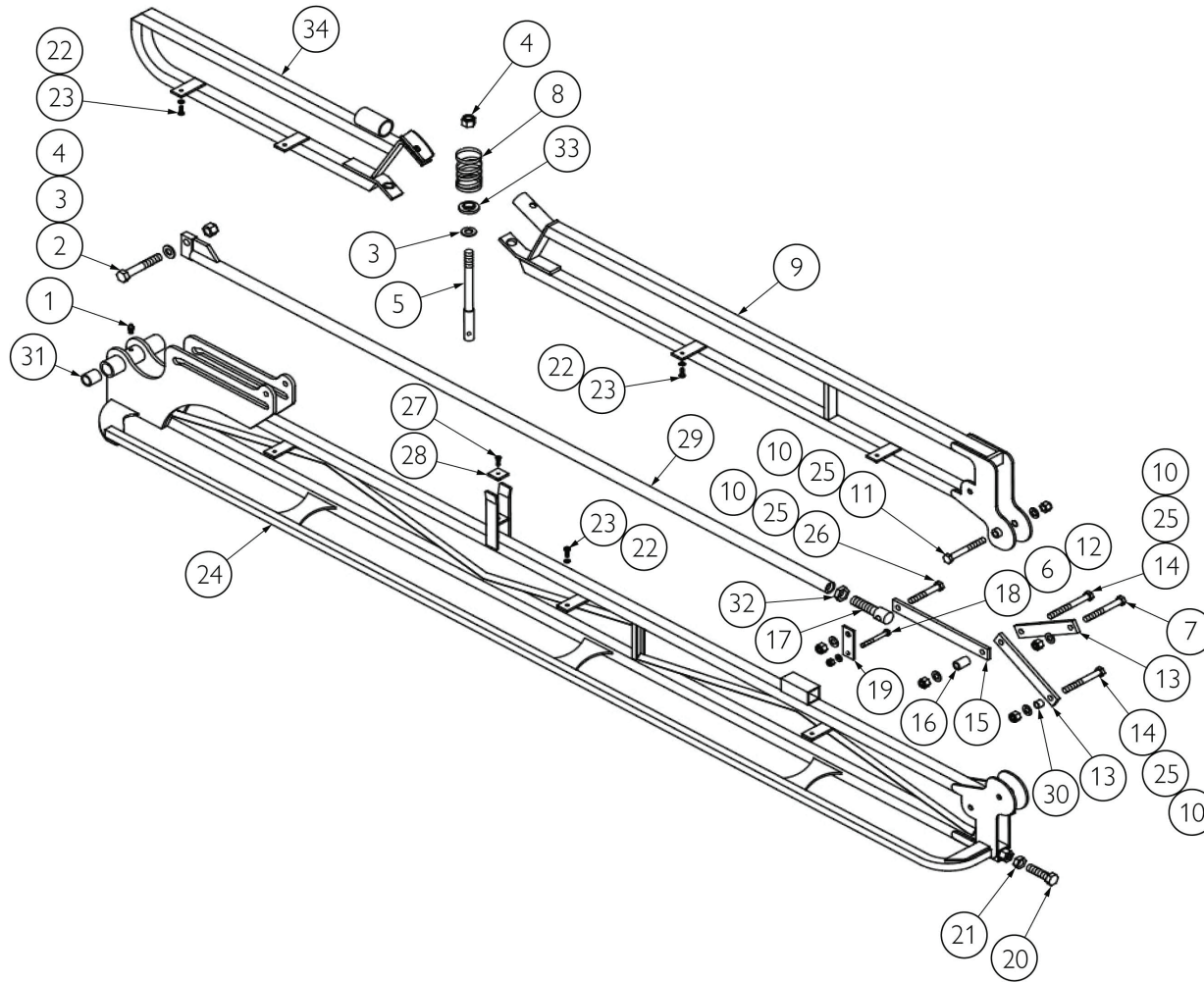



Centre Section, Krono, 12mt, New Style

IF DESCRIPTION PREFIX IS ASSEMBLY DRAWING ONLY OR PRODUCTION DRAWING ONLY THE ITEM IS NOT FOR SALE			
ITEM	PART NUMBER	DESCRIPTION	QTY
1	GA5001043	WASHER 16mm FLAT SS HD	4
2	GA5001029	NUT M16 NYLOC ZP	2
3	GA5052590	NUT M8 NYLOC SS	12
4	GA5074600	ORBILAN PLATE, SUIT, KRONO, ROCKER FRAME, I082PLA000	2
5	GA0500060	HEX SOCKET COUNTERSUNK FLAT HEAD CAP SCREW M8X25 UNI 593310.9	10
6	GA5000259	BOLT M12 X 100 GR8.8 ZP	4
7	GA5000577	WASHER 12mm FLAT SS HD	4
8	GA5012461	NUT M12 NYLOC ZP	4
9	GA5075285	WASHER, 1/4", BONDED, SUIT, KRONO, TOWER CYLINDER, 07RQ0050	4
10	GA5075290	NIPPLE, 1/4", HYDRAULIC, KRONO, TOWER CYLINDER	4
11	GA5075290	NIPPLE, 1/4", HYDRAULIC, KRONO, TOWER CYLINDER	4
12	GA5074625	DEADBOLT SPRING, SUIT, KRONO, CENTRE SECTION, 18MO02407	2
13	GA5074630	SPRING TENSIONER ARM, SUIT, KRONO, 12MT, I782PTM000	2
14	GA5003643	WASHER 8mm FLAT SS HD	4
15	GA5011475	BOLT M8 X 30 GR8.8 ZP	2
16	GA5074670	BRACKET, NOZZLE BODY, SUIT, KRONO, CENTRE SECTION, 12MT, I782PRG000	2
17	GA5004738	BOLT M8 X 70 GR8.8 ZP	2
18	GA5078726	ORBILAN PLATE, 50X50MM, SUIT, KRONO CENTRE SECTION, 12MT, I082PLA030	2
19	GA5000917	BOLT M16 X 300 GR8.8 ZP	2
20	GA5001513	NUT M20 X 1.5P NYLOC ZP	4
21	GA5074665	CUP SPRING, 20mm, SUIT, KRONO, CENTRAL HYDRAULIC CYLINDER, 12MT, 05MO0070D	2
22	GA3501263	KIT REPIAR, SUIT, KRONO, HYDRAULIC CYLINDER, GA3501264, 15PI0440G	1
23	GA3501264	HYDRAULIC CYLINDER, KRONO, SUIT, CENTRE SECTION, 12MT, I082PIS000	2
24	GA5078469	BOLT, M20 X 220 GR8.8 ZP	2
25	GA5001741	WASHER 20mm FLAT SS HD	4
26	GA5001741	WASHER 20mm FLAT SS HD	
27	GA5000577	WASHER 12mm FLAT SS HD	4
28	GA5074675	BRACKET, LOCKING, SUIT, KRONO, CENTRE SECTION, 12MT, I782CAT000	2
29	GA5075470	LINCH PIN, M6, SUIT, KRONO, CENTRE LOCKING ARM, 08OSS000	2
30	GA5074655	LOCKING CABLE, RIGHT SIDE, SUIT, KRONO, 12MT, 08CTI100	1
	GA5078728	LOCKING CABLE, "LH", SUIT, KRONO, CENTRE SECTION, 08CTI105	1
31	GA5074650	CENTRAL PORTION BRACKET, SUIT, KRONO, I782FEU010	1
32	GA5078732	CLUTCH PLATE ASSY, 220mm, SUIT, KRONO, CENTRE SECTION, I782FEU001	1
33	GA5000275	BOLT M12 X 150 GR8.8 ZP	2
	GA5011223	BOLT M12 X 200 GR 8.8 ZP	2
34	GA5074980	NUT, M20X1.5, THIN, 05DB0089Z	4
35	GA5069220	BOLT M20 X 1.5P X 60 GR8.8 ZP	2
36	GA5078729	BRACKET, CLUTCH PLATE, 270MM, SUIT, KRONO, 12MT, CENTRE SECTION, I782FEU020	1
37	GA5078730	CLUTCH PLATE ASSY, 270mm, SUIT, KRONO, CENTRE SECTION, I782FEU021	1
38	GA5078731	ORBILAN PLATE, L=220, SUIT, KRONO, CENTRE SECTION, I082PLA020	2
GA7800128		CENTRE SECTION, "NEW STYLE", KRONO, 12MT	REV 00
			



Boom Wings, Krono, 12mtr

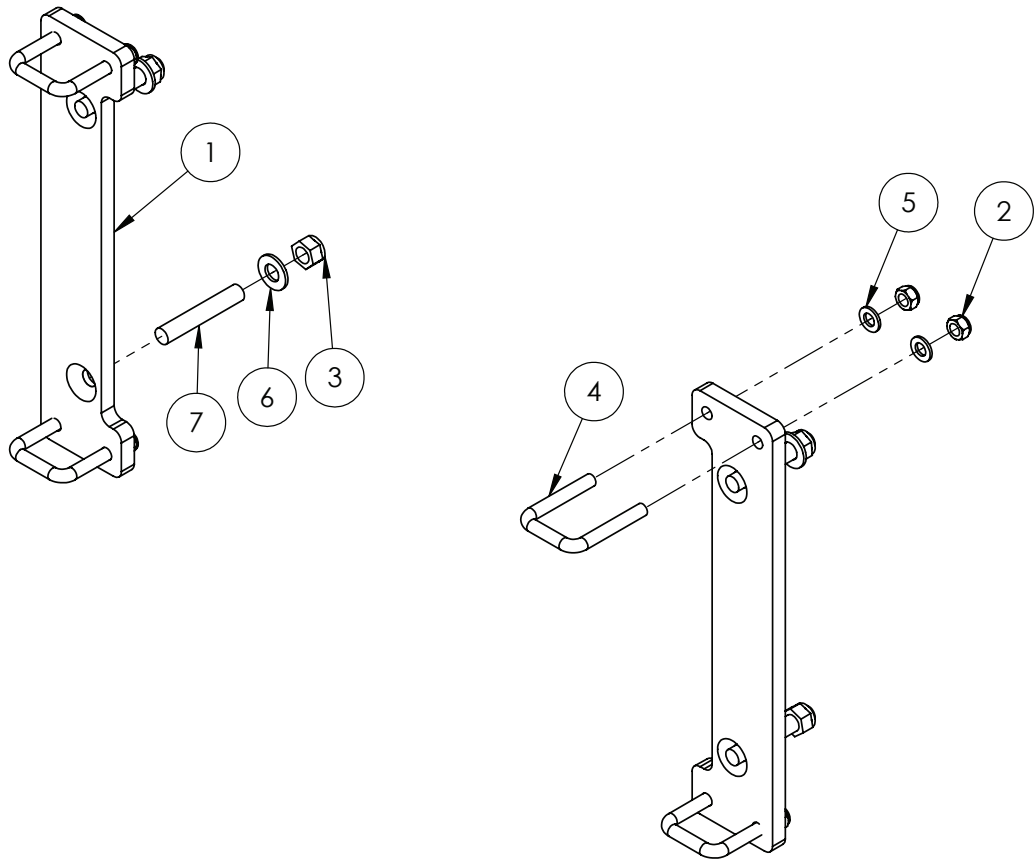



IF DESCRIPTION PREFIX IS ASSEMBLY DRAWING ONLY OR PRODUCTION DRAWING ONLY THE ITEM IS NOT FOR SALE			
ITEM	PART NUMBER	DESCRIPTION	QTY
1	GA5053405	NIPPLE GREASE 8mm STRAIGHT	2
2	GA5011269	BOLT M16 X 100 GR8.8 ZP	2
3	GA5001043	WASHER M16 FLAT SS HD	4
4	GA5001029	NUT M16 NYLOC ZP	4
5	GA5074690	PIN, EXTENSION JOINT, SUIT, KRONO, 12MT, 20PE0450Z	2
6	GA5003643	WASHER M8 FLAT SS HD	4
7	GA5000259	BOLT M12 X 100 GR8.8 ZP	2
8	GA5075475	SPRING, EXTENSION, SUIT, KRONO BOOM, 12MT, 18MO0250Z	2
9	GA5074695	BOOM WING, OUTER, KRONO, 12MT, IC82SEM10D	1
	GA5078725	BOOM WING, OUTER, KRONO, LH, 12MT, IC82SEM10S	1
10	GA5012461	NUT M12 NYLOC ZP	8
11	GA5011263	BOLT M12 X 90 GR8.8 ZP	2
12	GA5004917	NUT M8 NYLOC ZP	2
13	GA5074700	BRACKET, FOLD LEVER, BOOM WING, KRONO, 12MT, IZ82LEV000	8
14	GA5011199	BOLT M12 X 110 GR8.8 ZP	4
15	GA5074705	BRACKET, FOLD LEVER CONNECTOR, BOOM WING, KRONO, 12MT, IZ82LEV010	4
16	GA5074710	SPACER BUSH, L=30, SUIT, KRONO, 12MT, 09GB0100Z	2
17	GA5074715	ADJUSTER PIN, TIE ROD, SUIT, KRONO, 12MT, 20PE0460Z	2
18	GA5004738	BOLT M8 X 70 GR8.8 ZP	2
19	GA5074720	GUIDE PLATE, TIE ROD, SUIT, KRONO, 12MT, IZ82GUI000	4
20	GA5011287	SET SCREW M16 X 40 GR 8.8 ZP	2
21	GA5049930	NUT M16 LOCK ZP	2
22	GA5004437	WASHER 6mm FLAT SS	14
23	GA5004065	BOLT M6 X 20 GR8.8 ZP	14
24	GA5074725	BOOM WING, RH, INNER, KRONO, 12MT, IC82INT20D	1
	GA5025948	BOOM WING, LH, INNER, KRONO, 12MT, IC82INT20S	1
25	GA5000577	WASHER 12mm FLAT SS HD	8
26	GA5000355	BOLT M12 X 80 GR8.8 ZP	2
27	GA5078419	SCREW, COUNTERSINK, ALLEN SCREW, M6 X 12, 05VT0060Z	2
28	GA5074730	ORBILAN PLATE, L=30, SUIT, KRONO, BOOM REST, I082PLA010	2
29	GA5074735	TIE ROD, FOLDING, SUIT, KRONO, 12MT, IC82TIR000	2
30	GA5074740	SPACER BUSH, L=13, SUIT, KRONO, 12MT, 13BO0630Z	4
31	GA5074745	BUSH, SELF LUBRICATING, 20X28X30, SUIT, KRONO, 12MT, 13BO0343	4
32	GA5001725	NUT M20 SS	2
33	GA5074750	WASHER, NYLON, SUIT, KRONO BOOM, 12URC000	2
34	GA5074755	BOOM, BREAKAWAY, KRONO, 12MT, IC82PRO10D	1
GA7800109		BOOM WINGS, KRONO, 12MTR	REV 00
 GOLDACRES			



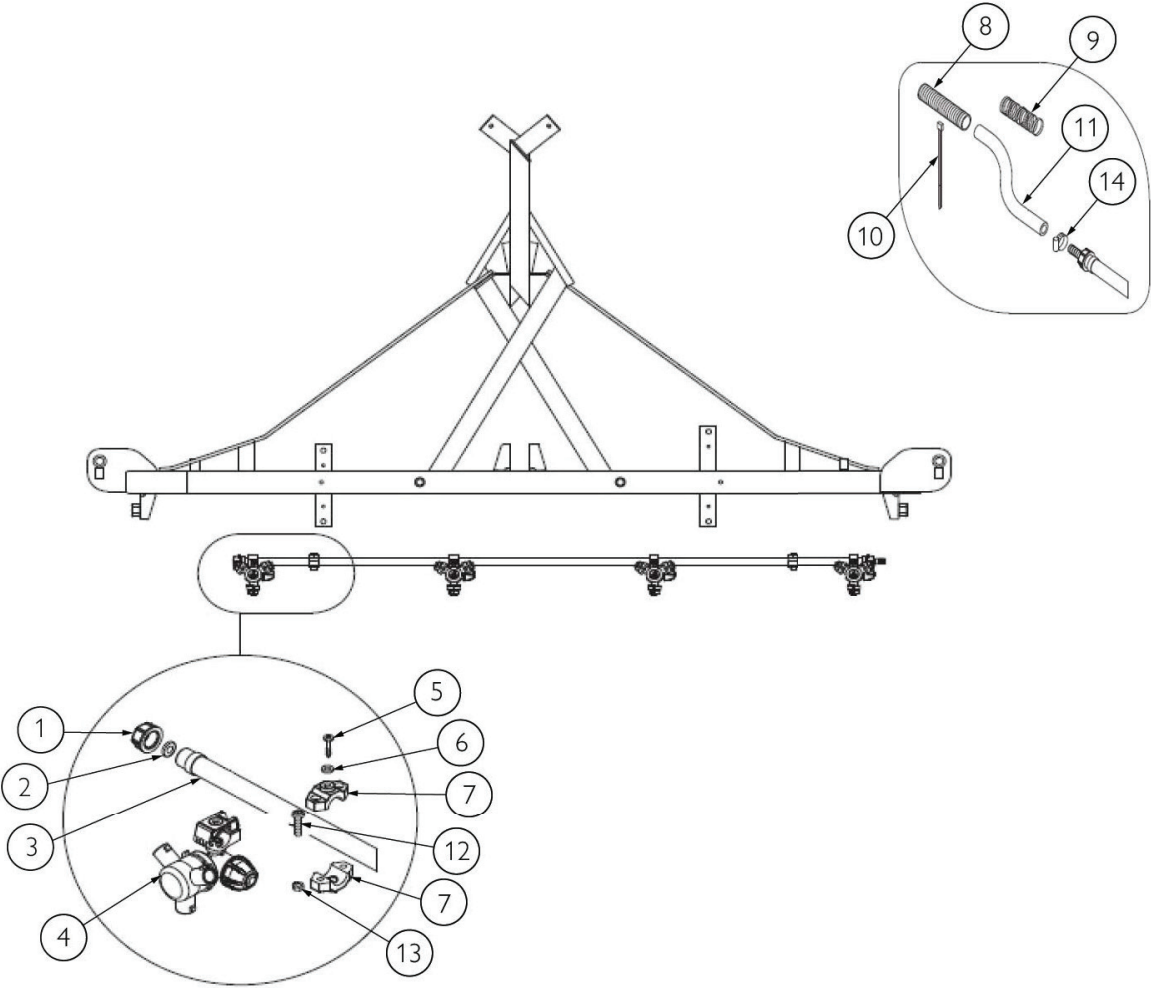
Mounting Brackets, Boom Centre

OPTIONAL PARTS			
ITEM	PART NUMBER	DESCRIPTION	QTY
-	GA1100066	SALES KIT, MOUNTING HARDWARE, KRONO BOOM TO 3PL	-



IF DESCRIPTION PREFIX IS ASSEMBLY DRAWING ONLY OR PRODUCTION DRAWING ONLY THE ITEM IS NOT FOR SALE			
ITEM	PART NUMBER	DESCRIPTION	QTY
1	GA4600580	3PL, KRONO VERTICAL FOLD BOOM MOUNT	2
2	GA5012461	NUT M12 NYLOC ZP	8
3	GA5001029	NUT M16 NYLOC ZP	4
4	GA5011251	U BOLT SQUARE TOP M12 X 52mm X 80mm	4
5	GA5000577	WASHER 12mm FLAT SS HD	8
6	GA5001043	WASHER 16mm FLAT SS HD	4
7	GA5024600	BOLT M16 X 95 GR8.8 BLACK HEADLESS 40mm THREAD	4
GA7800111		BOOM MOUNT KIT, KRONO VERTICAL FOLD	REV 00
 GOLDACRES			

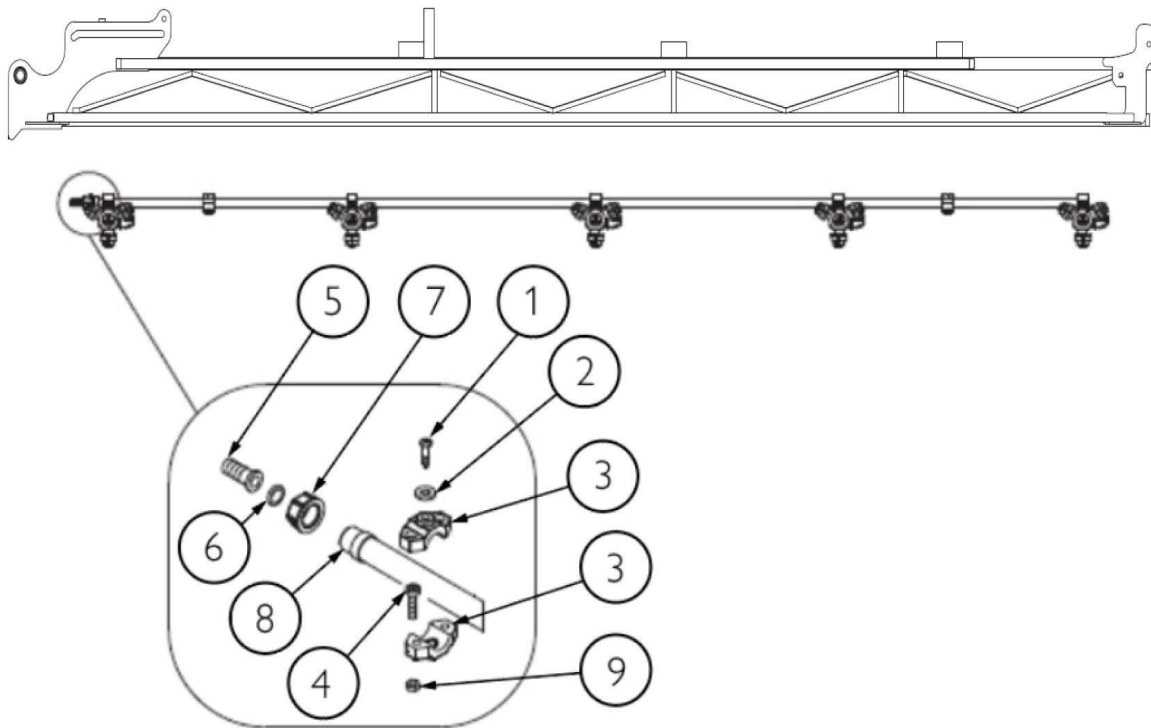
Boom Plumbing Line, Krono, Centre Section, 12mtr



IF DESCRIPTION PREFIX IS ASSEMBLY DRAWING ONLY OR PRODUCTION DRAWING ONLY THE ITEM IS NOT FOR SALE			
ITEM	PART NUMBER	DESCRIPTION	QTY
1	GA5074815	END CAP, 1/2", SUIT, KRONO, 02ATA001	2
2	GA5074820	GASKET, SUIT, 1/2" END CAP, KRONO, I060ASM540	2
3	GA5074760	PLUMBING LINE, BOOM, CENTRE SECTION, SUIT, KRONO, 12MT, I060ASM540	1
4	GA5077969	NOZZLE BODY, TRIPLE, TRIJET, CLOCK FACE, 1/2, TEEJET, QJ363C-1/2-NYB	4
5	GA5004041	BOLT M6 X 16 GR8.8 ZP	12
6	GA5004437	WASHER 6mm FLAT SS	4
7	GA5074765	MOUNTING CLAMP, 1/2", SUIT, KRONO, BOOM LINE	8
8	GA5074770	SHEATH, 28mm, SUIT, KRONO, 03AGU001	4
9	GA5074775	SPIRAL GUARD, 44X50, SUIT, KRONO, 08DSP007	4
10	GA5004455	CABLE TIES BLACK 190 X 4.5 mm [C]	-
11	GA2000211	HOSE, PRESSURE, 12mm, BLACK, 250PSI, HOS13P	-
12	GA5004055	SHCS M6 X 20 GR12.9 ZP	6
13	GA5004397	NUT M6 ZP	6
14	GA5000469	HOSE CLAMP, 1/2" SS 12-20/9W3	4
GA7800112		BOOM PLUMBING LINE, KRONO, CENTRE SECTION, 12MTR	REV 00

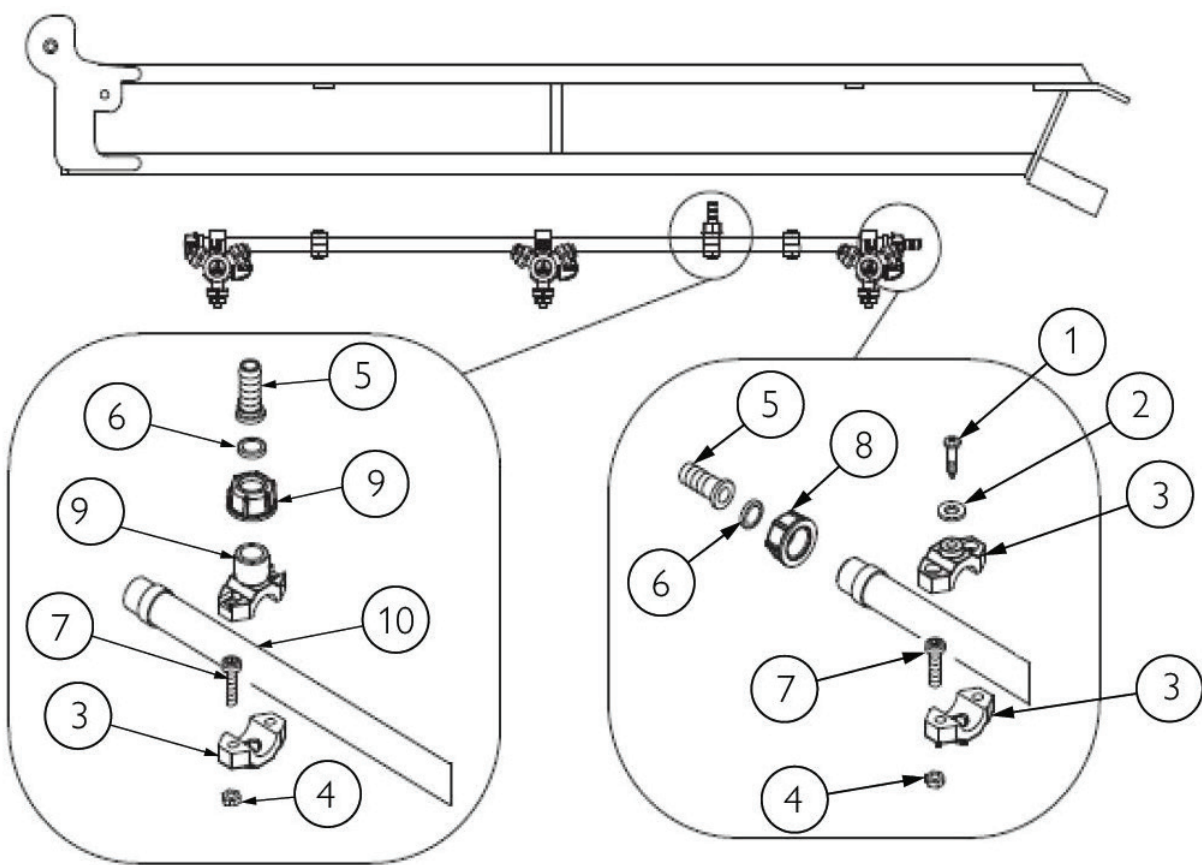


Boom Plumbing Line, Krono, Inner 12mtr, 5 Section



IF DESCRIPTION PREFIX IS ASSEMBLY DRAWING ONLY OR PRODUCTION DRAWING ONLY THE ITEM IS NOT FOR SALE			
ITEM	PART NUMBER	DESCRIPTION	QTY
1	GA5004041	BOLT M6 X 16 GR8.8 ZP	6
2	GA5004437	WASHER 6mm FLAT SS	6
3	GA5074765	MOUNTING CLAMP, 1/2", SUIT, KRONO, BOOM LINE	12
4	GA5004055	SHCS M6 X 20 GR12.9 ZP	20
5	GA5074780	HOSE TAIL, FLAT SEAT, 13mm, KRONO, 02ARD002	2
6	GA5074785	GASKET, SUIT, FLAT SEAT, HOSE BARB, 1/2", KRONO, 02AOR005	2
7	GA5074790	FLY NUT, SUIT, 13mm, HOSE BARB, KRONO, 02AGI002	2
8	GA5074795	PLUMBING LINE, BOOM, INNER WING, SUIT, 12MT, KRONO, 1060AST550	2
9	GA5004397	NUT M6 ZP	20
GA7800113 GOLDACRES		BOOM PLUMBING LINE, KRONO, INNER, 12MTR	REV 00

Boom Plumbing Line, Krono, Outer 12mtr

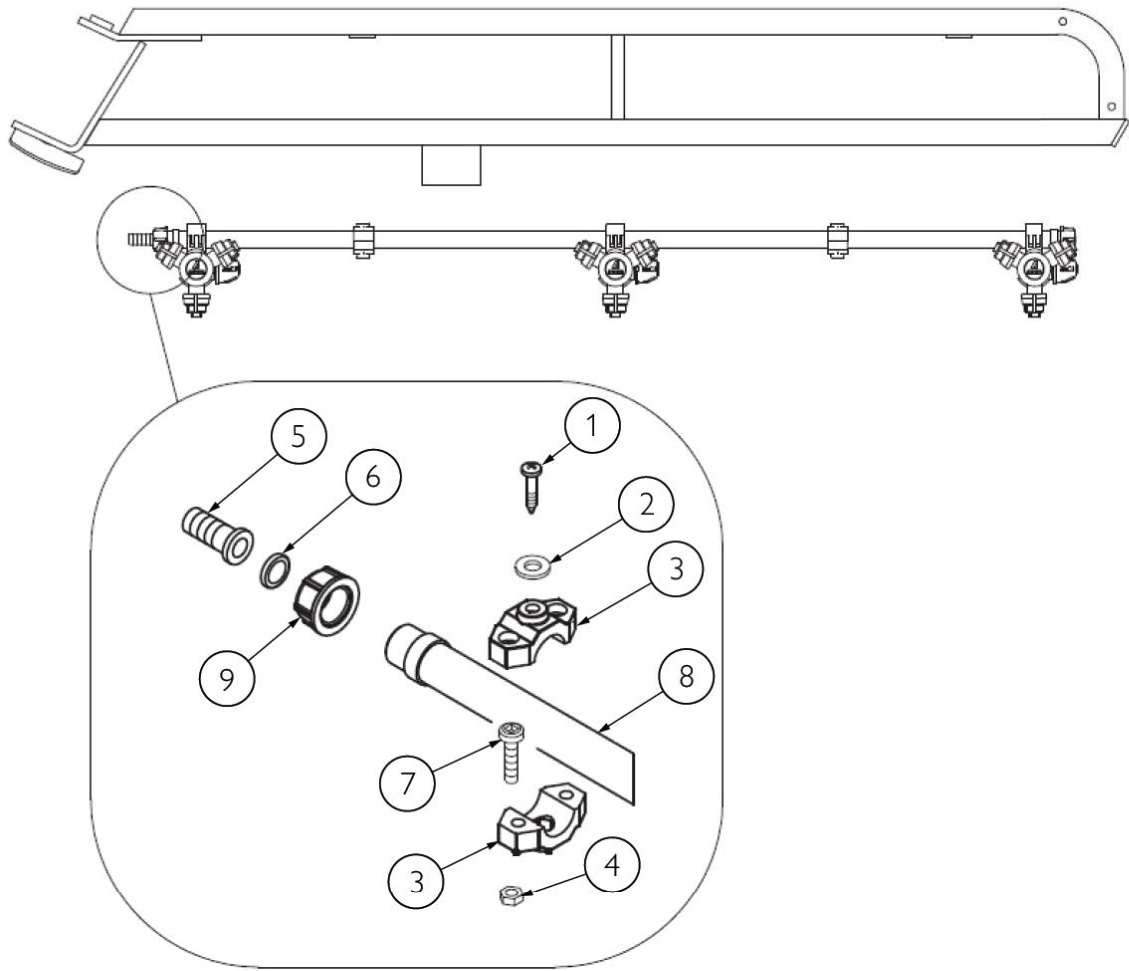


IF DESCRIPTION PREFIX IS ASSEMBLY DRAWING ONLY OR PRODUCTION DRAWING ONLY THE ITEM IS NOT FOR SALE			
ITEM	PART NUMBER	DESCRIPTION	QTY
1	GA5004041	BOLT M6 X 16 GR8.8 ZP	6
2	GA5004437	WASHER 6mm FLAT SS	6
3	GA5074765	MOUNTING CLAMP, 1/2", SUIT, KRONO, BOOM LINE	10
4	GA5004397	NUT M6 ZP	6
5	GA5074780	HOSE TAIL, FLAT SEAT, 13mm, KRONO, 02ARD002	2
6	GA5074785	GASKET, SUIT, FLAT SEAT, HOSE BARB, 1/2", KRONO, 02AOR005	2
7	GA5004055	SHCS M6 X 20 GR12.9 ZP	12
8	GA5074790	FLY NUT, SUIT, 13mm, HOSE BARB, KRONO, 02AGI002	4
9	GA5074800	UPPER POLY CLAMP, SUIT, FLAT SEAT, HOSE BARB, 1/2", 02ACA008	2
10	GA5074805	PLUMBING LINE, BOOM, OUTER WING, SUIT, 12MT, KRONO, I082AST530	2
GA7800114		BOOM PLUMBING LINE, KRONO, OUTER, 12MTR	REV 00



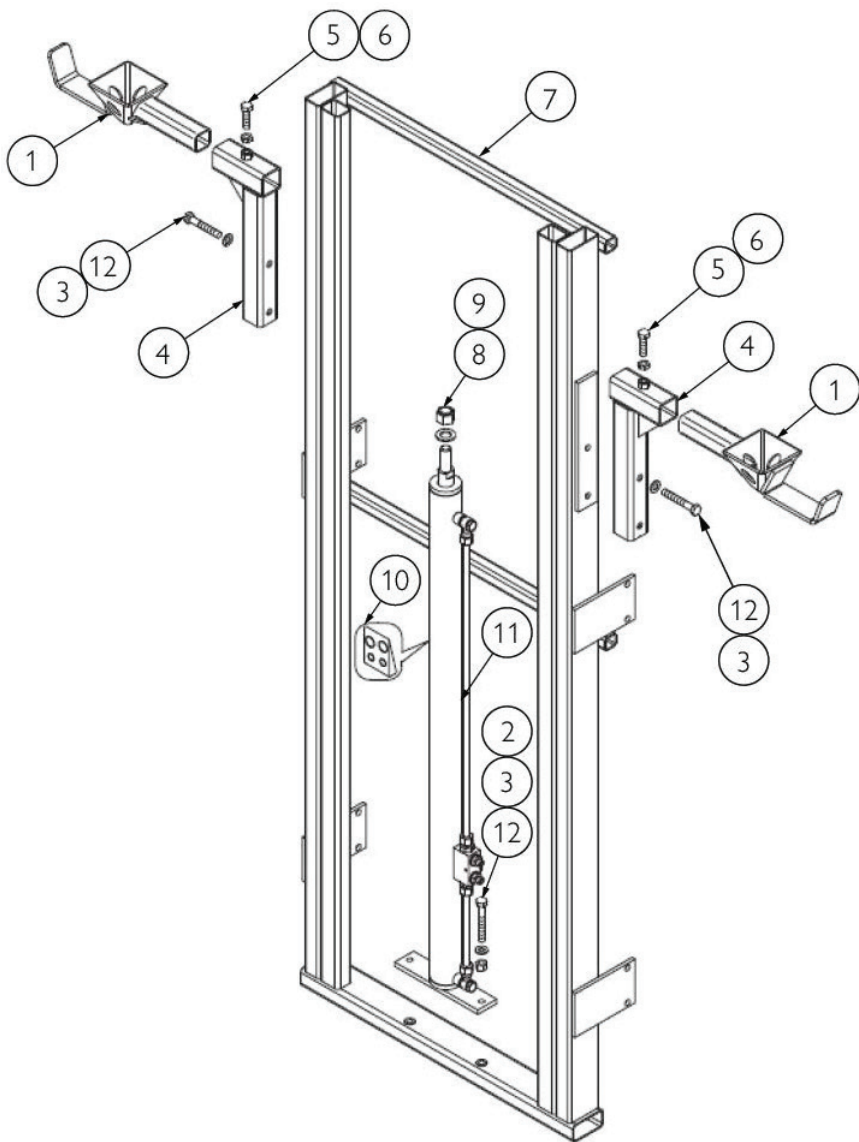



Boom Plumbing Line, Krono, Breakaway, 12mtr



IF DESCRIPTION PREFIX IS ASSEMBLY DRAWING ONLY OR PRODUCTION DRAWING ONLY THE ITEM IS NOT FOR SALE			
ITEM	PART NUMBER	DESCRIPTION	QTY
1	GA5004050	BHCS M6 X 16 SS A2-70	4
2	GA5004437	WASHER 6mm FLAT SS	4
3	GA5074765	MOUNTING CLAMP, 1/2", SUIT, KRONO, BOOM LINE	8
4	GA5000559	NUT M12 HEX ZP	10
5	GA5074780	HOSE TAIL, FLAT SEAT, 13mm, KRONO, 02ARD002	2
6	GA5074785	GASKET, SUIT, FLAT SEAT, HOSE BARB, 1/2", KRONO, 02AOR005	2
7	GA5004055	SHCS M6 X 20 GR12.9 ZP	10
8	GA5074810	PLUMBING LINE, BOOM , BREAKAWAY OUTER, SUIT, 12MT, KRONO, I060AST520	2
9	GA5074790	FLY NUT, SUIT, 13mm, HOSE BARB, KRONO, 02AGI002	2
GA7800115		BOOM PLUMBING LINE, KRONO, BREAKAWAY, 12MT	REV 00

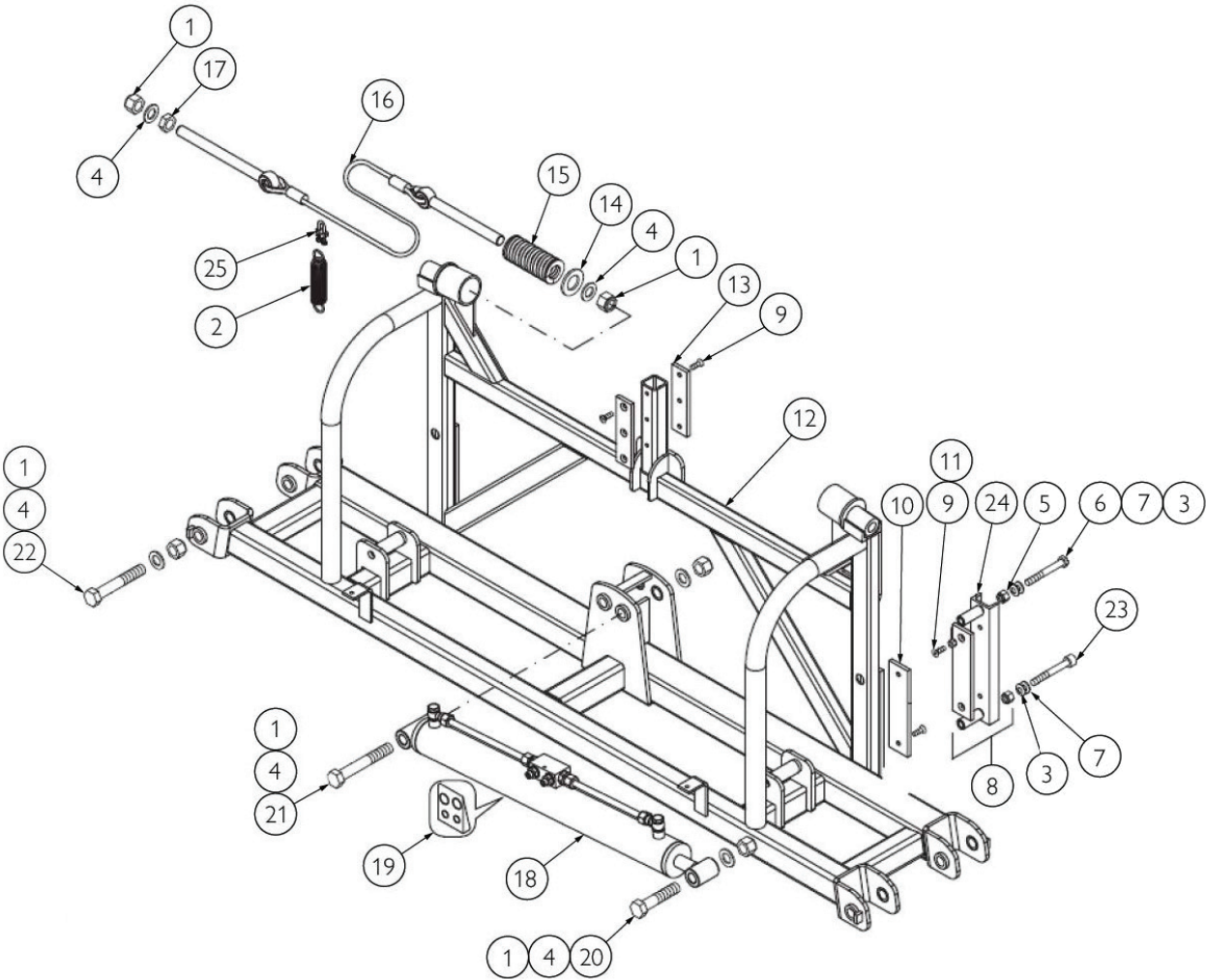
Tower Assembly, IMM, Krono Delta, 15mtr



IF DESCRIPTION PREFIX IS ASSEMBLY DRAWING ONLY OR PRODUCTION DRAWING ONLY THE ITEM IS NOT FOR SALE			
ITEM	PART NUMBER	DESCRIPTION	QTY
1	GA5074825	BOOM REST, TOWER ARM, SUIT, KRONO DELTA, 15MT, IC58CNF010	2
2	GA5012461	NUT M12 NYLOC ZP	2
3	GA5000577	WASHER 12mm FLAT SS HD	6
4	GA5074835	SUPPORT BRACKET, BOOM REST, SUIT, KRONO DELTA, 15MT, IC58APS000	2
5	GA5000319	SET SCREW M12 X 40 GR8.8 ZP	2
6	GA5000559	NUT M12 HEX ZP	2
7	GA5074840	TOWER FRAME, SUIT, KRONO DELTA, 15MT, IC58SLV000	1
8	GA5001513	NUT M20 X 1.5P NYLOC ZP	1
9	GA5001741	WASHER 20mm FLAT SS HD	1
10	GA5074845	REPAIR KIT, HYDRAULIC CYLINDER, LIFT, KRONO DELTA TOWER, 15MT, 15PI0575G	-
11	GA5074850	HYDRAULIC CULINDER, SUIT, KRONO DELTA, TOWER, 15MT, IO58PIS000	1
12	GA5000347	BOLT M12 X 70 GR8.8 ZP	2
GA7800117		TOWER ASSY, SUIT, IMM KRONO DELTA, 15MT	REV 00
 GOLDACRES			

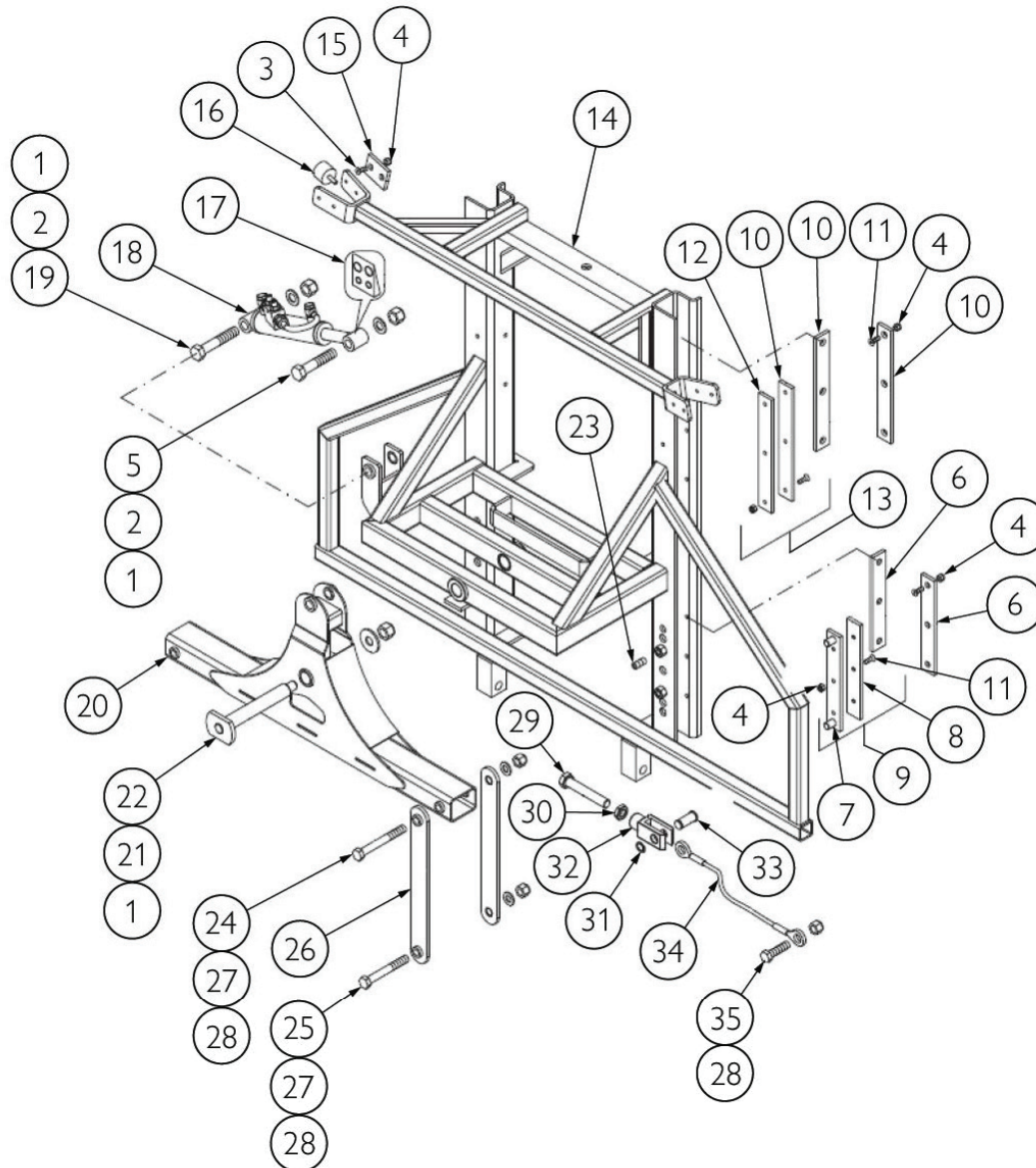


Centre Section, IMM, Krono Delta, 15mt



IF DESCRIPTION PREFIX IS ASSEMBLY DRAWING ONLY OR PRODUCTION DRAWING ONLY THE ITEM IS NOT FOR SALE			
ITEM	PART NUMBER	DESCRIPTION	QTY
1	GA5048125	NUT M20 NYLOC COARSE ZP	6
2	GA5074830	SPRING, SUIT, KRONO CABLE, DELTA, 15MT, I058APS000	2
3	GA5000577	WASHER 12mm FLAT SS HD	4
4	GA5001741	WASHER 20mm FLAT SS HD	6
5	GA5012461	NUT M12 NYLOC ZP	4
6	GA5011263	BOLT M12 X 90 GR8.8 ZP	2
7	GA5000575	WASHER 12mm SPRING SS	4
8	GA5074855	CENTRAL CLUTCH, COMPLETE ASSY, SUIT, KRONO DELTA, 15MT, IZ58FEU001	2
9	GA0500060	HEX SOCKET COUNTERSUNK FLAT HEAD CAP SCREW M8X25 UNI 593310.9	12
10	GA5074860	ORBILAN PLATE, 50X8X200 F8,75, KRONO DELTA, I058PLA030	4
11	GA5011499	NUT M8 ZP	8
12	GA5074865	CENTRE SECTION, KRONO DELTA, 15MT, IC58CEN000	1
13	GA5074870	ORBILAN PLATEM 40X8X150, F8 75, I058PLA0020	2
14	GA5074875	WASHER, CHAMFERED, M25, HV100, KRONO DELTA, 05RO0178Z	2
15	GA5074880	SPRING, SHOCK ABSORBING, SUIT, KRONO DELTA, 15MT, 18MO0290	2
16	GA5074885	CABLE, BOOM, SUIT, KRONO DELTA, 15MT, I058FNE000	2
17	GA5001709	NUT M20 COARSE ZP	2
18	GA4604260	HYDRAULIC CYLINDER, "RH" SUIT, IMM, KRONO DELTA, CENTRE SECTION, 15MT, I058PIS01D	1
	GA3501265	HYDRAULIC CYLINDER, "LH" SUIT, IMM, KRONO DELTA, CENTRE SECTION, 15MT, I058PIS01S	1
19	GA5074890	REPAIR KIT, HYDRAULIC CYLINDER, TILT, KRONO DELTA, 15MT, 15PI0580G	-
20	GA5048355	BOLT M20 X 100 GR8.8 ZP	2
21	GA5001531	BOLT M20 X 150 GR8.8 ZP	2
22	GA0500086	BOLT, M20 X 130mm, GR8.8 ZP	4
23	GA5049375	COACH BOLT M12 X 90 ZP	2
24	GA5075000	BRACKET, CENTRAL CLUTCH, KRONO DELTA, 15MT, IC82PRO10D	2
25	GA5078627	CLAMP, CABLE, M10, SUIT, KRONO DELTA, CENTRE LEVEL CABLE, 08AMO011	2
GA7800118		CENTRE SECTION, IMM, KRONO (DELTA), 15MTR	REV 00

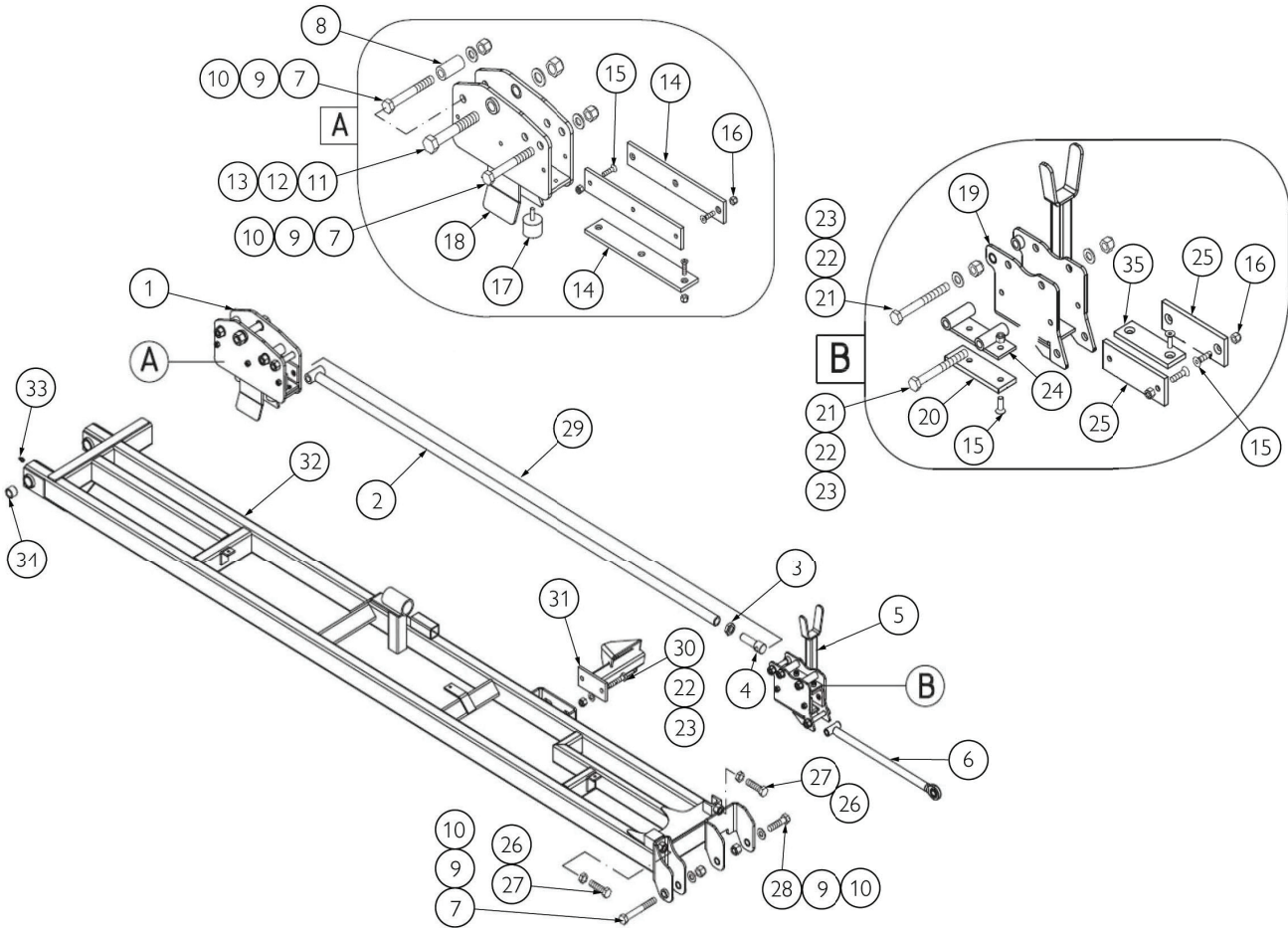
Rocker Frame, IMM, Krono Delta, 15mt



IF DESCRIPTION PREFIX IS ASSEMBLY DRAWING ONLY OR PRODUCTION DRAWING ONLY THE ITEM IS NOT FOR SALE			
ITEM	PART NUMBER	DESCRIPTION	QTY
1	GA5001513	NUT M20 X 1.5P NYLOC ZP	3
2	GA5001741	WASHER 20mm FLAT SS HD	4
3	GA0500060	HEX SOCKET COUNTERSUNK FLAT HEAD CAP SCREW M8X25 UNI 593310.9	8
4	GA5011499	NUT M8 ZP	36
5	GA5048355	BOLT M20 X 100 GR8.8 ZP	1
6	GA5074895	ORBILAN PLATE, 40X8X250, F8 75, KRONO DELTA, I058PLA050	4
7	GA5074900	BRACKET, LIFTING SHOE, SUIT, KRONO DELTA, 15MT, I758PAT000	2
8	GA5074905	ORBILAN PLATE, LIFTING BRACKET, 40X8X250, F8, 75, I058PLA110	2
9	GA5074910	KIT, ORBILAN PLATE, UPPER, SUIT, KRONO DELTA, 15MT, I758PAT001	2
10	GA5074915	ORBILAN PLATE, 40X80X300, F8, 75, SUIT, KRONO DELTA, 15MT, I058PLA060	6
11	GA0500060	HEX SOCKET COUNTERSUNK FLAT HEAD CAP SCREW M8X25 UNI 593310.9	36
12	GA5074920	BRACKET, ORBILAN PLATE, SUIT, KRONO DELTA, 15MT, I758PTA001	2
13	GA5074925	KIT, ORBILAN PLATE, LOWER, LIFTING, SUIT, KRONO, 15MT, IC58BIL000	2
14	GA5074930	BOOM LIFT, CENTRE FRAME, KRONO DELTA, 15MT, IC58BIL000	1
15	GA5074935	ORBILAN PLATE, 50X8X70, F8, 75, SUIT, KRONO DELTA, I058PLA040	4
16	GA5055535	ISOLATOR, RUBBER, 38 X 25, M8 MALE, FEMALE	2
17	GA5074940	REPAIR KIT, HYDRAULIC CYLINDER, ROCKER ARM, KRONO DELTA, 15PI0585G	-
18	GA5074945	HYDRAULIC CYLINDER, ROCKER ARM, COMPLETE, KRONO DELTA, I058PIS020	1
19	GA5048355	BOLT M20 X 100 GR8.8 ZP	2
20	GA5074950	STABILIZER, ROCKER ARM, KRONO DELTA, 15MT, IC58STR000	1
21	GA5074955	WASHER, M20X47X3, HV100, SUIT, KRONO DELTA, ROCKER PIN, 05RO0050Z	1
22	GA5074960	PIN, ROCKER ARM, SUIT, KRONO DELTA, IZ58PER000	1
23	GA5074965	GRUB SCREW, 14X40, 45H, SUIT, KRONO DELTA, 05GRA060Z	4
24	GA5000871	BOLT M16 X 160 GR8.8 ZP	2
25	GA5000869	BOLT M16 X 150 GR8.8 ZP	2
26	GA5074970	BRACKET, CONNECTING LEVER, SUIT, KRONO DELTA, 15MT, I758LEV000	4
27	GA5001055	WASHER 16mm FLAT SS	8
28	GA5001029	NUT M16 NYLOC ZP	8
29	GA5074975	BOLT, M20X1.5X120, GR8.8, UNI5737, 05TEA779Z	2
30	GA5074980	NUT, M20X1.5, THIN, 05DB0089Z	2
31	GA5074985	RETAINING CLIP, M20, UNI7435, 05SE0030Z	2
32	GA5074990	CLEVIS FORK, M20X1.5, SUIT, KRONO DELTA, 15MT, 21FO0010Z	2
33	GA5074995	CLEVIS PIN, M20, 20FER010Z	2
34	GA5078628	CABLE, LOCKING, SUIT, IMM, KRONO DELTA, 15MT, 08CTI022	2
35	GA5000941	BOLT M16 X 60 GR8.8 ZP	2
GA7800119		ROCKER FRAME, CENTRE SECTION, IMM KRONO (DELTA), 15MTR	REV 00

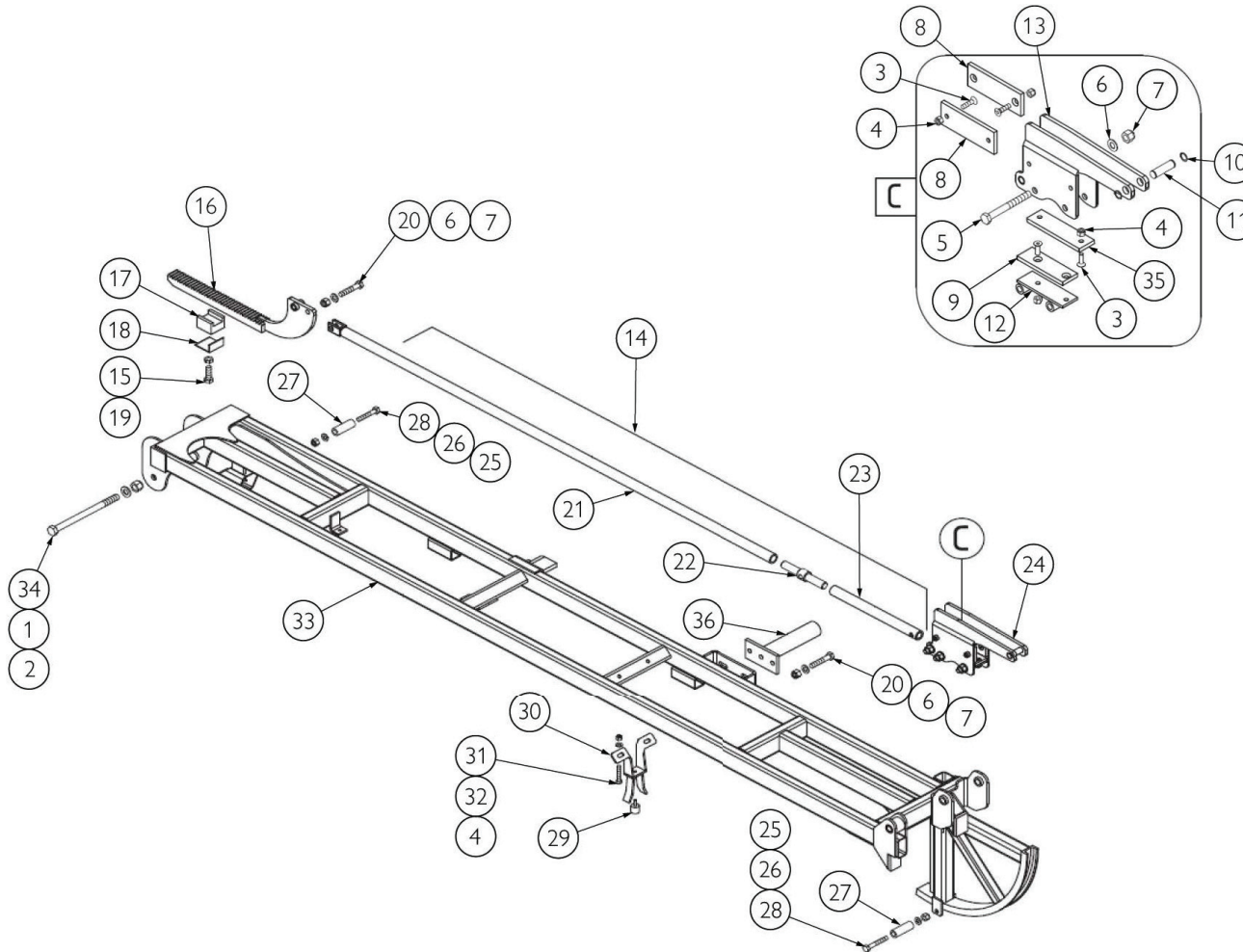


Boom Wing, Inner, IMM, Krono Delta, 15mt



IF DESCRIPTION PREFIX IS ASSEMBLY DRAWING ONLY OR PRODUCTION DRAWING ONLY THE ITEM IS NOT FOR SALE			
ITEM	PART NUMBER	DESCRIPTION	QTY
1	GA5078678	CENTRAL SLIDE ASSY, SUIT, KRONO DELTA, 15MT, IZ58SLT001	2
2	GA5078679	TIE ROD, BOOM WING INNER, SUIT, IMM, KRONO DELTA, 15MT, IZ58TIR100	2
3	GA5001725	NUT M20 SS	2
4	GA5078680	ROD END, PIVOT, SUIT, IMM, KRONO DELTA, TIE ROD, 15MT, IZ58SLT011	2
5	GA5078681	SLIDE KIT ASSY, OUTER OF INNER BOOM WING, "RH", IMM, KRONO DELTA, 15MT, IZ58SLT011	1
	GA5078682	SLIDE KIT ASSY, OUTER OF INNER BOOM WING, "LH", IMM, KRONO DELTA, 15MT, IZ58SLT031	1
6	GA5078683	SWIVEL JOINT, INNER WING, IMM, KRONO DELTA, 15MT, IZ58TIR020	2
7	GA5000855	BOLT M16 X 110 GR8.8 ZP	6
8	GA5078684	SWIVEL JOINT, INNER WING, IMM, KRONO DELTA, 15MT, IZ58TIR020	4
9	GA5001043	WASHER 16mm FLAT SS HD	8
10	GA5001029	NUT M16 NYLOC ZP	8
11	GA5048110	BOLT M20 X 120 GR8.8 ZP	2
12	GA5001741	WASHER 20mm FLAT SS HD	2
13	GA5048125	NUT M20 NYLOC COARSE ZP	2
14	GA5078685	ORBILAN PLATE, 50X8X280 F8,75, CENTRAL SLIDE, SUIT, IMM, KRONO DELTA, 15MT, I058PLA000	6
15	GA0500060	HEX SOCKET COUNTERSUNK FLAT HEAD CAP SCREW M8X25 UNI 593310.9	34
16	GA5004917	NUT M8 NYLOC ZP	42
17	GA5055535	ISOLATOR, RUBBER, 38 X 25, M8 MALE, FEMALE	2
18	GA5078686	BRACKET, CENTRAL SLIDE, HOUSING, SUIT, IMM, KRONO DELTA, 15MT, IZ58SLT000	2
19	GA5078687	BRACKET, BOOM REST, SLIDE, "RH", INNER, SUIT, IMM, KRONO DELTA, 15MT, IZ58SLT01D	1
	GA5078688	BRACKET, BOOM REST, SLIDE, "LH", INNER, SUIT, IMM, KRONO DELTA, 15MT, IZ58SLT01S	1
20	GA5078689	ORBILAN PLATE, 40X8X120 F8,75, SLIDE ASSY, IMM, KRONO DELTA, 15MT, I058PLA070	2
21	GA5000259	BOLT M12 X 100 GR8.8 ZP	8
22	GA5000577	WASHER 12mm FLAT SS HD	8
23	GA5012461	NUT M12 NYLOC ZP	8
24	GA5078690	PLATE, SLIDE ASSY, OUTER, IMM, KRONO DELTA, 15MT, IZ58CPC000	2
25	GA5078691	ORBILAN PLATE, 50X8X140 F8,75, SIDE, GUIDE PLATE, IMM, KRONO DELTA, 15MT, I058PLA010	4
26	GA5012385	NUT M16 ZP	4
27	GA5078692	SET SCREW, M16 X 60MM GR8.8, ZP	4
28	GA5000941	BOLT M16 X 60 GR8.8 ZP	2
29	GA5078693	TIE ROD ASSY, SUIT, INNER WING, IMM, KRONO DELTA, 15MT, IZ58TIR101	2
30	GA5000319	SET SCREW M12 X 40 GR8.8 ZP	4
31	GA5078694	BRACKET, CRADLE GUIDE, INNER BOOM WING, IMM, KRONO DELTA, 15MT, IZ58CNM000	2
32	GA5078695	BOOM WING, INNER, "RH", IMM, KRONO DELTA, 15MT, IC58IN100D	1
	GA5078696	BOOM WING, INNER, "LH", IMM, KRONO DELTA, 15MT, IC58IN100S	1
33	GA5053405	NIPPLE GREASE 8mm STRAIGHT	4
34	GA5078697	BUSH, SELF LUBRICATING, 20X28X20MM, SUIT, IMM, KRONO DELTA, 13B00342	8
35	GA5078698	ORBILAN PLATE, LOWER, SLIDE ASSY, 40X8X120 F8,75, IMM, KRONO DELTA, 15MT, I058PLA080	2
GA7800121		BOOM WING, INNER, IMM, KRONO DELTA, 15MT	REV 00

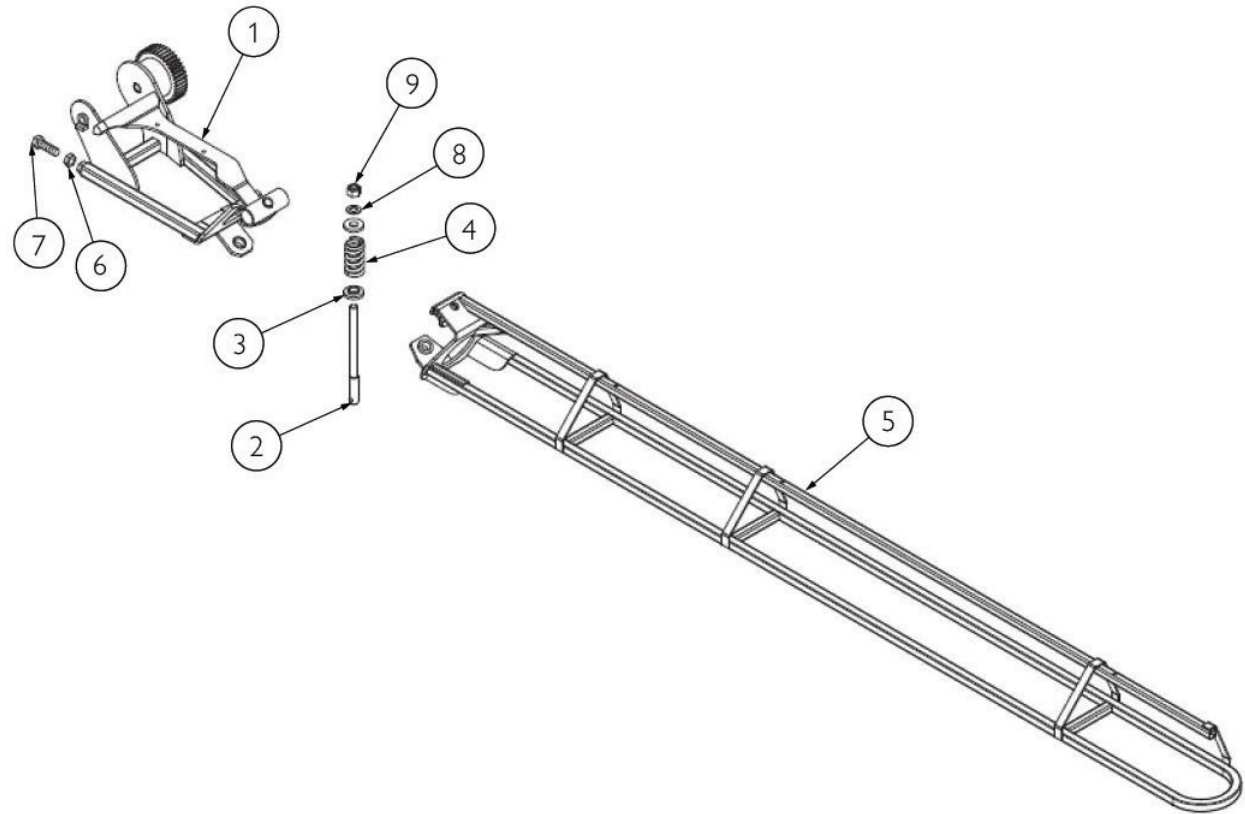
Boom Wing, Mid, IMM, Krono Delta, 15mt



IF DESCRIPTION PREFIX IS ASSEMBLY DRAWING ONLY OR PRODUCTION DRAWING ONLY THE ITEM IS NOT FOR SALE			
ITEM	PART NUMBER	DESCRIPTION	QTY
1	GA5001043	WASHER 16mm FLAT SS HD	2
2	GA5001029	NUT M16 NYLOC ZP	2
3	GA0500060	HEX SOCKET COUNTERSUNK FLAT HEAD CAP SCREW M8X25 UNI 593310.9	16
4	GA5004917	NUT M8 NYLOC ZP	16
5	GA5000259	BOLT M12 X 100 GR8.8 ZP	2
6	GA5000577	WASHER 12mm FLAT SS HD	6
7	GA5012461	NUT M12 NYLOC ZP	4
8	GA5078699	ORBILAN PLATE, 50X8X140 F8,75, SUIT, IMM, KRONO DELTA, 15MT, I058PLA010	4
9	GA5078700	ORBILAN PLATE, 40X8X120 F8, 75, BOTTOM, MID WING, SUIT, IMM, KRONO DELTA, 15MT, I058PLA090	2
10	GA5075195	CIRCLIP, M16, KRONO, TOWER CYLINDER, 05SE0020	4
11	GA5075065	CLEVIS PIN, M16, SUIT, KRONO BOOM, 20PE0550Z	2
12	GA5078701	PLATE COVER, BASE, MID WING, OUTER SLIDE ASSY, SUIT, IMM, KRONO DELTA, 15MT, IZ58CPC010	2
13	GA5078702	BRACKET, SLIDE ASSY, HOUSING, MID WING, SUIT, IMM, KRONO DELTA, 15MT, IZ58SLT020	2
14	GA5078703	TIE ROD ASSY, MID WING, SUIT, IMM, KRONO DELTA, 15MT, IZ58TIR111	2
15	GA5000319	SET SCREW M12 X 40 GR8.8 ZP	2
16	GA5078704	RACK LEVER, MID WING, SUIT, IMM, KRONO DELTA, 15MT, IZ58LYC000	2
17	GA5078705	SUPPORT BRACKET, SUIT, RACK LEVER, IMM, KRONO DELTA, 15MT, 08PPA000	2
18	GA5078706	BRACKET DISH, SUIT, RACK LEVER, IMM, KRONO DELTA, 15MT, IZ58PRG000	2
19	GA5000559	NUT M12 HEX ZP	2
20	GA5000347	BOLT M12 X 70 GR8.8 ZP	4
21	GA5078707	TIE ROD, MID SECTION, BOOM WING, IMM, KRONO DELTA, 15MT, IZ58TIR110	2
22	GA5078708	PIVOT ROD, JOINER, MID WING, IMM, KRONO DELTA, 15MT, 20PE0555Z	2
23	GA5078709	TIE ROD, OUTER, MID WING, SUIT, IMM, KRONO DELTA, 15MT, IZ58TIR013	2
24	GA5078710	OUTER SLIDE ASSY, MID WING, IMM, KRONO DELTA, 15MT, IZ58BOC030	2
25	GA5000141	NUT M10 NYLOC ZP	4
26	GA5000117	WASHER 10mm FLAT SS HD	4
27	GA5078711	SPACER BUSH, L=51, SUIT, IMM, KRONO DELTA, 15MT, IZ58BOC030	4
28	GA5011163	BOLT M10 X 70 GR8.8 ZP	4
29	GA5078712	BUMP STOP, RUBBER, 20X20XM6, IMM, KRONO DELTA, 15MT, IZ58IO10	2
30	GA5078713	BRACKET, EXTENSION SUPPORT, SUIT, IMM, KRONO DELTA, 15MT, IZ58APP000	2
31	GA5011489	BOLT M8 X 60 GR8.8 ZP	4
32	GA5003643	WASHER 8mm FLAT SS HD	4
33	GA5078714	BOOM WING, MID SECTION, "RH", IMM, KRONO DELTA, 15MT, IC58IN200D	1
	GA5078715	BOOM WING, MID SECTION, "LH", IMM, KRONO DELTA, 15MT, IC58IN200S	1
34	GA5000895	BOLT M16 X 220 GR8.8 ZP	2
35	GA5078716	ORBILAN PLATE, PLASTIC, LOWER, MID WING, SLIDE ASSY, IMM, KRONO DELTA, 15MT, I058PLA100	2
36	GA5078717	BRACKET, BUMP STOP, MID WING, SUIT, IMM, KRONO DELTA, 15MT, IZ58APP010	2
GA7800122		BOOM WING, MID, IMM, KRONO DELTA, 15MT	REV 00
GOLDACRES			

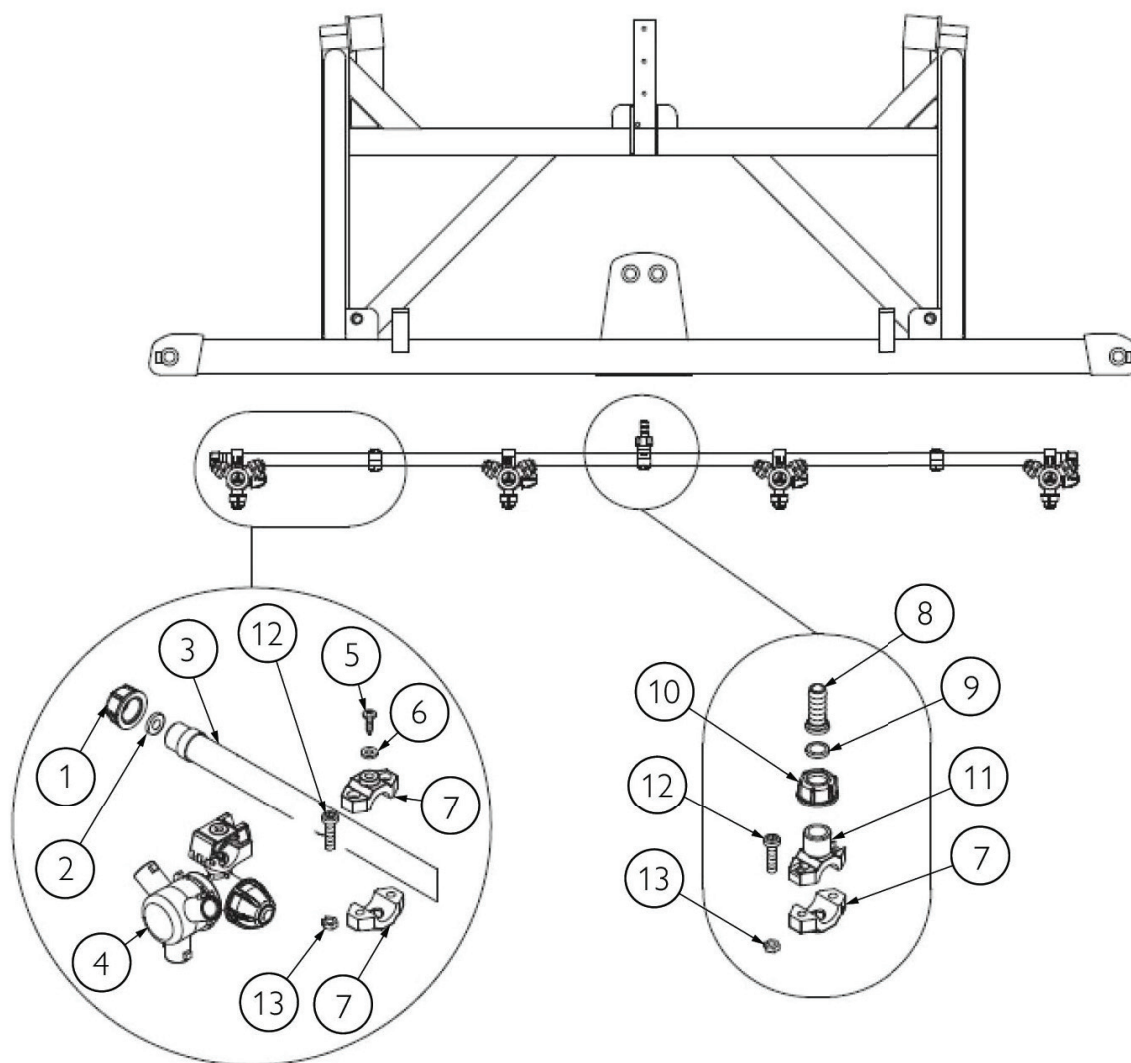


Boom Wing, Outer, IMM, Krono Delta, 15mt



IF DESCRIPTION PREFIX IS ASSEMBLY DRAWING ONLY OR PRODUCTION DRAWING ONLY THE ITEM IS NOT FOR SALE			
ITEM	PART NUMBER	DESCRIPTION	QTY
1	GA5078718	HINGE BRACKET, "RH" OUTER WING, IMM, KRONO DELTA, 15MT, IC58SMN00D	1
	GA5078719	HINGE BRACKET, "LH" OUTER WING, IMM, KRONO DELTA, 15MT, IC58SMN00S	1
2	GA5078720	PIN, EXTENSION ARM, OUTER WING HINGE, IMM, KRONO DELTA, 15MT, IZ58PER020	2
3	GA5074750	WASHER, NYLON, SUIT, KRONO BOOM, 12URC000	4
4	GA5075475	SPRING, EXTENSION, SUIT, KRONO BOOM, 12MT, 18MO0250Z	2
5	GA5078721	BOOM WING, OUTER, "RH", IMM, KRONO DELTA, 15MT, IC58PRO00D	1
	GA5078722	BOOM WING, OUTER, "LH", IMM, KRONO DELTA, 15MT, IC58PRO00S	1
6	GA5012385	NUT M16 ZP	4
7	GA5078692	SET SCREW, M16 X 60MM GR8.8, ZP	2
8	GA5001043	WASHER 16mm FLAT SS HD	2
9	GA5001029	NUT M16 NYLOC ZP	2
GA7800123		BOOM WING, OUTER, IMM , KRONO DELTA BOOM, 15MT	REV 00

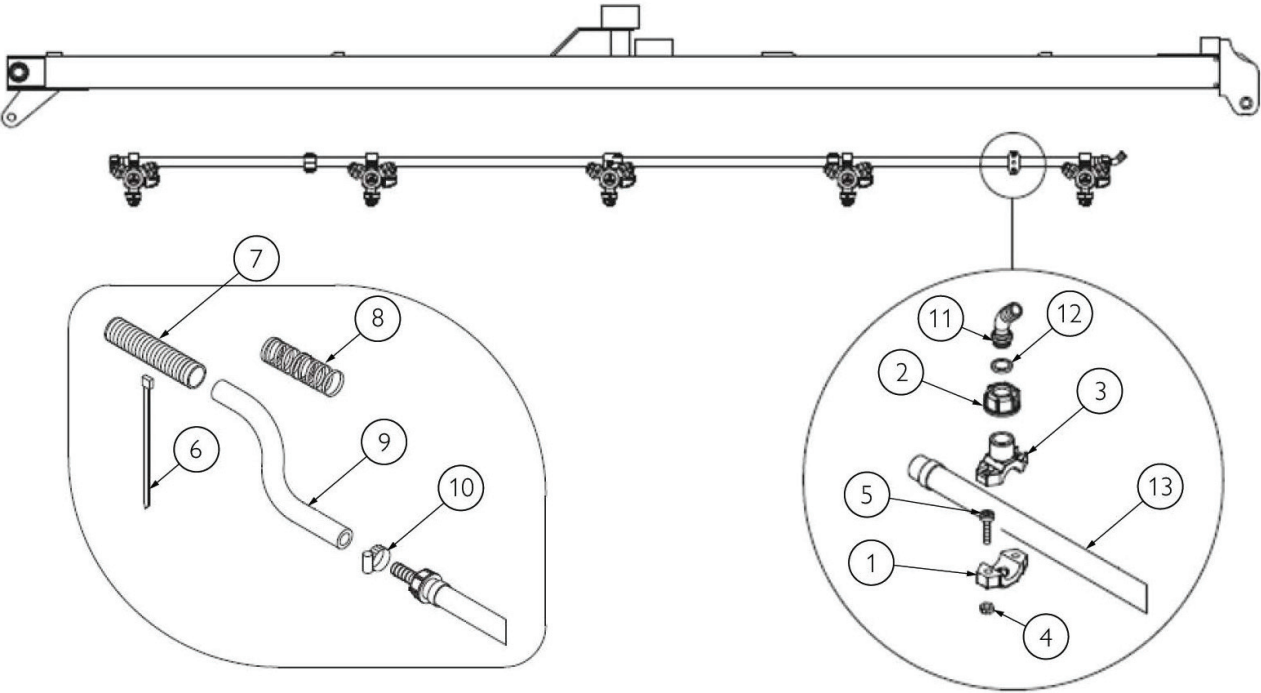
Boom Plumbing Line, Centre Section, IMM, Krono Delta 15mt



IF DESCRIPTION PREFIX IS ASSEMBLY DRAWING ONLY OR PRODUCTION DRAWING ONLY THE ITEM IS NOT FOR SALE			
ITEM	PART NUMBER	DESCRIPTION	QTY
1	GA5074815	END CAP, 1/2", SUIT, KRONO, 02ATA001	2
2	GA5074820	GASKET, SUIT, 1/2" END CAP, KRONO, I060ASM540	2
3	GA5075005	PLUMBING LINE, BOOM, CENTRE SECTION, KRONO DELTA, 15MT, I058AST540	1
4	GA5077969	NOZZLE BODY, TRIPLE, TRIJET, CLOCK FACE, 1/2, TEEJET, QJ363C-1/2-NYB	4
5	GA5004041	BOLT M6 X 16 GR8.8 ZP	2
6	GA5004437	WASHER 6mm FLAT SS	2
7	GA5074765	MOUNTING CLAMP, 1/2", SUIT, KRONO, BOOM LINE	5
8	GA5074780	HOSE TAIL, FLAT SEAT, 13mm, KRONO, 02ARD002	1
9	GA5075015	GASKET, SUIT, FLAT SEAT, HOSE BARB, 1/2", KRONO DELTA, 02AOR007	1
10	GA5074790	FLY NUT, SUIT, 13mm, HOSE BARB, KRONO, 02AGI002	1
11	GA5074800	UPPER POLY CLAMP, SUIT, FLAT SEAT, HOSE BARB, 1/2", 02ACA008	1
12	GA5004055	SHCS M6 X 20 GR12.9 ZP	10
13	GA5000559	NUT M12 HEX ZP	10
GA7800124		BOOM PLUMBING LINE, CENTRE SECTION, IMM, KRONO DELTA, 15MT	REV 00

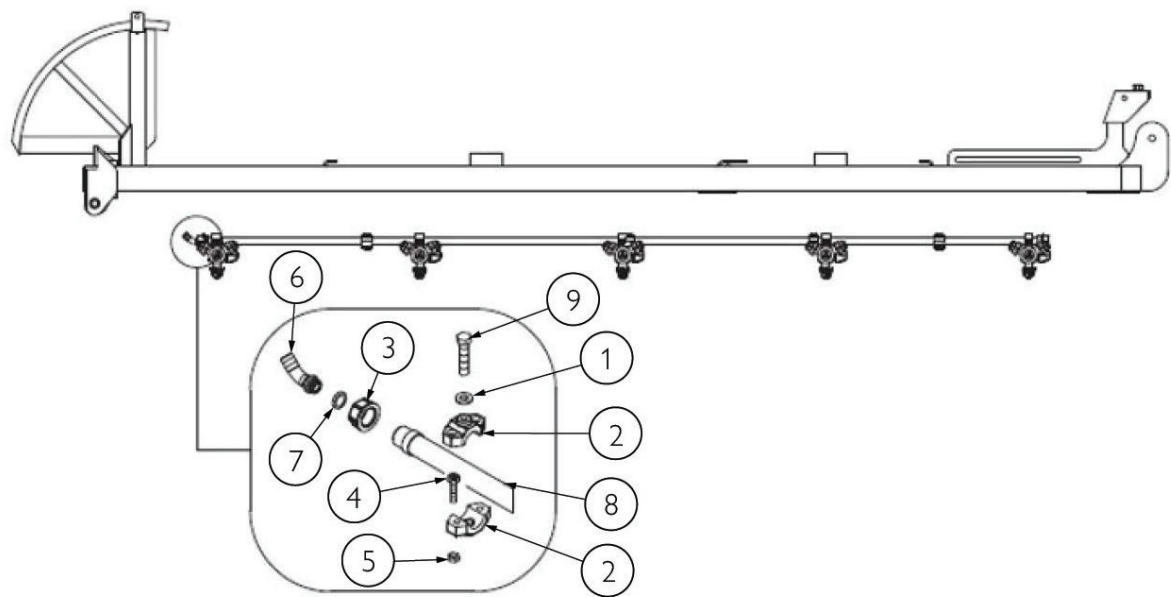


Boom Plumbing Line, Inner Wing, IMM, Krono Delta, 15mt



IF DESCRIPTION PREFIX IS ASSEMBLY DRAWING ONLY OR PRODUCTION DRAWING ONLY THE ITEM IS NOT FOR SALE			
ITEM	PART NUMBER	DESCRIPTION	QTY
1	GA5074765	MOUNTING CLAMP, 1/2", SUIT, KRONO, BOOM LINE	10
2	GA5074790	FLY NUT, SUIT, 13mm, HOSE BARB, KRONO, 02AGI002	4
3	GA5074800	UPPER POLY CLAMP, SUIT, FLAT SEAT, HOSE BARB, 1/2", 02ACA008	2
4	GA5000559	NUT M12 HEX ZP	20
5	GA5004055	SHCS M6 X 20 GR12.9 ZP	20
6	GA5004455	CABLE TIES BLACK 190 X 4.5 mm [C]	-
7	GA5074770	SHEATH, 28mm, SUIT, KRONO, 03AGU001	2
8	GA5074775	SPIRAL GUARD, 44X50, SUIT, KRONO, 08DSP007	2
9	GA2000211	HOSE, PRESSURE, 12mm, BLACK, 250PSI, HOS13P, SOLD PER METER	-
10	GA5000469	HOSE CLAMP, 1/2" SS 12-20/9W3	4
11	GA5075025	HOSE BARB, ELBOW, 45D, FLAT SEAT, 13mm, KRONO DELTA, 02ARC003	2
12	GA5074785	GASKET, SUIT, FLAT SEAT, HOSE BARB, 1/2", KRONO, 02AOR005	4
13	GA5075530	PLUMBING LINE, BOOM, 1/2", INNER WING, SUIT, KRONO DELTA, 15MT, I058AST541	2
GA7800125		BOOM PLUMBING LINE, INNER WING, IMM, KRONO DELTA, 15MT	REV 00

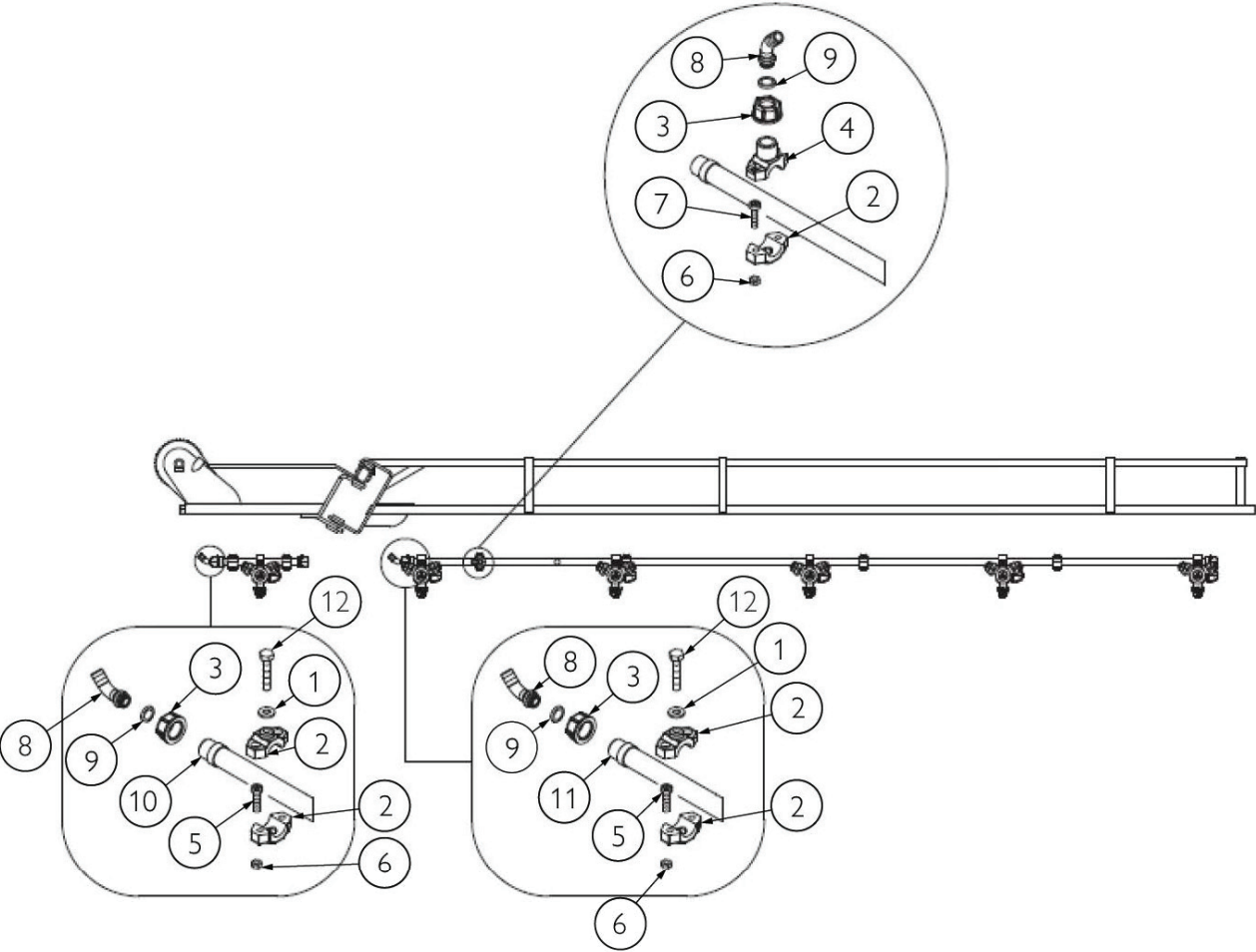
Boom Plumbing Line, Mid Wing, IMM, Krono Delta, 15mt



IF DESCRIPTION PREFIX IS ASSEMBLY DRAWING ONLY OR PRODUCTION DRAWING ONLY THE ITEM IS NOT FOR SALE			
ITEM	PART NUMBER	DESCRIPTION	QTY
1	GA5004437	WASHER 6mm FLAT SS	6
2	GA5074765	MOUNTING CLAMP, 1/2", SUIT, KRONO, BOOM LINE	12
3	GA5074790	FLY NUT, SUIT, 13mm, HOSE BARB, KRONO, 02AGI002	2
4	GA5004055	SHCS M6 X 20 GR12.9 ZP	22
5	GA5004397	NUT M6 ZP	22
6	GA5075025	HOSE BARB, ELBOW, 45D, FLAT SEAT, 13mm, KRONO DELTA, 02ARC003	2
7	GA5074785	GASKET, SUIT, FLAT SEAT, HOSE BARB, 1/2", KRONO, 02AOR005	2
8	GA5075535	PLUMBING LINE, BOOM, 1/2", MID WING, SUIT, KRONO DELTA, 15MT, I058AST542	2
9	GA5011405	BOLT M6 X 35 GR8.8 ZP	6
GA7800126		BOOM PLUMBING LINE, MID WING, IMM, KRONO DELTA, 15MT	REV 00

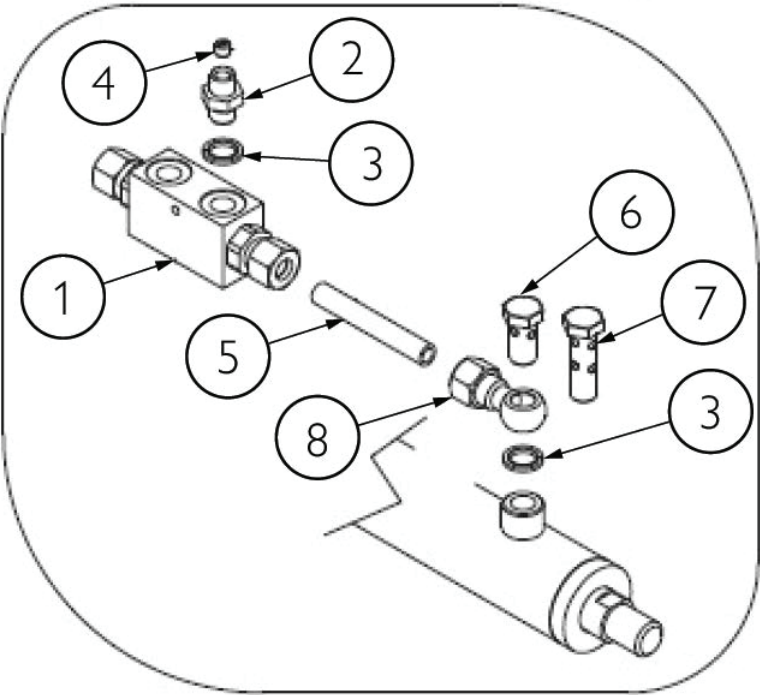


Boom Plumbing Line, Outer Wing, IMM, Krono Delta 15mt



IF DESCRIPTION PREFIX IS ASSEMBLY DRAWING ONLY OR PRODUCTION DRAWING ONLY THE ITEM IS NOT FOR SALE			
ITEM	PART NUMBER	DESCRIPTION	QTY
1	GA5004437	WASHER 6mm FLAT SS	12
2	GA5074765	MOUNTING CLAMP, 1/2", SUIT, KRONO, BOOM LINE	22
3	GA5074790	FLY NUT, SUIT, 13mm, HOSE BARB, KRONO, 02AGI002	6
4	GA5074800	UPPER POLY CLAMP, SUIT, FLAT SEAT, HOSE BARB, 1/2", 02ACA008	2
5	GA5004055	SHCS M6 X 20 GR12.9 ZP	10
6	GA5004397	NUT M6 ZP	12
7	GA5004055	SHCS M6 X 20 GR12.9 ZP	2
8	GA5075025	HOSE BARB, ELBOW, 45D, FLAT SEAT, 13mm, KRONO DELTA, 02ARC003	6
9	GA5075015	GASKET, SUIT, FLAT SEAT, HOSE TAIL	6
10	GA5075540	PLUMBING LINE, BOOM, 1/2", OUTER WING, "SHORT", SUIT, KRONO DELTA, 15MT, I058AST510	2
11	GA5075545	PLUMBING LINE, BOOM, 1/2", OUTER WING, "LONG", RH, SUIT, KRONO DELTA, 15MT, I058AST543	1
	GA5075550	PLUMBING LINE, BOOM, 1/2", OUTER WING, "LONG", LH, SUIT, KRONO DELTA, 15MT, I058AST544	1
12	GA5011405	BOLT M6 X 35 GR8.8 ZP	8
GA7800127		GOLDACRES BOOM PLUMBING LINE, OUTER WING, IMM, KRONO DELTA, 15MT	REV 00

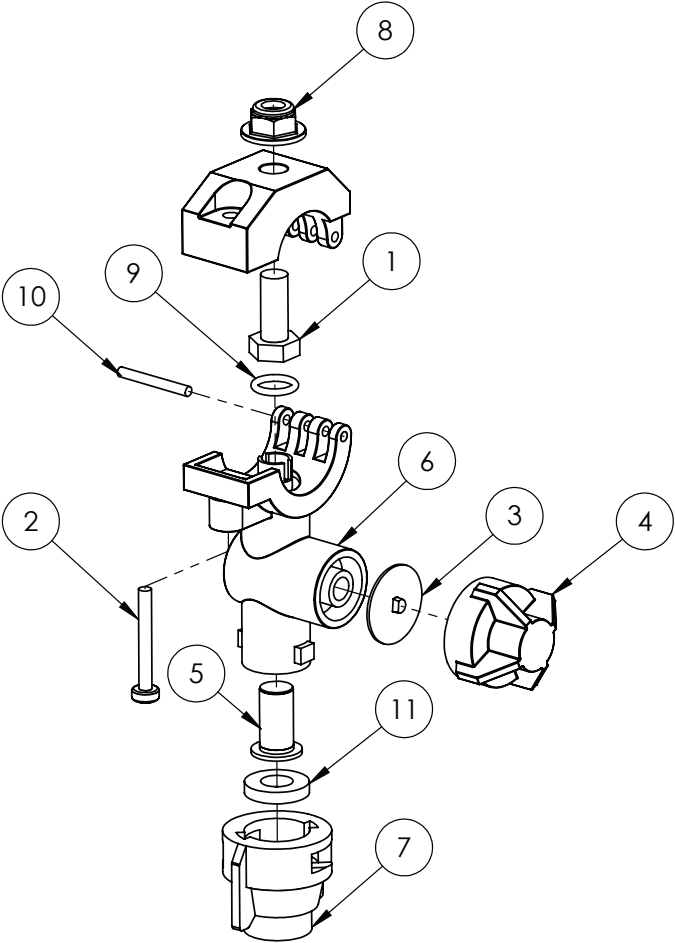
Hydraulic Line Assy, Centre Section, IMM, Krono Delta, 15mt




IF DESCRIPTION PREFIX IS ASSEMBLY DRAWING ONLY OR PRODUCTION DRAWING ONLY THE ITEM IS NOT FOR SALE			
ITEM	PART NUMBER	DESCRIPTION	QTY
1	GA5075560	PHASING BLOCK, SUIT, KRONO DELTA, HYDRAULIC TILT CYLINDER, 15MT, 07VA0020	2
2	GA5075290	NIPPLE, 1/4", HYDRAULIC, KRONO, TOWER CYLINDER	4
3	GA5075285	WASHER, 1/4", BONDED, SUIT, KRONO, TOWER CYLINDER, 07RO0050	4
4	GA5075295	GIGLUER, M8, SUIT, KRONO, ROCKER FRAME CYLINDER, 09GGI000	4
5	GA5075580	TUBE, BONDERIZED, 12mm, SUIT, PHASE BLOCK, KRONO DELTA, TILT CYLINDER, 06TU0180	-
6	GA5075585	BOLT, HOLLOW, HYDRAULIC FLOW, SINGLE DRILLED, 07BU0010	2
7	GA5075590	BOLT, HOLLOW, HYDRAULIC FLOW, DOUBLE DRILLED, 07BU0015	2
8	GA5075595	EYELET BOLT, 12mm, WITH NUT, SUIT, KRONO DELTA, TILT CYLINDER, 07OC0100	4
GA7800120		HYDRAULIC LINE ASSY, SUIT, IMM, DELTA, CENTRE SECTION, HYDRAULIC CYLINDER	REV 00

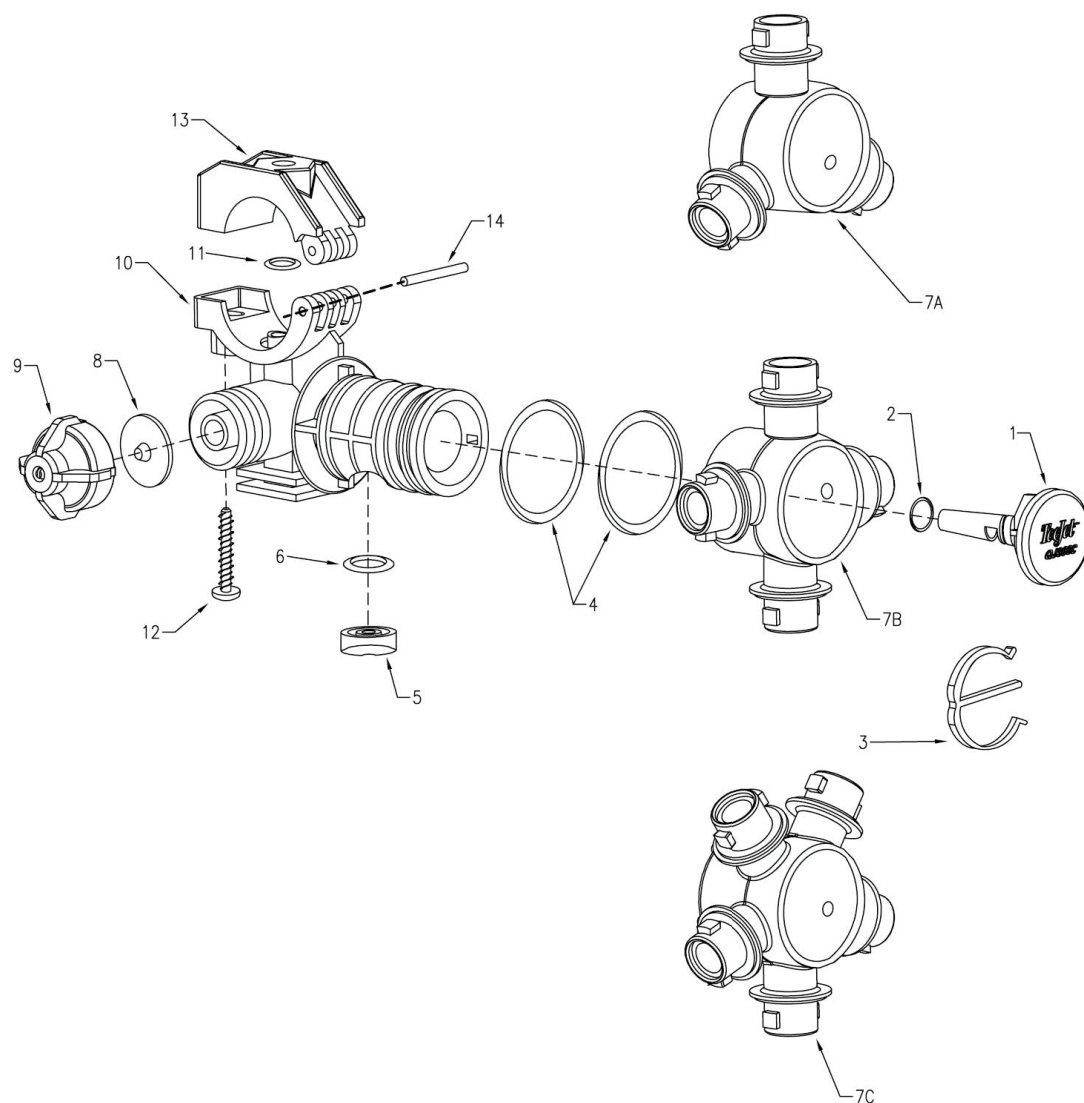


Nozzle Body, Teejet, Single, 1/2"



IF DESCRIPTION PREFIX IS ASSEMBLY DRAWING ONLY OR PRODUCTION DRAWING ONLY THE ITEM IS NOT FOR SALE			
ITEM	PART NUMBER	DESCRIPTION	QTY
1	GA5004085	BOLT M8 X 20 GR8.8 ZP	1
2	GA5049020	BOLT PAN HEAD M4 X 25 SS	1
3	GA5077439	CHEMSAVER, DIAPHRAGM, CP21953-EPR, TEEJET	1
4	GA5076670	CHEMSAVER, 10PSI, BLACK, TEEJET, 21950-10-NYB	1
5	8079-NOZZLE MESH	FILTER, NOZZLE TIP, RED, 50 MESH, POLYPROPYLENE & SS, TEEJET, 8079-PP-50	1
6	GA5077538	NOZZLE BODY, 3/4", TEEJET, CP48498-NYB	1
7	GA5077983	NOZZLE CAP & WASHER, BLACK, NYLON, TEEJET, QJ4676-1/4-NYR	1
8	GA5070710	NUT WITH FLANGE, PLASTIC, M8 X 1.25	1
9	GA5077596	O RING, 14.5 X 2.5, BUNA, CP7717-2/110-BU, SUITS QJ7421 SERIES NOZZLE BODIES.	1
10	GA5077537	PIN, NOZZLE BODY CLAMP, TEEJET, CP48256-SS	1
11	GA5055245	WASHER, NOZZLE CAP SEAL, RUBBER, 19 OD X 9 ID, SUIT TEE JET NOZZLE, REPLACES CP19438-EPR	1
GA7800116  GOLDACRES		NOZZLE BODY, SINGLE, 3/4, TEEJET, QJ17560A-3/4-NYB	REV

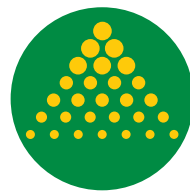
Nozzle Body, Teejet, Clockface, 1/2"



IF DESCRIPTION PREFIX IS ASSEMBLY DRAWING ONLY OR PRODUCTION DRAWING ONLY THE ITEM IS NOT FOR SALE			
ITEM	PART NUMBER	DESCRIPTION	QTY
1	GA5074440	PLUG, NYLON, TEEJET, SUIT, CLOCKFACE, CP38930-8-NYB	1
2	GA5074435	O-RING, TEEJET, CLOCKFACE, EPDM, CP7717-2-13-EPR	1
-	GA5074455	O-RING, TEEJET, CLOCKFACE, VITON, CP7717-2-13-VI	-
3	GA5077496	E CLIP, NOZZLE BODY, TEEJET, CP38931-NYB	1
4	GA5077609	O'RING, CP7717-M28X3-EPRTFE	2
-	GA5077609	O'RING, CP7717-M28X3-EPRTFE	-
5	GA5077557	QJ360 SEAL F/CF&E, CP56726-VITFE	1
6	GA5077605	O RING VITON, CP7717-2-111-VI	1
7A	GA5077491	NOZZLE BODY TURRET, 3 OUTLET CLOCK FACE STYLE, TEEJET, CP38921-2-NYB	1
7B	GA5074445	NOZZLE BODY TURRET, 4 OUTLET CLOCK FACE STYLE TEEJET, CP38922-2-NYB	-
7C	GA5074450	NOZZLE BODY TURRET, 5 OUTLET CLOCK FACE STYLE, CP38923-2-NYB	-
8	GA5077439	CHEMSAVER, DIAPHRAGM, CP21953-EPR, TEEJET	1
-	GA5077440	DIAPHRAGM, VITON, NOZZLE BODY CHECK VALVE, TEEJET	-
9	GA5076670	CHEMSAVER, 10PSI, BLACK, TEEJET, 21950-10-NYB	1
10	GA5077501	1/2 BODY FOR 360C, CP38942-2-NYB	1
-	GA5077493	3/4 360C BODY NYLON, CP38925-2-NYB	-
-	GA5077494	BODY, 360 SERIES 1", TEEJET, CP38926-2-NYB	-
11	GA5077605	O RING VITON, CP7717-2-111-VI	1
12	GA5077536	SCREW, SUIT TEEJET NOZZLE BODIES QJ360 AND QJ17560, 1-1/4 LONG, SS, CP48255-11/4-302SS	1
13	GA5077534	1/2 UPPER CLAMP, CP48223-NYB	1
-	GA5077532	CLAMP, NOZZLE BODY, 3/4, TEEJET, CP48221-NYB	-
-	GA5077533	NOZZLE BODY CLAMP, UPPER, 1, TEEJET, CP48222-NYB	-
-	GA5077535	25MM UPPER CLAMP, CP48224-NYB	-
14	GA5077537	PIN, NOZZLE BODY CLAMP, TEEJET, CP48256-SS	1
GA5077970		NOZZLE BODY, TRIPLE, TRIJET, CLOCK FACE, 1", TEEJET, QJ363C-1-NYB	REV 00



GOLDACRES



GOLDACRES