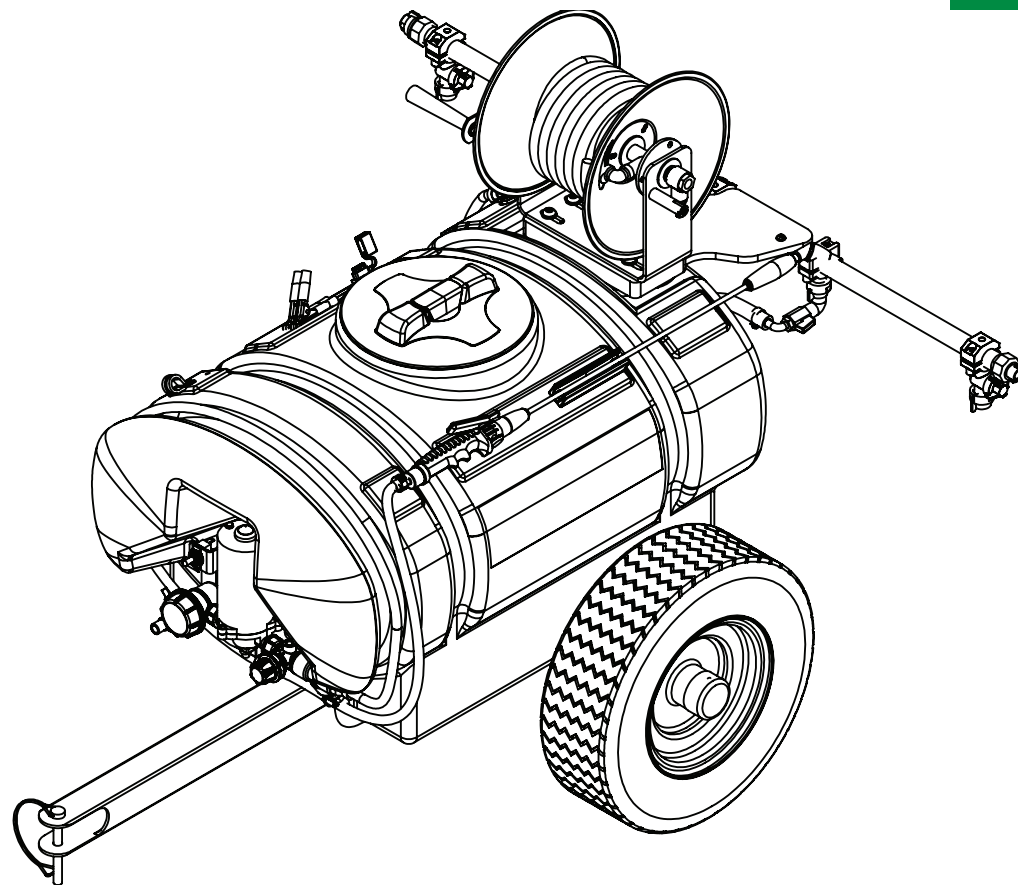


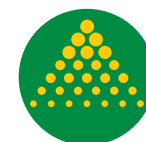
# Spotmate & Traymate Operators & Parts Manual



Manual GA8701872-REV 00

GA6500025 - 50L Spotmate  
GA6500026 - 100L Spotmate  
GA6500034 - 100L Spotmate Trailer  
GA6500029 - 200L Spotmate  
GA6500028 - 100L Traymate  
GA6500030 - 200L Traymate

PARTS MANUAL  
MY24



**GOLDACRES**



# Introduction

## Introduction

Congratulations on your purchase of a Goldacres sprayer. For more than a quarter of a century Goldacres has supplied Australian farmers with quality, innovative and technologically advanced spraying solutions - equipment designed in Australia for Australian conditions.

Goldacres not only produce Australia's finest range of spraying equipment - we also keenly value the unique relationship we enjoy with owners of our equipment. We are pleased to welcome you as a Goldacres owner and look forward to making your spray applications as efficient as possible.

Please use this comprehensive resource to gain a full understanding of your equipment, and don't hesitate to contact your Goldacres Dealer or Goldacres for further information.

**Roger Richards**  
General Manager

For further information about any of the products shown please visit - [www.goldacres.com.au](http://www.goldacres.com.au)

© Goldacres Trading 2021  
This publication and all designs are copyright.

No part, products or designs may be reproduced by any process except in accordance with the Copyright act 1968.

All information in this operator's manual is based on the latest product information available at the time of printing. The policy of Goldacres is one of continuous improvement and as such, Goldacres reserve the right to alter any specifications and designs without notice and without incurring any obligation regarding such changes.

No part of this manual may be reproduced without written permission from Goldacres. All photographs and technical information remain the property of Goldacres.

Goldacres Trading Pty Ltd  
3 Morang Crescent  
Mitchell Park Vic 3355  
Ph: 03 5342 6399  
Fax: 03 5342 6308



Introduction . . . . .	2
Contents . . . . .	3
Safety . . . . .	4
Safety . . . . .	5
General Information & Specifications . . . . .	6
Dimensions . . . . .	7
Operations and Sprayer Care . . . . .	8
Pump Troubleshooting. . . . .	9
Spotmate, 50L, Tank and Lid. . . . .	10
Spotmate, 50L, Sight Tube . . . . .	11
Spotmate, 50L, Pump and Electrical Harness . . . . .	12
Spotmate, 50L, Lance and Lance Holder . . . . .	13
Spotmate, 50L, Hoses. . . . .	14
Spotmate, 100L, Tank and Lid. . . . .	15
Spotmate, 100L, Lance and Lance Holder . . . . .	16
Spotmate, 100L, Sight Tube . . . . .	17
Spotmate, 100L, Hoses. . . . .	18
Spotmate, 100L, with Optional 15mt Hose Reel . . . . .	19
Spotmate Trailer, 100L. . . . .	20
Spotmate Trailer, 100L with Optional 15mt Hose Reel . . . . .	21
Spotmate, 100L, Trailer Assembly . . . . .	22
Spotmate Trailer, 100L, Boom Assembly . . . . .	23
Spotmate, 100L - 200L Pump Assembly. . . . .	24
Pump, Shurflo, 12v, 6.8L, 8000 Series. . . . .	25
Spotmate, 200L, Tank and Lid. . . . .	26
Spotmate, 200L Lance and Lance Holder . . . . .	27

Spotmate, 200L, Sight Tube . . . . .	28
Spotmate, 200L, Hoses. . . . .	29
Spotmate, 200L with Optional 15mt Hose Reel . . . . .	30
Traymate, 100L, Tank and Lid . . . . .	31
Traymate, 100L, Pump Assembly . . . . .	32
Traymate, 100L, Spray Gun and Bracket. . . . .	33
Spray Gun - GunJet AA30L. . . . .	34
Spray Gun Nozzle . . . . .	35
Traymate, 100L, Sight Tube . . . . .	36
Traymate, 100L, Hoses . . . . .	37
Traymate, 100L, with Optional 15mt Hose Reel . . . . .	38
Traymate, 200L, Tank and Lid . . . . .	39
Pump Assembly, Traymate, 200L. . . . .	40
Pump, Shurflo, 12v, 20L, 5059 Series . . . . .	41
Traymate, 200L, Spray Gun and Bracket. . . . .	42
Traymate, 200L, Sight Tube . . . . .	43
Traymate, 200L, Hoses . . . . .	44
Traymate, 200L with Optional 15mt Hose Reel . . . . .	45
Miscellaneous Parts. . . . .	46
Goldacres Terms & Conditions of Sale & Warranty. . . . .	47

# Safety

## GENERAL

The following pages outline important safety information. At Goldacres safety is a high priority. These safety and warning instructions MUST be followed to ensure the safe operation of your Goldacres equipment.

Explanation of key terms used in this operator's manual are:

**DANGER** - You will be killed or seriously hurt if you don't follow instructions

**WARNING** - You can be seriously hurt if you do not follow instructions

**CAUTION** - You can be hurt if you do not follow instructions

**NOTE** - Is used to notify people of installation, operation or maintenance information that is important but not hazard related.

## The Operator

All operators of this equipment should be adequately trained in the safe operation of this equipment. It is important that all operator's have read and fully understand the operators manual prior to using this equipment.

All new operators should be trained in an area without bystanders or obstructions and become familiar with the sprayer prior to operation.

Safety Precautions

## WARNINGS

- Never stand within the radius of boom wings.
- Keep clear of overhead obstructions.
- **CRUSH HAZARD** - Keep hands clear of moving parts when carrying out boom fold and unfold sequences.
- Any unauthorised modifications to this equipment may affect its function and create a serious safety risk.
- Never attempt to clean parts or nozzles, by blowing with mouth.
- Never attempt to siphon chemicals, or substances, by sucking.
- It is imperative that the vehicle manufacturer's specifications be checked and all instructions for use when

transporting, or towing, be adhered to at all times.

- Care should be taken when transferring liquid into the tank to ensure that the gross weight of the equipment does not exceed the carrying, braking and/or towing capacity of the vehicle to which the equipment is attached as specified by the vehicle manufacturer.

## NOTE: 1 LITRE WATER = 1KG.

- Water weighs 1kg per litre, however conversion factors must be used when spraying liquids that are heavier or lighter than water. Example: liquid urea has a density of 1.28 kg/L and will therefore be significantly heavier than water if the tank is filled completely.
- Suitable care should be taken when driving with the equipment attached to the vehicle. Consideration should be given to both the carrying capacity of the vehicle and the gradient of the terrain when determining the speed at which the vehicle can be driven safely.
- Ensure that the maximum speed of the vehicle, when loaded, is within the vehicle manufacturers limitations.
- Ensure equipment is securely fastened, or attached to the vehicle at all times.
- Regularly check the pump mounting bolts. The pump will always vibrate to some degree when operating, and this may work the bolts loose.

## CAUTIONS

- Always ensure that there is adequate room for the boom to open.
- Always ensure that the boom is adequately supported when transporting.
- A supply of fresh water should be with the equipment at all times.
- Standard polyethylene tanks are not designed for use with diesel fuel or any flammable liquid.
- Do not use this machine in ambient temperatures exceeding 40 degrees Celsius.

- Ensure that all bolts are tightened and secured before operation.
- Where fitted, always ensure that the boom is securely supported when travelling.
- Area surrounding equipment may become slippery when wet.

## NOTES

- Always read and understand the operator's manual prior to operation of this equipment.
- It is the responsibility of the operator to ensure that there are no decals missing from the equipment and that any damaged or missing decals are replaced prior to operation.
- Goldacres equipment ordered or operated, outside the guideline limitations may not be warranted by Goldacres for successful performance. Operators working outside these limitations do so at their own risk, unless specific advice has been sought from and provided by Goldacres in writing.
- Always read and follow the chemical manufacturer's guidelines for safe application as per the chemical label. Particular attention should be given to the recommended target application rate of the chemical being applied as per the chemical label.
- Inspect the equipment thoroughly for damage and wear before operation.
- Flush chemicals from equipment immediately after use.
- Certain chemicals may be unsuitable for use with Goldacres standard plumbing designs. Consult your Goldacres dealer if in doubt.
- Do not operate the equipment while under the influence of any drugs, alcohol or if excessively tired.
- Make sure that the equipment complies with all relevant road regulations when transporting.
- When draining fluids from the equipment use appropriate, leak proof containers. Do not use food or beverage containers

as someone may consume the contents by mistake.

- After reading the operator's manual if there is any thing that you do not understand please contact your Goldacres dealer.

Safe Chemical Use

The safe use of Ag chemicals with this equipment is the responsibility of the owner/operators. All operators should be trained in the safe use of Ag chemicals. Goldacres suggest that a relevant course is completed by owners/operators prior to operation of this equipment as a spray unit.

Personal Protective Equipment (PPE)

Always wear close fitting clothing and safety equipment designed for the job.

Chemicals can be harmful to humans, appropriate PPE should be used when handling chemicals.

Always refer to the chemical manufacturers label for guidelines on the appropriate PPE to use with the chemicals you are using.

Goldacres also suggest that you read and understand the following Australian standards:

- Australian Standard for Chemical protective clothing AS3765
- Australian Standard for Respiratory protection devices AS1715

Airborne particles

Always stand well clear of equipment during operation. Any spray drift is dangerous and may be hazardous to humans and animals.

Fluids under pressure

Do not disconnect any hoses, nozzles or filters while equipment is operating. Disconnecting these components while under pressure may result in uncontrolled fluid discharge which may be hazardous.

When the repair is complete ensure that all fittings and lines are secured before re-applying pressure.

## **CUTS, STABS & PUNCTURES**

When Servicing machine, be mindful of sharp edges on parts such as trimmed cable ties, hose clamps, cut reinforced hose and the edges of plates and brackets as they could cause cut, stab or puncture injuries.

## **SAFETY DECALS**

Understanding safety decals and their purpose assists in the safe operation of your sprayer.

Safety decals are there for your protection and it is the responsibility of the owner operator to replace damaged and/or missing safety decals.

Regularly review safety decals with operators. It is very important to ensure that all new machine components and replacement parts include current hazard identification decals.

Replacement safety decals can be ordered from all Goldacres dealers.



# General Information & Specifications

The Spotmate and Traymate sprayers are ideal for small acreage and hard to get areas. Our Spotmate and Traymate ranges feature 12 volt diaphragm pumps with pressure ranges from 40 - 100 Psi.

Our Spotmate and Traymate ranges are durable with tanks that are industrial grade UV protected polyethylene. Our range can be fitted with a host of booms and other handy options to make your spraying tasks easier.

## Know Your Sprayer

Getting to know your sprayer prior to operation is crucial in the safe and efficient operation of this equipment. Take the time to familiarise yourself with all the standard and optional components fitted to your sprayer, not only do you need to know where key components are located on your machine you need to become competent in the correct operation of these components prior to spraying operation.

It is also important to become familiar with common spraying methods and common spraying terms prior to using this sprayer for the first time

## Chassis

The chassis is an all steel construction. The chassis is shot blasted, primed and then protected by the Goldacres paint process for excellent chemical resistance and durability.

## Tank

All tanks are constructed from UV resistant polyethylene. Polyethylene tanks have a very high chemical resistance.

Due to the rotomoulding process, there can be a variance in the overall dimensions of the tank which in turn results in variations to the tank capacity. For this reason, calibration markings should be used as a guide only.

## Paint Colours

Steel work: G13 Dark Green

## Pump

The pump is critical to any sprayer performance. Correct operation and maintenance of the pump will ensure the sprayer is able to perform to its capabilities.

Make sure the pump wires are connected up to the correct terminals (red to positive, black to negative).

Always flush the pump with clean water after every use. Prolonged chemical contact can severely damage valves, diaphragms and seals.

Do not leave water in pump if sprayer is to be left in a cold environment. The water may freeze and cause damage to the pump. Empty the pump of all water and cover the pump to ensure this situation does not arise. If this has not been done, and there is a possibility there may be frozen water in the pump, wait until any ice has thawed before using the pump.

The 12 volt pumps are positive displacement diaphragm pumps which provide delivery upon demand.

They are self-priming and some models are fitted with a pressure switch which senses the outlet pressure of the pump. The pressure switch turns the electrical power off to the pump at a pre-determined high pressure point.

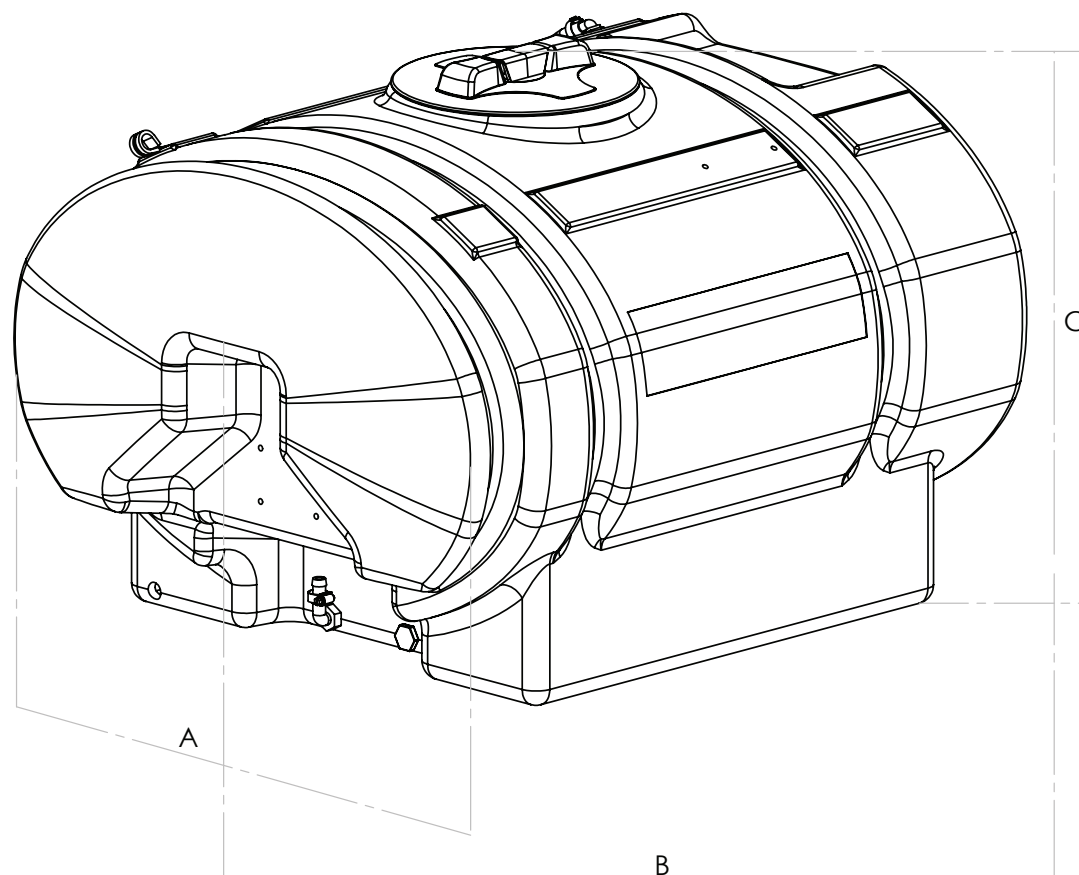
As the outlet side of the pump is opened, the pressure starts to drop and at a pre-determined point, contacts in the switch will close causing the pump to start automatically. The pump will then pump until the pressure reaches the shut-off pressure point.

## Machine limitations

All Goldacres equipment is subject to operating limitations, it is the operator's responsibility to ensure that this equipment is being operated within these limitations and appropriately to the operating conditions at hand.

## Identification

When ordering parts or requesting service information for your sprayer it is important to quote the serial number and the purchase date of your machine in order to receive accurate information.



SPOTMATE MODEL	A	B	C	WEIGHT
50L	460	600	420	13.75 kg
100L	530	820	490	23.16 kg
100L TRAILER	1160	1280	715	247.66kg
200L	725	860	595	31.84 kg

TRAYMATE MODEL	A	B	C	WEIGHT
100L	530	820	490	18.04 kg
200L	710	905	595	26.30 kg



# Operations and Sprayer Care

## Operation

### Connections

The following steps should be followed when connecting to a power source:

1. Ensure that the battery is 12V DC
2. Connect the red connector to the positive (+) terminal and the black connector to the negative (-) terminal.

### Filling

When filling the sprayer it is necessary to use an external water source and wear the appropriate PPE.

The following steps should be followed when filling the tank:

1. Turn the pump off.
2. Remove the tank lid.
3. Add chemical as required. When filling with water, after adding the chemical, some agitation will take place.
4. Use external water source to fill main tank (Do not exceed the tank capacity).
5. Replace the tank lid and ensure that it is secure prior to switching on the pump. You are now ready to use the sprayer.

## Calibration

All sprayers need to be calibrated and kept in good condition. This will ensure that the correct rate of chemical is applied to the target.

Follow these steps to calibrate the sprayer:

1. Measure the spray width of the nozzle on a dry surface (in metres).
2. Spray a test area at the intended pressure and speed. Record distance (in metres) covered in one minute (minute).
3. Measure the nozzle output in litres over one minute in a measuring jug (l/min).

The spray volume can be calculated by the following formula:

$$\text{Application rate (L/Ha)} = \frac{\text{Nozzle output (l/min)} \times 10,000}{\text{Spray width (m)} \times \text{speed (m/min)}}$$

## Spray Application

**NOTE:** It is the responsibility of the operator to ensure that the chemical mix is sufficiently agitated and that the conditions are right to start spraying. Operators must wear the appropriate PPE.

1. Switch pump on.
2. Allow pump to build pressure.
3. Engage the trigger on the spray lance to start spraying.
4. Adjust the nozzle pattern as required by rotating the nozzle in the appropriate direction as required.
5. Use a consistent speed or swath pattern to ensure even coverage of the target, or adjust the method of application according to your target.

## Agitation

Agitation should take place when filling or through tank bypass.

## Flushing

The following information is provided as a general guide for flushing your sprayer after a spray application

For more specific information regarding flushing, and decontamination, specific to the products that you are applying, it is recommended that you consult the chemical label or your chemical supplier.

1. Turn pump off
2. Drain main tank by removing drain plug
3. Add a quantity of fresh water to main tank and allow to drain through plug.
4. Replace plug and add a quantity of fresh water, and decontaminating agents if required, to main tank.
5. Turn on pump, and spray fresh water through the lance. This will ensure that fresh water has circulated through the pump and lance.
6. Drain remaining contents of fresh water and replace tank drain plug. The sprayer is now ready for storage.

## Storage

If the sprayer is to be stored for a long period of time without use, there are several tasks that need to be performed.

1. Clean the sprayer thoroughly as described under "flushing"
2. Store the sprayer out of direct sunlight and where it will not be affected by frosts
3. Ensure that the main tank is empty
4. Protect hoses and electrical connections

## Telescopic Lance

### Marolex

The telescopic Marolex lance is a lightweight spray gun designed for use with low pressure spraying systems. The lance is made of moulded polypropylene and aluminium for excellent chemical resistance and durability.



### Features:

- 85-135 cm telescopic lance with trigger handle and lock



## Maintenance & Troubleshooting

The troubleshooting information is provided as a reference when your sprayer is not functioning correctly.

To ensure that you receive the best possible service, it is recommended that you exhaust all applicable troubleshooting solutions shown prior to calling your dealer, or Goldacres, for service advice.

Problem	Possible Cause	Possible Remedy
Pump not priming	Valves damaged Restriction in suction line Restriction in delivery line Diaphragm damaged	Check, clean and/ or replace valve kit Check suction line Check delivery line Replace diaphragm
Pulsating liquid flow	Pump switching on and off due to pressure switch Pump sucking air	Alter settings of the pressure switch Alter the adjustable conejet nozzle Restricted pump delivery Check suction line
Pump pressure lower than expected	Suction filter screen blocked Restriction in suction line Valves damaged Diaphragm damaged Pump sucking air Insufficient voltage	Clean screen Check hoses, fittings and tank outlet Check/or replace valve kit Check/or replace diaphragm Check suction line Check power supply
Pump stopping and starting when not in use	Valves damaged Insufficient voltage Damaged diaphragm	Check valves Check power supply Check/or replace diaphragm





## Pump Will Not Start Check:

- Fuse or breaker
- For correct voltage ( $\pm 10\%$ ) and electrical connections
- Pressure switch operation and correct voltage at switch or motor wires (as equipped).
- Rectifier or motor for open or grounded circuit

Drive assembly locked

## Will Not Prime Check:

(No discharge/motor runs)

- Out of product
- Strainer for debris
- Inlet tubing/plumbing; severe vacuum leak
- Inlet/Outlet tube severely restricted (kinked)
- Debris in pump inlet/outlet valves
- Proper voltage with the pump operating ( $\pm 10\%$ )
- Pump housing for cracks

## Leaks From Pump Head Or Switch:

- For loose screws at switch or pump head.

- Switch diaphragm ruptured or pinched

- For punctured diaphragm if fluid is present at bottom drain holes.

## Pump Will Not Shut-Off Check:

(Pressure switch equip.)

- Output line closed and no leaks
- For air trapped in outlet line or pump head
- For correct voltage to pump ( $\pm 10\%$ )
- Inlet/Outlet valves for debris or swelling
- For loose drive assembly or pump head screws
- Pressure switch operation/adjustment incorrect. Refer to relevant pump manual for differential and pressure adjustment procedure.

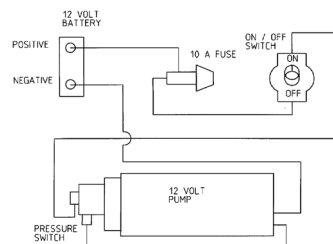
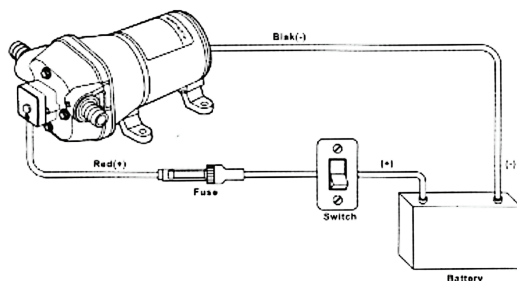
## Noisy / Rough Operation Check:

- Mounting feet that are compressed to tight
- For loose pump head or drive screws
- Does the mounting surface multiply noise (flexible)
- Is the pump plumbed with rigid pipe causing noise to transmit

## Pump Wiring

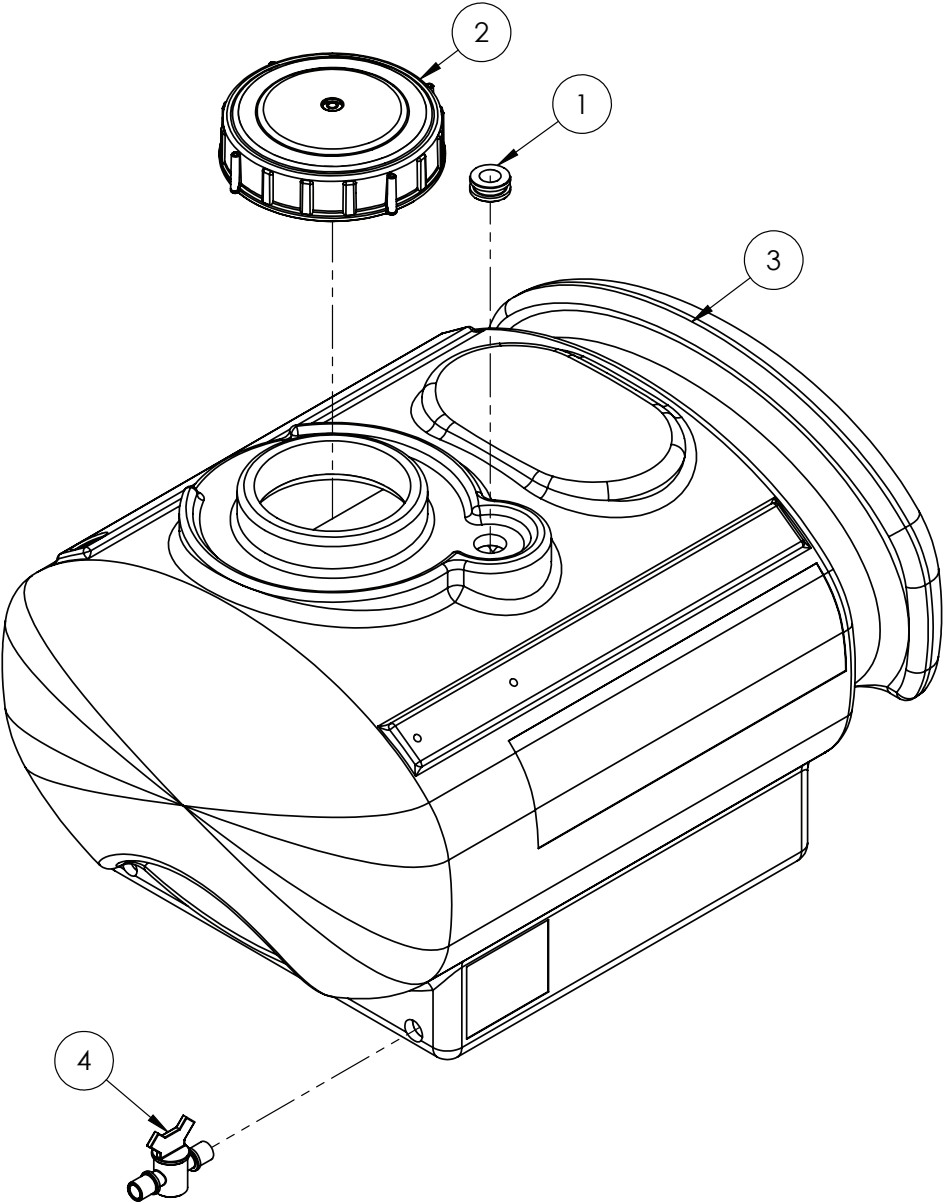
**Important:** Use 14 gauge stranded wire up to 6 metres from power source and 12 gauge up to 18 metres from power source.


Connect Red to Positive (+) terminal and Black (-) terminal.

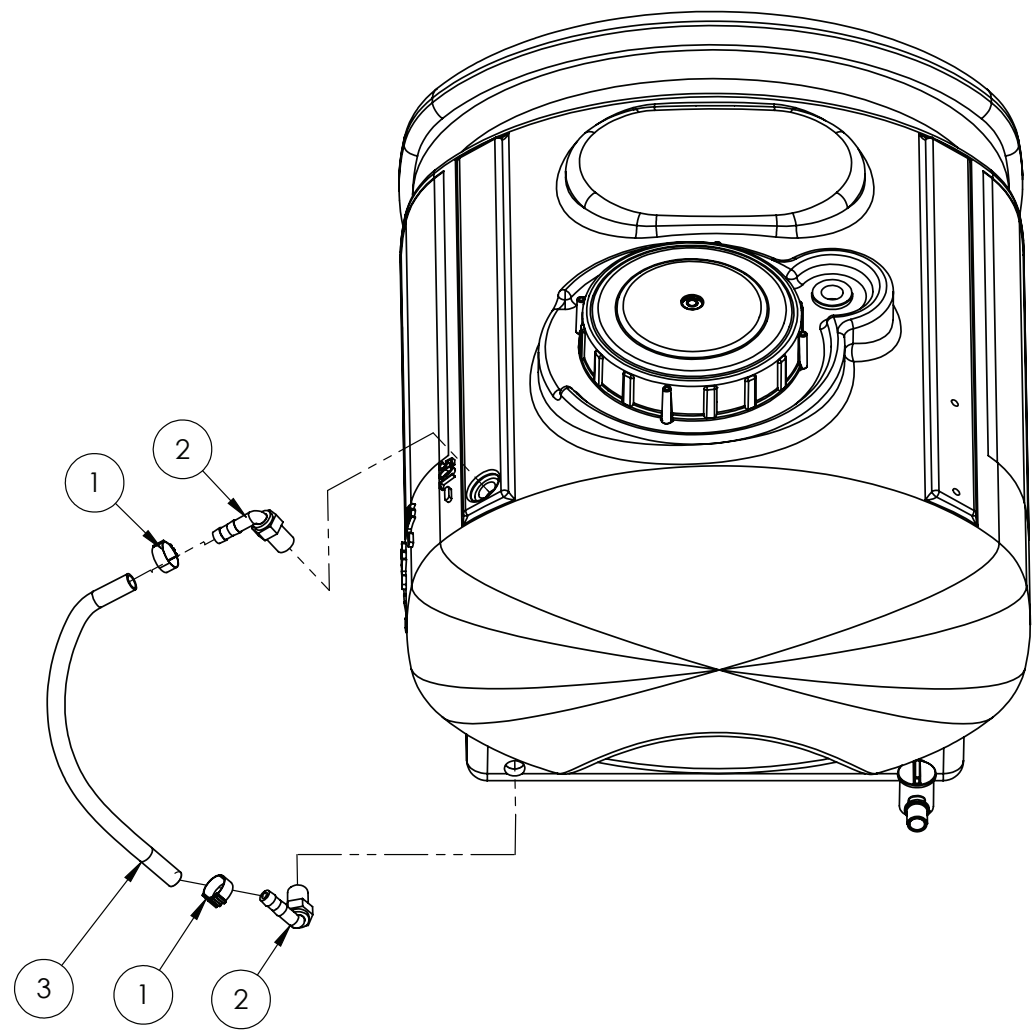





# Spotmate, 50L, Tank and Lid



IF DESCRIPTION PREFIX IS ASSEMBLY DRAWING ONLY OR PRODUCTION DRAWING ONLY THE ITEM IS NOT FOR SALE			
ITEM	PART NUMBER	DESCRIPTION	QTY
1	GA5070770	GROMMET 16 X 6.4 X 25.4 WIRING	1
2	GA5076883	SMALL LID, 6", WITH SPRING BREATHER, ARAG, 3542010	1
3	GA8500032	TANK, 50L, SPOTMATE, MY21	1
4	GA5024265	TAP, PLASTIC, 1/2" MALE X 1/2" MALE BSP THREAD	1
GA6500025		TANK ASSEMBLY, 50L SPOTMATE, MY24	REV 00
 GOLDACRES			

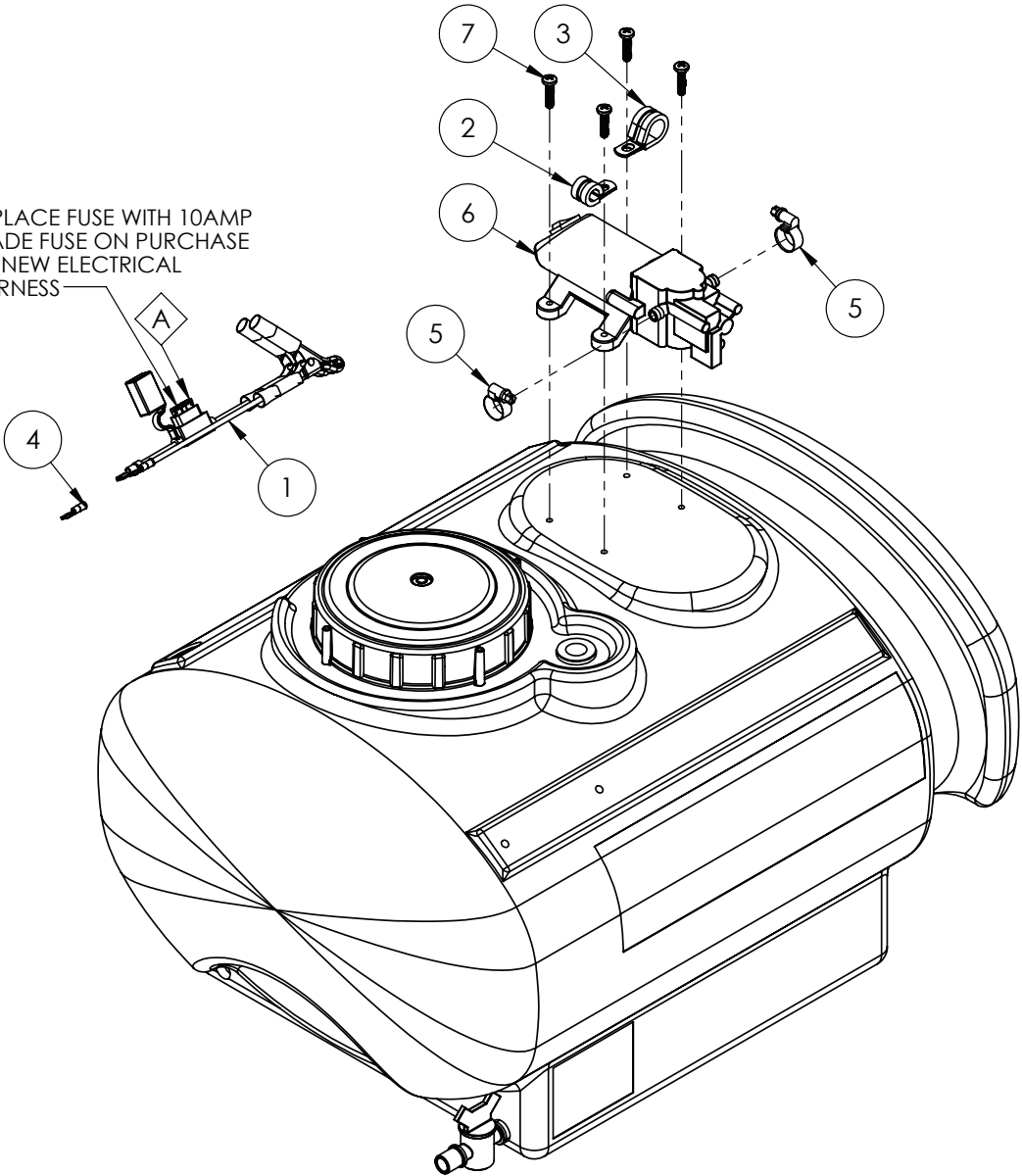


IF DESCRIPTION PREFIX IS ASSEMBLY DRAWING ONLY OR PRODUCTION DRAWING ONLY THE ITEM IS NOT FOR SALE			
ITEM	PART NUMBER	DESCRIPTION	QTY
1	GA5007231	COBRA CLAMP 15/8 W4 VPE, 108 7006 015	2
2	GA5077701	HOSE BARB, ELBOW, 90 DEGREE, 3/8 MALE THREAD NPT X 3/8 HOSE, BANJO	2
3	GA2000207	SIGHT TUBE, 10mm CLEAR TUBE, 350mm CUT	1
GA6500025		TANK ASSEMBLY, 50L SPOTMATE, MY24	REV 00
 GOLDACRES			



# Spotmate, 50L, Pump and Electrical Harness

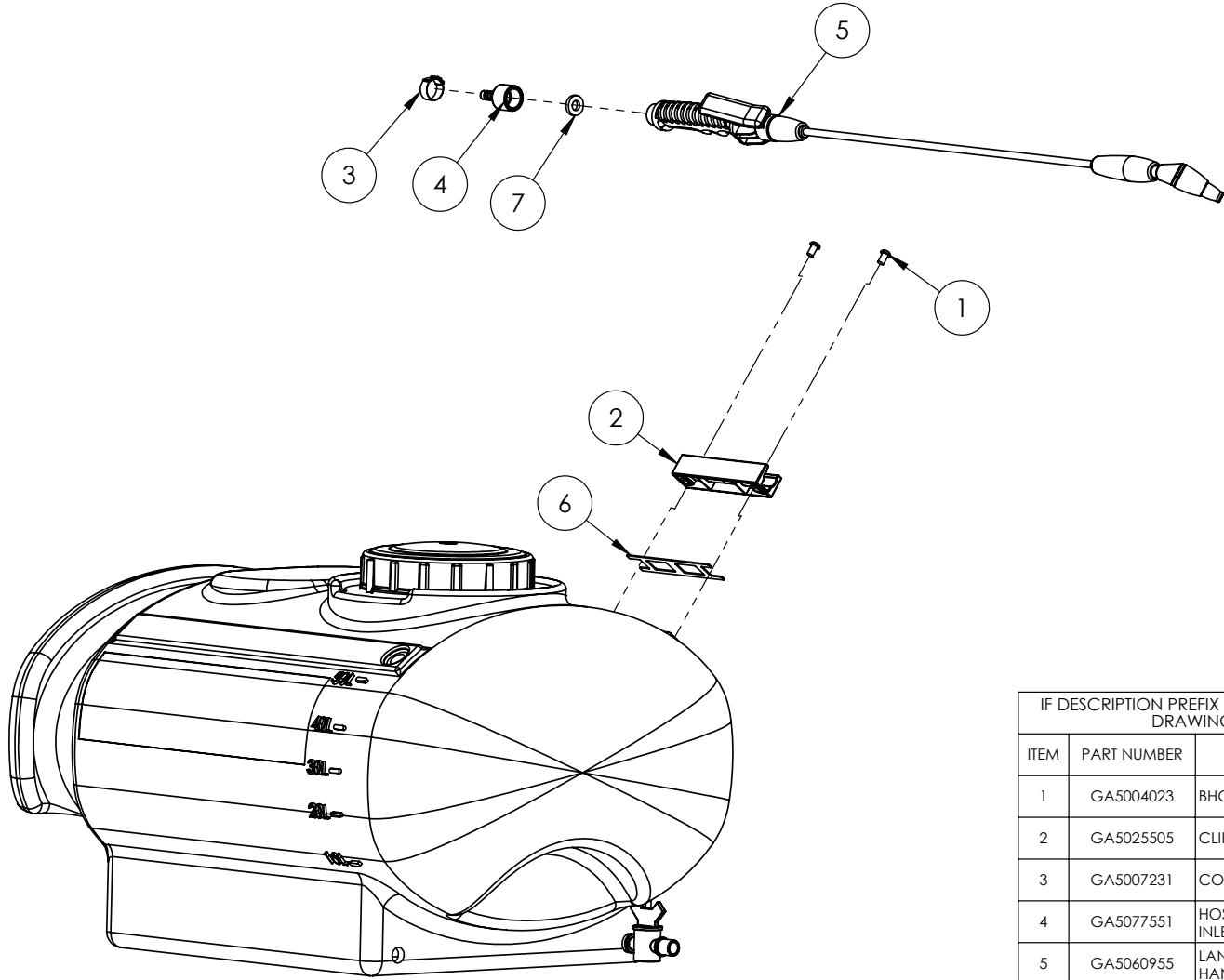
REPLACE FUSE WITH 10AMP  
BLADE FUSE ON PURCHASE  
OF NEW ELECTRICAL  
HARNESS




REPLACEMENT PARTS			
ITEM	PART NUMBER	DESCRIPTION	QTY
A	GA5011981	FUSE, BLADE, 10 AMP (52810)	-

IF DESCRIPTION PREFIX IS ASSEMBLY DRAWING ONLY OR PRODUCTION DRAWING ONLY THE ITEM IS NOT FOR SALE			
ITEM	PART NUMBER	DESCRIPTION	QTY
1	GA5022255	ELECTRICAL HARNESS, IN LINE FUSE & ALLIGATOR CLIPS, 5m, SUIT 12 VOLT SPRAYERS	1
2	GA5050120	10mm RUBBER LINED HOSE CLAMP	1
3	GA5049825	19mm RUBBER LINED HOSE CLAMP	1
4	GA5013621	CONNECTOR FEMALE BLADE NARVA (6.3mm BLUE)	1
5	GA5004865	HOSE CLAMP 8-16mm	2
6	GA5055700	PUMP, 12 VOLT, 3.8L/MIN, 40 PSI	1
7	GA5000527	SCREW PAN HEAD 12G X 25mm SS	4
GA6500025		TANK ASSEMBLY, 50L SPOTMATE, MY24	REV 00
 <b>GOLDACRES</b>			

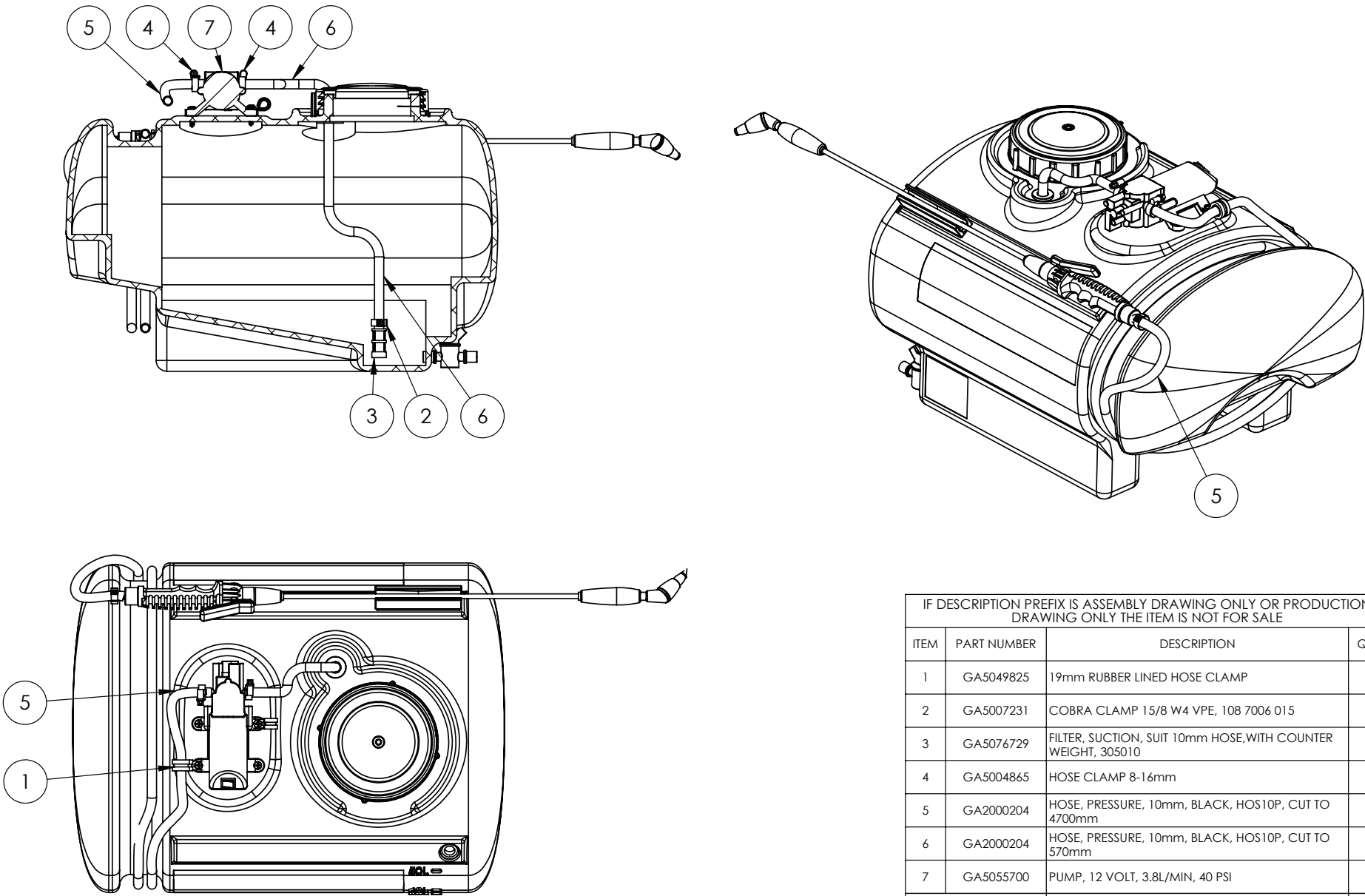
# Spotmate, 50L, Lance and Lance Holder




IF DESCRIPTION PREFIX IS ASSEMBLY DRAWING ONLY OR PRODUCTION DRAWING ONLY THE ITEM IS NOT FOR SALE			
ITEM	PART NUMBER	DESCRIPTION	QTY
1	GA5004023	BHCS M6 X 10 SS A2-70	2
2	GA5025505	CLIP, MAROLEX LANCE HOLDER, MY21	1
3	GA5007231	COBRA CLAMP 15/8 W4 VPE, 108 7006 015	1
4	GA5077551	HOSE BARB, FEMALE THREAD SUIT 50800 LANCE INLET X 3/8 HOSE, TEEJET, CP50786-PP-406	1
5	GA5060955	LANCE, TELESCOPIC, 135cm, ALUMINIUM, WITH HANDLE, MAROLEX	1
6	GA4414675	PLATE, SHIM, LANCE HOLDER	1
7	GA5055245	WASHER, NOZZLE CAP SEAL, RUBBER, 19 OD X 9 ID, SUIT TEE JET NOZZLE, REPLACES CP19438-EPR	1
GA6500025		TANK ASSEMBLY, 50L SPOTMATE, MY24	REV 00
 GOLDACRES			

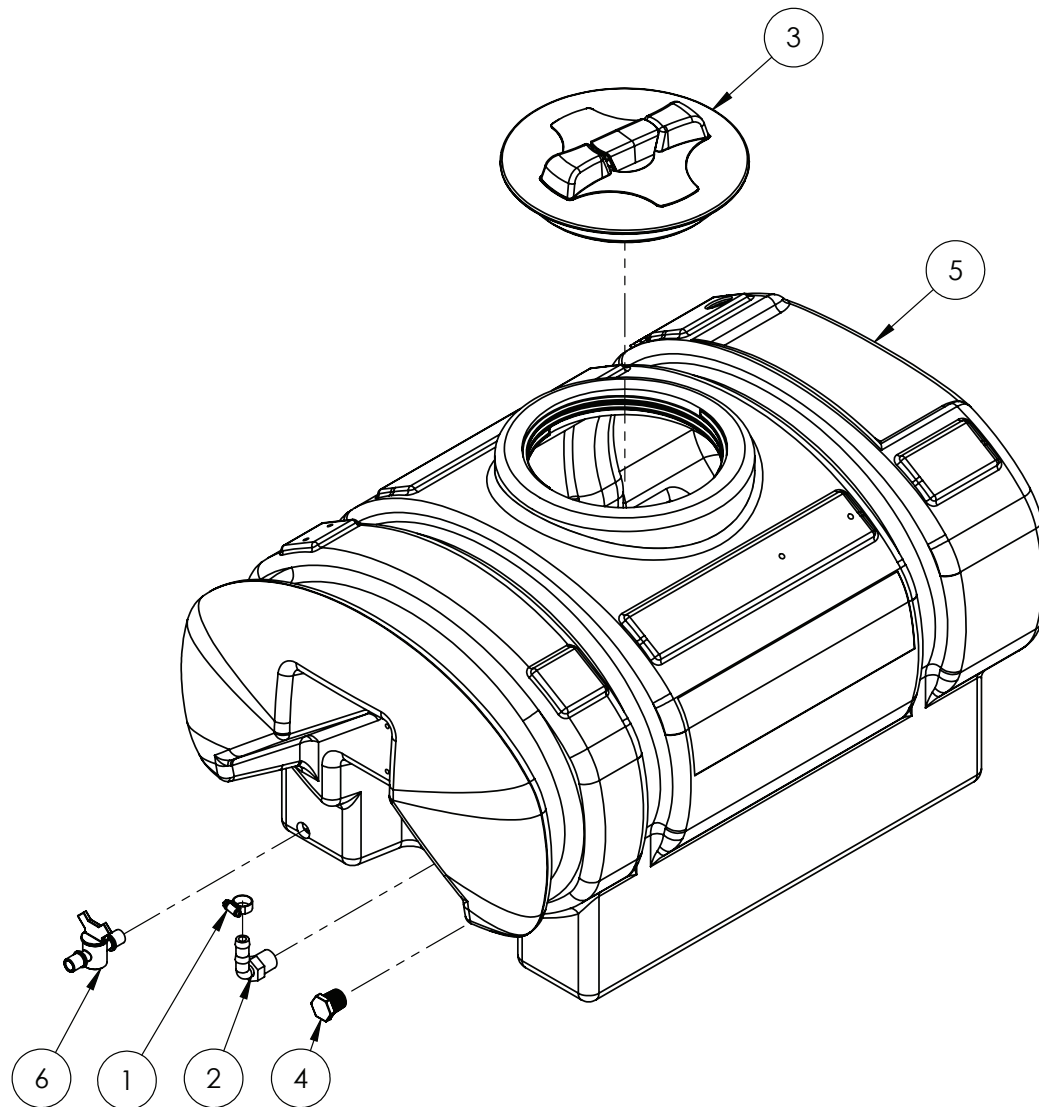



# Spotmate, 50L, Hoses



IF DESCRIPTION PREFIX IS ASSEMBLY DRAWING ONLY OR PRODUCTION DRAWING ONLY THE ITEM IS NOT FOR SALE			
ITEM	PART NUMBER	DESCRIPTION	QTY
1	GA5049825	19mm RUBBER LINED HOSE CLAMP	1
2	GA5007231	COBRA CLAMP 15/8 W4 VPE, 108 7006 015	2
3	GA5076729	FILTER, SUCTION, SUIT 10mm HOSE, WITH COUNTER WEIGHT, 305010	1
4	GA5004865	HOSE CLAMP 8-16mm	2
5	GA2000204	HOSE, PRESSURE, 10mm, BLACK, HOS10P, CUT TO 4700mm	1
6	GA2000204	HOSE, PRESSURE, 10mm, BLACK, HOS10P, CUT TO 570mm	1
7	GA5055700	PUMP, 12 VOLT, 3.8L/MIN, 40 PSI	1
GA6500025		TANK ASSEMBLY, 50L SPOTMATE, MY24	REV 00
			

# Spotmate, 100L, Tank and Lid

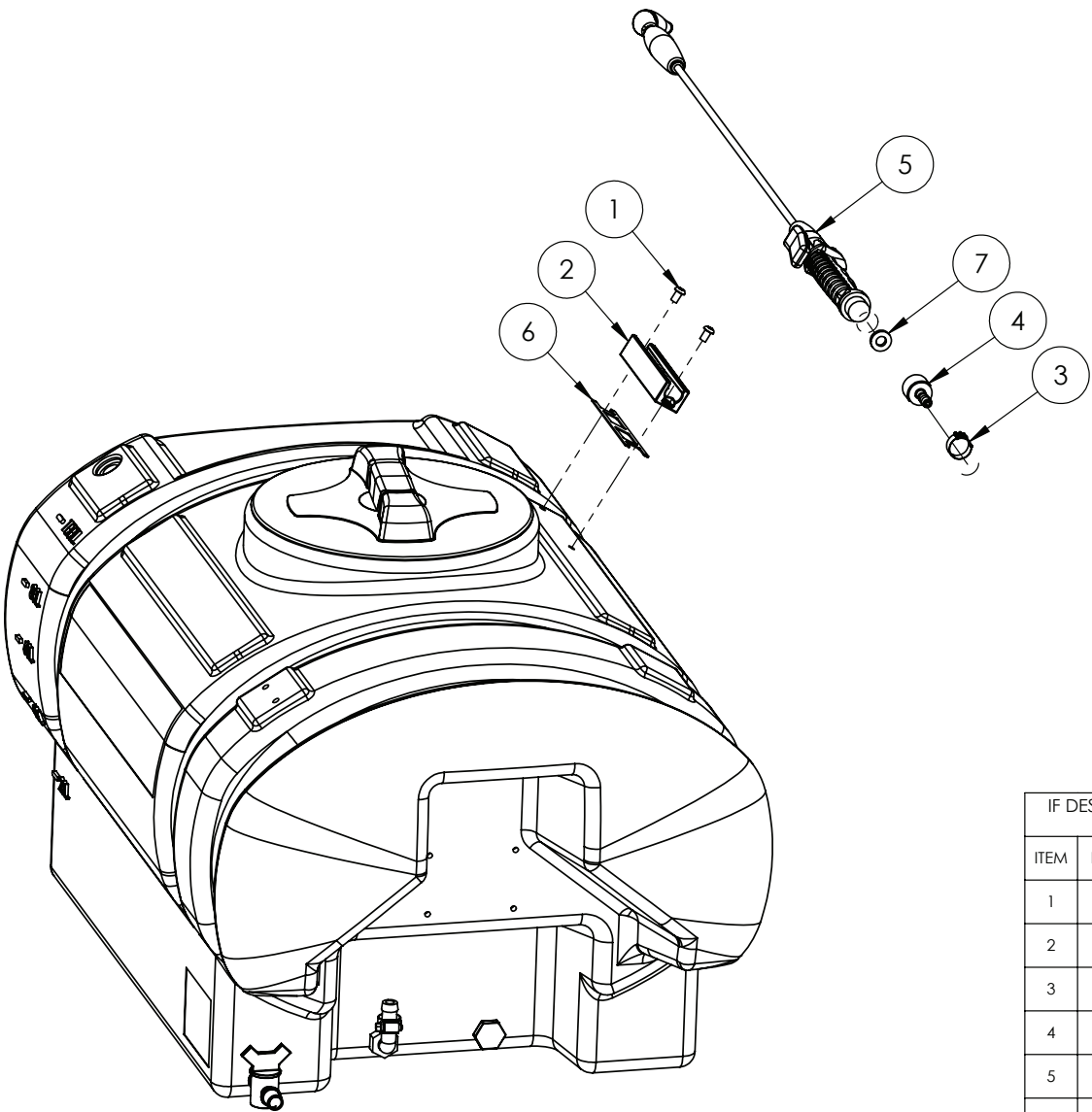


IF DESCRIPTION PREFIX IS ASSEMBLY DRAWING ONLY OR PRODUCTION DRAWING ONLY THE ITEM IS NOT FOR SALE			
ITEM	PART NUMBER	DESCRIPTION	QTY
1	GA5000469	HOSE CLAMP, 1/2" SS 12-20/9W3	1
2	GA5077708	HOSE BARB, ELBOW, 90 DEGREE, 1/2 MALE THREAD X 1/2 HOSE, BANJO, HB050-90	1
3	GA5076882	LID, TANK, 255 DIAMETER, WITH BREATHER, 3522221	1
4	GA5077943	PLUG, 1/2 MALE THREAD, BANJO	1
5	GA8500033	TANK, 100L, SPOTMATE TRAYMATE, MY21	1
6	GA5024265	TAP, PLASTIC, 1/2" MALE X 1/2" MALE BSP THREAD	1
GA6500026  GOLDACRES			REV 00
TANK ASSEMBLY, 100L SPOTMATE, MY24			

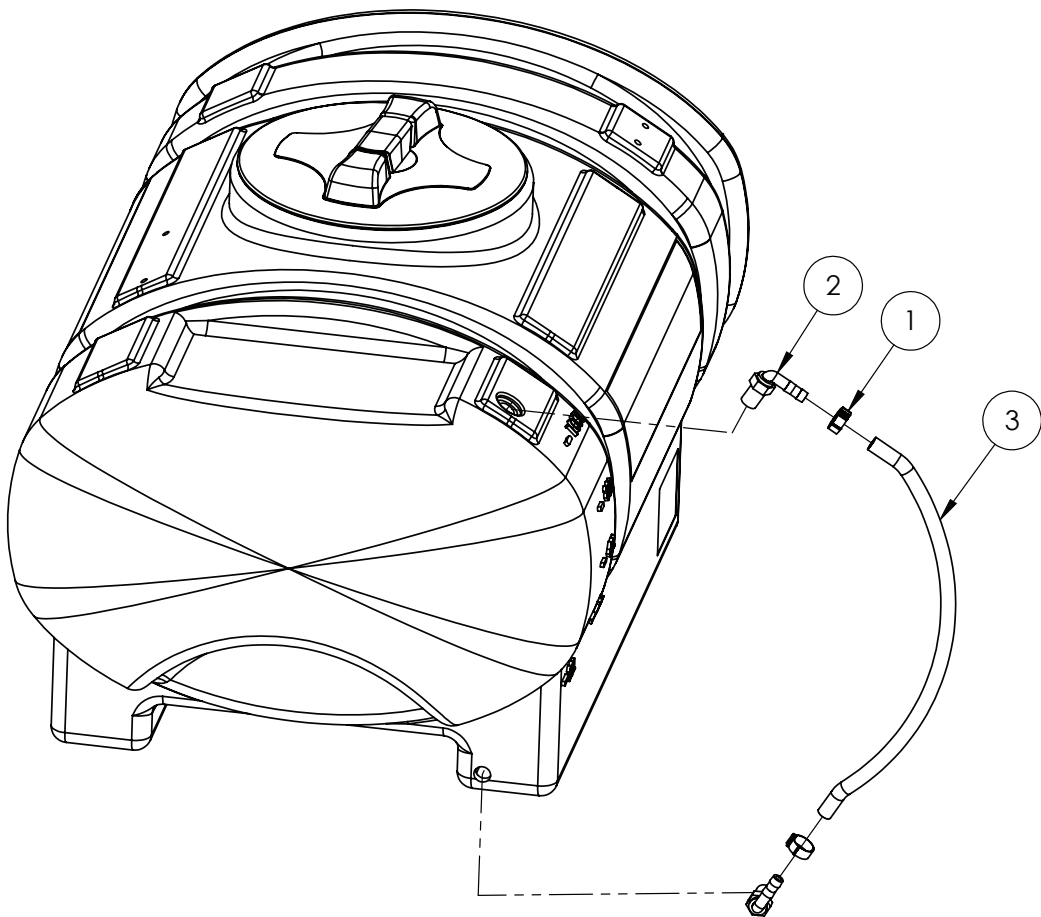





# Spotmate, 100L, Lance and Lance Holder



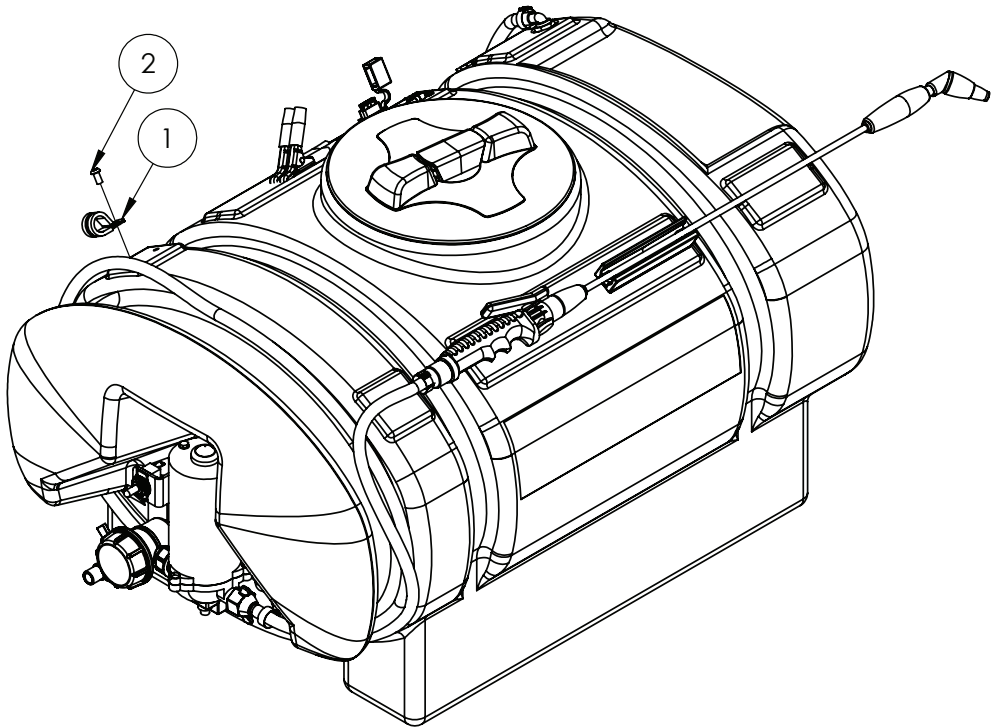
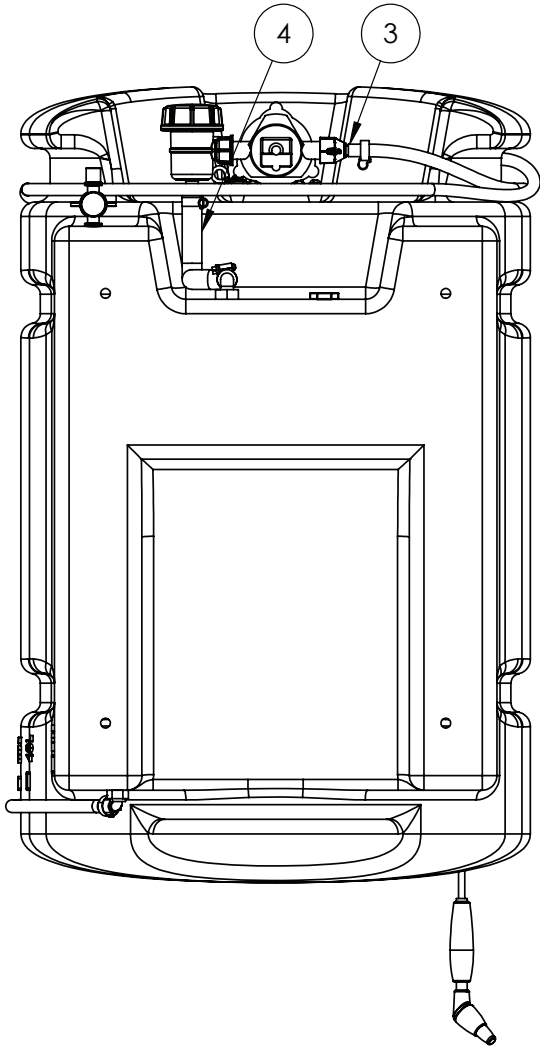
IF DESCRIPTION PREFIX IS ASSEMBLY DRAWING ONLY OR PRODUCTION DRAWING ONLY THE ITEM IS NOT FOR SALE			
ITEM	PART NUMBER	DESCRIPTION	QTY
1	GA5004023	BHCS M6 X 10 SS A2-70	2
2	GA5025505	CLIP, MAROLEX LANCE HOLDER, MY21	1
3	GA5007231	COBRA CLAMP 1 5/8 W4 VPE, 108 7006 015	1
4	GA5077551	HOSE BARB, FEMALE THREAD SUIT 50800 LANCE INLET X 3/8 HOSE, TEEJET, CP50786-PP-406	1
5	GA5060955	LANCE, TELESCOPIC, 135cm, ALUMINIUM, WITH HANDLE, MAROLEX	1
6	GA4414675	PLATE, SHIM, LANCE HOLDER	1
7	GA5055245	WASHER, NOZZLE CAP SEAL, RUBBER, 19 OD X 9 ID, SUIT TEE JET NOZZLE, REPLACES CP19438-EPR	1
GA6500026		TANK ASSEMBLY, 100L SPOTMATE, MY24	REV 00
 GOLDACRES			




IF DESCRIPTION PREFIX IS ASSEMBLY DRAWING ONLY OR PRODUCTION DRAWING ONLY THE ITEM IS NOT FOR SALE			
ITEM	PART NUMBER	DESCRIPTION	QTY
1	GA5007231	COBRA CLAMP 15/8 W4 VPE, 108 7006 015	2
2	GA5077701	HOSE BARB, ELBOW, 90 DEGREE, 3/8 MALE THREAD NPT X 3/8 HOSE, BANJO	2
3	GA2000207	SIGHT TUBE, 10mm CLEAR TUBE, 435mm CUT	1
GA6500026		TANK ASSEMBLY, 100L SPOTMATE, MY24	REV
 GOLDACRES			00

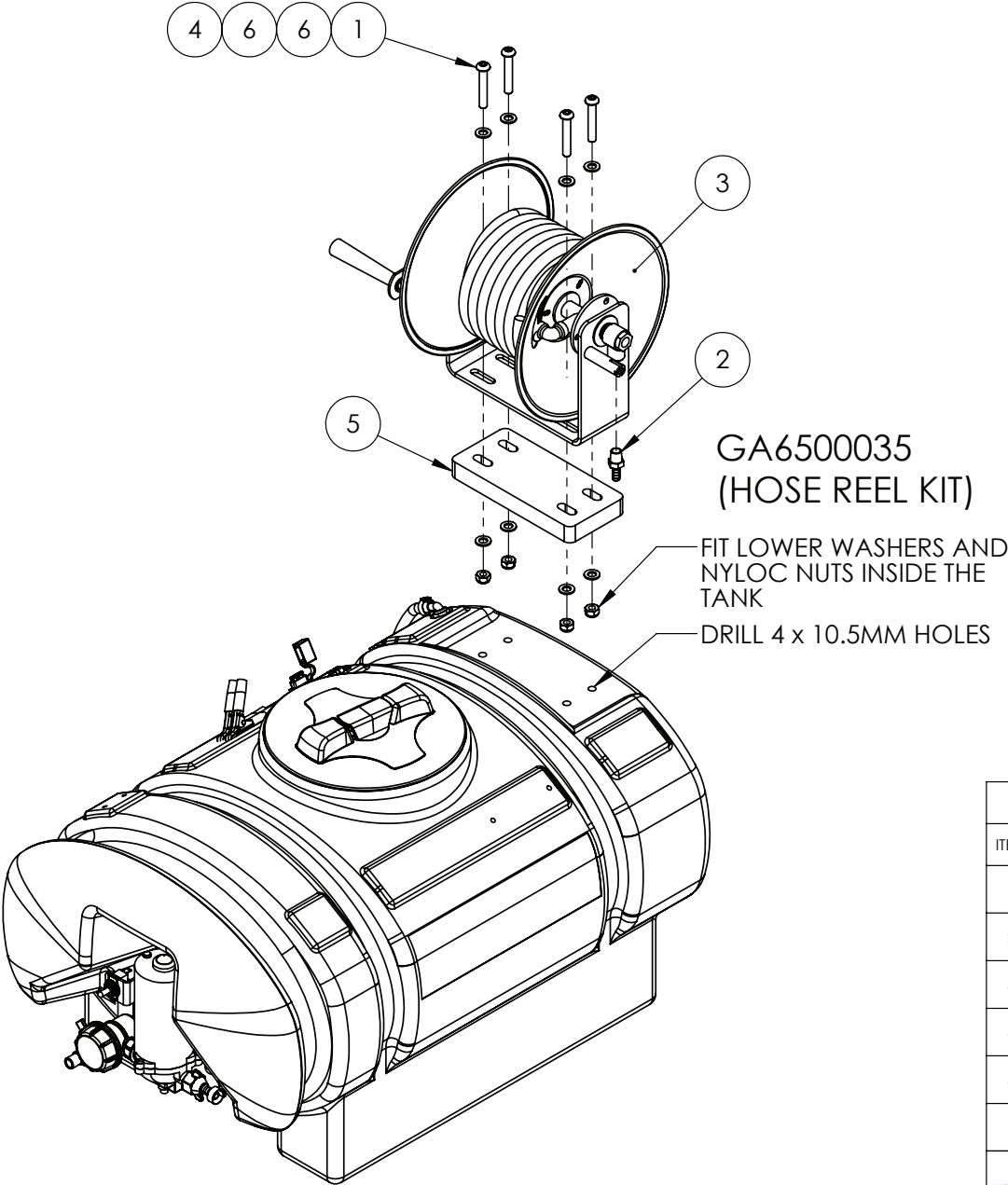



# Spotmate, 100L, Hoses



IF DESCRIPTION PREFIX IS ASSEMBLY DRAWING ONLY OR PRODUCTION DRAWING ONLY THE ITEM IS NOT FOR SALE			
ITEM	PART NUMBER	DESCRIPTION	QTY
1	GA5049825	19mm RUBBER LINED HOSE CLAMP	1
2	GA5004031	BHCS M6 X 12 GR12.9 ZP	1
3	GA2000204	HOSE, PRESSURE, 10mm, BLACK, HOS10P, CUT TO 4500mm	1
4	GA2000211	HOSE, PRESSURE, 12mm, BLACK, 250PSI, HOS13P, CUT TO 180mm	1
GA6500026		TANK ASSEMBLY, 100L SPOTMATE, MY24	REV 00
 GOLDACRES			

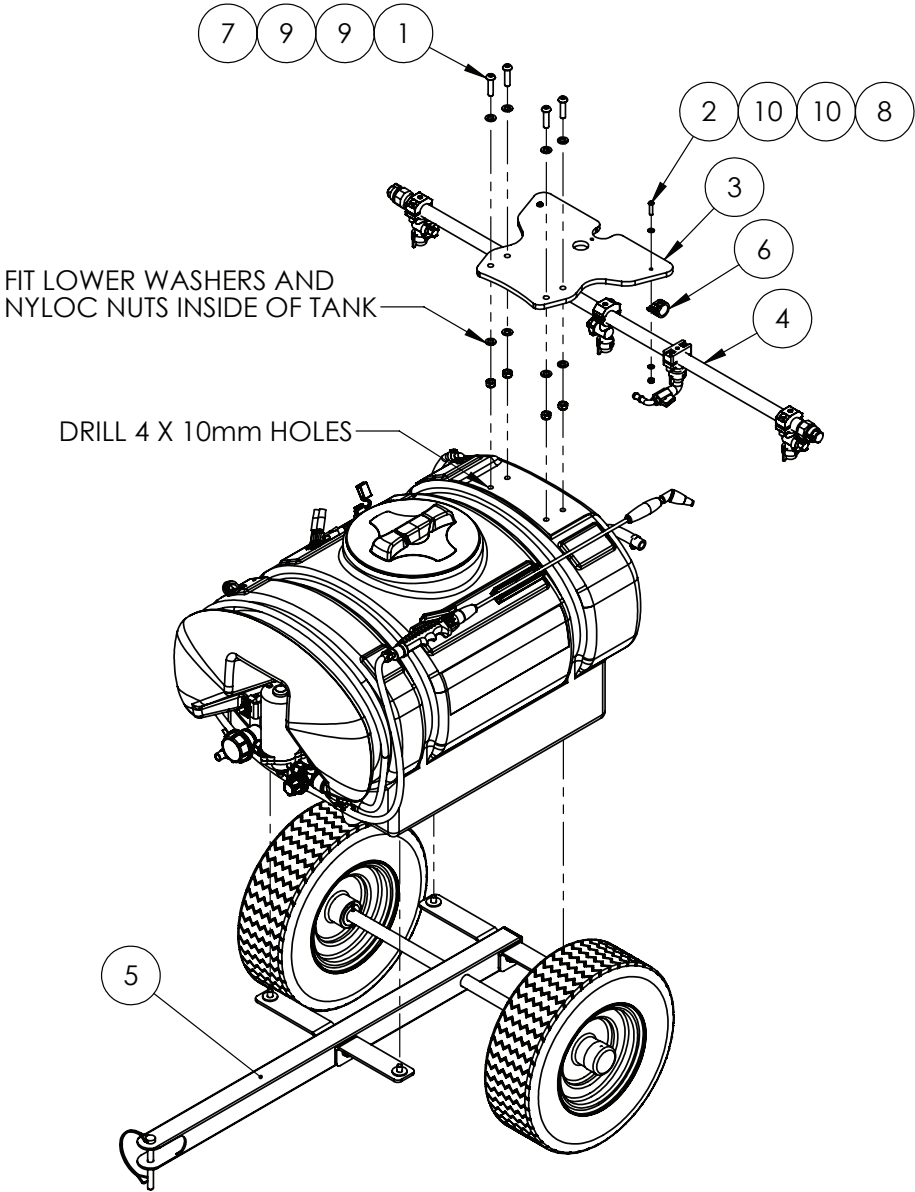
# Spotmate, 100L, with Optional 15mt Hose Reel



IF DESCRIPTION PREFIX IS ASSEMBLY DRAWING ONLY OR PRODUCTION DRAWING ONLY THE ITEM IS NOT FOR SALE			
ITEM	PART NUMBER	DESCRIPTION	QTY
1	GA5072300	BHCS M10 X 60 SS A2-70	4
2	GA2000567	HOSE BARB, STRAIGHT, 3/8 BSPT MALE X 3/8 HOSE, BRASS, BFP3-0606	1
3	GA5066085	HOSE REEL, MANUAL, 3/8" 15m HOSE, CHEMICAL & WATER	1
4	GA5051445	NUT M10 NYLOC SS	4
5	GA5074575	SPACER BLOCK, SUIT HOSE REEL, MANUAL, 3/8" 15m HOSE, GA5066085	1
6	GA5000117	WASHER M10 FLAT SS HD	8
GA6500026		TANK ASSEMBLY, 100L SPOTMATE, MY24	REV 00
			

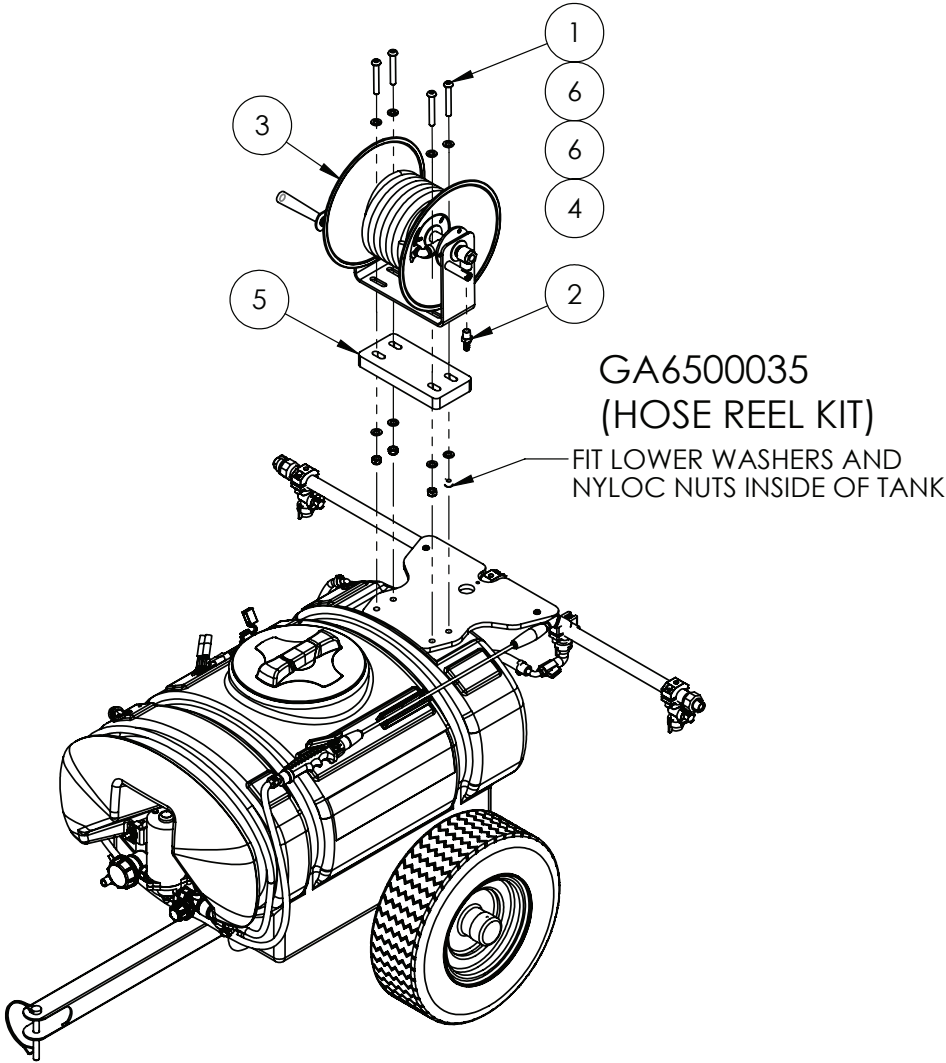


# Spotmate Trailer, 100L



IF DESCRIPTION PREFIX IS ASSEMBLY DRAWING ONLY OR PRODUCTION DRAWING ONLY THE ITEM IS NOT FOR SALE			
ITEM	PART NUMBER	DESCRIPTION	QTY
1	GA5006061	BHCS M10 X 40 SS A2-70	4
2	GA5004067	BHCS M6 X 25 SS A2-70	2
3	GA4410790	BOOM SUPPORT, SPOTMATE TRAILER, 100L, MY18	1
4	GA4949175	BOOM, SPOTMATE, 3 JET	1
5	GA4914235	CHASSIS, SPOTMATE TRAILER, 100L, MY18	1
6	GA5049830	CLAMP P 27 mm 56485	2
7	GA5051445	NUT M10 NYLOC SS	4
8	GA5048115	NUT M6 NYLOC ZP	2
9	GA5000117	WASHER 10mm FLAT SS HD	8
10	GA5004437	WASHER 6mm FLAT SS	4
GA6500034		SPOTMATE TRAILER, 100L, 12V PUMP, MY24	REV 00

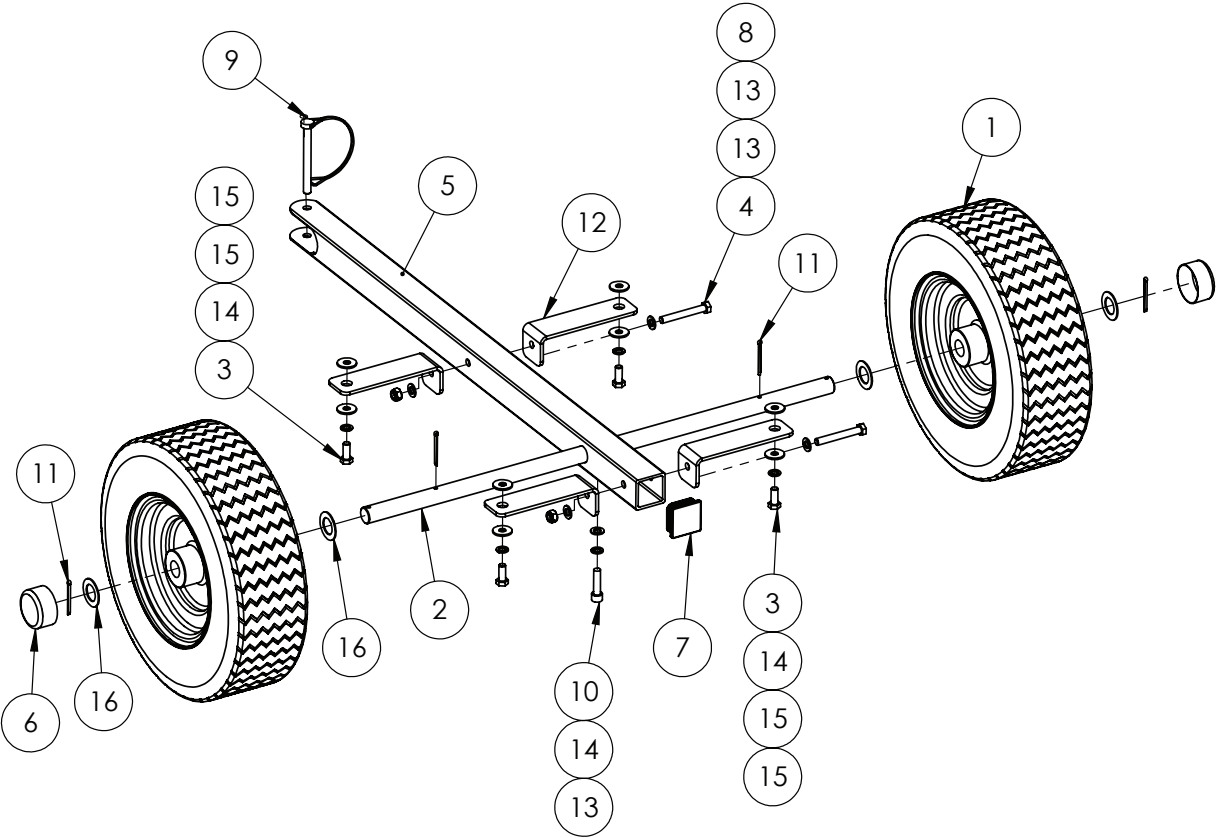
# Spotmate Trailer, 100L with Optional 15mt Hose Reel




IF DESCRIPTION PREFIX IS ASSEMBLY DRAWING ONLY OR PRODUCTION DRAWING ONLY THE ITEM IS NOT FOR SALE			
ITEM	PART NUMBER	DESCRIPTION	QTY
1	GA0500005	BHCS M10 X 70 SS	4
2	GA2000567	HOSE BARB, STRAIGHT, 3/8 BSPT MALE X 3/8 HOSE, BRASS, BFP3-0606	1
3	GA5066085	HOSE REEL, MANUAL, 3/8" 15m HOSE, CHEMICAL & WATER	1
4	GA5051445	NUT M10 NYLOC SS	4
5	GA5074575	SPACER BLOCK, SUIT HOSE REEL, MANUAL, 3/8" 15m HOSE, GA5066085	1
6	GA5000117	WASHER 10mm FLAT SS HD	8
GA6500034		SPOTMATE TRAILER, 100L, 12V PUMP, MY24	REV 00



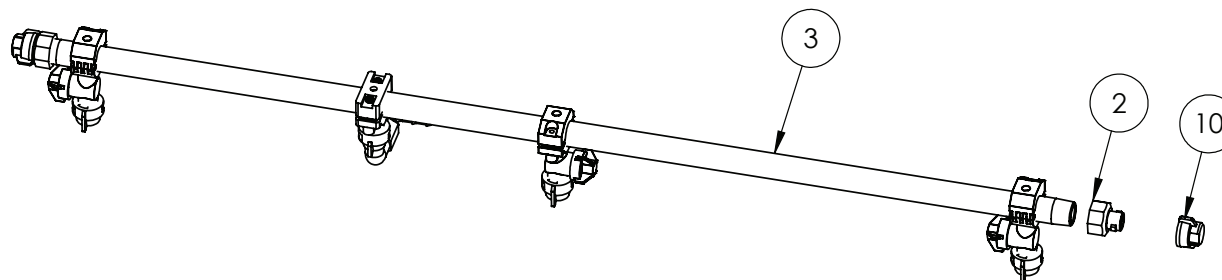
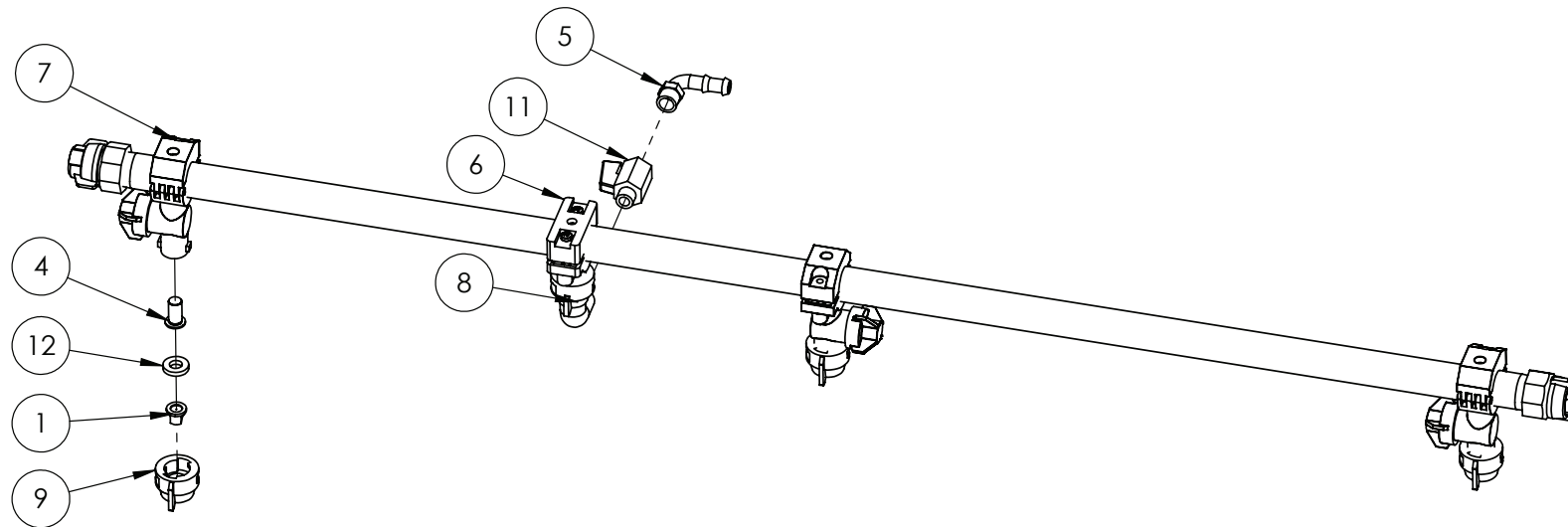
# Spotmate, 100L, Trailer Assembly




IF DESCRIPTION PREFIX IS ASSEMBLY DRAWING ONLY OR PRODUCTION DRAWING ONLY THE ITEM IS NOT FOR SALE			
ITEM	PART NUMBER	DESCRIPTION	QTY
1	GA5000937	16 X 6.5 - 8 TURF TYRES	2
2	GA4701345	AXLE, SPOTMATE TRAILER, 100L, MY18	1
3	GA5006161	BOLT M10 X 25 GR8.8 ZP	4
4	GA5006073	BOLT M10 X 75 GR8.8 ZP	2
5	GA4701340	CHASSIS CENTRE, SPOTMATE TRAILER, 100L, MY18	1
6	GA5055860	END CAP, BLACK, VINYL, SPOTMATE TRAILER	2
7	GA5024720	END CAP, PLASTIC, BLACK, INSERT, RHS. 50 X 50, 2.4 - 4.0mm WALL	1
8	GA5000141	NUT M10 NYLOC ZP	2
9	GA5048380	PIN SHAFT LOCKING 11mm	1
10	GA5006141	SHCS M10 X 40 GR12.9 ZP	1
11	GA5015681	SPLIT COTTER PIN M4 X 50 ZP	4
12	GA4541995	TANK SUPPORT, SPOTMATE TRAILER, 100L, MY18	4
13	GA5000117	WASHER 10mm FLAT SS HD	5
14	GA5000137	WASHER 10mm SPRING SS	5
15	GA5002627	WASHER 3/8 ID X 1 1/8 OD HIGH TENSILE	8
16	GA5078844	WASHER, AXLE, SPOTMATE TRAILER	4
GA4914235		CHASSIS, SPOTMATE TRAILER, 100L, MY18	REV 02
 GOLDACRES			



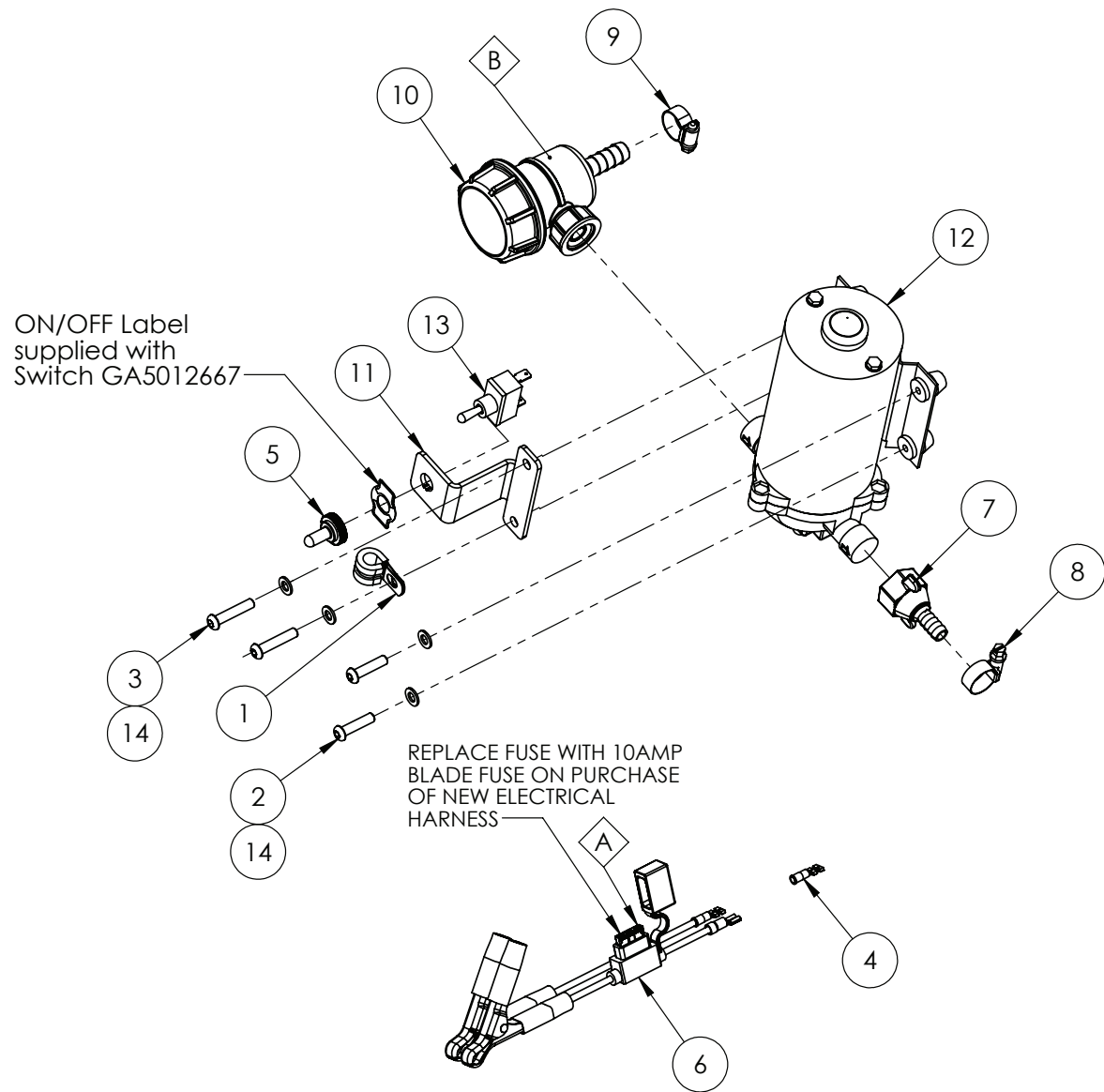
# Spotmate Trailer, 100L, Boom Assembly




IF DESCRIPTION PREFIX IS ASSEMBLY DRAWING ONLY OR PRODUCTION DRAWING ONLY THE ITEM IS NOT FOR SALE			
ITEM	PART NUMBER	DESCRIPTION	QTY
1	GA8100430	AIXR TEEJET, VIOLET 025, POLYMER, AIXR110025VP	3
2	GA5076904	ADAPTER, BOOM FLUSH, 3/4 FEMALE QUICK FITTING, 400278	2
3	GA2000506	BOOM LINE, POLY, 3/4, 1100 LONG, 3 HOLES, 500mm SPACING	1
4	GA5077159	FILTER, NOZZLE TIP, RED, 50 MESH, POLYPROPYLENE & SS, TEEJET, 8079-PP-50	3
5	GA5077693	HOSE BARB, ELBOW, 90 DEGREE, 1/4 MALE THREAD X 1/2 HOSE, BANJO, HB025/050-90	1
6	GA5077989	NOZZLE BODY, SINGLE, 3/4, NO SPRAY STOP, TEEJET, QJ7421-3/4-NYB	1
7	GA5077964	NOZZLE BODY, SINGLE, 3/4, TEEJET, QJ17560A-3/4-NYB	3
8	GA5077986	NOZZLE CAP & WASHER, 90 DEGREE CAP, 1/4" NPT FEMALE OUTLET, TEEJET, QJ4676-90-1/4-NYR	1
9	GA8100464	NOZZLE CAP, NYLON, BLACK, TEEJET, SUIT FLAT SPRAY SMALLER CAPACITY NOZZLES (UP TO 08), CP25611-1-NY	3
10	GA5076913	NOZZLE CAP, QUICK FIT, SUIT ASJ AND ALBUZ, ARAG, 402901	2
11	GA5018323	VALVE, BALL, 1/4 MALE, FEMALE, BLACK LEVER HANDLE, CHROMED	1
12	GA5055245	WASHER, NOZZLE CAP SEAL, RUBBER, 19 OD X 9 ID, SUIT TEE JET NOZZLE, REPLACES CP19438-EPR	3
GA4949175		BOOM, SPOTMATE, 3 JET	REV 03
 GOLDACRES			



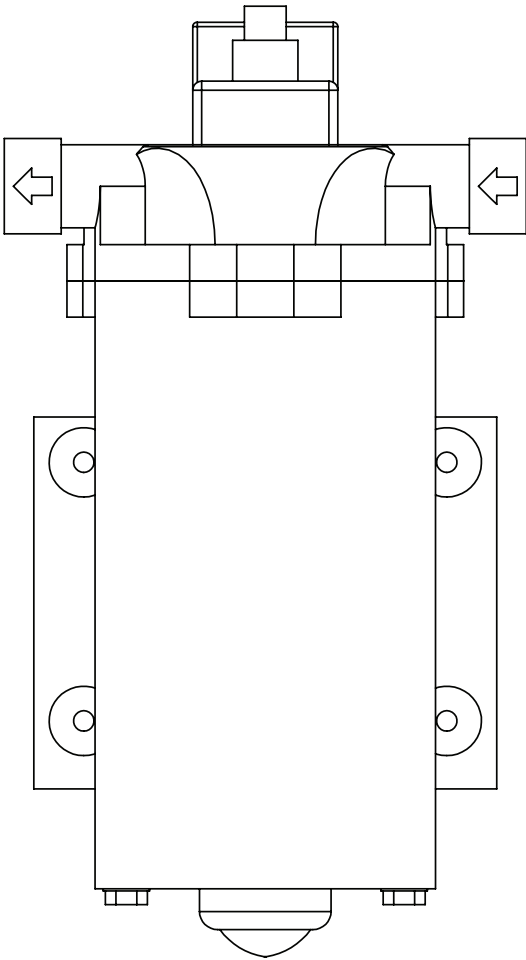
# Spotmate, 100L - 200L Pump Assembly




REPLACEMENT PARTS			
ITEM	PART NUMBER	DESCRIPTION	QTY
A	GA5011981	FUSE, BLADE, 10 AMP (52810)	-
B	GA5078921	FILTER ELEMENT, 50 MESH, SUIT, ARAG, MINI SUCTION FILTER, 3242003.030	-

IF DESCRIPTION PREFIX IS ASSEMBLY DRAWING ONLY OR PRODUCTION DRAWING ONLY THE ITEM IS NOT FOR SALE			
ITEM	PART NUMBER	DESCRIPTION	QTY
1	GA5050120	10mm RUBBER LINED HOSE CLAMP	1
2	GA5004067	BHCS M6 X 25 SS A2-70	2
3	GA5004075	BHCS M6 X 30 SS A2-70	2
4	GA5013621	CONNECTOR FEMALE BLADE NARVA (6.3mm BLUE)	1
5	GA5012175	COVER, TOGGLE SWITCH, WATERPROOF, NARVA	1
6	GA5022255	ELECTRICAL HARNESS, IN LINE FUSE & ALLIGATOR CLIPS, 5m, SUIT 12 VOLT SPRAYERS	1
7	GA5025520	HOSE BARB, STRAIGHT 1/2" NPT (F) TO 3/8" HB, SHURFLO (244-2916)	1
8	GA5004865	HOSE CLAMP 8-16mm	1
9	GA5000469	HOSE CLAMP, 1/2" SS 12-20/9W3	1
10	GA5025510	MINI SUCTION FILTER, 1/2" NPT TO 1/2" HOSE BARB, ARAG (309TB53)	1
11	GA4508135	PLATE, SWITCH MOUNT FOR 12V SPRAYERS, 2mm S/S	1
12	GA5023400	PUMP, 12 VOLT , 6.8LT/MIN MAX 100 PSI, MALE PORTS, SHURFLO	1
13	GA5012667	SWITCH, TOGGLE, ON / OFF, SINGLE POLE SINGLE THROW	1
14	GA5004437	WASHER 6mm FLAT SS	4
GA6500026		TANK ASSEMBLY, 100L SPOTMATE, MY24	REV 00
 <b>GOLDACRES</b>			

# Pump, Shurflo, 12v, 6.8L, 8000 Series

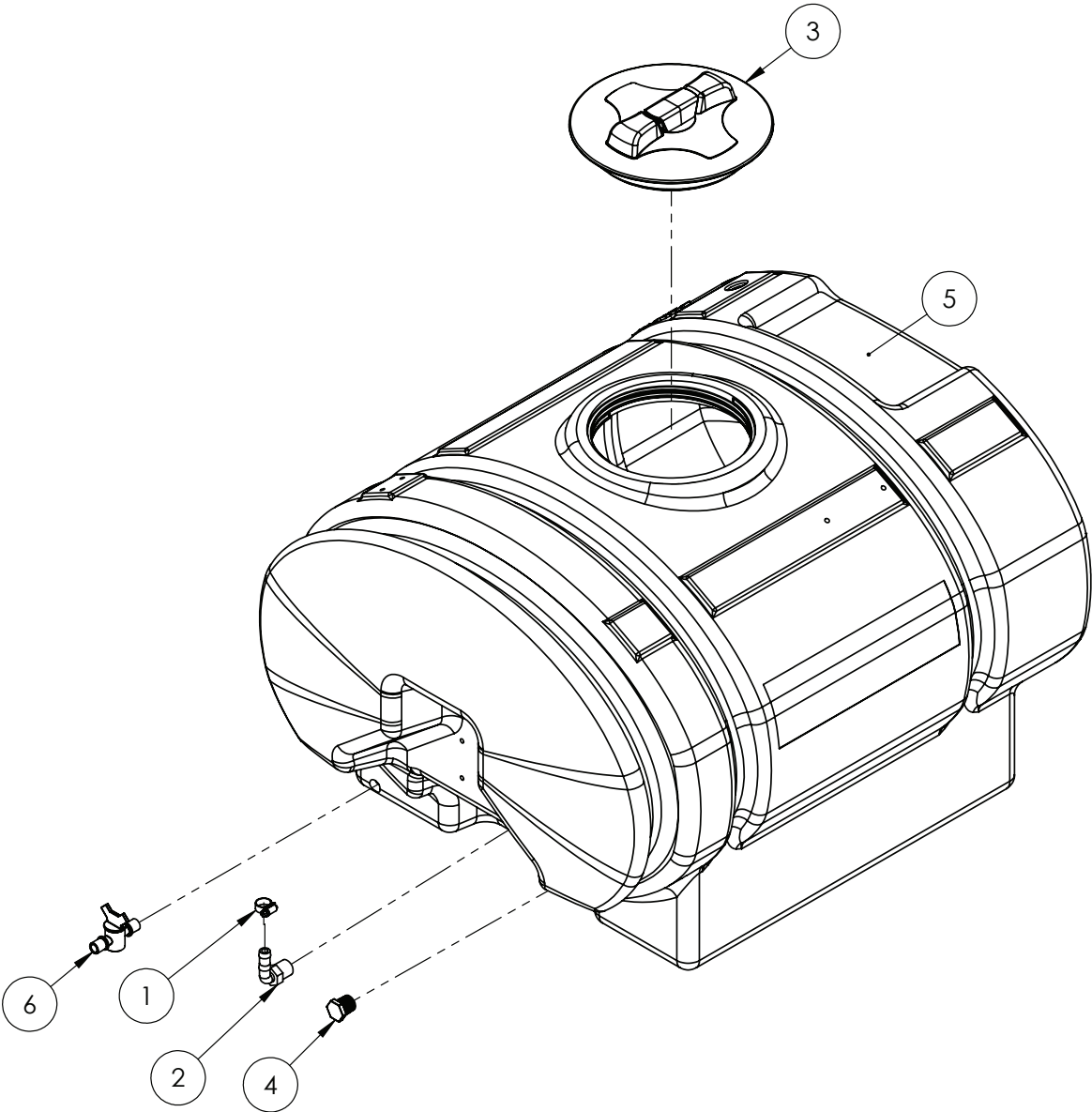



REPLACEMENT PARTS			
ITEM	PART NUMBER	DESCRIPTION	QTY
-	GA5013419	PRESSURE SWITCH, 60PSI, VITON SEALS, SUIT SHURFLOW 8000 SERIES PUMP	-
-	GA5071560	CHECK VALVE KIT, SUIT 8000 SERIES SHURFLO 6.8LT PUMP	-
-	GA5017263	HEAD, SHURFLO 8000 SERIES PUMP, MALE THREADS 1/2"	-
-	GA5071550	VALVE ASS KIT, VITON, SUIT 8000 SERIES SHURFLO 6.8LT PUMP	-
-	GA5071555	DIAPHRAGM ASS KIT, SANTOPRENE, SUIT 8000 SERIES SHURFLO 6.8LT PUMP	-

IF DESCRIPTION PREFIX IS ASSEMBLY DRAWING ONLY OR PRODUCTION DRAWING ONLY THE ITEM IS NOT FOR SALE			
ITEM	PART NUMBER	DESCRIPTION	QTY
1	GA5023400	PUMP, 12 VOLT , 6.8LT/MIN MAX 100 PSI, MALE PORTS, SHURFLO	1
GA5023400		PUMP, 12 VOLT , 6.8LT/MIN MAX 100 PSI, SHURFLO	REV
			

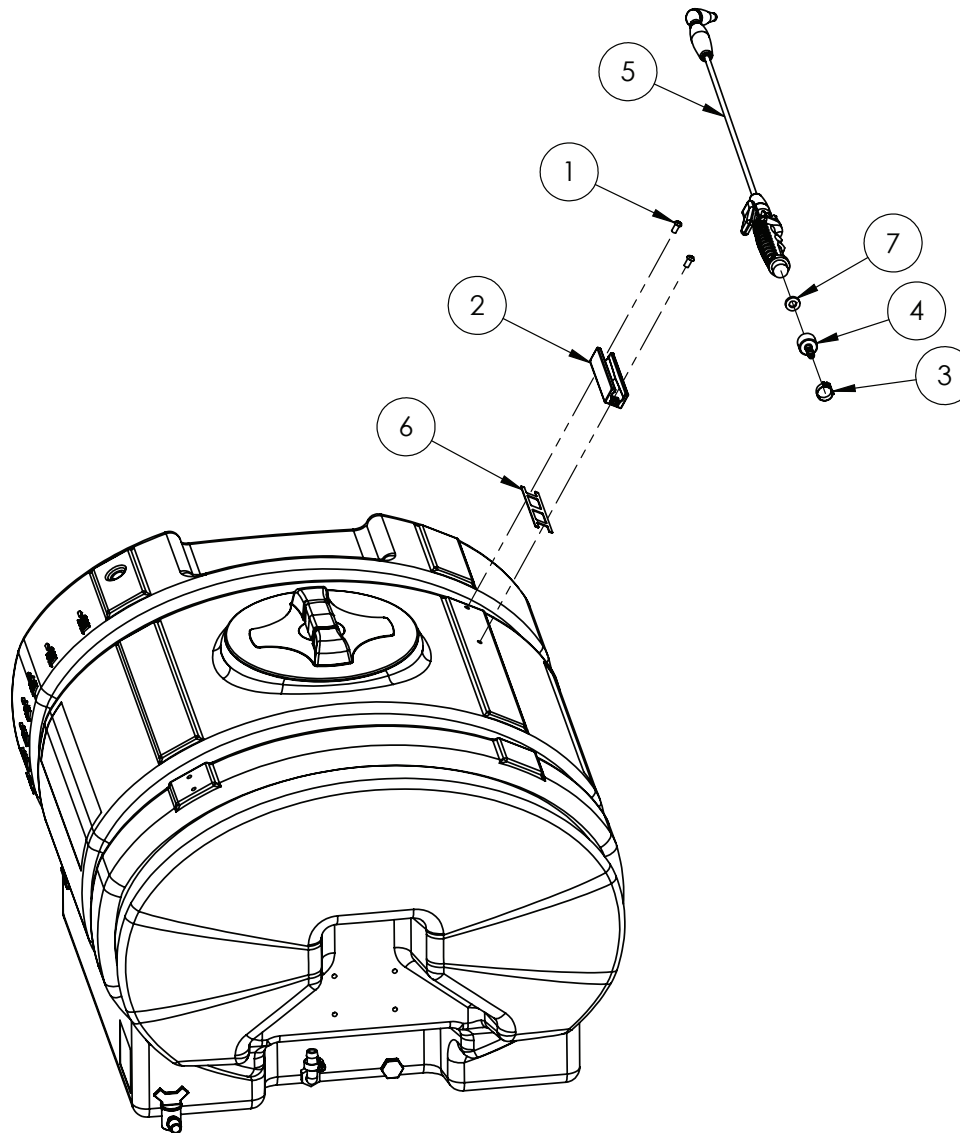


# Spotmate, 200L, Tank and Lid



IF DESCRIPTION PREFIX IS ASSEMBLY DRAWING ONLY OR PRODUCTION DRAWING ONLY THE ITEM IS NOT FOR SALE			
ITEM	PART NUMBER	DESCRIPTION	QTY
1	GA5000469	HOSE CLAMP, 1/2" SS 12-20/9W3	1
2	GA5077708	HOSE BARB, ELBOW, 90 DEGREE, 1/2 MALE THREAD X 1/2 HOSE, BANJO, HB050-90	1
3	GA5076882	LID, TANK, 255 DIAMETER, WITH BREATHER, 3522221	1
4	GA5077943	PLUG, 1/2 MALE THREAD, BANJO	1
5	GA8500034	TANK, 200L, SPOTMATE TRAYMATE, MY21	1
6	GA5024265	TAP, PLASTIC, 1/2" MALE X 1/2" MALE BSP THREAD	1
GA6500029		TANK ASSEMBLY, 200L SPOTMATE, MY21	REV 00
			

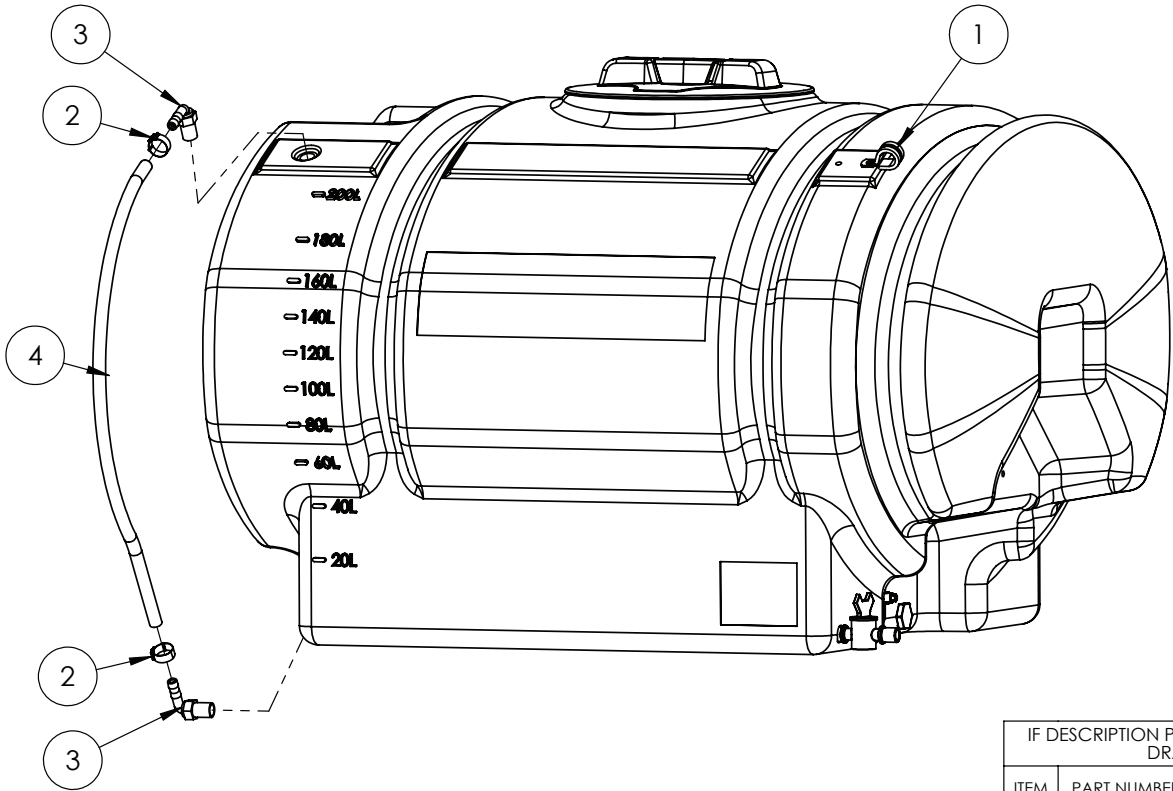
# Spotmate, 200L Lance and Lance Holder




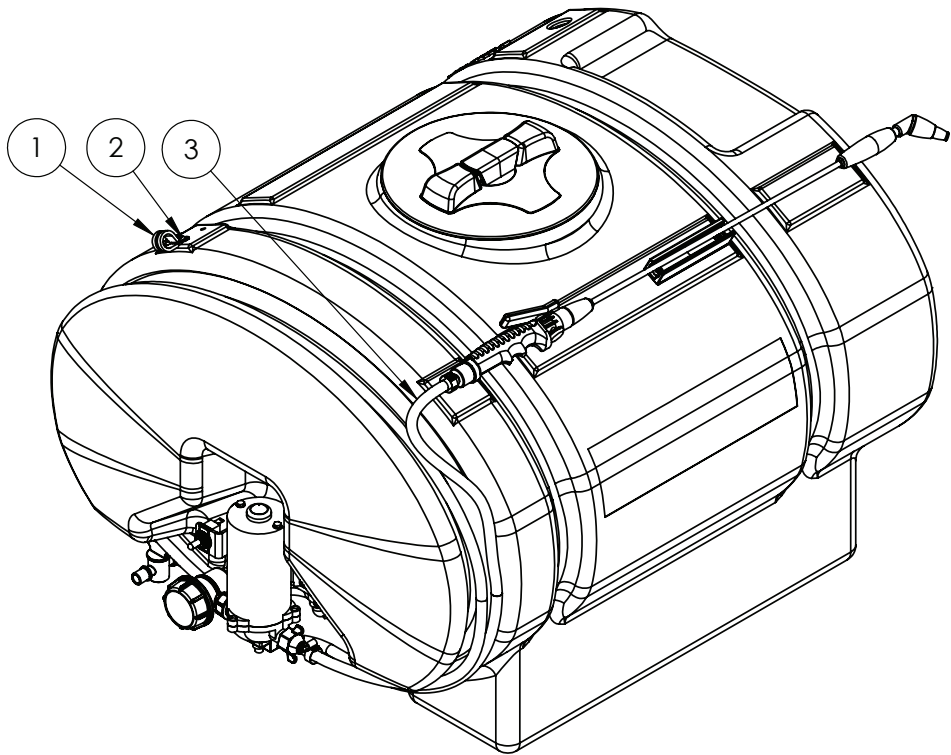
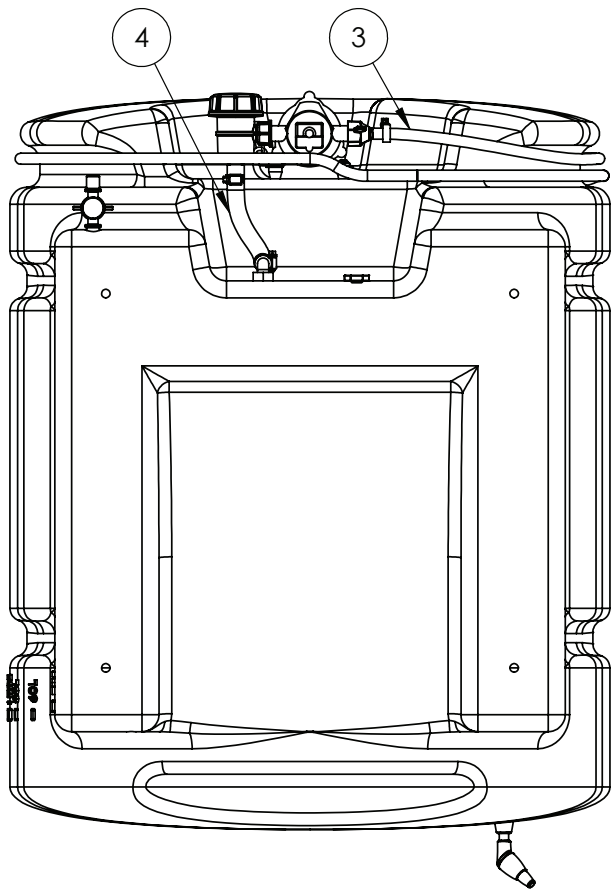
IF DESCRIPTION PREFIX IS ASSEMBLY DRAWING ONLY OR PRODUCTION DRAWING ONLY THE ITEM IS NOT FOR SALE			
ITEM	PART NUMBER	DESCRIPTION	QTY
1	GA5004033	BHCS M6 X 12 SS A2-70	2
2	GA5025505	CLIP, MAROLEX LANCE HOLDER, MY21	1
3	GA5007231	COBRA CLAMP 1 5/8 W4 VPE, 108 7006 015	1
4	GA5077551	HOSE BARB, FEMALE THREAD SUIT 50800 LANCE INLET X 3/8 HOSE, TEEJET, CP50786-PP-406	1
5	GA5060955	LANCE, TELESCOPIC, 135cm, ALUMINIUM, WITH HANDLE, MAROLEX	1
6	GA4414675	PLATE, SHIM, LANCE HOLDER	1
7	GA5055245	WASHER, NOZZLE CAP SEAL, RUBBER, 19 OD X 9 ID, SUIT TEE JET NOZZLE, REPLACES CP19438-EPR	1
GA6500029		TANK ASSEMBLY, 200L SPOTMATE, MY21	REV 00




# Spotmate, 200L, Sight Tube



IF DESCRIPTION PREFIX IS ASSEMBLY DRAWING ONLY OR PRODUCTION DRAWING ONLY THE ITEM IS NOT FOR SALE			
ITEM	PART NUMBER	DESCRIPTION	QTY
1	GA5049825	19mm RUBBER LINED HOSE CLAMP	1
2	GA5007231	COBRA CLAMP 15/8 W4 VPE, 108 7006 015	2
3	GA5077701	HOSE BARB, ELBOW, 90 DEGREE, 3/8 MALE THREAD NPT X 3/8 HOSE, BANJO	2
4	GA2000207	SIGHT TUBE, 10mm CLEAR TUBE, 580mm CUT	1
GA6500029  GOLDACRES			REV 00
TANK ASSEMBLY, 200L SPOTMATE, MY21			

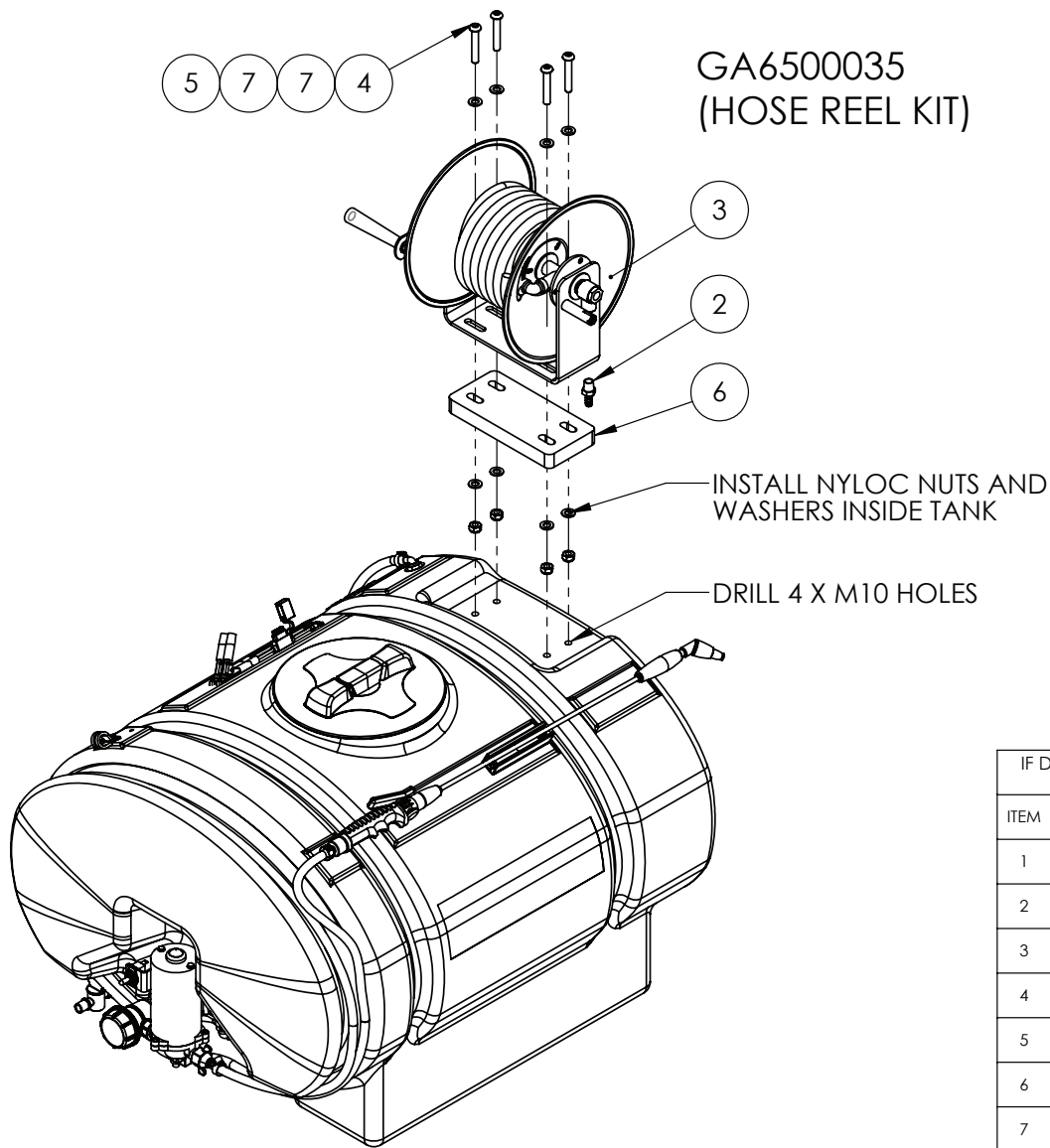



IF DESCRIPTION PREFIX IS ASSEMBLY DRAWING ONLY OR PRODUCTION DRAWING ONLY THE ITEM IS NOT FOR SALE			
ITEM	PART NUMBER	DESCRIPTION	QTY
1	GA5049825	19mm RUBBER LINED HOSE CLAMP	1
2	GA5004031	BHCS M6 X 12 GR12.9 ZP	1
3	GA2000204	HOSE, PRESSURE, 10mm, BLACK, HOS10P, CUT TO 5000mm	1
4	GA2000211	HOSE, PRESSURE, 12mm, BLACK, 250PSI, HOS13P, CUT TO 180mm	1
GA6500029		TANK ASSEMBLY, 200L SPOTMATE, MY21	REV
 GOLDACRES			00



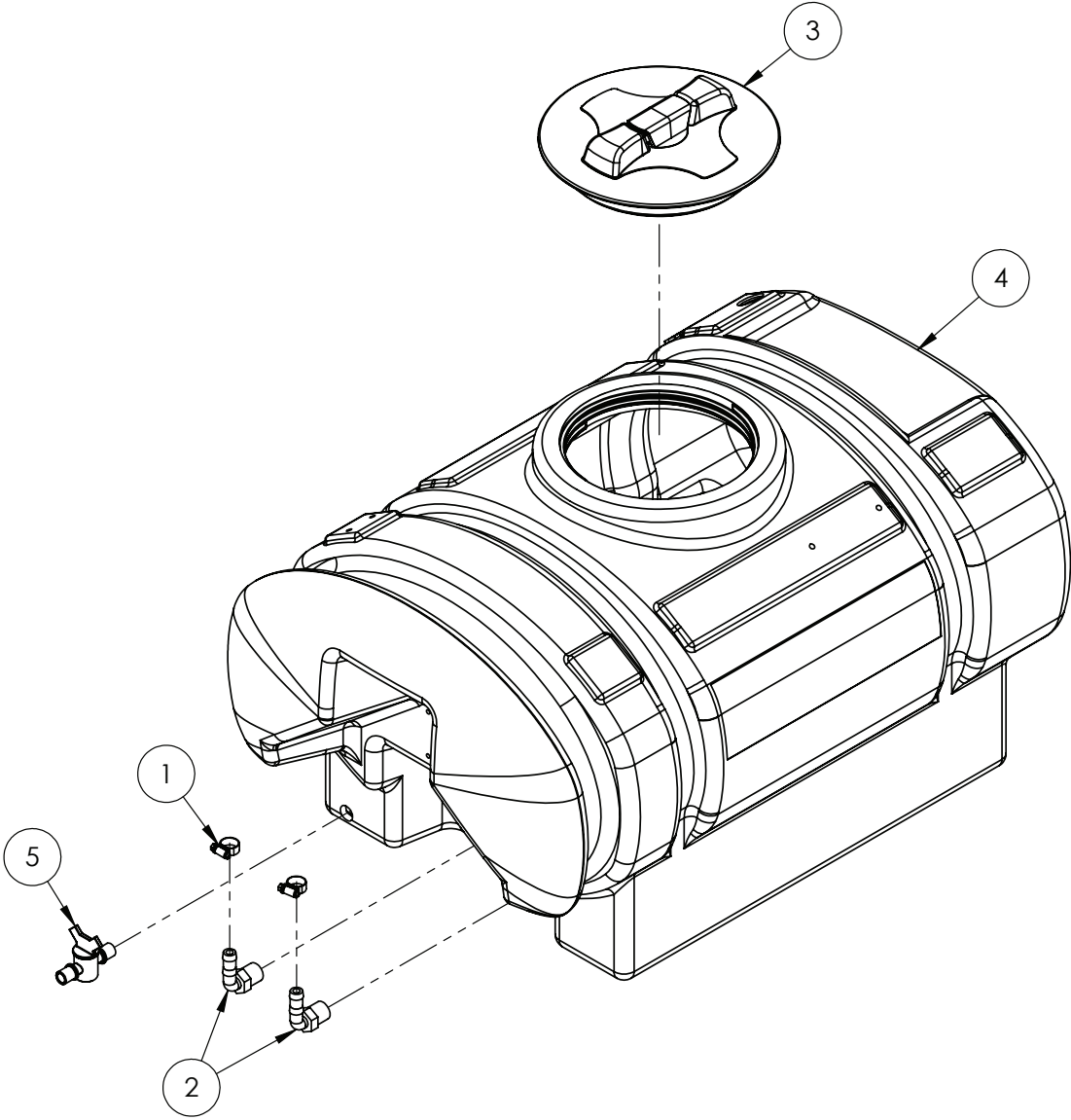



# Spotmate, 200L with Optional 15mt Hose Reel



IF DESCRIPTION PREFIX IS ASSEMBLY DRAWING ONLY OR PRODUCTION DRAWING ONLY THE ITEM IS NOT FOR SALE			
ITEM	PART NUMBER	DESCRIPTION	QTY
1	GA5004031	BHCS M6 X 12 GR12.9 ZP	1
2	GA2000567	HOSE BARB, STRAIGHT, 3/8 BSPT MALE X 3/8 HOSE, BRASS, BFP3-0606	1
3	GA5066085	HOSE REEL, MANUAL, 3/8" 15m HOSE, CHEMICAL & WATER	1
4	GA5072300	M10X60MM BHCSS	4
5	GA5051445	NUT M10 NYLOC SS	4
6	GA5074575	SPACER BLOCK, SUIT HOSE REEL, MANUAL, 3/8" 15m HOSE, GA5066085	1
7	GA5000117	WASHER 10mm FLAT SS HD	8
GA6500029		TANK ASSEMBLY, 200L SPOTMATE, MY21	REV 00
 GOLDACRES			

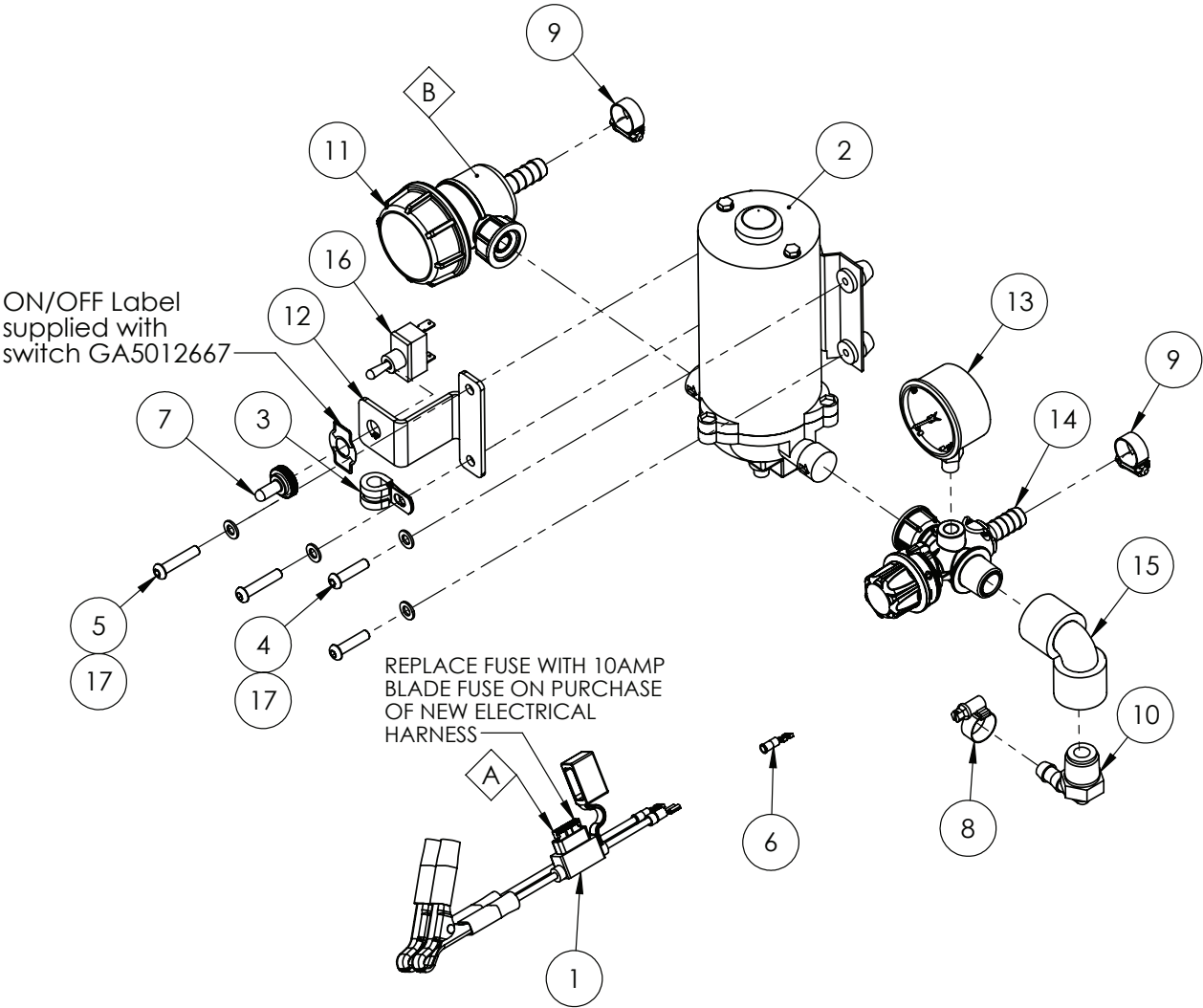
Traymate, 100L, Tank and Lid



IF DESCRIPTION PREFIX IS ASSEMBLY DRAWING ONLY OR PRODUCTION DRAWING ONLY THE ITEM IS NOT FOR SALE			
ITEM	PART NUMBER	DESCRIPTION	QTY
1	GA5000469	HOSE CLAMP, 1/2" SS 12-20/9W3	2
2	GA5077708	HOSE BARB, ELBOW, 90 DEGREE, 1/2 MALE THREAD X 1/2 HOSE, BANJO, HB050-90	2
3	GA5076882	LID, TANK, 255 DIAMETER, WITH BREATHER, 3522221	1
4	GA8500033	TANK, 100L, SPOTMATE TRAYMATE, MY21	1
5	GA5024265	TAP, PLASTIC, 1/2" MALE X 1/2" MALE BSP THREAD	1
GA6500028  GOLDACRES			REV 00
TANK ASSEMBLY, 100L TRAYMATE, MY21			




# Traymate, 100L, Pump Assembly

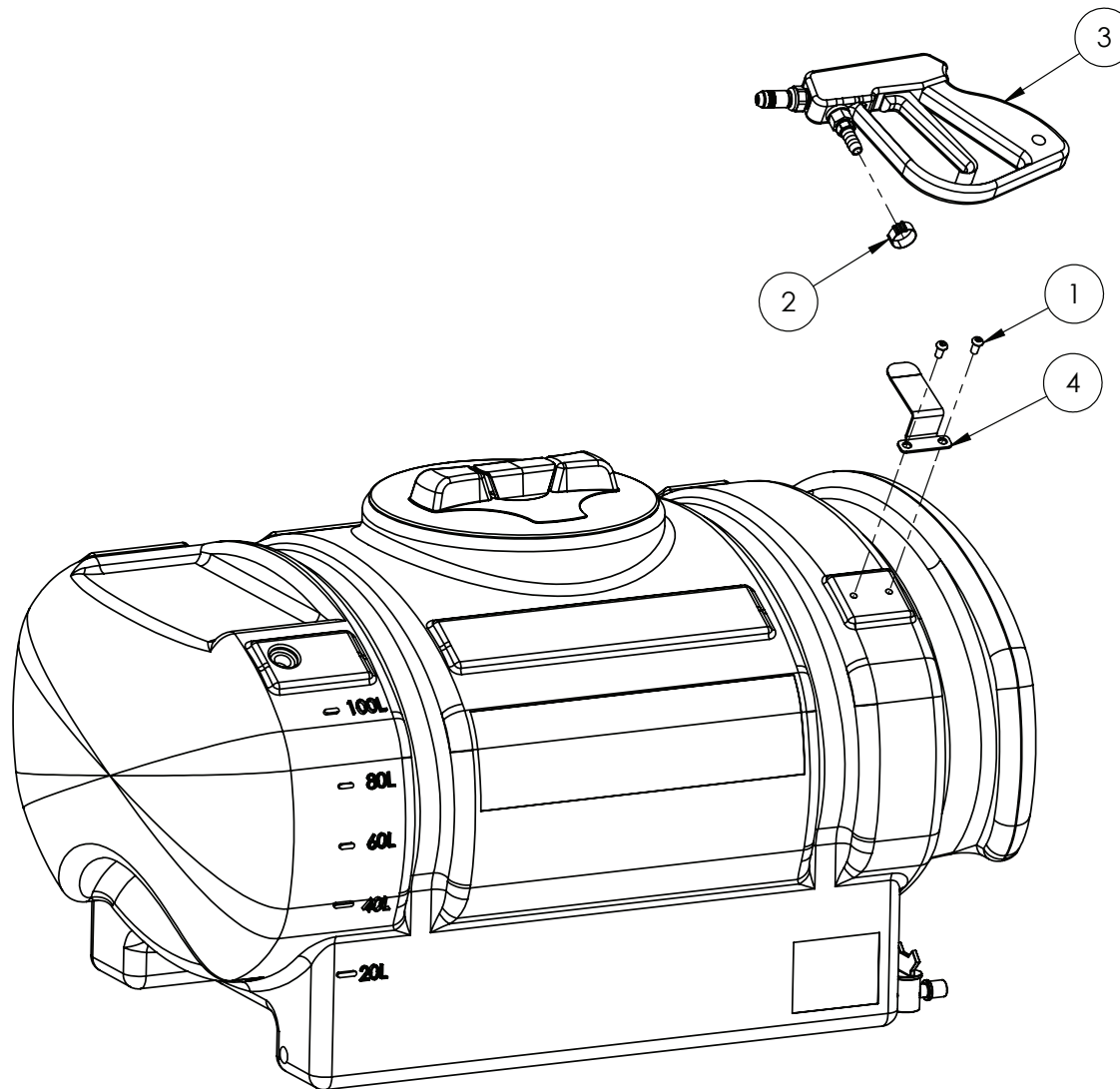


REPLACEMENT PARTS			
ITEM	PART NUMBER	DESCRIPTION	QTY
A	GA5011981	FUSE, BLADE, 10 AMP (52810)	-
B	GA5078921	FILTER ELEMENT, 50 MESH, SUIT, ARAG, MINI SUCTION FILTER, 3242003.030	-

## NOTE: DRILL 6.5MM HOLE IN REGULATOR FOR PRESSURE GAUGE

IF DESCRIPTION PREFIX IS ASSEMBLY DRAWING ONLY OR PRODUCTION DRAWING ONLY THE ITEM IS NOT FOR SALE			
ITEM	PART NUMBER	DESCRIPTION	QTY
1	GA5022255	ELECTRICAL HARNESS, IN LINE FUSE & ALLIGATOR CLIPS, 5m, SUIT 12 VOLT SPRAYERS	1
2	GA5023400	PUMP, 12 VOLT , 6.8LT/MIN MAX 100 PSI, MALE PORTS, SHURFLO	1
3	GA5050120	10mm RUBBER LINED HOSE CLAMP	1
4	GA5004067	BHCS M6 X 25 SS A2-70	2
5	GA5004075	BHCS M6 X 30 SS A2-70	2
6	GA5013621	CONNECTOR FEMALE BLADE NARVA (6.3mm BLUE)	1
7	GA5012175	COVER, TOGGLE SWITCH, WATERPROOF, NARVA	1
8	GA5004865	HOSE CLAMP 8-16mm	1
9	GA5000469	HOSE CLAMP, 1/2" SS 12-20/9W3	2
10	GA5077703	HOSE BARB, ELBOW, 90 DEGREE, 1/2" MALE THREAD X 3/8" HOSE, BANJO	1
11	GA5025510	MINI SUCTION FILTER, 1/2" NPT TO 1/2" HOSE BARB, ARAG (309TB53)	1
12	GA4508135	PLATE, SWITCH MOUNT FOR 12V SPRAYERS, 2mm S/S	1
13	GA5078876	PRESSURE GAUGE, REAR MOUNT, 150PSI, 50mm FACE, 1/8" MALE THREAD, GTS50-BE-75	1
14	GA5025515	PRESSURE REGULATING VALVE, 1/2" NPT M TO 1/2" NPT F, ARAG	1
15	GA5077652	STREET ELBOW, 90 DEGREE, 1/2" FEMALE THREAD, BANJO	1
16	GA5012667	SWITCH, TOGGLE, ON / OFF, SINGLE POLE SINGLE THROW	1
17	GA5004437	WASHER 6mm FLAT SS	4
GA6500028		TANK ASSEMBLY, 100L TRAYMATE, MY21	REV 00
 GOLDACRES			

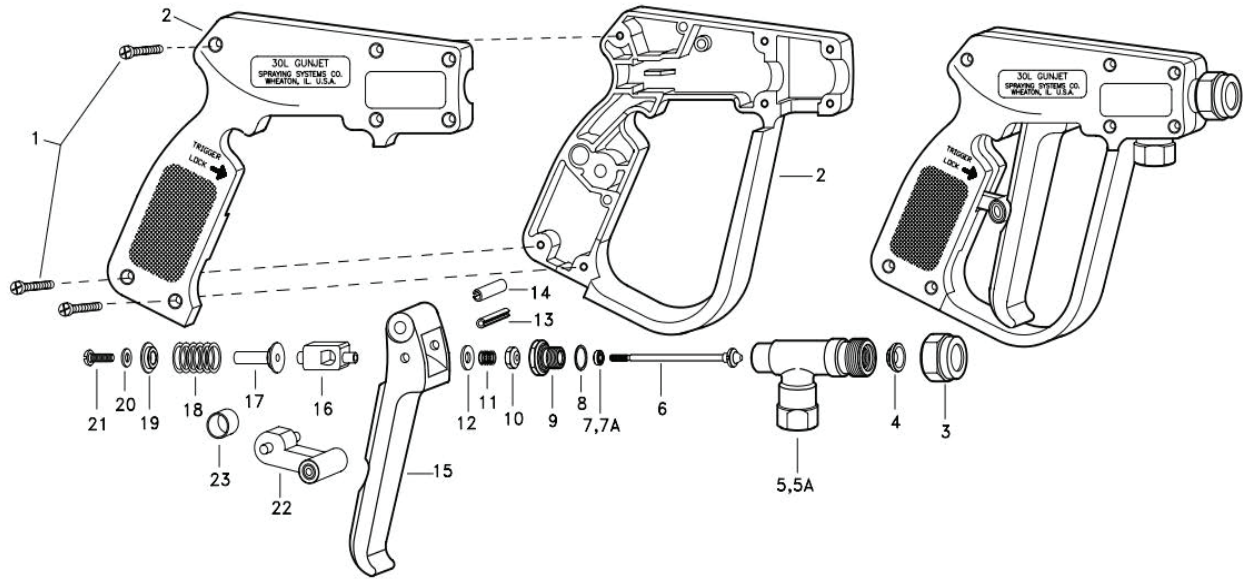
# Traymate, 100L, Spray Gun and Bracket



IF DESCRIPTION PREFIX IS ASSEMBLY DRAWING ONLY OR PRODUCTION DRAWING ONLY THE ITEM IS NOT FOR SALE			
ITEM	PART NUMBER	DESCRIPTION	QTY
1	GA5004033	BHCS M6 X 12 SS A2-70	2
2	GA5078878	COBRA CLAMP 18/8 W4, 01087006018	1
3	GA4900547	GUNJET, AA30, 5500-X26 ADJUSTABLE NOZZLE, 1/2 HOSE BARB, TEEJET	1
4	GA4410780	PLATE, GUNJET AA30 HOLDER, 2mm, TRAYMATE RANGE, MY21	1
GA6500028 GOLDACRES			REV 00
TANK ASSEMBLY, 100L TRAYMATE, MY21			



# Spray Gun - GunJet AA30L



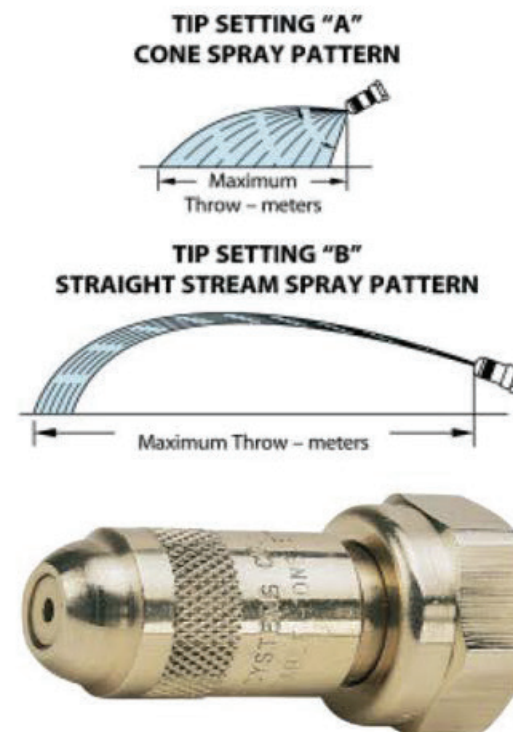
ITEM	PART NUMBER	DESCRIPTION	QTY
1	CP17103-11/16-302SS	SCREW, TYPE 302 STAINLESS STEEL	7
2	GA5077414	HOUSING SET NYLON SUITS, GA4900546	-
3	GA5077610	CAP, STL, PLTD, 80 GUN, CP7890-INP, SUITS GA4900546	-
4	GA5077590	VALVE SEAT, BRASS AND TEFLON, CP7490-BRTF, SUITS AA30 GUN, SUITS GA4900546	-
5	GA5077441	BODY BRASS 30L, SUITS GA4900546	-
6	GA5077442	STEM SUB-ASB, 30L, SUITS GA4900546	-
7	GA5077376	CUP PACKING BUNA	-
7A	GA5077377	PACKING CUP, VITON, TEEJET	-
8	GA5077421	GASKET BRASS 30 GUN	-
9	GA5077420	PACKING SCREW, 30 GUN, SUITS GA4900546	-
10	GA5077588	STEM NUT, CP7484-SS	-
11	GA5077588	STEM NUT, CP7484-SS	-
12	CP7622-302SS	#6 BURR, TYPE 302 SS	-
13	GA5077407	ROLL PIN 60 GUNJETS, SUITS GA4900546	-
14	GA5077427	ROLL PIN, 420SS, 30 GUN, SUITS GA4900546	-
15	CP17703-NY	TRIGGER, NYLON (YELLOW)	-
16	GA5077419	TRIGGER GUIDE, 30 GUN, SUITS GA4900546	-
17	GA5077423	SPRING GUIDE, 30 GUN, SUITS GA4900546	-
18	GA5077443	SPRING, 302SS, 30L	-
19	GA5077426	WASHER, ST, STL, 30 GUN, SUITS GA4900546	-
20	GA5077426	WASHER, ST, STL, 30 GUN, SUITS GA4900546	-
21	GA5077425	SCREW SS, 30 GUN	-
22	GA5077417	TRIGGER LOCK, NYLON	-
23	GA5077416	LOCK SPR. RING, CELCON, SUITS GA4900546	-
GA4900545		GUNJET AA30	REV



## Spray Gun - Nozzle

The adjustable brass ConeJet nozzle rotates through a half turn to provide spray selection from wide angle, finely atomized cone spray to a straight stream spray.

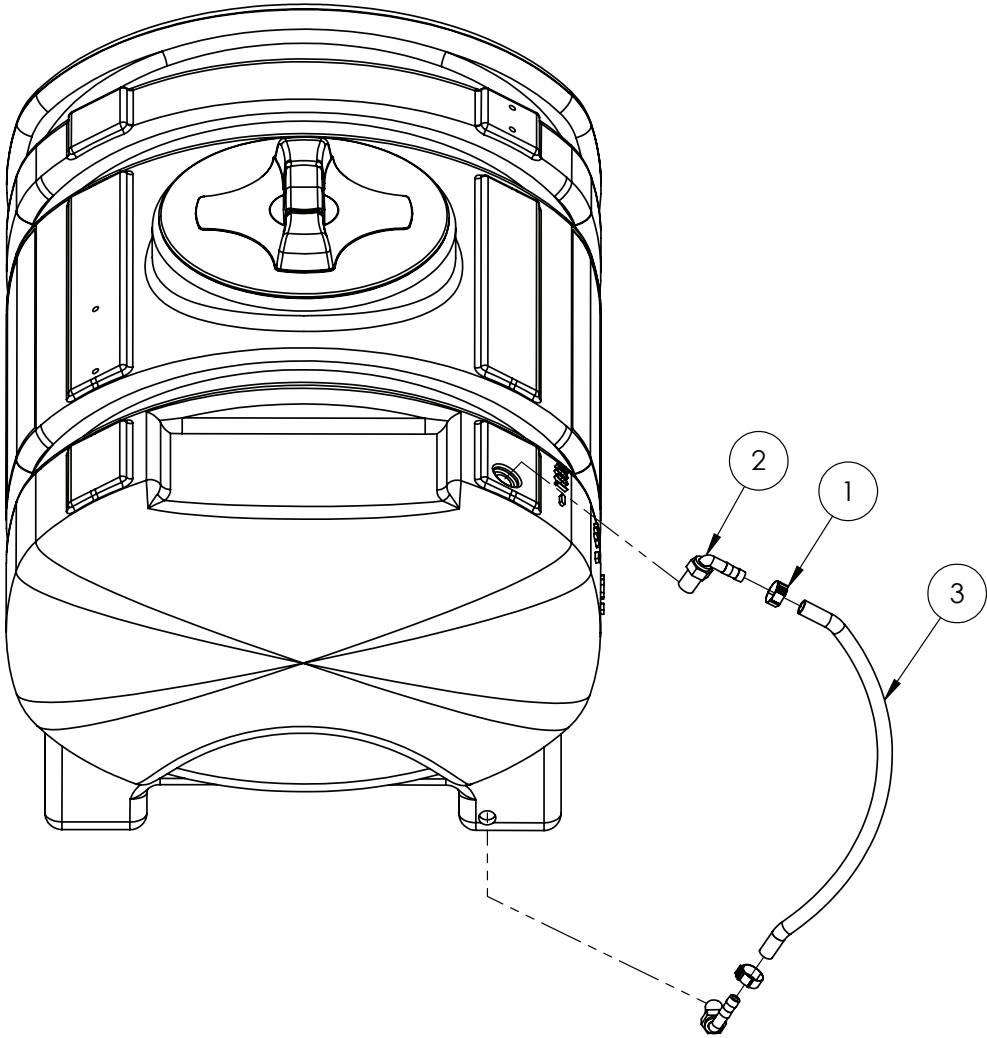
**NOTE:** Tip settings "A" and "B" represent two extreme points of rotation in tip adjustment.



Adjustable ConeJet Tip No.	Performance	Liquid Pressure (bar)							
		1.5		2		3		4	
		A	B	A	B	A	B	A	B
GA8100370 Standard	Capacity—l/min	0.79	2.61	0.98	3.18	1.14	3.67	1.40	4.54
	Spray angle °	71	-	75	-	77	-	78	-
	Max throw m	1.2	11.6	1.2	12.8	1.2	13.3	1.2	13.0
GA8100377	Capacity—l/min	0.98	3.14	1.21	3.79	1.40	4.54	1.70	5.30
	Spray angle °	71	-	75	-	78	-	79	-
	Max throw m	1.2	11.7	1.40	13.0	1.5	13.6	1.5	13.2
GA8100371	Capacity—l/min	1.17	3.71	1.40	4.54	1.63	5.30	2.01	6.43
	Spray angle °	72	-	76	-	78	-	79	-
	Max throw m	1.4	11.6	1.5	13.1	1.5	13.7	1.7	13.3

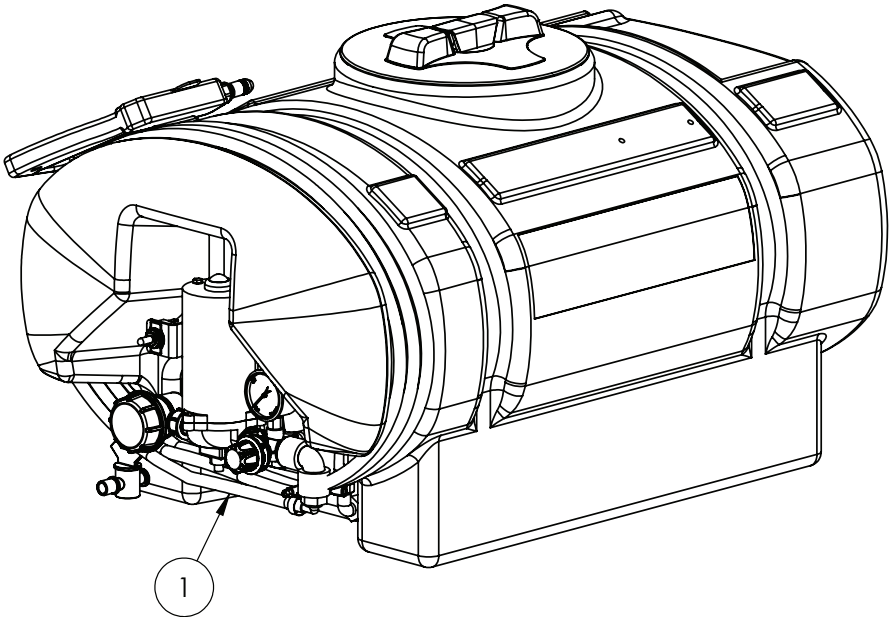
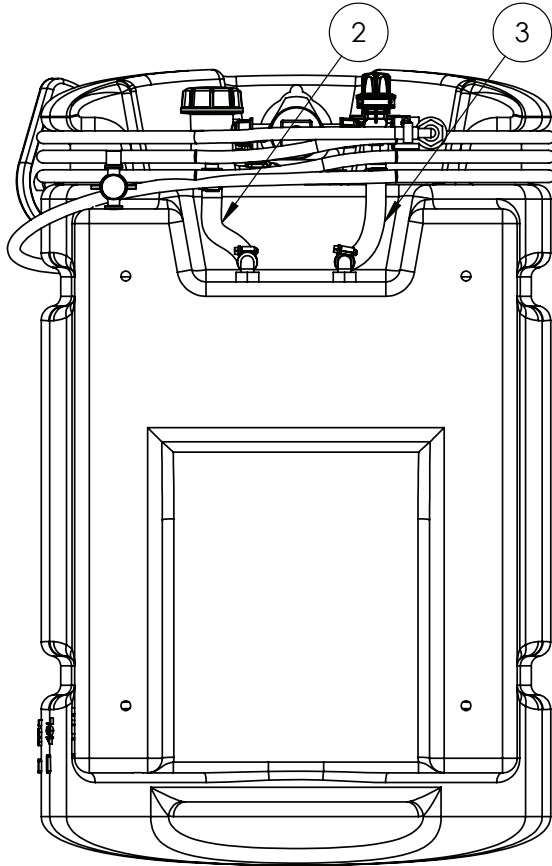



# Traymate, 100L, Sight Tube



IF DESCRIPTION PREFIX IS ASSEMBLY DRAWING ONLY OR PRODUCTION DRAWING ONLY THE ITEM IS NOT FOR SALE			
ITEM	PART NUMBER	DESCRIPTION	QTY
1	GA5007231	COBRA CLAMP 15/8 W4 VPE, 108 7006 015	2
2	GA5077701	HOSE BARB, ELBOW, 90 DEGREE, 3/8 MALE THREAD NPT X 3/8 HOSE, BANJO	2
3	GA2000207	SIGHT TUBE, 10mm CLEAR TUBE, 435mm CUT	1
GA6500028		TANK ASSEMBLY, 100L TRAYMATE, MY21	REV 00

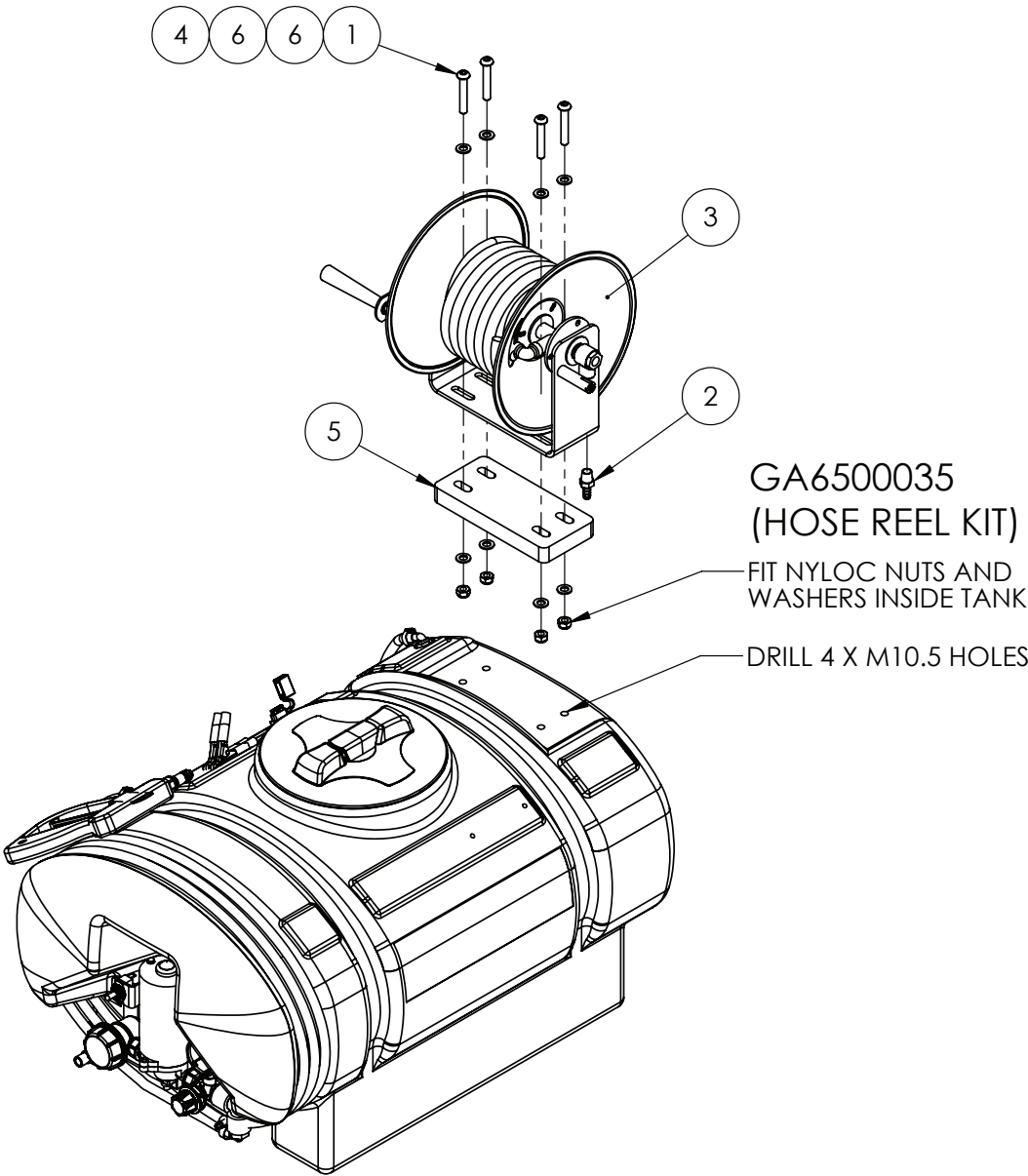





IF DESCRIPTION PREFIX IS ASSEMBLY DRAWING ONLY OR PRODUCTION DRAWING ONLY THE ITEM IS NOT FOR SALE			
ITEM	PART NUMBER	DESCRIPTION	QTY
1	GA2000204	HOSE, PRESSURE, 10mm, BLACK, HOS10P, CUT TO 5000mm	1
2	GA2000211	HOSE, PRESSURE, 12mm, BLACK, 250PSI, HOS13P, CUT TO 180mm	1
3	GA2000211	HOSE, PRESSURE, 12mm, BLACK, 250PSI, HOS13P, CUT TO 190mm	1
GA6500028		TANK ASSEMBLY, 100L TRAYMATE, MY21	REV
			00

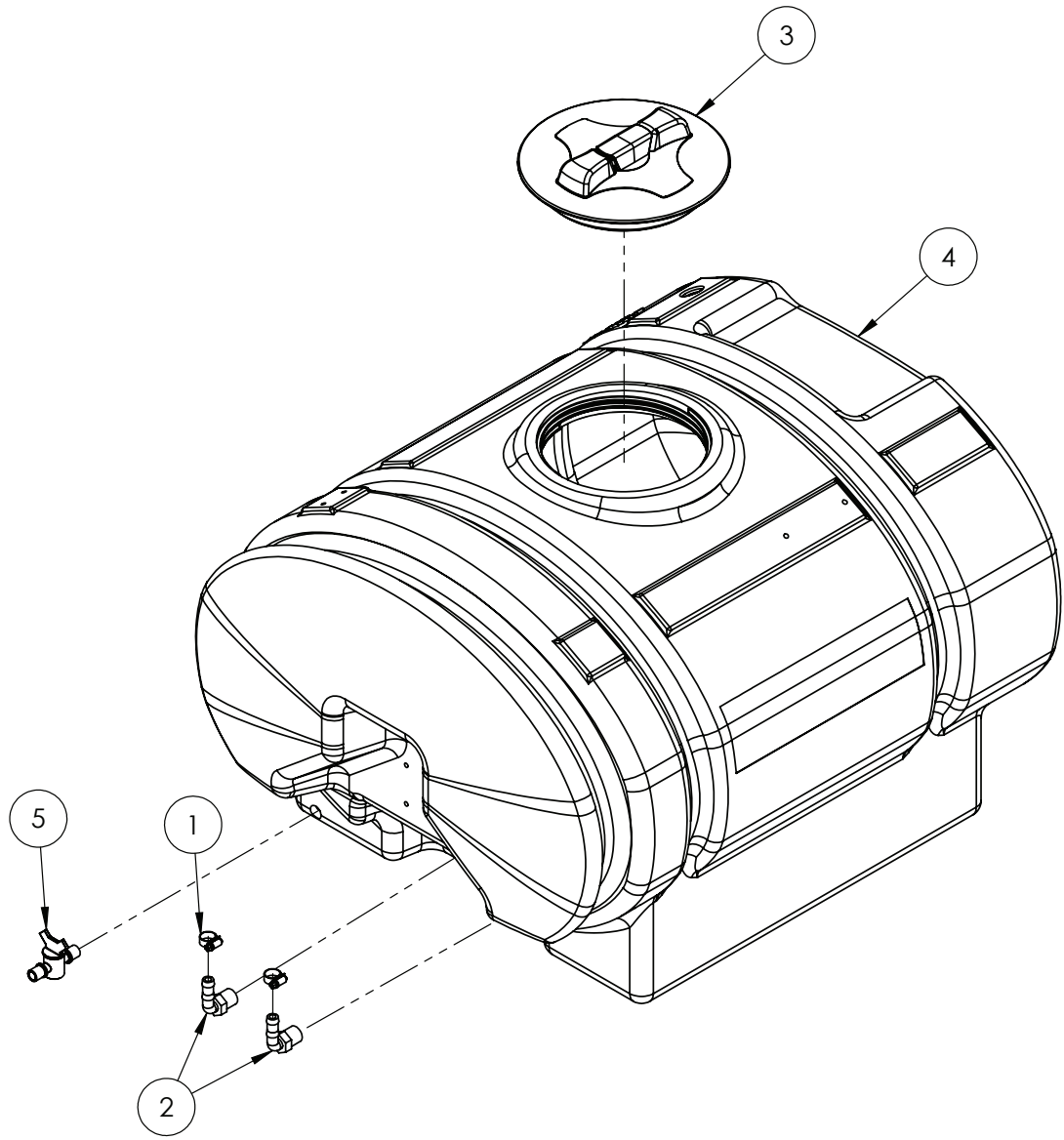



# Traymate, 100L, with Optional 15mt Hose Reel



IF DESCRIPTION PREFIX IS ASSEMBLY DRAWING ONLY OR PRODUCTION DRAWING ONLY THE ITEM IS NOT FOR SALE			
ITEM	PART NUMBER	DESCRIPTION	QTY
1	GA5072300	BHCS M10 X 60 SS A2-70	4
2	GA2000567	HOSE BARB, STRAIGHT, 3/8 BSPT MALE X 3/8 HOSE, BRASS, BFP3-0606	1
3	GA5066085	HOSE REEL, MANUAL, 3/8" 15m HOSE, CHEMICAL & WATER	1
4	GA5051445	NUT M10 NYLOC SS	4
5	GA5074575	SPACER BLOCK, SUIT HOSE REEL, MANUAL, 3/8" 15m HOSE, GA5066085	1
6	GA5000117	WASHER M10 FLAT SS HD	8
GA6500028		TANK ASSEMBLY, 100L TRAYMATE, MY21	REV 00
 GOLDACRES			

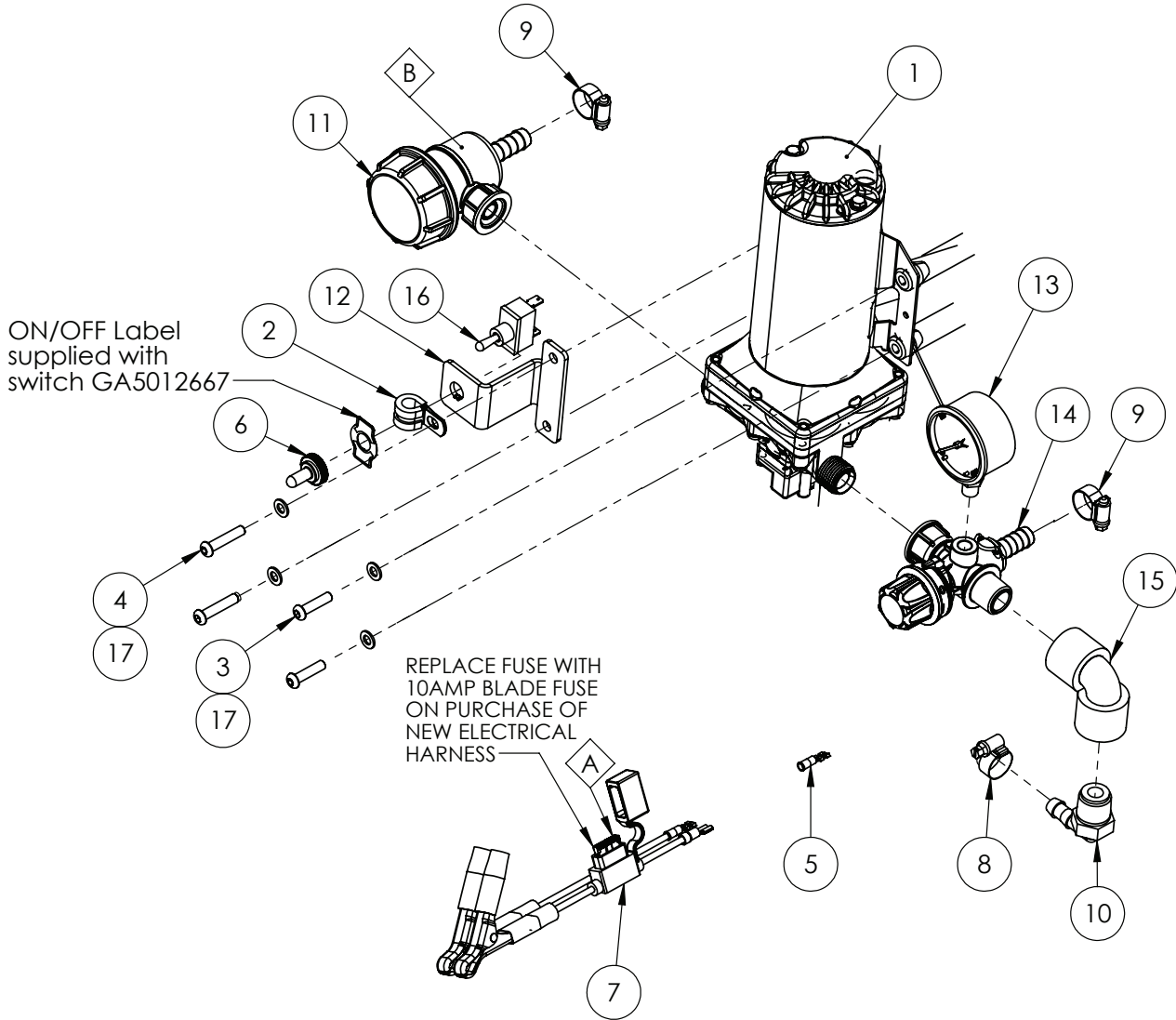
Traymate, 200L, Tank and Lid



IF DESCRIPTION PREFIX IS ASSEMBLY DRAWING ONLY OR PRODUCTION DRAWING ONLY THE ITEM IS NOT FOR SALE			
ITEM	PART NUMBER	DESCRIPTION	QTY
1	GA5000469	HOSE CLAMP, 1/2" SS 12-20/9W3	2
2	GA5077708	HOSE BARB, ELBOW, 90 DEGREE, 1/2 MALE THREAD X 1/2 HOSE, BANJO, HB050-90	2
3	GA5076882	LID, TANK, 255 DIAMETER, WITH BREATHER, 3522221	1
4	GA8500034	TANK, 200L, SPOTMATE TRAYMATE, MY21	1
5	GA5024265	TAP, PLASTIC, 1/2" MALE X 1/2" MALE BSP THREAD	1
GA6500030		TANK ASSEMBLY, 200L TRAYMATE, MY21	REV 00
 GOLDACRES			




# Pump Assembly, Traymate, 200L

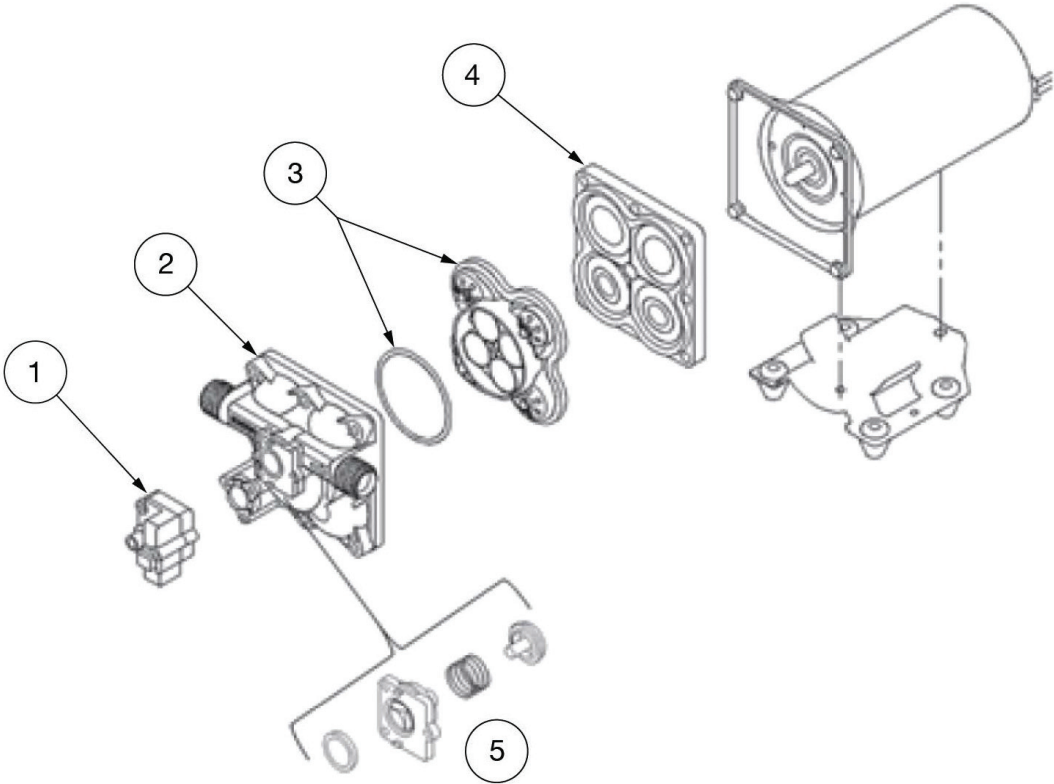



REPLACEMENT PARTS			
ITEM	PART NUMBER	DESCRIPTION	QTY
A	GA5011981	FUSE, BLADE, 10 AMP (52810)	-
B	GA5078921	FILTER ELEMENT, 50 MESH, SUIT, ARAG, MINI SUCTION FILTER, 3242003.030	-

NOTE:  
DRILL 6.5MM HOLE IN REGULATOR  
FOR PRESSURE GAUGE

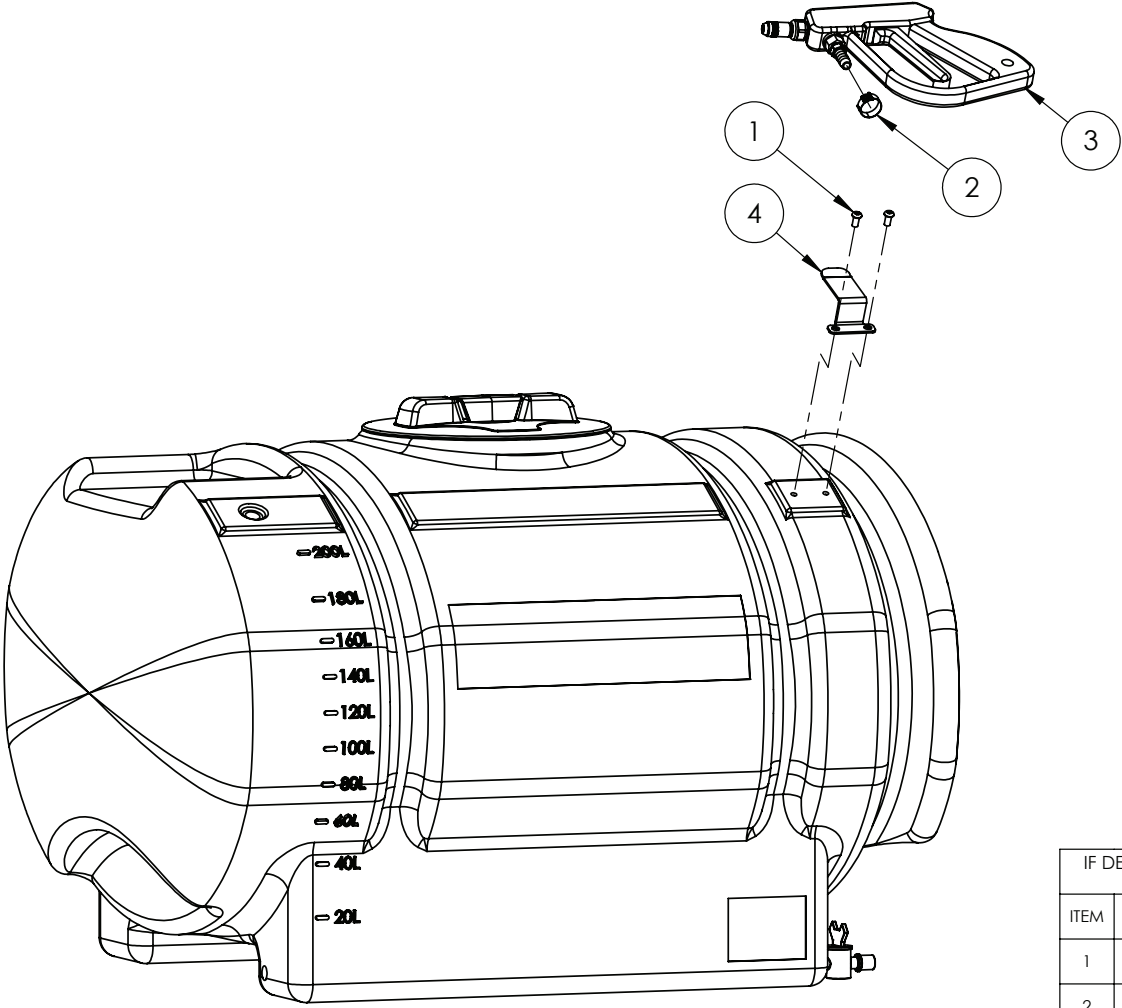
IF DESCRIPTION PREFIX IS ASSEMBLY DRAWING ONLY OR PRODUCTION DRAWING ONLY THE ITEM IS NOT FOR SALE			
ITEM	PART NUMBER	DESCRIPTION	QTY
1	GA5071525	PRESSURE SWITCH, 60 PSI SUIT 5059 SERIES SHURFLO 20LT PUMP	1
2	GA5050120	10mm RUBBER LINED HOSE CLAMP	1
3	GA5004067	BHCS M6 X 25 SS A2-70	2
4	GA5004075	BHCS M6 X 30 SS A2-70	2
5	GA5013621	CONNECTOR FEMALE BLADE NARVA (6.3mm BLUE)	1
6	GA5012175	COVER, TOGGLE SWITCH, WATERPROOF, NARVA	1
7	GA5022255	ELECTRICAL HARNESS, IN LINE FUSE & ALLIGATOR CLIPS, 5m, SUIT 12 VOLT SPRAYERS	1
8	GA5004865	HOSE CLAMP 8-16mm	1
9	GA5000469	HOSE CLAMP, 1/2" SS 12-20/9W3	2
10	GA5077703	HOSE BARB, ELBOW, 90 DEGREE, 1/2" MALE THREAD X 3/8" HOSE, BANJO	1
11	GA5025510	MINI SUCTION FILTER, 1/2" NPT TO 1/2" HOSE BARB, ARAG (309TB53)	1
12	GA4508135	PLATE, SWITCH MOUNT FOR 12V SPRAYERS, 2mm S/S	1
13	GA5078876	PRESSURE GAUGE, REAR MOUNT, 150PSI, 50mm FACE, 1/8" MALE THREAD, GTS50-BE-75	1
14	GA5025515	PRESSURE REGULATING VALVE, 1/2" NPT M TO 1/2" NPT F, ARAG	1
15	GA5077652	STREET ELBOW, 90 DEGREE, 1/2" FEMALE THREAD, BANJO	1
16	GA5012667	SWITCH, TOGGLE, ON / OFF, SINGLE POLE SINGLE THROW	1
17	GA5004437	WASHER 6mm FLAT SS	4
GA6500030		TANK ASSEMBLY, 200L TRAYMATE, MY21	REV 00
 GOLDACRES			

# Pump, Shurflo, 12v, 20L, 5059 Series



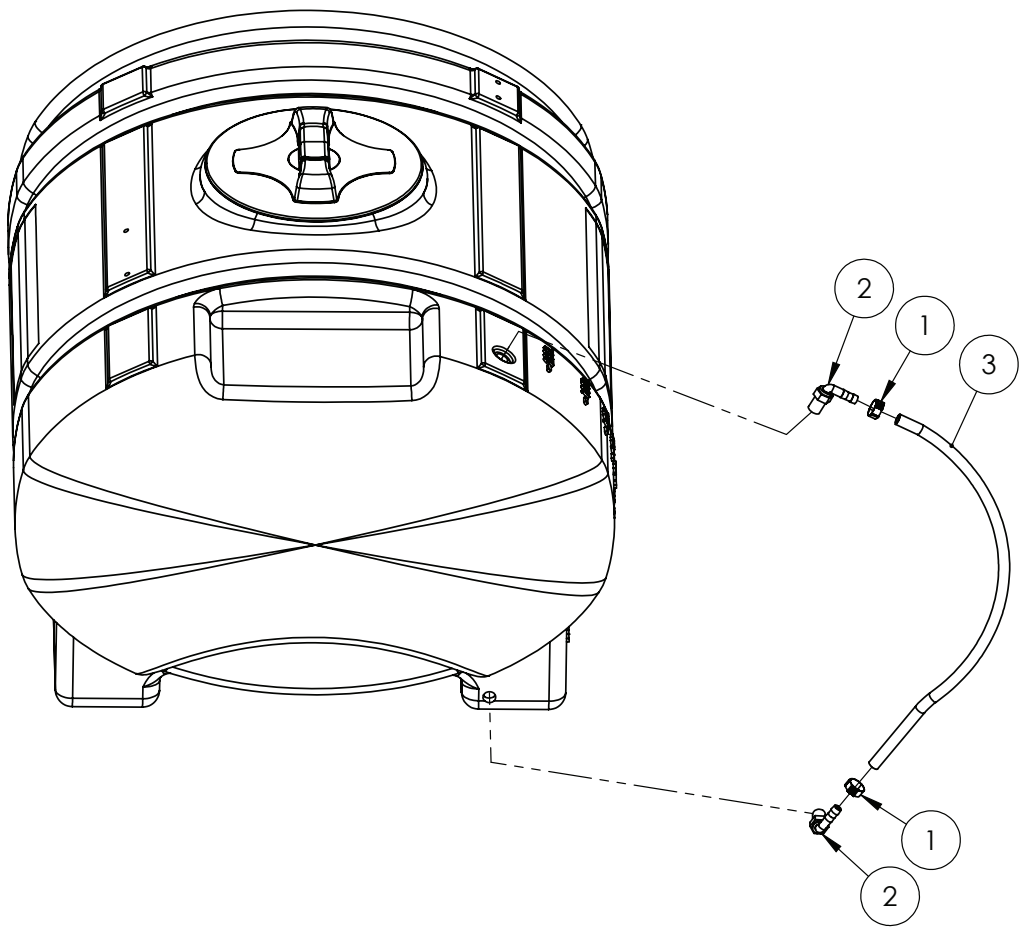
IF DESCRIPTION PREFIX IS ASSEMBLY DRAWING ONLY OR PRODUCTION DRAWING ONLY THE ITEM IS NOT FOR SALE			
ITEM	PART NUMBER	DESCRIPTION	QTY
1	GA5071525	PRESSURE SWITCH, 60 PSI SUIT 5059 SERIES SHURFLO 20LT PUMP	1
2	GA5055750	UPPER HOUSING, 1/2" MALE PORTS, 5059 SERIES SHURFLO PUMP, 94-910-01	-
3	GA5071530	VALVE ASS KIT, VITON, SUIT 5059 SERIES SHURFLO 20LT PUMP	-
4	GA5071535	DIAPHRAGM ASS KIT, SANTOPRENE SUIT 5059 SERIES SHURFLO 20LT PUMP	-
5	GA5071540	CHECK VALVE KIT, SUIT 5059 SERIES SHURFLO 20LT PUMP	-
GA5071305		PUMP, 12V, 20.1 L/MIN, SERIES 5059, SHURFLO	REV 00
			


Traymate, 200L, Spray Gun and Bracket



IF DESCRIPTION PREFIX IS ASSEMBLY DRAWING ONLY OR PRODUCTION DRAWING ONLY THE ITEM IS NOT FOR SALE			
ITEM	PART NUMBER	DESCRIPTION	QTY
1	GA5004033	BHCS M6 X 12 SS A2-70	2
2	GA5078878	COBRA CLAMP 18/8 W4, 01087006018	1
3	GA4900547	GUNJET, AA30, 5500-X26 ADJUSTABLE NOZZLE, 1/2 HOSE BARB, TEEJET	1
4	GA4410780	PLATE, GUNJET AA30 HOLDER, 2mm, TRAYMATE RANGE, MY21	1
GA6500030 GOLDACRES			REV 00
TANK ASSEMBLY, 200L TRAYMATE, MY21			

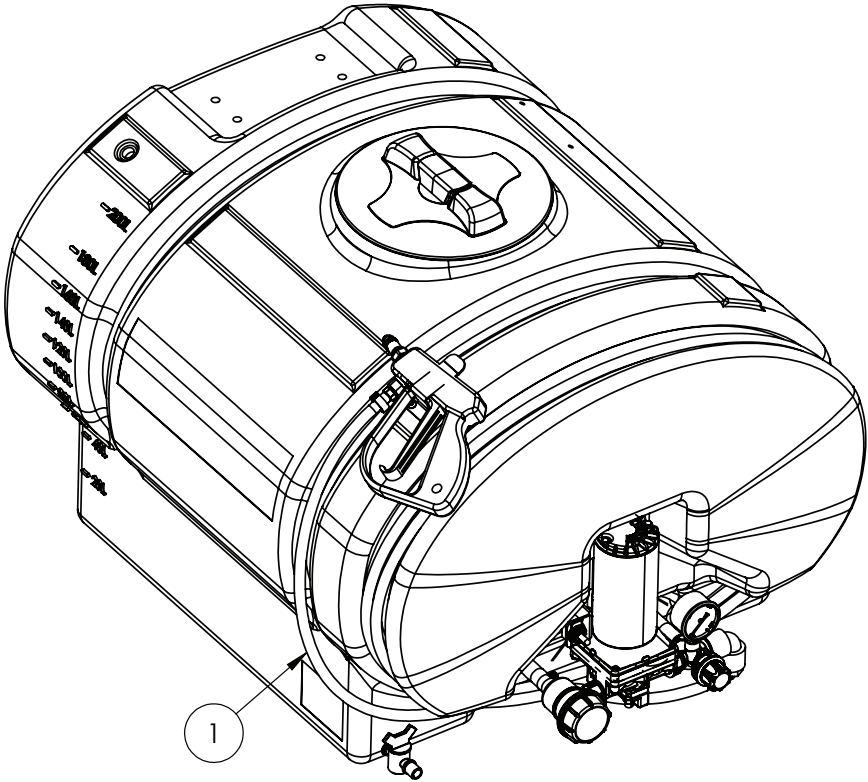
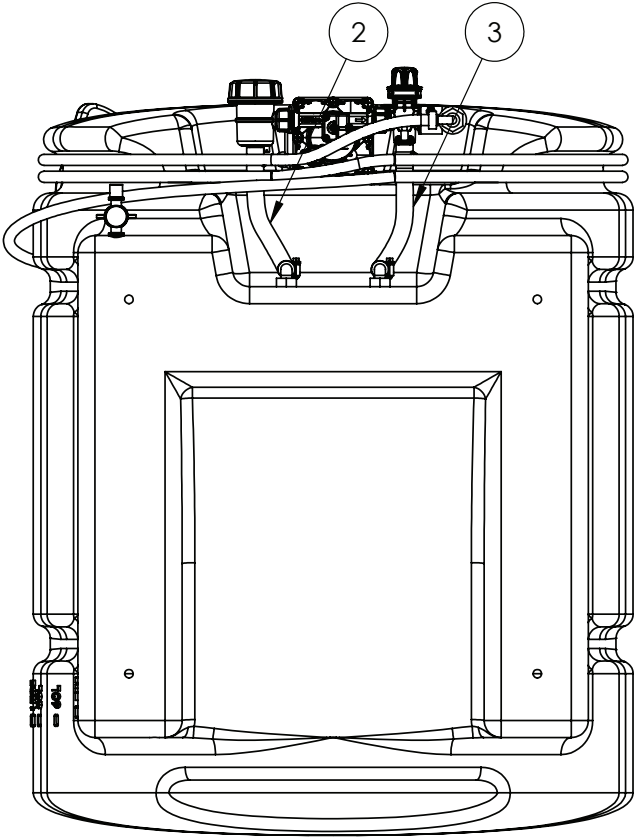
# Traymate, 200L, Sight Tube




IF DESCRIPTION PREFIX IS ASSEMBLY DRAWING ONLY OR PRODUCTION DRAWING ONLY THE ITEM IS NOT FOR SALE			
ITEM	PART NUMBER	DESCRIPTION	QTY
1	GA5007231	COBRA CLAMP 15/8 W4 VPE, 108 7006 015	2
2	GA5077701	HOSE BARB, ELBOW, 90 DEGREE, 3/8 MALE THREAD NPT X 3/8 HOSE, BANJO	2
3	GA2000207	SIGHT TUBE, 10mm CLEAR TUBE, 580mm CUT	1
GA6500030		TANK ASSEMBLY, 200L TRAYMATE, MY21	REV 00
 GOLDACRES			



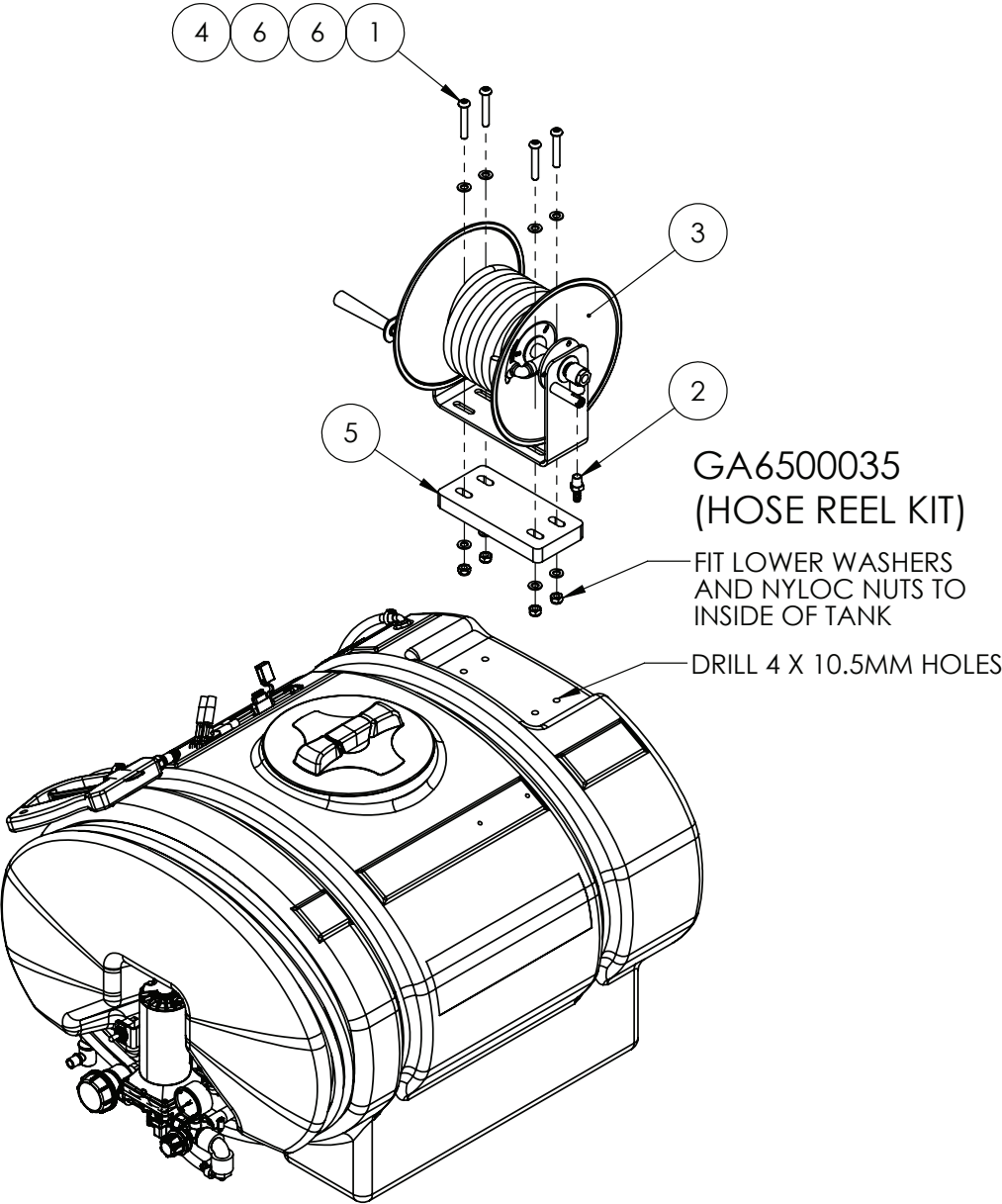
# Traymate, 200L, Hoses




IF DESCRIPTION PREFIX IS ASSEMBLY DRAWING ONLY OR PRODUCTION DRAWING ONLY THE ITEM IS NOT FOR SALE			
ITEM	PART NUMBER	DESCRIPTION	QTY
1	GA2000204	HOSE, PRESSURE, 10mm, BLACK, HOS10P, CUT TO 4700mm	1
2	GA2000211	HOSE, PRESSURE, 12mm, BLACK, 250PSI, HOS13P, CUT TO 200mm	1
3	GA2000211	HOSE, PRESSURE, 12mm, BLACK, 250PSI, HOS13P, CUT TO 210mm	1
GA6500030		TANK ASSEMBLY, 200L TRAYMATE, MY21	REV
 <b>GOLDACRES</b>			00



# Traymate, 200L with Optional 15mt Hose Reel



IF DESCRIPTION PREFIX IS ASSEMBLY DRAWING ONLY OR PRODUCTION DRAWING ONLY THE ITEM IS NOT FOR SALE			
ITEM	PART NUMBER	DESCRIPTION	QTY
1	GA5072300	BHCS M10 X 60 SS A2-70	4
2	GA2000567	HOSE BARB, STRAIGHT, 3/8 BSPT MALE X 3/8 HOSE, BRASS, BFP3-0606	1
3	GA5066085	HOSE REEL, MANUAL, 3/8" 15m HOSE, CHEMICAL & WATER	1
4	GA5051445	NUT M10 NYLOC SS	4
5	GA5074575	SPACER BLOCK, SUIT HOSE REEL, MANUAL, 3/8" 15m HOSE, GA5066085	1
6	GA5000117	WASHER M10 FLAT SS HD	8
GA6500030		TANK ASSEMBLY, 200L TRAYMATE, MY21	REV 00
 GOLDACRES			



# Miscellaneous Parts

PART NUMBER	DESCRIPTION	PART NUMBER	DESCRIPTION
SUCTION HOSE		LAY FLAT HOSE	
GA2000218	HOSE, SUCTION, WIRE REINFORCED, 20mm, BLACK, HOS20S, SOLD PER METER, 20M IN A ROLL	GA2000220	HOSE, SUCTION, PVC, 25mm, BLACK, HOS25PVC, SOLD PER METER, 30M IN A ROLL.
GA2000222	HOSE, SUCTION, 25mm, WIRE REINFORCED, HOS25S, SOLD PER METER, 20M IN A ROLL		
GA2000224	HOSE, SUCTION, 32mm, WIRE REINFORCED, HOS32S, SOLD PER METER, 20M IN A ROLL	HOSE CLAMPS	
GA2000226	HOSE, SUCTION, 38mm, WIRE REINFORCED, HOS38S, SOLD PER METER, 20M IN A ROLL	GA5004865	HOSE CLAMP, 3/8.SS (8-16/9W)
GA2000229	HOSE, SUCTION, 51mm, WIRE REINFORCED, HOS51S, SOLD PER METER, 20M IN A ROLL	GA5000469	HOSE CLAMP, 1/2" SS 12-20/9W3
GA2000230	HOSE 63mm SUCTION (WIRE REINFORCED), HOS63S, SOLD PER METER,	GA5000999	HOSE CLAMP, 3/4" SS (16-27/12W)
GA2000232	HOSE, SUCTION, 75mm, WIRE REINFORCED, HOS75S, SOLD PER METER, 20M IN A ROLL	GA5001681	HOSE CLAMP, 1" SS (20-32/12W)
NOTE: SUCTION HOSE CAN BE IDENTIFIED BY ITS EXTERNAL GREEN STRIPE AND WIRE REINFORCEMENT.		GA5016813	HOSE CLAMP, 1 SS LARGE (25-40/12W)
PRESSURE HOSE		GA5002783	HOSE CLAMP, 1 1/4, SS (30-45/13W)
GA2000200	HOSE, PRESSURE, 7mm, BLACK (250PSI), HOS7P	GA5002873	HOSE CLAMP, 1 1/2" SS (32-50/12W)
GA2000211	HOSE, PRESSURE, 12mm, BLACK, 250PSI, HOS13P, SOLD PER METER, ROLL = 250M	GA5003325	HOSE CLAMP, 2 SS, (40-60/12W)
GA2000216	HOSE, PRESSURE, 20mm, BLACK 250PSI, HOS20P, SOLD PER METER, ROLL = 100M.	GA5016815	HOSE CLAMP, 50-70 /12 C7 W4, SS
GA2000219	HOSE, PRESSURE, 25mm, BLACK 250PSI, HOS25P, SOLD PER METER, 100M IN A ROLL.	GA5004241	HOSE CLAMP, 60-80mm, S/S 31/2
GA2000223	HOSE, PRESSURE, 32mm BLACK (250 PSI), HOS32P, SOLD PER METER, 60M IN A ROLL.	CABLE TIES	
GA2000225	HOSE, PRESSURE, 38mm BLACK (250 PSI), HOS38P, SOLD PER METER, 20M IN A ROLL	GA5002173	CABLE TIE BLACK 100 X 2.5 [C]
NOTE: PRESSURE HOSE CAN BE IDENTIFIED BY ITS BLUE INTERNAL LAYER.		GA5003517	CABLE TIE BLACK 140 X 3.5 [C]
PVC HOSE		GA5004455	CABLE TIES BLACK 190 X 4.5 mm [C]
GA2000220	HOSE, SUCTION, PVC, 25mm, BLACK, HOS25PVC, SOLD PER METER, 30M IN A ROLL.	GA5000685	CABLE TIE BLACK 320 X 7.5mm [C]
GA2000227	HOSE, SUCTION, PVC, 40mm, BLACK, HOS40PVC, SOLD PER METER, 20M IN A ROLL	GA5000687	CABLE TIE, BLACK, 370X 4.8mm [C] 100PK
GA2000228	HOSE, PVC, 50mm, BLACK, HOS50PVC, SOLD PER METER, 20M IN A ROLL	GA5021235	CABLE TIE BLACK 540 X 7.5mm [C]
GA2000231	HOSE, SUCTION, PVC, 75mm, BLACK, HOS75PVC, SOLD PER METER	SPIRAL GUARD	
NOTE: PVC HOSE CAN BE IDENTIFIED BY ITS RIBBED OUTER SURFACE.		GA5015669	SPIRAL GUARD, 20mm, BLACK
SIGHT TUBE HOSE			
GA2000209	HOSE, CLEAR, 12mm, SIGHT TUBE, HOS12SIGHT, SOLD PER METER, ROLL = 20M	BRAKE LINE (BUNDY TUBE)	
GA2000210	HOSE, 12mm, CLEAR, WIRE REINFORCED, HOS12WSIGHT, SOLD PER METER, ROLL = 20M	GA5006565	BUNDY TUBE, BRAKE LINE, 1/4 (6m ROLL)

# Goldacres Terms & Conditions of Sale & Warranty

1. These terms and conditions apply to all goods and/or services supplied by us to you. You are agreeing to them by placing an order with us.
  2. Unless you have a previously approved account with us you must pay us the purchase price for the goods and/or services we supply to you, together with any other applicable fees or charges immediately on delivery or collection of the goods, or if ordered online or by phone on the placement of your order. All repairs or servicing must be paid for before we will release the goods to you. If you do have an
  3. Time is of the essence for all payments required under these conditions.
- Unless specifically stated otherwise, all prices which we quote or estimate to you are inclusive of GST for goods supplied within Australia and exclusive of GST for goods exported outside of Australia. If GST is payable on a Taxable Supply made by us to you, then you must also pay the amount of GST payable in respect of that Taxable Supply as an additional payment.
5. You must pay interest on any amounts not paid by the due date at a rate 2% higher than the rate for the time being fixed under section 2 of the Penalty Interest Rates Act 1983 (Victoria) as at the date the amount became due.
  6. Property in goods supplied (and in any goods which we may have previously supplied to you) remains with us until we have been paid in full for all amounts you owe us including payment for the goods and any applicable interest, fees and charges, and until then:
    - a. you hold the goods only as a bailee and have no right to claim any other interest in the goods, including any security for any liquidated or unliquidated debt or obligation that we owe you, or any lien over the goods;
    - b. we may enter and recover possession of the goods from any site owned, possessed or controlled by you and you
    - c. you must not deliver or on-supply any of the goods (nor any document of title to them) to any person, but if you do then you hold the proceeds of the on-supply of the goods on trust for us and must pay the amount to us immediately when received;
    - d. you must not allow any person to have or acquire any security interest in the goods nor create any absolute or defeasible interest in the goods in relation to any third party except as we may authorise;
    - e. you must insure the goods for their full insurable or replaceable value (whichever is higher) and provide us with details of the insurance if we request it;
    - f. you must not remove, deface or obliterate any identifying mark or number on any of the goods;
    - g. your right to possession of the goods ceases if we recall or recover the goods, or if you become insolvent, you enter into voluntary or involuntary administration or receivership, or a petition is filed for your bankruptcy or winding up.
- You further agree:
- h. that the retention of title under this clause is a security interest within the meaning of the Personal Property Securities Act 2009 (Cth) ("PPSA");
  - i. to grant us a purchase money security interest (as that term is defined in the PPSA) in relation to the goods;
  - j. to contract out of all of your existing and future rights under the provisions referred to in paragraphs (a) through to (i) of section 115(1) of the PPSA, to the full extent permitted;
  - k. to sign any documents or do any things which we may reasonably require to enable us to register a financing statement or financing change statement on the register (as defined in the PPSA);
  - l. to pay any costs we incur in registering and maintaining a financing statement (including registering a financing change statement) and enforcing the security interest created under these terms and conditions.
7. Risk in the goods passes to you upon their delivery to or collection by you.
  8. You hereby indemnify us and our employees, directors, contractors and agents against, and release us and them from, any loss (including reasonable legal costs and expenses) or liability incurred by us and/or them arising from any claim, demand, suit, action or proceeding by any person against us and/or them where such loss or liability arose directly or indirectly from or in connection with any breach of these terms and conditions or from use of the goods and/or services unless such liability is directly caused by the negligence or default of the person indemnified.
  9. You, or anyone on your behalf must not, and you must take steps to ensure that your employees, agents and contractors do not, nor assist anyone else to:
    - a. copy, memorise, reproduce, misappropriate or reverse engineer the whole or any part of the goods
    - b. challenge, contest or oppose any of our intellectual property rights
    - c. use any name or logo associated with the goods other than as we authorise you
    - d. divulge our confidential information to any person or use it for your own benefit except as we have expressly authorised or as required by law.
  10. Any specifications, drawings, details, statistics or performance figures we may have given you about the goods and/or services are only estimates and any deviation does not entitle you to make any claim against us. Any sample is provided only to indicate the general nature of the product, and we do not warrant that goods supplied will exactly correspond with any sample or with any previous or future goods supplied.
  11. Except as stated in any separate written warranty we may provide you with the goods or a quote, under no circumstances will we have any liability to replace or repair defects in the goods where:
    - a. the defects have not arisen solely from faulty materials supplied by us or faulty workmanship by us;
    - b. the goods have received maltreatment, inattention or interference or have been used, applied, packaged or stored other than in accordance with our instructions and recommendations;
    - c. products not manufactured by or approved by us have been used with the goods.
  12. Except as provided in these conditions, all express and implied warranties guarantees and conditions under statute or general law as to merchantability, description, quality, suitability or fitness of the goods for any purpose or as to design, assembly, installation, materials or workmanship or otherwise are expressly excluded. We are not liable for physical or financial injury, loss or damage or for consequential loss or damage of any kind arising out of the application, supply, layout, assembly, installation or operation of the goods or arising out of our negligence or in any way whatsoever. The exceptions in clause (12) extend to any Third Party Accessories installed in the goods.
  13. If any condition or warranty is implied into this agreement under the Competition and Consumer Act (2010) (Cth) or any equivalent State or Territory legislation and cannot be excluded, then our liability is limited to one or more of the following:
    - a. in the case of goods, the replacement of the goods or the supply of equivalent goods, the repair of the goods, the payment of the cost of replacing the goods or of acquiring equivalent goods, or the payment of the cost of having the goods repaired;
    - b. in the case of services, the supplying of the services again, or the payment of the cost of having the services supplied again.
  14. Nothing in these conditions is to be read or applied so as to exclude, restrict or modify or have the effect of excluding, restricting or modifying any condition, warranty, guarantee, right or remedy implied by law and which by law cannot be excluded, restricted or modified.
  15. Any quotes on pricing provided by us are consistent with the prevailing market at the time of quotation, including considerations as to rates of freight, insurance, customs, duties, exchange, shipping expenses, sorting and stacking charges, cartage, cost of materials and other charges affecting the cost of production prevailing at that date.
  16. Any increases in the quote price occurring either before or during the agreement, shall be to your account.
  17. Our quotations are open for acceptance within the period stated therein. If no period is stated, our quotations are open for acceptance for (14) fourteen days from the date the quote was given.
  18. All prices listed in our quotations and product catalogue are subject to change or alteration without notice.
  19. Unless we otherwise agree in writing we accept credit card or eftpos payments only.
  20. We do not accept payment by cheque unless we have previously agreed in writing to do so.
  21. Any goods you deliver to us must be free of any chemicals. If you deliver goods that are not free of chemicals, you must pay any costs incurred by us including the cost of our own staff in removing and disposing of the chemicals and cleaning the goods.
  22. If after 28 days of notifying you that your goods are ready for delivery we have received no communication from you, we retain any rights under the Australian Consumer Law and Fair Trading Act 2012 (Vic) to sell the goods to recover the value of any outstanding debt you may owe us.
  23. You are responsible for backing up any Data that you, or your agent, may install on the goods. If the Data is wiped, corrupted, or lost, we are not liable (whether we are negligent or otherwise) for any damage that may result from that Data being wiped, corrupted or lost.
  24. Before you use any of our goods you must check, and if necessary adjust, all settings to ensure the goods are properly calibrated.
  25. We are not liable to you for any failure by us to perform any of our obligations under this agreement caused by an impediment or circumstance beyond our control.
  26. In these terms and conditions,
    - a. "we", "us" or "our" means the entity within the Goldacres Group from which you purchase goods and/or services, including, but not limited to:
      - i. Goldacres Trading Pty Ltd ACN 061 306 732; and
      - ii. Goldacres Sprayer Centre Pty Ltd ACN 639 231 520
    - b. "you" or "your" means the individual or company that purchases goods and/or services from us.
    - c. "our confidential information" includes all of our secrets, ideas, know how, concepts, information, copyright, computer programs, manuals, precedents whether in writing or in any other form and all other information relating to us or our affairs, businesses, sales, marketing or promotional information, and any information about the ingredients, mix, make-up or manufacturing process of the goods
    - d. "goods" includes any associated services except where the context does not permit.
    - e. "Third Party Accessories" includes anything incorporated in the goods that is manufactured and supplied to us by a third party.
    - f. "Data" includes any information capable of being installed and or stored on an electronic device.
  27. Used Goods- For any second hand or used Goods sold, except to the extent that a manufacturer's warranty applies.
    - a. all used or second-hand Goods are sold on an "as is where is" basis with all existing or future inadequacies, faults or defects, if any, and whether they are known or unknown.
    - b. The Seller does not warrant the second hand or used Goods are fit for any purpose or free from any defects and does not warrant the accuracy of any service or repair history, meter or hour readings and to the extent permitted by law the Buyer releases the Seller from all liability arising or connection with any defects faults or inadequacies in the Goods and any warranty under these terms or at law excludes liability for costs other than what is reasonable or customary to rectify and does not include costs for time or labour, testing, travel or freight or packaging and handling.