

Pro-Reel

100-150m

Operator's & Parts Manual



100m - GA4904584

150m - GA4906985



GA8700158 REV 9 AUG 2021

GOLDACRES

Introduction	3	Hose Guide Assembly	23
Safety	4	Control Box, Antenna & Gun Mount	24
Safety Decals	6	Electric Motor & Guard Mounting 100m	25
Goldacres Warranty Statement	8	Electric Motor & Guard Mounting 150m	26
Goldacres Terms & Conditions	9	Hose Reel 100m.	27
General Information & Specifications.	11	Hose Reel 150m.	28
Key Features	12	Electrical Schematic	29
Connecting to a power source	13	Notes	30
Connecting to a water source.	13	Notes	31
Connecting the Engine Remote Shutdown	13		
Prepare for use.	13		
Operation	14		
Goldacres Pro-Reel® Single Reel Controller Configuration	15		
Supplying Power to the Remote Unit and the Pro-Reel® Control Box	16		
Pro-Reel® Control Box Configuration	16		
Restoring a Control Box to factory default settings	17		
Control Box Troubleshooting.	17		
Troubleshooting	19		
Technical Data	19		
Maintenance.	20		
Turbo 400 spray gun	21		
Pro-Reel Assembly.	22		

NOTE: Front Page, Spray gun is shown, but is an option only.

Contact
Goldacres
1-3 Morang Crescent,
Mitchell Park Vic 3355
P: 03 5342 6399
F: 03 5342 6308
info@goldacres.com.au

Please note: All information in this operator's manual is based on the latest product information available at the time of printing. The policy of Goldacres is one of continuous improvement and as such, Goldacres reserve the right to alter any specifications and designs without notice and without incurring any obligation regarding such changes. No part of this manual may be reproduced without written permission from Goldacres. All photographs and technical information remain the property of Goldacres.

Introduction

Congratulations on your purchase of a Goldacres sprayer. For more than a quarter of a century Goldacres has supplied Australian farmers with quality, innovative and technologically advanced spraying solutions - equipment designed in Australia for Australian conditions.

Goldacres not only produce Australia's finest range of spraying equipment - we also keenly value the unique relationship we enjoy with owners of our equipment. We are pleased to welcome you as a Goldacres owner and look forward to making your spray applications as efficient as possible.

Please use this comprehensive resource to gain a full understanding of your equipment, and don't hesitate to contact your Goldacres Dealer or Goldacres for further information.

A handwritten signature in blue ink, appearing to read 'Roger Richards', with a stylized flourish at the end.

Roger Richards
General Manager

Safety

General

The following pages outline important safety information. At Goldacres safety is a high priority. These safety and warning instructions **MUST** be followed to ensure the safe operation of your Goldacres equipment.

Explanation of key terms used in this operator's manual are:

DANGER - You will be killed or seriously hurt if you don't follow instructions

WARNING - You can be seriously hurt if you don't follow instructions

CAUTION - You can be hurt if you don't follow instructions

NOTE - Is used to notify people of installation, operation or maintenance information that is important but not hazard related.

The Operator

All operators of this equipment should be adequately trained in the safe operation of this equipment. It is important that all operator's have read and fully understand the operators manual prior to using this equipment.

All new operators should be trained in an area without bystanders or obstructions and become familiar with the sprayer prior to operation.

Safety Precautions

WARNINGS

- Keep clear of overhead obstructions.
- **CRUSH HAZARD** - Keep hands clear of moving parts.
- Any unauthorised modifications to this equipment may affect its function and create a serious safety risk.
- Never attempt to clean parts or nozzles, by blowing with mouth.
- Never attempt to siphon chemicals, or substances, by sucking.
- It is imperative that the vehicle manufacturer's specifications be checked and all instructions for use when transporting be adhered to at all times.

- Care should be taken when transferring liquid into the tank to ensure that the gross weight of the equipment does not exceed the carrying, braking and/or towing capacity of the vehicle to which the equipment is attached as specified by the vehicle manufacturer.
- Do **NOT** exceed the safe working pressure of this product (250 PSI).

NOTE: 1 LITRE WATER = 1KG.

- Water weighs 1kg per litre, however conversion factors must be used when spraying liquids that are heavier or lighter than water. Example: liquid urea has a density of 1.28 kg/L and will therefore be significantly heavier than water if the tank is filled completely.
- Suitable care should be taken when driving with the equipment attached to the vehicle. Consideration should be given to both the carrying capacity of the vehicle and the gradient of the terrain when determining the speed at which the vehicle can be driven safely.
- Ensure that the maximum speed of the vehicle, when loaded, is within the vehicle manufacturers limitations.
- Ensure equipment is securely fastened, or attached to the vehicle at all times.
- Regularly check the pump mounting bolts. The pump will always vibrate to some degree when operating, and this may work the bolts loose.

CAUTIONS

- A supply of fresh water should be with the equipment at all times.
- Standard polyethylene tanks are not designed for use with diesel fuel or any flammable liquid.
- Do not use this machine in ambient temperatures exceeding 40 degrees Celsius.
- Ensure that all bolts are tightened and secured before operation.
- Area surrounding equipment may become slippery when wet.

Continued over page

NOTES

- Always read and understand the operator's manual prior to operation of this equipment.
- It is the responsibility of the operator to ensure that there are no decals missing from the equipment and that any damaged or missing decals are replaced prior to operation.
- Goldacres equipment ordered or operated, outside the guideline limitations may not be warranted by Goldacres for successful performance. Operators working outside these limitations do so at their own risk, unless specific advice has been sought from and provided by Goldacres in writing.
- Always read and follow the chemical manufacturer's guidelines for safe application as per the chemical label. Particular attention should be given to the recommended target application rate of the chemical being applied as per the chemical label.
- Inspect the equipment thoroughly for damage and wear before operation.
- Flush chemicals from equipment immediately after use.
- Certain chemicals may be unsuitable for use with Goldacres standard plumbing designs. Consult your Goldacres dealer if in doubt.
- Do not operate the equipment while under the influence of any drugs, alcohol or if excessively tired.
- Make sure that the equipment complies with all relevant road regulations when transporting.
- When draining fluids from the equipment use appropriate, leak proof containers. Do not use food or beverage containers as someone may consume the contents by mistake.
- After reading the operator's manual if there is any thing that you do not understand please contact your Goldacres dealer.

Safe Chemical Use

The safe use of Ag chemicals with this equipment is the responsibility of the owner/operators. All operators should be trained in the safe use of Ag chemicals. Goldacres suggest that a relevant course is completed by owners/operators prior to operation of this equipment as a spray unit.

Personal Protective Equipment (PPE)

Always wear close fitting clothing and safety equipment designed for the job.

Chemicals can be harmful to humans, appropriate PPE should be used when handling chemicals.

Always refer to the chemical manufacturers label for guidelines on the appropriate PPE to use with the chemicals you are using.

Goldacres also suggest that you read and understand the following Australian standards:

- Australian Standard for Chemical protective clothing AS3765
- Australian Standard for Respiratory protection devices AS1715

Airborne particles

Always stand well clear of equipment during operation. Any spray drift is dangerous and may be hazardous to humans and animals.

Fluids under pressure

Do not disconnect any hoses, nozzles or filters while equipment is operating. Disconnecting these components while under pressure may result in uncontrolled fluid discharge which may be hazardous.

When the repair is complete ensure that all fittings and lines are secured before re-applying pressure.

Cuts, Stabs & Punctures

When Servicing machine, be mindful of sharp edges on parts such as trimmed cable ties, hose clamps, cut reinforced hose and the edges of plates and brackets as they could cause cut, stab or puncture injuries.

Continued over page

Mount Vehicle Safety

- Fully read the Owner's Manual before mounting this product to vehicle.
- Before mounting to a vehicle ensure that fitment complies with weight restrictions as specified by vehicle manufacturer.
- Overloading the vehicle, or operating it improperly, may cause an accident, injury or death.
- Do not fit your spray tank to the front of your vehicle.
- Do not load the vehicle in excess of the load limit capacity of the vehicle as recommended by the manufacturer.
- Filling the spray tank when fitted to the vehicle will result in changes to the handling and stability of the vehicle.
- Vehicle tyres should be inflated to the manufacturers recommended operating pressures.
- Do not attach other equipment to the vehicle spray tank. This may exceed the vehicle spray tank's designed capacity and function.
- Reduce speed when operating the vehicle spray tank when tank is loaded.
- Allow for greater braking distances when the vehicle spray tank is loaded.

- To reduce possible vehicle instability it is recommended the vehicle be stationary if spot spraying on a slope or hill.
- Ensure the vehicle or vehicle complies with all relevant regulations for use on farm or public roads.
- The weight of the unit significantly increases when filled to the maximum recommended level. Remember: 1 litre of water = 1 kilogram.
- The tank should be empty during attachment or removal of the tank from the vehicle.
- Do not allow any other person to ride on the vehicle at the same time this vehicle spray tank is fitted.
- Do not allow use of this sprayer by minors.
- Do not use the sprayer in the vicinity of other people or animals.

DANGER: Failure to adhere to these recommendations or follow these rules may result in injury or death to the operator and/or bystanders.

Anyone involved in the use or operation of the vehicle and vehicle spray equipment should be aware of, and trained in appropriate safety recommendations including those contained in this manual.

Safety Decals

Understanding safety decals and their purpose assists in the safe operation of your sprayer. Safety decals are there for your protection and it is the responsibility of the owner operator to replace damaged and/or missing safety decals.

Regularly review safety decals with operators. It is very important to ensure that all new machine components and replacement parts include current hazard identification decals.

Replacement safety decals can be ordered from all Goldacres dealers.



Item No	Part No	Description
1	GA8700006	Decal, Pro-Reel Autowind, Remote Control
2	GA5015991	Decal, Keep Hands Clear
3	GA5064615	Decal 100 mt Pro Reel Decal kit
	GA5064620	Decal 150 mt Pro Reel Decal Kit

Warranty

How to make a warranty claim

In the event of a fault or breakdown with your product, that you believe to be a warranty issue, the following steps must be taken.

1. Ensure that you have read the Operator's Manual and gone through the troubleshooting procedure.
2. If you continue to experience problems then please contact your local authorised Goldacres dealer. They will advise the method of warranty service for your product.

Sales documentation and information on delivery and installation must have been submitted before a claim can be requested.

Warranty Duration

Goldacres' standard warranty is 12 months from date of purchase.

Warranty Inclusions

- Chassis
- Steel Boom Components
- Tanks
- Electrical wire and connectors, (non-contaminated)
- Consoles and controllers
- Electrical motors and drivers
- Wheels, tyres and rims
- Pins and bushes*
- Pump housing
- Hydraulics
- Axle frame only
- Shockers and dampeners
- Wire cables
- Springs
- Drive chains*
- Wheel bearings*

*Failure caused by lack of lubrication not covered.

Warranty Exclusions

- Pump diaphragms
- Pump Seals

- Pump check valves
- Pump O-rings
- Filters and filter screens
- Filter O-rings
- Chemical Hoses
- Solenoid Diaphragms
- Hand Gun, lance or wand seals and O-rings
- Consumables, chemicals, fuels
- Items controlled by or fitted to Non Genuine parts or devices
- Contamination or corrosion of components
- Hose reel seal and O-rings
- Pressurised sprayer seals and O-rings
- Belts, couplings
- Adjustment of components
- Brake pads and components
- Globes / Bulbs
- Fuses
- Oil / fluids / filters (Unless contaminated or lost due to a warrantable failure)
- Boom break away tips
- Boom break away hinges
- Boom protectors
- Nozzles
- Nozzle Bodies
- Nozzle Body Brackets
- Nozzle Diaphragms and seals
- Wiper Blades
- Skid plates
- Wear plates
- Damaged items
- Worn or wearing items

Goldacres Warranty Statement

This warranty is the only warranty applicable to Goldacres new products (Products) and to the maximum extent as permitted by law, is expressly in lieu of any other conditions or warranties expressed or implied in relation to the Product.

In Australia, Goldacres Products come with guarantees that cannot be excluded under the Australian Consumer Law. You are entitled to a replacement or refund for a major failure and compensation for any other reasonably foreseeable loss or damage. You are also entitled to have the goods repaired or replaced if the goods fail to be of acceptable quality and the failure does not amount to a major failure.

This Warranty gives you additional protection for your Goldacres product and identifies a preferred approach to resolving warranty claims which will be the quickest and simplest for all parties subject to the exclusions, terms and conditions below.

Goldacres warrants its authorized Dealers who in turn warrants the original purchaser (Owner) that each new Goldacres Product will be free from proven defect in materials and workmanship for twelve (12) months from the date of delivery to the first owner according to conditions outlined herein.

Subject only to legislative obligations to the contrary, Goldacres shall not be liable for incidental or consequential damage resulting from ownership or use of a Product.

Goldacres does not authorize any person to create for it any other obligation or liability in connection with these products.

The repair of the defective Product qualifying under this warranty will be performed without charge for labour and parts by any authorized Goldacres service outlet within a reasonable time following the delivery of the Product, at the cost of the owner, to the service outlet / place of business advised

Goldacres in its absolute discretion may choose to pay the cost of replacement or repair of the product.

If the Product will be repaired or replaced, using parts as supplied by Goldacres, repair may include, at Goldacres discretion, the replacement of parts with functionally equivalent remanufactured, reconditioned or new parts.

Goldacres may request failed parts to be returned to the factory.

Conditions of Warranty Coverage

The warranty covers only conditions resulting directly from defects in workmanship or materials used under normal use and service conditions.

The Warranty is not transferable.

The owner is responsible for the performance of regular maintenance and service as specified in the owner's / operators manual applicable to the

product. Failure to follow regular maintenance as advised may invalidate the warranty.

The owner must provide the Goldacres Dealer with prompt written notice of the defect (within 14 days of it occurring) and allow reasonable time for repair and/or replacement.

Goldacres warranty cover excludes:

- Claims resulting from misuse, use of incompatible chemical or fluids, exceeding the Product's specifications including overloading, impact damage, negligence, accidental damage or failure to perform recommended service or service intervals or use the Product with good care.
- Failure due to faulty or inadequate electrical sources of power. 12 volt power sources must be checked for suitability to operate the product.
- The time taken to remove and re-install warranted parts, products or components fitted to other than Goldacres brand products will not be covered by Goldacres Warranty. Only labour and parts directly attributable to the repair of the Goldacres unit is covered.
- The cleaning of parts or products before or after the warranty repair. Cleaning time is considered a customer expense.
- Any Goldacres Product which has been repaired by other than an authorized Goldacres dealer in a way which, in the sole and absolute judgment of Goldacres, adversely affects its performance or reliability.
- The replacement of maintenance items such as diaphragms, batteries, belts, etc.
- Loss of time, inconvenience, loss of use of the product, liability to third parties or any other consequential damages including damage to crops, profits or revenue, other commercial losses inconvenience or cost of rental or replacement equipment.
- Incidental costs associated with a warranty repair including any travel costs, out of hours labour charges, transportation costs, freight costs or any communications costs.
- Goldacres products purchased at auction or in used condition.

Procedure for claiming:

Claims must be made through a Goldacres Dealer. To make a claim under this Warranty, you should

- Contact your local Goldacres Dealer,
- Phone 1300 301 853 to locate a Goldacres Dealer.

Owners returning products to a Goldacres Dealer will require the original Dealer tax invoice, a copy of the tax invoice or delivery docket and any instruction manuals, information booklets or guides that were shipped with the Product.

Goldacres Terms & Conditions

1. These terms and conditions apply to all goods and/or services supplied by us to you. You are agreeing to them by placing an order with us.

2. Unless you have a previously approved account with us you must pay us the purchase price for the goods and/or services we supply to you, together with any other applicable fees or charges immediately on delivery or collection of the goods, or if ordered online or by phone on the placement of your order. All repairs or servicing must be paid for before we will release the goods to you. If you do have an account with us the separate terms of that account apply.

3. Time is of the essence for all payments required under these conditions.

4. Unless specifically stated otherwise, all prices which we quote or estimate to you are inclusive of GST for goods supplied within Australia and exclusive of GST for goods exported outside of Australia. If GST is payable on a Taxable Supply made by us to you, then you must also pay the amount of GST payable in respect of that Taxable Supply as an additional payment.

5. You must pay interest on any amounts not paid by the due date at a rate 2% higher than the rate for the time being fixed under section 2 of the Penalty Interest Rates Act 1983 (Victoria) as at the date the amount became due.

6. Property in goods supplied (and in any goods which we may have previously supplied to you) remains with us until we have been paid in full for all amounts you owe us including payment for the goods and any applicable interest, fees and charges, and until then:

(a) you hold the goods only as a bailee and have no right to claim any other interest in the goods, including any security for any liquidated or unliquidated debt or obligation that we owe you, or any lien over the goods;

(b) we may enter and recover possession of the goods from any site owned, possessed or controlled by you and you grant us an irrevocable licence to do so;

(c) you must not deliver or on-supply any of the goods (nor any document of title to them) to any person, but if you do then you hold the proceeds of the on-supply of the goods on trust for us and must pay the amount to us immediately when received;

(d) you must not allow any person to have or acquire any security interest in the goods nor create any absolute or defeasible interest in the goods in relation to any third party except as we may authorise;

(e) you must insure the goods for their full insurable or replaceable value (whichever is higher) and provide us with details of the insurance if we request it;

(f) you must not remove, deface or obliterate any identifying mark or number on any of the goods;

(g) your right to possession of the goods ceases if we recall or recover the goods, or if you become insolvent, you enter into voluntary or involuntary administration or receivership, or a petition is filed for your bankruptcy or winding up.

You further agree:

(h) that the retention of title under this clause is a security interest within the meaning of the Personal Property Securities Act 2009 (Cth) ("PPSA");

(i) to grant us a purchase money security interest (as that term is defined in the PPSA) in relation to the goods;

(j) to contract out of all of your existing and future rights under the provisions referred to in paragraphs (a) through to (r) of section 115(1) of the PPSA, to the full extent permitted;

(k) to sign any documents or do any things which we may reasonably require to enable us to register a financing statement or financing change statement on the register (as defined in the PPSA);

(l) to pay any costs we incur in registering and maintaining a financing statement (including registering a financing change statement) and enforcing the security interest created under these terms and conditions.

7. Risk in the goods passes to you upon their delivery to or collection by you.

8. You hereby indemnify us and our employees, directors, contractors and agents against, and release us and them from, any loss (including reasonable legal costs and expenses) or liability incurred by us and/or them arising from any claim, demand, suit, action or proceeding by any person against us and/or them where such loss or liability arose directly or indirectly from or in connection with any breach of these terms and conditions or from use of the goods and/or services unless such liability is directly caused by the negligence or default of the person indemnified.

9. You, or anyone on your behalf must not, and you must take steps to ensure that your employees, agents and contractors do not, nor assist anyone else to:

(a) copy, memorise, reproduce, misappropriate or reverse engineer the whole or any part of the goods

(b) challenge, contest or oppose any of our intellectual property rights

(c) use any name or logo associated with the goods other than as we authorise you

(d) divulge our confidential information to any person or use it for your own benefit except as we have expressly authorised or as required by law.

10. Any specifications, drawings, details, statistics or performance figures we may have given you about the goods and/or services are only estimates and any deviation does not entitle you to make any claim against us. Any sample is provided only to indicate the general nature of the product, and we do not warrant that goods supplied will exactly correspond with any sample or with any previous or future goods supplied.

11. Except as stated in any separate written warranty we may provide you with the goods or a quote, under no circumstances will we have any liability to replace or repair defects in the goods where:

(a) the defects have not arisen solely from faulty materials supplied by us or faulty workmanship by us;

(b) the goods have received maltreatment, inattention or interference or have been used, applied, packaged or stored other than in accordance with our instructions and recommendations;

(c) products not manufactured by or approved by us have been used with the goods.

12. Except as provided in these conditions, all express and implied warranties guarantees and conditions under statute or general law as to merchantability, description, quality, suitability or fitness of the goods for any purpose or as to design, assembly, installation, materials or workmanship or otherwise are expressly excluded. We are not liable for physical or financial injury, loss or damage or for consequential loss or damage of any kind arising out of the application, supply, layout, assembly, installation or operation of the goods or arising out of our negligence or in any way whatsoever. The exceptions in clause (12) extend to any Third Party Accessories installed in the goods.

Continued over page

13. If any condition or warranty is implied into this agreement under the Competition and Consumer Act (2010) (Cth) or any equivalent State or Territory legislation and cannot be excluded, then our liability is limited to one or more of the following:

(a) in the case of goods, the replacement of the goods or the supply of equivalent goods, the repair of the goods, the payment of the cost of replacing the goods or of acquiring equivalent goods, or the payment of the cost of having the goods repaired;

(b) in the case of services, the supplying of the services again, or the payment of the cost of having the services supplied again.

14. Nothing in these conditions is to be read or applied so as to exclude, restrict or modify or have the effect of excluding, restricting or modifying any condition, warranty, guarantee, right or remedy implied by law and which by law cannot be excluded, restricted or modified.

15. Any quotes on pricing provided by us are consistent with the prevailing market at the time of quotation, including considerations as to rates of freight, insurance, customs, duties, exchange, shipping expenses, sorting and stacking charges, cartage, cost of materials and other charges affecting the cost of production prevailing at that date.

16. Any increases in the quote price occurring either before or during the agreement, shall be to your account.

17. Our quotations are open for acceptance within the period stated therein. If no period is stated, our quotations are open for acceptance for (14) fourteen days from the date the quote was given.

18. All prices listed in our quotations and product catalogue are subject to change or alteration without notice.

19. Unless we otherwise agree in writing we accept credit card or eftpos payments only...

20. We do not accept payment by cheque unless we have previously agreed in writing to do so.

21. Any goods you deliver to us must be free of any chemicals. If you deliver goods that are not free of chemicals, you must pay any costs incurred by us including the cost of our own staff in removing and disposing of the chemicals and cleaning the goods.

22. If after 28 days of notifying you that your goods are ready for delivery we have received no communication from you, we retain any rights under the Australian Consumer Law and Fair Trading Act 2012 (Vic) to sell the goods to recover the value of any outstanding debt you may owe us.

23. You are responsible for backing up any Data that you, or your agent, may install on the goods. If the Data is wiped, corrupted, or lost, we are not liable (whether we are negligent or otherwise) for any damage that may result from that Data being wiped, corrupted or lost.

24. Before you use any of our goods you must check, and if necessary adjust, all settings to ensure the goods are properly calibrated.

25. We are not liable to you for any failure by us to perform any of our obligations under this agreement caused by an impediment or circumstance beyond our control.

26. In these terms and conditions,

(a) "we", "us" or "our" means the entity within the Goldacres Group from which you purchase goods and/or services, including, but not limited to:

i. Goldacres Trading Pty Ltd ACN 061 306 732; and

ii. Goldacres Sprayer Centre Pty Ltd ACN 639 231 520

(b) "you" or "your" means the individual or company that purchases goods and/or services from us.

(c) "our confidential information" includes all of our secrets, ideas, know how, concepts, information, copyright, computer programs, manuals, precedents whether in writing or in any other form and all other information relating to us or our affairs, businesses, sales, marketing or promotional information, and any information about the ingredients, mix, make-up or manufacturing process of the goods

(d) "goods" includes any associated services except where the context does not permit.

(e) "Third Party Accessories" includes anything incorporated in the goods that is manufactured and supplied to us by a third party.

(f) "Data" includes any information capable of being installed and/or stored on an electronic device.

End _____

General Information & Specifications

General

The Pro-Reel hose reel is electrically driven with 12V from the vehicle battery. Up to 150 metres of hose can be fitted and a gunjet provides for even and accurate spray application.

Single or multiple units can be linked to an appropriate tank and pump configuration.

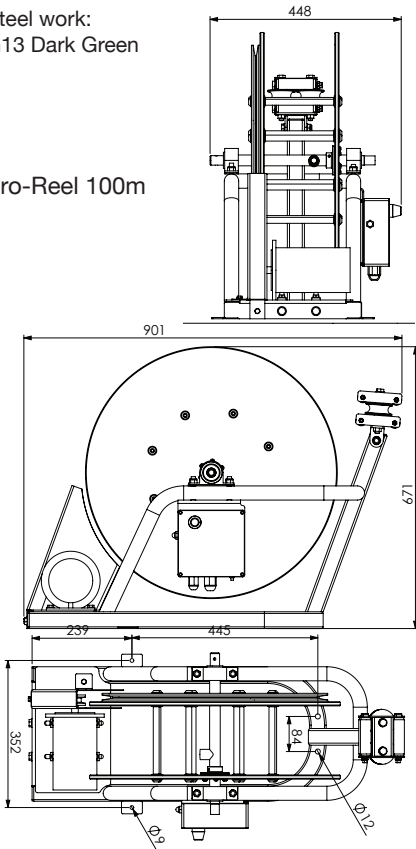
Chassis:

The chassis is an all steel construction, that is fully welded for superior strength. The chassis is shot blasted, primed and then protected by the Goldacres paint process for excellent chemical resistance and durability.

Paint Colours:

Steel work:
G13 Dark Green

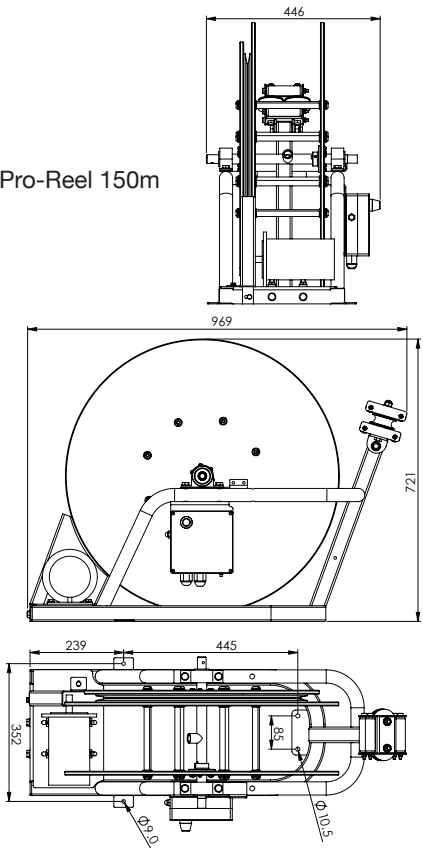
Pro-Reel 100m



Hose size	10mm
Hose length	100,150 metres
Pump requirements	Min 20 l/min

Connections	50 Amp Anderson plug (supplied)
Control type	Remote
Drive	12V electric

Pro-Reel 150m



Key Features



Pos.	Part No.	Function
1	-	Hose Feeder
2	GA5063500	Electrical Control Box, Antenna, Remote and loom (complete assembly)
3	GA5052970	Electrical motor
4	GA5023475	Spray Gun
5	-	V Belt Adjusters
6	GA5061710	Remote Aerial
7	GA5053245	Anderson Plug grey 50 amp
8A	GA5061715	Remote transmitter, 2 button, Black, Goldacres Pro Reel
8B	GA5072541	Cable, 2.5mm jack, 3 wire, Programming, suit Goldacres Pro-Reel remote control
9A	GA5061720	Remote transmitter, 2 button, Elsema, Pro Reel
9B	GA5072540	Cable, 2.5mm jack, 2 wire, Programming, suit Elsema Pro-Reel remote control
10	GA5072390	PCB Board (457PN3-1000)
11	GA5072380	Switch Circuit Breaker
12	GA5053245	50amp Anderson Plug
13	GA5072541	Cable, 2.5mm jack, 3 wire, Programing suit Pro reel remote control
14	GA5072545	Switch, Manual override
15	GA5023910	V Belt, A73 Size, suit Pro-Reel

PROREEL CABLE SIZE CHART @ 12vdc / 30 amps

30 amp overload protection

Distance from battery to Anderson plug (mts)	1	2	5	7.5	10
Cable in mm ²	2.5	6	16	25	25
AWG	13	10	6	4	3

Connecting to a power source

The following steps should be followed when connecting to a power source:

1. Ensure that the battery is 12V DC and that a 40amp, circuit breaker is fitted to the positive lead at the battery.
2. Using the Anderson plug supplied, connect the red connector to the positive (+) terminal and the black connector to the negative (-) terminal. It is recommended to get an electrician to wire this unit.

WARNING: Do NOT exceed max operating pressure of 250PSI. Do not use the nominally 1.5V Lithium cells in the remote unit as these are in fact above 1.8V when new, and may result in damage to the remote unit. Use only high quality 1.5V alkaline cells for good performance and product reliability.

Connecting to a water source

The following steps should be followed when connecting to a water source:

1. The ½" supply hose must have a pressure rating that exceeds the pump pressure, needs to be connected up to the hose reel.
2. Slide the supplied nut onto the hose, then slide the olive on so there is about 4-5mm of hose coming through the olive.
3. Fit the hose and tighten the nut to the Pro-Reel.

Connecting the Engine Remote Shutdown

WARNING: Do not have any power connected for this operation.

1. Disconnect the 6 pin plug from the control box.
2. Open the female plug that is on the electric motor side. Remove the seal from the "E" port
3. With a 3mm blue wire, fit the supplied green seal and crimp on the terminal pin.
4. Fit wire into the "E" port on the 6 pin plug and press home until you feel a click. The pin is seated. Close the cover on the plug.
5. Fit the two plugs together and ensure they seat correctly.
6. Feed the blue wire to the pump motor ON switch making sure that it is out of the way of moving parts and will not get hot from any parts of the engine.
7. Fit the wire to the earth wire on the engine ON/OFF switch.

Prepare for use

1. Inspect the unit to ensure there is no damage or wear which could lead to injury, further damage or reduce its performance.
2. Check all hoses and fittings, including spray gun, for leaks or damage.
3. Check all bolts and nuts to make sure they are tight and secure.
4. The Pro-Reel hose reel is operated by remote control and when fitted should be in a location which is easily accessible with clearance between the reel and all other items.

Operation

CAUTION: Keep hands, feet, hair and clothing away from all moving parts to prevent injury.

NOTE: Hose will unwind with a small amount of restriction when pulled out by hand

Procedure

1. While connected to a power source, the unit is always powered.
2. Remove the linch pin and check the spray gun.
3. Test the remote and manual rewind functions. The manual "REWIND" button is located on the control box.
4. Unwind the hose (taking care to not over-run the hose)
5. The hose can then be wound in by pressing the "REWIND" button on the remote control.
6. If the reel stops turning due to a hose jam DO NOT continue to push the button or damage may occur. Clear the cause of the jam prior to further operation. If the remote does not work after the jam, the control box overload may need to be reset. Press to reset.
7. When finished, rinse the line out with fresh water.
8. Retract all the hose and remount the spray gun.
9. When complete, disconnect the power at the Anderson plug.



Current overload reset button

Goldacres Pro-Reel® Single Reel Controller Configuration

This manual provides instructions for the configuration of the Goldacres Pro-Reel® wireless controller system.



Figure 1: From left to right, Pro-Reel® Control Box, the configuration cable and the hand-held remote unit.

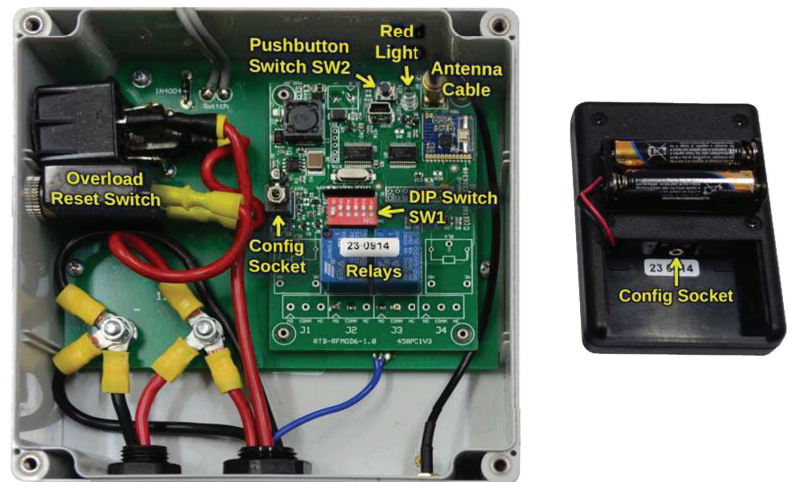


Figure 2: On the left is an inside view of the Pro-Reel® Control Box showing the parts relevant to setup. On the right is a view of the hand-held remote unit underside with the battery cover and battery pack removed, exposing the configuration socket.

Supplying Power to the Remote Unit and the Pro-Reel® Control Box

Refer to figure 2 on page 1 for information on the locations of the various parts.

CAUTION: Ensure that battery polarity is correct when inserting batteries into the remote unit battery compartment.

WARNING: Do NOT use the nominally 1.5V Lithium cells in the remote unit as these are in fact above

1.8V when new and may result in damage to the remote unit. Use only high quality 1.5V alkaline cells for

good performance and product reliability.

For the remote unit, ensure that a suitable pair of 1.5V cells are inserted correctly into the unit. The battery cover

is on the rear of the unit at the base. Two size 'AAA' cells will be required. Spring contacts in the battery holder

always connect to the negative ends of the cells. Also under the battery cover can be found the configuration

socket (see figure 2 on page 1) which is a 2.5mm socket. This is used to connect the remote unit and the control

box together with the supplied configuration cable to enable programming of remote unit buttons to control box

relays. The battery holder must be removed in order to access the configuration socket of the remote unit, but the

batteries should be left in the holder to ensure that the remote unit is still powered.

The Pro-Reel® control box should already be suitably configured with 12V DC vehicle battery power.

Pro-Reel® Control Box Configuration

Configuration of the system is required if replacing a damaged or lost remote (hand held transmitter) unit, since

each transmitter and receiver are paired using unique identifier codes.

2.1 Configuring a Remote Unit to control a Control Box's relays.

In the event that a remote unit must be replaced or a new one added to an existing configuration, the following steps will enable a new remote unit to be used with an existing control box. The location of relevant parts can be identified using figure 2 on page 1.

CAUTION: Do not touch any component in the control box except those parts referred to in the following procedure.

1. Check that the DIP switch (SW1 in the control box) is set as follows:

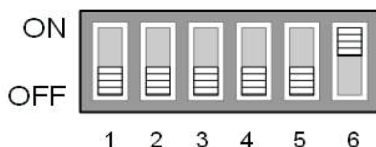


Figure 3: DIP Switch (SW1) setting. Note that all switches are in the OFF position except switch 6.

2. Connect the configuration cable between the remote unit and the control box via the configuration sockets. If done successfully, the red light of each unit will light up continuously. If both lights do not ensure that neither light is lit and then reconnect the cable. (If, after several attempts to establish the configuration connection, the lights do not both remain lit, then consult the troubleshooting section, section 3, of this manual.)
3. Once the red lights of both the remote unit and the control box remain lit while the configuration cable is connected, press and hold push-button switch, SW2, in the control box until the control box's red light turns off, then release the push-button switch. The control box's red light should remain off but the remote unit's red light should still be on.
4. On the remote unit, depress the Rewind button. The light on the remote unit should turn off and the light in the control box should very briefly turn on and then

immediately off again.

5. Now depress the Engine Off button on the remote unit. The light on the remote unit will turn back on and the light in the control box should also switch on and remain on. This indicates that the configuration is complete.
6. Disconnect the configuration cable and test the system by pressing each of the two remote unit buttons in succession to observe whether or not they perform as required.

This completes the setup and test of a hand-held remote unit with a Pro-Reel® control box. If there are problems

with operation of the system, the control box can be restored to factory settings as follows:

Restoring a Control Box to factory default settings

Do not connect the configuration cable since this operation is done to the control box alone.

1. Press and hold down the control box push-button switch, SW2, for at least 12 seconds. Time this by counting slowly to 12, during which time the red light will switch on and off various times and for various durations. When the required time has elapsed, the light will blink on and off continuously at a fast rate (flashing about twice per second). This means that 12 seconds has elapsed.
2. Release the push-button switch. The control box's factory settings have now been fully restored.
3. Perform the configuration process again, as described in section 2.1, if required.

The control box factory restore process will always restore settings back to their factory defaults. If any settings

have been altered for an alternative mode of operation, these will have to be configured again.

Control Box Troubleshooting

The following list of items may be used to aid in fault finding if the control box fails to respond to remote unit transmissions. Use this when the control box is opened for configuration of a new or replacement remote unit if the equipment fails to perform correctly upon configuration.

NOTE: Do not attempt repairs to the control box internal circuitry or associated wiring looms, connectors and external associated equipment. This list is only intended as a basic guide to resolve any minor issues or to simply locate potentially major issues that may result from wear of the equipment. Refer all servicing to the product supplier.

CAUTION: Do not make physical contact with any of the components in the control box except to connect the configuration cable to the configuration socket, to set the DIP switch (SW1) as described in section 2.1 (if it has been altered) and to press the push-button switch (SW2) as described in section 2.1. Contamination of circuitry or electrostatic discharge into the circuit may result in permanent damage to the control box.

1. Check control box power as described in section 1. Ensure that adequate vehicle battery power is available to the Pro-Reel® control box and that it is correctly connected. The system is designed for 12V DC automotive power supplies.
2. Press and release the Pro-Reel® control box current overload reset button (on the left side of the control box exterior) in case an overload has occurred. If the unit now works, it is advisable to inspect the system to discover, if possible, what caused the overload and rectify the problem.
3. Check that the hand-held remote unit batteries are correctly oriented and that they are serviceable. Replace them if uncertain about their age. Never mix old and new batteries or batteries of different types. When replacing batteries, always replace both with a pair of the same type of batteries. Mixing batteries can result in damage to the remote unit if either battery

leaks. Refer to section 1 regarding the correct selection of battery types.

4. Perform the configuration procedure again as described in section 2.1 but do a factory restore of the control box first, if not already done, as described in section 2.2. Ensure that the configuration cable that was supplied with the unit is used. Disconnect the configuration cable when done.
5. When pressing the remote unit buttons to test operation, check that the remote unit red light lights up while a button is being pressed. If not then either the remote unit has not been correctly configured or the battery voltage is not correct or it is a faulty unit.
6. If the remote unit light lights up when pressing a button, listen for relay clicking sounds inside the Pro-Reel® control box. Each remote unit button must control a relay in the control box and when they are operating the relays can clearly be heard. This ensures that remote control communications is working.
7. Visually inspect the wiring looms and connectors attached to the Pro-Reel® control box and associated external devices for correct fit and any possible wear or damage to wires, wire insulation or connector housing. Inspect also for signs of water damage or corrosion. Damaged connectors or wiring looms should be immediately repaired (refer to your product supplier) as they pose a short circuit risk to the vehicle's electrical system. Never operate a unit with damaged wiring or damaged, loose or poorly fitting connectors as this poses a risk to both the equipment and the vehicle's electrical system.
8. Check the external antenna connection and inspect for any damage to the antenna cable or a damaged or loose connector at the exterior of the control box. Also check that the control box antenna connector is correctly attached to the control box SMA connector inside the control box when opened. The SMA connector is the gold coloured connector connecting the antenna cable to the control box

receiver board (see figure 2 on page 1).

The connector should not be loose but do not tighten further if it is not loose.

Loss of received signal strength that may result from damaged or poorly connected antenna cables or connectors will typically become a problem when the remote unit is at a distance from the control box.

CAUTION: Do not make physical contact with any part of the control box printed circuit board or components except to check the antenna connector.

9. Visually inspect the interior of the Pro-Reel® control box while it is open for any loose wires or connections or any loose foreign object that may result in short circuiting of exposed electrical conductors or components. Ensure that all connections are secure and that the control box is free of foreign objects before refitting the control box cover.

If the problem cannot be determined, then refer to your product supplier for assistance.

Troubleshooting

The troubleshooting information is provided as a reference when your reel is not functioning correctly.

To ensure that you receive the best possible service, it is recommended that you exhaust all applicable troubleshooting solutions shown prior to calling your dealer, or Goldacres, for service advice.

Problem	Possible Cause	Possible Remedy
Reel does not wind	Hose jam	Unwind to clear jam
	Overload fuse tripped	Press the Overload reset button
	Fuse blown	Check/replace fuse
	Loose connections	Check battery and connections
	Manual Rewind switch faulty	Check manual switch
	Loose/broken drive belt	Adjust or replace drive belt
	Seized bearings on reel shaft	Replace bearings
Remote does not operate at distance	Damaged aerial or lead	Repair or replace aerial or lead
	Flat Battery	Replace battery
Remote not calibrated with the receiver	Recalibration required	Refer to Calibration instructions
	Faulty transmitter/receiver	Replace batteries
		Replace Remote
		Refer to Calibration instructions
	Battery replaced in remote	Batteries are not correctly fitted

Technical Data

Supply voltage: 11.0 – 28 VDC, 10.0 – 28 VAC.

Can use Elsema DC or AC power supply,

12PP1000 or 24PP. 433.920 (Standard),

433.664, 433.408, 433.152 MHz.

433 MHz Frequencies:

Relay Output: Two relays rated at 8 amps /240V each.

Recommended Antenna:

ANT433 series (433MHz Series)

Maintenance

To ensure that you get the most from your hose reel, it is important to regularly maintain and service. Always use quality multipurpose lubricants.

	Daily	Weekly	Monthly	Yearly
Check hose and filters	✓			
Check battery condition	✓			
Check guards	✓			
Check reel operation	✓			
Check belt tension		✓		
Check cables and terminals		✓		
Replace remote battery			✓	
Check bearings			✓	✓
Replace belt				✓
Check electric motor				✓
Replace “O” rings in inlet swivel				✓

Turbo 400 spray gun

The Turbo 400 spray gun is ideally suited to the pro reel range as it can handle up to 700 psi pressure and a 70 l/min flow rate. It is available with a wide range of nozzles to suit many spraying applications.















The standard nozzle supplied with the Turbo 400 spray gun is a 2.5mm, please check chart as shown below for other nozzle options.



The lever on the left hand side of the gun will adjust the flow from a wide fan with the lever fully down to a pencil flow with the lever fully up, this can be adjusted to gain greater spraying distance when the target is far away.

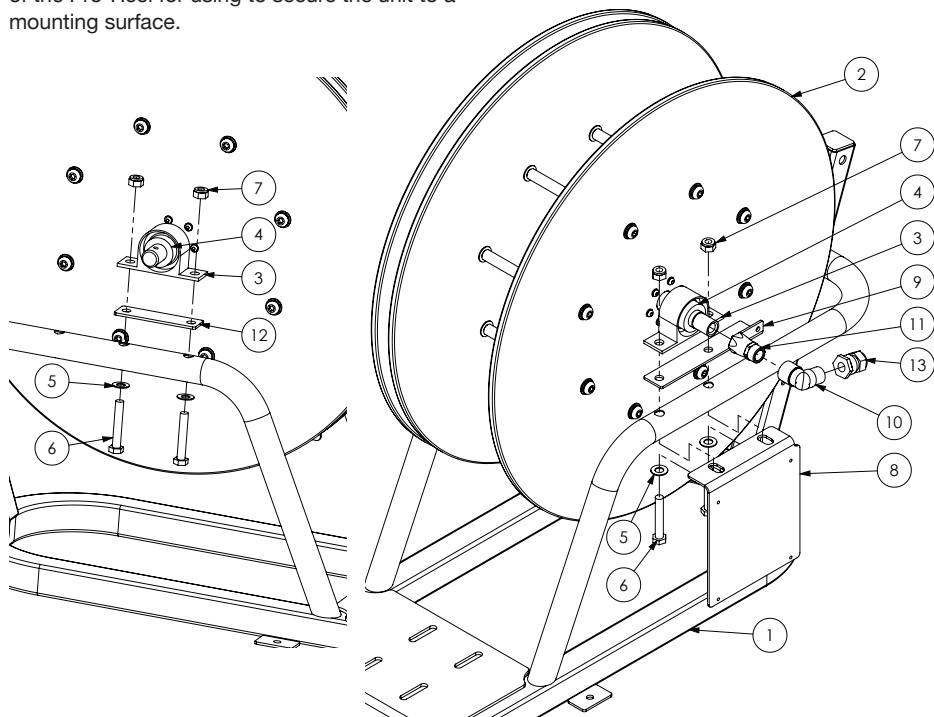
A trigger lock can be used for continuous spraying.

The gun features a “Turbo” Atomiser to produce an extremely fine, soft impact spray ideal for spraying in greenhouses, simply slide the end nozzle should back or forward to alter the spray effect.

CODE	Ø (mm)	l/min (indicative cone nozzle flow rates)											
		5 bar		10 bar		15 bar		25 bar		35 bar		40 bar	
													
GA2000108	1.5	3.28	2.99	4.64	4.22	5.69	5.17	7.34	6.68	8.69	7.90	9.29	8.45
GA2000109	2.0	5.67	4.78	8.02	6.75	9.83	8.27	12.69	10.68	15.01	12.64	16.05	13.51
GA0100018	2.5	8.00	6.34	11.31	8.97	13.85	10.98	17.88	14.18	21.16	16.78	22.62	17.94
GA5071875	3.0	10.08	7.50	14.26	10.61	17.46	12.99	22.54	16.77	26.67	19.85	28.52	21.22
GA5023477	3.5	12.33	8.15	17.44	11.53	21.36	14.12	27.58	18.23	32.63	21.57	34.88	23.06

Pro-Reel Assembly

There are mounting holes drilled in the frame of the Pro-Reel for using to secure the unit to a mounting surface.



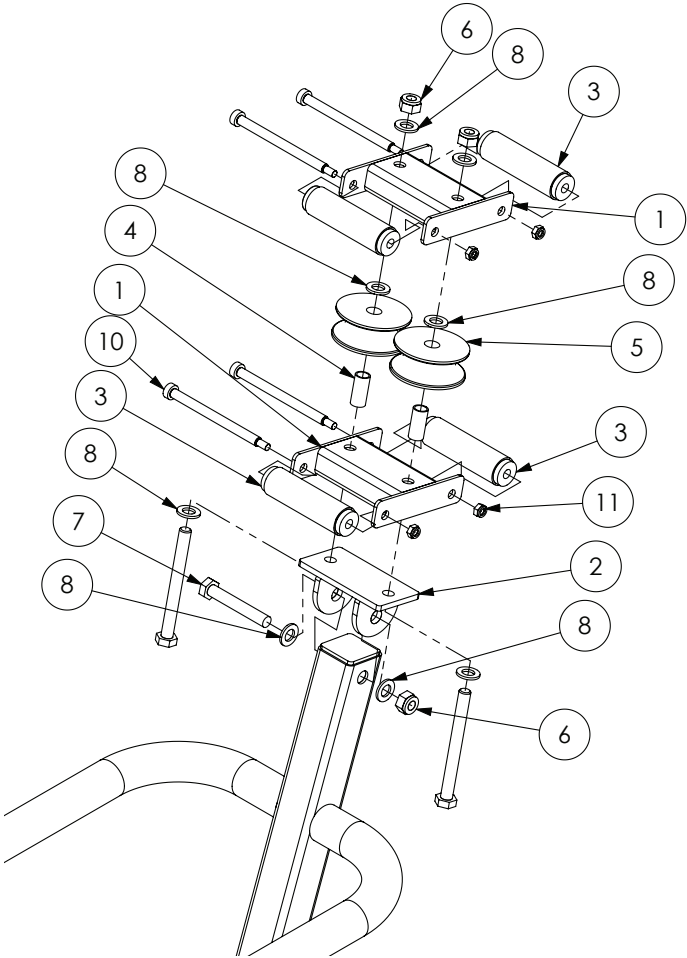
Hose Repair Kit

GA1100053

Sales Kit, Hose Reel Tube Repair, OD 12mm Nylon Tube

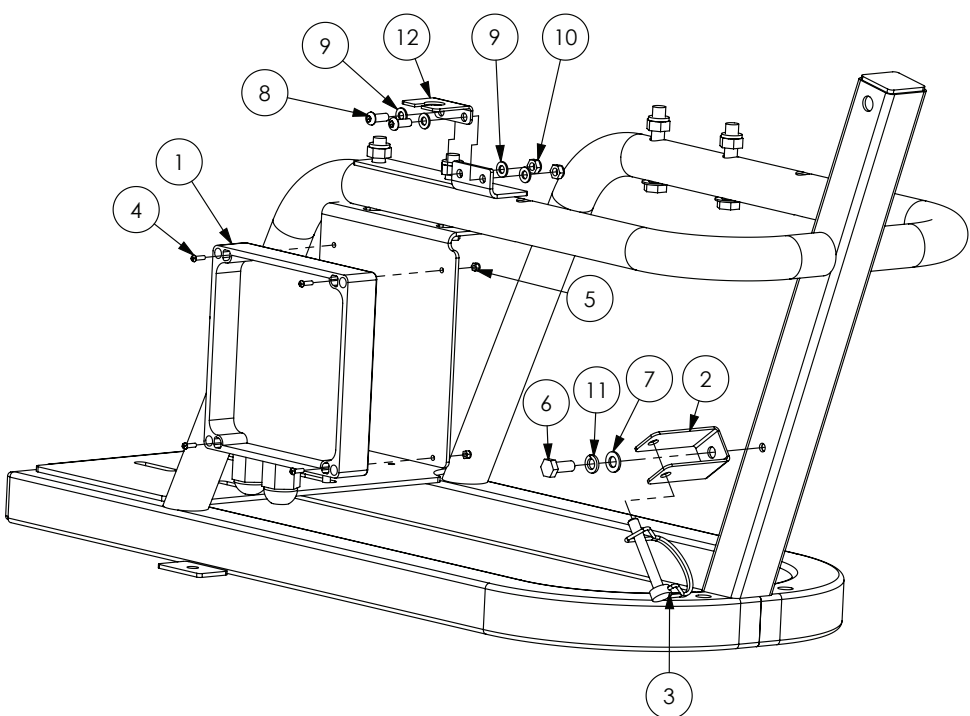
Pos.	Part No.	Description	Qty.
1	GA4660585	Frame, 2015 100m Pro Reel	1
	GA4660510	Frame, 2014 150m Pro Reel	
2	GA4914000	Hose Reel, 100m Assembly	1
3	GA5061735	Housing, to suit SA205-14 Bearing	2
4	GA5061740	Bearing SA205-14	2
5	GA5000115	Washer flat SS 10mm	4
6	GA5011175	Bolt M10 x 60 ZP GR8.8	4
7	GA5000141	Nut M10 Nyloc	4
8	GA4508615	Control Box Mounting Plate	1
9	GA4400155	Plate, Bearing and Antenna Mount, 100-200m Pro Reel	1
10	GA5048150	½" BSPT - ½" BSPT male, 90 Degree elbow	1
11	GA5023476	½" BSPM - ½" BSPF Swivel Connection	1
12	GA4400160	Plate, Bearing Mount, Pro Reel	1
13	GA5023170	External compression Fitting, include olive, ½" T x ½" BSPF C073	1

Hose Guide Assembly



Pos.	Part No.	Description	Qty.
1	GA4600180	Hose Guide roller side	2
2	GA4600080	Pro Reel, Hose Guide Pivot Bracket	1
3	GA5023260	Roller 92mm long	4
4	GA4660365	ERW 12.7mm OD x 1.2mm WT cut 27mm	2
5	GA5023255	Roller Inside pulley (Black Delrin)	2
6	GA5000141	Nut M10 Nyloc	3
7	GA5006101	Bolt M10 x 65 ZP GR8.8	1
8	GA5000117	Washer 10mm SS Heavy duty	8
9	GA5011139	Bolt M10 x 100 Gr4.6 ZP	2
10	GA5023280	Shoulder Bolt Ø8 x 100 x M6 Thread	4
11	GA5048115	Nut M6 Nyloc ZP	4

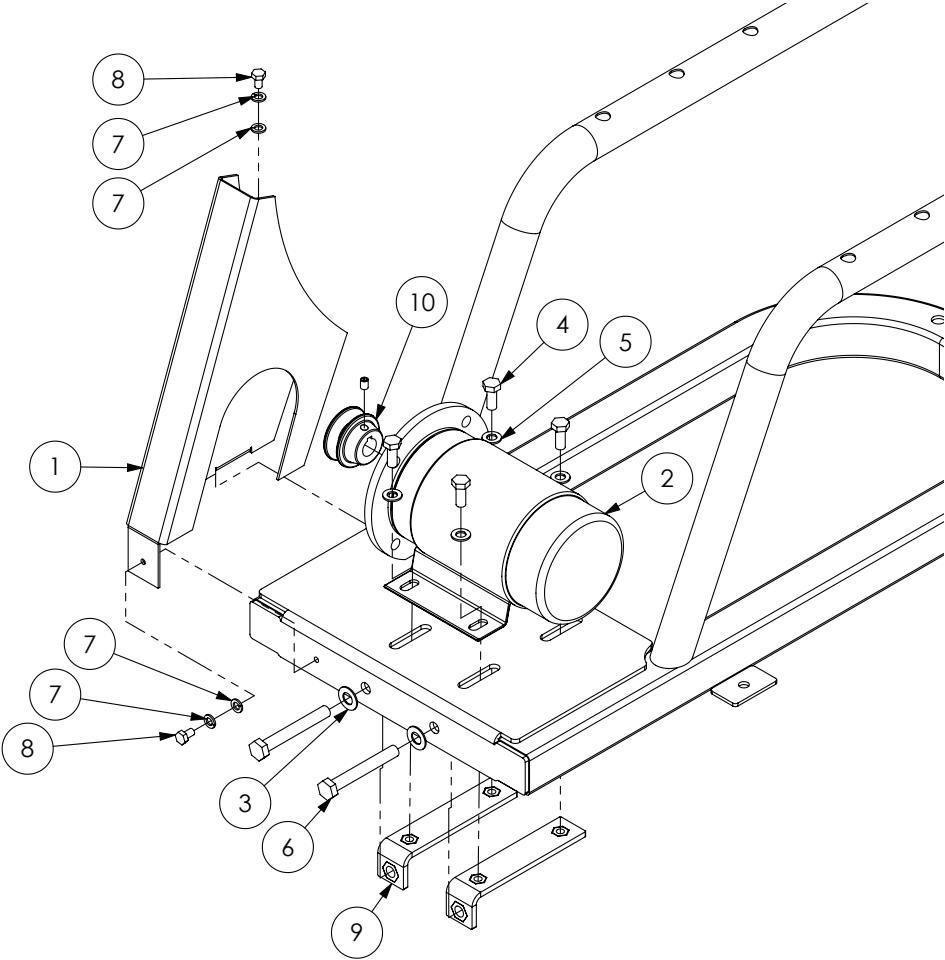
Control Box, Antenna & Gun Mount



Antenna Parts	
GA5061710	Antenna, Auto Wind Control Box, Pro Reel, small SMA connector, pre 2020
GA5061711	Antenna, Auto Wind Control Box, Pro Reel, large N connector
GA5061712	Antenna adaptor, Auto Wind Control Box, Pro reel, small SMA to N connector
GA3000614	Antenna Only, Suit Pro Reel Receiver

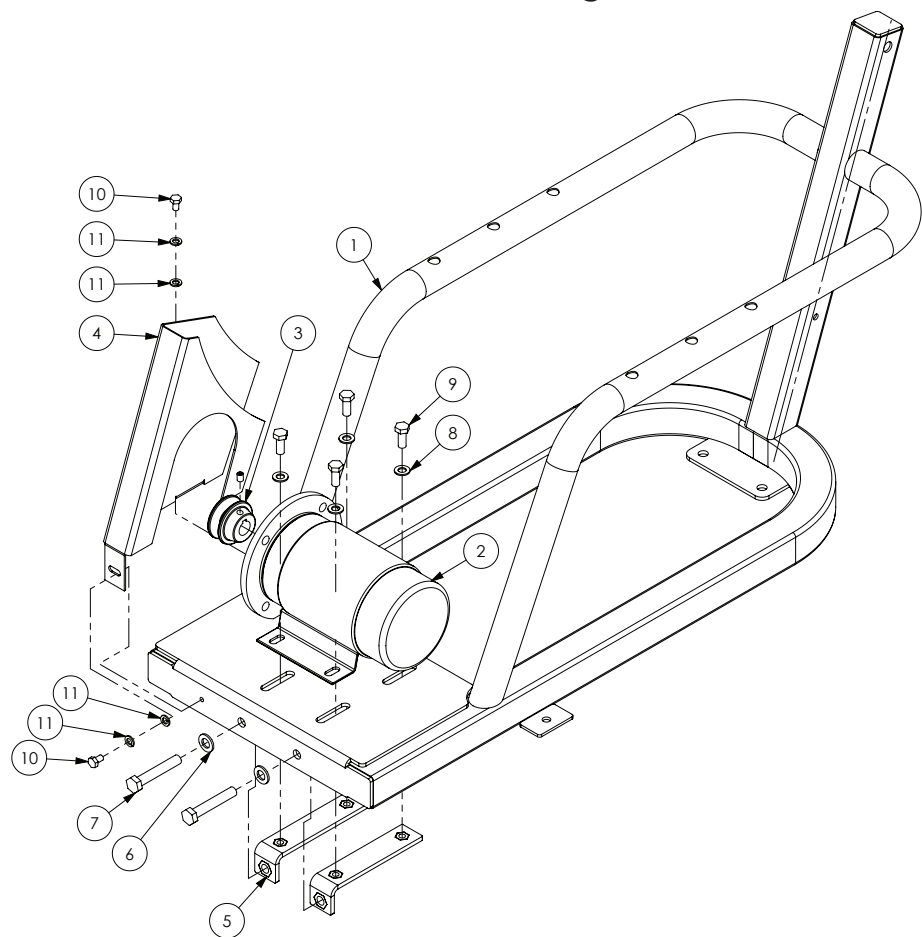
Pos.	Part No.	Description	Qty.
1	GA5063500	Auto wind control box & antenna	1
2	GA4534635	Bracket Nozzle suit small booms	1
3	GA5013003	Pipe linch pin, 8 OD x 60 long	1
4	GA5002237	Pan Head Screw M3 x 35mm	4
5	GA5049465	Nut M3 Nyloc SS	4
6	GA5004085	Bolt M8 x 20	1
7	GA5003643	Washer 8mm HD SS	1
8	GA5004050	BHCS M6 x 16mm SS	2
9	GA5004437	Washer 6mm SS	4
10	GA5048115	Nut M6 Nyloc ZP	2
11	GA5004919	Washer 8mm Spring SS	1
12	-	Antenna Mount Plate - Included with antenna	1

Electric Motor & Guard Mounting 100m



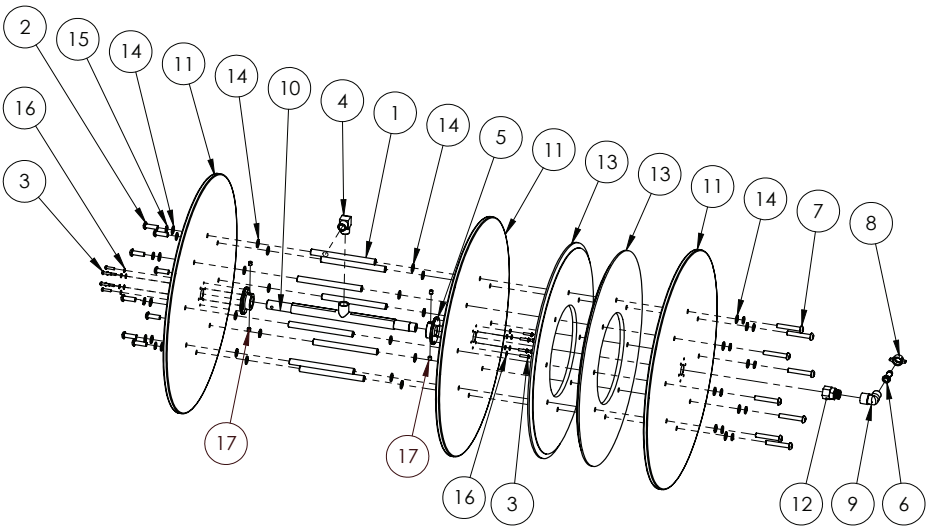
Pos.	Part No.	Description	Qty.
1	GA4400035	Pro Reel 100 m Belt Guard	1
2	GA5052970	DC series 4 electric motor for hose reel	1
3	GA5000115	Washer 10mm Flat SS	2
4	GA5004085	Bolt M8 x 20	4
5	GA5003643	Washer 8mm HD SS	4
6	GA5006073	Bolt M10 x 75 ZP GR8.8	2
7	GA5004447	Washer 6mm Spring SS	4
8	GA5004029	Bolt M6 x 10	2
9	GA4660515	Adjuster Bracket, Pro Reel Motor 2014	2
10	GA5072120	Pulley, PCD 1½", 16mm bore, 5mm keyway	1

Electric Motor & Guard Mounting 150m



Pos.	Part No.	Description	Qty.
1	GA4660510	2015, 150m Hose Reel Frame	1
2	GA5052970	DC series 4 electric motor for hose reel	1
3	GA5072120	Pulley, PCD 1½", 16mm bore, 5mm keyway, Pro Reel	1
4	GA4400070	Belt Guard, Pro Reel 150-200 m,	1
5	GA4660515	Adjuster Bracket, Pro Reel Motor 2014	2
6	GA5000117	Washer 10mm SS Heavy duty	3
7	GA5011175	Bolt M10 x 60 ZP GR8.8	2
8	GA5003643	Washer 8mm HD SS	4
9	GA5004085	Bolt M8 x 20	4
10	GA5004029	Bolt M6 x 10	2
11	GA5004447	Washer 6mm Spring SS	4

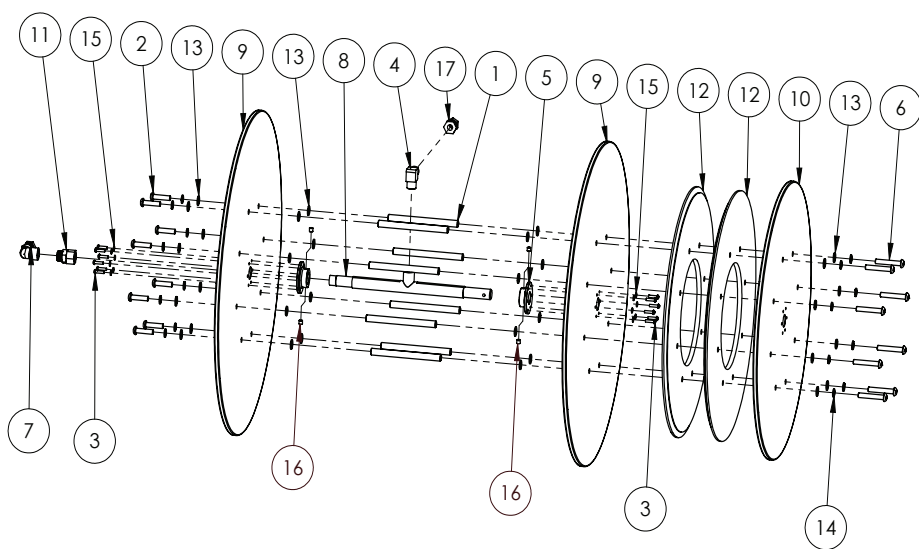
Hose Reel 100m



Hose Repair Kit		
GA1100053	Sales Kit, Hose Reel Tube Repair, OD 12mm Nylon Tube	

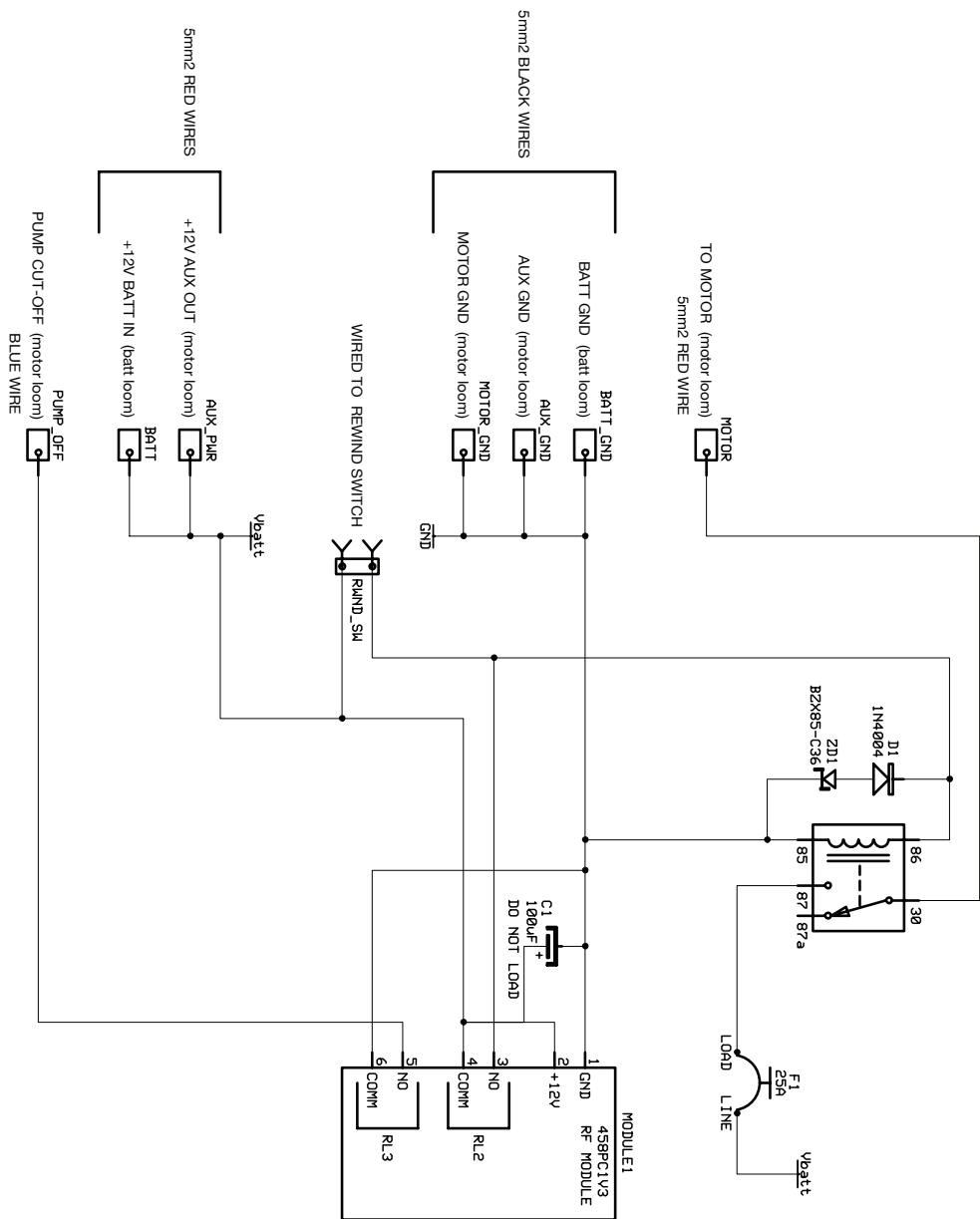
V-Belt			
GA5023910		V Belt, A73 Size, suit Pro-Reel	
Pos.	Part No.	Description	Qty.
1	GA4583125	Spacer Hose Reel Remote Control Long	8
2	GA5048120	BHCS M10 x 30 SS A2-70	8
3	GA0500004	BHCS M5 x 20 SS A2-70	12
4	GA5023610	Brass Elbow 1/2 x 1/2 Male Thread	1
5	GA4583455	Flange, Bolt on, suit hose reel shaft	2
6	GA5078264	Hose Barb, 1/2", D13 with o ring, Udor 060826	1
7	GA5072300	BHCS M10 x 60 SS GR8.8	8
8	GA5075787	Nut, 1/2", Brass with tabs, Udor, 060409	1
9	GA5048150	Plumbing adaptor, Elbow, 90 degree, 1/2 male thread x 1/2 female thread, Cast	1
10	GA4600085	Pro Reel, Shaft Assembly	1
11	GA4583425	Side Plate, 10mm Uniboard Poly suit hose reel MY13	3
12	GA2000362	Swivel, Ball Bearing, Brass, 1/2" BSP Male / Female	1
13	GA5071975	V Belt Disk, Pro Reel	2
14	GA5000117	Washer 10mm Flat SS HD	32
15	GA5000137	Washer 10mm Spring SS	16
16	GA5003983	Washer 5mm Flat SS	12
17	GA5078647	Grub Screw, M8 x 1.25P x 8mm	4

Hose Reel 150m



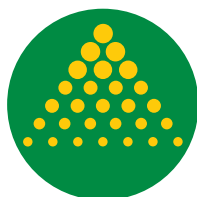
Hose Repair Kit			
GA1100053		Sales Kit, Hose Reel Tube Repair, OD 12mm Nylon Tube	
V-Belt			
GA5023910		V Belt, A73 Size, suit Pro-Reel	
Pos.	Part No.	Description	Qty.
1	GA4583125	Spacer Hose Reel Remote Control Long	8
2	GA5006061	BHCS M10 x 40 SS	8
3	GA0500004	BHCS M5 x 20 SS A2-70	12
4	GA5023610	Brass Elbow 1/2 x 1/2 Male Thread	1
5	GA4583455	Flange, Bolt on, suit hose reel shaft	2
6	GA5072300	BHCS M10 x 60 SS GR8.8	8
7	GA5048150	Plumbing adaptor, Elbow, 90 degree, 1/2 male thread x 1/2 female thread, Cast	1
8	GA4600085	Pro Reel, Shaft Assembly	1
9	GA4583426	Side Plate large, Uniboard Poly suit hose reel MY13	2
10	GA4583425	Side Plate, 10mm Uniboard Poly suit hose reel MY13	1
11	GA2000362	Swivel, Ball Bearing, Brass, 1/2" BSP Male / Female	1
12	GA5071975	V Belt Disk, Pro Reel	2
13	GA5000117	Washer 10mm Flat SS HD	32
14	GA5000137	Washer 10mm Spring SS	16
15	GA5003983	Washer 5mm Flat SS	12
16	GA5078647	Grub Screw, M8 x 1.25P x 8mm	4
17	GA5023170	External compression Fitting inc olive 1/2Tx1/2BSPF C073	1

Electrical Schematic



Notes

Notes



GOLDACRES

1-3 Morang Crescent, Mitchell Park Vic 3355

P: 03 5342 6399 F: 03 5342 6308

info@goldacres.com.au

goldacres.com.au