

# Small Booms 3m-12m Manual Folding

## Operator's & Parts Manual



GA8700803 REV 2 - APR 2018



**GOLDACRES**  
*Australia's World Class Sprayers*

# Contents

Safety. . . . .	3
Goldacres Warranty Statement. . . . .	7
Terms & Conditions . . . . .	8
General Information & Specifications. . . . .	10
Compact & Folding Booms Operation . . . . .	11
Boom Height Adjustment . . . . .	12
Upgrade Procedure - Spotmate 100. . . . .	13
Crossfold - Grease Points. . . . .	15
Crossover Twin Link - Booms . . . . .	16
Crossover Twin Link - Grease Points & Spring Adjustment. . . . .	17
Crossfold & Twin Link - Folding Instructions . .	18
Towbar Boom Deluxe . . . . .	20
Towbar Boom Roadside . . . . .	22
Spotmate 100 Boom . . . . .	24
3M Boom 6 Nozzle Manual Fold. . . . .	26
4M Boom 8 Nozzle Manual Fold. . . . .	28
5M Boom 10 Nozzle Manual Fold. . . . .	30
6M Boom 2 Stage Manual Fold . . . . .	32
8M Boom 16 Nozzle Manual Fold. . . . .	34
8M Boom 20 Jet Nozzle Manual Crossfold . .	36
10M Boom 20 Jet Nozzle Manual Crossfold .	38
10M Boom Twin Link Levelling Manual Fold .	42
10M Boom Twin Link Levelling Manual Fold .	46
12M Boom Twin Link Levelling Manual Fold	
Crossover. . . . .	50
Notes: . . . . .	58

## Contact

### Goldacres

1-3 Morang Crescent,

Mitchell Park Vic 3355

P: 03 5342 6399

F: 03 5342 6308

[info@goldacres.com.au](mailto:info@goldacres.com.au)

### Disclaimer

Any advice or recommendations given by Goldacres, Goldacres' dealers, or employees is given in good faith and provided based on the best information available to us. No liability or responsibility is accepted or implied as a result of any information or advice tendered in this operating manual or by Goldacres its agents or employees. The end user accepts all responsibility arising from that advice. No part of this manual may be reproduced without written permission from Goldacres. All photographs and technical information remain the property of Goldacres.

# Introduction

Congratulations on your purchase of a Goldacres sprayer. For more than a quarter of a century Goldacres has supplied Australian farmers with quality, innovative and technologically advanced spraying solutions - equipment designed in Australia for Australian conditions.

Goldacres not only produce Australia's finest range of spraying equipment - we also keenly value the unique relationship we enjoy with owners of our equipment. We are pleased to welcome you as a Goldacres owner and look forward to making your spray applications as efficient as possible.

Please use this comprehensive resource to gain a full understanding of your equipment, and don't hesitate to contact your Goldacres Dealer or Goldacres for further information.

A handwritten signature in blue ink, appearing to read 'Roger Richards', with a stylized flourish at the end.

Roger Richards  
General Manager

# Safety

## General

The following pages outline important safety information. At Goldacres safety is a high priority. These safety and warning instructions **MUST** be followed to ensure the safe operation of your Goldacres equipment.

Explanation of key terms used in this operator's manual are:

**DANGER** - You will be killed or seriously hurt if you don't follow instructions

**WARNING** - You can be seriously hurt if you don't follow instructions

**CAUTION** - You can be hurt if you don't follow instructions

**NOTE** - Is used to notify people of installation, operation or maintenance information that is important but not hazard related.

## The Operator

All operators of this equipment should be adequately trained in the safe operation of this equipment. It is important that all operator's have read and fully understand the operators manual prior to using this equipment.

All new operators should be trained in an area without bystanders or obstructions and become familiar with the sprayer prior to operation.

## Safety Precautions

### WARNINGS

- Never stand within the radius of boom wings.
- Keep clear of overhead obstructions.
- **CRUSH HAZARD** - Keep hands clear of moving parts when carrying out boom fold and unfold sequences.
- Any unauthorised modifications to this equipment may affect its function and create a serious safety risk.
- Never attempt to clean parts or nozzles, by blowing with mouth.
- Never attempt to siphon chemicals, or substances, by sucking.
- It is imperative that the vehicle

manufacturer's specifications be checked and all instructions for use when transporting, or towing, be adhered to at all times.

- Care should be taken when transferring liquid into the tank to ensure that the gross weight of the equipment does not exceed the carrying, braking and/or towing capacity of the vehicle to which the equipment is attached as specified by the vehicle manufacturer.

**NOTE:** 1 LITRE WATER = 1 KG.

- Water weighs 1kg per litre, however conversion factors must be used when spraying liquids that are heavier or lighter than water. Example: liquid urea has a density of 1.28 kg/L and will therefore be significantly heavier than water if the tank is filled completely.
- Suitable care should be taken when driving with the equipment attached to the vehicle. Consideration should be given to both the carrying capacity of the vehicle and the gradient of the terrain when determining the speed at which the vehicle can be driven safely.
- Ensure that the maximum speed of the vehicle, when loaded, is within the vehicle manufacturers limitations.
- Ensure equipment is securely fastened, or attached to the vehicle at all times.
- Regularly check the pump mounting bolts. The pump will always vibrate to some degree when operating, and this may work the bolts loose.

### CAUTIONS

- Always ensure that there is adequate room for the boom to open.
- Always ensure that the boom is adequately supported when transporting.
- A supply of fresh water should be with the equipment at all times.
- Standard polyethylene tanks are not designed for use with diesel fuel or any flammable liquid.
- Do not use this machine in ambient temperatures exceeding 40 degrees Celsius.

*Continued over page*



- Ensure that all bolts are tightened and secured before operation.
- Where fitted, always ensure that the boom is securely supported when travelling.
- Area surrounding equipment may become slippery when wet.

## NOTES

- Always read and understand the operator's manual prior to operation of this equipment.
- It is the responsibility of the operator to ensure that there are no decals missing from the equipment and that any damaged or missing decals are replaced prior to operation.
- Goldacres equipment ordered or operated, outside the guideline limitations may not be warranted by Goldacres for successful performance. Operators working outside these limitations do so at their own risk, unless specific advice has been sought from and provided by Goldacres in writing.
- Always read and follow the chemical manufacturer's guidelines for safe application as per the chemical label. Particular attention should be given to the recommended target application rate of the chemical being applied as per the chemical label.
- Inspect the equipment thoroughly for damage and wear before operation.
- Flush chemicals from equipment immediately after use.
- Certain chemicals may be unsuitable for use with Goldacres standard plumbing designs. Consult your Goldacres dealer if in doubt.
- Do not operate the equipment while under the influence of any drugs, alcohol or if excessively tired.
- Make sure that the equipment complies with all relevant road regulations when transporting.
- When draining fluids from the equipment use appropriate, leak proof containers. Do not use food or beverage containers as someone may consume the contents by mistake.

- After reading the operator's manual if there is any thing that you do not understand please contact your Goldacres dealer.

## Safe Chemical Use

The safe use of Ag chemicals with this equipment is the responsibility of the owner/operators. All operators should be trained in the safe use of Ag chemicals. Goldacres suggest that a relevant course is completed by owners/operators prior to operation of this equipment as a spray unit.

## Personal Protective Equipment (PPE)

Always wear close fitting clothing and safety equipment designed for the job.

Chemicals can be harmful to humans, appropriate PPE should be used when handling chemicals.

Always refer to the chemical manufacturers label for guidelines on the appropriate PPE to use with the chemicals you are using.

Goldacres also suggest that you read and understand the following Australian standards:

- Australian Standard for Chemical protective clothing AS3765
- Australian Standard for Respiratory protection devices AS1715

## Airborne particles

Always stand well clear of equipment during operation. Any spray drift is dangerous and may be hazardous to humans and animals.

## Fluids under pressure

Do not disconnect any hoses, nozzles or filters while equipment is operating. Disconnecting these components while under pressure may result in uncontrolled fluid discharge which may be hazardous.

When the repair is complete ensure that all fittings and lines are secured before re-applying pressure.

## Cuts, Stabs & Punctures

When Servicing machine, be mindful of sharp edges on parts such as trimmed cable ties, hose clamps, cut reinforced hose and the edges of plates and brackets as they could cause cut, stab or puncture injuries.

*Continued over page*

# Safety Decals

Understanding safety decals and their purpose assists in the safe operation of your sprayer. Safety decals are there for your protection and it is the responsibility of the owner operator to replace damaged and/or missing safety decals.

Regularly review safety decals with operators. It is very important to ensure that all new machine components and replacement parts include current hazard identification decals.

Replacement safety decals can be ordered from all Goldacres dealers.



GA8700436 Manual Fold Decal Kit

# Warranty

## How to make a warranty claim

In the event of a fault or breakdown with your product, that you believe to be a warranty issue, the following steps must be taken.

1. Ensure that you have read the Operator's Manual and gone through the troubleshooting procedure.
2. If you continue to experience problems then please contact your local authorised Goldacres dealer. They will advise the method of warranty service for your product.

## Warranty Duration

Goldacres' standard warranty is 12 months from date of purchase.

## Warranty Inclusions

- Chassis
- Steel Boom Components
- Tanks
- Electrical wire and connectors, (non-contaminated)
- Consoles and controllers
- Electrical motors and drivers
- Wheels, tyres and rims
- Pins and bushes\*
- Pump housing
- Hydraulics
- Axle frame only
- Shockers and dampeners
- Wire cables
- Springs
- Drive chains\*
- Wheel bearings\*

\*Failure caused by lack of lubrication not covered.

## Warranty Exclusions

- Pump diaphragms
- Pump Seals
- Pump check valves
- Pump O-rings

- Filters and filter screens
- Filter O-rings
- Chemical Hoses
- Solenoid Diaphragms
- Hand Gun, lance or wand seals and O-rings
- Consumables, chemicals, fuels
- Items controlled by or fitted to Non Genuine parts or devices
- Contamination or corrosion of components
- Hose reel seal sand O-rings
- Pressurised sprayer seals and O-rings
- Belts, couplings
- Adjustment of components
- Brake pads and components
- Globes / Bulbs
- Fuses
- Oil / fluids / filters (Unless contaminated or lost due to a warrantable failure)
- Boom break away tips
- Boom break away hinges
- Boom protectors
- Nozzles
- Nozzle Bodies
- Nozzle Body Brackets
- Nozzle Diaphragms and seals
- Wiper Blades
- Skid plates
- Wear plates
- Damaged items
- Worn or wearing items

# Goldacres Warranty Statement

This warranty is the only warranty applicable to Goldacres new products (Products) and to the maximum extent as permitted by law, is expressly in lieu of any other conditions or warranties expressed or implied in relation to the Product.

In Australia, Goldacres Products come with guarantees that cannot be excluded under the Australian Consumer Law. You are entitled to a replacement or refund for a major failure and compensation for any other reasonably foreseeable loss or damage. You are also entitled to have the goods repaired or replaced if the goods fail to be of acceptable quality and the failure does not amount to a major failure.

This Warranty gives you additional protection for your Goldacres product and identifies a preferred approach to resolving warranty claims which will be the quickest and simplest for all parties subject to the exclusions, terms and conditions below.

Goldacres warrants its authorized Dealers who in turn warrants the original purchaser (Owner) that each new Goldacres Product will be free from proven defect in materials and workmanship for twelve (12) months from the date of delivery to the first owner according to conditions outlined herein.

Subject only to legislative obligations to the contrary, Goldacres shall not be liable for incidental or consequential damage resulting from ownership or use of a Product.

Goldacres does not authorize any person to create for it any other obligation or liability in connection with these products.

The repair of the defective Product qualifying under this warranty will be performed without charge for labour and parts by any authorized Goldacres service outlet within a reasonable time following the delivery of the Product, at the cost of the owner, to the service outlet / place of business advised

Goldacres in its absolute discretion may choose to pay the cost of replacement or repair of the product.

If the Product will be repaired or replaced, using parts as supplied by Goldacres, repair may include, at Goldacres discretion, the replacement of parts with functionally equivalent remanufactured, reconditioned or new parts.

Goldacres may request failed parts to be returned to the factory.

## Conditions of Warranty Coverage

The warranty covers only conditions resulting directly from defects in workmanship or materials used under normal use and service conditions.

The Warranty is not transferable.

The owner is responsible for the performance of regular maintenance and service as specified in the owner's / operators manual applicable to the product. Failure to follow regular maintenance as advised may

invalidate the warranty.

The owner must provide the Goldacres Dealer with prompt written notice of the defect (within 14 days of it occurring) and allow reasonable time for repair and/or replacement.

## Goldacres warranty cover excludes:

- Claims resulting from misuse, use of incompatible chemical or fluids, exceeding the Product's specifications including overloading, impact damage, negligence, accidental damage or failure to perform recommended service or service intervals or use the Product with good care.
- Failure due to faulty or inadequate electrical sources of power. 12 volt power sources must be checked for suitability to operate the product.
- The time taken to remove and re-install warranted parts, products or components fitted to other than Goldacres brand products will not be covered by Goldacres Warranty. Only labour and parts directly attributable to the repair of the Goldacres unit is covered.
- The cleaning of parts or products before or after the warranty repair. Cleaning time is considered a customer expense.
- Any Goldacres Product which has been repaired by other than an authorized Goldacres dealer in a way which, in the sole and absolute judgment of Goldacres, adversely affects its performance or reliability.
- The replacement of maintenance items such as diaphragms, batteries, belts, etc.
- Loss of time, inconvenience, loss of use of the product, liability to third parties or any other consequential damages including damage to crops, profits or revenue, other commercial losses inconvenience or cost of rental or replacement equipment.
- Incidental costs associated with a warranty repair including any travel costs, out of hours labour charges, transportation costs, freight costs or any communications costs.
- Goldacres products purchased at auction or in used condition.

Procedure for claiming:

Claims must be made through a Goldacres Dealer. To make a claim under this Warranty, you should

- Contact your local Goldacres Dealer,
- Phone 1300 301 853 to locate a Goldacres Dealer.

Owners returning products to a Goldacres Dealer will require the original Dealer tax invoice, a copy of the tax invoice or delivery docket and any instruction manuals, information booklets or guides that were shipped with the Product.

# Terms & Conditions

## Interpretation

1. In terms and conditions:
  - (1) "Goldacres" means Goldacres Trading Pty. Ltd. A.C.N. 061 306 732 trading as Goldacres Agricultural Equipment (its successors and assigns) which is the seller of the Goods;
  - (2) "Purchaser" means the purchaser of the Goods;
  - (3) "Goods" means the products and, if any, the services sold or provided by Goldacres to the Purchaser;
  - (4) "GST Act" and "GST" are given the meanings referred to in a New Tax System (Goods and Services Tax) Act 1999.
  - (5) "PPSA" means the Personal Property Securities Act 2009 (Cth) (as amended);
  - (6) Nothing in these terms and conditions shall be read or applied so as to exclude, restrict or modify or have the effect of excluding, restricting or modifying, any condition, warranty, guarantee, right or remedy implied by law (including the Competition and Consumer Act 2010) and which by law cannot be excluded, restricted or modified.

## General

2. (1) The Goods and all other products or services provided by Goldacres are provided subject to these terms and conditions. These terms and conditions and any terms and conditions incorporated herein by virtue of clause 3 hereto shall prevail over all other terms and conditions of the Purchaser or otherwise to the extent of any inconsistency.

- (2) These terms and conditions may not be modified or amended without the expressed written consent of Goldacres endorsed by the Managing Director of Goldacres Trading P/L.

## Additional Terms and Conditions

3. From time to time Goldacres may provide additional or extended warranties in respect of certain goods and/or services. Where such additional or extended warranties are provided to a Purchaser in writing they will be incorporated into these terms and conditions provided that in the event of any inconsistency between these terms and conditions and the terms of any additional or extended warranty, the provisions of the additional or extended warranty shall prevail.

## Goldacres quotations.

4. Unless previously withdrawn, Goldacres quotations are open for acceptance within the period stated therein or, when no period is stated, with 14 days only of the quotation date. Goldacres reserves the right to refuse any order based on any quotation within 7 days of receipt of the order.

## Packing

5. The cost of any special packing and packing materials used in relation to the Goods shall be at the Purchaser's expense notwithstanding that such cost may have been omitted from any quotation.

## Shortage

6. The Purchaser waives any claim for shortage of any Goods delivered if a claim in respect thereof has not been lodged with Goldacres within (7) seven days from the date of receipt of the Goods by the Purchaser.

## Specifications, etc. Catalogues, etc. Quantities

7. All specifications, (including but not limited to: drawings, particulars of weights, volumes, capacities, dimensions, load factors) are approximate only and any deviation shall not be taken to vitiate any contract with Goldacres or form any claim against Goldacres. The descriptions, illustrations, and performances contained in catalogues, price lists and other advertising matter do not form part of the contract of sale of the Goods. Where specifications, drawings or other particulars are supplied by the Purchaser, Goldacres' price is made on estimates of quantities required. Should there be any adjustments in quantities above or below the quantities estimated by Goldacres and set out in a quotation, then any such increase or decrease shall be adjusted on a unit rate basis according to unit prices set out in the quotation.

## Performance, Capacities, Chemicals, Liquids, Application Methods, Environmental Effects

8. Any performance, volumes, and/or capacity figures given by Goldacres are estimates only. Goldacres shall be under no liability for damages for failure to obtain such figures unless specifically guaranteed in writing and any such written guarantee shall be subject to the recognised tolerances applicable to such figures. The suitability of chemicals and other liquids for any application and the application methods and the environmental effects shall be the sole decision and responsibility of the Purchaser and the user of the Goods. Goldacres gives no warranty as to the suitability of any chemicals or other liquids for any application, nor the application methods nor the environmental effects, which may result from the use of the Goods. Goldacres shall be under no liability for damages arising out of the use of any chemicals, liquids, or mixtures in the Goods nor for any application, nor for the application methods nor for the environmental effects, which may result from the use of the Goods.

## Delivery/Service Times

9. The delivery times and service times made known to the Purchaser are estimates only and Goldacres shall not be liable for late delivery, non-delivery or delay and under no circumstances shall Goldacres be liable for any loss, damage or delay occasioned by the Purchaser or its customers arising from the late or non-delivery or late installation of the Goods.

## Loss or damage in transit

10. Goldacres is not responsible for any loss or damage to Goods in transit. Goldacres shall render the Purchaser such assistance as may be necessary to press claims on carriers provided that the Purchaser shall have notified Goldacres and the carriers immediately the loss or damage is discovered on receipt of Goods and shall lodge a claim on the carrier within three days of the date of receipt of the Goods. Insurance of Goods in transit is the responsibility of the Purchaser.

## Limit of Liability

11. (1) Goldacres liability for Goods manufactured by it is limited to:
  - (a) where the law implies consumer guarantees into these terms and conditions pursuant to Part 3.2 Division 1 of Schedule 2 to the Competition and Consumer Act 2010 (Cth) ("consumer guarantees") which cannot be excluded and Goldacres breaches a consumer guarantee, the loss and damage the Purchaser is entitled to at law which cannot be excluded by these terms and conditions;

and, in all other cases

- (b) making good any defects by repairing the same or at Goldacres option by replacement within a period not exceeding either 1000 hours or twelve calendar months, whichever comes first, after the Goods have been dispatched provided that:
  - (i) the defects have arisen solely from faulty materials or workmanship;
  - (ii) the Goods have not received maltreatment, inattention or interference;
  - (iii) accessories of any kind used by the Purchaser are manufactured or approved by Goldacres;
  - (iv) where applicable, the seals on the Goods remain unbroken;
  - (v) there has been no improper adjustment, calibration or operation;
  - (vi) the use of accessories including consumables, hardware or software (not manufactured by Goldacres) has been approved in writing by Goldacres;
  - (vii) no contamination or leakage has been caused or induced;
  - (viii) any modification to the Goods have been authorised in writing by Goldacres;
  - (ix) there has been no inadequate or incorrect use, storage, handling or application of the Goods;
  - (x) there has been no use or operation of the Goods outside of the physical, electrical or environmental specifications of the Goods;
  - (xi) there has been no inadequate or incorrect site preparations;
  - (xii) there has been no inadequate or improper maintenance of the Goods;
  - (xiii) it has not been caused by fair wear and tear; and
  - (xiv) firstly the Goods have been thoroughly inspected and any damage (from whatever cause) to the Goods (and in particular – the structure, welding, seams, bolts, booms) has been repaired prior to the Goods being operated, used driven or moved and on each occasion the tanks are filled; and
  - (xv) there has been no failure to comply with the requirements of all present or future laws or regulations relating to the Goods and/or the use and/or the operation of the Goods; and there has been no failure to maintain a record of hours of operation (which record shall contain full details of all inspections, repairs and maintenance) and produce same to Goldacres at the time of the claim;
  - (xvii) the defective Goods or any damaged part of the Goods are promptly returned free of cost to Goldacres or a representative of Goldacres;
  - (xviii) all warranty related repairs have been carried out with the prior authorisation of Goldacres;
  - (2) If Goods or any part thereof are not manufactured by Goldacres, in particular engines, engine accessories, transmissions, transfer cases, differentials, tyres, tubes, batteries, radios and UHF's, the guarantee of the manufacturer thereof shall be accepted by the Purchaser and is the only guarantee given to the Purchaser in respect of the Goods or that part provided always that this clause does not seek to exclude the consumer guarantees;
  - (3) In the case of hydraulic systems, Goldacres shall replace defective parts in accordance with clause 11(i) of these conditions, provided that the failure of the part was not related to contamination within the system, Goldacres shall not be liable for labour in the case of repairing hydraulic system defects;
  - (4) Goldacres will not accept liability for damage attributed to fair wear and tear including but not limited to fair wear and tear to nozzles, chains, belts, filters, brake pads, polyethylene bushes and liquid pump valves, valve O-rings, diaphragms and seals;
  - (5) Goldacres shall not be liable for and the Purchaser releases Goldacres from any claims in respect of faulty or defective design of any Goods supplied unless such a design has been wholly prepared by Goldacres and the responsibility for any claim has been specifically accepted by Goldacres in writing and in any event Goldacres liability hereunder shall be strictly limited to the replacement of defective parts in accordance with paragraph 11(i) of these conditions provided always that this clause does not seek to exclude the consumer guarantees;
  - (6) Except as provided herein, all express and implied warranties, guarantees and conditions under statute or general law as to the merchantability, description, quality, suitability or fitness of the Goods for any purpose or as to design, assembly, installation, materials or workmanship or otherwise are hereby expressly excluded and Goldacres shall not be liable for physical or financial injury, loss or damage or for consequential loss or damage of any kind arising out of the supply, layout, assembly, installation or operation of the Goods or arising out of Goldacres negligence or in any other way whatsoever;
  - (7) The benefit of any warranty provided under these terms and conditions shall only be available to the Purchaser and shall not be transferable by the Purchaser;
  - (8) The warranties provided under these terms and conditions do not extend to second hand or used Goods that may be sold by Goldacres.
  12. Goldacres liability for breach of a consumer guarantee is hereby limited (in the case of goods and services not used for personal, domestic or household purposes) to:
    - (1) in the case of Goods, any one or more of the following:
      - (a) the replacement of the Goods or the supply of equivalent Goods;
      - (b) the repair of the Goods;
      - (c) the payment of the cost of replacing the Goods or acquiring the equivalent Goods;
      - (d) the payment of having the Goods repaired; or
    - (2) in the case of services;
      - (a) the supplying of the services again; or
      - (b) the payment of the cost of having the services supplied again.

## Prices

13. (1) Unless otherwise stated in writing by Goldacres, all prices quoted by Goldacres are inclusive of GST for supplies within Australia and exclusive of GST for exports outside of Australia. Prices quoted are those ruling at the time of quotation or the date the price is given and are based on rates of freight, insurance, customs, duties, taxes, exchange, shipping expenses, sorting and stacking charges, cartage, cost of materials and other charges affecting the cost of production ruling on that date and any alterations thereto either before acceptance of or during currency of the contract shall be to the Purchaser's account.
- (2) For the purpose of 38-185 of the GST Act, the day upon which the seller gives the invoice for the supply shall be the date of the invoice.

## Payment

14. (1) The purchase price in relation to the Goods and the cost of the service to be payable without deduction and or set off and payment thereof shall be made on or before the

- thirteenth day of the month following the delivery of the Goods or performance of the services unless other terms of payment are expressly stated in writing.
- (2) A decreasing or increasing adjustment and or the issuing of an adjustment note, pursuant to Division 21 and Division 29-C of the GST Act, shall not, in any way, constitute a release, waiver, and or forgiveness of the debt incurred by the Purchaser.

#### Interest on overdue payments

15. If Goldacres is not paid for any Goods or services on the due date specified in this agreement without prejudice to any other right or remedy, all outstanding money shall bear interest at the rate set, pursuant to the Penalty Interest Rates Act, Victoria, 1986, as such money, together with interest shall be recoverable forthwith from the Purchaser.

#### Rights in relation to Goods.

16. (1) At all times until the Debts have been paid in full the Purchaser shall be responsible for any loss or damage occasioned to the supplied Goods howsoever occasioned on a strict liability basis and shall indemnify Goldacres against any such loss or damage and shall insure and keep insured the Goods in the name of both the purchaser and Goldacres against such loss or damage to the full extent of the purchase price and shall provide a copy of such Insurance Policy to Goldacres.
- (2) The Purchaser shall have the right to resell Goods but only as fiduciary agent and trustee for Goldacres by way of bona fide sale at full market value and in the ordinary course of its business.
- (3) Until all the Debts have been paid in full:
- (a) the Purchaser shall take custody of the Goods as trustee, fiduciary agent and bailee for Goldacres;
- (b) the Purchaser shall keep the Goods separate from any other goods and properly marked, stored, protected and insured;
- (c) the Purchaser must hold all of the money it receives ("Proceeds");
- (d) from the sale of any property into which Goods supplied have been incorporated; and
- (e) from the sale of Goods or provision of services including the Goods supplied by the Goldacres as bailee, fiduciary agent and trustee for Goldacres, but the Purchaser need not hold on trust any money exceeding the amount of the Debts at the time the money is received.
- (d) The Purchaser expressly acknowledges that it is bound by the fiduciary obligation created in the preceding paragraph and acknowledges that:
- (i) it must hold the Proceeds on trust for Goldacres;
- (ii) it must place the whole of the Proceeds in an account separate from its own moneys (the "Proceeds Account");
- (iii) it must maintain the Proceeds Account separate from its own moneys at all times.
- (iv) it must maintain proper records for the Proceeds Account.
- (v) it must not assign or encumber any book debts arising from sales made in circumstances set out in clauses 16(c)(i) and (ii) or do any other act in derogation of Goldacres' legal or beneficial interests; and
- (vi) it must account to Goldacres on demand for all moneys standing to the credit of such account.
- (e) For the purposes of identification of different consignments of Goods purchased from Goldacres and receipt of Proceeds, the Purchaser agrees that the principle of "Last In, First Out" shall be applied to any items that cannot be distinguished.
- (f) Goldacres may trace the Proceeds in equity.
- (4) Goldacres may at any time, without notice to the Purchaser and without prejudice to any other rights which it may have against the Purchaser, terminate any contract connected with the Goods and the bailment referred to in clause 16(3) and enter upon any premises owned or occupied by the Purchaser where Goldacres reasonably believes the Goods may be stored, and repossess the Goods without liability for any damaged caused, and subsequently dispose of the Goods at Goldacres' discretion if:
- (a) the Debts are not paid in accordance with these terms and conditions or any other contract or arrangement between Goldacres and the Purchaser, or
- (b) Goldacres receives notice of or reasonably believes that:
- (i) a third person may attempt to levy execution against the Goods; or
- (ii) the Purchaser is insolvent (within the meaning of the Corporations Act 2001) or bankrupt; or
- (iii) the Purchaser has entered into any arrangement or composition with its creditors, gone into liquidation, or has appointed a receiver, a receiver and manager or administrator.
- (5) If after repossession under clause 16(4) Goldacres sells the Goods, Goldacres shall account to the Purchaser for any proceeds of sale (less expenses of repossession and sale) that exceeds the amount of the outstanding Debts.
- (6) If any Goods belonging to Goldacres are disposed of by the Purchaser or an insurance claim is made in respect of them, Goldacres shall be entitled to trace the sale or insurance proceeds, which proceeds shall be held by the Purchaser in a separate bank account on trust for Goldacres.
- (7) The Purchaser agrees and acknowledges that in the event it sells Goods to a third party on account, it will include in its terms and conditions of sale a provision under which the Purchaser retains title to the Goods until such time that the total amount due in respect of the Goods and all monies owing to the Purchaser have been paid in full by that third party debtor. The Purchaser also agrees and acknowledges that in these instances, it will register its PMSI in accordance with the PPSA in respect of its security interest in the Goods.

#### PPSA provisions

17. (1) The Purchaser acknowledges that these terms and conditions constitute a security agreement for the purposes of section 20 of the PPSA and that a security interest exists in all Goods (and any associated Proceeds from their sale) previously supplied by Goldacres to the Purchaser (if any) and in all future Goods (and any associated Proceeds from their sale) that may be supplied to the Purchaser by Goldacres.
- (2) The Purchaser acknowledges that Goldacres has a first ranking purchase money security interest ("PMSI") (as defined in section 14 of the PPSA) in the Goods and the Purchaser must not jeopardise such ranking (whether by act or omission).
- (3) The Purchaser acknowledges that it has received value as at the date of first delivery of the Goods and has not agreed to postpone the time for attachment of the security interest (as defined in the PPSA) granted to Goldacres under these terms and conditions.
- (4) The Purchaser will execute documents and do such further acts as may be required by Goldacres to register the security interest granted to Goldacres under these terms and conditions under the PPSA.

- (5) Until ownership of the Goods passes, the Purchaser must not give to Goldacres a written demand or allow any other person to give Goldacres a written demand requiring Goldacres to register a financing change statement under the PPSA in respect of Goldacres' interest in the Goods.
- (6) The Purchaser must indemnify Goldacres and on demand reimburse Goldacres for all costs and expenses incurred by Goldacres in respect of these terms and conditions including but not limited to Goldacres registering its security interest in the Goods, lodging, discharging or amending any financing statement or financing change statement, or otherwise complying with the PPSA.
- (7) The Purchaser agrees (other than as provided in these terms and conditions) not to sell, lease, mortgage, deal with, dispose of or create or attempt to create any other security interest in or affecting the Goods unless and until the Purchaser's Debts have been satisfied.
- (8) The Purchaser waives its rights under the following provisions of Chapter 4 of the PPSA:
- (a) to receive a notice on enforcement action against liquid assets (section 121(4)),
- (b) to receive a notice to seize collateral (section 123);
- (c) to receive a notice of disposal of Goods by Goldacres purchasing the Goods (section 129);
- (d) to receive a notice to dispose of Goods (section 130);
- (e) to receive a statement of account following disposal of Goods (section 132(2));
- (f) to receive a statement of account if no disposal of Goods for each 6 month period (section 132(4));
- (g) to receive notice of any proposal of Goldacres to retain Goods (section 135(2));
- (h) to object to any proposal of Goldacres to either retain or dispose of Goods (section 137(2));
- (i) to redeem the Goods (section 142);
- (j) to reinstate the security agreement (section 143);
- (k) to receive a notice of any verification statement (section 157(1) and section 157(3));
- (9) The rights Goldacres may have under the PPSA are supplementary and in addition to those set out in these terms and conditions and do not derogate from the rights and remedies of Goldacres under these terms and conditions or under any other statute or under general law.
- (10) The Purchaser must give 10 business days prior written notice of any proposed change in the Purchaser's name or other identifying characteristics and details.

#### Purchasers property

18. Any property of the Purchaser under Goldacres's custody or control shall be entirely at the Purchaser's risk as regards loss or damage caused to the property or by it.

#### Storage

19. Goldacres reserves the right to make a reasonable charge for storage if delivery instructions are not provided by the Purchaser within (14) fourteen days of a request by Goldacres for such information.

#### Returned Goods

20. Goldacres shall not be under any obligation to accept Goods returned by the Purchaser and will do so only on terms to be agreed in writing in each individual case.

#### Goods sold

21. All Goods to be supplied by Goldacres shall be described on the purchase order agreed by Goldacres and the Purchaser and the description on such purchase order modified as so agreed shall prevail over other descriptions including any Purchaser's specification or enquiry.

#### Cancellation

22. No order may be cancelled except with the consent in writing and on terms, which will indemnify Goldacres against all losses.

#### No waiver

23. The failure of any party to enforce the provisions of these terms and conditions or to exercise any rights expressed in these terms and conditions shall not be a waiver of such provisions or rights and shall not affect the enforcement of this agreement. The exercise by any party of any of its rights expressed in this agreement shall not preclude or prejudice such party from exercising the same or any other rights it may have irrespective of any previous action taken by that party.

#### Force Majeure

24. If by reason of any fact, circumstance, matter or thing beyond the reasonable control of Goldacres is unable to perform in whole or in part any obligation under these terms and conditions then Goldacres shall be relieved of that obligation under these terms and conditions to the extent and for the period that it is so unable to perform and shall not be liable to the Purchaser in respect of such inability.

#### Passing of risk

25. Risk in the Goods shall pass to the Purchaser upon delivery of the Goods to the Purchaser or collection of the Goods by the Purchaser's agent or carrier as the case may be.

#### Exclusion of liability

26. To the extent permitted by law Goldacres shall not be liable to the Purchaser in contract or in tort arising out of, or in connection with, or relating to, the performance of the Goods or any breach of these conditions or any fact, matter or thing relating to the Goods or error (whether or not it is negligent or a breach of contract) in information supplied to the Purchaser or a user before or after the date of the Purchaser's or user's use of the Goods and Goldacres shall be under no liability for damages arising out of the use of any chemicals, liquids, or mixtures in the Goods, nor for any application, not for the application methods nor for the environmental effects, which may result therefrom or from the use of the Goods.

#### Exclusion of representations and arrangements

27. To the extent permitted by law the terms and conditions supersede and exclude all prior and other discussions, representations (contractual or otherwise) and arrangements relating to the supply of the Goods or any part thereof including, but without limiting the generality of the foregoing, those relating to the performance of the Goods or any part thereof or the results that ought to be expected from using the Goods.

#### Place of contract

28. The contract for sale of the Goods and the provision of the services is made in the State of Victoria and the Purchaser agrees to submit all disputes arising with Goldacres to the courts of such State and any court competent to hear appeals therefrom.

# General Information & Specifications

The Goldacres manual folding boom range are ideal for pasture and cropping operations. Our booms are built using only the finest quality materials to provide strength and durability to give you accurate spray application. Manual folding booms can be fitted to Trailing, three point linkage or tray mounted vehicles and feature non-drip nozzle bodies and compact dimensions ideal for many applications.

## Know Your Sprayer

Getting to know your sprayer prior to operation is crucial in the safe and efficient operation of this equipment. Take the time to familiarise yourself with all the standard and optional components fitted to your sprayer, not only do you need to know where key components are located on your machine you need to become competent in the correct operation of these components prior to spraying operation.

It is also important to become familiar with common spraying methods and common spraying terms prior to using this sprayer for the first time.

## Boom Construction

Goldacres' range of manual folding booms are available in sizes from 3 metres to 12 metres. These booms are constructed from a combination of fully welded steel and aluminium for the best balance of strength and light weight. The steel is shot blasted, primed and then protected by the Goldacres paint process for excellent chemical resistance and durability.

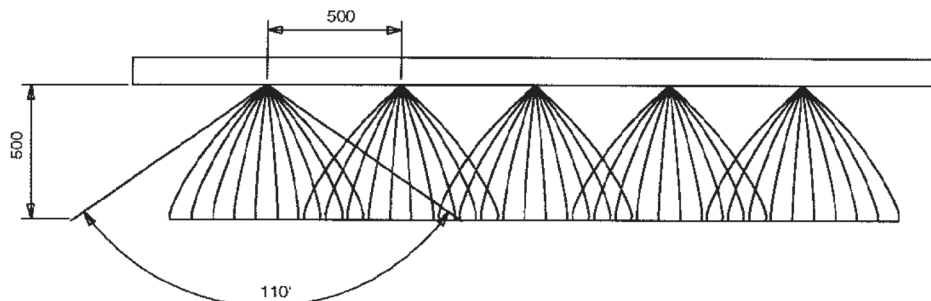
## Paint Colours

Steel work: G13 Dark Green

## Spray Height

The standard boom nozzle spacing is 500mm. For this spacing, the optimum height the boom should be from the object to be sprayed (with a 110° fan angle nozzle) is 500mm.

There will be adequate spray coverage if the nozzles are higher than this but this increases the potential for drift. The spray pattern is affected by many factors not limited to, but including, gravity, pressure, chemical composition and droplet size so the pattern does not extend to the full theoretical coverage. Refer to the TeeJet nozzle selection catalogue for further information on spray application and nozzle technology.



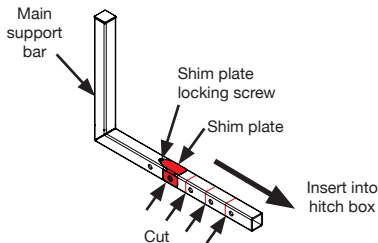
**Above:** Optimal nozzle spacing and spray height with a nozzle fan angle of 110 degrees.



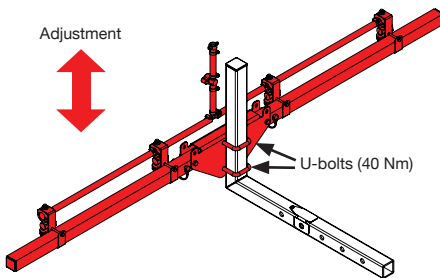
# Boom Fitting & Adjustment Instructions

## Towbar Booms

The towbar booms are supplied in two main parts that must be connected. These consist of the centre section with boom wings and the main support bar.



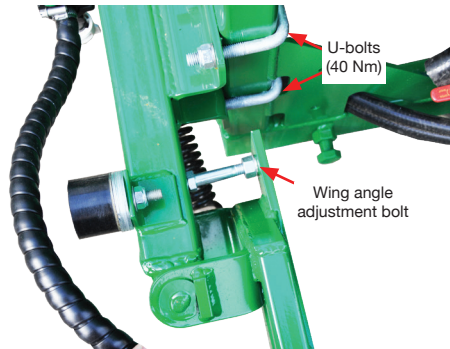
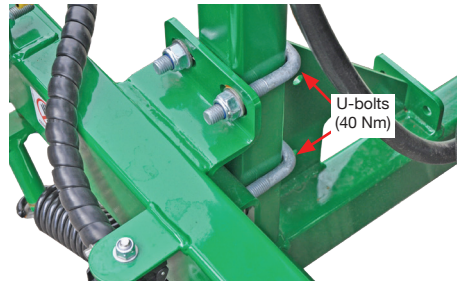
First, insert the main support bar into the towbar hitch box. Cut the towbar insert length shorter if necessary to suit application. Move the shim plates over the hole to be used and fit the self-tapping locking screw. Secure main support bar with your hitch pin.



Next, attach the boom assembly to the main support bar using the supplied u-bolts, nuts and washers. Raise or lower the boom to the desired height and tighten the nuts on the U-bolts. Connect plumbing as necessary to complete installation.

## Crossover Booms

The boom assembly must be connected to the main frame using the supplied u-bolts, nuts and washers.



There are two slots per side in the bracing of the main frame. The u-bolts can be placed through both or just one slot depending on desired boom height. There is some finer degree of adjustment in each position possible represented by the slot length.

With the boom fully open and securely supported on both sides, raise or lower the boom to the desired height and tighten the nuts on the u-bolts against the frame.

Connect plumbing as necessary to complete installation.

Wind the wing adjustment bolt in or out to adjust the angle of the wing when folded out. The booms should be set parallel with each other and the boom centre.

*Continued over page*

## Twin Link Booms

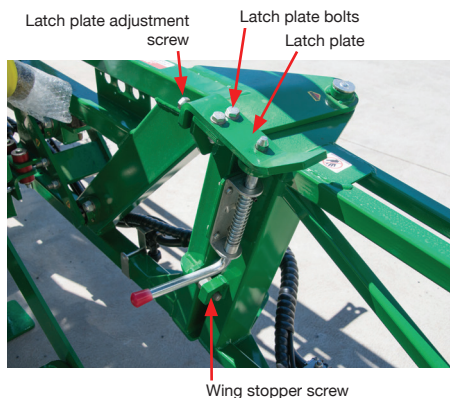
The boom assembly must be connected to the main frame using the supplied clamping plates, bolts, nuts and washers.

With the boom fully open and securely supported on both sides, raise or lower the boom to the desired height against the frame and tighten the nuts and bolts with the clamping plates.

Connect plumbing as necessary to complete installation.



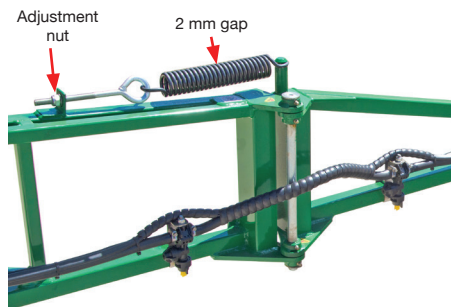
For boom height adjustment, the boom should be fully opened and supported on both sides. Then loosen the nuts on the boom clamping bolts on both sides.



The wing positions should be adjusted so that they are parallel with each other and the centre section.

To make an adjustment, first lock the boom in the open position using the spring latch. Then loosen the two latch plate bolts to allow it to slide while moving the wing.

Depending on the adjustments required, it will also be necessary to change the position of the latch plate adjustment screw and wing stopper screw. The head of the wing stopper screw should be touching the centre section plate while the boom is fully open and tightened in place. Tighten the latch plate adjustment screw in place and then tighten the latch plate bolts last.

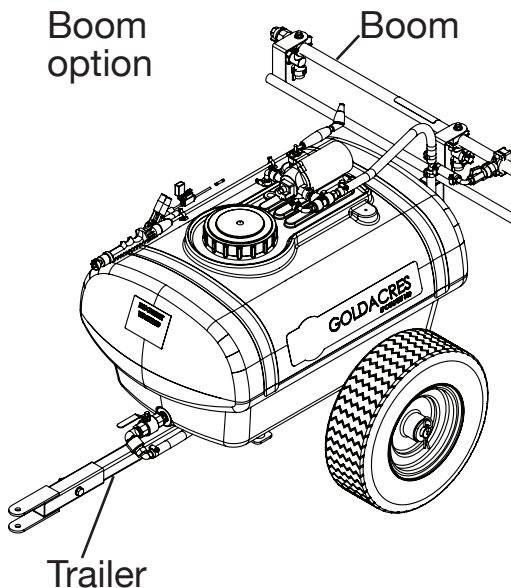


Use the adjustment nut on the eye-bolt to adjust the spring tension. Set it so that there is a 2 mm gap between each coil.

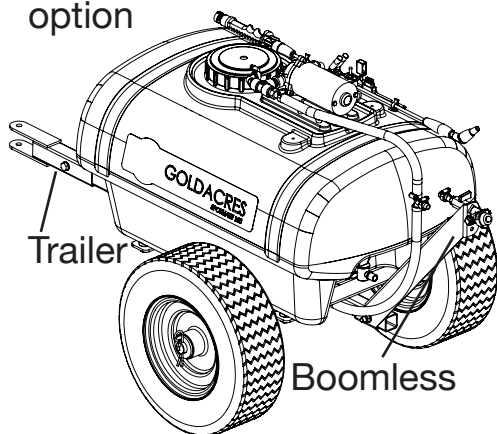
# Upgrade Procedure - Spotmate 100

**How to add a trailer and boom or  
boomless setup**

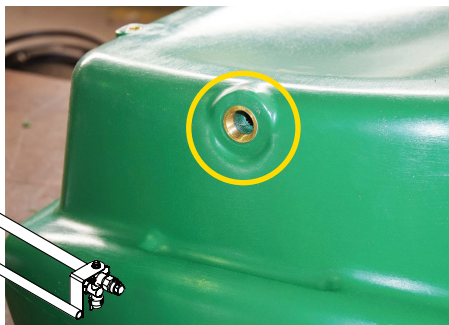
**Boom  
option**



**Boomless  
option**



- 1** Drill out hole in brass insert at front of tank. Careful not to damage brass thread.



- 2** Fit ball valve with sealant provided.



- 3** Bolt on trailer. Do not over tighten bolts.



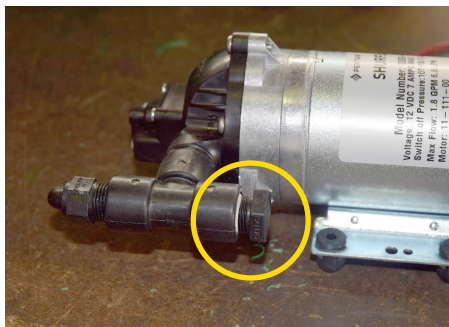
*Continued over page*



- 4 Bolt on boom.



- 7 Remove plug from pump



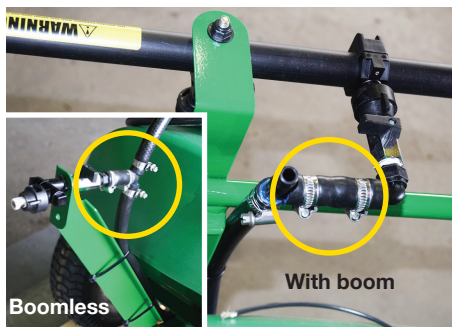
- 5 Fit hose.



- 8 Fit GA5077700 hose barb to pump using sealant.



- 6 Turn sprayer over and fit hose to boom.



- 9 Connect hose from pump to tee piece.



- 10 Fill with water and test operation.

# Booms Folding Procedures

## Compact Booms

1. Starting with the boom in the closed position (Fig.1), pull each wing against the spring in an out and down manner until open and resting against the stop plate with the adjustment bolt.



**Figure 1:** UV400 with 4 metre folding boom closed.

2. With both wings folded out into the open position, (Fig. 2) check that boom is aligned correctly.
3. If not aligned correctly, adjust position with the adjustment bolts as necessary.
4. The 3 metre folding boom folds vertically and the 8 & 10 metre models includes flip over ends that should be folded into the open position prior to operation.



**Figure 2:** 4 metre folding boom open

*Continued over page*

## Twin Link Booms

The Goldacres Twin Link booms incorporate a suspension system that helps to isolate them from tanker roll. This improves stability and boom longevity.

The boom wings can bi-fold for ease of transport and jet bodies are mounted on stainless steel brackets behind the boom for protection.



1. The booms are unfolded one at a time starting from the left hand side. Remove outermost the locking pin first and carefully swing the side boom out.



2. Lock the inner boom hinge into position using the spring loaded latch.



3. Unfold the outer wing all the way until the spring tension holds it open.

4. Repeat steps 1-3 for the right hand side boom.

5. To fold the booms back up, first fold the outer wings in until the spring tension holds them in place. Then, unlock the spring latch of the right hand side boom and insert the locking pin to hold it in the folded position. Lastly, unlock the spring latch of the left hand side boom and insert the locking pin to hold it in the folded position.



# Grease Points

The grease nipple locations are highlighted on the equipment with decals as shown to the right.



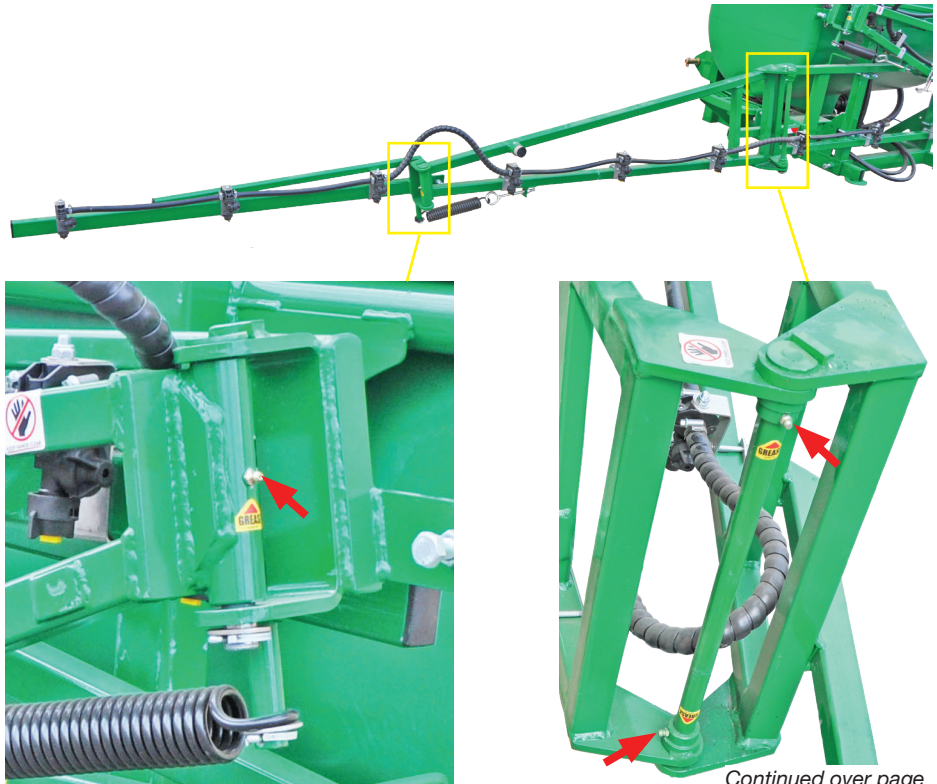
## Compact Booms - Right

Folding booms have a grease nipple fitted at each pivot point for the ease of application. Grease these points regularly with quality multi-purpose grease.



## Crossover & Crossfold Booms - Below

The boom hinging points all have grease nipples located for the ease of application. Grease these points regularly with quality multi-purpose grease.



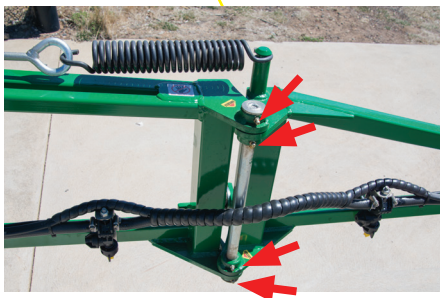
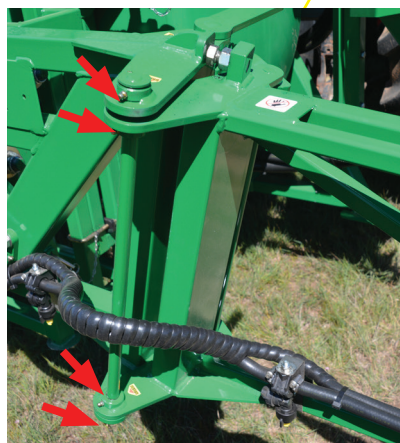
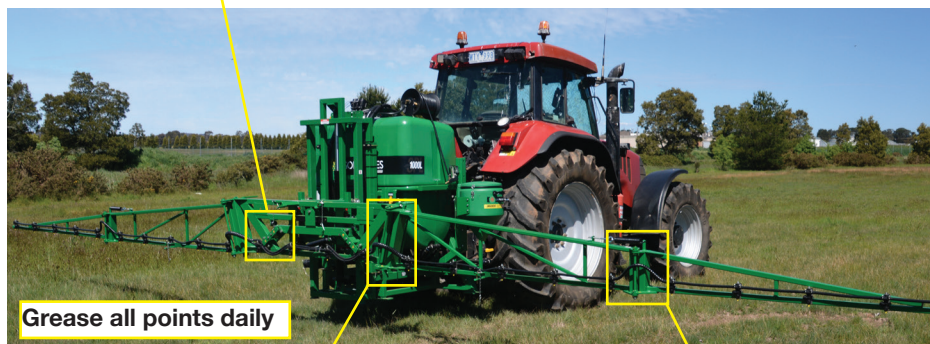
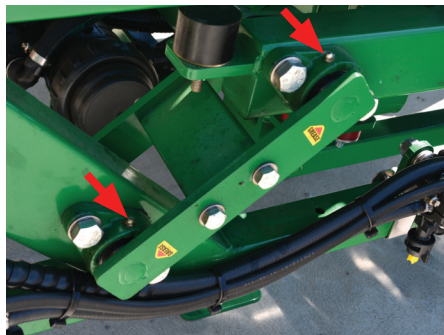
*Continued over page*



### Twin Link Booms - Below

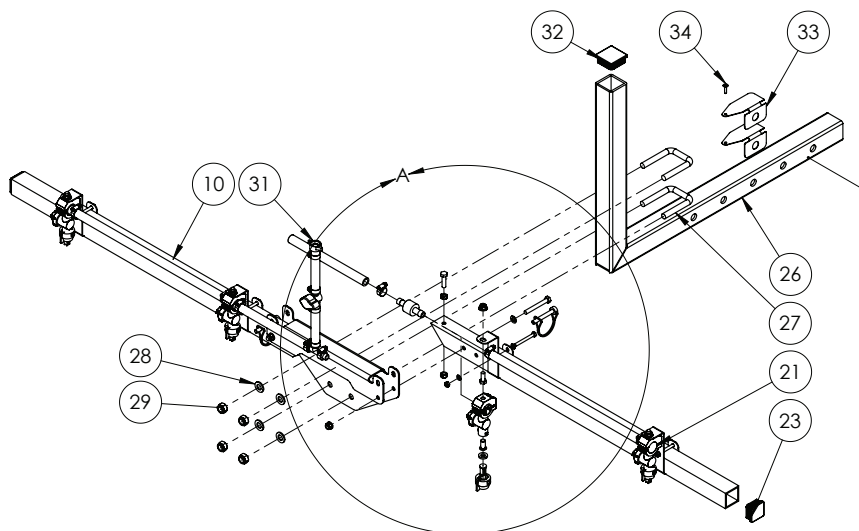
The boom hinging and suspension linkage points all have grease nipples located for the ease of application.

Grease these points daily with quality multi-purpose grease.

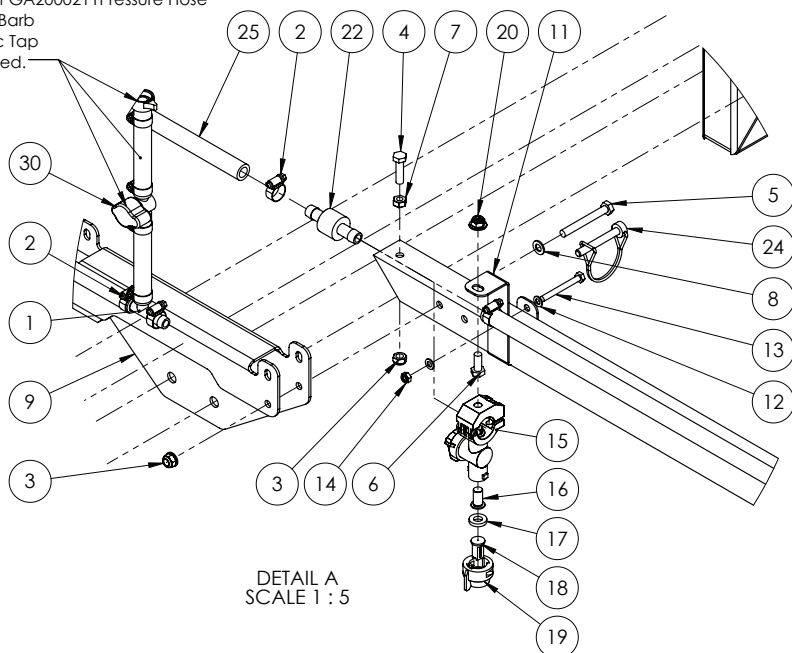


# Towbar Boom Deluxe

GA4914005



Supply 3 Meters of GA2000211 Pressure Hose  
 GA5075655 Hose Barb  
 GA5000681 Plastic Tap  
 loose for boom feed.

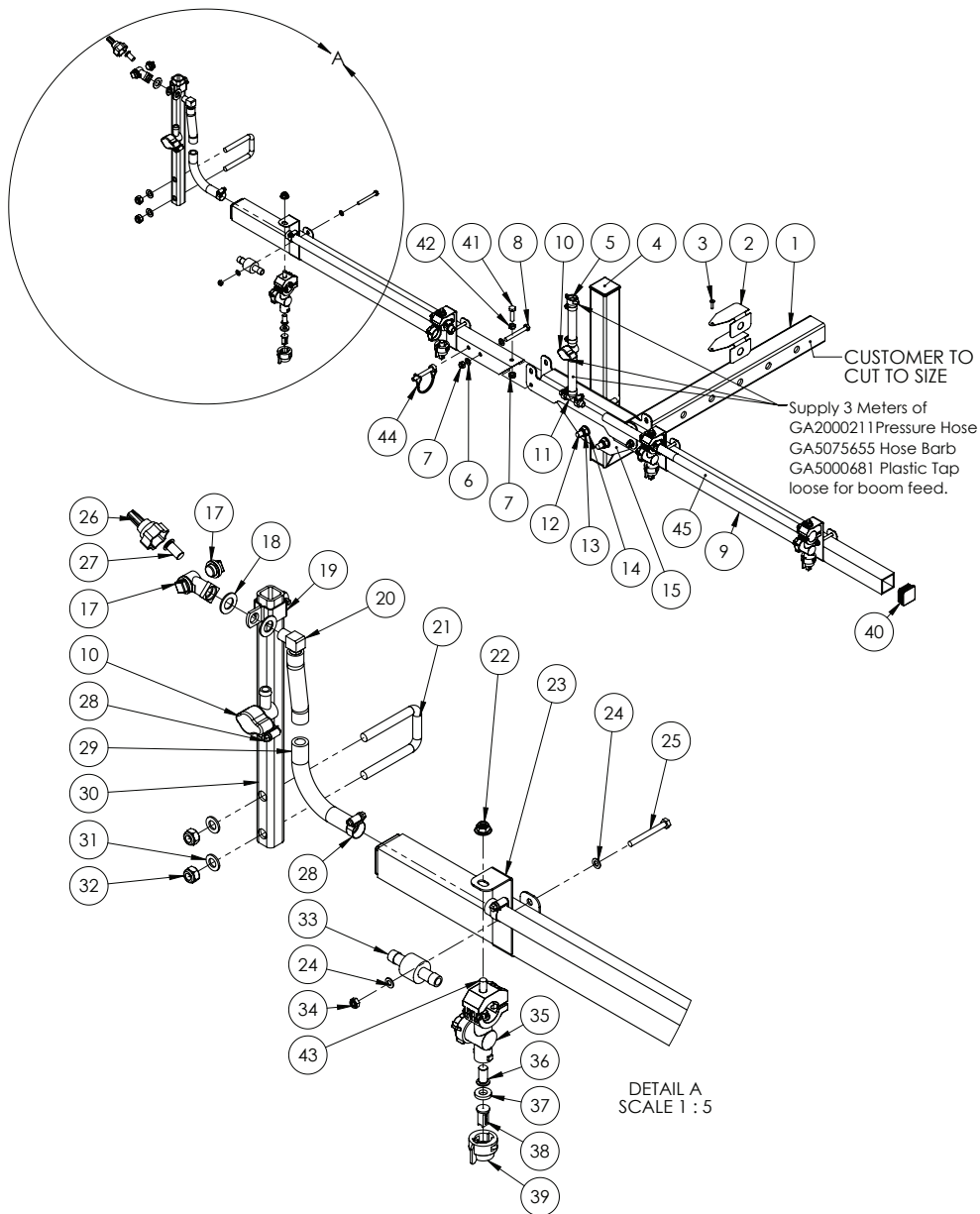


DETAIL A  
 SCALE 1 : 5

Pos.	Part No.	Description	Qty.
1	GA5077751	Tee, Hose barb, 1/2, Banjo, HBT050-050	1
2	GA5000469	Hose clamp, 1/2", SS	12
3	GA5004917	Nut M8 Nyloc ZP	4
4	GA5011475	Bolt M8 x 30 GR8.8 ZP	2
5	GA5052710	Bolt M8 x 65 GR 8.8 ZP	2
6	GA5052595	Bolt M8 x 20 SS A270	4
7	GA5011499	Nut M8 ZP	2
8	GA5003643	Washer 8mm Flat SS HD	4
9	GA4499995	Plate, Boom Centre, Towbar Boom	1
10	GA4675335	RHS AL 40x40x3 Cut 890 RTD	2
11	F70247A	Nozzle bracket to suit 40x40 RHS	4
12	GA5004437	Washer 6mm Flat SS	8
13	GA5004093	Bolt M6 x 55 GR8.8 ZP	4
14	GA5004429	Nut M6 Nyloc SS	4
15	GA5077964	Nozzle body, Single, 3/4, Teejet, QJ17560A-3/4-NYB	4
16	GA5077159	Filter, Nozzle tip, Red, 50 mesh, Polypropylene & SS, Teejet, 8079-PP-50	4
17	GA5055245	Washer, Nozzle Cap Seal, Rubber, 19 OD x 9 ID, Suit Tee Jet	4
18	GA8100020	Nozzle, Replaces CP19438-EPR Nozzle Tip, Air Injector Compact IDK 120-02, Yellow, Polymer, Lechler	4
19	GA8100464	Nozzle cap, Nylon, Black, Teejet, Suit flat spray smaller capacity nozzles (up to 08), CP25611-1-NY	4
20	GA5070710	Nut with flange, Plastic, M8 x 1.25	4
21	GA5077497	Hose barb suit nozzle body, Single 1/2, Nylon, Teejet, CP38936-NYB	2
22	GA5077498	Joiner, Double hose barb, 1/2, CP38937-NYB	2
23	GA5002963	Insert 38x38mm Cap	2
24	GA5013003	Pipe lynch pin, 8 OD x 60 long	2
25	GA2000211	Hose, Pressure, 12mm, Black, 250psi	1
26	GA4403135	Laser Cut AL RHS, Slide in Towbar boom Mount	1
27	GA5011251	U bolt Square top M12 x 52mm x 80mm	2
28	GA5000577	Washer 12mm Flat SS HD	4
29	GA5012461	Nut M12 Nyloc ZP	4
30	GA5000681	13mm plastic tap	1
31	GA5075655	Hose barb, Brass, 13mm hose x fly nut end, ARAG	1
32	GA5003783	50 x 50 square tube insert black	1
33	GA4403140	Plate, 1mm Shim, Towbar Boom	2
34	GA0500055	Screw, Self Drilling, self tapping, 8G x 20mm, Large Wafer Head, Philips, ZP	1

# Towbar Boom Roadside

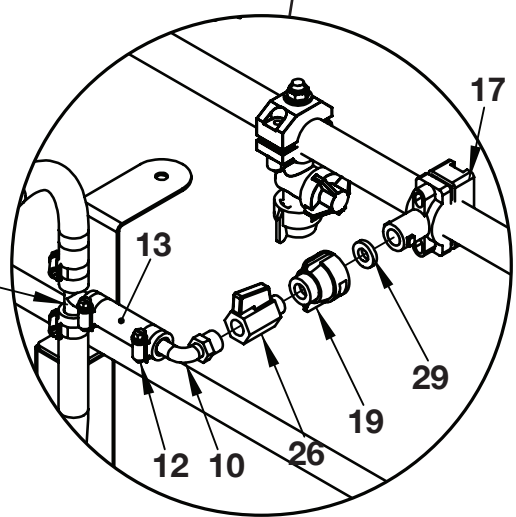
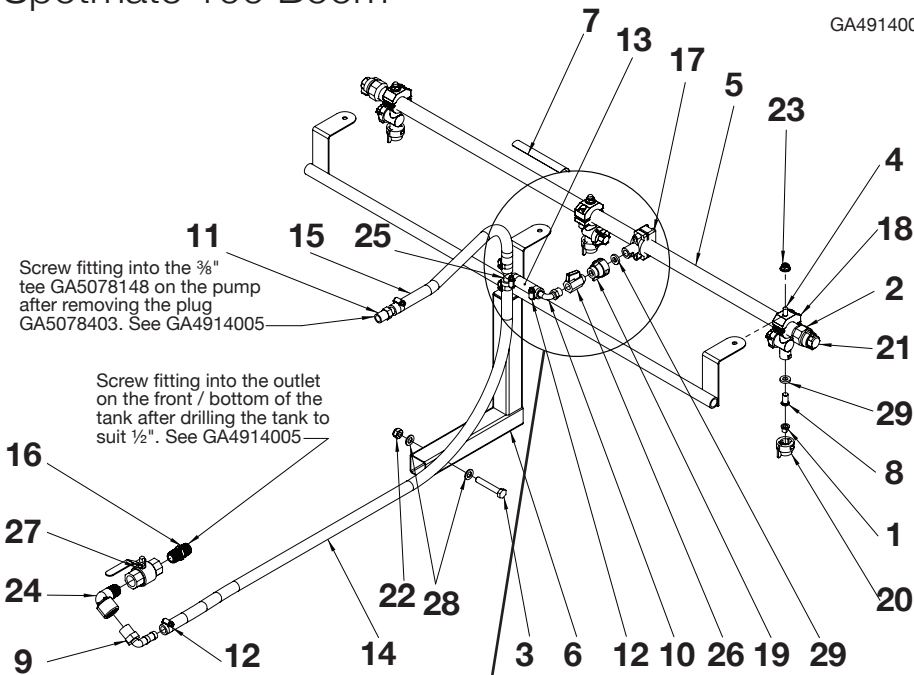
GA4908645



Pos.	Part No.	Description	Qty.
1	GA4403135	Laser Cut AL RHS, Slide in Towbar boom Mount	1
2	GA4403140	Plate, 1mm Shim, Towbar Boom	2
3	GA0500055	Screw, Self Drilling, self tapping, 8G x 20mm, Large Wafer Head, Philips, ZP	1
4	GA5003783	50 x 50 square tube insert black	1
5	GA5075655	Hose barb, Brass, 13mm hose x fly nut end, ARAG	1
6	GA5003643	Washer 8mm Flat SS HD	4
7	GA5004917	Nut M8 Nyloc ZP	4
8	GA5052710	Bolt M8 x 65 GR 8.8 ZP	2
9	GA4675335	RHS AL 40x40x3 Cut 890 RTD	2
10	GA5000681	13mm plastic tap	2
11	GA5077751	Tee, Hose barb, 1/2, Banjo, HBT050-050	1
12	GA5011251	U bolt Square top M12 x 52mm x 80mm	2
13	GA5012461	Nut M12 Nyloc ZP	4
14	GA5000577	Washer 12mm Flat SS HD	4
15	GA4499995	Plate, Boom Centre, Towbar Boom	1
16	GA5077497	Hose barb suit nozzle body, Single 1/2", Nylon	1
17	GA5077992	Nozzle Body, Single, Swivel type, 1/4" female NPT thread	1
18	GA5017641	Washer 1/2 x 1 x 16g Flat SS	2
19	GA5077224	Bracket, Nozzle, Suit dry boom nozzles, 1" RHS, Teejet	1
20	GA5020355	1/4" Male x 1/2" Barb Brass Elbow	1
21	GA5073570	U bolt, Square top, M12 x 40mm x 70mm	1
22	GA5070710	Nut with flange, Plastic, M8 x 1.25	4
23	F70247A	Nozzle bracket to suit 40x40 RHS	4
24	GA5004437	Washer 6mm Flat SS	8
25	GA5004093	Bolt M6 x 55 GR8.8 ZP	4
26	GA8100662	Nozzle, Boomless, x-Tender, 20, Blue, Hypro	1
27	GA5076947	Check valve & filter screen, Nozzle tip, 5psi valve, 50 mesh screen, Teejet	1
28	GA5000469	Hose clamp, 1/2", SS	14
29	GA2000211	Hose, Pressure, 12mm, Black, 250psi, HOS13P	1
30	GA4671475	RHS AL 25x25x3 Cut 340 RTD	1
31	GA5000117	Washer 10mm Flat SS HD	2
32	GA5000141	Nut M10 Nyloc ZP	2
33	GA5077498	Joiner, Double hose barb, 1/2"	3
34	GA5004429	Nut M6 Nyloc SS	4
35	GA5077964	Nozzle body, Single, 3/4"	4
36	GA5077159	Filter, Nozzle tip, Red, 50 mesh, Polypropylene & SS, Teejet, 8079-PP-50	4
37	GA5055245	Washer, Nozzle Cap Seal, Rubber, 19 OD x 9 mm ID	4
38	GA8100020	Nozzle Tip, Air Injector Compact IDK 120-02, Yellow, Polymer, Lechler	4
39	GA8100464	Nozzle cap, Black	4
40	GA5002963	Insert 38x38mm Cap	2
41	GA5011475	Bolt M8 x 30 GR8.8 ZP	2
42	GA5011499	Nut M8 ZP	2
43	GA5052595	Bolt M8 x 20 SS A270	4
44	GA5013003	Pipe lynch pin, 8 OD x 60 mm long	2
45	GA2000211	Hose, Pressure, 12mm, Black, 250psi	1

# Spotmate 100 Boom

GA4914005



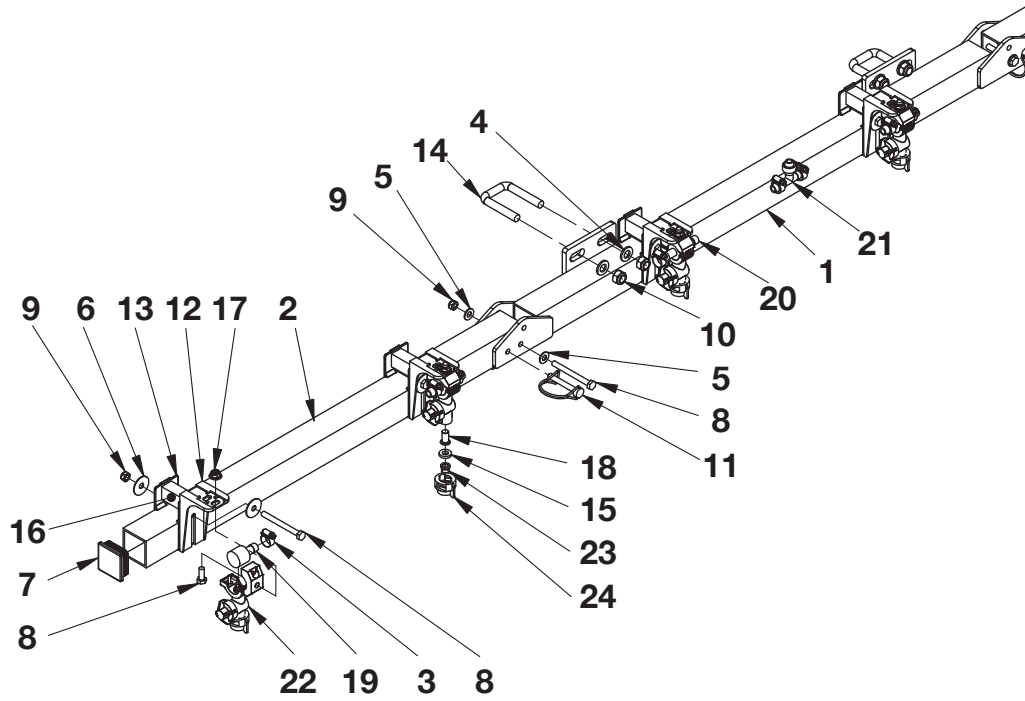
Pos.	Part No.	Description	Qty.
1	GA8100430	AIXR Teejet, Violet 025, Polymer, AIXR110025VP	3
2	GA5076904	Adapter, Boom flush, 3/4" female quick fitting, 400278	2
3	GA5011175	Bolt M10 x 60 GR8.8 ZP	1
4	GA5052595	Bolt M8 x 20 SS A270	3
5	GA5018269	Boom line, Poly, 3/4", 1100 long, No holes	1
6	GA4600110	Boom, Frame, Lawn Mower ST 3 Jet	1
7	GA5063370	Decal, Warning, Nozzles, Chemical	1
8	GA5077159	Filter, Nozzle tip, Red, 50 mesh, Polypropylene & SS, Teejet, 8079-PP-50	3
9	GA5077708	Hose barb, Elbow, 90 degree, 1/2" male thread x 1/2" hose, Banjo, HB050-90	1
10	GA5077693	Hose barb, Elbow, 90 degree, 1/4 male thread x 1/2" hose, Banjo, HB025/050-90	1
11	GA5077700	Hose barb, Straight, 3/8" male thread x 1/2" hose, Banjo, HB038-050	1
12	GA5000469	Hose clamp, 1/2", SS	6
13	GA2000211	Hose, Pressure, 12mm, Black, 250psi, HOS13P X 70mm	1
14	GA2000211	Hose, Pressure, 12mm, Black, 250psi, HOS13P cut 1200mm	1
15	GA2000211	Hose, Pressure, 12mm, Black, 250psi, HOS13P cut 450mm	1
16	GA5077911	Nipple, Short, 1/2" male thread x 1/2" male thread, Banjo. NIP050-SH	1
17	GA5077989	Nozzle body, Single, 3/4", No spray stop, Teejet, QJ7421-3/4-NYB	1
18	GA5077964	Nozzle body, Single, 3/4", Teejet, QJ17560A-3/4- NYB	3
19	GA5077983	Nozzle cap & washer, Black, Nylon, Teejet, QJ4676-1/4-NYR	1
20	GA8100464	Nozzle cap, Nylon, Black, Teejet, Suit flat spray smaller capacity nozzles (up to 08), CP25611-1- NY	3
21	GA5076913	Nozzle cap, quick fit, suit ASJ and Albuz, Arag, 402901	2
22	GA5000141	Nut M10 Nyloc ZP	1
23	GA5070710	Nut with flange, Plastic, M8 x 1.25	3
24	GA5078133	Street elbow, 90 degree, 1/2" female thread x 1/2" male thread, Banjo	1
25	GA5077751	Tee, Hose barb, 1/2", Banjo, HBT050-050	1
26	GA5018323	Valve, Ball, 1/4 male, female, Black Lever handle, Chromed	1
27	GA5018309	Valve, Ball, 12mm, 1/2" female, Lever handle, Brass	1
28	GA5000117	Washer 10mm Flat SS HD	2
29	GA5055245	Washer, Nozzle Cap Seal, Rubber, 19 OD x 9 ID, Suit Tee Jet Nozzle, Replaces CP19438-EPR	4

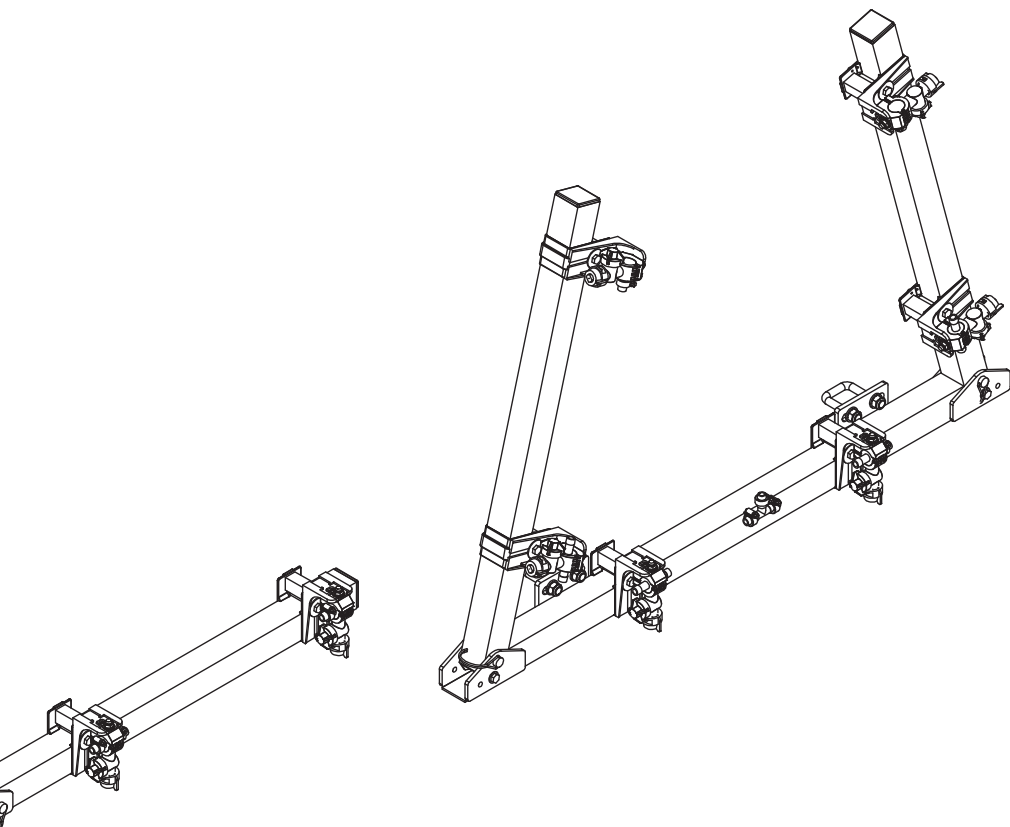


# 3M Boom 6 Nozzle Manual Fold

GA4900093

Pos.	Part No.	Description	Qty.
1	GA4653335	Boom Centre, 3m Folding	1
2	GA4668910	RHS AL 50 x 50 x 3 Cut 820 RTD	2
3	GA5000469	½" SS hose clamp	13
4	GA5000577	Washer 12mm Flat SS HD	4
5	GA5003643	Washer 8mm Flat ZP HD	4
6	GA5003645	5 - 16 x 1 1-4 Flat washer SS	12
7	GA5003783	50 x 50 square tube insert black	2
8	GA5004749	Bolt M8 x 80 GR8.8 ZP	14
9	GA5004917	Nut M8 Nyloc ZP	8
10	GA5012461	Nut M12 Nyloc ZP	4
11	GA5013003	Pipe linch pin, 8 OD x 60 long	2
12	GA5018257	Nozzle bracket, plastic, L shape, short	6
13	GA5018259	Nozzle bracket, plastic, U shape	6
14	GA5052575	U bolt, Square top, M12 x 40mm x 70mm	2
15	GA5055245	Seat washer, Rubber suit tee jet nozzle	6
16	GA5066965	Spacer suit nozzle brackets	6
17	GA5070710	Nut with flange, Plastic, M8 x 1.25	6
18	GA5077159	Filter, Nozzle tip, Red, 50 mesh, Polypropylene & SS, Teejet, 8079-PP-50	6



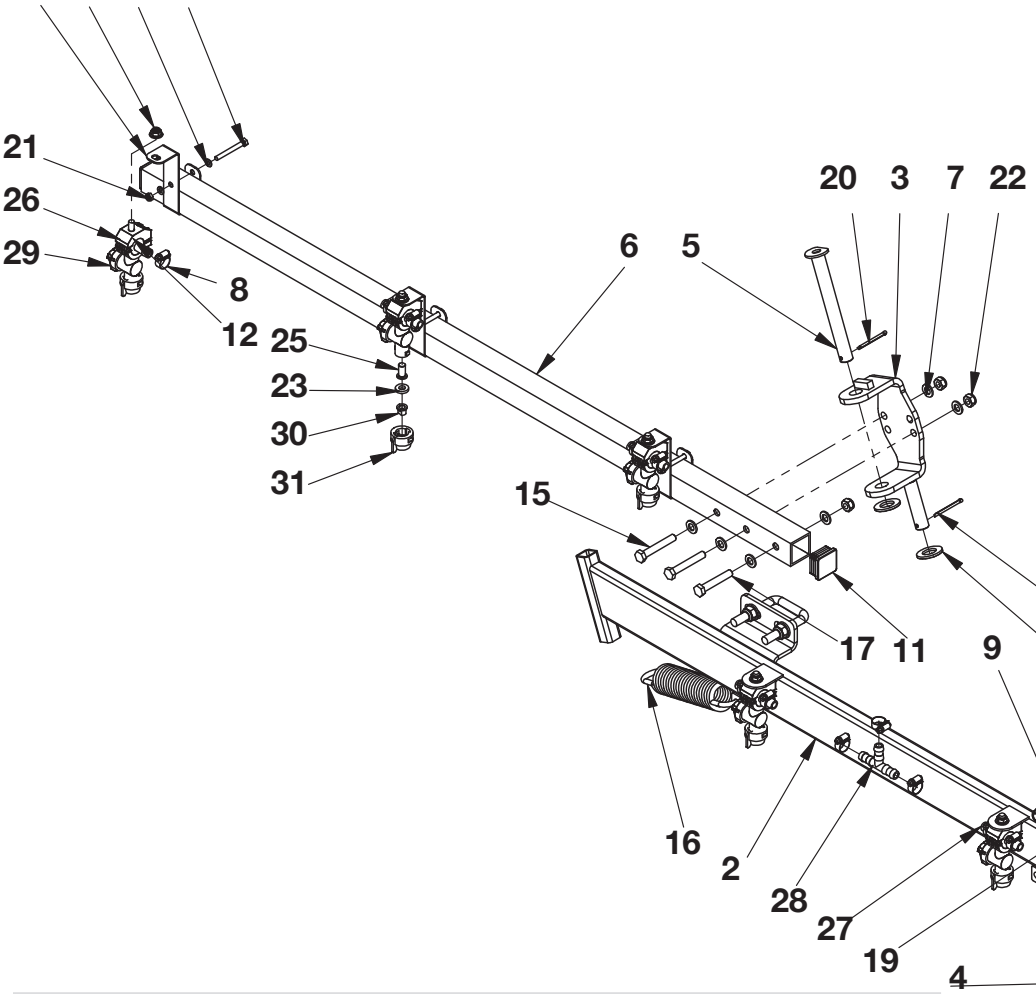


Pos.	Part No.	Description	Qty.
19	GA5077497	Hose barb suit nozzle body, Single ½", Nylon, Teejet, CP38936-NYB	2
20	GA5077498	Joiner, Double hose barb, ½", CP38937-NYB	4
21	GA5077751	Tee, Hose barb, ½", Banjo, HBT050-050	1
22	GA5077964	Nozzle body, Single, ¾", Teejet	6
23	GA8100020	Nozzle tip, Air injector compact IDK120-02	6
24	GA8100464	Nozzle cap, Nylon, Black, Teejet, Suit flat spray smaller capacity nozzles (up to 08), CP25611-1-NY	6

# 4M Boom 8 Nozzle Manual Fold

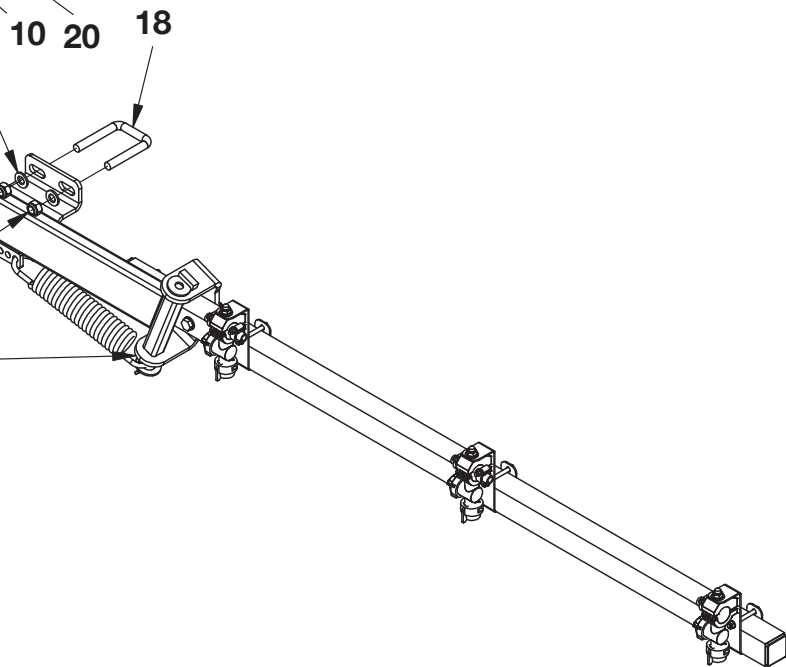
GA4900096

1 24 14 13



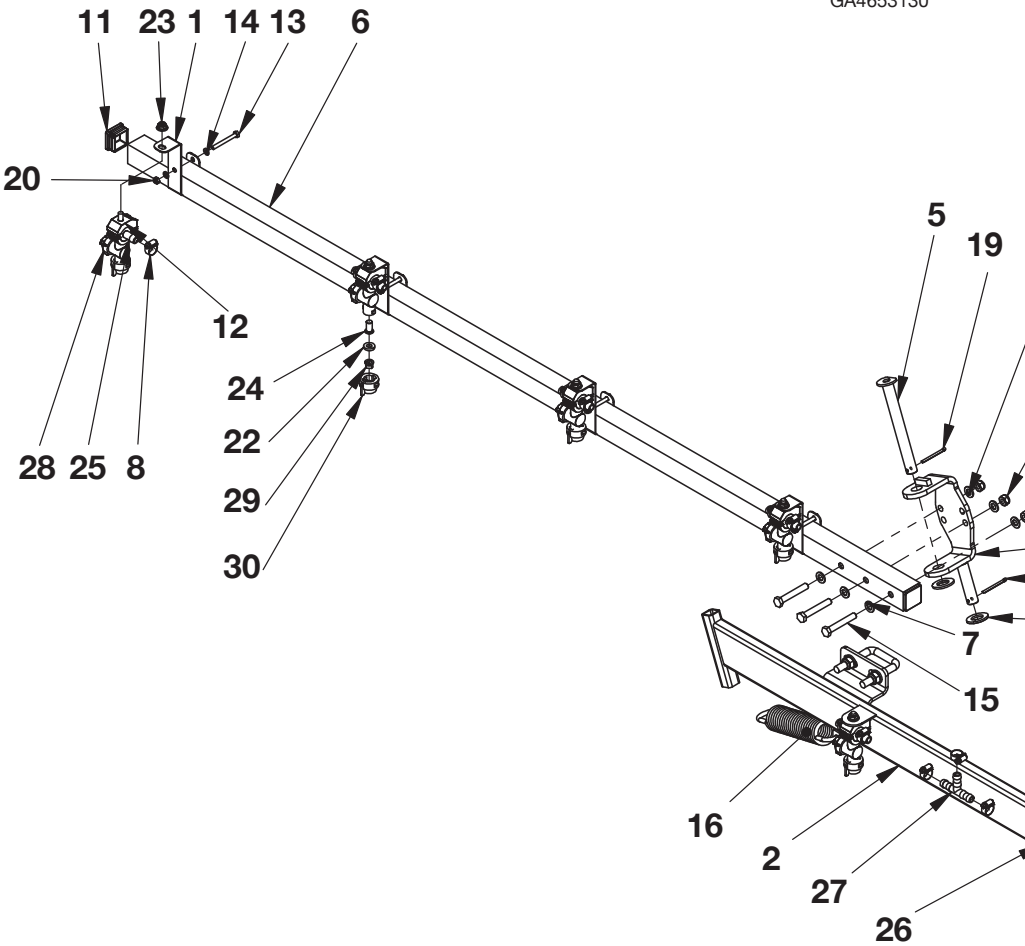
Pos.	Part No.	Description	Qty.
1	F70247A	Nozzle bracket to suit 40x40 RHS	6
2	GA4653340	Boom centre 4-5m	1
3	GA4653341	4m Outer Boom mount Right Hand	1
4	GA4653342	4m Outer Boom mount Left Hand	1
5	GA4653560	Pin Small Boom	2
6	GA4668920	RHS AL 40 x 40 x 3 Cut 1320 RTD	2
7	GA5000117	Washer 10mm Flat SS HD	12
8	GA5000469	½" SS hose clamp	17
9	GA5000577	Washer 12mm Flat SS HD	4
10	GA5001741	Washer 20mm Flat SS HD	4

Pos.	Part No.	Description	Qty.
11	GA5002963	Insert 38x38mm Cap	4
12	GA5004085	Bolt M8 x 20 GR8.8 ZP	8
13	GA5004093	Bolt M6 x 55 GR8.8 ZP	6
14	GA5004437	Washer 6mm Flat SS	12
15	GA5006101	Bolt M10 x 65 GR8.8 ZP	4
16	GA5006345	Spring small boom 120H	2
17	GA5011175	Bolt M10 x 60 GR8.8 ZP	2
18	GA5011251	U bolt Square top M12 x 52mm x 80mm	2
19	GA5012461	Nut M12 Nyloc ZP	4
20	GA5015681	Split Cotter Pin M4 x 50 ZP	4
21	GA5048115	Nut M6 Nyloc ZP	6
22	GA5051445	Nut M10 Nyloc SS	6
23	GA5055245	Seat washer, Rubber suit tee jet nozzle	8
24	GA5070710	Nut with flange, Plastic, M8 x 1.25	8
25	GA5077159	Filter, Nozzle tip, Red, 50 mesh, Polypropylene & SS, Teejet, 8079-PP-50	8
26	GA5077497	Hose barb suit nozzle body, Single ½", Nylon, Teejet, CP38936-NYB	2
27	GA5077498	Joiner, Double hose barb, ½", CP38937-NYB	6
28	GA5077751	Tee, Hose barb, ½", Banjo, HBT050-050	1
29	GA5077964	Nozzle body, Single, ¾", Teejet	8
30	GA8100020	Nozzle tip, Air injector compact IDK120-02	8
31	GA8100464	Nozzle cap, Nylon, Black, Teejet, Suit flat spray smaller capacity nozzles (up to 08), CP25611-1-NY	8



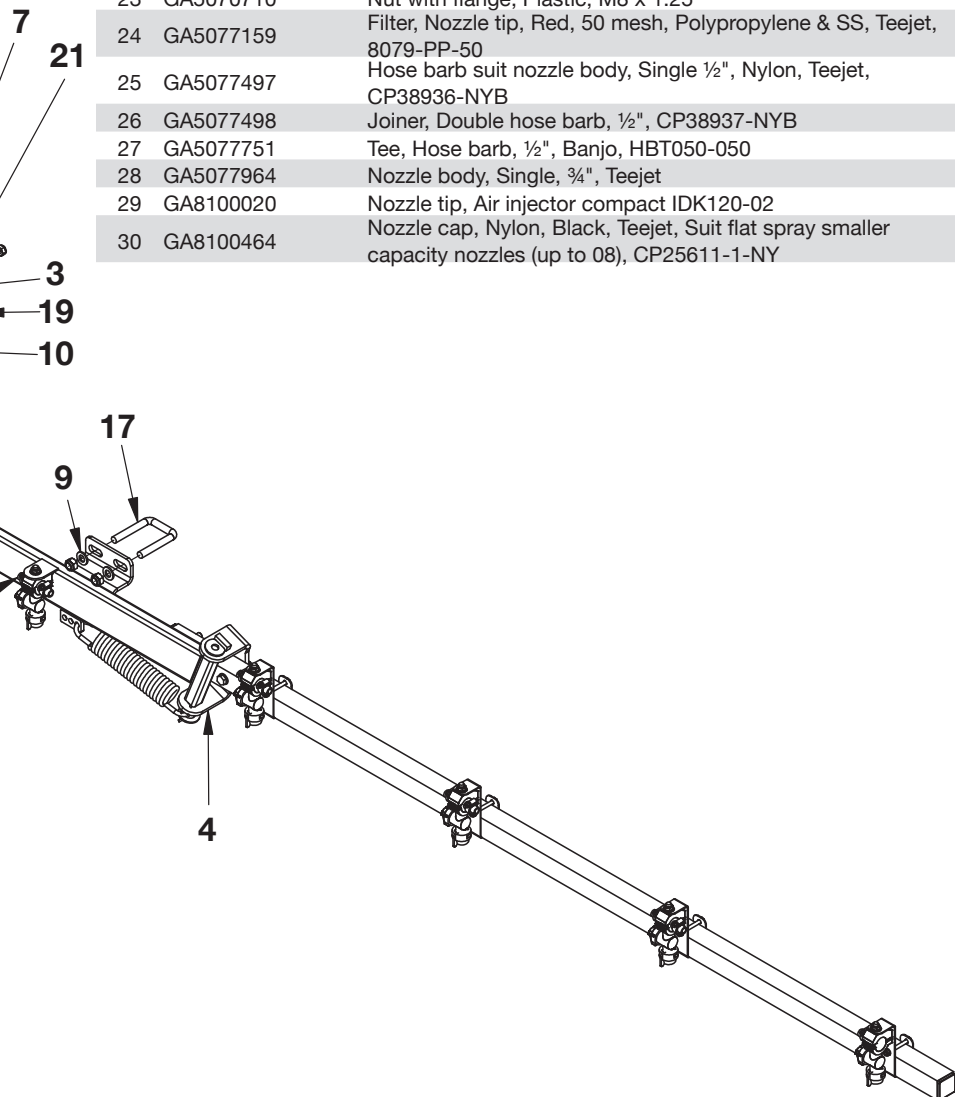
# 5M Boom 10 Nozzle Manual Fold

GA4653130



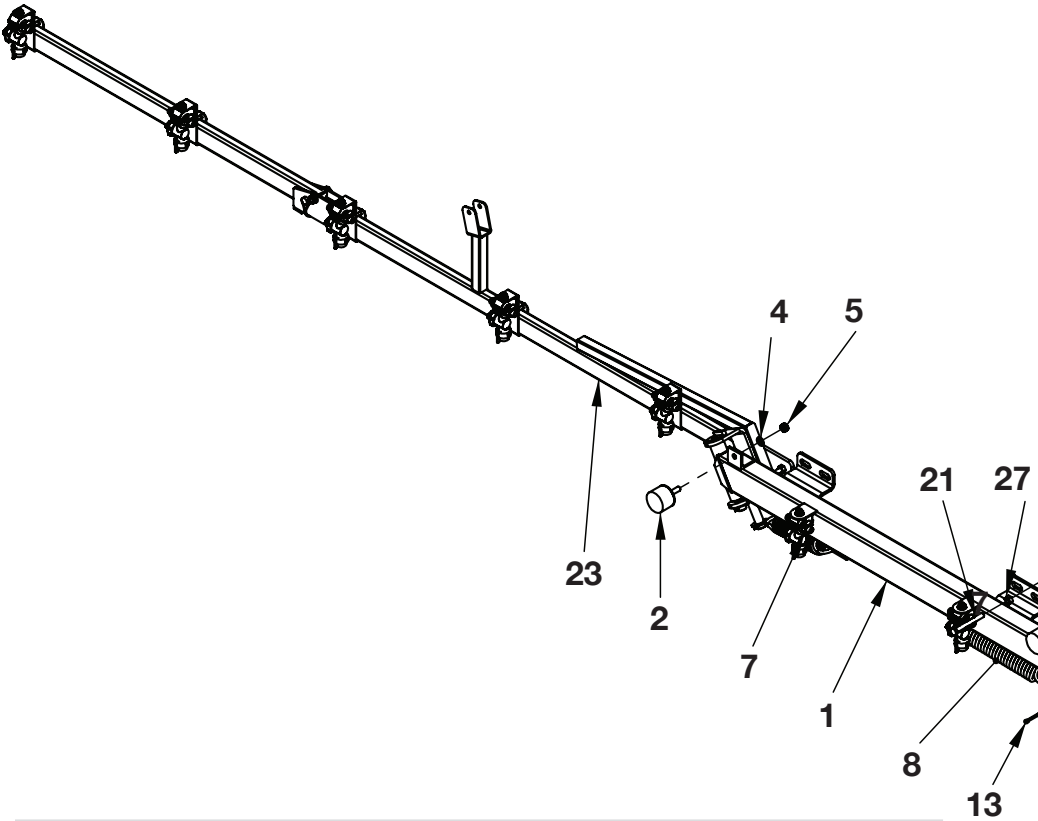
Pos.	Part No.	Description	Qty.
1	F70247A	Nozzle bracket to suit 40x40 RHS	8
2	GA4653340	Boom centre 4-5m	1
3	GA4653341	4m Outer Boom mount Right Hand	1
4	GA4653342	4m Outer Boom mount Left Hand	1
5	GA4653560	Pin Small Boom	2
6	GA4668925	RHS AL 40 x 40 x 3 Cut 1772 RTD	2
7	GA5000117	Washer 10mm Flat SS HD	12
8	GA5000469	½" SS hose clamp	21
9	GA5000577	Washer 12mm Flat SS HD	4
10	GA5001741	Washer 20mm Flat SS HD	4
11	GA5002963	Insert 38x38mm Cap	4
12	GA5004085	Bolt M8 x 20 GR8.8 ZP	10

Pos.	Part No.	Description	Qty.
13	GA5004093	Bolt M6 x 55 GR8.8 ZP	8
14	GA5004437	Washer 6mm Flat SS	16
15	GA5006101	Bolt M10 x 65 GR8.8 ZP	6
16	GA5006345	Spring small boom 120H	2
17	GA5011251	U bolt Square top M12 x 52mm x 80mm	2
18	GA5012461	Nut M12 Nyloc ZP	4
19	GA5015681	Split Cotter Pin M4 x 50 ZP	4
20	GA5048115	Nut M6 Nyloc ZP	8
21	GA5051445	Nut M10 Nyloc SS	6
22	GA5055245	Seat washer, Rubber suit tee jet nozzle	10
23	GA5070710	Nut with flange, Plastic, M8 x 1.25	10
24	GA5077159	Filter, Nozzle tip, Red, 50 mesh, Polypropylene & SS, Teejet, 8079-PP-50	10
25	GA5077497	Hose barb suit nozzle body, Single ½", Nylon, Teejet, CP38936-NYB	2
26	GA5077498	Joiner, Double hose barb, ½", CP38937-NYB	8
27	GA5077751	Tee, Hose barb, ½", Banjo, HBT050-050	1
28	GA5077964	Nozzle body, Single, ¾", Teejet	10
29	GA8100020	Nozzle tip, Air injector compact IDK120-02	10
30	GA8100464	Nozzle cap, Nylon, Black, Teejet, Suit flat spray smaller capacity nozzles (up to 08), CP25611-1-NY	10



# 6M Boom 2 Stage Manual Fold

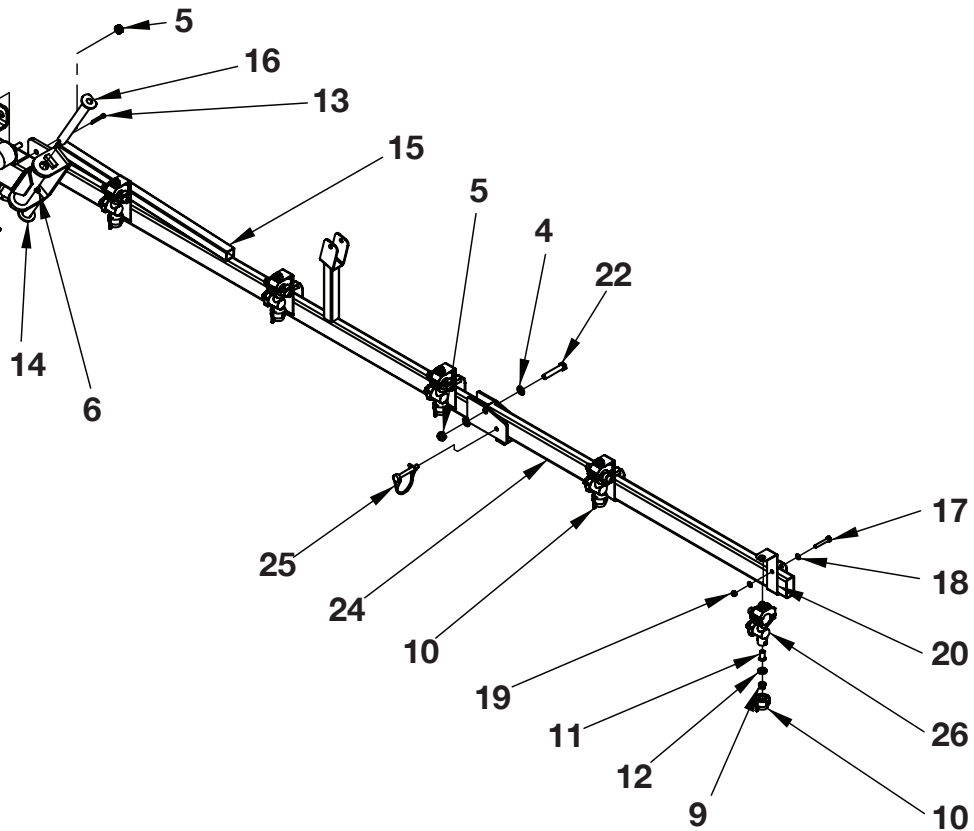
GA4907140



Pos.	Part No.	Description	Qty.
1	GA4600020	6m Folding Boom Centre Sub Assembly	1
2	GA5052815	Rubber Stopper, Diameter 50 x 35 Long, With M10 x 35 Stud	2
3	GA5023620	Teejet Nozzle Body Inline Manifold Assembly ½"	10
4	GA5000117	Washer 10mm Flat SS HD	6
5	GA5051445	Nut M10 Nyloc SS	6
6	GA5012203	Grease Nipple ¼" UNF Short	2
7	GA5000469	Hose clamp, ½", SS	22
8	GA5006345	Spring, Tension, 45 OD x 260 long x 7mm, 120H, small boom	2
9	GA8100020	Nozzle tip, Air injector compact IDK120-02	12
10	GA8100464	Nozzle cap, Nylon, Black, Teejet, Suit flat spray smaller capacity nozzles (up to 08), CP25611-1-NY	12
11	GA5077159	Filter, Nozzle tip, Red, 50 mesh, Polypropylene & SS, Teejet, 8079-PP-50	12
12	GA5055245	Washer, Nozzle Cap Seal, Rubber, 19 OD x 9 ID, Suit Tee Jet Nozzle, Replaces CP19438-EPR	12
13	GA5003157	5.0 X 40 Steel Split Co	4
14	GA5001741	Washer 20mm Flat SS HD	4
15	GA4600075	6m Folding Boom Pivot Left Arm Assembly	1

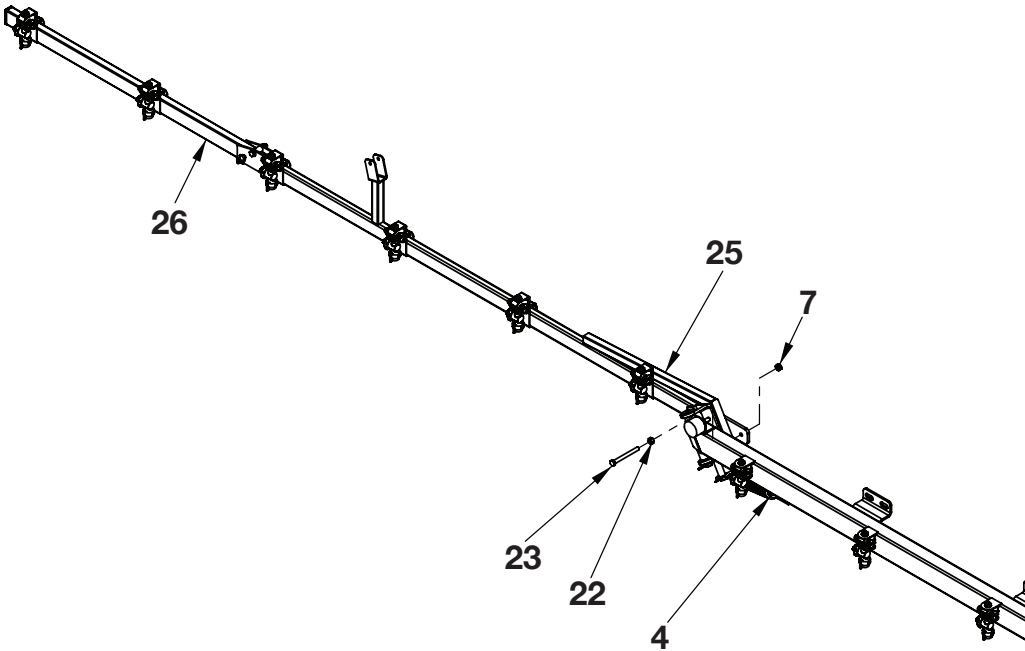


Pos.	Part No.	Description	Qty.
16	GA4653560	Pin Small Boom	2
17	GA5004081	Bolt M6 x 40 GR8.8 ZP	10
18	GA5004437	Washer 6mm Flat SS	20
19	GA5004429	Nut M6 Nyloc SS	10
20	F70276A	Folded nozzle bkt suit 50x25 RHS (std single line)	10
21	GA5011182	Bolt M10 x 85 GR8.8 ZP	2
22	GA5011173	Bolt M10 x 55 GR8.8 ZP	2
23	GA4600035	6m Folding Boom Pivot Right Arm Assembly	1
24	GA4600090	Fold Arm, 6m Dual Folding Boom	2
25	GA5013003	Pipe linch pin, 8 OD x 60 long	2
26	GA5023625	Nozzle body, Single, ¾", Complete with end manifold ½" hose outlet, Teejet	2
27	GA5012459	Nut M10 Hex ZP	2



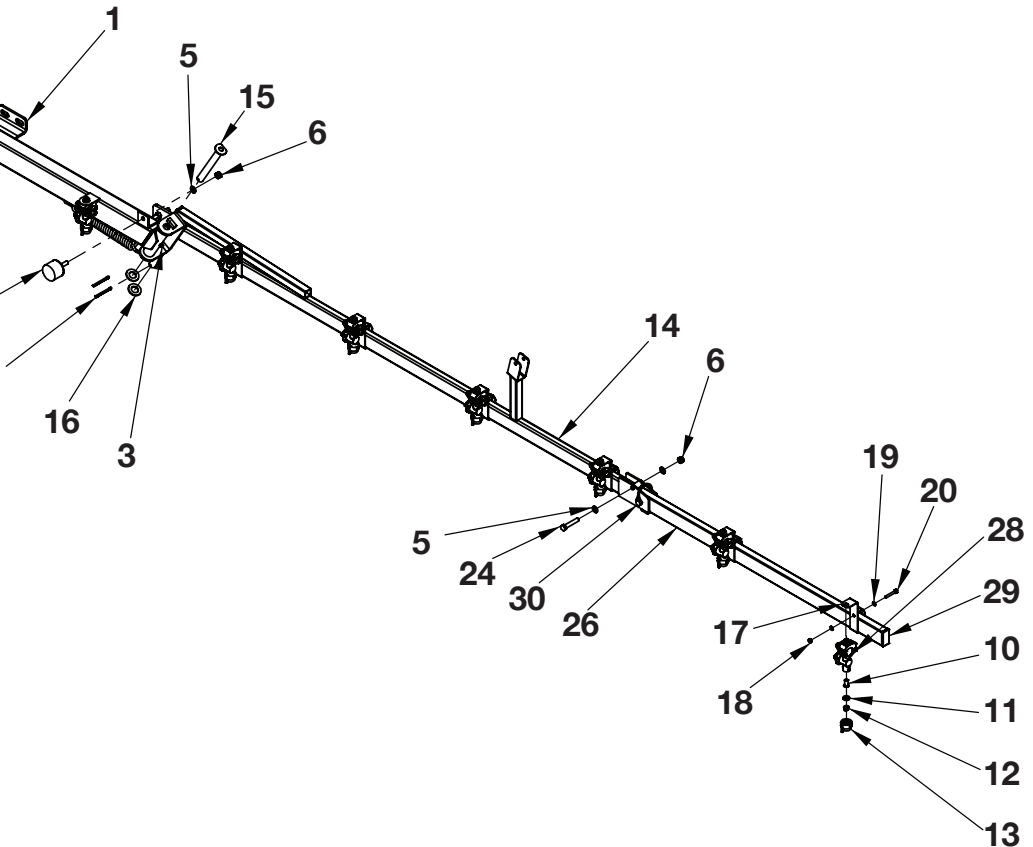
# 8M Boom 16 Nozzle Manual Fold

GA4900105-MF-NS



Pos.	Part No.	Description	Qty.
1	GA4653345	Boom centre, 6-8m	1
2	GA5052815	Rubber Stopper, Diameter 50 x 35 Long, with M10 x 35 Stud	2
3	GA5012203	Grease Nipple ¼" UNF Short	2
4	GA5006345	Spring, Tension, 45 OD x 260 long x 7mm, 120H, small boom	2
5	GA5000117	Washer 10mm Flat SS HD	6
6	GA5000141	Nut M10 Nyloc ZP	4
7	GA5051445	Nut M10 Nyloc SS	2
8	GA5023620	Teejet Nozzle Body Inline Manifold Assembly ½"	14
9	GA5000469	Hose clamp, ½", SS	30
10	GA5077159	Filter, Nozzle tip, Red, 50 mesh, Polypropylene & SS, Teejet, 8079-PP-50	16
11	GA5055245	Washer, Nozzle Cap Seal, Rubber, 19 OD x 9 ID, Suit Tee Jet Nozzle, Replaces CP19438-EPR	16
12	GA8100020	Nozzle tip, Air injector compact IDK120-02	16
13	GA8100464	Nozzle cap, Nylon, Black, Teejet, Suit flat spray smaller capacity nozzles (up to 08), CP25611-1-NY	16
14	GA4600310	Boom Wing, RH, 8m, Dual Fold	1
15	GA4653560	Pin Small Boom	2

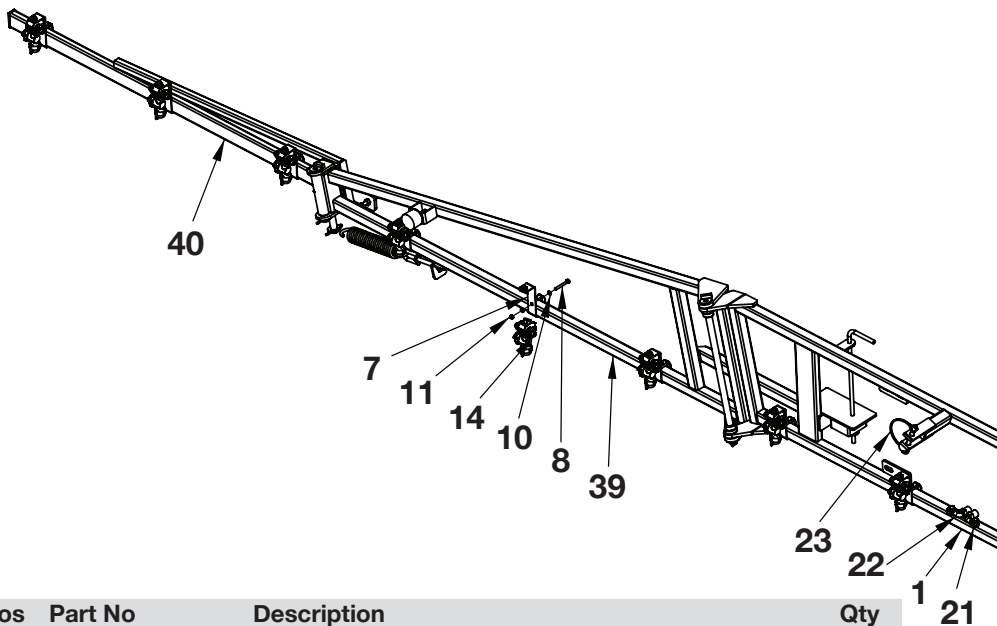
Pos.	Part No.	Description	Qty.
16	GA5001741	Washer 20mm Flat SS HD	4
17	F70276A	Folded nozzle bkt suit 50x25 RHS (std single line)	12
18	GA5048115	Nut M6 Nyloc ZP	12
19	GA5004437	Washer 6mm Flat SS	24
20	GA5004081	Bolt M6 x 40 GR8.8 ZP	12
21	GA5003157	Split Pin 5mm x 63mm ZP	4
22	GA5000119	Nut M10 Hex SS	2
23	GA5006091	Bolt M10 x 100 GR8.8 ZP	2
24	GA5011173	Bolt M10 x 55 GR8.8 ZP	2
25	GA4600315	Boom Wing, LH, 8m, Dual Fold	1
26	GA4653347	6m to 8m flip over boom	2
27	GA5023625	Nozzle body, Single, ¾", Complete with end manifold ½" hose outlet, Teejet	1
28	GA5023625	Nozzle body, Single, ¾", Complete with end manifold ½" hose outlet, Teejet	1
29	GA5003733	Tube Insert, 50 x 25, Rectangular, Plastic, Black	2
30	GA5013003	Pipe linch pin, 8 OD x 60 long	2



# 8M Boom 20 Jet Nozzle Manual Crossfold

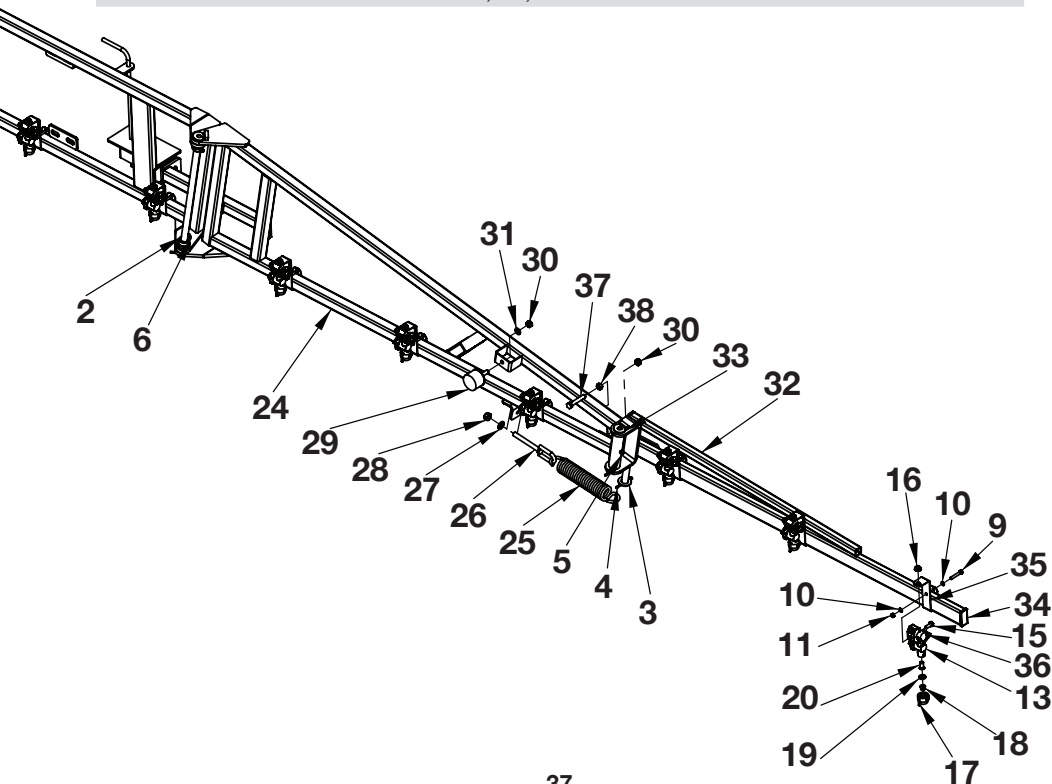
GA4900105-MF-NS-CO

Pos	Part No	Description	Qty
1	GA4653350	Boom centre 8m	1
2	GA4653565	Pin 8m Boom	2
3	GA5001741	Washer 20mm Flat SS HD	6
4	GA5003157	Split Pin 5mm x 63mm ZP	6



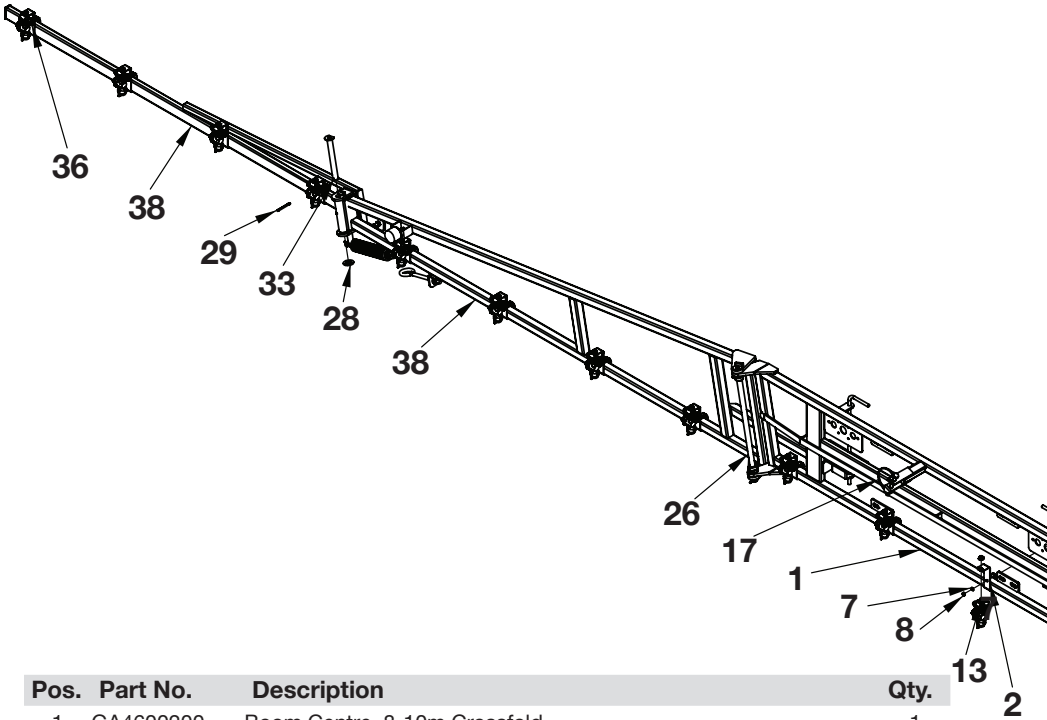
Pos	Part No	Description	Qty
5	GA5012203	Grease Nipple ¼" UNF Short	4
6	GA5009637	Grease Nipple ¼" UNF 90 deg	2
7	F70248A	35x35 single line nozzle bracket	10
8	GA5004091	Bolt M6 x 50 GR8.8 ZP	10
9	GA5004081	Bolt M6 x 40 GR8.8 ZP	6
10	GA5004437	Washer 6mm Flat SS	32
11	GA5048115	Nut M6 Nyloc ZP	16
12	GA5077964	Nozzle body, Single, ¾", Teejet, QJ17560A-¾-NYB	15
13	GA5077964	Nozzle body, Single, ¾", Teejet, QJ17560A-¾-NYB	1
14	GA5077498	Joiner, Double hose barb, ½", CP38937-NYB	14
15	GA5004085	Bolt M8 x 20 GR8.8 ZP	16
16	GA5070710	Nut with flange, Plastic, M8 x 1.25	16
17	GA8100464	Nozzle cap, Nylon, Black, Teejet, Suit flat spray smaller capacity nozzles (up to 08), CP25611-1-NY	16
18	GA8100020	Nozzle tip, Air injector compact IDK120-02	16
19	GA5055245	Washer, Nozzle Cap Seal, Rubber, 19 OD x 9 ID, Suit Tee Jet Nozzle, Replaces CP19438-EPR	16
20	GA5077159	Filter, Nozzle tip, Red, 50 mesh, Polypropylene & SS, Teejet, 8079-PP-50	16

Pos	Part No	Description	Qty
21	GA5000469	Hose clamp, ½", SS	32
22	GA5077708	Hose barb, Elbow, 90 degree, ½" male thread x ½" hose, Banjo, HB050-90	2
23	GA5048380	Pin shaft locking 11mm	1
24	GA4655820	Boom, RH Inner, 8m Crossfold	1
25	GA5006345	Spring, Tension, 45 OD x 260 long x 7mm, 120H, small boom	2
26	GA5008545	Eye bolt, Bolt M12 x 100, Eye 63mm x 18mm	2
27	GA5000577	Washer 12mm Flat SS HD	2
28	GA5012461	Nut M12 Nyloc ZP	2
29	GA5052815	Rubber Stopper, Diameter 50 x 35 Long, with M10 x 35 Stud	2
30	GA5051445	Nut M10 Nyloc SS	4
31	GA5000117	Washer 10mm Flat SS HD	2
32	GA4655905	Boom outer, RH, 8m Crossfold	1
33	GA4653560	Pin Small Boom	2
34	GA5003733	Tube Insert, 50 x 25, Rectangular, Plastic, Black	2
35	F70276A	Folded nozzle bkt suit 50x25 RHS (std single line)	6
36	GA5077497	Hose barb suit nozzle body, Single ½", Nylon, Teejet, CP38936-NYB	2
37	GA5011175	Bolt M10 x 60 GR8.8 ZP	2
38	GA5000119	Nut M10 Hex SS	2
39	GA4655825	Boom, LH Inner, 8m Crossfold	1
40	GA4655910	Boom outer, LH, 8m Crossfold	1



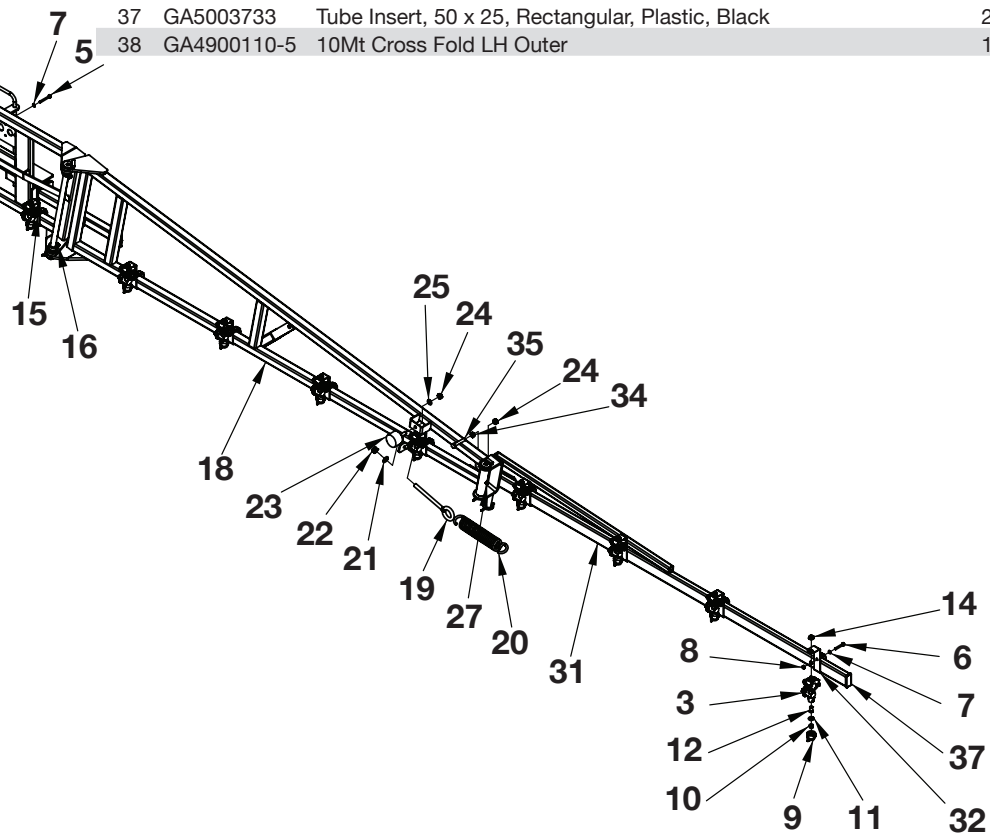
# 10M Boom 20 Jet Nozzle Manual Crossfold

GA4900111-MF-NS-CF



Pos.	Part No.	Description	Qty.
1	GA4600200	Boom Centre, 8-10m Crossfold	1
2	F70248A	35x35 single line nozzle bracket	12
3	GA5077964	Nozzle body, Single, ¾", Teejet, QJ17560A-3/4-NYB	20
4	GA5000469	Hose clamp, ½", SS	38
5	GA5004091	Bolt M6 x 50 GR8.8 ZP	12
6	GA5004081	Bolt M6 x 40 GR8.8 ZP	8
7	GA5004437	Washer 6mm Flat SS	40
8	GA5048115	Nut M6 Nyloc ZP	20
9	GA8100464	Nozzle cap, Nylon, Black, Teejet, Suit flat spray smaller capacity nozzles (up to 08), CP25611-1-NY	20
10	GA8100020	Nozzle tip, Air injector compact IDK120-02	20
11	GA5055245	Washer, Nozzle Cap Seal, Rubber, 19 OD x 9 ID, Suit Tee Jet	20
12	GA5077159	Nozzle, Replaces CP19438-EPR Filter, Nozzle tip, Red, 50 mesh, Polypropylene & SS, Teejet, 8079-PP-50	20
13	GA5004085	Bolt M8 x 20 GR8.8 ZP	20
14	GA5070710	Nut with flange, Plastic, M8 x 1.25	20
15	GA5077498	Joiner, Double hose barb, ½", CP38937-NYB	18
16	GA5009637	Grease Nipple ¼" UNF 90 deg	4
17	GA5048380	Pin shaft locking 11mm	1
18	GA4900110-2	10Mt Cross Fold RH Inner	1

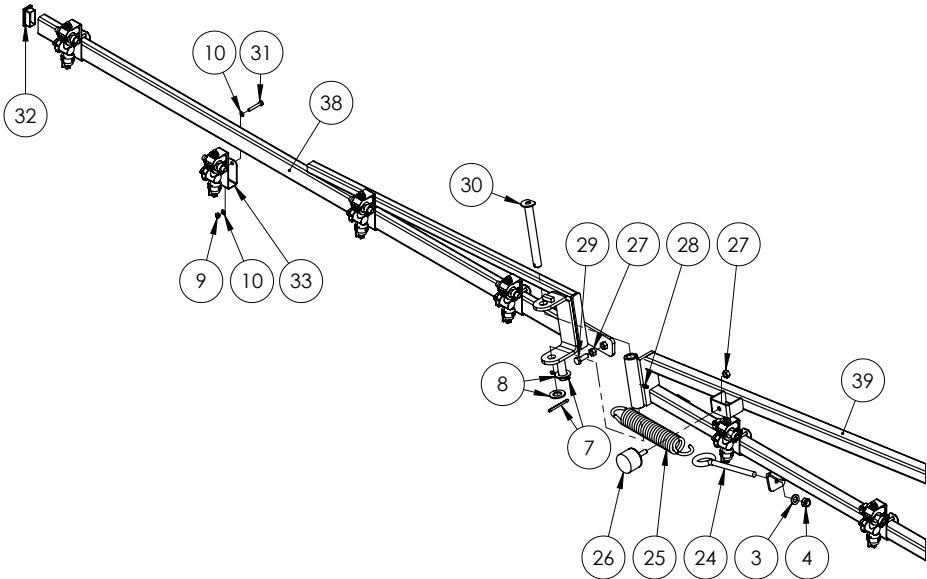
Pos.	Part No.	Description	Qty.
19	GA5048615	Bolt M12 x 220 Eye Bolt	2
20	GA5006345	Spring, Tension, 45 OD x 260 long x 7mm, 120H, small boom	2
21	GA5000577	Washer 12mm Flat SS HD	2
22	GA5012461	Nut M12 Nyloc ZP	2
23	GA5052815	Rubber Stopper, Diameter 50 x 35 Long, With M10 x 35 Stud	2
24	GA5051445	Nut M10 Nyloc SS	4
25	GA5000117	Washer 10mm Flat SS HD	2
26	GA4653565	Pin 8m Boom	2
27	GA5000577	Washer 12mm Flat SS HD	2
28	GA5001741	Washer 20mm Flat SS HD	6
29	GA5003157	Split Pin 5mm x 63mm ZP	6
30	GA4900110-3	10Mt Cross Fold LH Inner	1
31	GA4900110-4	10Mt Cross Fold RH Outer	1
32	F70276A	Folded nozzle bkt suit 50x25 RHS (std single line)	8
33	GA4653560	Pin Small Boom	2
34	GA5000119	Nut M10 Hex SS	2
35	GA5011173	Bolt M10 x 55 GR8.8 ZP	2
36	GA5077497	Hose barb suit nozzle body, Single ½", Nylon, Teejet, CP38936-NYB	2
37	GA5003733	Tube Insert, 50 x 25, Rectangular, Plastic, Black	2
38	GA4900110-5	10Mt Cross Fold LH Outer	1





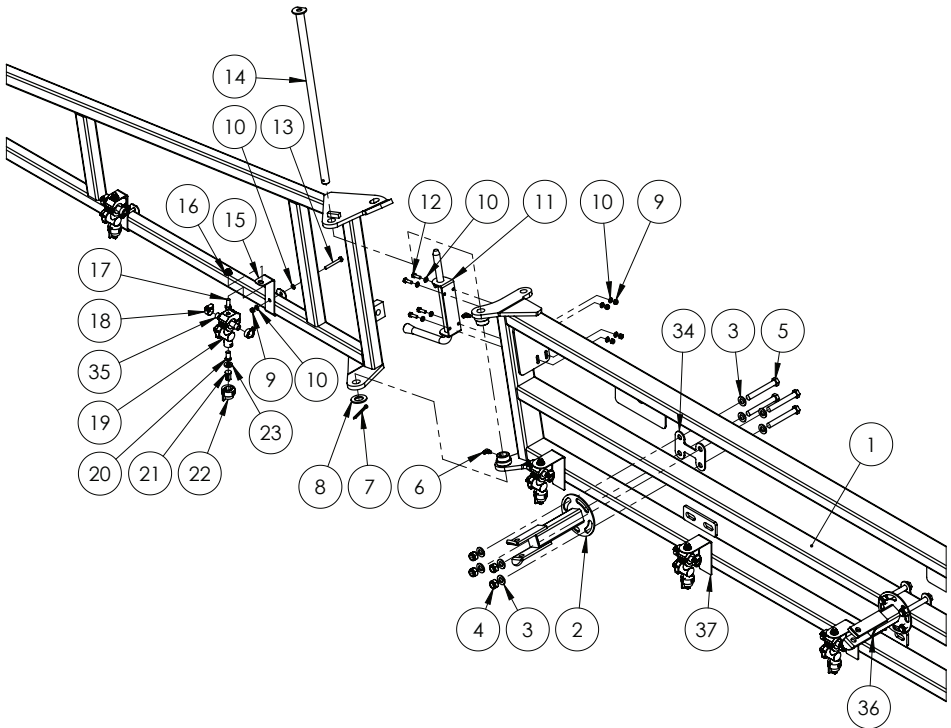
# 10M Boom 20 Jet Nozzle Manual Crossfold

GA4908470



Pos.	Part No.	Description	Qty.
1	GA4601285	Boom Centre, Crossfold, 8 - 10 Mtr	1
2	GA4661770	Boom, Catch, 155mm long	1
3	GA5000577	Washer 12mm Flat SS HD	18
4	GA5012461	Nut M12 Nyloc ZP	10
5	GA5011263	Bolt M12 x 90 GR8.8 ZP	8
6	GA5009637	Grease nipple, Elbow, 90 degree, 1/4" UNF male	4
7	GA5003157	Split Pin 5mm x 63mm ZP	6
8	GA5001741	Washer 20mm Flat SS HD	6
9	GA5048115	Nut M6 Nyloc ZP	24
10	GA5004437	Washer 6mm Flat SS	48
11	GA5073240	16mm Spring Loaded Pad Bolt	2
12	GA5004065	Bolt M6 x 20 GR8.8 ZP	8
13	GA5004091	Bolt M6 x 50 GR8.8 ZP	8
14	GA4653565	Pin, 8m Boom	2
15	F70248A	Bracket, Nozzle, SS, Suit 35 x 35 RHS	8
16	GA5070710	Nut Flange Plastic M8 x 1.25	20
17	GA5004085	Bolt M8 x 20 GR8.8 ZP	20
18	GA5000469	Hose clamp, 1/2", SS, 12-20/9W3	40
19	GA5077964	Nozzle body, Single, 3/4"	20
20	GA5077159	Filter, Nozzle tip, 50 mesh, Polypropylene & SS	20
21	GA8100020	Nozzle Tip, Air Injector Compact IDK 120-02, Yellow, Polymer, Lechler	20
22	GA8100464	Nozzle cap, Black	20

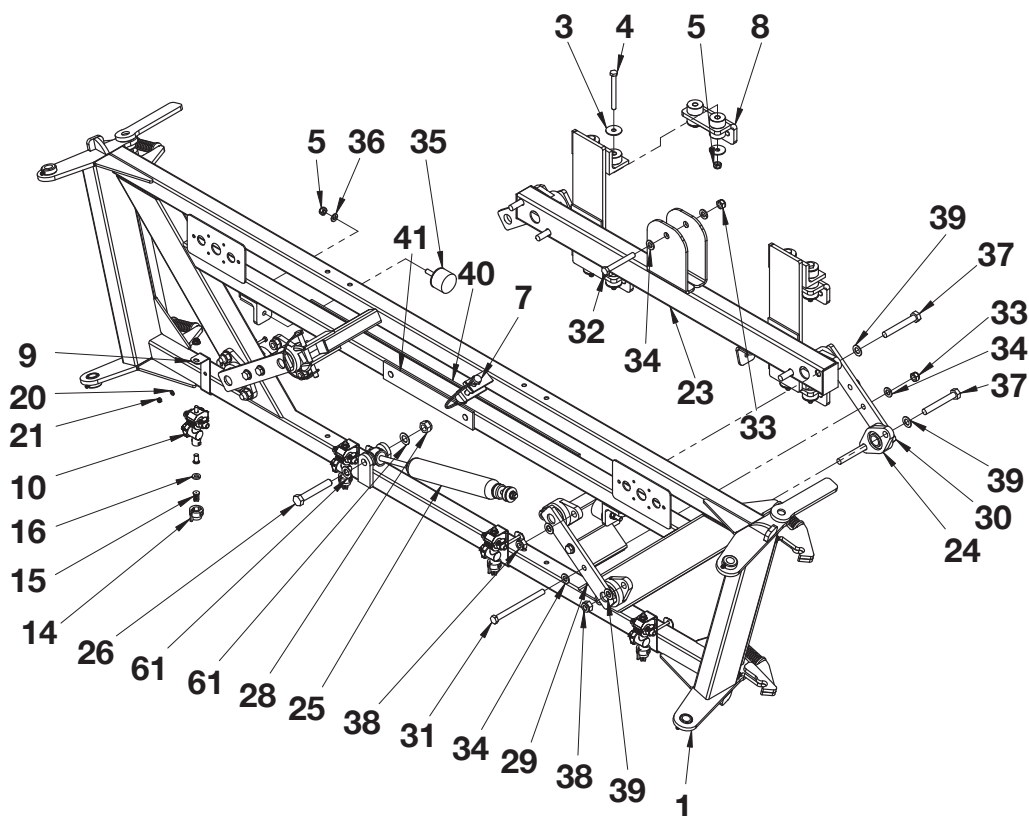
Pos.	Part No.	Description	Qty.
23	GA5055245	Washer, Nozzle Cap Seal, Rubber, 19 OD x 9 mm ID	20
24	GA5048615	Bolt M12 x 220 Eye Bolt	2
25	GA5006345	Spring, Tension, 45 OD x 260 long x 7mm, 120H, small boom	2
26	GA5052815	Rubber Stopper, Diameter 50 x 35 mm Long, With M10 x 35 Stud	2
27	GA5012459	Nut M10 Hex ZP	4
28	GA5012203	Grease nipple, Short, 1/4" UNF	2
29	GA5065455	Bolt M10 x 30 GR8.8 ZP	2
30	GA4653560	Pin Small Boom	2
31	GA5004081	Bolt M6 x 40 GR8.8 ZP	8
32	GA5003733	Tube Insert 50 x 25mm rectangular 0.83	2
33	F70276A	Bracket, Nozzle, SS, Suit 50 x 25 RHS	8
34	GA4402575	Plate, Boom Clamp, Backing plate	2
35	GA5077498	Joiner, Double hose barb, 1/2"	20
36	GA4661790	Boom, Catch, 90mm Long	1
37	GA4534650	Nozzle bracket, Weld on	4
38	GA4900110-5	10Mt Cross Fold LH Outer	1
	GA4900110-4	10Mt Cross Fold RH Outer	1
	GA4601300	Boom, 10Mt Cross Fold LH Inner	1
39	GA4601310	Boom, 10Mt Cross Fold RH Inner	1



# 10M Boom Twin Link Levelling Manual Fold

GA4900111-MF-TL

Pos.	Part No.	Description	Qty.
1	GA4653185	Boom centre twin link 10/12m	1
2	GA5006577	Bushing poly red 38 OD x 12 ID	24
3	GA5002595	Washer, 3/8" x 1 1/2" OD, Flat SS	16
4	GA5006091	Bolt M10 x 100 GR8.8 ZP	8
5	GA5000141	Nut M10 Nyloc ZP	10
6	GA5051445	Nut M10 Nyloc SS	2
7	GA5048380	Pin shaft locking 11mm	2
8	GA4513470	Rubber bush mtg for boom susp	4
9	F70246A	Bracket, Nozzle, SS, Suit 50 x 50 RHS	4
10	GA5077964	Nozzle body, Single, 3/4", Teejet, QJ17560A-3/4-NYB	20
11	GA5077498	Joiner, Double hose barb, 1/2", CP38937-NYB	18
12	GA5004085	Bolt M8 x 20 GR8.8 ZP	20
13	GA5070710	Nut with flange, Plastic, M8 x 1.25	20
14	GA8100464	Nozzle cap, Nylon, Black, Teejet, Suit flat spray smaller capacity nozzles (up to 08), CP25611-1-NY	20
15	GA8100020	Nozzle tip, Air injector compact IDK120-02	20
16	GA5055245	Washer, Nozzle Cap Seal, Rubber, 19 OD x 9 ID, Suit Tee Jet Nozzle, Replaces CP19438-EPR	20
17	GA5077159	Filter, Nozzle tip, Red, 50 mesh, Polypropylene & SS, Teejet, 8079-PP-50	20
18	GA5004107	Bolt M6 x 70 GR8.8 ZP	4
19	GA5004091	Bolt M6 x 50 GR8.8 ZP	15
20	GA5004437	Washer 6mm Flat SS	38
21	GA5048115	Nut M6 Nyloc ZP	19
22	GA5000469	Hose clamp, 1/2", SS	38
23	GA4655625	Boom twin link sus for 10/12m	1
24	GA5016935	Bearing assembly with 2 bolt flanged housing, UC205-16 bearing & FL205 housing	8
25	GA5015899	Steering Damper SC2914	1
26	GA5011269	Bolt M16 x 100 GR8.8 ZP	1
27	GA5000931	Bolt M16 x 50 GR8.8 ZP	4
28	GA5012469	Nut M24 Nyloc ZP	1
29	GA4655620	Boom twin link arm for 10/12m	2
30	12TLB018LAS	Twin link arm main plate	2
31	GA5000277	Bolt M12 x 160 GR8.8 ZP	4
32	GA5011263	Bolt M12 x 90 GR8.8 ZP	1
33	GA5012461	Nut M12 Nyloc ZP	5
34	GA5000577	Washer 12mm Flat SS HD	10
35	GA5052815	Rubber Stopper, Diameter 50 x 35 Long, With M10 x 35 Stud	4
36	GA5000117	Washer 10mm Flat SS HD	4
37	GA5000699	Bolt M14 x 100 GR8.8 ZP	8
38	GA5012427	Nut M14 Nyloc ZP	8
39	GA5050325	Washer 14mm Flat SS	16
40	GA5072195	Plastic Wear Strip Boom Rest Polystone 7000SR 50 x 5 x 900	1
41	GA5072200	Plastic Wear Strip Boom Rest Polystone 7000SR 50 x 5 x 300	1
42	GA5005119	Rivet Blind 4.8 x 30	6
43	GA5012203	Grease Nipple 1/4" UNF Short	1

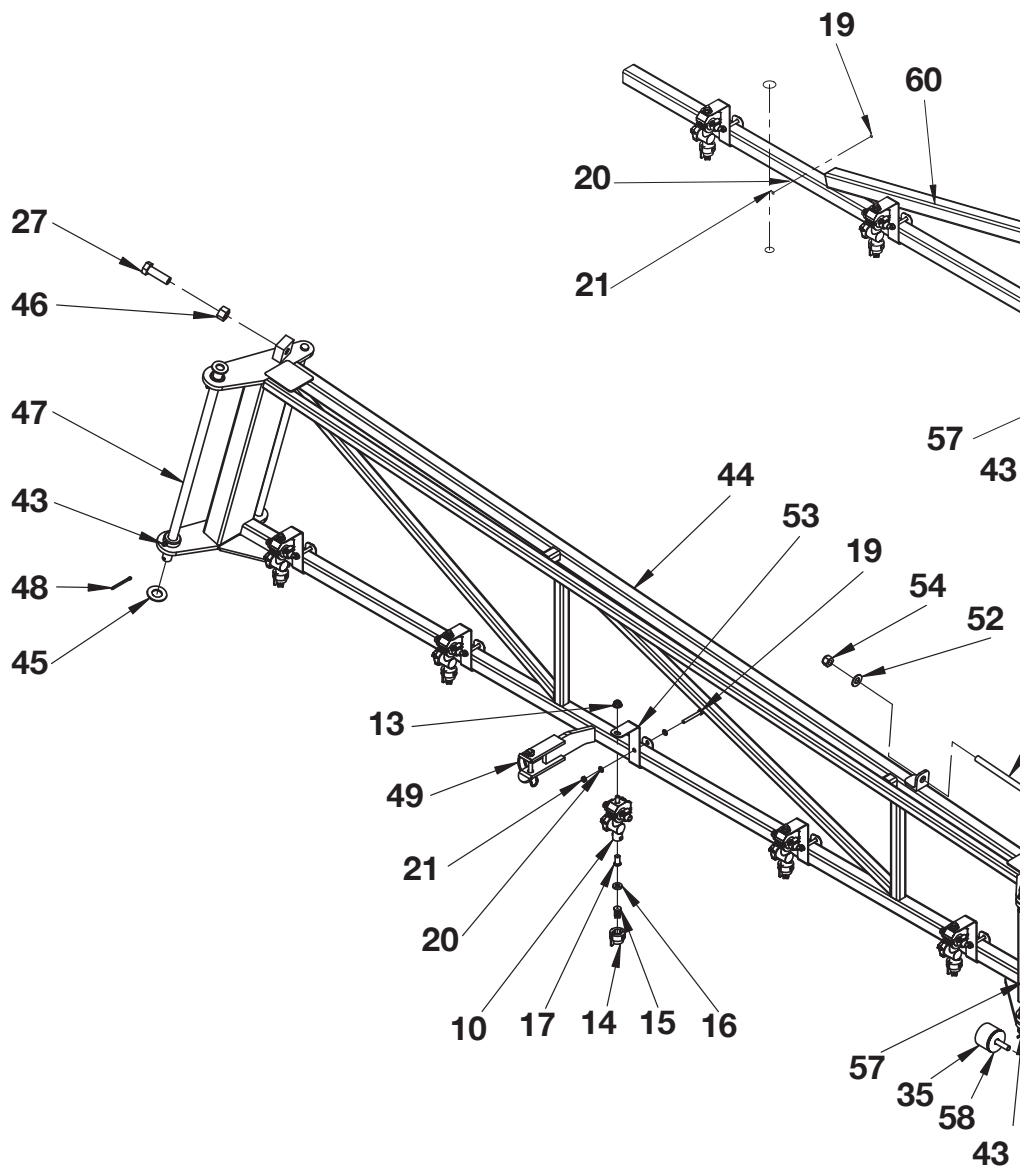


Pos.	Part No.	Description	Qty.
44	GA4655870	Boom inner twin link 10/12m RH	6
45	GA5001045	Washer 3/4" Flat ZP	16
46	GA5012385	Nut M16 ZP	1
47	GA4653575	Inner pivot pin	8
48	GA5015681	Split Cotter Pin M4 x 50 ZP	4
49	GA5013003	Linch Pin 5/16 Round (Half)	2
50	GA5006345	Spring small boom 120H	4
51	GA5048615	Bolt M12 x 220 Eye Bolt	2
52	GA5017673	Washer 1/2" Flat ZP HD	2
53	F70269A	Trijet noz brkto suit 35x35RHS (2mm S/S)	2
54	GA5050580	Nut 1/2" UNC Nyloc ZP	2
55	GA4655875	Boom inner twin link 10/12m LH	16
56	GA4656080	Boom outer twin link 10m RH	1
57	GA4653580	Outer pivot pin twin link boom	2
58	12TLB014LAS	Shim plate suit rubber stopper on twin link boom	2

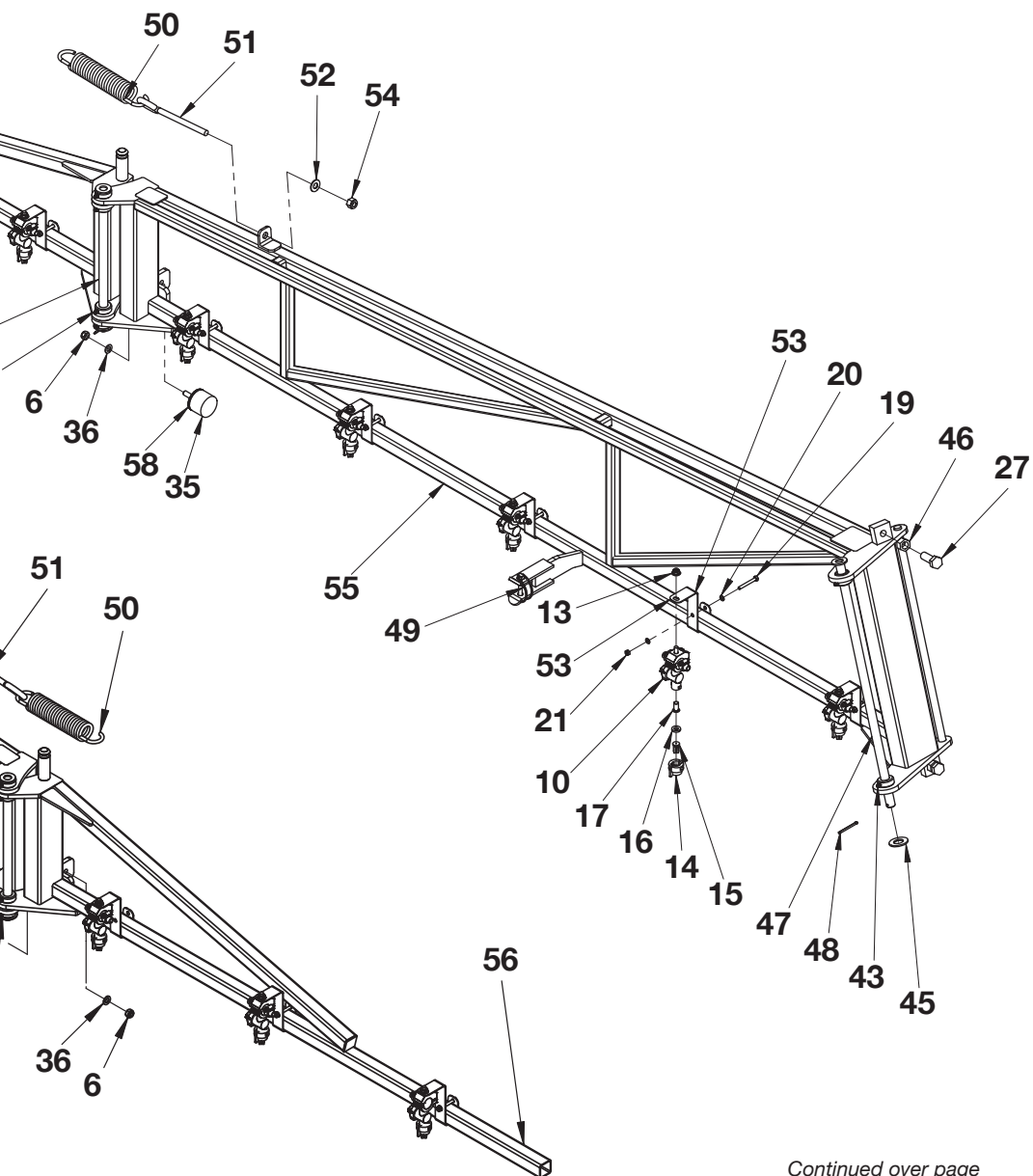
Continued over page

# 10M Boom Twin Link Levelling Manual Fold

GA4900111-MF-TL



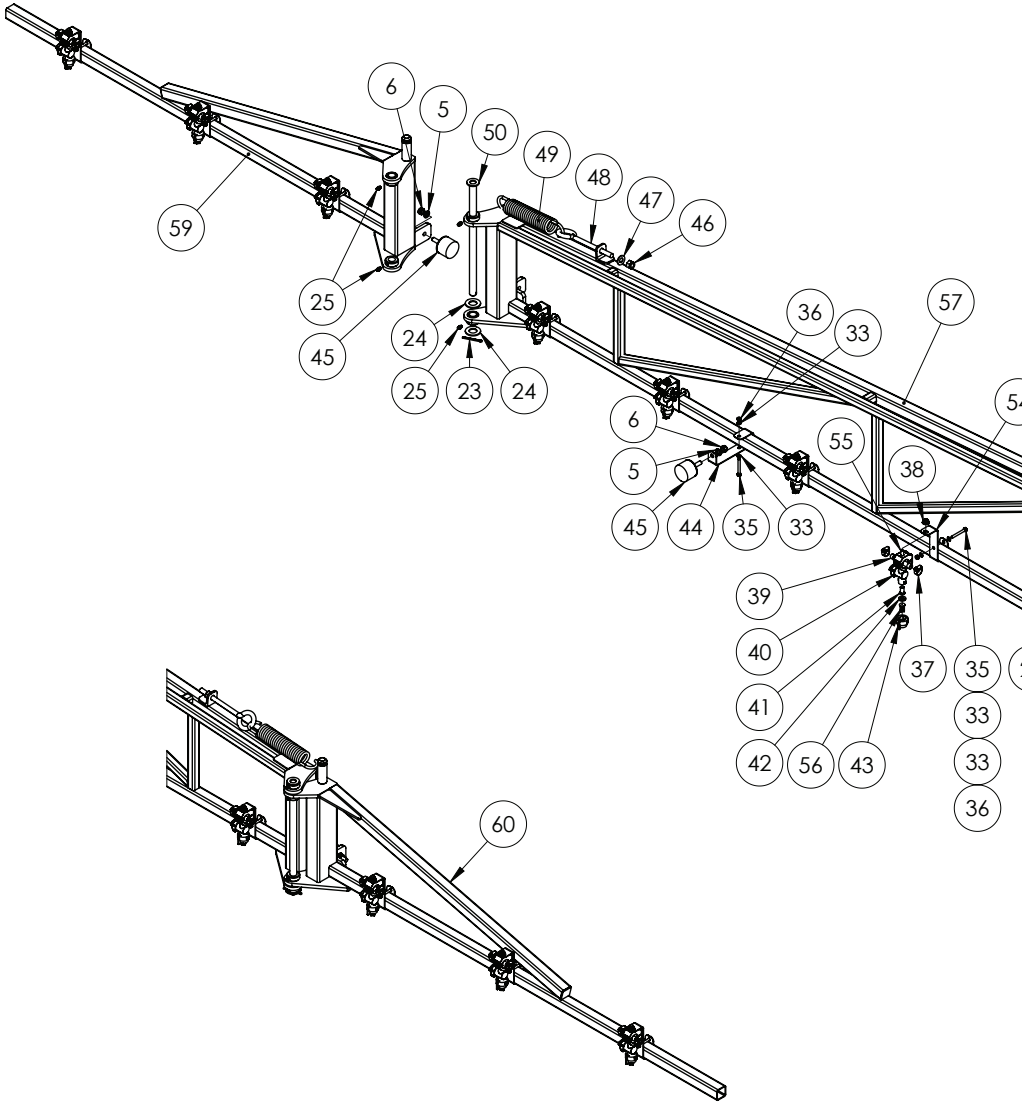
Pos.	Part No.	Description	Qty.
59	GA5077497	Hose barb suit nozzle body, Single ½", Nylon, Teejet, CP38936-NYB	1
60	GA4656085	Boom outer twin link 10m LH	2
61	GA5001055	Washer 16mm Flat SS	1

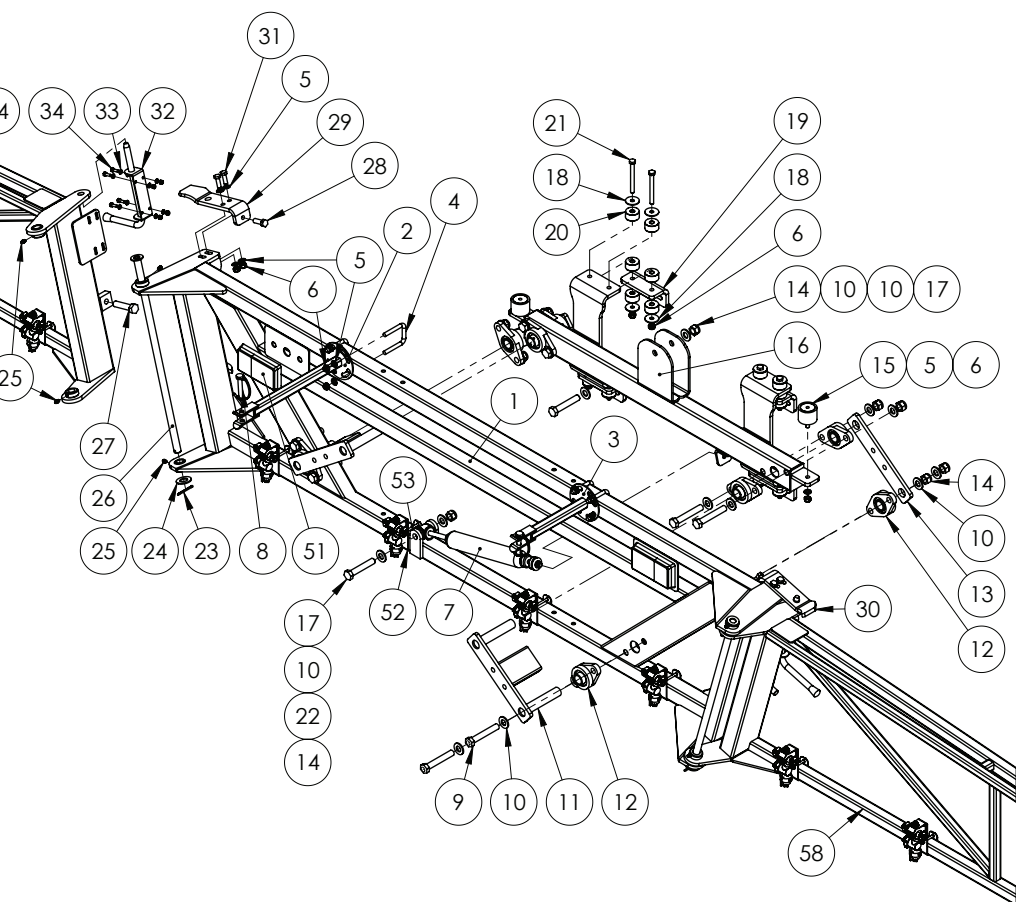


*Continued over page*

# 10M Boom Twin Link Levelling Manual Fold

GA4908480





*Continued over page*



# 10M Boom Twin Link Levelling Manual Fold

GA4908480

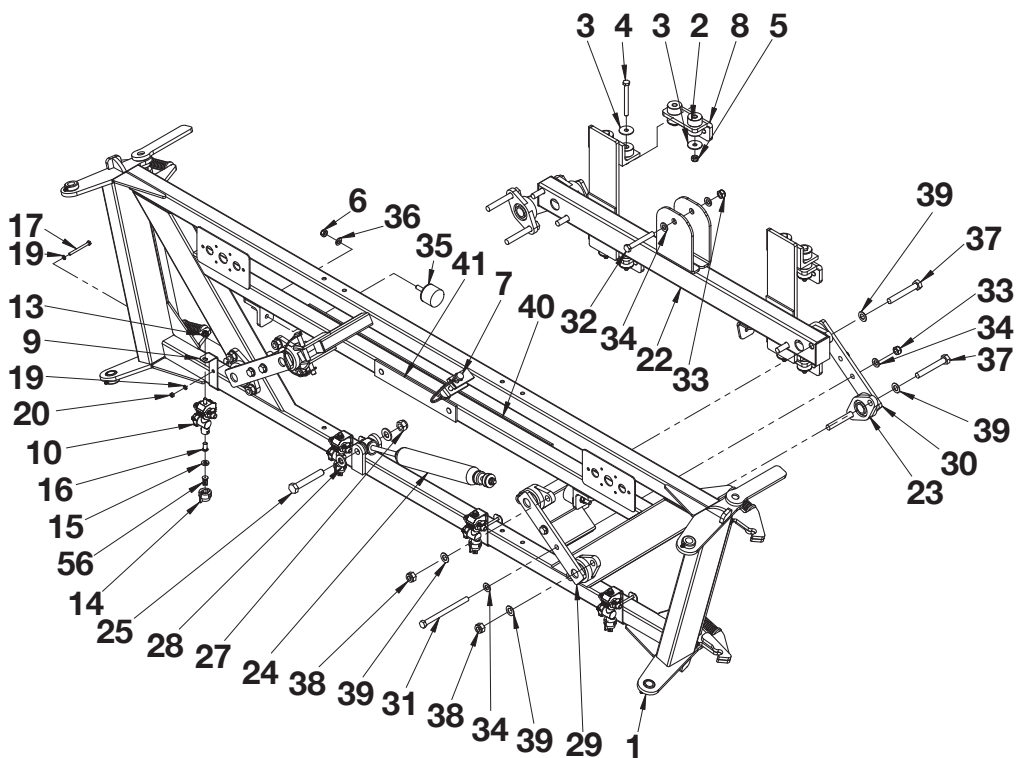
Pos.	Part No.	Description	Qty.
1	GA4661775	Boom centre twin link 10/12m	1
2	GA4661730	Boom, Catch, 340mm Long	1
3	GA4661765	Boom, Catch, 220mm long	1
4	GA5053645	U bolt Square top M10 x 52 x 75	4
5	GA5000117	Washer 10mm Flat SS HD	22
6	GA5000141	Nut M10 Nyloc ZP	26
7	GA5015899	Steering Damper SC2914	1
8	GA5010903	Linch pin, 3/8" OD pin, R40 half round clip	2
9	GA5011269	Set Screw M16	8
10	GA5001043	Washer 16mm Flat SS HD	19
11	GA4655620	Boom twin link arm for 10/12m	2
12	GA5016935	Bearing assembly with 2 bolt flanged housing, UC205-16 bearing & FL205 housing	8
13	12TLB018LAS	Twin link arm main plate	2
14	GA5001029	Nut M16 Nyloc ZP	10
15	GA5014609	Rubber multicushion	2
16	GA4655625	Boom twin link sus for 10/12m	1
17	GA5011297	Bolt M16 x 90 GR8.8 ZP	2
18	GA5002595	Washer, 3/8" x 1 1/2" OD, Flat SS	16
19	GA4513470	Rubber bush mtg for boom susp	4
20	GA5006577	Bushing poly red 38 OD x 12 ID mm	24
21	GA5006091	Bolt M10 x 100 GR8.8 ZP	8
22	GA5001009	Washer 16mm Flat ZP HD	1
23	GA5015681	Split Cotter Pin M4 x 50 ZP	4
24	GA5001045	Washer 3/4" Flat ZP	6
25	GA5012203	Grease Nipple 1/4" UNF Short	16
26	GA4653575	Inner pivot pin	2
27	GA5000949	Bolt M16 x 70 GR8.8 ZP	2
28	GA5000311	Set Screw M12 x 35 GR 8.8 ZP	2
29	GA4504760	Plate, Crossover Boom, Adjustable latch, LH	1
30	GA4504755	Plate, Crossover Boom, Adjustable latch, RH	1
31	GA5065455	Bolt M10 x 30 GR8.8 ZP	4
32	GA5073240	16mm Sprong Loaded Pad Bolt	2
33	GA5004437	Washer 6mm Flat SS	60
34	GA5004065	Bolt M6 x 20 GR8.8 ZP	8
35	GA5004091	Bolt M6 x 50 GR8.8 ZP	18
36	GA5048115	Nut M6 Nyloc ZP	30
37	GA5000469	Hose clamp, 1/2", SS	40
38	GA5070710	Nut with flange, Plastic, M8 x 1.25	20
39	GA5077498	Joiner, Double hose barb, 1/2"	20
40	GA5077964	Nozzle body, Single, 3/4", Teejet	20
41	GA5077159	Filter, Nozzle tip, 50 mesh, Polypropylene & SS	20
42	GA5055245	Washer, Nozzle Cap Seal, Rubber, 19 OD x 9 mm ID	20
43	GA8100464	Nozzle cap, Black	20
44	F70269A	Trijet nozzle bracket to suit 35x35RHS (2mm S/S)	2
45	GA5052815	Rubber Stopper, Diameter 50 x 35 mm Long, With M10 x 35 Stud	4

<b>Pos.</b>	<b>Part No.</b>	<b>Description</b>	<b>Qty.</b>
46	GA5050580	Nut 1/2" UNC Nyloc ZP	2
47	GA5017673	Washer 1/2" Flat ZP HD	2
48	GA5048615	Bolt M12 x 220 Eye Bolt	2
49	GA5006345	Spring small boom 120H	2
50	GA4653580	Outer pivot pin twin link boom	2
51	GA5006415	Lamp, LED, 12V, Brake / Tail light / Indicator, 150 x 80 mm	2
52	F70246A	Bracket, Nozzle, SS, Suit 50 x 50 mm RHS	4
53	GA5004107	Bolt M6 x 70 GR8.8 ZP	4
54	F70248A	35x35 mm single line nozzle bracket	16
55	GA5004085	Bolt M8 x 20 GR8.8 ZP	20
56	GA8100020	Nozzle Tip, Air Injector Compact IDK 120-02, Yellow, Polymer	20
57	GA4661785	Boom, Wing, Inner, LH, Twinlink	1
58	GA4661780	Boom, Wing, Inner, RH, Twinlink	1
59	GA4656085	Boom outer twin link 10m LH	1
60	GA4656080	Boom outer twin link 10m RH	1

# 12M Boom Twin Link Levelling Manual Fold

GA4900117-MF-TL

Pos.	Part No.	Description	Qty.
1	GA4653185	Boom centre twin link 10/12m	1
2	GA5006577	Bushing poly red 38 OD x 12 ID	24
3	GA5002595	Washer, 3/8" x 1 1/2" OD, Flat SS	16
4	GA5006091	Bolt M10 x 100 GR8.8 ZP	8
5	GA5000141	Nut M10 Nyloc ZP	10
6	GA5051445	Nut M10 Nyloc SS	2
7	GA5048380	Pin shaft locking 11mm	2
8	GA4513470	Rubber bush mtg for boom susp	4
9	F70246A	Bracket, Nozzle, SS, Suit 50 x 50 RHS	4
10	GA5077964	Nozzle body, Single, 3/4", Teejet, QJ17560A-3/4-NYB	22
11	GA5077498	Joiner, Double hose barb, 1/2", CP38937-NYB	24
12	GA5004085	Bolt M8 x 20 GR8.8 ZP	24
13	GA5070710	Nut with flange, Plastic, M8 x 1.25	24
14	GA8100464	Nozzle cap, Nylon, Black, Teejet, Suit flat spray smaller capacity nozzles (up to 08), CP25611-1-NY	24
15	GA5055245	Washer, Nozzle Cap Seal, Rubber, 19 OD x 9 ID, Suit Tee Jet	24
16	GA5077159	Nozzle, Replaces CP19438-EPR Filter, Nozzle tip, Red, 50 mesh, Polypropylene & SS, Teejet, 8079-PP-50	24
17	GA5004107	Bolt M6 x 70 GR8.8 ZP	4
18	GA5004091	Bolt M6 x 50 GR8.8 ZP	20
19	GA5004437	Washer 6mm Flat SS	48
20	GA5048115	Nut M6 Nyloc ZP	24
21	GA5000469	Hose clamp, 1/2", SS	46
22	GA4655625	Boom twin link sus for 10/12m	1
23	GA5016935	Bearing assembly with 2 bolt flanged housing, UC205-16 bearing & FL205 housing	8
24	GA5015899	Steering Damper SC2914	1
25	GA5011269	Bolt M16 x 100 GR8.8 ZP	1
26	GA5000931	Bolt M16 x 50 GR8.8 ZP	4
27	GA5001029	Nut M16 Nyloc ZP	1
28	GA5001009	Washer 16mm Flat ZP HD	2
29	GA4655620	Boom twin link arm for 10/12m	2
30	12TLB018LAS	Twin link arm main plate	2
31	GA5000277	Bolt M12 x 160 GR8.8 ZP	4
32	GA5011263	Bolt M12 x 90 GR8.8 ZP	1
33	GA5012461	Nut M12 Nyloc ZP	5
34	GA5000577	Washer 12mm Flat SS HD	10
35	GA5052815	Rubber Stopper, Diameter 50 x 35 Long, With M10 x 35 Stud	4
36	GA5000117	Washer 10mm Flat SS HD	4
37	GA5000699	Bolt M14 x 100 GR8.8 ZP	8
38	GA5012427	Nut M14 Nyloc ZP	8
39	GA5050325	Washer 14mm Flat SS	16
40	GA5072195	Plastic Wear Strip Boom Rest Polystone 7000SR 50 x 5 x 900	1
41	GA5072200	Plastic Wear Strip Boom Rest Polystone 7000SR 50 x 5 x 300	1
42	GA5005119	Rivet Blind 4.8 x 30	6

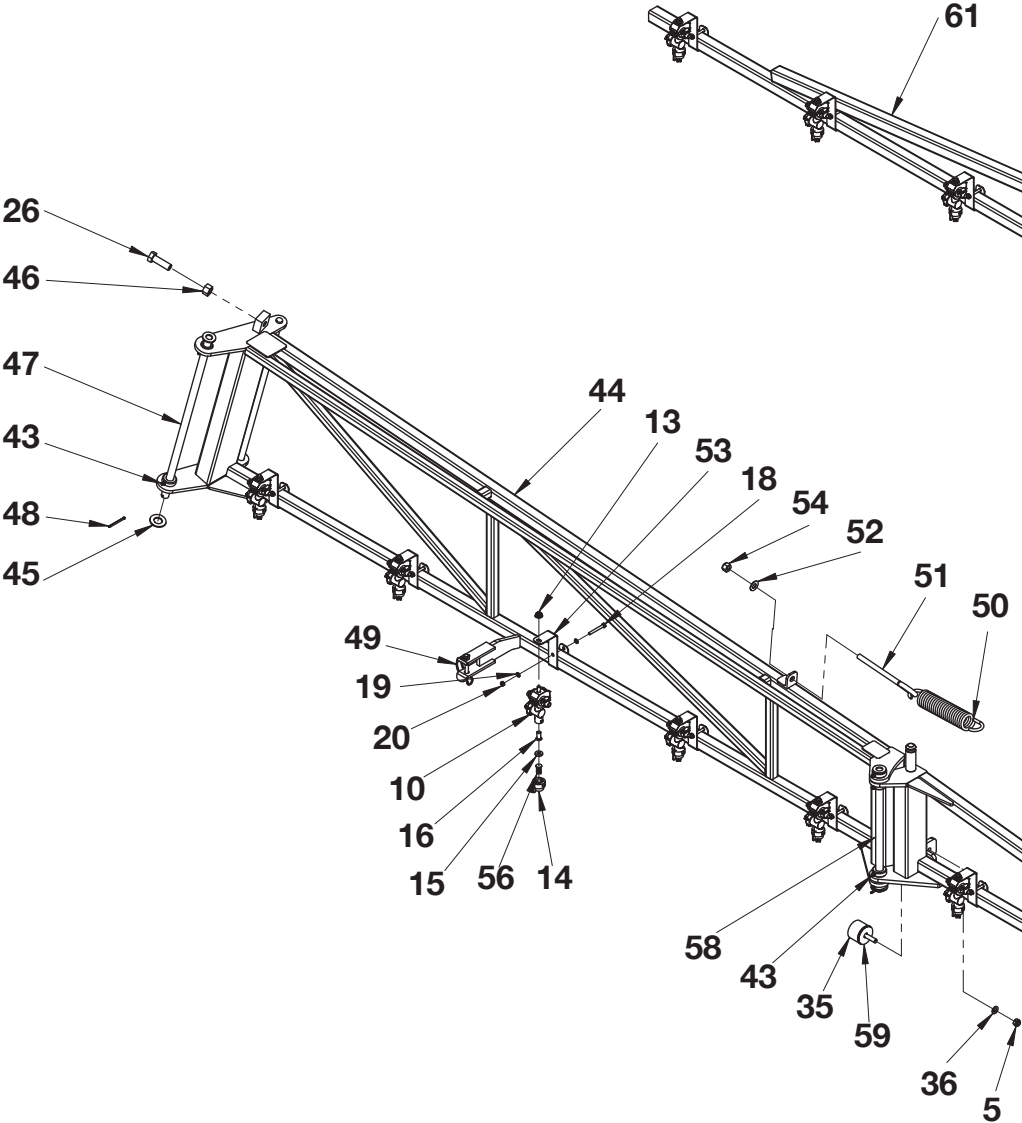


Pos.	Part No.	Description	Qty.
43	GA5012203	Grease Nipple ¼" UNF Short	16
44	GA4655870	Boom inner twin link 10/12m RH	1
45	GA5001045	Washer ¾" Flat ZP	8
46	GA5012385	Nut ZP M16	4
47	GA4653575	Inner pivot pin	2
48	GA5015681	Split Cotter Pin M4 x 50 ZP	2
49	GA5013003	Linch Pin 5/16 Round (Half)	2
50	GA5006345	Spring small boom 120H	2
51	GA5048615	Bolt M12 x 220 Eye Bolt	20
52	GA5017673	Washer ½" Flat ZP HD	2
53	F70269A	Trijet noz brkto suit 35x35RHS (2mm S/S)	1
54	GA5050580	Nut ½" UNC Nyloc ZP	24
55	GA4655875	Boom inner twin link 10/12m LH	1
56	GA8100020	Nozzle Tip, Air Injector Compact IDK 120-02, Yellow, Polymer, Lechler	2
57	GA4656090	Boom outer twin link 12m RH	8
58	GA4653580	Outer pivot pin twin link boom	1
59	GA4655875	Boom inner twin link 10/12m LH	2

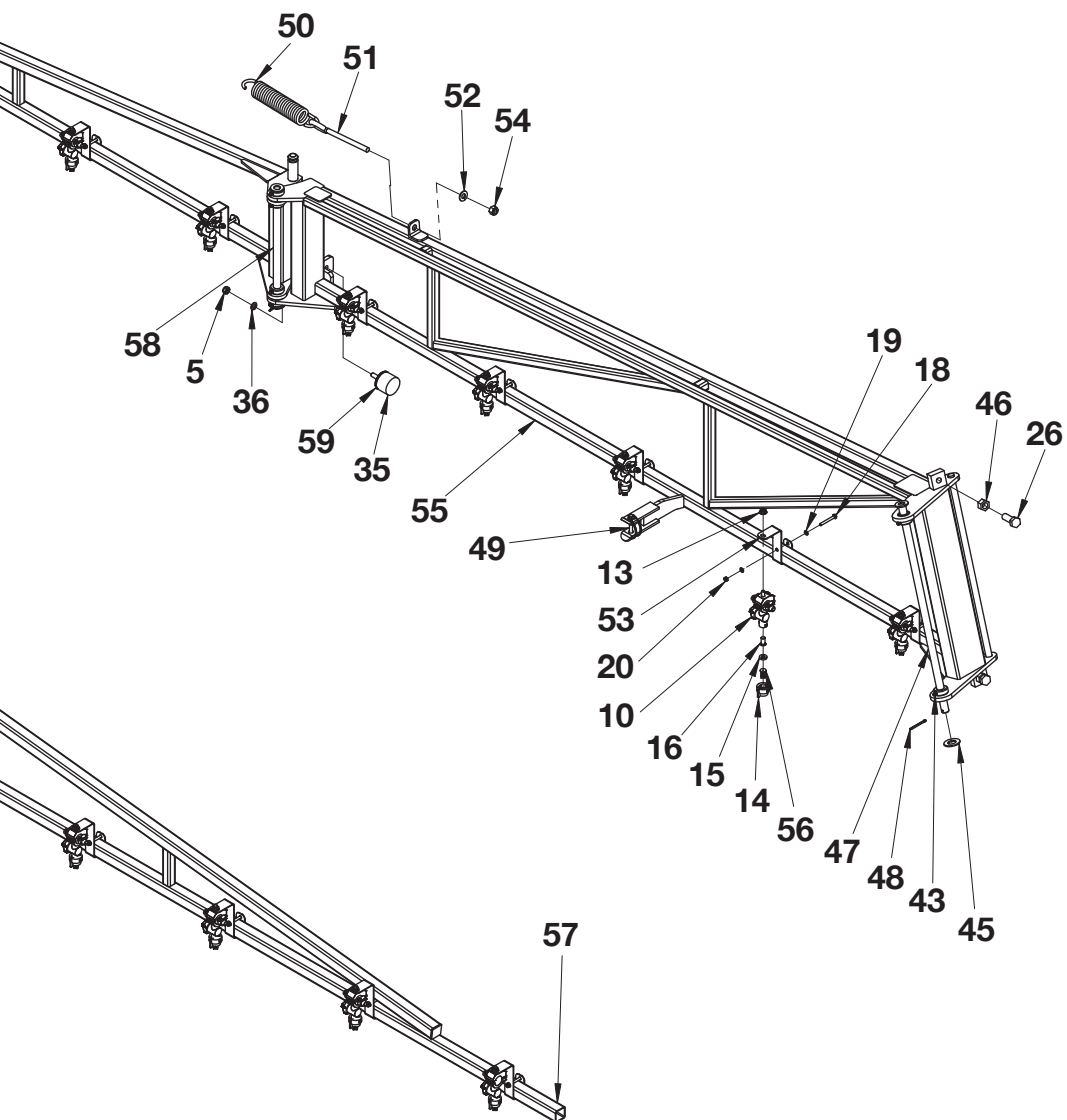
Continued over page

# 12M Boom Twin Link Levelling Manual Fold

GA4900117-MF-TL

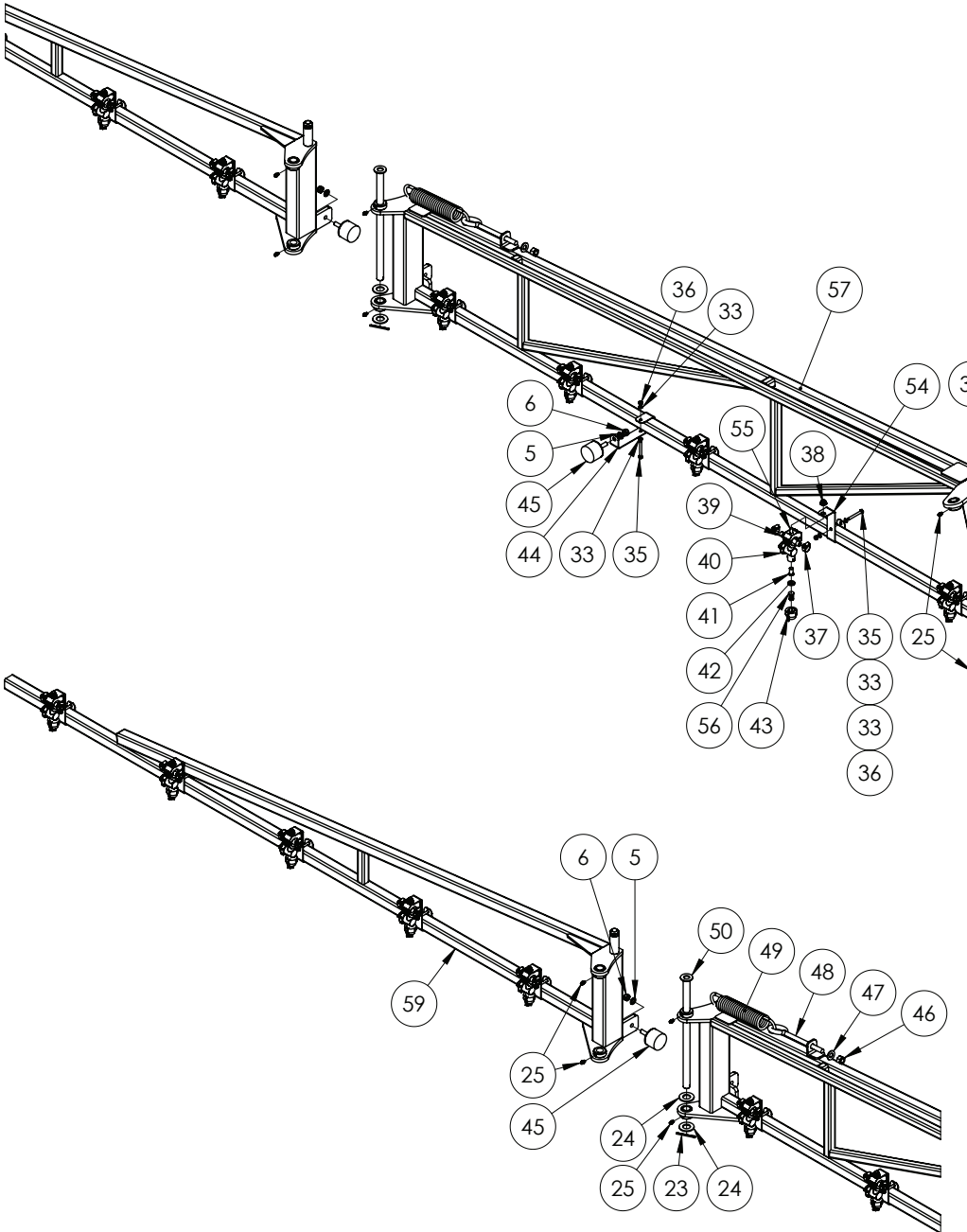


Pos.	Part No.	Description	Qty.
59	12TLB014LAS	Shim plate suit rubber stopper on twin link boom	8
60	GA5077497	Hose barb suit nozzle body, Single ½", Nylon, Teejet, CP38936-NYB	2
61	GA4656095	Boom outer twin link 12m LH	1

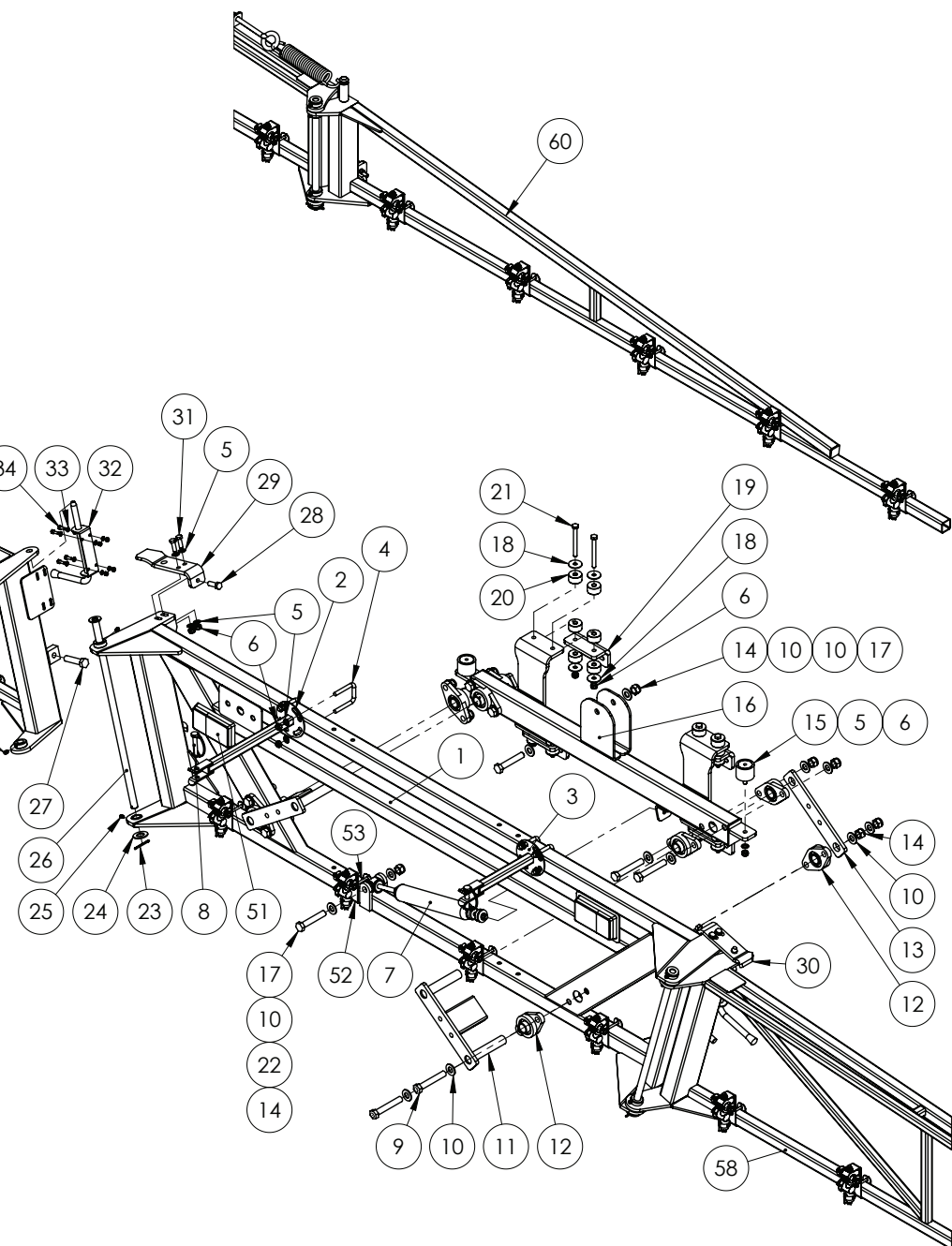


# 12M Boom Twin Link Levelling Manual Fold

GA4908490







Continued over page

# 12M Boom Twin Link Levelling Manual Fold

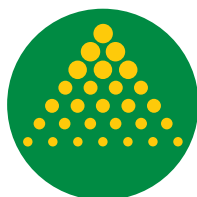
GA4908490

Pos.	Part No.	Description	Qty.
1	GA4661775	Boom centre twin link 10/12m	1
2	GA4661730	Boom, Catch, 340mm Long	1
3	GA4661765	Boom, Catch, 220mm long	1
4	GA5053645	U bolt Square top M10 x 52 x 75	4
5	GA5000117	Washer 10mm Flat SS HD	22
6	GA5000141	Nut M10 Nyloc ZP	26
7	GA5015899	Steering Damper SC2914	1
8	GA5010903	Linch pin, 3/8" OD pin, R40 half round clip	2
9	GA5011269	Set Screw M16	8
10	GA5001043	Washer 16mm Flat SS HD	19
11	GA4655620	Boom twin link arm for 10/12m	2
12	GA5016935	Bearing assembly with 2 bolt flanged housing, UC205-16 bearing & FL205 housing	8
13	12TLB018LAS	Twin link arm main plate	2
14	GA5001029	Nut M16 Nyloc ZP	10
15	GA5014609	Rubber multicushion	2
16	GA4655625	Boom twin link sus for 10/12m	1
17	GA5011297	Bolt M16 x 90 GR8.8 ZP	2
18	GA5002595	Washer, 3/8" x 1 1/2" OD, Flat SS	16
19	GA4513470	Rubber bush mtg for boom susp	4
20	GA5006577	Bushing poly red 38 OD x 12 ID mm	24
21	GA5006091	Bolt M10 x 100 GR8.8 ZP	8
22	GA5001009	Washer 16mm Flat ZP HD	1
23	GA5015681	Split Cotter Pin M4 x 50 ZP	4
24	GA5001045	Washer 3/4" Flat ZP	6
25	GA5012203	Grease Nipple 1/4" UNF Short	16
26	GA4653575	Inner pivot pin	2
27	GA5000949	Bolt M16 x 70 GR8.8 ZP	2
28	GA5000311	Set Screw M12 x 35 GR 8.8 ZP	2
29	GA4504760	Plate, Crossover Boom, Adjustable latch, LH	1
30	GA4504755	Plate, Crossover Boom, Adjustable latch, RH	1
31	GA5065455	Bolt M10 x 30 GR8.8 ZP	4
32	GA5073240	16mm Sprong Loaded Pad Bolt	2
33	GA5004437	Washer 6mm Flat SS	68
34	GA5004065	Bolt M6 x 20 GR8.8 ZP	8
35	GA5004091	Bolt M6 x 50 GR8.8 ZP	22
36	GA5048115	Nut M6 Nyloc ZP	34
37	GA5000469	Hose clamp, 1/2", SS	48
38	GA5070710	Nut with flange, Plastic, M8 x 1.25	24
39	GA5077498	Joiner, Double hose barb, 1/2"	24
40	GA5077964	Nozzle body, Single, 3/4", Teejet	24
41	GA5077159	Filter, Nozzle tip, 50 mesh, Polypropylene & SS	24
42	GA5055245	Washer, Nozzle Cap Seal, Rubber, 19 OD x 9 mm ID	24
43	GA8100464	Nozzle cap, Black	24
44	F70269A	Trijet nozzle bracket to suit 35x35 mm RHS (2mm S/S)	2
45	GA5052815	Rubber Stopper, Diameter 50 x 35 mm Long, With M10 x 35 Stud	4

<b>Pos.</b>	<b>Part No.</b>	<b>Description</b>	<b>Qty.</b>
46	GA5050580	Nut 1/2" UNC Nyloc ZP	2
47	GA5017673	Washer 1/2" Flat ZP HD	2
48	GA5048615	Bolt M12 x 220 Eye Bolt	2
49	GA5006345	Spring small boom 120H	2
50	GA4653580	Outer pivot pin twin link boom	2
51	GA5006415	Lamp, LED, 12V, Brake / Tail light / Indicator, 150 x 80 mm	2
52	F70246A	Bracket, Nozzle, SS, Suit 50 x 50 mm RHS	4
53	GA5004107	Bolt M6 x 70 GR8.8 ZP	4
54	F70248A	35x35 single line nozzle bracket	20
55	GA5004085	Bolt M8 x 20 GR8.8 ZP	24
56	GA8100020	Nozzle Tip, Air Injector Compact IDK 120-02, Yellow, Polymer	24
57	GA4661785	Boom, Wing, Inner, LH, Twinlink	1
58	GA4661780	Boom, Wing, Inner, RH, Twinlink	1
59	GA4656095	Boom outer twin link 12m LH	1
60	GA4656090	Boom outer twin link 12m RH	1

[illegible]

[illegible]



**GOLDACRES**

1-3 Morang Crescent, Mitchell Park Vic 3355

P: 03 5342 6399 F: 03 5342 6308

[info@goldacres.com.au](mailto:info@goldacres.com.au)

[goldacres.com.au](http://goldacres.com.au)