

Traymount T3

Operator's & Parts Manual



Contents

Introduction	3
Safety	4
Goldacres Warranty Statement	9
Terms & Conditions	10
General Information & Specifications.	12
Dimensions.	13
Engine	14
Pump	18
Pump Maintenance	19
Pump Troubleshooting	20
Suction Filter	21
Filling	22
Spray Application	22
Flushing	23
Storage	23
Spray Gun - GunJet AA30L	24
Spray Gun - Nozzle	25
Tank & Frame Assembly	26
Tank Assembly	28
Pump - IOTA 20	30
Gearbox.	31
Suction Filter Assembly.	32
Plumbing Schematic.	33
Notes	34

Contact

Goldacres

1-3 Morang Crescent,

Mitchell Park Vic 3355

P: 03 5342 6399

F: 03 5342 6308

info@goldacres.com.au

Disclaimer

Any advice or recommendations given by Goldacres, Goldacres' dealers, or employees is given in good faith and provided based on the best information available to us. No liability or responsibility is accepted or implied as a result of any information or advice tendered in this operating manual or by Goldacres its agents or employees. The end user accepts all responsibility arising from that advice. No part of this manual may be reproduced without written permission from Goldacres. All photographs and technical information remain the property of Goldacres.

Introduction

Congratulations on your purchase of a Goldacres sprayer. For more than a quarter of a century Goldacres has supplied Australian farmers with quality, innovative and technologically advanced spraying solutions - equipment designed in Australia for Australian conditions.

Goldacres not only produce Australia's finest range of spraying equipment - we also keenly value the unique relationship we enjoy with owners of our equipment. We are pleased to welcome you as a Goldacres owner and look forward to making your spray applications as efficient as possible.

Please use this comprehensive resource to gain a full understanding of your equipment, and don't hesitate to contact your Goldacres Dealer or Goldacres for further information.

A handwritten signature in dark ink, appearing to read 'Roger Richards', with a large, stylized 'S' at the end.

Roger Richards
General Manager

Safety

General

The following pages outline important safety information. At Goldacres safety is a high priority. These safety and warning instructions **MUST** be followed to ensure the safe operation of your Goldacres equipment.

Explanation of key terms used in this operator's manual are:

DANGER - You will be killed or seriously hurt if you don't follow instructions

WARNING - You can be seriously hurt if you don't follow instructions

CAUTION - You can be hurt if you don't follow instructions

NOTE - Is used to notify people of installation, operation or maintenance information that is important but not hazard related.

The Operator

All operators of this equipment should be adequately trained in the safe operation of this equipment. It is important that all operator's have read and fully understand the operators manual prior to using this equipment.

All new operators should be trained in an area without bystanders or obstructions and become familiar with the sprayer prior to operation.

Safety Precautions

WARNINGS

- Keep clear of overhead obstructions.
- **CRUSH HAZARD** - Keep hands clear of moving parts.
- Any unauthorised modifications to this equipment may affect its function and create a serious safety risk.
- Never attempt to clean parts or nozzles, by blowing with mouth.
- Never attempt to siphon chemicals, or substances, by sucking.
- It is imperative that the vehicle manufacturer's specifications be checked and all instructions for use when transporting be adhered to at all times.

- Care should be taken when transferring liquid into the tank to ensure that the gross weight of the equipment does not exceed the carrying, braking and/or towing capacity of the vehicle to which the equipment is attached as specified by the vehicle manufacturer.

NOTE: 1 LITRE WATER = 1KG.

- Water weighs 1kg per litre, however conversion factors must be used when spraying liquids that are heavier or lighter than water. Example: liquid urea has a density of 1.28 kg/L and will therefore be significantly heavier than water if the tank is filled completely.
- Suitable care should be taken when driving with the equipment attached to the vehicle. Consideration should be given to both the carrying capacity of the vehicle and the gradient of the terrain when determining the speed at which the vehicle can be driven safely.
- Ensure that the maximum speed of the vehicle, when loaded, is within the vehicle manufacturers limitations.
- Ensure equipment is securely fastened, or attached to the vehicle at all times.
- Regularly check the pump mounting bolts. The pump will always vibrate to some degree when operating, and this may work the bolts loose.

CAUTIONS

- A supply of fresh water should be with the equipment at all times.
- Standard polyethylene tanks are not designed for use with diesel fuel or any flammable liquid.
- Do not use this machine in ambient temperatures exceeding 40 degrees Celsius.
- Ensure that all bolts are tightened and secured before operation.
- Area surrounding equipment may become slippery when wet.

Continued over page

NOTES

- Always read and understand the operator's manual prior to operation of this equipment.
- It is the responsibility of the operator to ensure that there are no decals missing from the equipment and that any damaged or missing decals are replaced prior to operation.
- Goldacres equipment ordered or operated, outside the guideline limitations may not be warranted by Goldacres for successful performance. Operators working outside these limitations do so at their own risk, unless specific advice has been sought from and provided by Goldacres in writing.
- Always read and follow the chemical manufacturer's guidelines for safe application as per the chemical label. Particular attention should be given to the recommended target application rate of the chemical being applied as per the chemical label.
- Inspect the equipment thoroughly for damage and wear before operation.
- Flush chemicals from equipment immediately after use.
- Certain chemicals may be unsuitable for use with Goldacres standard plumbing designs. Consult your Goldacres dealer if in doubt.
- Do not operate the equipment while under the influence of any drugs, alcohol or if excessively tired.
- Make sure that the equipment complies with all relevant road regulations when transporting.
- When draining fluids from the equipment use appropriate, leak proof containers. Do not use food or beverage containers as someone may consume the contents by mistake.
- After reading the operator's manual if there is any thing that you do not understand please contact your Goldacres dealer.

Safe Chemical Use

The safe use of Ag chemicals with this equipment is the responsibility of the owner/operators. All operators should be trained in the safe use of Ag chemicals. Goldacres suggest that a relevant course is completed by owners/operators prior to operation of this equipment as a spray unit.

Personal Protective Equipment (PPE)

Always wear close fitting clothing and safety equipment designed for the job.

Chemicals can be harmful to humans, appropriate PPE should be used when handling chemicals.

Always refer to the chemical manufacturers label for guidelines on the appropriate PPE to use with the chemicals you are using.

Goldacres also suggest that you read and understand the following Australian standards:

- Australian Standard for Chemical protective clothing AS3765
- Australian Standard for Respiratory protection devices AS1715

Airborne particles

Always stand well clear of equipment during operation. Any spray drift is dangerous and may be hazardous to humans and animals.

Fluids under pressure

Do not disconnect any hoses, nozzles or filters while equipment is operating. Disconnecting these components while under pressure may result in uncontrolled fluid discharge which may be hazardous.

When the repair is complete ensure that all fittings and lines are secured before re-applying pressure.

Continued over page

Cuts, Stabs & Punctures

When Servicing machine, be mindful of sharp edges on parts such as trimmed cable ties, hose clamps, cut reinforced hose and the edges of plates and brackets as they could cause cut, stab or puncture injuries.

ATV Safety

- Consult your ATV operator's manual before mounting this sprayer.
- Do not fit the spray tank to the front of your ATV.
- Fully read the Owner's Manual before mounting this spray unit to an ATV or vehicle.
- Before mounting to an ATV or vehicle ensure that fitment complies with weight restrictions as specified by ATV or vehicle manufacturer.
- OVERLOADING the ATV or vehicle, or operating it improperly, may cause an accident, injury or death.
- Do not load the ATV in excess of the load limit capacity of the ATV as recommended by the manufacturer.
- Filling the spray tank when fitted to the ATV will result in changes to the handling and stability of the ATV.
- ATV tyres should be inflated to the manufacturers recommended operating pressures.
- Do not attach other equipment to the ATV spray tank. This may exceed the ATV spray tank's designed capacity and function.
- Reduce speed when operating the ATV spray tank when tank is loaded.
- Allow for greater braking distances when the ATV spray tank is loaded.
- To reduce possible ATV instability it is recommended the ATV be stationary if spot spraying on a slope or hill.
- Ensure the ATV or vehicle complies with all relevant regulations for use on farm or public roads.
- The weight of the unit significantly increases when filled to the maximum recommended level. Remember: 1 litre of water = 1 kilogram.

- The tank should be empty during attachment or removal of the tank from the ATV.
- Do not allow any other person to ride on the ATV at the same time this ATV spray tank is fitted.
- Do not allow use of this sprayer by minors.
- Do not use the sprayer in the vicinity of other people or animals.

DANGER: Failure to adhere to these recommendations or follow these rules may result in injury or death to the operator and/or bystanders.

Anyone involved in the use or operation of the ATV and ATV spray equipment should be aware of, and trained in appropriate safety recommendations including those contained in this manual.

Understanding safety decals and their purpose assists in the safe operation of your sprayer. Safety decals are there for your protection and it is the responsibility of the owner operator to replace damaged and/or missing safety decals.

Regularly review safety decals with operators. It is very important to ensure that all new machine components and replacement parts include current hazard identification decals.

Replacement safety decals can be ordered from all Goldacres dealers.



GOLDACRES

T3



GOLDACRES

T3



GOLDACRES

T3



GOLDACRES



4 1

GAB700008
T3

BASE KIT

WARNING

CHECK FOR OIL LEAKS TO PREVENT SOIL CONTAMINATION. NEVER OPERATE WITHOUT PROPERLY MAINTAINED AND FULLY OIL FILLED. TO AVOID FIRE AND PERSONAL INJURY, ALWAYS WEAR YOUR SAFETY GEAR.

DRAIN ONLY

WARNING

CHECK FOR OIL LEAKS TO PREVENT SOIL CONTAMINATION. NEVER OPERATE WITHOUT PROPERLY MAINTAINED AND FULLY OIL FILLED. TO AVOID FIRE AND PERSONAL INJURY, ALWAYS WEAR YOUR SAFETY GEAR.

DRAIN ONLY

CAUTION

CHECK FOR OIL LEAKS TO PREVENT SOIL CONTAMINATION. NEVER OPERATE WITHOUT PROPERLY MAINTAINED AND FULLY OIL FILLED. TO AVOID FIRE AND PERSONAL INJURY, ALWAYS WEAR YOUR SAFETY GEAR.

DANGER

CAUTION

CHECK FOR OIL LEAKS TO PREVENT SOIL CONTAMINATION. NEVER OPERATE WITHOUT PROPERLY MAINTAINED AND FULLY OIL FILLED. TO AVOID FIRE AND PERSONAL INJURY, ALWAYS WEAR YOUR SAFETY GEAR.

DANGER

HOSE REEL REMOVAL INSTRUCTIONS








GOLDACRES

TRAYMOUNT T3



- 500L tank capacity - rotationally moulded
- Honda GX230
- 20 l/min 290psi diaphragm pump
- 2 way control valve with pressure regulation and adjustable spray valve
- 20m spray gun adjustable nozzle
- 20m hose reel
- 760L x 1168H x 603mm W
- Weight 90kg

GAB500008

Warranty

How to make a warranty claim

In the event of a fault or breakdown with your product, that you believe to be a warranty issue, the following steps must be taken.

1. Ensure that you have read the Operator's Manual and gone through the troubleshooting procedure.
2. If you continue to experience problems then please contact your local authorised Goldacres dealer. They will advise the method of warranty service for your product.

Warranty Duration

Goldacres' standard warranty is 12 months from date of purchase.

Warranty Inclusions

- Chassis
- Steel Boom Components
- Tanks
- Electrical wire and connectors, (non-contaminated)
- Consoles and controllers
- Electrical motors and drivers
- Wheels, tyres and rims
- Pins and bushes*
- Pump housing
- Hydraulics
- Axle frame only
- Shockers and dampeners
- Wire cables
- Springs
- Drive chains*
- Wheel bearings*

*Failure caused by lack of lubrication not covered.

Warranty Exclusions

- Pump diaphragms
- Pump Seals
- Pump check valves
- Pump O-rings

- Filters and filter screens
- Filter O-rings
- Chemical Hoses
- Solenoid Diaphragms
- Hand Gun, lance or wand seals and O-rings
- Consumables, chemicals, fuels
- Items controlled by or fitted to Non Genuine parts or devices
- Contamination or corrosion of components
- Hose reel seal and O-rings
- Pressurised sprayer seals and O-rings
- Belts, couplings
- Adjustment of components
- Brake pads and components
- Globes / Bulbs
- Fuses
- Oil / fluids / filters (Unless contaminated or lost due to a warrantable failure)
- Boom break away tips
- Boom break away hinges
- Boom protectors
- Nozzles
- Nozzle Bodies
- Nozzle Body Brackets
- Nozzle Diaphragms and seals
- Wiper Blades
- Skid plates
- Wear plates
- Damaged items
- Worn or wearing items

Goldacres Warranty Statement

This warranty is the only warranty applicable to Goldacres new products (Products) and to the maximum extent as permitted by law, is expressly in lieu of any other conditions or warranties expressed or implied in relation to the Product.

In Australia, Goldacres Products come with guarantees that cannot be excluded under the Australian Consumer Law. You are entitled to a replacement or refund for a major failure and compensation for any other reasonably foreseeable loss or damage. You are also entitled to have the goods repaired or replaced if the goods fail to be of acceptable quality and the failure does not amount to a major failure.

This Warranty gives you additional protection for your Goldacres product and identifies a preferred approach to resolving warranty claims which will be the quickest and simplest for all parties subject to the exclusions, terms and conditions below.

Goldacres warrants its authorized Dealers who in turn warrants the original purchaser (Owner) that each new Goldacres Product will be free from proven defect in materials and workmanship for twelve (12) months from the date of delivery to the first owner according to conditions outlined herein.

Subject only to legislative obligations to the contrary, Goldacres shall not be liable for incidental or consequential damage resulting from ownership or use of a Product.

Goldacres does not authorize any person to create for it any other obligation or liability in connection with these products.

The repair of the defective Product qualifying under this warranty will be performed without charge for labour and parts by any authorized Goldacres service outlet within a reasonable time following the delivery of the Product, at the cost of the owner, to the service outlet / place of business advised

Goldacres in its absolute discretion may choose to pay the cost of replacement or repair of the product.

If the Product will be repaired or replaced, using parts as supplied by Goldacres, repair may include, at Goldacres discretion, the replacement of parts with functionally equivalent remanufactured, reconditioned or new parts.

Goldacres may request failed parts to be returned to the factory.

Conditions of Warranty Coverage

The warranty covers only conditions resulting directly from defects in workmanship or materials used under normal use and service conditions.

The Warranty is not transferable.

The owner is responsible for the performance of regular maintenance and service as specified in the owner's / operators manual applicable to the

product. Failure to follow regular maintenance as advised may invalidate the warranty.

The owner must provide the Goldacres Dealer with prompt written notice of the defect (within 14 days of it occurring) and allow reasonable time for repair and/or replacement.

Goldacres warranty cover excludes:

- Claims resulting from misuse, use of incompatible chemical or fluids, exceeding the Product's specifications including overloading, impact damage, negligence, accidental damage or failure to perform recommended service or service intervals or use the Product with good care.
- Failure due to faulty or inadequate electrical sources of power. 12 volt power sources must be checked for suitability to operate the product.
- The time taken to remove and re-install warranted parts, products or components fitted to other than Goldacres brand products will not be covered by Goldacres Warranty. Only labour and parts directly attributable to the repair of the Goldacres unit is covered.
- The cleaning of parts or products before or after the warranty repair. Cleaning time is considered a customer expense.
- Any Goldacres Product which has been repaired by other than an authorized Goldacres dealer in a way which, in the sole and absolute judgment of Goldacres, adversely affects its performance or reliability.
- The replacement of maintenance items such as diaphragms, batteries, belts, etc.
- Loss of time, inconvenience, loss of use of the product, liability to third parties or any other consequential damages including damage to crops, profits or revenue, other commercial losses inconvenience or cost of rental or replacement equipment.
- Incidental costs associated with a warranty repair including any travel costs, out of hours labour charges, transportation costs, freight costs or any communications costs.
- Goldacres products purchased at auction or in used condition.

Procedure for claiming:

Claims must be made through a Goldacres Dealer. To make a claim under this Warranty, you should

- Contact your local Goldacres Dealer,
- Phone 1300 301 853 to locate a Goldacres Dealer.

Owners returning products to a Goldacres Dealer will require the original Dealer tax invoice, a copy of the tax invoice or delivery docket and any instruction manuals, information booklets or guides that were shipped with the Product.

Terms & Conditions

Interpretation

1. In terms and conditions:
 - (1) "Goldacres" means Goldacres Trading Pty. Ltd. A.C.N. 061 306 732 trading as Goldacres Agricultural Equipment (its successors and assigns) which is the seller of the Goods;
 - (2) "Purchaser" means the purchaser of the Goods;
 - (3) "Goods" means the products and, if any, the services sold or provided by Goldacres to the Purchaser;
 - (4) "GST Act" and "GST" are given the meanings referred to in a New Tax System (Goods and Services Tax) Act 1999.
 - (5) "PPSA" means the Personal Property Securities Act 2009 (Cth) (as amended);
 - (6) Nothing in these terms and conditions shall be read or applied so as to exclude, restrict or modify or have the effect of excluding, restricting or modifying, any condition, warranty, guarantee, right or remedy implied by law (including the Competition and Consumer Act 2010) and which by law cannot be excluded, restricted or modified.

General

2. (1) The Goods and all other products or services provided by Goldacres are provided subject to these terms and conditions. These terms and conditions and any terms and conditions incorporated herein by virtue of clause 3 hereto shall prevail over all other terms and conditions of the Purchaser or otherwise to the extent of any inconsistency.
- (2) These terms and conditions may not be modified or amended without the expressed written consent of Goldacres endorsed by the Managing Director of Goldacres Trading P/L.

Additional Terms and Conditions

3. From time to time Goldacres may provide additional or extended warranties in respect of certain goods and/or services. Where such additional or extended warranties are provided to a Purchaser in writing they will be incorporated into these terms and conditions provided that in the event of any inconsistency between these terms and conditions and the terms of any additional or extended warranty, the provisions of the additional or extended warranty shall prevail.

Goldacres quotations.

4. Unless previously withdrawn, Goldacres quotations are open for acceptance within the period stated therein or, when no period is stated, with 14 days only of the quotation date. Goldacres reserves the right to refuse any order based on any quotation within 7 days of receipt of the order.

Packing

5. The cost of any special packing and packing materials used in relation to the Goods shall be at the Purchaser's expense notwithstanding that such cost may have been omitted from any quotation.

Shortage

6. The Purchaser waives any claim for shortage of any Goods delivered if a claim in respect thereof has not been lodged with Goldacres within (7) seven days from the date of receipt of the Goods by the Purchaser.

Specifications, etc: Catalogues, etc: Quantities

7. All specifications, (including but not limited to: drawings, particulars of weights, volumes, capacities, dimensions, load factors) are approximate only and any deviation shall not be taken to vitiate any contract with Goldacres or form any claim against Goldacres. The descriptions, illustrations, and performances contained in catalogues, price lists and other advertising matter do not form part of the contract of sale of the Goods. Where specifications, drawings or other particulars are supplied by the Purchaser, Goldacres' price is made on estimates of quantities required. Should there be any adjustments in quantities above or below the quantities estimated by Goldacres and set out in a quotation, then any such increase or decrease shall be adjusted on a unit rate basis according to unit prices set out in the quotation.

Performance, Capacities, Chemicals, Liquids, Application Methods, Environmental Effects

8. Any performance, volumes, and/or capacity figures given by Goldacres are estimates only. Goldacres shall be under no liability for damages for failure to obtain such figures unless specifically guaranteed in writing and any such written guarantee shall be subject to the recognised tolerances applicable to such figures. The suitability of chemicals and other liquids for any application and the application methods and the environmental effects shall be the sole decision and responsibility of the Purchaser and the user of the Goods. Goldacres gives no warranty as to the suitability of any chemicals or other liquids for any application, nor the application methods nor the environmental effects, which may result from the use of the Goods. Goldacres shall be under no liability for damages arising out of the use of any chemicals, liquids, or mixtures in the Goods nor for any application, nor for the application methods nor for the environmental effects, which may result from the use of the Goods.

Delivery/Service Times

9. The delivery times and service times made known to the Purchaser are estimates only and Goldacres shall not be liable for late delivery, non-delivery or delay and under no circumstances shall Goldacres be liable for any loss, damage or delay occasioned by the Purchaser or its customers arising from the late or non-delivery or late installation of the Goods.

Loss or damage in transit

10. Goldacres is not responsible for any loss or damage to Goods in transit. Goldacres shall render the Purchaser such assistance as may be necessary to press claims on carriers provided that the Purchaser shall have notified Goldacres and the carriers immediately the loss or damage is discovered on receipt of Goods and shall lodge a claim on the carrier within three days of the date of receipt of the Goods. Insurance of Goods in transit is the responsibility of the Purchaser.

Limit of Liability

11. (1) Goldacres liability for Goods manufactured by it is limited to:
 - (a) where the law implies consumer guarantees into these terms and conditions pursuant to Part 3.2 Division 1 of Schedule 2 to the Competition and Consumer Act 2010 (C'th) ("consumer guarantees") which cannot be excluded and Goldacres breaches a consumer guarantee, the loss and damage the Purchaser is entitled to at law which cannot be excluded by these terms and conditions;

and, in all other cases

- (b) making good any defects by repairing the same or at Goldacres option by replacement within a period not exceeding either 1000 hours or twelve calendar months, whichever comes first, after the Goods have been dispatched provided that:
 - (i) the defects have arisen solely from faulty materials or workmanship;
 - (ii) the Goods have not received maltreatment inattention or interference;
 - (iii) accessories of any kind used by the Purchaser are manufactured or approved by Goldacres;
 - (iv) where applicable, the seals on the Goods remain unbroken;
 - (v) there has been no improper adjustment, calibration or operation;
 - (vi) the use of accessories including consumables, hardware or software (not manufactured by Goldacres) has been approved in writing by Goldacres;
 - (vii) no contamination or leakage has been caused or induced;
 - (viii) any modification to the Goods have been authorised in writing by Goldacres;
 - (ix) there has been no inadequate or incorrect use, storage, handling or application of the Goods;
 - (x) there has been no use or operation of the Goods outside of the physical, electrical or environmental specifications of the Goods;
 - (xi) there has been no inadequate or incorrect site preparations;
 - (xii) there has been no inadequate or improper maintenance of the Goods;
 - (xiii) it has not been caused by fair wear and tear; and
 - (xiv) firstly the Goods have been thoroughly inspected and any damage (from whatever cause) to the Goods (and in particular - the structure, welding, seams, bolts, booms) has been repaired prior to the Goods being operated, used driven or moved and on each occasion the tanks are filled; and
 - (xv) there has been no failure to comply with the requirements of all present or future laws or regulations relating to the Goods and/or the use and/or the operation of the Goods; and there has been no failure to maintain a record of hours of operation (which record shall contain full details of all inspections, repairs and maintenance) and produce same to Goldacres at the time of the claim;
 - (xvii) the defective Goods or any damaged part of the Goods are promptly returned free of cost to Goldacres or a representative of Goldacres;
 - (xviii) all warranty related repairs have been carried out with the prior authorisation of Goldacres;
- (2) If Goods or any part thereof are not manufactured by Goldacres, in particular engines, engine accessories, transmissions, transfer cases, differentials, tyres, tubes, batteries, radios and UHF's, the guarantee of the manufacturer thereof shall be accepted by the Purchaser and is the only guarantee given to the Purchaser in respect of the Goods or that part provided always that this clause does not seek to exclude the consumer guarantees;
- (3) In the case of hydraulic systems, Goldacres shall replace defective parts in accordance with clause 11(1) of these conditions, provided that the failure of the part was not related to contamination within the system. Goldacres shall not be liable for labour in the case of repairing hydraulic system defects;
- (4) Goldacres will not accept liability for damage attributed to fair wear and tear including but not limited to fair wear and tear to nozzles, chains, belts, filters, brake pads, polyethylene bushes and liquid pump valves, valve O-rings, diaphragms and seals;
- (5) Goldacres shall not be liable for and the Purchaser releases Goldacres from any claims in respect of faulty or defective design of any Goods supplied unless such a design has been wholly prepared by Goldacres and the responsibility for any claim has been specifically accepted by Goldacres in writing and in any event Goldacres liability hereunder shall be strictly limited to the replacement of defective parts in accordance with paragraph 11(1) of these conditions provided always that this clause does not seek to exclude the consumer guarantees;
- (6) Except as provided herein, all express and implied warranties, guarantees and conditions under statute or general law as to the merchantability, description, quality, suitability or fitness of the Goods for any purpose or as to design, assembly, installation, materials or workmanship or otherwise are hereby expressly excluded and Goldacres shall not be liable for physical or financial injury, loss or damage or for consequential loss or damage of any kind arising out of the supply, layout, assembly, installation or operation of the Goods or arising out of Goldacres negligence or in any other way whatsoever;
- (7) The benefit of any warranty provided under these terms and conditions shall only be available to the Purchaser and shall not be transferable by the Purchaser;
- (8) The warranties provided under these terms and conditions do not extend to second hand or used Goods that may be sold by Goldacres.
12. Goldacres liability for breach of a consumer guarantee is hereby limited (in the case of goods and services not used for personal, domestic or household purposes) to:
 - (1) in the case of Goods, any one or more of the following:
 - (a) the replacement of the Goods or the supply of equivalent Goods;
 - (b) the repair of the Goods;
 - (c) the payment of the cost of replacing the Goods or acquiring the equivalent Goods;
 - (d) the payment of having the Goods repaired; or
 - (2) in the case of services;
 - (a) the supplying of the services again; or
 - (b) the payment of the cost of having the services supplied again.

Prices

13. (1) Unless otherwise stated in writing by Goldacres, all prices quoted by Goldacres are inclusive of GST for supplies within Australia and exclusive of GST for exports outside of Australia. Prices quoted are those ruling at the time of quotation or the date the price is given and are based on rates of freight, insurance, customs, duties, taxes, exchange, shipping expenses, sorting and stacking charges, cartage, cost of materials and other charges affecting the cost of production ruling on that date and any alterations thereto either before acceptance of or during currency of the contract shall be to the Purchaser's account.
- (2) For the purpose of 38-185 of the GST Act, the day upon which the seller gives the

invoice for the supply shall be the date of the invoice.

Payment

14. (1) The Purchase price in relation to the Goods and the cost of the service shall be payable without deduction and or set off and payment thereof shall be made on or before the thirtieth day of the month following the delivery of the Goods or performance of the services unless other terms of payment are expressly stated in writing.
- (2) A decreasing or increasing adjustment and or the issuing of an adjustment note, pursuant to Division 21 and Division 29-C of the GST Act, shall not, in any way, constitute a release, waiver, and or forgiveness of the debt incurred by the Purchaser.

Interest on overdue payments

15. If Goldacres is not paid for any Goods or services on the due date specified in this agreement without prejudice to any other right or remedy, all outstanding money shall bear interest at the rate set, pursuant to the Penalty Interest Rates Act, Victoria, 1986, as such money, together with interest shall be recoverable forthwith from the Purchaser.

Rights in relation to Goods.

16. (1) At all times until the Debts have been paid in full the Purchaser shall be responsible for any loss or damage occasioned to the supplied Goods howsoever occasioned on a strict liability basis and shall indemnify Goldacres against any such loss or damage and shall insure and keep insured the Goods in the name of both the purchaser and Goldacres against such loss or damage to the full extent of the purchase price and shall provide a copy of such Insurance Policy to Goldacres.
- (2) The Purchaser shall have the right to resell Goods but only as fiduciary agent and trustee for Goldacres by way of bona fide sale at full market value and in the ordinary course of its business.
- (3) Until all the Debts have been paid in full:
 - (a) the Purchaser shall take custody of the Goods as trustee, fiduciary agent and bailee for Goldacres;
 - (b) the Purchaser shall keep the Goods separate from any other goods and properly marked, stored, protected and insured;
 - (c) the Purchaser must hold all of the money it receives ("Proceeds");
 - (i) from the sale of any property into which Goods supplied have been incorporated; and
 - (ii) from the sale of Goods or provision of services including the Goods supplied by the Goldacres as bailee, fiduciary agent and trustee for Goldacres, but the Purchaser need not hold on trust any money exceeding the amount of the Debts at the time the money is received.
 - (d) The Purchaser expressly acknowledges that it is bound by the fiduciary obligation created in the preceding paragraph and acknowledges that:
 - (i) it must hold the Proceeds on trust for Goldacres;
 - (ii) it must place the whole of the Proceeds in an account separate from its own moneys (the "Proceeds Account");
 - (iii) it must maintain the Proceeds Account separate from its own moneys at all times.
 - (iv) it must maintain proper records for the Proceeds Account.
 - (v) it must not assign or encumber any book debts arising from sales made in circumstances set out in clauses 16(c)(i) and (ii) or do any other act in derogation of Goldacres' legal or beneficial interests; and
 - (vi) it must account to Goldacres on demand for all moneys standing to the credit of such account.
 - (e) For the purposes of identification of different consignments of Goods purchased from Goldacres and receipt of Proceeds, the Purchaser agrees that the principle of "Last In, First Out" shall be applied to any items that cannot be distinguished.
 - (f) Goldacres may trace the Proceeds in equity.
 - (4) Goldacres may at any time, without notice to the Purchaser and without prejudice to any other rights which it may have against the Purchaser, terminate any contract connected with the Goods and the bailment referred to in clause 16(3) and enter upon any premises owned or occupied by the Purchaser where Goldacres reasonably believes the Goods may be stored, and repossess the Goods without liability for any damaged caused, and subsequently dispose of the Goods at Goldacres' discretion if:
 - (a) the Debts are not paid in accordance with these terms and conditions or any other contract or arrangement between Goldacres and the Purchaser; or
 - (b) Goldacres receives notice of or reasonably believes that:
 - (i) a third person may attempt to levy execution against the Goods; or
 - (ii) the Purchaser is insolvent (within the meaning of the Corporations Act 2001) or bankrupt; or
 - (iii) the Purchaser has entered into any arrangement or composition with its creditors, gone into liquidation, or has appointed a receiver, a receiver and manager or administrator.
 - (5) If after repossession under clause 16(4) Goldacres sells the Goods, Goldacres shall account to the Purchaser for any proceeds of sale (less expenses of repossession and sale) that exceeds the amount of the outstanding Debts.
 - (6) If any Goods belonging to Goldacres are disposed of by the Purchaser or an insurance claim is made in respect of them, Goldacres shall be entitled to trace the sale or insurance proceeds, which proceeds shall be held by the Purchaser in a separate bank account on trust for Goldacres.
 - (7) The Purchaser agrees and acknowledges that in the event it sells Goods to a third party on account, it will include in its terms and conditions of sale a provision under which the Purchaser retains title to the Goods until such time that the total amount due in respect of the Goods and all monies owing to the Purchaser have been paid in full by that third party debtor. The Purchaser also agrees and acknowledges that in these instances, it will register its PMSI in accordance with the PPSA in respect of its security interest in the Goods.

PPSA provisions

17. (1) The Purchaser acknowledges that these terms and conditions constitute a security agreement for the purposes of section 20 of the PPSA and that a security interest exists in all Goods (and any associated Proceeds from their sale) previously supplied by Goldacres to the Purchaser (if any) and in all in future Goods (and any associated Proceeds from their sale) that may be supplied to the Purchaser by Goldacres.
- (2) The Purchaser acknowledges that Goldacres has a first ranking purchase money security interest ("PMSI") (as defined in section 14 of the PPSA) in the Goods and the Purchaser must not jeopardise such ranking (whether by act or omission).
- (3) The Purchaser acknowledges that it has received value as at the date of first delivery of the Goods and has not agreed to postpone the time for attachment of the security interest (as defined in the PPSA) granted to Goldacres under these terms and conditions.

- (4) The Purchaser will execute documents and do such further acts as may be required by Goldacres to register the security interest granted to Goldacres under these terms and conditions under the PPSA.
- (5) Until ownership of the Goods passes, the Purchaser must not give to Goldacres a written demand or allow any other person to give Goldacres a written demand requiring Goldacres to register a financing change statement under the PPSA in respect of Goldacres' interest in the Goods.
- (6) The Purchaser must indemnify Goldacres and on demand reimburse Goldacres for all costs and expenses incurred by Goldacres in respect of these terms and conditions including but not limited to Goldacres registering its security interest in the Goods, lodging, discharging or amending any financing statement or financing change statement, or otherwise complying with the PPSA.
- (7) The Purchaser agrees (other than as provided in these terms and conditions) not to sell, lease, mortgage, deal with, dispose of or create or attempt to create any other security interest in or affecting the Goods unless and until the Purchaser's Debts have been satisfied.
- (8) The Purchaser waives its rights under the following provisions of Chapter 4 of the PPSA:
 - (a) to receive a notice on enforcement action against liquid assets (section 121(4)),
 - (b) to receive a notice to seize collateral (section 123);
 - (c) to receive a notice of disposal of Goods by Goldacres purchasing the Goods (section 129);
 - (d) to receive a notice to dispose of Goods (section 130);
 - (e) to receive a statement of account following disposal of Goods (section 132(2));
 - (f) to receive a statement of account if no disposal of Goods for each 6 month period (section 132(4));
 - (g) to receive notice of any proposal of Goldacres to retain Goods (section 135(2));
 - (h) to object to any proposal of Goldacres to either retain or dispose of Goods (section 137(2));
 - (i) to redeem the Goods (section 142);
 - (j) to reinstate the security agreement (section 143);
 - (k) to receive a notice of any verification statement (section 157(1) and section 157(3));
- (9) The rights Goldacres may have under the PPSA are supplementary and in addition to those set out in these terms and conditions and do not derogate from the rights and remedies of Goldacres under these terms and conditions or under any other statute or under general law.
- (10) The Purchaser must give 10 business days prior written notice of any proposed change in the Purchaser's name or other identifying characteristics and details.

Purchasers property

18. Any property of the Purchaser under Goldacres' custody or control shall be entirely at the Purchaser's risk as regards loss or damage caused to the property or by it.

Storage

19. Goldacres reserves the right to make a reasonable charge for storage if delivery instructions are not provided by the Purchaser within (14) fourteen days of a request by Goldacres for such information.

Returned Goods

20. Goldacres shall not be under any obligation to accept Goods returned by the Purchaser and will do so only on terms to be agreed in writing in each individual case.

Goods sold

21. All Goods to be supplied by Goldacres shall be described on the purchase order agreed by Goldacres and the Purchaser and the description on such purchase order modified as so agreed shall prevail over other descriptions including any Purchaser's specification or enquiry.

Cancellation

22. No order may be cancelled except with the consent in writing and on terms, which will indemnify Goldacres against all losses.

No waiver

23. The failure of any party to enforce the provisions of these terms and conditions or to exercise any rights expressed in these terms and conditions shall not be a waiver of such provisions or rights and shall not affect the enforcement of this agreement. The exercise by any party of any of its rights expressed in this agreement shall not preclude or prejudice such party from exercising the same or any other rights it may have irrespective of any previous action taken by that party.

Force Majeure

24. If by reason of any fact, circumstance, matter or thing beyond the reasonable control of Goldacres is unable to perform in whole or in part any obligation under these terms and conditions then Goldacres shall be relieved of that obligation under these terms and conditions to the extent and for the period that it is so unable to perform and shall not be liable to the Purchaser in respect of such inability.

Passing of risk

25. Risk in the Goods shall pass to the Purchaser upon delivery of the Goods to the Purchaser or collection of the Goods by the Purchaser's agent or carrier as the case may be.

Exclusion of liability

26. To the extent permitted by law Goldacres shall not be liable to the Purchaser in contract or in tort arising out of, or in connection with, or relating to, the performance of the Goods or any breach of these conditions or any fact, matter or thing relating to the Goods or error (whether or not it is negligent or a breach of contract) in information supplied to the Purchaser or a user before or after the date of the Purchaser's or user's use of the Goods and Goldacres shall be under no liability for damages arising out of the use of any chemicals, liquids, or mixtures in the Goods, nor for any application, not for the application methods nor for the environmental effects, which may result therefrom or from the use of the Goods.

Exclusion of representations and arrangements

27. To the extent permitted by law the terms and conditions supersede and exclude all prior and other discussions, representations (contractual or otherwise) and arrangements relating to the supply of the Goods or any part thereof including, but without limiting the generality of the foregoing, those relating to the performance of the Goods or any part thereof or the results that ought to be expected from using the Goods.

Place of contract

28. The contract for sale of the Goods and the provision of the services is made in the State of Victoria and the Purchaser agrees to submit all disputes arising with Goldacres to the courts of such State and any court competent to hear appeals therefrom.

General Information & Specifications

The T3 sprayer system is ideal for use on the back of an ATV motorbike.

It features an IOTA 20 diaphragm pump with a maximum output of 20L/min at 290 PSI. A pressure regulator and gauge allow control over the spray rate.

The 15 metre hose reel is fitted with a quality pistol grip spray gun with adjustable nozzle. The trailer frame is made of robust RHS steel.

Know Your Sprayer

Getting to know your sprayer prior to operation is crucial in the safe and efficient operation of this equipment. Take the time to familiarise yourself with all the standard and optional components fitted to your sprayer, not only do you need to know where key components are located on your machine you need to become competent in the correct operation of these components prior to spraying operation.

It is also important to become familiar with common spraying methods and common spraying terms prior to using this sprayer for the first time.

Chassis

The chassis is an all steel construction. The chassis is shot blasted, primed and then protected by the Goldacres paint process for excellent chemical resistance and durability.

Tank

All tanks are constructed from UV resistant polyethylene. Polyethylene tanks have a very high chemical resistance.

Due to the rotomoulding process, there can be a variance in the overall dimensions of the tank which in turn results in variations to the tank capacity. For this reason, calibration markings should be used as a guide only.

Filtration

Filtration is a critical part of the sprayer's performance.

A suction filter between the tank and the pump handles filtration. It is important that the filter is cleaned out regularly.

Pump

The pump is critical to any sprayer performance. Correct operation and maintenance of the pump will ensure the sprayer is able to perform to its capabilities.

Always flush pump with clean water after every use. Prolonged chemical contact can severely damage valves, diaphragms and seals.

Do not leave water in pump if sprayer is to be left in a cold environment. The water may freeze and cause damage to pump. Empty pump of all water and cover the pump to ensure this situation does not arise. If this has not been done, and there is a possibility there may be frozen water in the pump, wait until any ice has thawed before using the pump.

Machine limitations

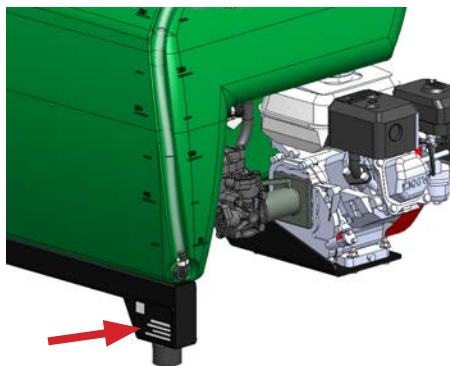
All Goldacres equipment is subject to operating limitations, it is the operator's responsibility to ensure that this equipment is being operated within these limitations and appropriately to the operating conditions at hand.

Paint Colours

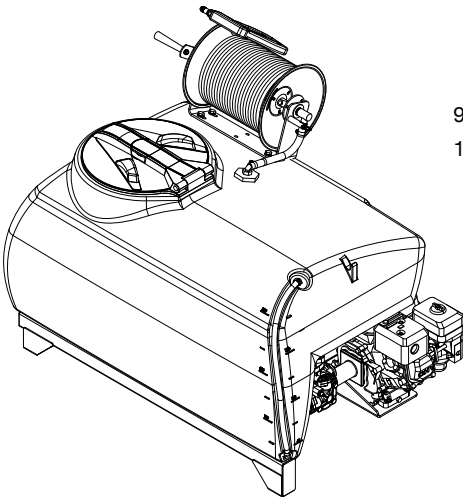
Steel work: N61 Black

Identification

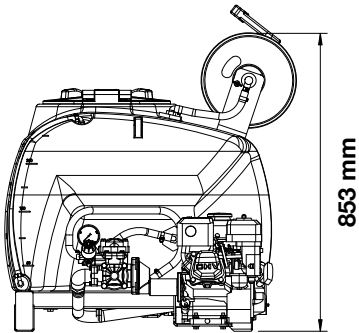
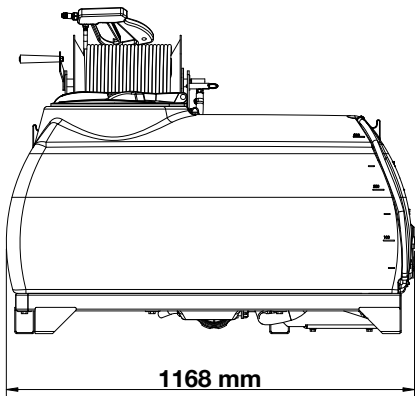
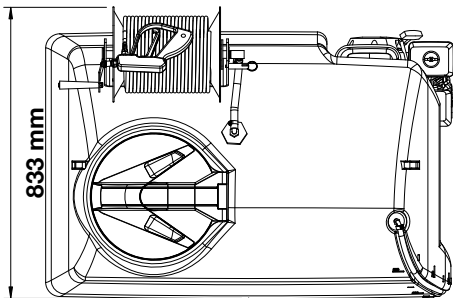
When ordering parts or requesting service information for your sprayer, it is important to quote the serial number and the purchase date of your machine. This will assist with receiving the most accurate information. The location of the stamped ID plate is shown below.



Dimensions



95 kg Dry weight
102 kg Shipping weight



NOTE: Dimensions are approximate only. They may be subject to change without notice.

Engine

The Traymount T3 is fitted with a Honda GX120 motor as standard. It may be optioned with an electric starter. This section provides a basic overview of motor features and operation only. For detailed safety, operating and maintenance instructions specific to this motor consult the Honda owner's manual supplied or find a copy online.

Engine Safety

- Understand the of all controls and learn how to stop the engine quickly in case of emergency.
- Do not allow children to operate the engine. Keep children and pets away from the area of operation.
- Your engine's exhaust emits poisonous carbon monoxide. Do not run the engine without adequate ventilation, and never run the engine indoors.
- The engine and exhaust become very hot during operation. Keep engine away from flammable materials and do not place anything on engine while it is running.

Preoperational Safety Check

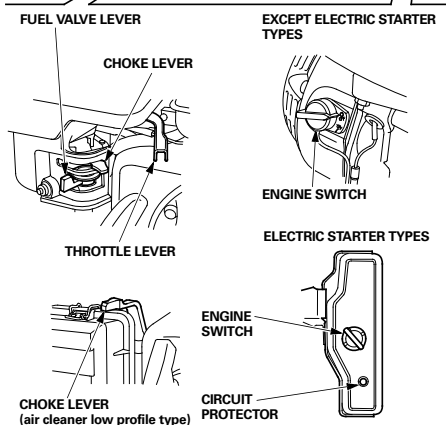
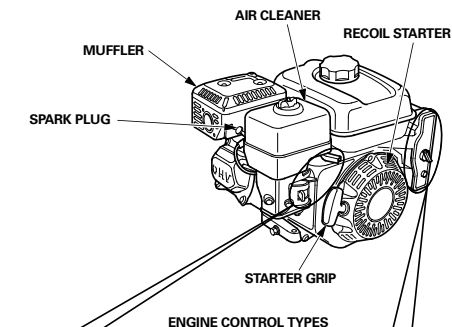
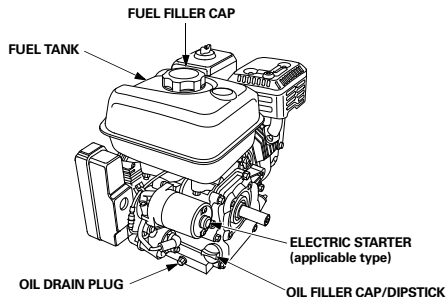
1. Look around the underside of the engine for signs of any oil or fuel leaks.
2. Remove any excessive dirt or debris, especially around the muffler and recoil starter.
3. Look for signs of damage.
4. Check that all shields are in place, and that all nuts, bolts and screws are tightened.

Preoperational Maintenance Check

1. Check engine oil level. Running with low oil can cause damage.

Where fitted, the oil alert system will automatically stop the engine before the oil level becomes critically low.

2. Check reduction gearbox oil level. Sufficient oil level is essential to maximise gearbox life.
3. Check air filter element and clean or replace as necessary to allow clear airflow to the carburetor.

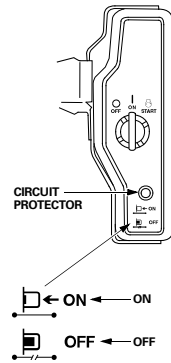


Circuit Protector

If the motor has been optioned with electric start, then it will also have a circuit protector fitted which protects the battery charging circuit. A short circuit, or a battery connected with reverse polarity, will trip the circuit protector.

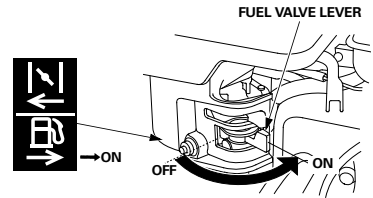
The green indicator inside the circuit protector will pop out to show that the circuit protector has switched off. If this occurs, determine the cause of the problem, and correct it before resetting the circuit protector.

Push the circuit protector button to reset.

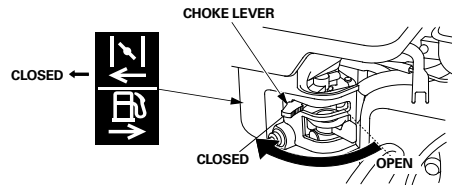


Starting Engine

1. Move the fuel valve lever to the ON position.

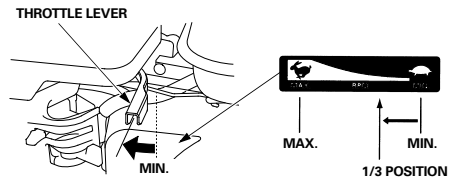


2. If the engine is cold, move the choke lever to the CLOSED position.

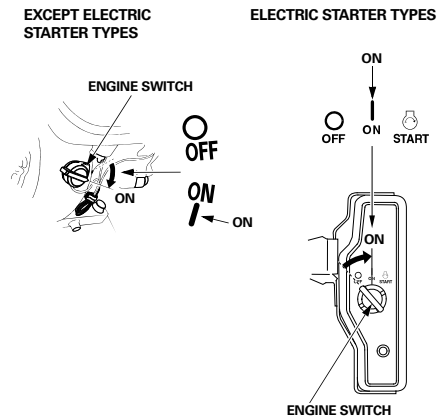


If restarting a warm engine, leave the choke lever in the OPEN position.

3. Move the throttle lever approximately 1/3 of the way from the MIN. position.



4. Turn the engine switch to the ON position.

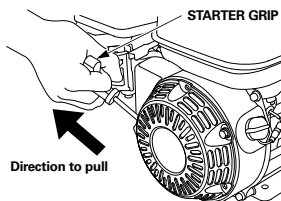


5. Operate the starter:

RECOIL STARTER

- Pull the starter grip lightly until you feel resistance, then pull briskly in the direction of the arrow as shown below. Return the starter grip gently.

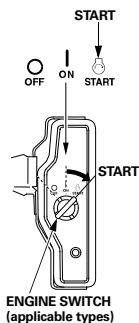
NOTE: Do not allow the starter grip to snap back against the engine. Return it gently to prevent damage to the starter.



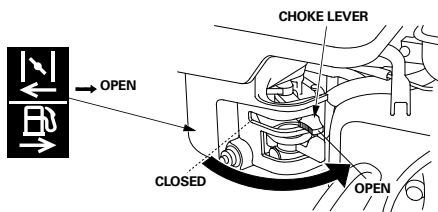
ELECTRIC STARTER

- Turn the key to the START position, and hold it there until the engine starts.
- When it starts, release the key, allowing it to return to the ON position.

NOTE: Using the starter for longer than 5 seconds at a time will overheat the motor and can damage it. This type of overheating is not covered under warranty. If the engine fails to start within 5 seconds, release the key, and wait at least 10 seconds before trying the starter again.



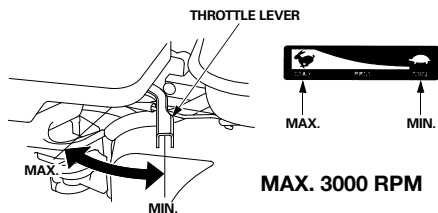
6. If the choke lever was moved to the CLOSED position to start the engine, gradually move it to the OPEN position as the engine warms up.



Setting Engine Speed

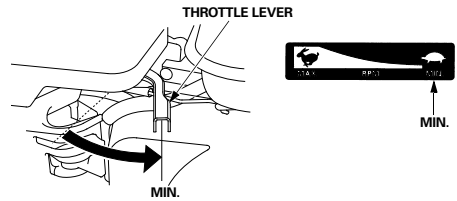
Move the throttle lever to somewhere between the MAX. and MIN. position to set desired engine speed.

NOTE: The reduction gearbox operates at a 5:1 ratio from the engine to the pump. The spray pump speed should not exceed 600 RPM. Therefore the engine should not be allowed to run over 3000 RPM.

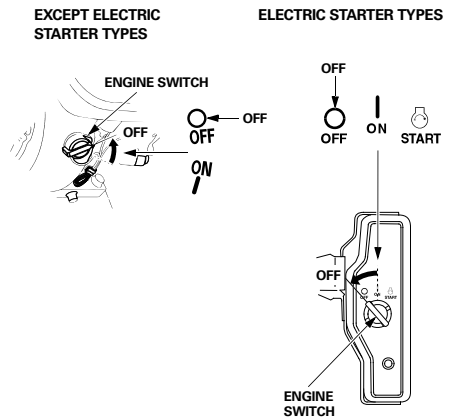


Stopping Engine

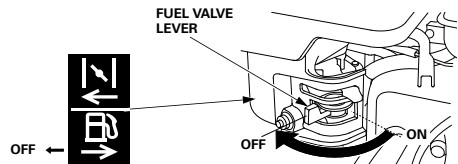
1. Move the throttle lever to the MIN. position.



2. Turn the engine switch to the OFF position.



3. Move the fuel valve lever to the OFF position.



EMERGENCY SHUTDOWN: Turn the engine switch to the OFF position.

The full shutdown procedure should be followed during normal operation.

Pump

Diaphragm pumps are a positive displacement pump that utilise a number of rubber diaphragms and non-return check valves to pump (displace) the fluid. Diaphragm pumps are very well suited to chemical spraying applications. To ensure that you get the most from your pump, follow the information here to use it correctly. Proper operation and periodic maintenance are essential in obtaining the best possible performance from your sprayer over time.

IMPORTANT: Never overfill pump with oil as damage to seals & oil bowl may result. Do not operate diaphragm pumps above 600 RPM.

IMPORTANT: The pump will perform optimally close to, but not over 600 RPM. At speeds much below 600 RPM, excessive pulsation will occur. Speeds above 600 RPM are likely to result in pump and diaphragm damage.

IMPORTANT: Do not leave water in pump if sprayer is to be left in a cold environment. Frozen water inside the pump can cause the housing to crack. Always allow any frozen water inside the pump to thaw before attempting to operate the pump.

PREOPERATIONAL PROCEDURE

1. If sprayer is in a cold environment, make sure that any frozen water present in the pump is thawed before attempting operation to avoid serious damage. Ensure that the pump can be turned over by hand before starting.
2. Inspect all hoses to make sure they are the correct size, fitted securely and that there is no restriction or leaking.
3. Make sure that the pump PTO shaft cover is fitted correctly to prevent accidental injury.
4. Make sure the strainer in the suction filter is clean and correctly installed.
5. Lubricate the PTO shaft according to manufacturer recommendations to prevent the shaft from binding.

6. Change the pump oil after the first 50 hours of operation and then after every 300-350 hours. Use only SAE 30W40 motor oil and do not overfill. Rotate pump manually (by hand) to remove air locks when filling with oil.

WHEN THE PUMP IS OPERATING

- The oil should be visible in the bowl.
- Frequently check the oil level and colour.

NOTE: A change in either colour or level indicates probable damage to diaphragm or valves. **Stop the pump immediately.**

POST OPERATIONAL PROCEDURE

1. Always flush pump with clean water at the end of each spraying day. Prolonged chemical contact can severely damage seals and diaphragms.
2. Do not leave water in pump if sprayer is to be left in a cold environment. Frozen water inside the pump can cause the housing to crack. Empty pump of all water and run it dry for 15-20 seconds. Then cover pump with a bag or similar to keep it protected. If this has not been done and there is a possibility there may be frozen water in the pump and/or in the lines, wait until any ice has completely thawed before using pump again.

Pump Maintenance

The pump diaphragms are wearing components that need to be replaced during the life of the pump. Life expectancy depends upon pump operation and maintenance and task suitability.

MAINTENANCE GUIDELINES

- Pump diaphragms should be replaced prior to diaphragm failure.
- Where the sprayer is used extensively, the pump should be reconditioned once a season, including replacing diaphragms, seals and valve springs.
- It is recommended to keep a spare pump repair kit (including diaphragms, seals, valve o-rings and springs) on hand in case of a breakdown.
- A change of oil colour indicates a pump problem. The oil should be regularly monitored when spraying so that any problem is detected as soon as possible. If the oil goes milky in colour, it is likely the diaphragm has split and the spray mixture has come into contact with the oil. If the oil goes black (or dark grey), it is likely the pump has overheated.

MAIN CAUSES OF PREMATURE DIAPHRAGM FAILURE

- Blocked or incorrectly fitted suction filter restricting flow to the pump.
- Incorrect air damper chamber pressure.
- Running pump at speeds greater than 600 RPM.
- Exceeding the 290 PSI pressure limit of the pump.
- Failure to wash chemicals from pump after use.
- Incompatibility of the diaphragm material and the chemicals used.

DIAPHRAGM REPLACEMENT

When diaphragms require replacement it is normal practice to replace the air damper diaphragm at the same time.

1. Flush pump with clean water to remove chemical residue, then flush with appropriate decontaminating agent (refer to chemical label for decontamination instructions).
2. Run pump dry for 15-20 seconds to remove water.
3. Remove all air from air damper chamber by pushing in air valve.
4. Remove pump from sprayer.
5. Remove pump manifolds and pump heads.

NOTE: Carefully note the position and orientation of all heads, manifolds and valves when disassembling pump. Failure to reassemble correctly will result in severe pump damage.

6. Drain oil from pump.
7. Remove diaphragms.
8. Remove cylinder sleeves.
9. Flush inside of pump with diesel.
10. Visually inspect inner workings of pump.
11. Reassemble with correct new diaphragms only once satisfied with condition of pump.
12. Refill with oil (SAE 30W40). Rotate pump by hand to remove air locks. Do not overfill.

Pump Troubleshooting

The troubleshooting information is provided as a reference when your sprayer is not functioning correctly.

To ensure that you receive the best possible service, it is recommended that you exhaust all applicable troubleshooting solutions shown prior to calling your dealer, or Goldacres, for service advice.

Problem	Common Causes	Common Solution
Pressure and flow rate are too low	Excessive bypass on regulator	Check regulator setting on pump.
	Supply to pump is restricted	Suction filter may be blocked
		Check tank sump and suction line blockages
		Check suction line for air leaks
		Check pump speed
Pressure and flow rate are too high	Bypass from regulator is restricted or blocked	Check oil for colour change. If the oil appears milky, a diaphragm will be damaged and needs to be replaced.
		Check valves in pump.
The pressure on my gauge is higher than the nozzle flow indicates	Blocked filter or nozzle	Check for restriction in bypass
The flow rate is correct but my pressure is too low or high.	Flow loss due to resistance in lines, fittings and/or nozzle.	Adjust pump speed, close to, but no higher than 600 rpm (3000 rpm engine).
Pressure fluctuation	Spray gun nozzle	Check and clean pressure line, fittings and nozzle
	Air leak on suction side of pump	Check nozzle on spray gun for type and fitment
	Incorrect pump speed	Check suction pump for air leaks
Pump pressure pulsating	Faulty pump valves	Adjust pump speed, close to, but no higher than 600 rpm (3000 rpm engine).
	Air accumulator pressure is incorrect	Replace pump valves
	Air accumulator diaphragm has a leak	Add or remove air in accumulator as necessary
	Pump speed too low	Replace air accumulator diaphragm
Pump oil becoming black or dark grey	Air leak on suction side of pump	Adjust pump speed, close to, but no higher than 600 rpm (3000 rpm engine).
	Pump is overheating	Check pump suction for air leaks
Pump is noisy	Low oil level	Check pump speed and oil level
	Air accumulator pressure set incorrectly	Refill or replace oil
	Insufficient lubrication	Recharge air accumulator to specified pressure
	Damaged pump valves	Replace all bearings
	Pump suction line has air leak or is restricted	Replace pump valves
Pump housing or mountings cracked	Extremely cold weather can cause liquid in the pump to freeze and expand	Clean suction filter and check for leaks in suction lines
		Water should be removed from the pump when storing in very cold environments

Suction Filter

It is essential to maintain all filters, and filter screens, in good condition. Filter screens that are not regularly cleaned can severely impede the flow and thus affect delivery pressure.

If the screen is in any way damaged, it can allow foreign material into the pumping system which can result in damage to the pump, lines, valves and nozzle tips. If the screen is not properly fitted, it can allow air into the pumping lines which will reduce the performance of the pump. The filter screen should be cleaned after every spraying operation. The best way to clean the filter screen is with a soft brush or compressed air after washing the entire chemical residue from the pump.

SAFETY SHUT-OFF VALVE

The safety shut off valve enables the filter bowl to be removed while automatically shutting off the supply line to the filter. As the filter bowl is removed together with the bowl cap, the valve plunger seats so as to seal off the filter from the supply line. Replacing the filter bowl unseats the valve plunger and thus opens the supply line to the filter.

SUCTION FILTER CLEANING

WARNING: Appropriate PPE must be worn when cleaning filters.

1. Ensure the pump is turned off.
2. Carefully unscrew filter nut and remove bowl and avoid contact with residual chemical.
3. Remove screen and clean (with a soft brush or compressed air).
4. Check for damage to screen, bowl, body and O-ring.
5. Place screen back in position.
6. Make sure O-ring is in position for proper seal.
7. Replace bowl and screw nut on. Do not over-tighten nut.

Filling

When filling the sprayer it is necessary to use an external water source and wear the appropriate PPE.

The following steps should be followed when filling the tank:

1. With sprayer in the back of ATV, park on level ground.
2. The pump should be turned off.
3. Remove the tank lid.
4. Add 20% of the tanks volume of clean water, or more, if the chemical is in a denser form e.g. powder.
5. Add chemical as required. Some agitation will take place as the rest of the water is added.
6. Use external water source to fill main tank (Do not exceed the tank capacity).
7. Replace the tank lid and ensure that it is secure prior to switching on pump. You are now ready to use the sprayer.

Spray Application

NOTE: It is the responsibility of the operator to ensure that the chemical mix is sufficiently agitated and that the conditions are right to start spraying. Operators must wear the appropriate PPE.

1. Follow the safety check and start up procedure for the pump motor.
2. Start motor.
3. Allow pump to build pressure.
4. It is recommended to set the regulator to maximum pressure (45 PSI) when using the spray gun only. Adjust the regulator if necessary.
5. Engage the trigger on the spray gun to commence spot spraying.
6. Adjust the pressure regulator to raise or lower the spray rate to suit application. This will ensure even and consistent coverage of the target.

NOTE: Refer to your chemical manufacturer's information for determining appropriate spray rates or consult an agronomist for further help.

Agitation should take place when filling or through another method as deemed suitable by the operator.

Flushing

The following information is provided as a general guide for flushing your sprayer after a spray application

For more specific information regarding flushing, and decontamination, specific to the products that you are applying, it is recommended that you consult the chemical label or your chemical supplier.

1. Turn pump off.
2. Drain main tank by opening drain valve.
3. Add a quantity of fresh water to main tank and allow to exit through drain.
4. Close drain valve and add a quantity of fresh water along with decontaminating agents if required to main tank.
5. Turn on pump, and spray fresh water through the spray gun. This will ensure that fresh water has circulated through the pump and gun.
6. Drain remaining contents of fresh water and then re-close drain valve. The sprayer is now ready for storage.

Storage

If the sprayer is to be stored for a long period of time without use, there are several tasks that need to be performed.

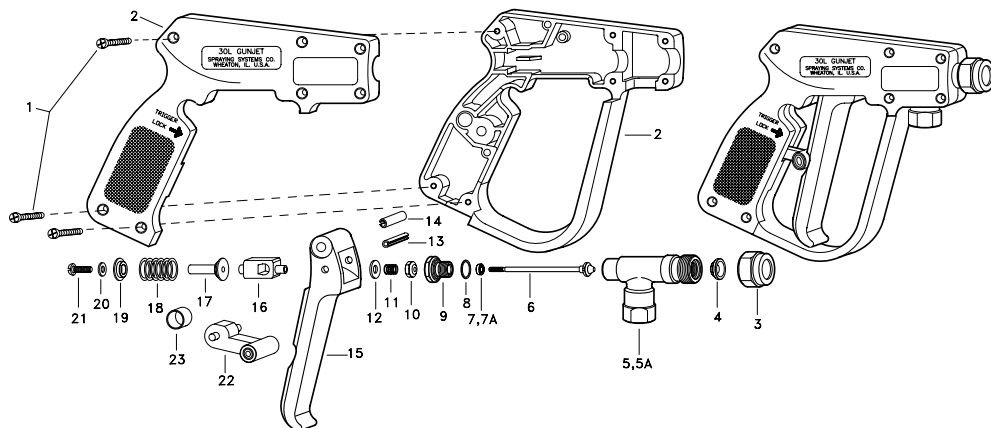
1. Clean the sprayer thoroughly as described under “flushing”
2. Store the sprayer out of direct sunlight and where it will not be affected by frosts
3. Ensure that the main tank is empty
4. Protect hoses and electrical connections

Spray Gun - GunJet AA30L

The gunjet trigger needs to be locked via the trigger lock when not in use to prevent the gunjet from spraying inadvertently.

No. AAB30L-¼, GunJet Spray Gun (BSPT Threads)

AB30L-Kit - Spare Parts Kit (Includes all items marked with * and item 7)

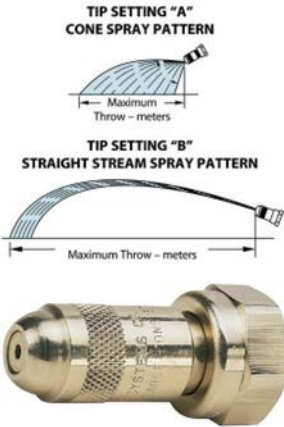


Pos.	Part No.	Description
1	CP17103-11/16-302SS	Screw, Type 302 Stainless Steel (7 Req'd)
2	GA5077414	Right and Left hand Housing Set, Nylon (Black)
3	GA5077610	Cap, Steel, Nickel Plated
4*	GA5077590	Valve Seat, Brass and Teflon
5	GA5077441	Inlet Body, Brass (For Model 30L-¼)
5A	CPB22136	Inlet Body, Brass (For Model B30L-¼)
6*	GA5077442	Stem Sub-Assembly, Brass and Type 302 SS
7	GA5077376	Cup Packing, Buna-N
7A	GA5077377	Cup Packing, Viton
8*	GA5077421	Gasket, Brass
9	GA5077420	Packing Screw, Brass
10	GA5077588	Stem Nut, SS
11	GA5077589	Trigger Stop Spring, Type 302 SS
12	CP7622-302SS	#6 Burr, Type 302 SS
13	GA5077407	Roll Pin, Type 420 SS
14	GA5077427	Roll Pin, Type 420 SS
15	CP17703-NY	Trigger, Nylon (Yellow)
16	GA5077419	Trigger Guide, Brass
17	GA5077423	Spring Guide, Brass
18*	GA5077443	Spring, Type 302 SS
19	GA5077424	Spring Retainer, Brass
20	GA5077426	Washer, Type 18-8 SS
21	GA5077425	Screw, Type 18-8 SS
22	GA5077417	Trigger Lock, Nylon (Yellow)
23	GA5077416	Lock Spring Ring, Celcon

Spray Gun - Nozzle

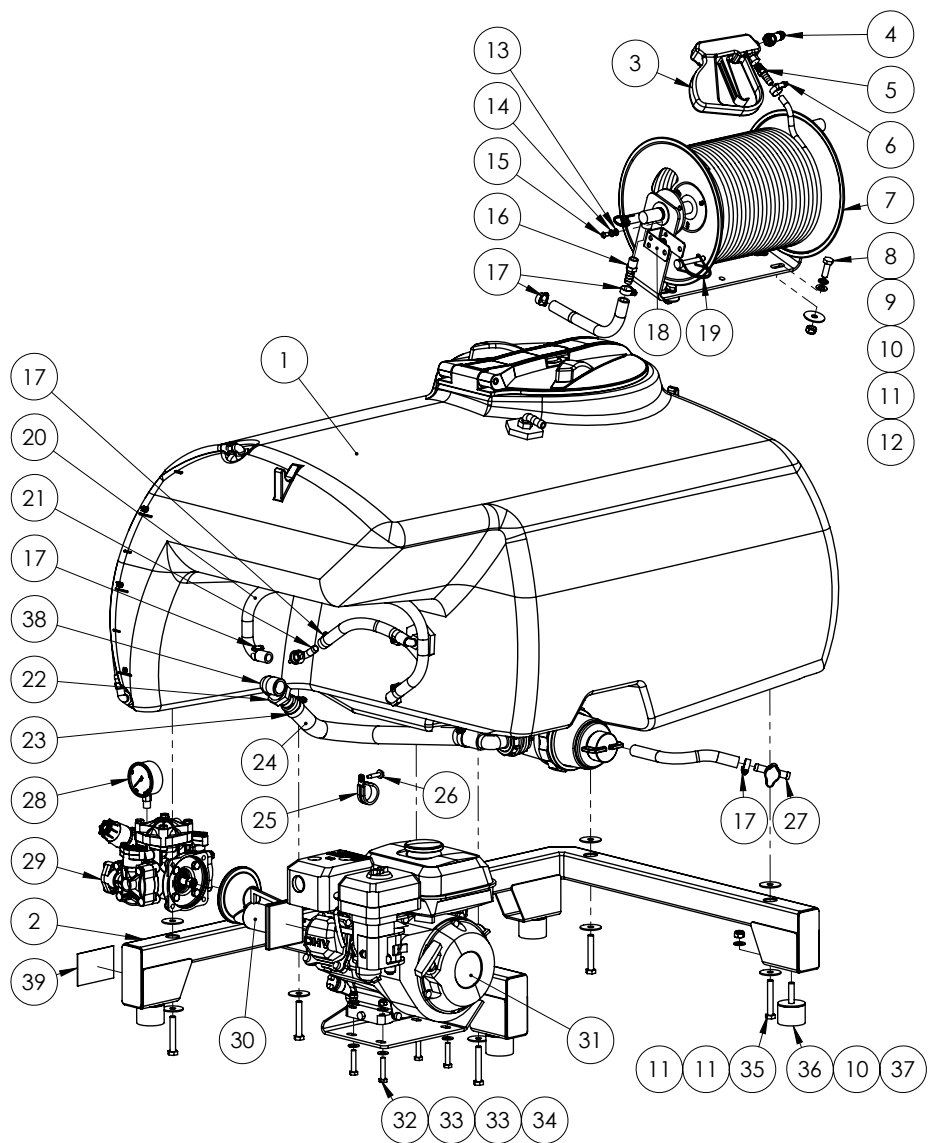
The adjustable brass ConeJet nozzle rotates through a half turn to provide spray selection from wide angle, finely atomized cone spray to a straight stream spray.

NOTE: Tip settings “A” and “B” represent two extreme points of rotation in tip adjustment.



Adjustable ConeJet Tip No.	Performance	Liquid Pressure (bar)							
		1.5		2		3		4	
		A	B	A	B	A	B	A	B
GA8100370 Standard	Capacity—l/min	0.79	2.61	0.98	3.18	1.14	3.67	1.40	4.54
	Spray angle °	71	-	75	-	77	-	78	-
	Max throw m	1.2	11.6	1.2	12.8	1.2	13.3	1.2	13.0
GA8100377	Capacity—l/min	0.98	3.14	1.21	3.79	1.40	4.54	1.70	5.30
	Spray angle °	71	-	75	-	78	-	79	-
	Max throw m	1.2	11.7	1.40	13.0	1.5	13.6	1.5	13.2
GA8100371	Capacity—l/min	1.17	3.71	1.40	4.54	1.63	5.30	2.01	6.43
	Spray angle °	72	-	76	-	78	-	79	-
	Max throw m	1.4	11.6	1.5	13.1	1.5	13.7	1.7	13.3

Tank & Frame Assembly



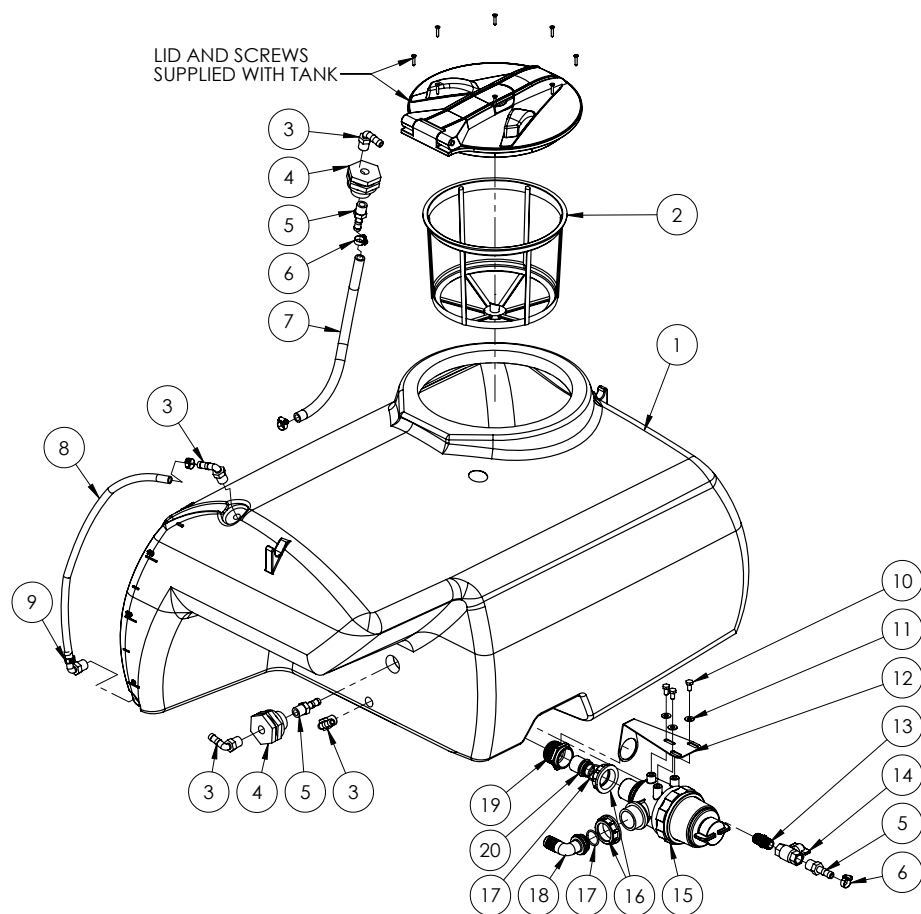
Continued over page

Tank & Frame Assembly

Pos.	Part No.	Description	Qty.
1	GA4914165*	Tank Assembly, 300L	1
2	GA4600690	Frame, Tank, RTV 300L	1
3	GA4900545	Gunjet AA30	1
4	GA8100370	Spray tip, Adjustable ConeJet, Brass, 18, Teejet	1
5	GA5050725	Hose Barb, 1/4" BSPT x 3/8" barb, Brass, P3	1
6	GA5004865	Hose Clamp 8-16mm	1
7	GA5066080	Hose reel, 30m 3/8" hose, manual rewind	1
8	GA5006145	Bolt M10 x 30 SS A2-70	4
9	GA5000137	Washer 10mm Spring SS	4
10	GA5000117	Washer 10mm Flat SS HD	8
11	GA5002595	Washer 3/8" x 1 1/2" x 14g	16
12	GA5051445	Nut M10 Nyloc SS	4
13	GA5004437	Washer 6mm Flat SS	2
14	GA5004447	Washer 6mm Spring SS	2
15	GA5004023	BHCS M6 x 10 SS A2-70	2
16	GA5021070	Hose barb, Straight, 3/8" BSP male x 1/2" hose, Brass	1
17	GA5000469	Hose clamp, 1/2", SS	7
18	GA4402270	Bracket Nozzle suit Traymount	1
19	GA5013003	Pipe lynch pin, 8 OD x 60 mm long	1
20	GA2000211	Hose, Pressure, 12mm, Black, 250psi, HOS13P	1
21	GA5075657	Hose barb, Elbow, 90 degree, 13mm hose, including 1/2" fly nut and seal, Brass	1
22	GA5077715	Hose barb, Straight, 3/4" male thread x 1" hose barb	1
23	GA5016813	Hose Clamp, 1" SS (25-40/12W)	2
24	GA2000220	Hose, Suction, PVC, 25mm, Black	1
25	GA5048090	P-clamp, 35mm	1
26	GA5000707	Tek Screw 14g x 42mm Galvanised	1
27	GA5000681	Valve, Ball, 13mm hose barb inlet & outlet	1
28	GA2000059	Gauge Pressure, Bottom mount, 360psi, 25bar, coloured scale, 63mm Face, 1/4" male thread.	1
29	GA5077765*	Pump, Diaphragm type, Iota 20, Udor	1
30	GA5072715*	UDOR engine / pump reduction box to suit a GX120 Honda engine with a 3/4" shaft	1
31	GA2700064	Honda, GX120, 3.5HP engine 3/4" shaft, pull start	1
32	GA5048655	Bolt M8 x 40 GR8.8 ZP	4
33	GA5003643	Washer 8mm Flat SS HD	8
34	GA5052590	Nut M8 Nyloc SS	4
35	GA5006101	Bolt M10 x 65 GR8.8 ZP	6
36	GA5052815	Rubber Stopper, Diameter 50 x 35 mm Long, With M10 x 35 Stud	4
37	GA5000141	Nut M10 Nyloc ZP	4
38	GA5024215	Elbow, Brass, 3/4" Female x 3/4" Female BSPT	1
39	GA5014955	Serial ID plate, stick on, Goldacres, Black, Unstamped	1

* Sub-assembly shown on following pages.

Tank Assembly



Pos.	Part No.	Description	Qty.
1	GA8500020	Tank, Traymount, 300L, includes black flip lid, MY16	1
	GA5078498	Lid, Hinged, Black plastic, 355mm	-

Continued over page

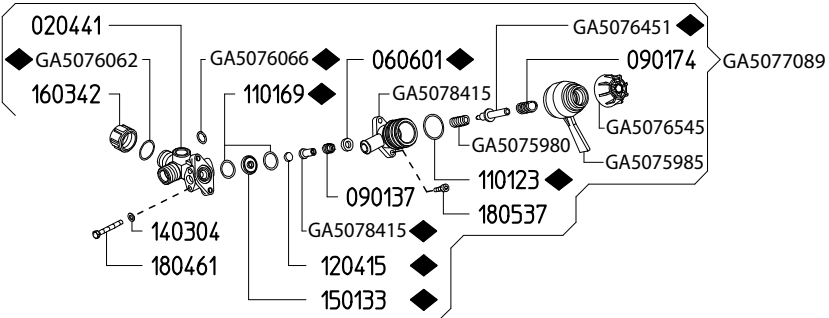
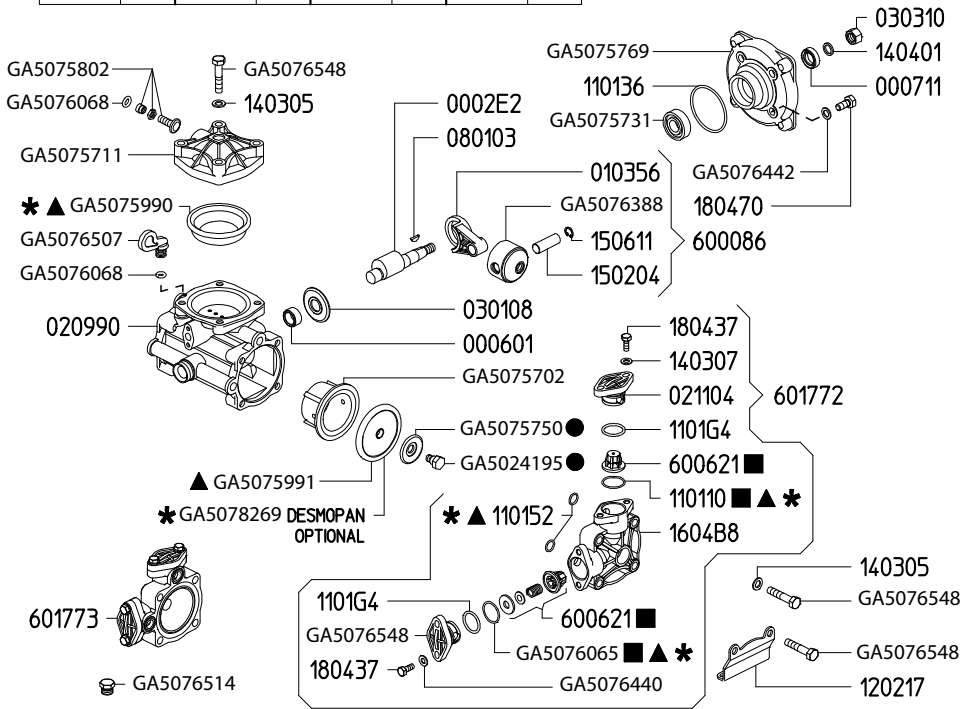
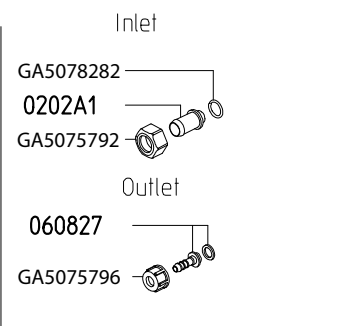
Tank Assembly

Pos.	Part No.	Description	Qty.
2	GA5076714	Filter, Basket type, Diameter 305 x 245 mm deep, Suit main spray tank	1
3	GA5077708	Hose barb, Elbow, 90 degree, 1/2" male thread x 1/2" hose	5
4	GA5078156	Tank flange, 1/2" female threads	2
5	GA5077702	Hose barb, Straight, 1/2" male thread x 1/2" hose	3
6	GA5000469	Hose clamp, 1/2", SS	3
7	GA2000211	Hose, Pressure, 12mm, Black, 250psi	1
8	GA2000209	Hose, Clear, 12mm, Sight tube	1
9	GA5007231	Hose clamp, Cobra type, 1/2"	2
10	GA5004693	Set Screw M8 x 16 GR8.8 ZP	3
11	GA5003643	Washer 8mm Flat SS HD	3
12	GA4501455	Plate, Filter Mount, 300L Compact	1
13	GA5077911	Nipple, Short, 1/2" male thread x 1/2" male thread	1
14	GA5018307	Valve, Ball, 12mm, 1/2" female, Butterfly handle, Brass	1
15	GA2000106*	Suction Filter, 1-1/2" 50 Mesh, 1-1/2" BSP Male Threads	1
16	GA5076604	Fly nut, 1 1/2", Arag	2
17	GA5077679	O ring, 30 x 3 mm	2
18	GA5076258	Hose barb, Elbow, 90 degree, 1 1/2 fly nut end x 25 mm hose	1
19	GA5078019	Bush, Reducing, Poly, 1 1/2 Male Thread x 1 1/4 Female Thread	1
20	GA5076712	Coupling 1 1/4" Male for fly nut 1 1/2"	1

* Sub-assembly shown on following pages.

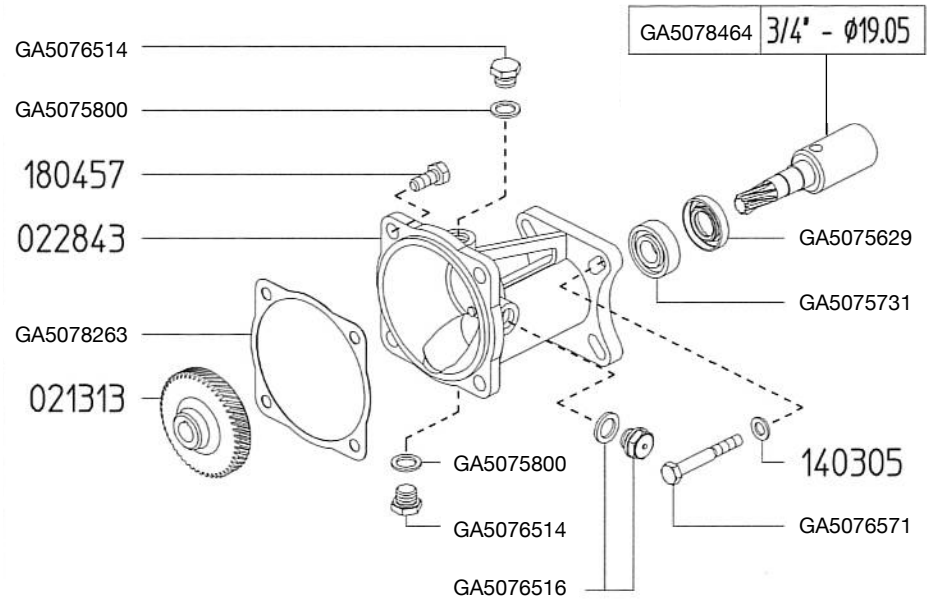
Pump - IOTA 20

KIT 629		KIT 536		KIT 537		KIT 539	
870001		606237		606238		606240	
✱		▲		■		●	
CODICE CODE	Q.TA' Q.TY	CODICE CODE	Q.TA' Q.TY	CODICE CODE	Q.TA' Q.TY	CODICE CODE	Q.TA' Q.TY
GA5075990	1	GA5075990	1	GA5076065	4	GA5024195	2
GA5078269	2	GA5075991	2	600621	4	GA5075750	2
GA5076065	4	GA5076065	4				
110152	4	110152	4				



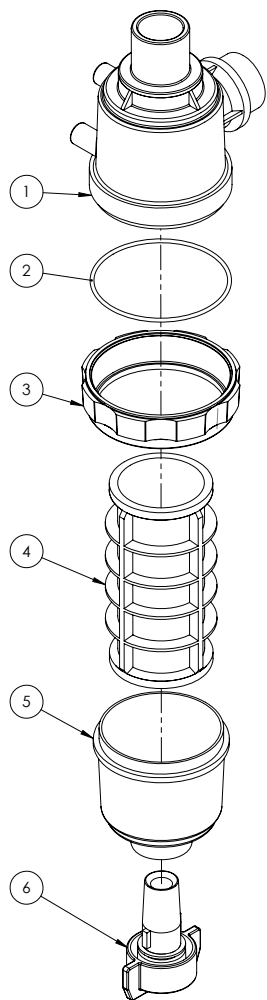
KIT 499	
870101	
◆	
CODICE CODE	Q.TA' Q.TY
020308	1
060601	1
110106	1
110111	1
110123	1
110169	2
120415	1
150133	1
150312	1

Gearbox



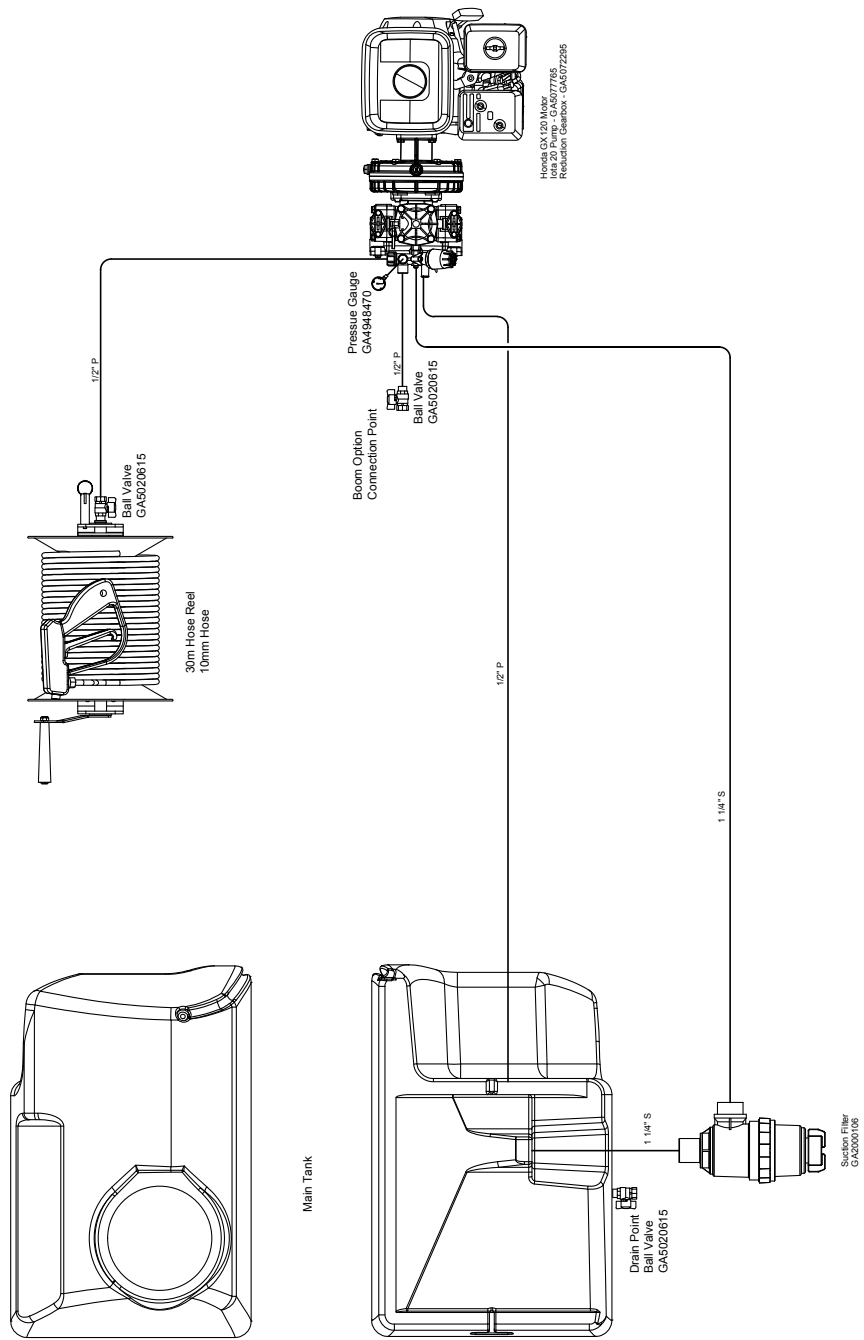
Part No.	Description	Qty.
GA5072715	UDOR engine / pump reduction box 5:1, to suit a GX120 Honda engine with a 3/4" shaft	-
GA5076514	Plug	2
GA5075800	Seal, Rubber, 13 ID x 19 OD x 1.5 mm, Suit diaphragm pump oil plug	2
GA5078263	Gasket, Iota 20	1
GA5078464	Gear shaft, Motor to gear box, Iota 20, 3/4"	1
GA5075629	Oil Seal D17 x 35 x 7 mm	1
GA5075731	Ball Bearing D15 x 35 x 11 mm	1
GA5076571	Hex Screw 5/16 x 1" UNF	4
GA5076516	Oil Plug + Gasket	1

Suction Filter Assembly



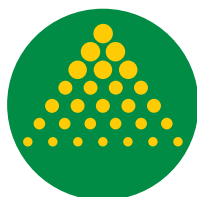
Pos.	Part No.	Description	Qty.
-	GA2000106	Suction Filter, 1 1/2" 50 Mesh, 1 1/2" BSP Male Threads, Geoline	-
1	C00002018	Body, Suction filter, 1 1/2", Geoline, C00002018	1
2	GA5024275	O-ring, 5.34 x 94.62 mm, Suction filter, 1 1/2", suits GA2000106	1
3	GA5024285	Nut, Suction filter, 1 1/2", Geoline	1
4	GA5024295	Filter Screen, 50 Mesh, Dia 79 x 167 mm length, Suit Geoline Filter GA2000106, O-rings GA5024290 are not included.	1
	GA5024290	O-ring, Suit filter mesh	2
5	C00201009	Bowl, Suction filter, 1 1/2", Geoline, C00201009	1
6	K00100001	Drain plug, Suction filter, 1 1/2", Geoline, K00100001	1

Plumbing Schematic



Notes

Notes



GOLDACRES

1-3 Morang Crescent, Mitchell Park Vic 3355

P: 03 5342 6399 F: 03 5342 6308

info@goldacres.com.au

goldacres.com.au